



SSC CHSL 25 Jan 2017 Evening Shift

All rights reserved. No part of this publication may be reproduced, distributed, or transmitted in any form or by any means, electronic, mechanical, photocopying, recording or otherwise, or stored in any retrieval system of any nature without the permission of cracku.in, application for which shall be made to support@cracku.in

Reasoning

Instructions

For the following questions answer them individually

Question 1

Select the related word/letters/number from the given alternatives.

Gambler : Casino :: Clerk : ?

- A Site
- B Restaurant
- C Office
- D Stage

Answer: C

Explanation:

Expression = Gambler : Casino :: Clerk : ?

A gambler plays in a casino, similarly a clerk works in an office.

=> Ans - (C)

25 SSC CHSL Mocks for just Rs. 149

Question 2

Select the related word/letters/number from the given alternatives.

K x L : 11 x 12 :: F x R : ?

- A 13 x 4
- B 10 x 15
- C 18 x 6
- D 6 x 18

Answer: D

Explanation:

Expression = K x L : 11 x 12 :: F x R : ?

The pattern followed is that the numerical values of the alphabets are multiplied.

Eg :- K = 11 , L = 12 \equiv 11 \times 12

Similarly, F = 6 , R = 18 \equiv 6 \times 18

=> Ans - (D)

Question 3

Select the related word/letters/number from the given alternatives.

CD: GH :: ?

- A PQ: TU
- B RS: UV
- C MN: OR

D ST: XY

Answer: A

Explanation:

Expression = CD: GH :: ?

The pattern followed is :

C (+1 letter) = D (+3 letters) = G (+1 letter) = H

Similar pattern is only observed in = P (+1 letter) = Q (+3 letters) = T (+1 letter) = U

Thus, **PQ: TU**

=> Ans - (A)

Question 4

Select the related word/letters/number from the given alternatives.

170 : 13 :: 257 : ?

A 20

B 16

C 22

D 13

Answer: B

Explanation:

Expression = 170 : 13 :: 257 : ?

The pattern followed is = $x^2 + 1 : x$

Eg :- $13^2 + 1 : 13 = 170 : 13$

Similarly, $(16)^2 + 1 = 256 + 1 = 257$

Thus, 257 : **16**

=> Ans - (B)

SSC CHSL Free Mock Test

Question 5

Select the odd word/letters/number/number pair from the given alternatives.

A Professor - College

B Teacher - School

C Beautician - Parlour

D Engineer - Home

Answer: D

Explanation:

A professor works in college, teacher at school and a beautician in a parlour, hence engineer-home is the odd one out.

=> Ans - (D)

Question 6

Select the odd word/letters/number/number pair from the given alternatives.

- A BJRZ
- B MUCK
- C GOWE
- D SAIR

Answer: D

Explanation:

(A) : B (+8 letters) = J (+8 letters) = R (+8 letters) = Z

(B) : M (+8 letters) = U (+8 letters) = C (+8 letters) = K

(C) : G (+8 letters) = O (+8 letters) = W (+8 letters) = E

(D) : S (+8 letters) = A (+8 letters) = I (+9 letters) = R

=> Ans - (D)

Question 7

Select the odd word/letters/number/number pair from the given alternatives.

- A 168
- B 198
- C 196
- D 191

Answer: D

Explanation:

Among the given numbers only 191 is prime and odd, hence it is the odd one out.

=> Ans - (D)

SSC CHSL Previous Papers (DOWNLOAD PDF)

Question 8

Select the odd word/letters/number/number pair from the given alternatives.

- A 51
- B 76
- C 96
- D 92

Answer: A

Explanation:

Among the given numbers, only 51 is odd, hence it is the odd one out.

=> Ans - (A)

Question 9

A series is given with one term missing. Choose the correct alternative from the given ones that will complete the series.
CLNW, EJPU, GHRS, IFTQ, ?

- A KOVD
- B KODV
- C KVDO
- D KDVO

Answer: D

Explanation:

Expression : CLNW, EJPU, GHRS, IFTQ, ?

The pattern followed in each letter of the terms is :

1st letter : C (+2 letters) = E (+2 letters) = G (+2 letters) = I (+2 letters) = K

2nd letter : L (-2 letters) = J (-2 letters) = H (-2 letters) = F (-2 letters) = D

3rd letter : N (+2 letters) = P (+2 letters) = R (+2 letters) = T (+2 letters) = V

4th letter : W (-2 letters) = U (-2 letters) = S (-2 letters) = Q (-2 letters) = O

Thus, missing term = **KDVO**

=> Ans - (D)

Question 10

A series is given with one term missing. Choose the correct alternative from the given ones that will complete the series. DG, JM, PS, VY, ?

- A BD
- B BE
- C CE
- D CD

Answer: B

Explanation:

Expression : DG, JM, PS, VY, ?

The pattern followed in each letter of the terms is :

1st letter : D (+6 letters) = J (+6 letters) = P (+6 letters) = V (+6 letters) = B

2nd letter : G (+6 letters) = M (+6 letters) = S (+6 letters) = Y (+6 letters) = E

Thus, missing term = **BE**

=> Ans - (B)

SSC CGL Previous Papers (DOWNLOAD PDF)

Question 11

A series is given with one term missing. Choose the correct alternative from the given ones that will complete the series. 13, 24, 46, 79, ?

- A 123
- B 120
- C 133

D 151

Answer: A

Explanation:

Multiples of 11 are added.

$$13 + 11 = 24$$

$$24 + 22 = 46$$

$$46 + 33 = 79$$

$$79 + 44 = 123$$

=> Ans - (A)

Question 12

In the following question, two statements are given each followed by two conclusions I and II. You have to consider the statements to be true even if they seem to be at variance from commonly known facts. You have to decide which of the given conclusions, if any, follows from the given statements.

Statement:

(I) Flowers give everything to the world before shedding off from the plant.

(II) Human beings should inherit these good qualities from flowers.

Conclusions:

(I) Imparting education and good learnings to the world is a noble deed.

(II) Flowers teach us to live a meaningful and significant life.

A Only conclusion II follows

B Conclusion I and II both follow

C Neither I nor II follow

D Only conclusion I follows

Answer: B

Explanation:

Flowers give everything to the world before shedding off from the plant which teach us to live a meaningful and significant life. Hence Conclusion II follows the given statements.

Human beings should inherit these good qualities from flowers which shows that learning good qualities is a noble deed. Hence Conclusion I follows the given statements.

∴ Both Conclusion I and II follow the given statements

Hence, the correct answer is Option B

Question 13

A series is given with one term missing. Choose the correct alternative from the given ones that will complete the series.

Spring, Summer, Monsoon, ?

A PreWinter

B Rainy

C Autumn

D Winter

Answer: D

Explanation:

Order of weathers is given.

= Spring -> Summer -> Monsoon -> Winter

=> Ans - (D)

SSC CGL Free Mock Test (Latest Pattern)

Question 14

Usha, Tulsi, Divya, Pooja, Rohit, Aakash and Aditi are facing north. Rohit is at the immediate left of Aakash, while Divya is the neighbour of Tulsi and Pooja. The one who is third to the left of Pooja is on one of the ends. Aditi is fourth to the left of Rohit. Who are the neighbours of Tulsi?

- A Aditi and Divya
- B Aakash and Pooja
- C Divya and Pooja
- D Aakash only

Answer: A

Explanation:

The one who is third to the left of Pooja is on one of the ends.

=> Pooja is sitting in the middle.

Rohit is at the immediate left of Aakash. Aditi is fourth to the left of Rohit.

=> Aditi _ _ _ Rohit Aakash

Also, Divya is the neighbour of Tulsi and Pooja.

=> Divya sits to the immediate left of Pooja.

Thus, arrangement :

Aditi	Tulsi	Divya	Pooja	Rohit	Aakash	Usha
-------	-------	-------	-------	-------	--------	------

∴ **Aditi and Divya** are the neighbours of Tulsi.

=> Ans - (A)

Question 15

Arrange the given words in the sequence in which they occur in the dictionary.

- i. Carrier
- ii. Capability
- iii. Cause
- iv. Course

- A ii, i, iii, iv
- B i, ii, iii, iv
- C ii, iii, i, iv
- D ii, iv, i, iii

Answer: A

Explanation:

As per the order of dictionary :

= Capability -> Carrier -> Cause -> Course

≡ ii, i, iii, iv

=> Ans - (A)

Question 16

In a certain code language "POUCH" is written as "53461", and "PRAYERS" is written as "578902 ↑". How will "CHEES" be written in that code language?

- A 6102 ↑
- B 6100 ↑
- C 610 ↑ 0
- D 6001 ↑

Answer: B

Explanation:

The codes for each letter is given :

- C -> 6
- H -> 1
- E -> 0
- E -> 0
- S -> ↑

Thus, CHESS : 6100 ↑

=> Ans - (B)

SSC CHSL Important Questions and Answers (Download PDF)

Question 17

Find the missing number in Given Series ?

9	4	1
36	25	1
144	81	?

- A 3
- B 2
- C 63
- D 68

Answer: A

Explanation:

In each row, for the numbers a , b and c , pattern is : $c = \sqrt{a} - \sqrt{b}$

Eg :- $\sqrt{9} - \sqrt{4} = 3 - 2 = 1$

$\sqrt{36} - \sqrt{25} = 6 - 5 = 1$

Similarly, $\sqrt{144} - \sqrt{81} = 12 - 9 = 3$

=> Ans - (A)

Question 18

If K denotes \times , T denotes \div , V denotes $+$ and R denotes $-$, then $16 V 24 T 8 R 6 T 2 K 3 = ?$

- A 10
- B 9
- C 12
- D 11

Answer: A

Explanation:

Expression : $16 \vee 24 \text{ T } 8 \text{ R } 6 \text{ T } 2 \text{ K } 3 = ?$

$$\equiv 16 + 24 \div 8 - 6 \div 2 \times 3$$

$$= 16 + \left(\frac{24}{8}\right) - (3 \times 3)$$

$$= 16 + 3 - 9 = 10$$

=> Ans - (A)

Question 19

In the following question, which one set of letters when sequentially placed at the gaps in the given letter series shall complete it?
x_za_yza_xy_aa_

- A yxaza
- B yxaxa
- C xyazz
- D yxazz

Answer: A

Explanation:

The pattern followed is that the term 'xyz' is repeated and a's in increasing order are appended at the end.

= xyza xyzaa xyzaaa

=> Ans - (A)

SSC CHSL Study Material

Question 20

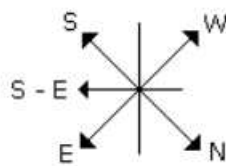
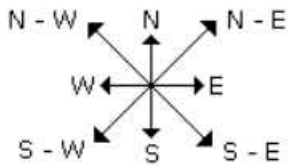
If north becomes southwest, northeast becomes west and so on, then east will become which direction?

- A North-west
- B South-east
- C South
- D North

Answer: A

Explanation:

If north-west becomes south, north-east becomes west and so on, then :



It is clear from the diagrams that new name of East will become North-west.

=> Ans - (A)

Question 21

A word is represented by only one set of numbers as given in any one of the alternatives. The sets of numbers given in the alternatives are represented by two classes of alphabets as shown in the given two matrices. The columns and rows of Matrix-I are numbered from 0 to 4 and that of Matrix-II are numbered from 5 to 9. A letter from these matrices can be represented first by its row and next by its column, for example, 'D' can be represented by 20, 44 etc., and can be represented by 57,76 etc. Similarly, you have to identify the set for the word 'MOUSE'.

MATRIX 1:

	0	1	2	3	4
0	D	E	R	U	M
1	M	R	E	D	U
2	D	M	U	R	E
3	U	D	M	E	R
4	E	U	R	M	D

MATRIX 2:

	5	6	7	8	9
5	S	N	T	N	O
6	T	S	A	O	N
7	O	T	N	S	A
8	A	O	S	N	T
9	N	A	O	T	S

- A 21, 59, 03, 99, 40
- B 32, 68, 13, 66, 01
- C 04, 75, 41, 86, 12
- D 43, 86, 30, 55, 32

Answer: A

Explanation:

- (A) : 21, 59, 03, 99, 40 = **MOUSE**
- (B) : 32, 68, 13, 66, 01 = MODSE
- (C) : 04, 75, 41, 86, 12 = MOUOE
- (D) : 43, 86, 30, 55, 32 = MOUSM

=> Ans - (A)

Question 22

Pointing towards a lady in a photograph, Ram says, "Her mother is the mother-in-law of my father's brother". How is the lady related to Ram?

- A Mother
- B Sister
- C Aunt

D Mother-in-law

Answer: C

Explanation:

Ram's father's brother = Ram's uncle

Mother-in-law of Ram's uncle = Ram's uncle wife's mother

Thus, the lady is the wife of Ram's uncle

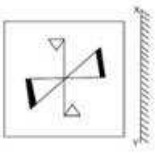
=> That lady is Ram's aunt.

=> Ans - (C)

SSC CHSL Free App

Question 23

If a mirror is placed on the line XY, then which of the answer figures is the right image of the given figure?



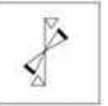
A



B



C



D



Answer: B

Explanation:

If a mirror is placed on the line XY,

The facing of the figure to the left and right direction changes to opposite direction in mirror image (right facing changes to left and vice versa)

∴ The mirror image of the given figure is



Hence, the correct answer is Option B

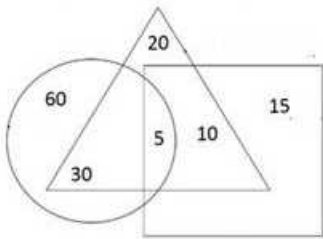
Question 24

Study the following information carefully and answer the question based on it.

Square : The person who reads English newspaper.

Triangle : The person who reads Marathi newspaper.

Circle : The person who reads Hindi newspaper.

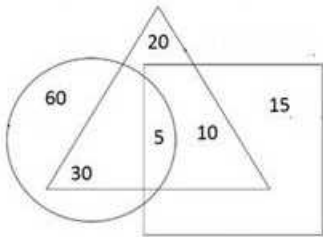


How many people read only Marathi newspaper?

- A 30
- B 20
- C 60
- D 10

Answer: B

Explanation:



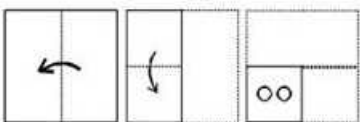
From the figure,

Number of people who read only Marathi newspaper = People who are in Triangle but not in Square and Circle = 20

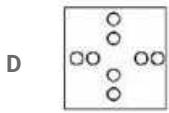
Hence, the correct answer is Option B

Question 25

A piece of paper is folded and punched as shown below in the question figures. From the given answer figures, indicate how it will appear when opened.



- A
- B
- C



Answer: A

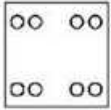
Explanation:

When the paper is opened, the pattern of cutting will be similar on the four parts of the paper.

When the paper is unfolded first to the top, two circles will appear similarly on the top part.

When the paper is unfolded again to the right, two circles each will appear similarly on top right and bottom right part of the paper.

∴ When the paper is opened it will appear as shown below



Hence, the correct answer is Option A

Daily Free SSC Practice Set

General Awareness

Instructions

For the following questions answer them individually

Question 26

In 2007, which monument was declared a winner of the New 7 Wonders of the World?

- A Taj Mahal
- B Hawa Mahal
- C Agra Fort
- D Lotus Temple

Answer: A

Free SSC Study Material (18,000 Solved Questions)

Question 27

Deepa Mehta was nominated for Oscars for the movie "Water" in the category of

- A Best Sound Mixing
- B Best Original Score
- C Best Original Song
- D Best Foreign Language Film

Answer: D

Question 28

Myopia affects which of the following organs?

- A Heart

- B Skin
- C Eyes
- D Mouth

Answer: C

Question 29

Which of the following bears flowers?

- A Bryophyta
- B Pteridophyta
- C Gymnosperms
- D Angiosperms

Answer: D

1500+ Very Important Free SSC Solved Questions

Question 30

Oxygenated blood flows out of the heart through the

- A aorta
- B pulmonary artery
- C vena cava
- D atrium

Answer: A

Question 31

Covalent Bond is also called

- A Molecular Bond
- B Proton Bond
- C Nucleus Bond
- D Electron Bond

Answer: A

Question 32

Sulphur and Chlorine can have what type of a bond?

- A Polar covalent
- B Polyionic
- C Nonpolar covalent

D Ionic

Answer: A

SSC Exam Update Videos & Free Study Material (YouTube Channel)

Question 33

Which of these is not a database management system (DBMS)?

A Sybase

B SAP HANA

C MySQL

D Cosmos

Answer: D

Question 34

Losar festival is celebrated in which state?

A Assam

B Orissa

C Nagaland

D Sikkim

Answer: D

Question 35

If for the year a country's GDP was \$ 1315 million, consumer spending was \$900 million, investment by businesses was \$180 million, exports were \$85 million and imports were \$100 million, calculate government spending?

A \$220 million

B \$250 million

C \$580 million

D \$610 million

Answer: B

Latest Job Updates on Telegram - Join here

Question 36

Stagflation exists when

A price indices and output both decrease.

B price indices increase but output decreases.

C price indices and output both increase.

D price indices decrease but output increases.

Answer: B

Question 37

Kanha Tiger Reserve is in which state?

A Maharashtra

B Andhra Pradesh

C Chhattisgarh

D Madhya Pradesh

Answer: D

Question 38

Which of the following is a greenhouse gas or a gas which can deplete the ozone layer?

A Ar

B HN_3

C CO_2

D C_4H_6

Answer: C

Join SSC Daily Quiz Telegram Group

Question 39

ABM stands for

A Anti Belligerent Mine

B Anti Base Machine

C Anti Body Mechanics

D Anti Ballistic Missile

Answer: A

Question 40

In terms of size, Venus ranks no. in our Solar System.

A 5

B 6

C 7

D 8

Answer: B

Question 41

Who was the first to measure the circumference of earth?

- A Erechtheus
- B Aegeus
- C Eratosthenes
- D Apheidas

Answer: C

25 SSC CHSL Mocks for just Rs. 149

Question 42

When did the first Huna invasion take place?

- A 358 AD
- B 458 AD
- C 558 AD
- D 658 AD

Answer: B

Question 43

Chandragupta (322-298 BC) was the ruler of which dynasty?

- A Maurya
- B Mewar
- C Mughal
- D Peshwas

Answer: A

Question 44

Who Invented Electric Stove?

- A Lloyd Groff Copeman
- B Bartolomeo Cristofori
- C Leonardo da Vinci
- D Philip Diehl

Answer: A

SSC CHSL Free Mock Test

Question 45

Instrument used for measuring specific gravity is called

- A Bathymeter
- B Cryometer
- C Areometer
- D Cymometer

Answer: C

Question 46

Cryogenics is a branch of Physics that deal with

- A very high temperatures
- B very low temperatures
- C growth of extremely small crystals
- D growth of extremely large crystals

Answer: B

Question 47

Indian Constitution has how many Articles?

- A 95
- B 195
- C 295
- D 395

Answer: D

SSC CHSL Previous Papers (DOWNLOAD PDF)

Question 48

Article 31A of the Indian Constitution "Saving of Laws providing for acquisition of estates, etc" deals with?

- A the State Government
- B the Union Government
- C the fundamental rights of the Indian Citizen
- D the directive principles of state policy

Answer: C

Question 49

What is the full name of Sachin Tendulkar?

- A Sachin Suresh Tendulkar
- B Sachin Mahesh Tendulkar
- C Sachin Ramesh Tendulkar
- D Sachin Lokesh Tendulkar

Answer: C

Question 50

Who is the author of "The Lowland"?

- A Amitav Ghosh
- B kiran Desai
- C Jhumpa Lahiri
- D Aravind Adiga

Answer: C

SSC CGL Previous Papers (DOWNLOAD PDF)

English

Instructions

For the following questions answer them individually

Question 51

In the following question, out of the four alternatives, select the alternative which is the best substitute of the phrase. disgusting and an unpleasant smell.

- A oops
- B ouch
- C darn
- D rancid

Answer: D

SSC CGL Free Mock Test (Latest Pattern)

Question 52

In the following question, some part of the sentence may have errors. Find out which part of the sentence has an error and select the appropriate option. If a sentence is free from error, select 'No Error'.

Maya was not promoted to(A)/the post of a manager(B)/till for a few months of her resignation.(C)/No error(D)

- A A
- B B
- C C

D D

Answer: C

Question 53

In the following question, out of the four alternatives, select the alternative which best expresses the meaning of the idiom/phrase.
No man is an island

- A a man is self sufficient only when he gets married
- B no one is selfsufficient; everyone relies on others
- C nobody prefers to live alone
- D to not marry is like living on an island

Answer: B

Question 54

In the following question, the sentence given with blank to be filled in with an appropriate word. Select the correct alternative out of the four and indicate it by selecting the appropriate option.

This letter is toyou with the problems faced by the society members.

- A acquaint
- B illustrate
- C convince
- D demonstrate

Answer: A

SSC CHSL Important Questions and Answers (Download PDF)

Question 55

Select the antonym of brawl

- A truce
- B fracas
- C altercation
- D bicker

Answer: A

Question 56

Select the word with the correct spelling.

- A thankfue
- B chancer
- C nibbling
- D pollyglot

Answer: C

Question 57

In the following question, out of the four alternatives, select the alternative which is the best substitute of the phrase. a person who can endure pain or hardship without showing their feelings or complaining.

- A agitate
- B fluster
- C stoic
- D upset

Answer: C

SSC CHSL Study Material

Question 58

Select the synonym of antagonize

- A alienate
- B placid
- C sync
- D serene

Answer: A

Question 59

In the following question, a sentence has been given in Direct/Indirect speech. Out of the four alternatives suggested, select the one, which best express the same sentence in Indirect/Direct speech.

The professor said to Suraj, "Who were you waiting for?"

- A The professor asked Suraj who he was waiting for.
- B The professor asked Suraj who he had been waiting for.
- C The professor inquired with Suraj who he was waiting for.
- D The professor asked Suraj who he has been waiting for.

Answer: B

Question 60

Select the antonym of offensive

- A obnoxious
- B agreeable
- C repugnant

D odious

Answer: B

SSC CHSL Free App

Question 61

Select the synonym of:
incisive

A daffy

B concise

C stolid

D tedious

Answer: B

Question 62

Rearrange the parts of the sentence in correct order.

I am raising these questions

Pare early warning signs

Qof a deeper crisis

Rbecause such events

A RQP

B PQR

C RPQ

D QRP

Answer: C

Question 63

In the following question, out of the four alternatives, select the alternative which best expresses the meaning of the idiom/phrase.

The squeaky wheel gets the grease

A the most noticeable problems are the ones most likely to get attention

B one unfortunate child always keep getting punished

C the person who complains the most is hated the most

D the favourite child or student gets the most attention

Answer: A

Daily Free SSC Practice Set

Question 64

In the following question, some part of the sentence may have errors. Find out which part of the sentence has an error and select the appropriate option. If a sentence is free from error, select 'No Error'.

One who perpetually hesitates(A)/which of the two things he will do first(B)/will ultimately do neither.(C)No error(D)

A A

B B

C C

D D

Answer: D

Question 65

Improve the bracketed part of the sentence. The other shirt (will cost) you more.

A would cost

B will be costing

C could be costing

D no improvement

Answer: D

Question 66

Rearrange the parts of the sentence in correct order.

Even the knowledge

Pfor less disastrous policies

Qthe Census would make

Rof elementary facts from

A QRP

B QPR

C PRQ

D RQP

Answer: D

Free SSC Study Material (18,000 Solved Questions)

Question 67

Select the word with the correct spelling.

A mongose

B salvaged

C belives

D although

Answer: D

Question 68

In the following question, a sentence has been given in Active/Passive voice. Out of four alternatives suggested, select the one, which best expresses the same sentence in Passive/Active voice.

I will wash the car every Sunday.

- A The car would be washed by me every Sunday.
- B The car will be washed by me every Sunday.
- C Every Sunday the car would be washed by me.
- D The car will have been washed by me every Sunday.

Answer: B

Question 69

In the following question, the sentence given with blank to be filled in with an appropriate word. Select the correct alternative out of the four and indicate it by selecting the appropriate option.

If you exercisefor half an hour daily, then you will rid yourself from the problem of hypertension.

- A recurrently
- B regularly
- C routinely
- D continuously

Answer: B

1500+ Very Important Free SSC Solved Questions

Question 70

Improve the bracketed part of the sentence.

Having finished the voluminous novel, (it was being put away by him).

- A it was put away by him
- B he has had put it away
- C he put it away
- D no improvement

Answer: C

Explanation:

Start Group:

Instructions

In the following passage, some of the words have been left out. Read the passage carefully and select the correct answer for the given blank out of the four alternatives.

The chasm(1).....the needs of the people who struggle(2)..... survival, action and inaction by representatives, and lack of remedial justice has compromised representative democracy(3)..... Defections from one party to another indicate.....(4).....of the basic obligations of representatives, even(5).....their own people starve.

Question 71

The chasmthe needs of the people

- A between
- B of
- C about
- D in

Answer: A

Question 72

Who strugglesurvival, action

- A for
- B with
- C from
- D of

Answer: A

SSC Exam Update Videos & Free Study Material (YouTube Channel)

Question 73

Lack of remedial justice has compromised representative democracy

- A really
- B superlatively
- C enormously
- D too much

Answer: C

Question 74

Defections from one party to another indicateof the basic obligations of representatives

- A renouncing
- B renunciation
- C renunciate
- D the renunciation

Answer: B

Question 75

Eventheir own people starve.

- A like
- B so
- C whereas
- D as

Answer: D

Latest Job Updates on Telegram - Join here

Mathematics

Instructions

For the following questions answer them individually

Question 76

If $5(4 - x) - 4 < 3x - 2 > 4x - 6$; then the value of x is

- A 3
- B 1
- C 2
- D 5

Answer: A

Explanation:

Given, $5(4 - x) - 4 < 3x - 2 > 4x - 6$

$$\Rightarrow 20 - 5x - 4 < 3x - 2 > 4x - 6$$

$$\Rightarrow 16 - 5x < 3x - 2 > 4x - 6$$

$$\Rightarrow 16 - 5x < 3x - 2 \text{ and } 3x - 2 > 4x - 6$$

$$\Rightarrow 8x > 18 \text{ and } x < 4$$

$$\Rightarrow x > \frac{9}{4} \text{ and } x < 4$$

$$\Rightarrow x > 2.25 \text{ and } x < 4$$

$$\Rightarrow 2.25 < x < 4$$

$$\therefore x = 3$$

Join SSC Daily Quiz Telegram Group

Question 77

Mother can bake 20 cakes in 4 hours, Mother and Dadima together can bake 60 cakes in 10 hours. How many cakes Dadima can bake in 30 hours?

- A 30
- B 75
- C 60

D 25

Answer: A

Explanation:

Cakes baked by Mother in 1 hour = $\frac{20}{4} = 5$

Cakes baked by Mother and Dadima together in 1 hour = $\frac{60}{10} = 6$

\Rightarrow Cakes baked by Dadima in 1 hour = $6 - 5 = 1$

\therefore Cakes baked by Dadima in 30 hours = $30 \times 1 = 30$

Question 78

What is the value of 99992×100008 ?

A 9999999936

B 9999899936

C 9999999836

D 9999999926

Answer: A

Explanation:

Expression : 99992×100008

$= (100000 - 8) \times (100000 + 8)$

$= (100000)^2 - (8)^2$

$= 10000000000 - 64 = 9999999936$

\Rightarrow Ans - (A)

Question 79

Of the 3 numbers whose average is 70, the first is $\frac{1}{9}$ times the sum of other 2. The first number is

A 32

B 21

C 14

D 42

Answer: B

Explanation:

Let the three numbers be x, y, z

Sum of three numbers = $x + y + z = 70 \times 3 = 210$

According to ques, $\Rightarrow x = \frac{1}{9} \times (y + z)$

$\Rightarrow x = \frac{1}{9} \times (210 - x)$

$\Rightarrow 9x = 210 - x$

$\Rightarrow 9x + x = 10x = 210$

$\Rightarrow x = \frac{210}{10} = 21$

25 SSC CHSL Mocks for just Rs. 149

Question 80

Point P is the midpoint of seg AB. Coordinates of P are (1,1) and A are (4,3). What are the coordinates of point B?

- A (2, 1)
- B (-2, -1)
- C (2, -1)
- D (-2, 1)

Answer: B

Explanation:

Coordinates of mid point of line joining A (x_1, y_1) and B $(x_2, y_2) = \left(\frac{x_1+x_2}{2}, \frac{y_1+y_2}{2} \right)$

Let coordinates of B (x, y)

A = (4,3) and P = (1,1)

$$\Rightarrow 1 = \frac{4+x}{2}$$

$$\Rightarrow x = 2 - 4 = -2$$

Similarly, $1 = \frac{3+y}{2}$

$$\Rightarrow y = 2 - 3 = -1$$

Thus, coordinates of B (-2,-1)

Question 81

If the amount received at the end of 2nd and 3rd year at Compound Interest on a certain Principal is Rs 33708, and Rs 35730.48 respectively, what is the rate of interest?

- A 6 percent
- B 3 percent
- C 12 percent
- D 10 percent

Answer: A

Explanation:

Compound interest at the end of 2nd year = Rs. 33,708

Compound interest at the end of 3rd year = Rs. 35,730.48

$$\Rightarrow \text{Difference} = 35730.48 - 33708 = \text{Rs. } 2022.48$$

This is the interest obtained on the amount of 2nd year.

$$\therefore \text{Rate of interest, } r = \frac{2022.48}{33708} \times 100 = 6\%$$

\Rightarrow Ans - (A)

Question 82

Slope of the side DA of the rectangle ABCD is $\frac{1}{3}$. What is the slope of the side AB?

- A 3

- B $1/3$
- C $-1/3$
- D -3

Answer: D

Explanation:

Sides DA and AB are perpendicular to each other and product of slopes of two perpendicular lines = -1

Let slope of side AB = m and slope of side DA = $\frac{1}{3}$

$$\Rightarrow m \times \frac{1}{3} = -1$$

$$\Rightarrow m = -3$$

\Rightarrow Ans - (D)

SSC CHSL Free Mock Test

Question 83

If the radius of a circle is increased by 29% its area increases by

- A 58 percent
- B 29 percent
- C 33.205 percent
- D 66.41 percent

Answer: D

Explanation:

Let radius = 10 cm

$$\Rightarrow \text{Area of circle} = \pi(10)^2 = 100\pi \text{ sq. cm}$$

If radius is increased by 29%, \Rightarrow New radius = 12.9 cm

$$\text{New area} = \pi(12.9)^2 = 166.41\pi \text{ sq. cm}$$

$$\Rightarrow \% \text{ increase in area} = \frac{166.41 - 100}{100} \times 100$$

$$= 66.41 \%$$

Question 84

A shopkeeper by selling 23 Lotto shoes, earns a profit equal to the selling price of 7 Lotto shoes. His profit percentage is

- A 43.75 percent
- B 30.4 percent
- C 60.8 percent
- D 17.05 percent

Answer: A

Explanation:

Let Cost price of 1 shoe = Rs. x

Let Selling price of 1 shoe = Rs. y

Profit of 23 shoes = Rs. $23(y - x)$

According to ques, $\Rightarrow 23(y - x) = 7y$

$$\Rightarrow 23y - 23x = 7y$$

$$\Rightarrow 23x = 23y - 7y = 16y$$

$$\Rightarrow \frac{y}{x} = \frac{23}{16}$$

$$\therefore \text{Profit \%} = \frac{y-x}{x} \times 100$$

$$= \frac{7}{16} \times 100 = 43.75\%$$

Question 85

If $3x + 7 = 5x + 1$, then the numerical value of $(x + 4)^2$ is

- A -1
- B 49
- C -49
- D 1

Answer: B

Explanation:

Expression : $3x + 7 = 5x + 1$

$$\Rightarrow 5x - 3x = 7 - 1 = 6$$

$$\Rightarrow x = \frac{6}{2} = 3$$

To find : $(x + 4)^2$

$$= (3 + 4)^2 = (7)^2 = 49$$

SSC CHSL Previous Papers (DOWNLOAD PDF)

Question 86

If Giri's salary is $\frac{9}{5}$ times of Hariprasad's and Shaukat's is $\frac{9}{2}$ times of Hariprasad's, what is the ratio of Giri's salary to Shaukat's?

- A 10:81
- B 81:10
- C 5:2
- D 2:5

Answer: D

Explanation:

Let Hariprasad's salary = $10x$

$$\Rightarrow \text{Giri's salary} = \frac{9}{5} \times 10x = 18x$$

$$\Rightarrow \text{Shaukat's salary} = \frac{9}{2} \times 10x = 45x$$

$$\therefore \text{Ratio of Giri's salary to Shaukat's} = \frac{18x}{45x}$$

$$= 2 : 5$$

Question 87

If $\sin 330^\circ = x$, then the value of x is

- A $-\sqrt{3}/2$
- B $-1/2$
- C $2/\sqrt{3}$
- D $\sqrt{2}$

Answer: B

Explanation:

Expression : $\sin 330^\circ = x$

$$= \sin(360 - 30)$$

$$= -\sin 30 = -\frac{1}{2}$$

=> Ans - (B)

Question 88

If $x - y = 7$ and $x + y = 13$, then $x^2 - y^2$ is

- A 104
- B 30
- C 30
- D 91

Answer: D

Explanation:

Equation 1 : $x - y = 7$

Equation 2 : $x + y = 13$

Adding both equations, we get : $2x = 7 + 13 = 20$

$$\Rightarrow x = \frac{20}{2} = 10$$

Substituting value of 'x' in equation 1, $\Rightarrow y = 10 - 7 = 3$

To find : $x^2 - y^2 = (10^2 - 3^2)$

$$= 100 - 9 = 91$$

SSC CGL Previous Papers (DOWNLOAD PDF)

Question 89

A car travels a certain distance at 34 km/h and comes back at 66 km/h. What is the average speed for total journey?

- A 50 km/hr
- B 39.76 km/hr
- C 55.12 km/hr
- D 44.88 km/hr

Answer: D

Explanation:

Average speed of the journey is the harmonic mean of the speeds 34 and 66 km/hr

Harmonic mean of two numbers 'x' and 'y' = $\frac{2}{\frac{1}{x} + \frac{1}{y}}$

$$\begin{aligned} \text{Average speed} &= \frac{2}{\frac{1}{34} + \frac{1}{66}} \\ &= 2 \div \frac{66+34}{66 \times 34} = \frac{2 \times 66 \times 34}{100} \\ &= \frac{4488}{100} = 44.88 \text{ km/hr} \end{aligned}$$

=> Ans - (D)

Question 90

30% discount is offered on an item. By applying a promo code the customer wins 10% cash back. What is the effective discount?

- A 40.7 percent
- B 40 percent
- C 37 percent
- D 13 percent

Answer: C

Explanation:

Let the marked price of item = Rs. $100x$

$$\begin{aligned} \text{Amount after 30 \% discount} &= 100x - \frac{30}{100} \times 100x \\ &= 100x - 30x = \text{Rs. } 70x \end{aligned}$$

$$\begin{aligned} \text{Selling price after 10 \% cashback} &= 70x - \frac{10}{100} \times 70x \\ &= 70x - 7x = \text{Rs. } 63x \end{aligned}$$

$$\Rightarrow \text{Total discounted amount} = 100x - 63x = \text{Rs. } 37x$$

$$\therefore \text{Effective discount} = \frac{37x}{100x} \times 100 = 37\%$$

Question 91

A cylindrical vessel of height 7 cm and radius 5 cm is completely filled with sand. When this sand is poured out it forms a right circular cone of radius 8 cm what will be the height of this cone?

- A 8.2 cm
- B 16.4 cm
- C 24.6 cm
- D 32.8 cm

Answer: A

Explanation:

Let height of cone = h cm and radius, $r = 8$ cm

Height of cylinder, $H = 7$ cm and Radius, $R = 5$ cm

Volume of cylinder = Volume of cone

$$\Rightarrow \pi R^2 H = \frac{1}{3} \pi r^2 h$$

$$\Rightarrow (5)^2 \times 7 = \frac{1}{3} \times (8)^2 \times h$$

$$\Rightarrow h = \frac{25 \times 7 \times 3}{64} = \frac{525}{64}$$

$$\Rightarrow h = 8.2 \text{ cm}$$

SSC CGL Free Mock Test (Latest Pattern)

Question 92

What is the value of $\frac{\operatorname{cosec} A}{\sqrt{(\operatorname{cosec}^2 A - 1)}}$?

A $\sin A$

B $\sec A$

C $\tan A$

D $\cos A$

Answer: B

Explanation:

Expression : $\frac{\operatorname{cosec} A}{\sqrt{(\operatorname{cosec}^2 A - 1)}}$

Using, $(\operatorname{cosec}^2 A - \cot^2 A = 1)$

$$= \frac{\operatorname{cosec} A}{\sqrt{\cot^2 A}} = \frac{\operatorname{cosec} A}{\cot A}$$

$$= \frac{1}{\sin A} \div \frac{\cos A}{\sin A}$$

$$= \frac{1}{\sin A} \times \frac{\sin A}{\cos A}$$

$$= \frac{1}{\cos A} = \sec A$$

\Rightarrow Ans - (B)

Question 93

ΔABC is right angled at B. BD is the altitude. AD is 8 cm and DC is 50 cm. What is the length of BD?

A 25 cm

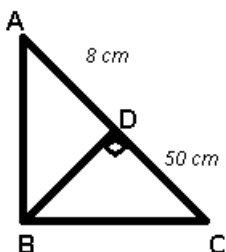
B 20 cm

C 16 cm

D 15 cm

Answer: B

Explanation:



Let $BD = x$ cm

Using, $(BD)^2 = (AD) \times (CD)$

$$\Rightarrow (x)^2 = 8 \times 50 = 400$$

$$\Rightarrow x = \sqrt{400} = 20 \text{ cm}$$

\Rightarrow Ans - (B)

Question 94

If $\sec A - \tan A = x$, then the value of x is

A $\sqrt{[(1 + \sin A)/(1 - \sin A)]}$

B $\sqrt{[(1 - \sin A)/(1 + \sin A)]}$

C $(1 - \sin A)/(1 + \sin A)$

D $(1 + \sin A)/(1 - \sin A)$

Answer: B

Explanation:

Expression : $\sec A - \tan A = x$

$$= \frac{1}{\cos A} - \frac{\sin A}{\cos A}$$

$$= \frac{1 - \sin A}{\cos A} = \frac{\sqrt{(1 - \sin A)^2}}{\sqrt{1 - \sin^2 A}}$$

$$= \sqrt{\frac{(1 - \sin A)^2}{(1 - \sin A)(1 + \sin A)}}$$

$$= \sqrt{\frac{1 - \sin A}{1 + \sin A}}$$

\Rightarrow Ans - (B)

SSC CHSL Important Questions and Answers (Download PDF)

Question 95

In a rectangle

A Diagonals bisect opposite angles

B Consecutive sides are congruent

C All sides are congruent

D Diagonals form two congruent triangles

Answer: D

Explanation:

In a rectangle, diagonals are of equal length and they bisect each other.

Also, both the diagonals will have vertically opposite angles between them which are equal.

Thus, Diagonals form two congruent triangles (by SAS criteria)

\Rightarrow Ans - (D)

Question 96

Two fractions are such that their product is 4 and sum is $68/15$. Find the two fractions.

- A 6/15, 10/3
- B 6/5, 10/3
- C 7/2, 8/7
- D 10/7, 14/5

Answer: B

Explanation:

Let the two numbers be x and y

$$\Rightarrow x + y = \frac{68}{15} \text{ and } x \cdot y = 4$$

$$\Rightarrow x\left(\frac{68}{15} - x\right) = 4$$

$$\Rightarrow x\left(\frac{68-15x}{15}\right) = 4$$

$$\Rightarrow 68x - 15x^2 = 60$$

$$\Rightarrow 15x^2 - 68x + 60 = 0$$

$$\Rightarrow 15x^2 - 50x - 18x + 60 = 0$$

$$\Rightarrow 5x(3x - 10) - 6(3x - 10) = 0$$

$$\Rightarrow (5x - 6)(3x - 10) = 0$$

$$\Rightarrow x = \frac{6}{5}, \frac{10}{3}$$

Question 97

Read the data answer the given questions

	Quantity of cost	Average cost
MOBILES	52	15000
CAMERAS	76	8000
TVs	31	51000
REFRIGERATOR	71	26000
AC	70	20000

What is the total value of the stocks in lakhs rupees?

- A 621.5
- B 120
- C 62.15
- D 300

Answer: C

Explanation:

Total cost of mobiles = $52 \times 15000 = \text{Rs. } 7,80,000$

Total cost of Cameras = $76 \times 8000 = \text{Rs. } 6,08,000$

Total cost of TVs = $31 \times 51000 = \text{Rs. } 15,81,000$

Total cost of Refrigerator = $71 \times 26000 = \text{Rs. } 18,46,000$

Total cost of AC = $70 \times 20000 = \text{Rs. } 14,00,000$

\therefore Total cost = $7,80,000 + 6,08,000 + 15,81,000 + 18,46,000 + 14,00,000 = \text{Rs. } 62,15,000$

Total cost in lakhs = Rs 62.15 lakhs

=> Ans - (C)

SSC CHSL Study Material

Question 98

Read the data and answer the given questions

Years	Ratio import/export
2011	0.8
2012	0.8
2013	1.2
2014	1.2
2015	1.5

If the Imports In 2012 was Rs. 1200 crores and the total exports In the years 2012 and 2013 together was Rs. 3200 crores, then the Imports in 2013 was?

- A 1700
- B 1500
- C 1417
- D 2040

Answer: D

Explanation:

Imports in 2012 = Rs. 1200 crores

Let Exports in 2012 = Rs. y crores

Ratio of imports and exports in 2012 = 0.8

$$\Rightarrow \frac{1200}{y} = 0.8$$

$$\Rightarrow y = \frac{1200}{0.8} = 1500$$

Total exports In the years 2012 and 2013 together = Rs. 3200 crores

\Rightarrow Exports in 2013 = Rs. (3200 - 1500) crores = Rs. 1700 crores

Let imports in 2013 = Rs. x crores

Ratio of imports and exports in 2013 = $\frac{x}{1700} = 1.2$

$$\Rightarrow x = 1700 \times 1.2 = 2040$$

\therefore Imports in 2013 was Rs. 2040 crores

\Rightarrow Ans - (D)

Question 99

Read the given data and answer the questions ?

Measured On Birthday	Hieght of Children in CMs
4	100
5	105
6	110
7	115
8	125
9	135
10	140
11	145
12	155
13	160
14	165
15	170
16	175

What is the increase in height of child from 5th birthday to 16 birthday ?

- A 75 cms
- B 70 cms
- C 65 cms
- D 80 cms

Answer: B

Explanation:

Height on 5th birthday = 105 cm

Height on 16th birthday = 175 cm

Increase in height = $175 - 105 = 70$ cm

=> Ans - (B)

Question 100

Read the data answer the given questions

Deep Sleep	25
Dreaming	10
Light Sleep	10
Exreamly Sleep	15
Awake	40

Between 10pm to 6am, a fitness band records the following data. How long was the user Dreaming or was Awake?

- A 4 hours
- B 3 hours
- C 2 hours
- D 4.5 hours

Answer: A

Explanation:

Total time between 10 pm to 6 am = 8 hours

% time spent on dreaming and being awake = $10 + 40 = 50\%$

=> Time spent on dreaming and being awake = $\frac{50}{100} \times 8$

= $\frac{8}{2} = 4$ hours

=> Ans - (A)

SSC CHSL Free App

25 SSC CHSL Mocks for just Rs. 149

SSC CHSL Free Mock Test

SSC CHSL Previous Papers (DOWNLOAD PDF)

SSC CGL Previous Papers (DOWNLOAD PDF)

SSC CGL Free Mock Test (Latest Pattern)

SSC CHSL Important Questions and Answers (Download PDF)

SSC CHSL Study Material

SSC CHSL Free App

Daily Free SSC Practice Set

Free SSC Study Material (18,000 Solved Questions)

1500+ Very Important Free SSC Solved Questions

SSC Exam Update Videos & Free Study Material (YouTube Channel)

Latest Job Updates on Telegram - Join here

Join SSC Daily Quiz Telegram Group