



CAT 2020 Quant slot-1 questions pdf

All rights reserved. No part of this publication may be reproduced, distributed, or transmitted in any form or by any means, electronic, mechanical, photocopying, recording or otherwise, or stored in any retrieval system of any nature without the permission of cracku.in, application for which shall be made to support@cracku.in

Instructions

For the following questions answer them individually

Question 1

If Y is a negative number such that $2^{Y^2(\log_3 5)} = 5^{\log_2 3}$ then Y equals to:

- A $\log_2\left(\frac{1}{5}\right)$
- B $\log_2\left(\frac{1}{3}\right)$
- C $-\log_2\left(\frac{1}{5}\right)$
- D $-\log_2\left(\frac{1}{3}\right)$

Answer: B

Explanation:

$$2^{Y^2(\log_3 5)} = 5^{Y^2(\log_3 2)}$$

$$\text{Given, } 5^{Y^2(\log_3 2)} = 5^{(\log_2 3)}$$

$$\Rightarrow Y^2 (\log_3 2) = (\log_2 3) \Rightarrow Y^2 = (\log_2 3)^2$$

$$\Rightarrow Y = (-\log_2 3) \text{ or } (\log_2 3)$$

$$\text{since } Y \text{ is a negative number, } Y = (-\log_2 3) = \left(\log_2 \frac{1}{3}\right)$$

Question 2

A gentleman decided to treat a few children in the following manner. He gives half of his total stock of toffees and one extra to the first child, and then the half of the remaining stock along with one extra to the second and continues giving away in this fashion. His total stock exhausts after he takes care of 5 children. How many toffees were there in his stock initially?

Answer:62

Explanation:

Let the initial number of chocolates be $64x$.

First child gets $32x+1$ and $32x-1$ are left.

2nd child gets $16x+1/2$ and $16x-3/2$ are left

3rd child gets $8x+1/4$ and $8x-7/4$ are left

4th child gets $4x+1/8$ and $4x-15/8$ are left

5th child gets $2x+1/16$ and $2x-31/16$ are left.

$$\text{Given, } 2x-31/16=0 \Rightarrow 2x=31/16 \Rightarrow x=31/32.$$

∴ Initially the Gentleman has $64x$ i.e. $64 \times 31/32 = 62$ chocolates.

Question 3

How many 3-digit numbers are there, for which the product of their digits is more than 2 but less than 7?

Answer:21

Explanation:

Let the number be 'abc'. Then, $2 < a \times b \times c < 7$. The product can be 3,4,5,6.

We can obtain each of these as products with the combination 1,1, x where $x = 3,4,5,6$. Each number can be arranged in 3 ways, and we have 4 such numbers: hence, a total of 12 numbers fulfilling the criteria.

We can factorize 4 as 2×2 and the combination 2,2,1 can be used to form 3 more distinct numbers.

We can factorize 6 as 2×3 and the combination 1,2,3 can be used to form 6 additional distinct numbers.

Thus a total of $12 + 3 + 6 = 21$ such numbers can be formed.

Take 3 Free CAT Mocks (With Solutions)

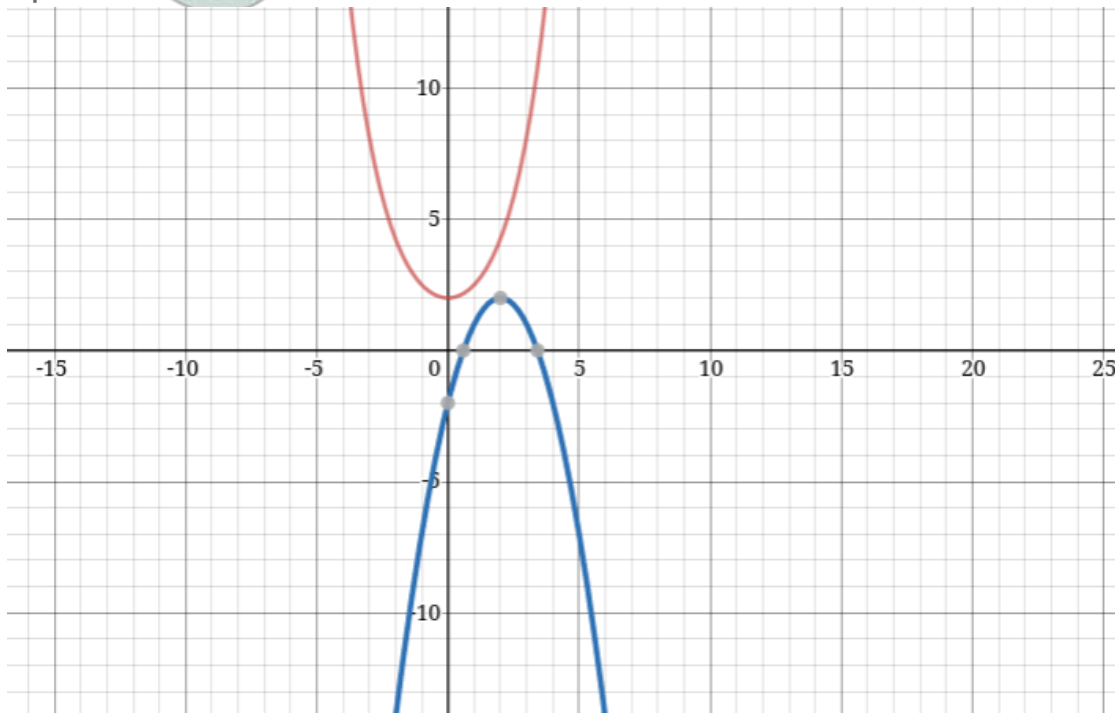
Question 4

The number of real-valued solutions of the equation $2^x + 2^{-x} = 2 - (x - 2)^2$ is:

- A 1
- B 2
- C infinite
- D 0

Answer: D

Explanation:



The graphs of $2^x + 2^{-x}$ and $2 - (x - 2)^2$ never intersect. So, number of solutions=0.

Alternate method:

We notice that the minimum value of the term in the LHS will be greater than or equal to 2 {at $x=0$; LHS = 2}. However, the term in the RHS is less than or equal to 2 {at $x=2$; RHS = 2}. The values of x at which both the sides become 2 are distinct; hence, there are zero real-valued solutions to the above equation.

Question 5

How many distinct positive integer-valued solutions exist to the equation $(X^2 - 7x + 11)^{(X^2 - 13x + 42)} = 1$?

- A 8
- B 4
- C 2
- D 6

Answer: D

Explanation:

$$(X^2 - 7x + 11)^{(X^2 - 13x + 42)} = 1$$

if $(X^2 - 13x + 42) = 0$ or $(X^2 - 7x + 11) = 1$ or $(X^2 - 7x + 11) = -1$ and $(X^2 - 13x + 42)$ is even number

For $X=6,7$ the value $(X^2 - 13x + 42)=0$

$(X^2 - 7x + 11)=1$ for $X=5,2$.

$(X^2 - 7x + 11)=-1$ for $X=3,4$ and for $X=3$ or 4 , $(X^2 - 13x + 42)$ is even number.

$\therefore \{2,3,4,5,6,7\}$ is the solution set of X .

$\therefore X$ can take six values.

Question 6

A solid right circular cone of height 27 cm is cut into two pieces along a plane parallel to its base at a height of 18 cm from the base. If the difference in volume of the two pieces is 225 cc, the volume, in cc, of the original cone is

A 243

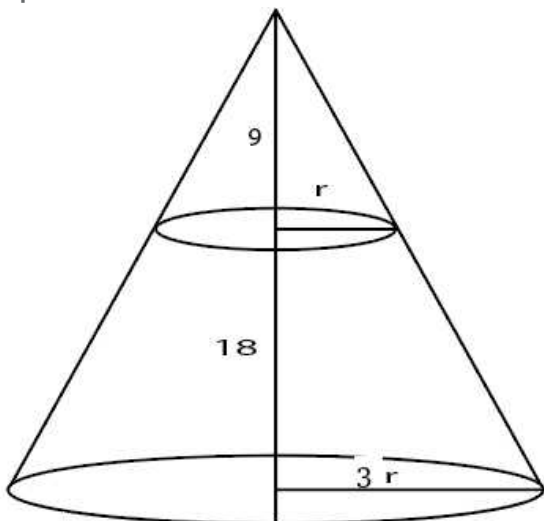
B 232

C 256

D 264

Answer: A

Explanation:



Let the base radius be $3r$.

Height of upper cone is 9 so, by symmetry radius of upper cone will be r .

Volume of frustum = $\frac{\pi}{3} (9r^2 \cdot 27 - r^2 \cdot 9)$

Volume of upper cone = $\frac{\pi}{3} \cdot r^2 \cdot 9$

Difference = $\frac{\pi}{3} \cdot 9 \cdot r^2 \cdot 25 = 225 \Rightarrow \frac{\pi}{3} \cdot r^2 = 1$

Volume of larger cone = $\frac{\pi}{3} \cdot 9r^2 \cdot 27 = 243$

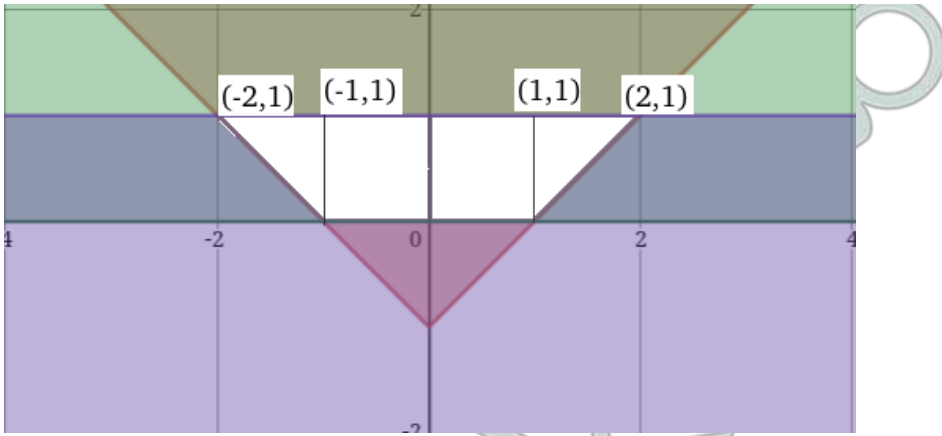
CAT Previous Papers PDF

Question 7

The area of the region satisfying the inequalities $|x| - y \leq 1, y \geq 0$ and $y \leq 1$ is

Answer:3

Explanation:



The area of the region contained by the lines $|x| - y \leq 1$, $y \geq 0$ and $y \leq 1$ is the white region.

$$\text{Total area} = \text{Area of rectangle} + 2 * \text{Area of triangle} = 2 + \left(\frac{1}{2} \times 2 \times 1\right) = 3$$

Hence, 3 is the correct answer.

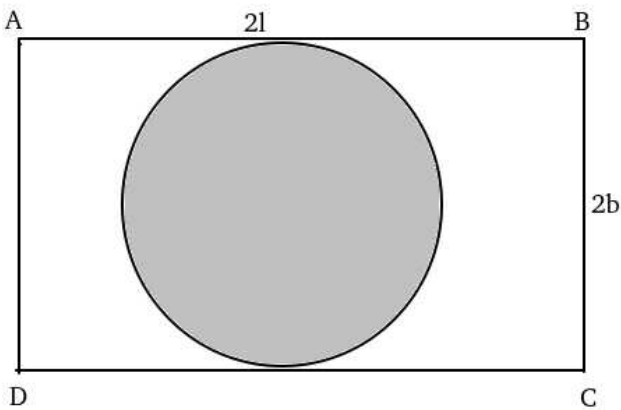
Question 8

On a rectangular metal sheet of area 135 sq in, a circle is painted such that the circle touches two opposite sides. If the area of the sheet left unpainted is two-thirds of the painted area then the perimeter of the rectangle in inches is

- A $3\sqrt{\pi}\left(5 + \frac{12}{\pi}\right)$
- B $4\sqrt{\pi}\left(3 + \frac{9}{\pi}\right)$
- C $3\sqrt{\pi}\left(\frac{5}{2} + \frac{6}{\pi}\right)$
- D $5\sqrt{\pi}\left(3 + \frac{9}{\pi}\right)$

Answer: A

Explanation:



Let ABCD be the rectangle with length $2l$ and breadth $2b$ respectively.

Area of the circle i.e. area of painted region = πb^2 .

$$\text{Given, } 4lb - \pi b^2 = \frac{2}{3}\pi b^2.$$

$$\Rightarrow 4lb = \frac{5}{3}\pi b^2.$$

$$\Rightarrow l = \frac{5\pi}{12}b.$$

$$\text{Given, } 4lb = 135 \Rightarrow 4 \times \frac{5\pi}{12}b^2 = 135 \Rightarrow b = \sqrt{\frac{9}{\pi}}$$

$$\Rightarrow l = \frac{15}{4}\sqrt{\pi}$$

Perimeter of rectangle $= 4(l+b) = 4\left(\frac{15}{4}\sqrt{\pi} + \frac{9}{\sqrt{\pi}}\right) = 3\sqrt{\pi}\left(5 + \frac{12}{\pi}\right)$.

Hence option A is correct.

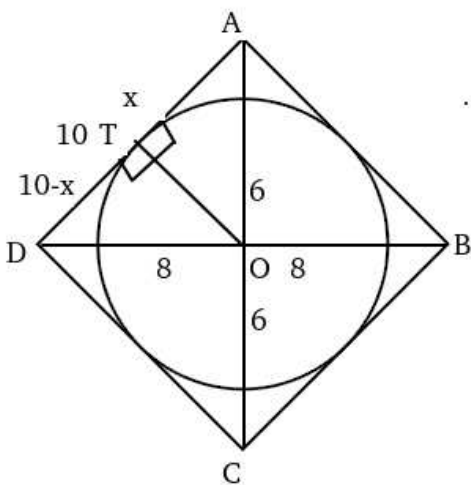
Question 9

A circle is inscribed in a rhombus with diagonals 12 cm and 16 cm. The ratio of the area of circle to the area of rhombus is

- A $\frac{6\pi}{25}$
- B $\frac{5\pi}{18}$
- C $\frac{3\pi}{25}$
- D $\frac{2\pi}{15}$

Answer: A

Explanation:



Let the length of radius be 'r'.

From the above diagram,

$$x^2 + r^2 = 6^2 \dots(i)$$

$$(10 - x)^2 + r^2 = 8^2 \dots(ii)$$

Subtracting (i) from (ii), we get:

$$x = 3.6 \Rightarrow r^2 = 36 - (3.6)^2 \Rightarrow r^2 = 36 - (3.6)^2 = 23.04.$$

$$\text{Area of circle} = \pi r^2 = 23.04\pi$$

$$\text{Area of rhombus} = \frac{1}{2} \times d_1 \times d_2 = \frac{1}{2} \times 12 \times 16 = 96.$$

$$\therefore \text{Ratio of areas} = \frac{23.04\pi}{96} = \frac{6\pi}{25}$$

Free CAT Exam Preparation App

Question 10

Among 100 students, x_1 have birthdays in January, x_2 have birthdays in February, and so on. If $x_0 = \max(x_1, x_2, \dots, x_{12})$, then the smallest possible value of x_0 is

- A 8
- B 9
- C 10

D 12

Answer: B

Explanation:

$$x_0 = \max(x_1, x_2, \dots, x_{12})$$

x_0 will be minimum if x_1, x_2, \dots, x_{12} are close to each other

$$100/12=8.33$$

$\therefore \max(x_1, x_2, \dots, x_{12})$ will be minimum if $(x_1, x_2, \dots, x_{12})=(9,9,9,9,8,8,8,8,8,8,8,8)$

\therefore Option B is correct.

Question 11

A straight road connects points A and B. Car 1 travels from A to B and Car 2 travels from B to A, both leaving at the same time. After meeting each other, they take 45 minutes and 20 minutes, respectively, to complete their journeys. If Car 1 travels at the speed of 60 km/hr, then the speed of Car 2, in km/hr, is

A 100

B 90

C 80

D 70

Answer: B

Explanation:

Let the speed of Car 2 be 'x' kmph and the time taken by the two cars to meet be 't' hours.

In 't' hours, Car 1 travels $(60 \times t)$ km while Car 2 travels $(x \times t)$ km

It is given that the time taken by Car 1 to travel $(x \times t)$ km is 45 minutes or $(3/4)$ hours. $\therefore \frac{(x \times t)}{60} = \frac{3}{4}$ or $t = \frac{180}{4x}$... (i)

Similarly, the time taken by Car 2 to travel $(60 \times t)$ km is 20 minutes or $(1/3)$ hours. $\therefore \frac{(60 \times t)}{x} = \frac{1}{3}$ or $\therefore t = \frac{x}{180}$... (ii)

Equating the values in (i) and (ii), and solving for x:

$$\therefore \frac{180}{4x} = \frac{x}{180} \rightarrow x = 90 \text{ kmph}$$

Hence, Option B is the correct answer.

Question 12

A person spent Rs 50000 to purchase a desktop computer and a laptop computer. He sold the desktop at 20% profit and the laptop at 10% loss. If overall he made a 2% profit then the purchase price, in rupees, of the desktop is

Answer: 20000

Explanation:

Let the price of desktop and laptop be x,y respectively.

Given,

$$x+y=50000 \dots (i)$$

$$1.2x+0.9y=50000(1.02)=51000 \dots (ii)$$

(ii)-0.9(i) gives

$$0.3x=6000 \Rightarrow x=20000.$$

Question 13

A solution, of volume 40 litres, has dye and water in the proportion 2 : 3. Water is added to the solution to change this proportion to 2 : 5. If one fourths of this diluted solution is taken out, how many litres of dye must be added to the remaining solution to bring the proportion back to 2 : 3?

Answer:8

Explanation:

Initially the amount of Dye and Water are 16,24 respectively.

To make the ratio of Dye to Water to 2:5 the amount of water should be 40l for 16l of Dye=> 16l of water is added.

Now, the Dye and Water are 16,40 respectively.

After removing 1/4th of solution the amount of Dye and Water will be 12,30l respectively.

To have Dye and Water in the ratio of 2:3, for 30l of water we need 20l of Dye => 8l of Dye should be added.

Hence, 8 is correct answer.

Question 14

If $x = (4096)^{7+4\sqrt{3}}$, then which of the following equals to 64?

A $\frac{x^7}{x^{2\sqrt{3}}}$

B $\frac{x^{\frac{7}{4}}}{x^{\sqrt{3}}}$

C $\frac{x^{\frac{7}{2}}}{x^{2\sqrt{3}}}$

D $\frac{x^7}{x^{4\sqrt{3}}}$

Answer: C

Explanation:

$$x = 2^{12(7+4\sqrt{3})}$$

$$x^{\frac{7}{2}} = 2^{42(7+4\sqrt{3})}$$

$$x^{2\sqrt{3}} = 2^{24\sqrt{3}(7+4\sqrt{3})}$$

$$\frac{x^{\frac{7}{2}}}{x^{2\sqrt{3}}} = 2^{(7+4\sqrt{3})(42-24\sqrt{3})} = 2^{(7+4\sqrt{3})(7-4\sqrt{3})6} = 2^6$$

Hence C is correct answer.

Question 15

An alloy is prepared by mixing three metals A, B and C in the proportion 3 : 4 : 7 by volume. Weights of the same volume of the metals A, B and C are in the ratio 5 : 2 : 6. In 130 kg of the alloy, the weight, in kg, of the metal C is

A 48

B 84

C 70

D 96

Answer: B

Explanation:

Let the volume of Metals A,B,C be 3x, 4x, 7x

Ratio weights of given volume be $5y, 2y, 6y$

$$\therefore 12xy + 8xy + 42xy = 130 \Rightarrow 65xy = 130 \Rightarrow xy = 2.$$

\therefore The weight, in kg. of the metal C is $42xy = 84$.

Top-500 Free CAT Questions (With Solutions)

Question 16

The number of distinct real roots of the equation $(x + \frac{1}{x})^2 - 3(x + \frac{1}{x}) + 2 = 0$ equals

Answer: 1

Explanation:

$$\text{Let } a = x + \frac{1}{x}$$

$$\text{So, the given equation is } a^2 - 3a + 2 = 0$$

So, a can be either 2 or 1.

If $a = 1$, $x + \frac{1}{x} = 1$ and it has no real roots.

If $a = 2$, $x + \frac{1}{x} = 2$ and it has exactly one real root which is $x = 1$

So, the total number of distinct real roots of the given equation is 1

Question 17

If $\log_4 5 = (\log_4 y)(\log_6 \sqrt{5})$, then y equals

Answer: 36

Explanation:

$$\frac{\log 5}{2 \log 4} = \frac{\log y}{2 \log 4} \cdot \frac{\log 5}{2 \log 6}$$

$$\log 36 = \log y; \therefore y = 36$$

Question 18

Leaving home at the same time, Amal reaches the office at 10:15 am if he travels at 8 km/hr, and at 9:40 am if he travels at 15 km/hr. Leaving home at 9:10 am, at what speed, in km/hr, must he travel so as to reach office exactly at 10 am?

A 13

B 12

C 14

D 11

Answer: B

Explanation:

The difference in the time take to traverse the same distance ' d ' at two different speeds is 35 minutes. Equating this: $\frac{d}{8} - \frac{d}{15} = \frac{35}{60}$

On solving, we obtain $d = 10 \text{ kms}$. Let $x \text{ kmph}$ be the speed at which Amal needs to travel to reach the office in 50 minutes; then

$$\frac{10}{x} = \frac{50}{60} \text{ or } x = 12 \text{ kmph. Hence, Option B is the correct answer.}$$

Free CAT Study Material

Question 19

A train travelled at one-thirds of its usual speed, and hence reached the destination 30 minutes after the scheduled time. On its return journey, the train initially travelled at its usual speed for 5 minutes but then stopped for 4 minutes for an emergency. The percentage by which the train must now increase its usual speed so as to reach the destination at the scheduled time, is nearest to

- A 50
- B 58
- C 67
- D 61

Answer: C

Explanation:

Let the total distance be 'D' km and the speed of the train be 's' kmph. The time taken to cover D at speed d is 't' hours. Based on the information: on equating the distance, we get $s \times t = \frac{s}{3} \times (t + \frac{1}{2})$

On solving we acquire the value of $t = \frac{1}{4}$ or 15 mins. We understand that during the return journey, the first 5 minutes are spent traveling at speed 's' {distance traveled in terms of s = $\frac{s}{12}$ }. Remaining distance in terms of 's' = $\frac{s}{4} - \frac{s}{12} = \frac{s}{6}$

The rest 4 minutes of stoppage added to this initial 5 minutes amounts to a total of 9 minutes. The train has to complete the rest of the journey in $15 - 9 = 6 \text{ mins}$ or $\frac{1}{10}$ hours}. Thus, let 'x' kmph be the new value of speed. Based on the above, we get $\frac{s}{x} = \frac{1}{10}$ or $x = \frac{10s}{6}$

Since the increase in speed needs to be calculated: $\left(\frac{\frac{10s}{6} - s}{s}\right) \times 100 = \frac{200}{3} \approx 67\%$ increase.

Hence, Option C is the correct answer.

Question 20

The mean of all 4-digit even natural numbers of the form 'aabb', where $a > 0$, is

- A 4466
- B 5050
- C 4864
- D 5544

Answer: D

Explanation:

The four digit even numbers will be of form:

1100,1122,1144...1188,2200,2222,2244....9900,9922,9944,9966,9988

Their sum 'S' will be $(1100+1100+22+1100+44+1100+66+1100+88)+(2200+2200+22+2200+44+...)+...+(9900+9900+22+9900+44+9900+66+9900+88)$

$$\Rightarrow S=1100*5+(22+44+66+88)+2200*5+(22+44+66+88)...+9900*5+(22+44+66+88)$$

$$\Rightarrow S=5*1100(1+2+3+...9)+9(22+44+66+88)$$

$$\Rightarrow S=5*1100*9*10/2 + 9*11*20$$

Total number of numbers are $9*5=45$

∴ Mean will be $S/45 = 5*1100+44=5544$.

Option D

Question 21

Two persons are walking beside a railway track at respective speeds of 2 and 4 km per hour in the same direction. A train came from behind them and crossed them in 90 and 100 seconds, respectively. The time, in seconds, taken by the train to cross an electric post is nearest to

- A 87

- B 82
C 78
D 75

Answer: B

Explanation:

Let the length of the train be l *kms* and speed be s *kmph*. Base on the two scenarios presented, we obtain:

$$\frac{l}{s-2} = \frac{90}{3600} \dots(i) \text{ and } \frac{l}{s-4} = \frac{100}{3600} \dots(ii)$$

On dividing (ii) by (i) and simplifying we acquire the value of s as 22 *kmph*. Substituting this value in (i), we have $l = \frac{90}{3600} \times 20$ *kms* {keeping it in km and hours for convenience}

Since we need to find $\frac{l}{s}$, let this be equal to x . Then, $x = 90 \times \frac{20}{22} = 81.81 \approx 82$ *seconds*

Hence, Option B is the correct choice.

Free CAT Preparation Video Lectures

Question 22

If a , b and c are positive integers such that $ab = 432$, $bc = 96$ and $c < 9$, then the smallest possible value of $a + b + c$ is

- A 49
B 56
C 59
D 46

Answer: D

Explanation:

Since $c < 9$, we can have the following viable combinations for $b \times c = 96$ (given our objective is to minimize the sum):

$$48 \times 2; 32 \times 3; 24 \times 4; 16 \times 6; 12 \times 8$$

Similarly, we can factorize $a \times b = 432$ into its factors. On close observation, we notice that 18×24 and 24×4 corresponding to $a \times b$ and $b \times c$ respectively together render us with the least value of the sum of $a + b + c = 18 + 24 + 4 = 46$

Hence, Option D is the correct answer.

Question 23

In a group of people, 28% of the members are young while the rest are old. If 65% of the members are literates, and 25% of the literates are young, then the percentage of old people among the illiterates is nearest to

- A 62
B 55
C 59
D 66

Answer: D

Explanation:

Let 'x' be the strength of group G. Based on the information, $0.65x$ constitutes of literate people {the rest $0.35x =$ illiterate}

Of this $0.65x$, 75% are old people $= (0.75)0.65x$ old literates. The total number of old people in group G is $0.72x$ {72% of the total}. Thus, the total number of old people who are illiterate $= 0.72x - 0.4875x = 0.2325x$. This is $\frac{0.2325x}{0.35x} \times 100 \approx 66\%$ of the total number

of illiterates. Hence, Option D is the correct answer.

Question 24

Veeru invested Rs 10000 at 5% simple annual interest, and exactly after two years, Joy invested Rs 8000 at 10% simple annual interest. How many years after Veeru's investment, will their balances, i.e., principal plus accumulated interest, be equal?

Answer:12

Explanation:

Let their individual Amounts be equal after 't' years. Let their initial investments amount to A_V and A_J ;

$$A_V = 10,000 \left(1 + \frac{5t}{100}\right) \text{ and } A_J = 8,000 \left(1 + \frac{10(t-2)}{100}\right)$$

$$\text{Equating both: } 10,000 \left(1 + \frac{5t}{100}\right) = 8,000 \left(1 + \frac{10(t-2)}{100}\right)$$

On simplifying both sides, we get: $15t = 180$; $t = 12$

Daily Free CAT Practice Tests

Question 25

If $f(5+x) = f(5-x)$ for every real x , and $f(x) = 0$ has four distinct real roots, then the sum of these roots is

- A 0
- B 40
- C 10
- D 20

Answer: D

Explanation:

Let 'r' be the root of the function. It follows that $f(r) = 0$. We can represent this as $f(r) = f\{5 - (5 - r)\}$

Based on the relation: $f(5-x) = f(5+x)$; $f(r) = f\{5 - (5 - r)\} = f\{5 + (5 - r)\}$

$$\therefore f(r) = f(10 - r)$$

Thus, every root 'r' is associated with another root '(10-r)' [these form a pair]. For even distinct roots, in this case four, let us assume the roots to be as follows: $r_1, (10 - r_1), r_2, (10 - r_2)$

$$\text{The sum of these roots} = r_1 + (10 - r_1) + r_2 + (10 - r_2) = 20$$

Hence, Option D is the correct answer.

Question 26

Let A, B and C be three positive integers such that the sum of A and the mean of B and C is 5. In addition, the sum of B and the mean of A and C is 7. Then the sum of A and B is

- A 5
- B 4
- C 6
- D 7

Answer: C

Explanation:

Given

$$A + \frac{B+C}{2} = 5 \Rightarrow 2A + B + C = 10 \dots (i)$$

$$(A+C)/2 + B = 7 \Rightarrow A + 2B + C = 14 \dots (ii)$$

$$(i) - (ii) \Rightarrow B - A = 4 \Rightarrow B = 4 + A.$$

Given, A, B, C are positive integers

$$\text{If } A=1 \Rightarrow B=5 \Rightarrow C=3$$

If $A=2 \Rightarrow B=6 \Rightarrow C=0$ but this is invalid as C is positive.

Similarly if $A > 2$ C will be negative and cases are not valid.

Hence, $A+B=6$.

[Take 3 Free CAT Mocks \(With Solutions\)](#)

[CAT Previous Papers PDF](#)

[Free CAT Exam Preparation App](#)

[CAT Formulas PDF \[Download Now\]](#)

[Top-500 Free CAT Questions \(With Solutions\)](#)

[Free CAT Study Material](#)

[Free CAT Preparation Video Lectures](#)

[Daily Free CAT Practice Tests](#)

[CAT Syllabus \(Download PDF\)](#)

[Free Videos for CAT Preparation](#)

[CAT Percentile Predictor](#)

[Important Verbal Ability Questions for CAT \(Download PDF\)](#)

[How to prepare for Logical Reasoning for CAT](#)

[How to prepare for Verbal Ability for CAT](#)

[How to prepare for Data Interpretation for CAT](#)

[How to prepare for Quantitative aptitude for CAT](#)

[Data Interpretation for CAT Questions \(download pdf\)](#)

[Logical Reasoning for CAT Questions \(download pdf\)](#)

[Quantitative Aptitude for CAT Questions \(download pdf\)](#)

[Know the CAT Percentile Required for IIM Calls](#)

[Join MBA Telegram Group](#)

[Enroll for Excellent CAT/MBA courses](#)

[Cracku CAT Success Stories](#)

[Subscribe to MBA Exams Youtube Channel](#)

[CMAT Free Solved Previous Papers.](#)

[PGDBA Previous Year Papers \(Download PDF\)](#) [PGDBA Previous Year Papers \(Download PDF\)](#)

[10 MAHCET MBA Mocks - Just Rs. 499](#)

[Join CAT 2021 Online Coaching](#)

[Take a MAH-MBA CET Mocks Here](#)

[Enroll to MAH-MBA CET Crash Course](#)