



SBI Associate 2011 PO

All rights reserved. No part of this publication may be reproduced, distributed, or transmitted in any form or by any means, electronic, mechanical, photocopying, recording or otherwise, or stored in any retrieval system of any nature without the permission of cracku.in, application for which shall be made to support@cracku.in

Reasoning

Instructions

Study the following information carefully and answer the question.

Four of the following five are alike in a certain way and hence form a group. Which is the one that does not belong to the group ?

Question 1

.....

- A Break
- B Change
- C Split
- D Divide
- E Separate

Answer: B

Explanation:

Except Change, all other words refer to action of 'making parts of something whole/complete'. Change means to 'transform' or in some context 'substitute'.

Hence, the correct option is B.

Question 2

.....

- A Train
- B Instruct
- C Educate
- D Advocate
- E Coach

Answer: D

Explanation:

Advocate means to 'counsel' or 'represent someone in legal case'. All other words concern 'imparting of knowledge or information'.

Hence, correct option is option D.

Question 3

.....

- A Extend
- B Higher
- C Upward
- D Rise

E Ascend

Answer: A

Explanation:

Except 'Extend', all other words mean or represent action of moving upward. Extend means to 'append'.

Hence, the correct option is option A.

Instructions

For the following questions answer them individually

Question 4

Which of the following symbols should replace question mark in the given expression in order to make the expression ' $A > D$ ' and ' $F \geq C$ ' definitely true ?

$$A > B \geq C ? D \leq E = F$$

A >

B <

C \leq

D =

E Either = or \geq

Answer: D

Explanation:

The expression, $A > B \geq C = D \leq E = F$,

Means that A is greater than B which can be greater than or equal to C. Now, if C is equal to D, naturally A is greter than D.

Also, D is less than or equal to E. As E and F are equal, D is less than or equal to F. Hence, C is less than or equal to F.

Download Highly Rated Banking APP

Question 5

Which of the following expression is definitely true if the given expression ' $R < P$ ' and ' $S > Q$ ' are definitely true?

A $P > Q = R \leq T < S$

B $S > T \geq R > Q$

C $Q > R \leq T > P \geq S$

D $S > T \geq R > Q > P$

E None of these

Answer: A

Explanation:

$$P > Q = R \leq T < S$$

means P is greater than Q and hence, P is greater than R. R is less than or equal to T. T is less than S. Therefore, Q is less than T.

Hence, the correct option is A.

Question 6

Read the following information carefully and answer the question which follows:

' $A \times B$ ' means 'A is the father of B'.

' $A + B$ ' means 'A is the daughter of B'.

' $A \div B$ ' means 'A is the son of B'.

' $A - B$ ' means 'A is the sister of B'.

What will come in place of question mark to establish that P is the son-in-law of S in the following expression ?

$P \times Q + R - T ? S$

- A +
- B ×
- C −
- D ÷
- E Either + or ÷

Answer: E

Explanation:

From the expression $P \times Q + R - T$ we can make deductions as:

P is father of Q. Q is daughter of R. Hence, P and R are husband and wife.

Also, R is sister of T. Hence, R must be daughter or son of S for P to be son in law of S.

Hence, the correct option is E

Instructions

Study the following information to answer the given question:

Twelve people are sitting in two parallel rows containing six people each such that they are equidistant from each other. In row 1: P, Q, R, S, T and V are seated and all of them are facing South. In row 2: A, B, C, D, E and F are seated and all of them are facing North. Therefore in the given seating arrangement, each member is seated in a row faces another member of the other row.

S sits third to the right of Q.

Either S or Q sits at an extreme end of the line.

The one who faces Q sits second to the right of E.

Two people sit between B and F.

Neither B nor F sits at an extreme end of the line.

The immediate neighbour of B faces the person who sits third to the left of P.

R and T are immediate neighbours

C sits second to the left of A

T does not face the immediate neighbour of D.

Question 7

Who amongst the following sit at the extreme ends of the rows ?

- A S, D
- B Q, A
- C V, C
- D P, D
- E Q, F

Answer: D

Explanation:

From the first three conditions, two solns are possible

S _ _ Q _ _

_ E _ _ _ _

or

_ _ S _ _ Q

_ _ _ E _ _

As B and F have two people between them and neither are at the extremes, they must be in the second and fifth place. Hence, we can rule out configuration 1.

From the 6th condition, B should be fifth from left and F second.

Thus, we get

P _ S _ _ Q

_ F _ E B _

As C is second to the left of A, C must be first from left and A third. Hence, D is last from left. Thus, we can place all the people as follows

↓ P V S T R Q

↑ C F A E B D

Hence, P and D are at extreme ends.

SBI PO Solved Previous Papers (Download PDF)

Question 8

Who amongst the following faces S?

A A

B B

C C

D D

E F

Answer: A

Explanation:

From the first three conditions, two solns are possible

S _ _ Q _ _

_ E _ _ _ _

or

_ _ S _ _ Q

_ _ _ E _ _

As B and F have two people between them and neither are at the extremes, they must be in the second and fifth place. Hence, we can rule out configuration 1.

From the 6th condition, B should be fifth from left and F second.

Thus, we get

P _ S _ _ Q

_ F _ E B _

As C is second to the left of A, C must be first from left and A third. Hence, D is last from left. Thus, we can place all the people as

follows

↓ P V S T R Q

↑ C F A E B D

Hence, it is evident that S faces A. Option A is correct.

Question 9

How many persons are seated between V and R ?

- A One
- B Two
- C Three
- D Four
- E None of these

Answer: B

Explanation:

From the first three conditions, two solns are possible

S _ _ Q _ _

_ E _ _ _ _

or

_ _ S _ _ Q

_ _ _ E _ _

As B and F have two people between them and neither are at the extremes, they must be in the second and fifth place. Hence, we can rule out configuration 1.

From the 6th condition, B should be fifth from left and F second.

Thus, we get

P _ S _ _ Q

_ F _ E B _

As C is second to the left of A, C must be first from left and A third. Hence, D is last from left. Thus, we can place all the people as follows

↓ P V S T R Q

↑ C F A E B D

Two persons are seated between V and R.

Option B is correct option.

Question 10

P is related to A in the same way as S is related to B based on the given arrangement. Which of the following is T related to, following the same pattern ?

- A C
- B D
- C E
- D F

E Cannot be determined

Answer: B

Explanation:

From the first three conditions, two solns are possible

S _ _ Q _ _

_ E _ _ _ _

or

_ _ S _ _ Q

_ _ _ E _ _

As B and F have two people between them and neither are at the extremes, they must be in the second and fifth place. Hence, we can rule out configuration 1.

From the 6th condition, B should be fifth from left and F second.

Thus, we get

P _ S _ _ Q

_ F _ E B _

As C is second to the left of A, C must be first from left and A third. Hence, D is last from left. Thus, we can place all the people as follows

↓ P V S T R Q

↑ C F A E B D

In the given arrangement, A is two places right of C which faces P.

B is two places to the right of A which faces S.

D is two places to the right of E which faces T.

Hence, the option correct option is B.

Get Free Study Material & Updates - Whatsapp "Updates" to 7661025557

Question 11

Which of the following is true regarding T ?

A F faces T

B V is an immediate neighbour of T

C F faces the one who is second to the right of T

D T sits at one of the extreme ends of the line

E R sits second to the right of T.

Answer: C

Explanation:

From the first three conditions, two solns are possible

S _ _ Q _ _

_ E _ _ _ _

or

_ _ S _ _ Q

---E---

As B and F have two people between them and neither are at the extremes, they must be in the second and fifth place. Hence, we can rule out configuration 1.

From the 6th condition, B should be fifth from left and F second.

Thus, we get

P _ S _ _ Q

_ F _ E B _

As C is second to the left of A, C must be first from left and A third. Hence, D is last from left. Thus, we can place all the people as follows

↓ P V S T R Q

↑ C F A E B D

F faces V who is second to the right of T.

Hence, option C is correct.

Question 12

Four of the following five are alike in a certain way based on the give arrangements and so form a group. Which is the one that does not belong to that group ?

A A-T

B B-T

C F-P

D C-V

E E-Q

Answer: E

Explanation:

From the first three conditions, two solns are possible

S _ _ Q _ _

_ E _ _ _ _

or

_ _ S _ _ Q

_ _ _ E _ _

As B and F have two people between them and neither are at the extremes, they must be in the second and fifth place. Hence, we can rule out configuration 1.

From the 6th condition, B should be fifth from left and F second.

Thus, we get

P _ S _ _ Q

_ F _ E B _

As C is second to the left of A, C must be first from left and A third. Hence, D is last from left. Thus, we can place all the people as follows

↓ P V S T R Q

↑ C F A E B D

In all pairs except E-Q, the first person faces an immediate neighbour of the second person.

Hence, option E is correct.

Instructions

Each of the question below consists of a question and two statements numbered I and II given below it. You have to decide whether the data provided in the statements are sufficient to answer the question. Read both the statements and give answer

Question 13

Which bag amongst P,Q,R,S and T is the heaviest ?

I. Bag Q is heavier than R and S. Bag T is heavier than only bag P.

II. Only three bags are lighter than R. The weight of bag Q is 50kg, which is 2 kg more than bag R.

- A If the data in statement I alone are sufficient to answer the question while the data in statement II alone are not sufficient to answer the question.
- B If the data in statement II alone are sufficient to answer the question while the data in statement I alone are not sufficient to answer the question.
- C If the data either in statement I alone or in statement II alone are sufficient to answer the question.
- D If the data even in both statements I and II together are not sufficient to answer the question.
- E If the data in both statements I and II together are necessary to answer the question.

Answer: C

Explanation:

From statement 1, we get $Q > R, S$ and $T > P$. Hence, $Q > R / S \Rightarrow S / R > T > P$. Hence, Q is the heaviest.

From statement 2, R is second heaviest and Q is heavier than R. Hence, Q is the heaviest.

Hence, the question can be answered using either statement alone.

SBI PO Free Mocks (Latest Pattern)

Question 14

Are all the five friends-A,B,C,D and E - who are seated around a circular table facing the center ?

I. A sits to the left of B. B faces the centre. D and E are immediate neighbour of each other. C sits second to the right of E.

II. D sits second to right of C. C faces the center. Both E and A are immediate neighbours of D. B sits second to the right of A.

- A If the data in statement I alone are sufficient to answer the question while the data in statement II alone are not sufficient to answer the question.
- B If the data in statement II alone are sufficient to answer the question while the data in statement I alone are not sufficient to answer the question.
- C If the data either in statement I alone or in statement II alone are sufficient to answer the question.
- D If the data even in both statements I and II together are not sufficient to answer the question.
- E If the data in both statements I and II together are necessary to answer the question.

Answer: B

Explanation:

Data in statement II alone is sufficient to give us the idea that 5 friends are sitting around a circular table.

Data in statement I contains missing information regarding the position of E with respect to A or B. Hence, we cannot say with surety whether the A,B,C,D and E are facing the centre by sitting in circular manner or not.

Hence, option B is correct.

Question 15

In a college, five different subjects, viz Physics Chemistry, Botany, Zoology and Mathematics are taught on five different days of the same week starting from Monday and ending on Friday. Is Chemistry taught on Wednesday?

I. Two subjects are taught between Zoology and Mathematics. Mathematics is taught before Zoology. Chemistry is taught on the day immediately next to the day when Physics is taught. Botany is not taught on Friday.

II. Three lectures are scheduled between the lectures of Botany and Zoology. Mathematics is taught immediately before Physics.

- A If the data in statement I alone are sufficient to answer the question while the data in statement II alone are not sufficient to answer the question.
- B If the data in statement II alone are sufficient to answer the question while the data in statement I alone are not sufficient to answer the question.
- C If the data either in statement I alone or in statement II alone are sufficient to answer the question.
- D If the data even in both statements I and II together are not sufficient to answer the question.
- E If the data in both statements I and II together are necessary to answer the question.

Answer: A

Explanation:

Data in statement 1 is enough to give us idea about the order of the subjects taken serially on each day of the week.

The table formed is:

Botany	Monday
Maths	Tuesday
Physics	Wednesday
Chemistry	Thursday
Zoo	Friday

Hence, statement 1 is sufficient to help us form this table.

Question 16

Is it 9 o' clock now?

I. After half an hour the minute and the hour hands of the clock will make an angle of exactly 90 with each other

II. Exactly 15 minutes ago the hour and the minute hands of the clock coincided with each other

- A If the data in statement I alone are sufficient to answer the question while the data in statement II alone are not sufficient to answer the question.
- B If the data in statement II alone are sufficient to answer the question while the data in statement I alone are not sufficient to answer the question.
- C If the data either in statement I alone or in statement II alone are sufficient to answer the question.
- D If the data even in both statements I and II together are not sufficient to answer the question.
- E If the data in both statements I and II together are necessary to answer the question.

Answer: A

Explanation:

Here, the data in statement 1 is sufficient to answer the question.

Half an hour ago, the hour hand will be between 8 and 9. After half, the hour hand will be at 9 while minute hand will be on 12.

Therefore, option A is correct.

Question 17

Is F granddaughter of B ?

I.B is the father of M.M is the sister of T.T is the mother of F.

II.S is the son of F. V is the daughter of F. R is the brother of T.

- A** If the data in statement I alone are sufficient to answer the question while the data in statement II alone are not sufficient to answer the question.
- B** If the data in statement II alone are sufficient to answer the question while the data in statement I alone are not sufficient to answer the question.
- C** If the data either in statement I alone or in statement II alone are sufficient to answer the question.
- D** If the data even in both statements I and II together are not sufficient to answer the question.
- E** If the data in both statements I and II together are necessary to answer the question.

Answer: D

Explanation:

The data in statement 1 gives us the relation that B is grandfather of F.
But even data from both the statements is insufficient to give the gender of F.

F can be grandson or granddaughter of B.

Hence correct option is D.

Instructions

Study the following information to answer the given questions:

A word and number arrangement machine when given an input line of words and numbers rearranges them following a particular rule in each step. The following is an illustration of input and rearrangement.(All the numbers are two-digit numbers and are arranged as per some logic based on the value of the numbers.)

Input:win 56 32 93 bat for 46 him 28 11 give chance
Step I:93 56 32 bat for 46 him 28 11 give chance win
Step II:11 93 56 32 bat for 46 28 give chance win him
Step III:56 11 93 32 bat for 46 28 chance win him give
Step IV:28 56 11 93 32 bat win him give for chance bat
Step V:46 28 56 11 93 32 bat win him give for chance
Step VI:32 46 28 56 11 93 win him give for chance bat
Step VI is the last step of the arrangement the above input.

Input for the question:

Input:fun 89 at the 28 16 base camp 35 53 here 68
(All the number given in the arrangement are two digit numbers.)

Question 18

Which of the following would be step II ?

- A** 89 fun at 28 16 base camp 35 53 here 68 the
- B** 35 53 28 68 16 89 the here fun camp base at
- C** 16 89 at fun 28 camp base 35 53 68 the here
- D** 53 28 68 16 89 35 the here fun camp base at
- E** None of these

Answer: E

Explanation:

Data provided to us is:

Input:win 56 32 93 bat for 46 him 28 11 give chance

Step I: 93 56 32 bat for 46 him 28 11 give chance win
Step II: 11 93 56 32 bat for 46 28 give chance win him
Step III: 56 11 93 32 bat for 46 28 chance win him give
Step IV: 28 56 11 93 32 bat win him give for chance bat
Step V: 46 28 56 11 93 32 bat win him give for chance
Step VI: 32 46 28 56 11 93 win him give for chance bat
Step VI is the last step of the arrangement the above input.

By analysing the data we get,

The numbers are shifted in such a manner that alternately highest and lowest number are shifted leftwards.
The words are shifted leftwards such that they are moved in descending order in alphabetical series.

Hence for us input is,

Input: fun 89 at the 28 16 base camp 35 53 here 68
Step I: 16 fun 89 at 28 base camp 35 53 here 68 the
Step II: 89 16 fun at 28 base camp 35 53 68 the here
Step III: 28 89 16 at base camp 35 53 68 the here from
Step IV: 68 28 89 16 at base 35 53 the here fun camp
Step V: 35 68 28 89 16 at 53 the here fun camp base
Step VI: 53 35 68 28 89 16 the here fun camp base at
Hence, it is evident that none of the options matches step II.

Question 19

Which word/number would be at seventh position from the left in step IV ?

- A base
- B at
- C 35
- D the
- E 53

Answer: C

Explanation:

Data provided to us is:

Input: win 56 32 93 bat for 46 him 28 11 give chance
Step I: 93 56 32 bat for 46 him 28 11 give chance win
Step II: 11 93 56 32 bat for 46 28 give chance win him
Step III: 56 11 93 32 bat for 46 28 chance win him give
Step IV: 28 56 11 93 32 bat win him give for chance bat
Step V: 46 28 56 11 93 32 bat win him give for chance
Step VI: 32 46 28 56 11 93 win him give for chance bat
Step VI is the last step of the arrangement the above input.

By analysing the data we get,

The numbers are shifted in such a manner that alternately highest and lowest number are shifted leftwards.
The words are shifted leftwards such that they are moved in descending order in alphabetical series.

Hence for us input is,

Input: fun 89 at the 28 16 base camp 35 53 here 68
Step I: 16 fun 89 at 28 base camp 35 53 here 68 the
Step II: 89 16 fun at 28 base camp 35 53 68 the here
Step III: 28 89 16 at base camp 35 53 68 the here from
Step IV: 68 28 89 16 at base 35 53 the here fun camp
Step V: 35 68 28 89 16 at 53 the here fun camp base
Step VI: 53 35 68 28 89 16 the here fun camp base at

35 is at seventh position in step IV.

SBI Clerk Previous Papers (Download PDF)

Question 20

Which step number would be the following output ?
68 28 89 16 at base 35 53 the here fun camp

- A There will be no such step
- B III
- C II
- D V
- E IV

Answer: E

Explanation:

Data provided to us is:

Input: win 56 32 93 bat for 46 him 28 11 give chance
Step I: 93 56 32 bat for 46 him 28 11 give chance win
Step II: 11 93 56 32 bat for 46 28 give chance win him
Step III: 56 11 93 32 bat for 46 28 chance win him give
Step IV: 28 56 11 93 32 bat win him give for chance bat
Step V: 46 28 56 11 93 32 bat win him give for chance
Step VI: 32 46 28 56 11 93 win him give for chance bat
Step VI is the last step of the arrangement the above input.

By analysing the data we get,

The numbers are shifted in such a manner that alternately highest and lowest number are shifted leftwards.

The words are shifted leftwards such that they are moved in descending order in alphabetical series.

Hence for us input is,

Input: fun 89 at the 28 16 base camp 35 53 here 68
Step I: 16 fun 89 at 28 base camp 35 53 here 68 the
Step II: 89 16 fun at 28 base camp 35 53 68 the here
Step III: 28 89 16 at base camp 35 53 68 the here from
Step IV: 68 28 89 16 at base 35 53 the here fun camp
Step V: 35 68 28 89 16 at 53 the here fun camp base
Step VI: 53 35 68 28 89 16 the here fun camp base at

Hence, it is evident that answer is option E.

Instructions

Study the following information carefully and answer the given question.

Eight colleagues A,B,C,D,E,F,G and H, are sitting around a circular table facing the center but not necessarily in the same order. Each one of them holds a different post— Manager, Company Secretary, Chairman, President, Vice President, Group Leader, Financial Advisor and Managing Director.

A sits third to the right of the Managing Director. Only two people sit between the Managing Director and H. The Vice President and the company Secretary are immediate neighbours. Neither A nor H is a Vice President or a company Secretary. The Vice President is not an immediate neighbour of the Managing Director. The manager sits second to the left of E. E is not an immediate neighbour of H. The manager is an immediate neighbour of both the Group Leaders and the Financial Advisor. The Financial Advisor sits third to the right of B. B is not the Vice President. C sits on the immediate right of the Chairman. A is not the chairman. F is not an immediate neighbour of A. G is not an immediate neighbour of the Manager.

Question 21

Who amongst the following sits third to the right of E ?

A Manager

B G

C A

D Financial Advisor

E B

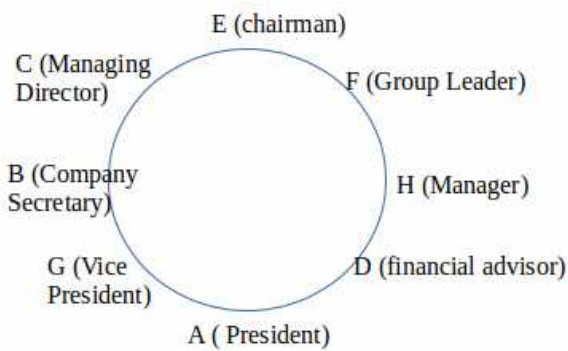
Answer: B

Explanation:

The Data given is:

A sits third to the right of the Managing Director. Only two people sit between the Managing Director and H. The Vice President and the company Secretary are immediate neighbours. Neither A nor H is a Vice President or a company Secretary. The Vice President is not an immediate neighbour of the Managing Director. The manager sits second to the left of E. E is not an immediate neighbour of H. The manager is an immediate neighbour of both the Group Leaders and the Financial Advisor. The Financial Advisor sits third to the right of B. B is not the Vice President. C sits on the immediate right of the Chairman. A is not the chairman. F is not an immediate neighbour of A. G is not an immediate neighbour of the Manager.

In a graphical way, this can be interpreted as:



Hence, G sits to third to the right of E.

Hence, the correct option is B.

Question 22

Four of the following five are alike in a certain way based on the given arrangement and thus form a group. Which is the one that does not belong to that group ?

A F-Chairman

B G-President

C D-Manager

D A-Financial Advisor

E B-Managing Director

Answer: E

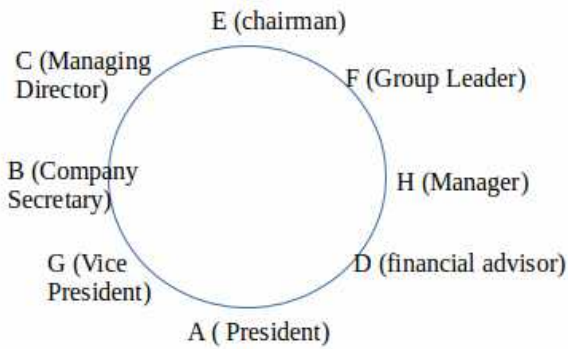
Explanation:

The Data given is:

A sits third to the right of the Managing Director. Only two people sit between the Managing Director and H. The Vice President and the company Secretary are immediate neighbours. Neither A nor H is a Vice President or a company Secretary. The Vice President is not an immediate neighbour of the Managing Director. The manager sits second to the left of E. E is not an immediate neighbour of H. The manager is an immediate neighbour of both the Group Leaders and the Financial Advisor. The Financial Advisor sits third to the right of B. B is not the Vice President. C sits on the immediate right of the Chairman. A is not the chairman. F is not an immediate neighbour of A. G is not an immediate neighbour of the Manager.

manager is an immediate neighbour of both the Group Leaders and the Financial Advisor. The Financial Advisor sits third to the right of B. B is not the Vice President. C sits on the immediate right of the Chairman. A is not the chairman . F is not an immediate neighbour of A G is not an immediate neighbour of the Manager.

In a graphical way, this can be interpreted as:



Here the relation is person's name and designation of the person who sits immediately besides that person to the right. Hence, the correct answer is E

Banking Daily Free Topic Test

Question 23

Who among the following is the President of the company ?

- A A
- B C
- C H
- D G
- E D

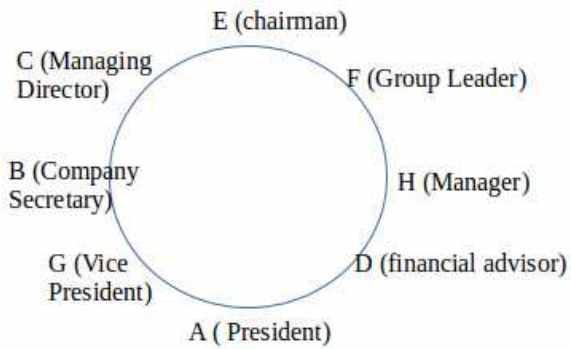
Answer: A

Explanation:

The Data given is:

A sits third to the right of the Managing Director. Only two people sit between the Managing Director and H. The Vice President and the company Secretary are immediate neighbours. Neither A nor H is a Vice President or a company Secretary. The Vice President is not an immediate neighbour of the Managing Director. The manager sits second to the left of E. E is not an immediate neighbour of H. The manager is an immediate neighbour of both the Group Leaders and the Financial Advisor. The Financial Advisor sits third to the right of B. B is not the Vice President. C sits on the immediate right of the Chairman. A is not the chairman . F is not an immediate neighbour of A G is not an immediate neighbour of the Manager.

In a graphical way, this can be interpreted as:



From our interpretation of data, we can say that A is the President of the company.

Question 24

Which of the following is true respect to the given seating arrangement ?

- A The Group Leader of the company is an immediate neighbour of the Vice-President
- B G sits second to the right of D
- C The Group Leader and the company secretary are immediate neighbour
- D The Chairman of the company sits to the immediate left of the Managing Director
- E The Group Leader sits second to the left of D

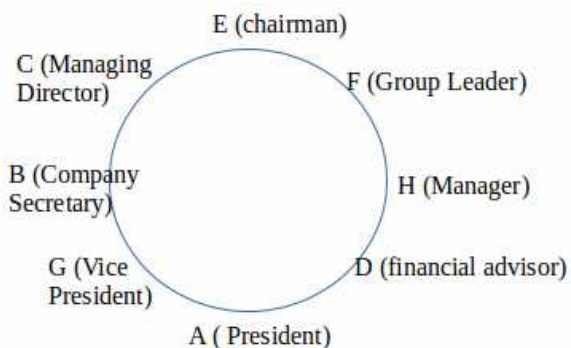
Answer: D

Explanation:

The Data given is:

A sits third to the right of the Managing Director. Only two people sit between the Managing Director and H. The Vice President and the company Secretary are immediate neighbours. Neither A nor H is a Vice President or a company Secretary. The Vice President is not an immediate neighbours of the Managing Director. The manager sits second to the left of E. E is not an immediate neighbour of H. The manager is an immediate neighbour of both the Group Leaders and the Financial Advisor. The Financial Advisor sits third to the right of B. B is not the Vice President. C sits on the immediate right of the Chairman. A is not the chairman . F is not an immediate neighbour of A G is not an immediate neighbour of the Manager.

In a graphical way, this can be interpreted as:



Only statement corresponding to the option D is correct. The Chairman of the company sits to the immediate left of the Managing Director

Option D is correct answer.

Question 25

Which of the following posts does B hold in the company ?

- A Chairman
- B Manager
- C Company Secretary
- D Vice President
- E Financial Advisor

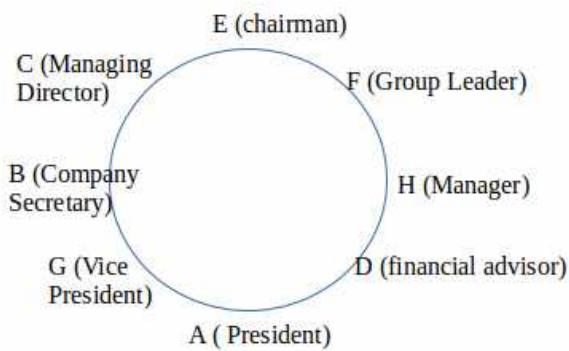
Answer: C

Explanation:

The Data given is:

A sits third to the right of the Managing Director. Only two people sit between the Managing Director and H. The Vice President and the company Secretary are immediate neighbours. Neither A nor H is a Vice President or a company Secretary. The Vice President is not an immediate neighbour of the Managing Director. The manager sits second to the left of E. E is not an immediate neighbour of H. The manager is an immediate neighbour of both the Group Leaders and the Financial Advisor. The Financial Advisor sits third to the right of B. B is not the Vice President. C sits on the immediate right of the Chairman. A is not the chairman. F is not an immediate neighbour of A. G is not an immediate neighbour of the Manager.

In a graphical way, this can be interpreted as:



B holds the post of company secretary.

Question 26

Who among the following sits exactly between the Managing Director and H ?

- A H and the Chairman
- B B and G
- C The Chairman and C
- D F and C
- E E and the Group Leader

Answer: E

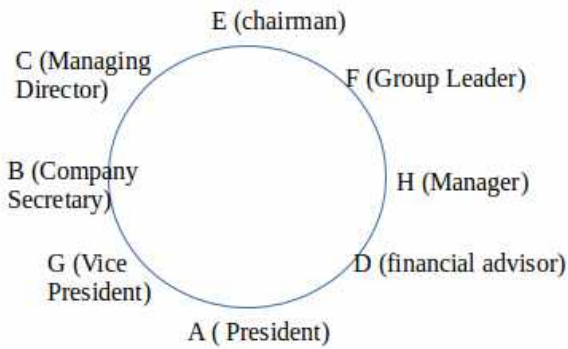
Explanation:

The Data given is:

A sits third to the right of the Managing Director. Only two people sit between the Managing Director and H. The Vice President and the company Secretary are immediate neighbours. Neither A nor H is a Vice President or a company Secretary. The Vice President is not an immediate neighbour of the Managing Director. The manager sits second to the left of E. E is not an immediate neighbour of H. The manager is an immediate neighbour of both the Group Leaders and the Financial Advisor. The Financial Advisor sits third to the right of B. B is not the Vice President. C sits on the immediate right of the Chairman. A is not the chairman. F is not an immediate neighbour of A. G is not an immediate neighbour of the Manager.

G is not an immediate neighbour of the Manager.

In a graphical way, this can be interpreted as:



Chairman i.e E and Group Leader i.e F sit between H and Managing Director.

Option E is correct.

Question 27

Who among the following is the Group Leader ?

- A C
- B F
- C G
- D H
- E A

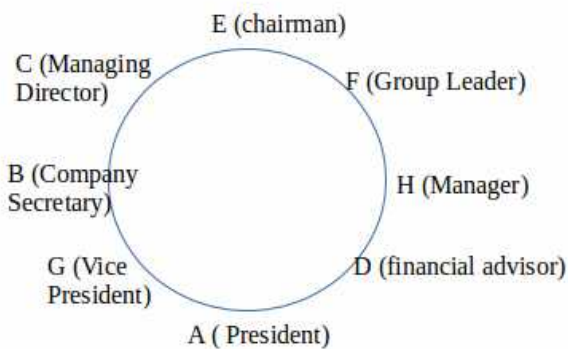
Answer: B

Explanation:

The Data given is:

A sits third to the right of the Managing Director. Only two people sit between the Managing Director and H. The Vice President and the company Secretary are immediate neighbours. Neither A nor H is a Vice President or a company Secretary. The Vice President is not an immediate neighbour of the Managing Director. The manager sits second to the left of E. E is not an immediate neighbour of H. The manager is an immediate neighbour of both the Group Leaders and the Financial Advisor. The Financial Advisor sits third to the right of B. B is not the Vice President. C sits on the immediate right of the Chairman. A is not the chairman. F is not an immediate neighbour of A. G is not an immediate neighbour of the Manager.

In a graphical way, this can be interpreted as:



F is group leader as evident from our solution. Hence, option B is correct.

Instructions

Read the following information and the sentence A,B,C,D and E given below it carefully and answer the question which follow:

A host of foreign companies are in talks with the Indian government for selling B150, a tough short-haul plane ideal for connectivity of smaller towns which is lacking in India at present.

(A) B150 planes have not only low operating costs than competing planes like Cezana but also a much better track record in terms of safety and efficiency.

(B) The profit margin of road transport operators in the smaller towns connected by B150 planes has been reduced substantially as a majority of people prefer air transport over other means of transport.

(C) Smaller towns at present, are better connected by roads and railways as compared to flight services.

(D) B150 planes are capable of operating in sectors where large airlines cannot fly due to challenging conditions such as mist short runways etc. Such planes can also double up as cargo planes and charter flights for the rich and the elite

(E) B150 planes need to operate in the existing airports which are situated in bigger cities only and are poorly connected to the smaller cities.

Question 28

Which of the statements (A),(B),(C),(D) and (E) can be inferred from the facts/information given in the statement ? (An inference is something which is not directly stated but can be inferred from the given facts.)

- A Only A
- B Only B
- C Only C
- D Both B and D
- E Only E

Answer: C

Explanation:

Except statement C, all other statements are making inferences based on certain assumptions.

Only statement C is inferring based on stated fact in the statement. Towns are connected by roads and railways but poorly connected by airways.

Hence, option C is correct.

Download Highly Rated Banking APP

Question 29

Which of the statements (A),(B),(C),(D) and (E) mentioned above would weaken the offer made by the foreign companies for selling B0150 planes to Indian government ?

- A A
- B B
- C C
- D D
- E E

Answer: E

Explanation:

If B0150 are operated only at airports in bigger cities, naturally they cannot be looked as means to connect towns as towns lack big airports. This, obviously, would weaken the offer made by foreign companies selling the planes to Indian government.

Hence, option E is correct.

Question 30

Which of the statements (A),(B),(C),(D)and (E) mentioned above represents a possible consequence of the success of B150 planes in smaller cities ?

- A A
- B B
- C C
- D D
- E E

Answer: B

Explanation:

If B150s are introduced, the planes would naturally be preferred by people over road transport.

Hence, this may cause to road transport operator to loose business.

Statement B is a consequence and hence option B is correct.

Question 31

Which of the statements (A),(B),(C),(D)and (E) would favor the foreign companies bid to sell B150 planes in India ?

- A Only A
- B Only B
- C Both B and C
- D Both A and D
- E Both E and C

Answer: D

Explanation:

Both the factors of low operating cost and the ability of planes to connect to sectors where big planes can't, favor the bid of foreign companies in selling the planes to Indian goernment.

Hence, both A and D are correct.

Therefore, option D is correct.

SBI PO Solved Previous Papers (Download PDF)

Instructions

Study the following information to answer the given questions:

In a certain code, 'always create new ideas ' is written as 'ba ri sha gi' ideas and new thoughts' is written as 'fa gi ma ri' 'create thoughts and insight' is written as 'ma jo ba fa', and 'new and better solutions' is written as 'ki ri to fa'.

Question 32

What is the code for 'ideas' ?

- A sha
- B ba
- C gi

- D ma
- E Cannot be determined

Answer: C

Explanation:

By analysing the relation between the given sentences and the codes we can deduce following codes and their words.

ideas=gi,
and=fa,
new=ri,
create=ba,
thoughts=ma,
insights=jo,
always= sha,
better solution= ki so.

Hence, the correct option is C.

Question 33

What does 'fa' stand for ?

- A thoughts
- B insights
- C new
- D and
- E solutions

Answer: D

Explanation:

By analysing the relation between the given sentences and the codes we can deduce following codes and their words.

ideas=gi,
and=fa,
new=ri,
create=ba,
thoughts=ma,
insights=jo,
always= sha,
better solution= ki so.

Hence, and stands for fa. Option D is correct.

Question 34

'fa lo ba' could be a code for which of the following ?

- A thoughts and action
- B create and innovate
- C ideas and thoughts
- D create new solutions
- E always better ideas

Answer: B

Explanation:

By analysing the relation between the given sentences and the codes we can deduce following codes and their words.

ideas=gi,
and=fa,
new=ri,
create=ba,
thoughts=ma,
insights=jo,
always= sha,
better solution= ki so.

Here, fa= and and ba= create. Only 'innovate (lo)' is new word.

Hence, option B is correct.

Get Free Study Material & Updates - Whatsapp "Updates" to 7661025557

Question 35

What is the code for 'new' ?

- A ki
- B ri
- C to
- D fa
- E ba

Answer: B

Explanation:

By analysing the relation between the given sentences and the codes we can deduce following codes and their words.

ideas=gi,
and=fa,
new=ri,
create=ba,
thoughts=ma,
insights=jo,
always= sha,
better solution= ki so.

Hence, option B is correct.

Question 36

Which of the following may represent 'insights always better' ?

- A jo ki to
- B ki to ri
- C sha jo ri
- D to sha jo
- E sha to ba

Answer: D

Explanation:

By analysing the relation between the given sentences and the codes we can deduce following codes and their words.

ideas=gi,
and=fa,
new=ri,
create=ba,
thoughts=ma,
insights=jo,
always= sha,
solution= so,
better = to.
Hence, option D is correct.

Question 37

What is the code for 'thoughts' ?

- A ma
- B fa
- C ba
- D jo
- E Either jo or fa

Answer: A

Explanation:

By analysing the relation between the given sentences and the codes we can deduce following codes and their words.

ideas=gi,
and=fa,
new=ri,
create=ba,
thoughts=ma,
insights=jo,
always= sha,
solution= so.

Hence, option A is correct.

SBI PO Free Mocks (Latest Pattern)

Instructions

Read the following information carefully and answer the question which follows.

Question 38

All existing and upcoming hotels within 5km radius of national parks and sanctuaries in India will have to pay 30% of their annual turnover as tax to the government

Which of the following statements can be inferred from the facts/information given in the above statement ?

- A The tax collected from the hotels will be used for the betterment of these national parks and sanctuaries.
- B Hotels which are sponsored by the government will not have to pay any tax even if these are located within the 5 km radius of such wildlife hotspots.
- C The ecosystem of the national parks and sanctuaries is adversely affected even if the hotels are located outside the 5 km radius
- D Government allows the construction of hotels within 5 km radius of national parks and sanctuaries

E Such a step is taken by the environment ministry to boost eco-tourism and perk up revenue collection of State government.

Answer: A

Explanation:

The purpose of tax collection is to use the money so obtained for betterment and maintenance of existing facilities. Therefore, we can safely infer that the tax would be used for betterment of national park and sanctuaries. Hence, option A is correct.

Question 39

Read the following paragraph and answer the question which follows
Tenants' associations have demanded a 'vacancy tax' on all vacant and unsold flats in Mumbai.
Which of the following would support the demand made by the tenants' association ?

- A House owners too have demanded for laws that make it easier to evict tenants who default on rent payment
- B Such a tax law would be difficult to implement as it would be difficult to record the number of vacant flats in the city.
- C People with surplus money buy many houses and rent these out while many consumers cannot afford even their first house
- D The number of vacant flats in Mumbai is much lower than other metros such as Delhi and Chennai where vacancy tax already exists.
- E Such a tax would compel the house owners to sell/rent properties which in turn would control hoarding and skyrocketing property prices

Answer: E

Explanation:

Levy of vacancy tax would discourage people from hoarding property making them to sell or rent it. This would naturally cause the prices of property to fall.

Hence, option E is correct option.

Instructions

In each question below are given two/three statements followed by two conclusions numbered I and II. You have to take the given statements to be true even if they seem to be at variance with commonly known fact. Read all the conclusions and then decide which of the given conclusion logically follows from the given statement disregarding commonly known facts. Give answer.

Question 40

Statements: All rings are circles.

All square are are rings.

No ellipse is a circle.

Conclusions: I. Some rings being ellipses is a possibility.

II. At least some circles are squares.

- A if only conclusion I follows.
- B if only conclusion II follows.
- C if either conclusion I or conclusion II follows.
- D if neither conclusion I nor conclusion II follows.
- E if both conclusion I and conclusion II follows.

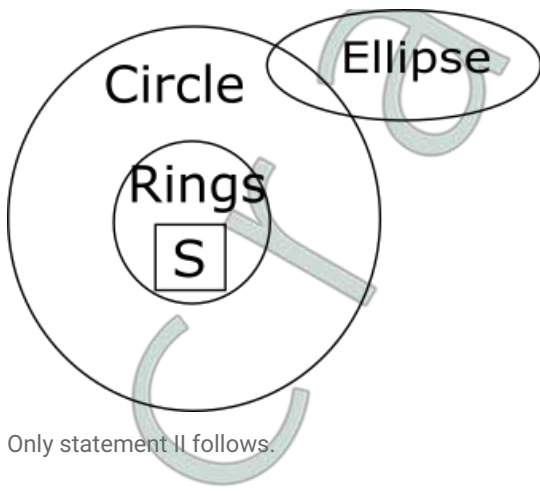
Answer: B

Explanation:

All rings are circles. Some circles are rings.

All square are are rings. Hence, some squares must be circles. Since no circle is an ellipse, no ring can be ellipse.

This can be seen from the following venn diagram.



Only statement II follows.

SBI Clerk Free Mock Test (Latest Pattern)

Question 41

Statements: No house is an apartment.

Some bungalows are apartments.

Conclusions: I.No house is a bungalow.

II.All bungalows are houses.

- A if only conclusion I follows.
- B if only conclusion II follows.
- C if either conclusion I or conclusion II follows.
- D if neither conclusion I nor conclusion II follows.
- E if both conclusion I and conclusion II follows.

Answer: D

Explanation:

No house is an apartment.

Some bungalows are apartments. We cannot establish a relationship between bungalows.

Neither of I and II follow.

Therefore, option D is correct.

Question 42

Statements:Some gases are liquids

All liquids are water.

Conclusions:I.All gases being water is a possibility.

II.All such gases which are not water can never be liquids.

- A if only conclusion I follows.
- B if only conclusion II follows.
- C if either conclusion I or conclusion II follows.
- D if neither conclusion I nor conclusion II follows.
- E if both conclusion I and conclusion II follows.

Answer: A

Explanation:

Some gases are liquids. All liquids might be gases.

All liquids are water. Hence, all liquids might be water.
Therefore, only statement I follows.
Option A is correct answer.

Question 43

Statements :

All seconds are hours.

No second is a day

Conclusions :

I. No day is an hour.

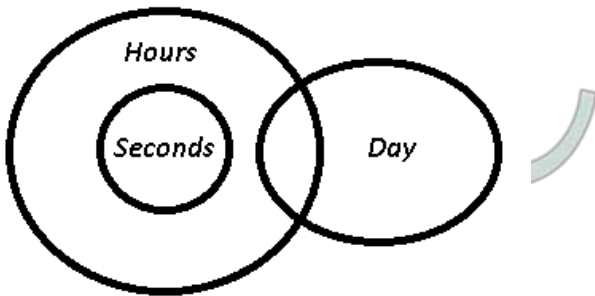
II. At least some hours are seconds

- A if only conclusion I follows.
- B if only conclusion II follows.
- C if either conclusion I or conclusion II follows.
- D if neither conclusion I nor conclusion II follows.
- E if both conclusion I and conclusion II follows.

Answer: B

Explanation:

The venn diagram for above statements is :



Conclusions :

I. No day is an hour = false

II. At least some hours are seconds = true

Thus, only conclusion II follows.

=> Ans - (B)

SBI Clerk Previous Papers (Download PDF)

Question 44

Statements:Some teachers are professors.

Some lecturers are teachers.

Conclusions:I.All teachers as well as professors being lectures is a possibility.

II.All those teachers who are lectures are also professors.

- A if only conclusion I follows.
- B if only conclusion II follows.
- C if either conclusion I or conclusion II follows.
- D if neither conclusion I nor conclusion II follows.

E if both conclusion I and conclusion II follows.

Answer: A

Explanation:

Some teachers are professors. All professors might be teachers.
Some lecturers are teachers. All teachers might be lecturers. Hence, all professors might be lecturers.
Therefore only statement I follows.
Option A is correct.

Question 45

Statements: Some teacher are professors.

Some lecturers are teachers.

Conclusions: I. No professor is a lecture.

II. All lectures being professors is a possibility.

A if only conclusion I follows.

B if only conclusion II follows.

C if either conclusion I or conclusion II follows.

D if neither conclusion I nor conclusion II follows.

E if both conclusion I and conclusion II follows.

Answer: B

Explanation:

Some teachers are professors. All professors might be teachers.
Some lecturers are teachers. All teachers might be lecturers. All lecturers might professors.
Therefore only statement II follows.
Option A is correct.

Instructions

In each of the questions given below which one of the five answer figure should come after the problem figure, if the sequence were continued ?

Question 46

Problem figures

c c c c c c c c c c c c c c c c	u u c c c c c c c c c c c c u u	o o u u c c c c c c c c u u o o	u u o o u u c c c c u u o o u u	c c u u o o u u u u o o u u c c
--	--	--	--	--

Answer figures

u u c c u u o o o o u u c c u u	c c u u o o c c c c o o u u c c	o o c c u u c c c c u u c c o o	o c u o c c u c u o c u o o c c	u u c c o o u u u u o o c c u u
--	--	--	--	--

(1)

(2)

(3)

(4)

(5)

A (1)

- B (2)
- C (3)
- D (4)
- E (5)

Answer: A

Explanation:

As we can see in the given problem figures that leftmost 2 designs of the first row and rightmost two designs of the last row are getting changed from the first figure itself.

The change in the design has a pattern where it changes from "cc" to "uu" then "uu" to "oo" and then goes back to "uu" and "cc".

Now rightmost 2 designs of the first row and leftmost 2 designs of the last row will start changing according to the above-stated pattern from the 2nd problem figure.

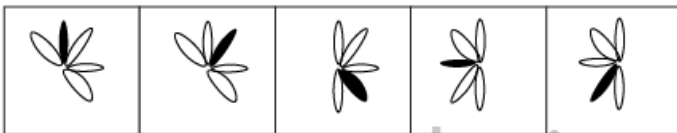
Similarly, 2nd row and 3rd-row designs will start changing from next figures according to the pattern mentioned already.

Hence, answer will be A

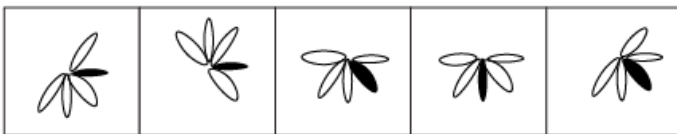
Banking Daily Free Topic Test

Question 47

Problem figures



Answer figures



- (1)
- (2)
- (3)
- (4)
- (5)

- A (1)
- B (2)
- C (3)
- D (4)
- E (5)

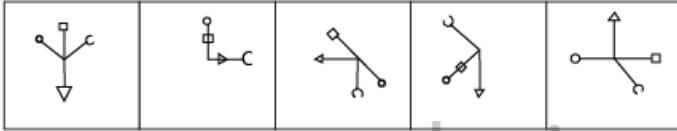
Answer: E

Explanation:

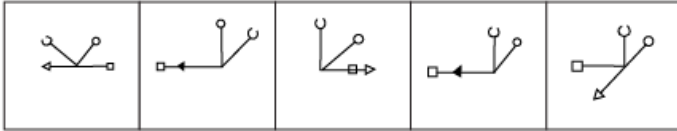
Given problem figures have a pattern for 2nd, 4th and 6th figure where design is getting rotated by 135 degrees without any changes in the darkened leaf. Hence, accordingly answer will be E

Question 48

Problem figures



Answer figures



(1) (2) (3) (4) (5)

- A (1)
- B (2)
- C (3)
- D (4)
- E (5)

Answer: D

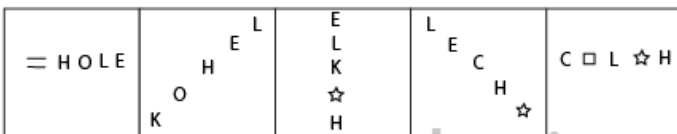
Explanation:

As we can see in the given problem figures that the individual designs with the line are getting changed according to different patterns. The line with the arrow is rotating in the anticlockwise direction as 90 degrees, 180 degrees, 90 degrees, 180 degrees and so on. The line with "u" is rotating in the clockwise direction as 45 degrees, 90 degrees, 135 degrees, 180 degrees and so on. The line with a square is rotating in the anticlockwise direction as 0 degrees, 45 degrees, 90 degrees, 135 degrees, 180 degrees and so on.

Hence, according to the patterns described above answer will be D

Question 49

Problem figures



Answer figures



(1) (2) (3) (4) (5)

- A (1)
- B (2)
- C (3)

D (4)

E (5)

Answer: B

Explanation:

As we can see in the given problem figure that the whole design is rotating in the anticlockwise direction and with every rotation a letter is getting changed with the exchange of positions of other letters.

The position of changing letter is starting from the left-most to the right side and then to the topmost. Remaining letters are exchanging their positions in the sets of two letters. Hence, answer will be B

Question 50

Problem figures

□ S	★ C	O △	B ★	▲ E
△ E	E △	B □	K E	□ S
C ★	S □	K L	C S	L O
○ B K L	L ○ B K	C ★ E S	O △ □ L	★ B K C

Answer figures

B S	O □	L ○	O L	□ B
K ○	S L	S □	S □	★ K
C ★	E △	△ E	E △	L C
E △ □ L	C ★ B K	C ★ B K	C ★ B K	△ E S ○

(1)

(2)

(3)

(4)

(5)

A (1)

B (2)

C (3)

D (4)

E (5)

Answer: D

Explanation:

In the given problem figures, designs are getting changed according to different patterns. The changes in figure 5 to 6 will happen according to figure 1 to 2.

The pattern for figure 1 to 2: Lower-most letters are shifting to right and rightmost letter is coming to the leftmost position, star and square will exchange their positions, C and S will exchange their positions and the remaining 2 letters will also exchange their positions.

The same pattern will be followed for figure 5 to 6 and hence, answer will be D

Download Highly Rated Banking APP

General Awareness

Instructions

For the following questions answer them individually

Question 51

A major Public Sector Bank raised interest rates on loans by 25 basis points was news in some major financial newspapers recently. This means the bank has raised interest by 25 basis points of

- A Saving Bank Interest Rate
- B Base Lending Rate
- C Repo Rates
- D Present Rates on Deposits
- E Discounted Rates of Interest

Answer: B

SBI PO Solved Previous Papers (Download PDF)

Question 52

The Finance Minister of India in one of his press conferences said that inflationary Pressure is likely to continue following recent increase in rates of some commodities in international markets. Which of the following commodities was he referring to as it gets frequent increase at international levels and disturbs our Home Economy substantially ?

- A Gold and Silver
- B Petroleum products
- C Tea and Coffee
- D Sugar
- E Jute and Jute products

Answer: B

Question 53

Immediately prior to change in the measure of Food Inflation Which of the following indexes was being used for measuring it ?

- A Wholesale Price Index
- B Consumer Price Index
- C Interest Rate offered by banks on deposits
- D Sensex and Nifty
- E None of these

Answer: A

Question 54

What is the full form of 'FINO' a term we see frequently in financial newspapers ?

- A Financial Investment Network and Operations
- B Farmer's Investment in National Organisation
- C Farmer's Inclusion News and Operations
- D Financial Inclusion Network and Operations
- E None of these

Answer: A

Get Free Study Material & Updates - Whatsapp "Updates" to 7661025557

Question 55

Which of the following is/are commodity/lies on which subsidy is given to farmers/poor in India ?

(A) Fertilizer (B) Kerosene (C) LPG

- A Only (A)
- B Only (B)
- C Only (C)
- D Only (A) and (C)
- E All (A) (B) (C)

Answer: E

Question 56

'Bhagam Oilfields' which were recently in news, are located in which of the following states in India ?

- A Rajasthan
- B Gujarat
- C Assam
- D Maharashtra
- E Karnataka

Answer: A

Question 57

The Finance Minister of India recently decided to review the position of 'Bad Debts' in priority sector. Which of the following is/are the reason(s) owing to which FM took this decision ?

- (A) Bad Debt in agriculture is still rising substantially every year despite special treatment to it
- (B) Bad Debt in other areas of priority sector is almost nil now.
- (c) Govt is planning to disburse another instalment of rs 1,60,000 crore, which will bring 'Bad Debts' almost at 'Nil level' and no special treatment will be needed in next fiscal year

- A Only (A)
- B Only (B)
- C Only (C)
- D Both (A) and (B)
- E All (A) (B) and (C)

Answer: A

SBI PO Free Mocks (Latest Pattern)

Question 58

Which amongst the following countries is NOT a member of the TAPI pipeline project which was in news recently ?

- A India
- B Afghanistan
- C Portugal
- D Pakistan
- E Turkmenistan

Answer: C

Question 59

An agreement on Arms Reduction Popularly known as START is one of the major issues in the way of smooth relations between which of the following two countries ?

- A India-Pakistan
- B India-China
- C China-Japan
- D USA-Russia
- E Russia-Iran

Answer: D

Question 60

The International WWW Conference -2011 was organized in which of the following places in March 2011 ?

- A London
- B Paris
- C Vienna
- D Manila
- E Hyderabad

Answer: E

SBI Clerk Free Mock Test (Latest Pattern)

Question 61

Which of the following international agencies/organizations had initiated an International Convention for the Protection of All persons from Enforced Disappearance Which came into effect recently ?

- A World Health Organisation (WHO)
- B International Court of Justice
- C International Maritime Organisation

D International Atomic Energy Agency (IAEA)

E United Nations Organisation (UNO)

Answer: E

Question 62

'BRIC' which was the organisation of 4 nations namely Brazil Russia India and China has now become BRICS which is the fifth nation included in it ?

A South Korea

B Sri Lanka

C Singapore

D Spain

E South Africa

Answer: E

Question 63

The process of acquisition of agricultural land and its compensation to farmers recently came up as a major issue in which of the following states ? (it also created law and order problem in the State)

A Haryana

B Gujarat

C Uttar Pradesh

D Rajasthan

E Punjab

Answer: C

SBI Clerk Previous Papers (Download PDF)

Question 64

What does the letter 'L' denote in the term 'LAF' as referred every now and then in relation to monetary policy of the RBI ?

A liquidity

B Liability

C Leveraged

D Longitudinal

E Linear

Answer: A

Question 65

BP Plc, which was in news recently is a major international company in the field of

- A Heavy Machinery
- B Oil exploration and processing
- C Atomic Energy
- D Information Technology
- E None of these

Answer: B

Question 66

Who amongst the following has been appointed the new coach of the Indian Cricket team for a period of two years ?

- A Stuart Law
- B Allan Border
- C Gary Kirsten
- D Duncan Fletcher
- E Allan Donald

Answer: D

Banking Daily Free Topic Test

Question 67

Why was Kanishtha Dhankhar's name in news recently ?

- A She was crowned Femina Miss India 2011
- B She was adjudged Best Actress 2010 by Film fare
- C She is the new captain of India's woman cricket team
- D She has become the new Dy Minister of Textile in place of Dayanidhi Maran
- E None of these

Answer: A

Question 68

K Balachander who was awarded prestigious Dada Saheb Phalke Award 2010 is basically a/an

- A Actor
- B Director
- C Photographer
- D Music Director
- E Choreographer

Answer: B

Question 69

Banks and other financial institutions in India are required to maintain a certain amount of liquid assets like cash precious metals and other short-term securities as a reserve all the time In Banking World this known as

- A CRR
- B Fixed Asset
- C SLR
- D PLR
- E None of these

Answer: C

Question 70

Which of the following space agencies recently launched three satellites and placed them into Polar Sun Synchronous Orbit successfully ?

- A NASA
- B ROSCOSMOS
- C cnsa
- D ISRO
- E JAXA

Answer: D

Question 71

As per the decision taken by the Govt of India recently 'Bamboo is a liberated item now' What does it really mean ?

- (A) Bamboo henceforth will be treated as a minor forest produce only
- (B) Now villagers are free to sell bamboo in their community forest areas
- (C) Gram Sabha has been given right to issue transport passes to legally transport the produce

- A Only (A)
- B Only (B)
- C Only (C)
- D All (A) (B) and (C)
- E None of these

Answer: D

Question 72

Union Cabinet recently passed a rs 7000-crore project to clean up which of the following rivers in India ?

- A Narmada
- B Ravi

- C Ganga
- D Chambal
- E Krishna

Answer: C

Download Highly Rated Banking APP

Question 73

As per estimates of the Planning Commission of India the target growth rate of 12th Five Year Plan is set at

- A 7 to 8%
- B 8.0% to 8.5%
- C 9% to 9.5%
- D 10% to 10.5%
- E 11%

Answer: C

Question 74

Goodluck Jonathan was recently re-elected the President of

- A South Africa
- B Nigeria
- C Kosovo
- D Haiti
- E None of these

Answer: B

Question 75

Which of the following schemes has not been launched by the Ministry of Rural Development, Govt of India ?

- A National Old Age Pension Scheme
- B National Maternity Benefit Scheme
- C National Family Benefit Scheme
- D Mid-Day Meal Scheme
- E All are launched by Ministry of Rural Development

Answer: D

SBI PO Solved Previous Papers (Download PDF)

Question 76

Where are you likely to find an embedded operating system ?

- A on a desktop operating system
- B on a networked PC
- C on a network server
- D on a PDA
- E on a mainframe

Answer: D

Question 77

An online discussion group that allows direct 'live' communication is known as

- A Webcrawler
- B chat group
- C regional service provider
- D hyperlink
- E e-mail

Answer: B

Question 78

Which of the following is a program that uses a variety of different approaches to identify and eliminate spam ?

- A Directory search
- B Anti-spam program
- C Web server
- D Web storefront creation package
- E Virus

Answer: B

Get Free Study Material & Updates - Whatsapp "Updates" to 7661025557

Question 79

Connection or link to other documents or web pages that contain related information is called

- A dial-up
- B electronic commerce
- C hyperlink
- D e-cash

E domain name

Answer: C

Question 80

Which of the following is a programming language for creating special programs like applets ?

A java

B cable

C domain name

D Net

E COBOL

Answer: A

Question 81

The system unit

A coordinates input and output

B is the container that houses electronic components

C is a combination of hardware and software

D controls and manipulates data

E does the arithmetic operations

Answer: C

SBI PO Free Mocks (Latest Pattern)

Question 82

System software

A allows the user to diagnose and troubleshoot the device

B is a programming language

C is part of a productivity suite

D is an optional form of software

E helps the computer manage internal resources

Answer: E

Question 83

Computer and communication technology such as communication links to the Internet that provide help and understanding to the end user is known as

A Presentation file

- B information technology
- C program
- D worksheet file
- E FTP

Answer: A

Question 84

Which of the following is contained on chips connected to the system board and is a holding area for data instructions and information (processed data waiting to be output to secondary storage)

- A program
- B mouse
- C Internet
- D memory
- E modem

Answer: D

SBI Clerk Free Mock Test (Latest Pattern)

Question 85

Microsoft's Messenger allows users to

- A bypass a browser to surf the web
- B create a blog
- C communicate via direct live communication
- D identify and eliminate spam
- E make graphic presentations

Answer: C

Question 86

Portable computer also known as laptop computer, weighing between 4 and 10 pounds is called

- A general-purpose application
- B Internet
- C Scanner
- D printer
- E notebook

Answer: E

Question 87

The main circuit-board of the system unit is the

- A computer program
- B control unit
- C mother board
- D RAM
- E None of these

Answer: C

SBI Clerk Previous Papers (Download PDF)

Question 88

Which of the following is billionth of a second ?

- A Gigabyte
- B terabyte
- C Nanosecond
- D Microsecond
- E Terasecond

Answer: C

Question 89

Online Marketing is the function of which of the following ?

- A Purchase Section
- B Production Department
- C IT Department
- D Designs Section
- E A collective function of all staff

Answer: E

Question 90

Customisation is useful for

- A Designing customer specific products
- B Call centres
- C Publicity
- D Motivating the staff

E Cold calls

Answer: A

Banking Daily Free Topic Test

Question 91

The key challenge to market-driven strategy is

- A Selling maximum products
- B Employing maximum DSAs
- C Delivering superior value to customers
- D Being rigid to changes
- E Adopting short-term vision

Answer: C

Question 92

Effective selling skills depends on

- A Size of the sales team
- B Age of the sales team
- C Peer strength
- D Knowledge level of the sales team
- E Educational level of the sales team

Answer: C

Question 93

Generation of sales leads can be improved by

- A Being very talkative
- B Increasing personal and professional contacts
- C Being passive
- D Engaging Recovery Agents
- E Product designs

Answer: B

Question 94

A Market plan is

- A Performance Appraisal of marketing staff

- B Company prospectus
- C Documented marketing strategies
- D Business targets
- E Call centre

Answer: C

Question 95

Marketing channels mean

- A Delivery objects
- B sales targets
- C Delivery outlets
- D Delivery boys
- E Sales teams

Answer: C

Question 96

Social Marketing means

- A Share market prices
- B Marketing by the entire society
- C Internet Marketing
- D Marketing for a social cause
- E Society bye-laws

Answer: D

Download Highly Rated Banking APP

Question 97

Service Marketing is the same as

- A Internet Marketing
- B Telemarketing
- C Internal Marketing
- D Relationship Marketing
- E Transaction Marketing

Answer: D

Question 98

Market-driven strategies include

- A Identifying problems
- B Planning marketing tactics of peers
- C Positioning the organisation and its brands in the marketplace
- D Internal Marketing
- E Selling old products

Answer: A

Question 99

Innovation in marketing is same as

- A Motivation
- B perspiration
- C Aspiration
- D Creativity
- E Team work

Answer: D

SBI PO Solved Previous Papers (Download PDF)

Question 100

Personal Loans can be canvassed among

- A Salaried persons
- B Pensioners
- C Foreign Nationals
- D NRI customers
- E Non-customers

Answer: A

Get Free Study Material & Updates - Whatsapp "Updates" to 7661025557

Quant

Instructions

What will come in place of question mark (?) in the following questions:

Question 101

$32 \cdot 05\%$ of $259.99=?$

- A 92
- B 88
- C 78
- D 90
- E 83

Answer: E

Explanation:

The problem can be solved quickly by rounding off,

32.05% ~32 and 259.99~ 260

Now, 32% of 260 = 83.2

SBI PO Free Mocks (Latest Pattern)

Question 102

$\frac{1}{8}$ of $\frac{2}{3}$ of $\frac{3}{5}$ of 1715=?

- A 80
- B 85
- C 90
- D 95
- E 75

Answer: B

Explanation:

Now, $\frac{1}{8}$ of $\frac{2}{3}$ = $(1/8)*(2/3)=1/12$

Also, $(\frac{1}{8}$ of $\frac{2}{3})$ of $\frac{3}{5}$ = $(1/12) * (3/5) = 1/20$

Now, $(1/20)$ of 1715= $(1/20)*1715 = 85$

Question 103

$25 \cdot 05 \times 123 \cdot 95 + 388 \cdot 999 \times 15 \cdot 001 = ?$

- A 900
- B 8950
- C 8935
- D 8975
- E 8995

Answer: C

Explanation:

Here we are approximating 25.05~25, 123.95~124, 388.99~389, 15.001~15.

The question can be rewritten as,

$$25 \times 123 + 388 \times 15 = 8935$$

Hence the correct option is 8935.

Question 104

$$561 \div 35 \cdot 05 \times 19 \cdot 99 = ?$$

- A 320
- B 330
- C 315
- D 325
- E 335

Answer: A

Explanation:

By approximating 561~560, 19.99~20 and 35.05~35 for easier calculation,

the question can be written as,

$$560 \times (20/35) = 320$$

SBI Clerk Free Mock Test (Latest Pattern)

Question 105

$$(15 \cdot 01)^2 \times \sqrt{730} = ?$$

- A 6125
- B 6225
- C 6200
- D 6075
- E 6250

Answer: D

Explanation:

The question can be reframed as,

$$15^2 \times \sqrt{729} = 225 \times 27 = 6075$$

Instructions

In each of these question a number series is given. In each series only one number is wrong. Find out the wrong numbers

Question 106

3601, 3602, 1803, 604, 154, 36, 12

- A 3602
- B 1803

C 604

D 154

E 36

Answer: D

Explanation:

In the given series, nth term is obtained by - (Previous term/(n-1)) +(n-1).

Hence the 5th term should be $(604/4)+4 = 155$.

However 5th term is given as 154.

Hence, 154 is wrong term in the given series.

Question 107

4, 12, 42, 196, 1005, 6066, 42511

A 12

B 42

C 1005

D 196

E 6066

Answer: B

Explanation:

In this question, the nth term is obtained by (previous term*n + n²).

Hence, after 12, the number would be $(12*3+9)= 45$

Therefore, the correct option is 45.

SBI Clerk Previous Papers (Download PDF)

Question 108

2, 8, 12, 20, 30, 42, 56

A 8

B 42

C 30

D 20

E 12

Answer: A

Explanation:

Here the consecutive difference between the terms is incremented by 2 for the series.

Hence, after 2, the number should be 6.

Question 109

32, 16, 24, 65, 210, 945, 5197.5

- A 945
- B 16
- C 24
- D 210
- E 65

Answer: E

Explanation:

Here the successive numbers are multiplied by .5,1.5.2.5....

Hence, in place of 65 the number should be $24 \times 2.5 = 60$.

Therefore, the incorrect number for series is 65.

Question 110

7, 13, 25, 49, 97, 194, 385

- A 13
- B 49
- C 97
- D 194
- E 25

Answer: D

Explanation:

Here, in this series, the nth term is (previous term + $6 \times 2^{n-2}$)

Hence, in place of 194 the term should be $(97 + 6 \times 2^4) = 193$

Banking Daily Free Topic Test

Instructions

For the following questions answer them individually

Question 111

Mr X invested a certain amount in Debt and equity Funds in the ratio of 4:5. At the end of one year he earned a total dividend of 30% on his investment. After one year he reinvested the amount including the dividend in the ratio of 6:7 in Debt and Equity Funds. If the amount reinvested in Equity Funds was rs 94,500, what was the original amount invested in Equity Funds ?

- A rs 75,000
- B rs 81,000
- C rs 60,000

D rs 65,000

E None of these

Answer: E

Explanation:

Let the original amount invested be x .

Hence, the amount with him after receiving the dividend is $1.3x$.

Now, this amount was reinvested in ratio 6:7 in debt and equity funds. Amount invested in equity fund was 94,500

Hence, $(0.7x/1.3)=94,500$, $x=175500$

now, the original amount invested in equity was $(5/9)*175500=97,500$

Question 112

The age of the father is 30 years more than the son's age. Ten years hence the father's age will become three times the son's age that time. What is the son's present age in years?

A Eight

B Seven

C Five

D Cannot be determined

E None of these

Answer: C

Explanation:

Let the son age be x and fathers age be y .

The solution is obtained by solving two simultaneous equations as per given conditions,

$x=y+10$ and $x+10=3(y+10)$

Hence, $y = 5$

Question 113

If the length of a rectangular field is increased by 20% and the breadth is reduced by 20% the area of the rectangle will be $192m^2$. What is the area of the original rectangle ?

A $184m^2$

B $196m^2$

C $204m^2$

D $225m^2$

E None of these

Answer: E

Explanation:

Let the length be L and breadth be B . The new length and breadth is $1.2L$ and $0.8B$.

Hence, area = $1.2L*0.8B=192$

Now $L*B=200$, but original area = $L*B= 200$

Question 114

The product of one-third of a number and 150% of another number is what per cent of the product of the original numbers ?

- A 80%
- B 50%
- C 75%
- D 120%
- E None of these

Answer: B

Explanation:

Let the number be x and another number be y .

Now, the product of number and another number = $x*y$

As per given condition, new product $(x/3)*1.5y=0.5xy$

Now, per cent of the product of the original numbers = $(0.5xy/xy)*100=50$

Question 115

Inside a square plot, a circular garden is developed which exactly fits in the square plot and the diameter of the garden is equal to the side of the square plot which is 28 meters. What is the area of the space left out in the square plot after developing the garden ?

- A $98m^2$
- B $146m^2$
- C $84m^2$
- D $168m^2$
- E None of these

Answer: D

Explanation:

Here, diameter of plot = 28m, radius = 14m.

Area of circular plot = $(22/7)*14*14=22*28$

Area of square plot = $28*28$

Difference of areas = $28*28-22*28=168$

Question 116

Amit and Sujit together can complete an assignment of data entry in five days. Sujit's speed 80% of Amit's speed and the total key depressions in the assignment are 5,76,000. What is Amit's speed in key depressions per hour if they work for 8 hours a day ?

- A 4800
- B 6400
- C 8000
- D 7200
- E None of these

Answer: C

Explanation:

Let, amit's speed be x and sujit's speed be y. $y = .8x$

They work for total $8 \times 5 = 40$ hours

$$x + y = (576000) / 40$$

$$1.8x = 14400$$

$$x = 8000$$

Amit speed is 8000 depressions/hr

Download Highly Rated Banking APP

Question 117

Out of five girls and three boys, four children are to be randomly selected for a quiz contest. What is the probability that all the selected children are girls ?

A $\frac{1}{14}$

B $\frac{1}{7}$

C $\frac{5}{17}$

D $\frac{2}{17}$

E None of these

Answer: A

Explanation:

The girls can be chosen in 5C_4 ways.

The total candidates can be chosen in 8C_4 ways.

Hence,

$$\text{Probability} = \frac{{}^5C_4}{{}^8C_4} = \frac{1}{14}$$

Correct option is option A

Question 118

Profit earned by organisation is distributed among officers and clerks in the ratio of 5:3. If the number of officers is 45 and the number of clerks is 80 and the amount received by each officer is Rs. 25,000, what was the total amount of profit earned ?

A Rs. 22 lakh

B Rs. 18.25 lakh

C Rs. 18 lakh

D Rs. 23.25 lakh

E None of these

Answer: C

Explanation:

The total amount distributed among officers = $45 \times 25000 = 11,25,000$

If the total amount is x, then this amount is $(\frac{5}{8})x = 11,25,000$

Hence, $x = 18,00,000$

Question 119

A shopkeeper labelled the price of the articles so as to earn a profit of 30% on the cost price. He then sold the articles by offering a discount of 10% on the labelled price. What is the actual per cent profit earned in the deal ?

- A 18%
- B 15%
- C 20%
- D Cannot be determined
- E None of these

Answer: E

Explanation:

Let the cost price be x .

As per given condition, the labelled price will be $1.3x$.

Discounted price will be $0.9 \times 1.3x = 1.17x$

Now, Profit = Price at which item was sold - Cost Price = $1.17x - x = .17x = 17\%$ of Cost price.

Hence, profit is 17%.

SBI PO Solved Previous Papers (Download PDF)

Question 120

Mr Shamin's salary increase every year by 10% in June. If there is no other increase or reduction in the salary and his salary in June 2011 was rs 22,385, what was his salary in June 2009 ?

- A rs 18,650
- B rs 18,000
- C rs 19,250
- D rs 18,500
- E None of these

Answer: D

Explanation:

Here, the salary is compounded every year.

Let salary be x .

$$22385 = x(1+.1)^2$$

$$x = 18,500$$

Instructions

In each of these question one question is given followed by data in three statements I,II and III. You have to study the question and the data in statements and decide the question can be answered with data in which of the statements and mark your answer accordingly.

Question 121

What is the rate of interest $pcpa$?

Statements:

I. The difference between the compound interest and simple interest earned in two years on the amount invested is rs 100.

II. The amount becomes rs 19,500 in three years on simple interest.

III. The simple interest accrued in two years on the same amount at the same rate of interest is 3,000.

- A Only I and II
- B Only I and III

- C Only II and III
- D Only I and either II or III
- E None of these

Answer: C

Explanation:

Here, we don't know principal and rate of interest. They form the two unknown variables.

Let Principal be P and Number of years be N.

II and III condition give two equations in terms of P and N.

I doesn't help with it's data and hence, it is redundant.

Correct option is Option C

Question 122

What is the speed of the train in kmph ?

Statements:

- I. The train crosses an 'X' meter-long platform in 'n' seconds.
- II. The length of the train is 'y' metres.
- III. The train crosses a signal pole in 'm' seconds

- A Any two of the three
- B Only II and III
- C Only I and III
- D All I,II and III
- E Cannot be answered even with information in all three statements

Answer: E

Explanation:

Here, there are four unknown variables namely length of platform (X), time required to cross the platform (n), length of train (y) and time required to cross signal pole (m).

With given information we can only form 3 equations

The number of variables (4) is more than the equations (3) that can formed.

Hence, we can say that the data is insufficient for calculation.

Therefore, E is the correct option.

Get Free Study Material & Updates - Whatsapp "Updates" to 766102557

Question 123

How many students passed in first class ?

Statements:

- I. 85% of the students who appeared in examination have passed either in first class or in second class or in pass class
- II. 750 students have passed in second class
- III. The number students who passed in pass class is 28% of those passed in second class

- A All I, II and III
- B Only I and III

- C Only II and III
- D Cannot be answered even with information in all three statements.
- E None of these

Answer: D

Explanation:

Let the number of students be x .

Let number of students in first class, second class, pass class be A , B and C respectively.

Now with given information,

I gives $A+B+C=0.85x$

II gives $B=750$

III gives $C=0.28B$

From I, II and III we can find B and C but A can't still be found as x is unknown.

Here data is insufficient.

Hence, the correct option is option D.

Question 124

What is the amount invested in scheme 'B' ?

Statement:

- I. The amounts invested in scheme 'A' and 'B' are in the ratio of 2:3
- II. The amount invested in scheme 'A' is 40% of the total amount invested
- III. The amount invested in scheme 'A' is rs 45,000

- A Only I and II
- B Only I and III
- C Only II and III
- D All I II and III
- E Only III and either I or II

Answer: B

Explanation:

Here, let amount invested in A and B be x and y respectively.

Now, from I, $(x/y)=(2/3)$

and from II, $x=45000$

Therefore, $y= 67500$

We get the amount invested in B from I and III

From II we cannot get the relation between A and B as there can be more schemes other than A and B.

Hence, the correct option is option B

Question 125

What is the cost of flooring a rectangular hall?

Statements:

- I. The length of the rectangle is 6 metres.
- II. The breadth of the rectangle is two-third of its length.
- III. The cost of flooring the area of 100 cm^2 is rs 45

- A Only I and III
- B Only II and III
- C All I,II and III
- D Cannot be answered even with data in all three statements.
- E None of these

Answer: C

Explanation:

Let Length be L and Breadth be B.

Now, from I, $L=6m$

from II, $B=(2/3)L= 4m$

$Area=L*B=240000cm^2 = 240000*.45=10800$

Hence, data from I, II and III helps us to give the answer.

Correct option is C

SBI PO Free Mocks (Latest Pattern)

Instructions

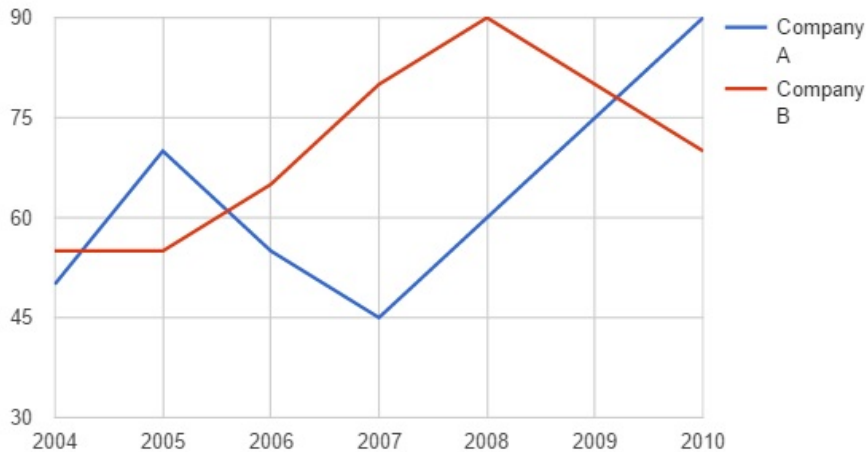
Study the following graph carefully to answer these question .

per cent profit earned by two companies producing electronic goods over the years

$$\% \text{ profit} = \frac{\text{profit Earned}}{\text{Total Investment}} \times 100$$

profit Earned=Total Income-Total Investment in the year

Company A and Company B



Question 126

If the profit earned in 2006 by Company B was rs 8,12,500 what was the total income of the company in that year ?

- A rs 12,50,000

- B rs 20,62,500
- C rs 16,50,500
- D 18,25,000
- E None of these

Answer: B

Explanation:

The profit percent for 2006 of company B is 65%

Hence the Total investment = $812500 / 0.65 = 12,50,000$

Total income = 20,62,500

Question 127

If the amount invested by the two companies in 2005 was equal what was the ratio of total income of the Company A to that of B in 2005 ?

- A 31:33
- B 33:31
- C 34:31
- D 14:11
- E None of these

Answer: C

Explanation:

Let amount invested be x.

Total income of A = 1.70x

Total income of B = 1.55x

Ratio = $1.7 / 1.55 = 34 / 31$

Question 128

If the total amount invested by the two companies in 2009 was rs 27 lakh while the amount invested by company B was 50% of the amount invested by company A what was the total profit earned by the two companies together ?

- A rs 21.15 lakh
- B rs 20.70 lakh
- C rs 18.70 lakh
- D rs 20.15 lakh
- E None of these

Answer: B

Explanation:

From given information if A & B is amount invested by the companies, then $A = 2B$

Hence, $A = 18$, $B = 9$.

Profit of A = 75% of 18 lakhs = 13.5 lakhs

Profit of B = 80% of 9 lakhs = 7.2 lakhs

Total profit earned = 20.7 lakhs

SBI Clerk Free Mock Test (Latest Pattern)

Question 129

If the income of company A in 2007 and that in 2008 were equal and the amount invested in 2007 was rs 12 lakh what was the amount invested in 2008 ?

- A rs 10,87,500
- B rs 10,85,700
- C rs 12,45,000
- D rs 12,85,000
- E None of these

Answer: A

Explanation:

Let the income be x.

Total income in 2007 = $12 \text{ lacs} + .45 \times 12 \text{ lacs} = 17.4 \text{ lacs}$

Now income in 2008 = $x + 0.6x = 1.6x = 17.4 \text{ lacs}$

$x = 10.875 \text{ lacs} = 10,87,500$

Question 130

If the amount of profit earned by company A in 2006 was rs 10.15 lakh what was the total investment ?

- A rs 13.8 lakh
- B rs 14.9 lakh
- C rs 15.4 lakh
- D rs 14.2 lakh
- E None of these

Answer: E

Explanation:

if x is the total investment then,

55% of x,

$.55x = 10.15$

$x = 18.45$

Hence, the option is none of these.

Question 131

If the amount invested by company B in 2004 is rs 12 lakh and the income of 2004 is equal to the investment in 2005, what is the amount of profit earned in 2005 by company B ?

- A rs 6.6 lakh
- B rs 18.6 lakh
- C rs 10.23 lakh

D rs 9.6 lakh

E None of these

Answer: C

Explanation:

Income in 2004 = $12 + .55 \times 12 = 18.6$ lakhs

Investment in 2005 = 18.6

Profit earned in 2005 = $18.6 \times 0.55 = 10.23$ lakhs

SBI Clerk Previous Papers (Download PDF)

Question 132

If the investments of company A in 2007 and 2008 were equal what is the difference between the profits earned in the two years if the income in 2008 was rs 24 lakh ?

A rs 2.25 lakh

B rs 3.6 lakh

C rs 1.8 lakh

D rs 2.6 lakh

E None of these

Answer: A

Explanation:

Investment in 2008 = $1.6x = 24$ lakhs, $x = 15$ lakhs

Profit in 2007 = $0.45 \times 15 = 6.75$ lakhs

Difference in profit = $9 - 6.75 = 2.25$ lakhs

Question 133

If each of the companies A and B invested rs 25 lakh in 2010 what was the average profit earned by the two companies ?

A rs 18 lakh

B rs 22.5 lakh

C rs 17.5 lakh

D rs 20 lakh

E None of these

Answer: D

Explanation:

Profit earned by company A = $.7 \times 25 = 17.5$ Lakhs

Similarly, profit of company B = 22.5 Lakhs

Average profit = 20 Lakhs

Instructions

Study the following table carefully and answer the question which follows

Number of candidates found Eligible and the

Number of candidates short listed for Interview for a recent Recruitment process for six posts from different states

Post	I		II		III		IV		V		VI	
State	E	S	E	S	E	S	E	S	E	S	E	S
A	2500	65	7200	240	5200	76	3600	200	4600	110	5400	380
B	3200	220	8500	420	8400	190	6200	320	5800	180	6200	430
C	2800	280	4500	350	7600	160	8200	440	7300	310	3700	250
D	2400	85	4800	200	2600	55	7500	350	3900	160	4800	360
E	3000	120	5600	280	3800	75	6800	280	6100	260	7800	520
F	4800	325	6400	320	4400	220	4700	180	4900	220	8800	640
G	6500	550	7000	140	6000	325	5500	220	8100	410	2700	200

Question 134

From state B which post had the highest percentage of candidates short listed ?

- A V
- B IV
- C VI
- D II
- E None of these

Answer: C

Explanation:

For state B, percent of people shortlisted candidates for post I = $220/3220 * 100 = 6.43\%$

percent of people shortlisted candidates for post II = $420/8500 * 100 = 4.9\%$

percent of people shortlisted candidates for post III = $190/8400 * 100 = 2.26\%$

percent of people shortlisted candidates for post IV = $320/6200 * 100 = 5.16\%$

percent of people shortlisted candidates for post V = $180/5800 * 100 = 3.1\%$

percent of people shortlisted candidates for post VI = $430/6200 * 100 = 6.94\%$

For post VI percent is highest among all the posts.

Banking Daily Free Topic Test

Question 135

What is the average number of candidates (approximately) found eligible for post III from all states ?

- A 6700
- B 6200
- C 4200
- D 4500
- E 5400

Answer: E

Explanation:

Average = (Total number of eligible candidates from all the states)/ number of states

$$= (5200+8400+7600+2600+3800+4400+6000)/7 = 38000/7$$

$$\approx 5428$$

Question 136

What is the overall percentage (rounded off to one digit after decimal) of candidates short listed over the total number of candidates eligible for post I from all the states together ?

- A 9.5%
- B 12.5%
- C 7.2%
- D 6.5%
- E None of these

Answer: D

Explanation:

Overall Percentage= (Number of candidates shortlisted for post I from all the states)/(Number of candidates eligible for post I from all the states)

$$\begin{aligned} &= \frac{65+220+280+85+120+325+550}{2500+3200+2800+2400+3000+4800+6500} \times 100 \\ &= 6.5\% \end{aligned}$$

Question 137

What is the ratio of the total number of candidates short listed for all the posts together from state E to that from state G ?

- A 307:369
- B 73:79
- C 6:5
- D 9:7
- E None of these

Answer: A

Explanation:

ratio =(Total number of candidates shortlisted from state E)/(Total number of candidates shortlisted from state G)

$$\begin{aligned} &= \frac{120+280+75+280+260+520}{550+140+325+220+410+200} \\ &= 307/369 \end{aligned}$$

Question 138

The total number of candidates found eligible for post I from all states together is approximately what per cent of the total of candidates found eligible for post VI from all states together ?

- A 45%
- B 50%
- C 60%
- D 55%

E 65%

Answer: E

Explanation:

Percent of candidates eligible from I to VI = (Total no. of candidates found eligible for post I from all states) / (Total no. of candidates found eligible for post I from all states)

$$\begin{aligned} &= \frac{2500+3200+2800+2400+3000+4800+6500}{5400+6200+3700+4800+7800+8800+2700} \times 100 \\ &= 65\% \end{aligned}$$

Question 139

Which state had the lowest percentage of candidates short listed with respect to candidate eligible for post IV ?

- A G
- B F
- C E
- D C
- E None of these

Answer: C

Explanation:

Amongst all the eligible candidates, for the post IV E has 280 of 5880 candidates.

E has only 4.1%.

Hence, the correct option is option C

Question 140

What is the ratio of the total number of candidates short listed for post V to that for post VI from all states together ?

- A 6:7
- B 55:96
- C 165:278
- D 16:25
- E None of these

Answer: C

Explanation:

$$\text{ratio} = \frac{4600+5800+7300+3900+6100+4900+8100}{5400+6200+3700+4800+7800+8800+2700} = 165/278$$

Download Highly Rated Banking APP

Instructions

These question are based on the following data. Study it carefully and answer the question that follow.

In a school having 400 students boys and girls are in the ratio of 3:5 The students speak Hindi, English or both the languages 12% of the boys speak only Hindi. 22% of the girls speak only English 24% of the total students speak only Hindi and the number of boys speaking both the languages is six times the number of boys speaking only Hindi

Question 141

How many boys speak Hindi ?

- A 18
- B 126
- C 108
- D 26
- E None of these

Answer: B

Explanation:

The no. of boys speaking only hindi = 12% of $\frac{3}{8}$ of $400 = 18$
The no. of boys speaking both Hindi and English = $6 \times 18 = 108$
The total no. of boys speaking Hindi = 126

Question 142

How many girls speak only Hindi ?

- A 55
- B 117
- C 96
- D 78
- E None of these

Answer: D

Explanation:

24% speak only Hindi i.e 96 speak Hindi.
 12% of 150 boy i.e 18 boys speak only Hindi
Of these 18 boys speak only Hindi and hence remaining 76 are girls speaking only hindi

Question 143

How many students speak English ?

- A 304
- B 79
- C 225
- D 117
- E None of these

Answer: A

Explanation:

24% speak only Hindi.
Hence remaining 76% must speak English or English and Hindi both.
Total number of students = 400
 76% of $400 = 304$
Hence, option A is correct.

SBI PO Solved Previous Papers (Download PDF)

Question 144

The number of girls speaking only Hindi is what percent of the total number of students speaking only Hindi ?

- A 38.2%
- B 71.8%
- C 31.2%
- D 78%
- E None of these

Answer: E

Explanation:

Total number of students who speak only Hindi = 24% of 400 = 96

Number of boys who speak only Hindi = 12% of 150 = 18

Number of girls who speak only Hindi = 78

The percent of girls speaking only Hindi of the total number of students speaking only Hindi = $\frac{78}{96} \times 100 = 81.25$

Question 145

What is the ratio of the number of boys to the number of girls speaking both the languages ?

- A 23:25
- B 12:25
- C 12:13
- D 25:13
- E None of these

Answer: C

Explanation:

Number of girls speaking both the language = (400 - no. of boys speaking both language) - No. of girls speaking only english - No. of girls speaking only hindi = 400 - 108 - 44 - 96 = 117

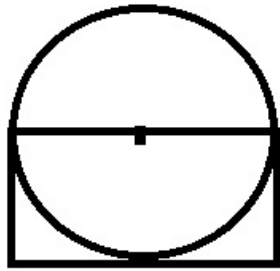
The ratio = 108/117

Instructions

For the following questions answer them individually

Question 146

The area of the circle is 616cm^2 . What is the area of the rectangle ? (. or 'dot' or indicates centre of the circle.)



- A 784cm^2
- B 196cm^2
- C 392cm^2
- D Cannot be determined
- E None of these

Answer: C

Explanation:

Let the length be L and breadth be B.
Now Diameter of circle is equal to the Length.
And it's radius is equal to breadth.

Here, radius of circle is = 14

Hence, Length = 28

Breadth = 14

Area = $28 \times 14 = 392$

Get Free Study Material & Updates - Whatsapp "Updates" to 7661025557

Instructions

Study the information given in each of these question and then answer the question

Question 147

Population in million

City Total population Male Population

A	12	6.5
B	15	7.2
C	17	9.0
D	19	9.9
E	22	10.8

What is the average female population in million ?

- A 8.32

- B 8.86
- C 8.68
- D 9.12
- E None of these

Answer: A

Explanation:

Female Population = Total Population - Male Population

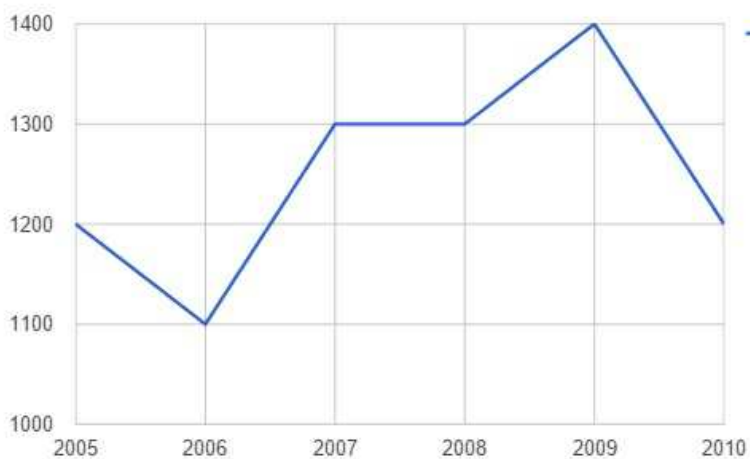
Now, Average =(Total number of females)/number of cities

$$= \frac{6.5+7.8+6.0+6.0+9.1+11.2}{5}$$

$$= 8.32$$

Question 148

What is the per cent rise in production in 2007 from 2006 ?(round off to two digits after decimal.)
graph



- A 28.18%
- B 18.18%
- C 16.28%
- D 26.18%
- E None of these

Answer: B

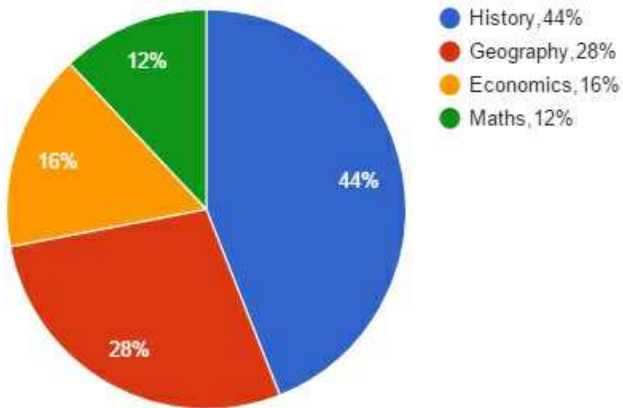
Explanation:

The increase in production = $\frac{1300-1100}{1100} \times 100$

$$= 18.18\%$$

Question 149

Out of a total 550 students how many students did not prefer Maths or Economics ?
Break-up of students having preference for each subject



- A 462
- B 154
- C 196
- D 396
- E None of these

Answer: D

Explanation:

No. of students not preferring Maths or Economics = No. of students preferring History or Geography
= (Percent of students preferring history + Percent of students preferring history)% of 550
= 72% of 550 = 396

SBI PO Free Mocks (Latest Pattern)

Question 150

Person salary (in rs lakh)

- A 8.5
- B 7.6
- C 12.8
- D 5.4
- E 10.5

What is the difference (in rs lakh) between the average salary and the lowest salary ?

- A 4.2
- B 2.65
- C 3.65

D 4.06

E None of these

Answer: E

Explanation:

Average = $(8.5+7.6+12.8+5.4+10.5)/5 = 8.96$

Difference between the lowest and average = $8.96-5.5 = 3.46$

SBI Clerk Free Mock Test (Latest Pattern)

English

Instructions

Read the following passage carefully and answer the questions given below it. Certain words/phrases have been printed in bold to help you locate them while answering some of the questions

Jagir Singh has sold red onions at a market in south Delhi every day for the past half-century. Perched on an upturned crate wrapped **tight** against the chill air he offers pyaz a staple for much Indian cooking, for 60 rs a kilo the most he can remember. Business is brisk but most customers pick up only a small handful of onions. That is just as well Wholesale supplies are tight he says and the quality is poor.

As India's economy grows by some 9% a year food prices are soaring In late December the commerce ministry judged that food inflation had reached 18.3% with pricey vegetables mostly to blame. Officials have made some attempts to **temper** the rise in the past month scrapping import taxes for onions banning their export and ordering low-priced sales at government-run shops. But there is no quick fix

Heavy rain in the west of India brought a rotten harvest Vegetables from farther afield-including a politically sensitive delivery from a neighbouring country are costly to move on India crowded pot-holed roads. Few refrigerated lorries and poor logistics mean that much of each harvested is wasted Newspapers allege hoarders are **cashing in**

The biggest problem are structural Food producers hampered by land restrictions **archaic** retail networks and bad infrastructure fail to meet extra demand from consumers It was estimated in October that a 39% rise in income per person in the previous five years might have created an extra 220 million regular consumer of milk eggs meat and fish Supplies have not kept up with this potential demand The broader inflation rate may be a less eye watering problem than the onions suggest The central bank has lifted interest rates steadily in the past year and is expected to do so again later this month Headline inflation fell to 7.5% in November down by just over a percentage points from October though it is still above the central bank's forecast of 5.5% for March.

Question 151

What is responsible for the increased demand of certain food items amongst consumers ?

- A There has been an increase in the wholesale supplies of this food stuff
- B The vegetables in the market are very highly priced
- C There has been an increased in the incomes of the people
- D There is a lack of availability of vegetables in the market
- E There has been a surge in population.

Answer: C

Explanation:

In the fourth paragraph of the passage, author clearly outlines that there has been 39% rise in income per person in the previous 5 years. This has been responsible for the increased demand of certain food items amongst consumers. Hence, the correct option is option C.

SBI Clerk Previous Papers (Download PDF)

Question 152

Which of the following is not true in the context of the passage ?

- A The overall inflation is not a bad as the food inflation in India
- B Help from other countries to counter food inflation has proved to be quite encouraging
- C Government is banning the export of certain types of vegetables in order to check food inflation
- D Highly priced vegetables are mostly responsible for the increased food inflation
- E All the above statements are true

Answer: B

Explanation:

The help from other countries is a politically sensitive issue along with issue of logistics and transport and hence, it has been difficult to get their help to counter food inflation. Hence, option B is correct answer.

Question 153

Which of the following is\are the reason for increase in food/vegetable prices ?

- (A)Bad weather
- (B)Land restrictions
- (C)Poor infrastructure for storage and transportation

- A Only (B)
- B Only (A) and (C)
- C Only (A) and (B)
- D Only (B) and (C)
- E All (A),(B)and (C)

Answer: E

Explanation:

As outlined in paragraphs 2, 3 and 4, we see that bad weather, land restrictions and poor infrastructure for storage and transportation are all responsible for increase in food/vegetable prices.

Question 154

Which of the following is\are TRUE in the context of the passage ?

- (A)Interest rates are being raised in India
- (B)India is witnessing a steady economic growth
- (C)It has been proven that the food inflation is mainly because of hoarding

- A All (A),(B) and (C)
- B Only (A) and (B)
- C Only (C)
- D Only (B) and (C)
- E None is true

Answer: B

Explanation:

The passage talks about the rising food inflation and various reasons responsible for it. Also, the rising interest rates are also mentioned.

Hence, the correct option is B.

Banking Daily Free Topic Test

Question 155

Which of the following is possibly the most appropriate title for the passage ?

- A Food Inflation In India
- B Onions and Vendors
- C Food Deficit Worldwide
- D Food Imports in India
- E Benefits To Indian Consumers

Answer: A

Explanation:

The passage talks about the food inflation in India and gives various aspects of it. Out of all the options, 'Food inflation in India' is most appropriate title.

Hence, the correct option is option is A.

Question 156

What can be said about the sale of onions at present as given in the passage ?

- A Vegetable vendors are unwilling to sell onions
- B People are not buying as much as they used
- C The sale of the onions has picked up and is unprecedented
- D People are buying more onions than they used to
- E None of these

Answer: B

Explanation:

At the start of the passage, in the first paragraph, author mentions that people are not buying as much onion as they used to. This is inspite of the fact that sale is brisk.

Hence, the correct option is B.

Question 157

The usage of the phrase 'cashing in' in the passage can possibly mean

- A Profiting
- B Running away
- C Paying money
- D Bailing out
- E Buffering

Answer: A

Explanation:

In the context of passage, cashing in used for hoarders. It means that they are profiting.

Hence, the correct option is A.

Question 158

Which of the following is most similar in meaning to the word **tight** as used in the passage ?

- A Firm
- B Loose
- C Limited
- D Taut
- E Tense

Answer: C

Explanation:

In the passage, 'tight' is used in context of 'limited' supply.

Hence, the correct option is C.

Question 159

Which of the following is most similar in meaning to the word **temper** as used in the passage ?

- A Displeasure
- B Anger
- C Rage
- D Harness
- E Control

Answer: E

Explanation:

In the passage, temper is used in context of 'tempering the inflation' meaning 'controlling the inflation'.

Hence, the correct option is E.

Question 160

Which of the following is most opposite in meaning of the word **archaic** as used in the passage ?

- A Simple
- B Straightforward
- C Modern
- D Lively
- E Ancient

Answer: C

Explanation:

In the context of passage, the word 'archaic' means 'old'.

Hence, the correct option is 'Modern' i.e option C.

Download Highly Rated Banking APP

Instructions

Which of the phrases (a) (b)(c)and (d) given below each sentence should replace the phrase printed in bold in the sentence to make it grammatically correct ?If the sentence is correct as it is given and no correction is required mark (e) as the answer.

Question 161

Seeing that there was an ongoing sale in one of her favourite stores Seeta **made a bee line** for it immediately after entering the mall

- A made a bee's line for
- B make bees lined to
- C made a bee line to
- D make bee line to
- E No correction required

Answer: E

Explanation:

The statement is grammatically correct with proper usage of phrase.

Hence, the correct option is E.

Question 162

Sharon **made it to work in the nicks of times** or else she would have missed the meeting

- A nick of time
- B nicked time
- C nick of timeliness
- D nick and time
- E No correction required

Answer: A

Explanation:

The english idiom is 'nick of time' which means at the last possible instant.

All other variations of the phrase given in option are wrong.

The grammatically correct statement would be, 'Sharon made it to work in the nick of time or else she would have missed the meeting.'

Hence, the correct option is A.

Question 163

Varun was on cloud nine after having stood **first in his class**.

- A in ninth cloud
- B on nine clouds
- C a cloudy nine
- D cloud on nine
- E No correction required

Answer: E

Explanation:

The sentence is grammatically correct and no correction is required.

Hence, E is correct option.

SBI PO Solved Previous Papers (Download PDF)

Question 164

Vithal had a habit of pass the buck when it came to important issues at work

- A pass to bucking
- B passing buck
- C passing the buck
- D pass buck
- E No correction required

Answer: C

Explanation:

'Passing the buck' means to attribute the responsibility to another person.

Other options might seem variation of the same but are incorrect grammatically.

The grammatically correct sentence would read as, 'Vithal had a habit of passing the buck when it came to important issues at work.'

Hence, the correct option is C.

Question 165

Puneet raked his brains and tried to find an answer to a tricky question given in the paper but couldn't find one

- A rake his brain
- B raked his brains
- C raked brains
- D raked brain
- E No correction required

Answer: B

Explanation:

The sentence with correct usage of phrase would read as, 'Puneet raked his brains and tried to find an answer to a tricky question given in the paper but couldn't find one.'

Hence, the correct option is option B.

Instructions

Each question below has two blanks each blank indicating that something has been omitted Find out which option can be used to fill up the blank in the sentence in the same sequence to make it meaningfully complete.

Question 166

The water transport project on the west coast is ____to get a shot in the arm with a new plan in which the Road Development Corporation will build the infrastructure and ____a private party to operate the service.

- A scheduled let

- B verge permit
- C set sanctions
- D slated allow
- E bound task

Answer: D

Explanation:

The correct usage is pair of words would be slated and allow.

The sentence would read as:

The water transport project on the west coast is slated to get a shot in the arm with a new plan in which the Road Development Corporation will build the infrastructure and allow a private party to operate the service.

Hence, the correct option is D.

Get Free Study Material & Updates - Whatsapp "Updates" to 7661025557

Question 167

As the weekend finally rolled around the city folk were only ____ happy to settle down and laugh their cares ____

- A just, afar
- B too, away
- C extremely, off
- D very, up
- E so, on

Answer: B

Explanation:

The pair of words corresponding to option B most suits the context of the sentence. Hence, the sentence would read as: As the weekend finally rolled around the city folk were only too happy to settle down and laugh their cares away.

Question 168

The flood of brilliant ideas has not only _____ us but has also encouraged us to _____ the last date for submission of entries

- A overwhelmed, extend
- B enjoyed, stretch
- C dismayed, decide
- D scared, scrap
- E happy, boundary

Answer: A

Explanation:

The pair of words corresponding to option A is most appropriate. The sentence reads as: The flood of brilliant ideas has not only overwhelmed us but has also encouraged us to extend the last date for submission of entries.

Question 169

_____about prolonged power cuts in urban areas, the authorities have decided to _____over to more reliable and eco-friendly system to run its pumps

- A Worried, shift
- B Frantic, move
- C Troubled, jump
- D Concerned switch
- E Endangered, click

Answer: D

Explanation:

The pair of words corresponding to option D is most appropriate. The sentence reads as: Concerned about prolonged power cuts in urban areas, the authorities have decided to switch over to more reliable and eco-friendly system to run its pump.

SBI PO Free Mocks (Latest Pattern)

Question 170

The high cutoff marks this year have _____college admission-seekers to either _____for lesser known colleges or change their subject preferences

- A cajoled,ask
- B pressured,sit
- C forced, settle
- D strained,compromise
- E entrusted wait

Answer: C

Explanation:

The pair of words corresponding to option C is most appropriate. The sentence reads as: The high cutoff marks this year have forced college admission-seekers to either settle for lesser known colleges or change their subject preferences.

Instructions

Read the following passage carefully and answer the question given below it Certain words/phrases have been printed in bold to help you locate them while answering some of the question.

India is rushing headlong towards economic success and modernisation counting on high-tech industries such as information technology and biotechnology to **propel** the nation to prosperity India's recent announcement that it would no longer produce unlicensed inexpensive generic pharmaceuticals bowed to the realities of the world Trade Organisation while at the same time challenging the domestic drug industry to compete with the multinational firms. Unfortunately its weak higher education sector constitutes the **Achilles' heel** of this strategy. Its systematic disinvestment in higher education in recent years has yielded neither world-class research nor very many highly trained scholars scientists or managers to sustain high-tech development.

India's main competitors-especially China but also Singapore Taiwan and South Korea are investing in large and differentiated higher education systems. They are providing access to a large number of students at the bottom of the academic system while at the same time building some research-based universities that are able to compete with the world's best institutions. The recent London Times Higher Education Supplement ranking of the world's top 200 universities included three in China three in Hong Kong three in South Korea One in Taiwan and one in India. These countries are positioning themselves for leadership in the knowledge-based economies of the coming era.

There was a time when countries could achieve economic success with cheap labour and low-tech manufacturing, Low wages still help but contemporary large scale development requires a sophisticated and at least partly knowledge-based economy India has chosen

that path but will find a major **stumbling block** in its university system

India has significant advantages in the 21st century knowledge race. It has a large higher education sector the third largest in the world in terms of numbers of students after China and the United States. It uses English as a primary language of higher education and research. It has a long academic tradition. Academic freedom is respected. There are a small number of high-quality institutions, departments, and centres that can form the basic sector in higher education. The fact that the states rather than the central Government exercise major responsibility for higher education creates a rather "cumbersome" but the system allows for a variety of policies and approaches.

Yet the weaknesses far outweigh the strengths. India educates approximately 10 per cent of its young people in higher education compared to more than half in the major industrialised countries and 15 per cent in China. Almost all of the world's academic system "resemble" a pyramid, with a smaller high-quality tier at the top. None of its universities occupies a solid position at the top. A few of the best universities have some excellence. The University Grants Commission's recent major support to five universities to build on their recognised strength is a step towards recognising a **differentiated** academic system and "fostering" excellence. These universities combined enrol; well under one per cent of the student population.

Question 171

Which of the following is TRUE in the context of the passage ?

- A The top five universities in India educate more than 10 percent of the Indian student population.
- B India's higher education sector is the largest in the world.
- C In past countries could progress economically through low manufacturing cost as well as low wages of labourers.
- D India has recently invested heavy sums in the higher education sector leading to world-class research.
- E All are true.

Answer: C

Explanation:

In the third paragraph of the passage, it is clearly mentioned that in the past countries could progress economically through low manufacturing cost as well as low wages of labour.

Hence, the correct option is C.

Question 172

What does the phrase 'Achilles heel' mean as used in the passage ?

- A Weakness
- B Quickness
- C Low quality
- D Nimbleness
- E Advantage

Answer: A

Explanation:

Achilles heel is an idiom which means weakness in spite of overall strength.

In the context of passage, phrase 'Achilles heel' does refer to 'weakness'.

Hence, the correct option is option A.

SBI Clerk Free Mock Test (Latest Pattern)

Question 173

Which of the following is/are India's strength/s in terms of higher education ?

- (A) Its system of higher education allows variations
- (B) Medium of instruction for most higher learning is English
- (C) It has the paraphernalia albeit small in number to build a high-quality higher educational sector

- A Only (B)
- B Only(A) and (B)
- C Only (C)
- D Only (B) and (C)
- E All (A),(B) and (C)

Answer: D

Explanation:

As paragraph 3 outlines, both statements B and C are correct.

India offers specialization in higher education in only selected areas.

Only B and C are statements stating India's strength in higher education.

Therefore, option D is correct.

Question 174

What are the Asian countries other than India, doing to head towards a knowledge based economy ?

- (A) Building competitive research based universities
- (B) Investing in diverse higher education system
- (C) Providing access to higher education to select few students

- A Only (A)
- B Only (A) and (B)
- C Only (B) and (C)
- D Only (B)
- E All (A) (B) and (C)

Answer: B

Explanation:

In paragraph 2 of the passage, author states that countries like China, Singapore, Taiwan and South Korea are investing in large and differentiated education system. They are also providing avenues for research. Hence, both the statements I and II are correct. Option B is correct.

Question 175

Which of the following is possibly the most appropriate title for the passage ?

- A The Future of Indian Universities
- B Methods of overcoming the Educational Deficit in India
- C India and the Hunt for a knowledge Based Economy
- D Indian Economy Versus Chinese Economy
- E Indian Economy and its Features

Answer: C

Explanation:

The passage gives various different aspects of India's higher education scenario. However, it's main purpose is to put India in context of other nations and their hunt for a knowledge based economy.

SBI Clerk Previous Papers (Download PDF)

Question 176

What did India agree to do at the behest of the World Trade Organisation ?

- A It would stop manufacturing all types of pharmaceuticals
- B It would ask its domestic pharmaceutical companies to compete with the international ones
- C It would buy licensed drugs only from the USA
- D It would not manufacture cheap common medicines without a licence
- E None of these

Answer: D

Explanation:

As stated in first paragraph of the passage, India agreed to stop manufacturing cheap common medicines without licence. Hence, option D is correct.

Question 177

Which of the following is/are India's weakness/es when it comes to the higher education ?

- (A) Indian universities do not have the requisite teaching faculty to cater to the needs of the higher education sector
- (B) Only five Indian universities occupy the top position very strongly in the academic pyramid when it comes to higher education
- (C) India has the least percentage of young population taking to higher education as compared to the rest of the comparable countries

- A Only (A) and (B)
- B Only (B)
- C Only (C)
- D Only (A) and (C)
- E All (A) (B) and (C)

Answer: C

Explanation:

Only 10% of India's young population takes to higher education. Therefore, statement corresponding to option C is correct.

Question 178

Which of the following according to the passage is/are needed for the economic success of a country ?

- (A) Cheap labour
- (B) Educated employees
- (C) Research institutions to cater to the needs of development

- A Only (A) and (B)
- B Only (B)
- C Only (C)

- D Only (B) and (C)
- E All (A), (B) and (C)

Answer: E

Explanation:

The author over the course of passage does outline the need of cheap labour, educated employees and research institutions in need for economic development of the country. These ensures availability of cheap manpower, skilled and knowledgeable employees and research for innovation and subsequent growth.

Hence, the correct option is E.

Banking Daily Free Topic Test

Question 179

Choose the word of words which is most similar in meaning to the word printed in bold as used in the passage: **FOSTERING**

- A Safeguarding
- B Neglecting
- C Sidelining
- D Nurturing
- E Ignoring

Answer: D

Explanation:

In the context of passage, 'fostering' refers to 'nurturing' and is used in context of 'growth'. Hence, the correct option is D.

Question 180

Choose the word of words which is most similar in meaning to the word printed in bold as used in the passage: **PROPEL**

- A Drive
- B Jettison
- C Burst
- D Acclimatise
- E Modify

Answer: A

Explanation:

In the context of passage 'propel' is used in reference of 'driving forward' the growth.

Hence, the correct option is A.

Question 181

Choose the word of words which is most similar in meaning to the word printed in bold as used in the passage: **MASSIVE**

- A Lamp sum
- B Strong
- C Little

D Gaping

E Huge

Answer: E

Explanation:

Massive, here, in the passage, refers to enormous or huge.

Therefore, the correct option is option E.

Question 182

Choose the word of words which is most similar in meaning to the phrase printed in bold as used in the passage: STUMBLING BLOCK

A Argument

B Frustration

C Advantage

D Hurdle

E Fallout

Answer: D

Explanation:

In general sense, 'stumbling block' refers to something which causes difficulty in progress.

In the context of given passage, 'stumbling block' refers to hurdle i.e something which is obstructing the progress.

Hence, the correct option is D.

Question 183

Choose the word which is opposite in meaning to the word printed in bold as used in the passage: CUMBERSOME

A Handy

B Manageable

C Breathtaking

D Awkward

E Difficult

Answer: B

Explanation:

Here, in the passage, 'cumbersome' refers to 'difficult' to manage. It's opposite is manageable. Hence, the correct option is B.

Question 184

Choose the word which is opposite in meaning to the word printed in bold as used in the passage: RESEMBLE

A Against

B Similar to

C Mirror

D Differ from

E Unfavourable to

Answer: D

Explanation:

Here, resemble means to show similarity. Opposite of resemble would be 'to differ'. Hence, the correct option is D.

Download Highly Rated Banking APP

Question 185

Choose the word which is opposite in meaning to the word printed in bold as used in the passage: **DIFFERENTIATED**

- A Similar
- B Varied
- C :Harmonized
- D Synchronized
- E Discriminated

Answer: A

Explanation:

Here, differentiated is used in context of 'differing from'. And opposite of that usage would be 'similar'.

Hence, the correct option is option A.

Instructions

Rearrange the following six sentence (A),(B),(C),(D),(E) and (F) in the proper sequence to form a meaningful paragraph then answer the question given below them.

- (A)Its prevalence reflects very badly on a society that is not able to stop this evil.
- (B)Though elimination of child labour is an impossible task considering the current socio-economic scenario of these poor families the Indian government is committed to the task of ensuring that no child remains illiterate hungry and without medical care,
- (C)Therefore unless the socio-economic status of the poor families is improved India has to live with child labour
- (D)The members of these households have to send their children to work even if the future of these innocent children is ruined as that is the only choice open for them to survive in the world
- (E)Child labour is no doubt an evil that should be done away with at the earliest
- (F)But in a society where many households may have to suffer the pangs of hunger if the children are withdrawn from work beggars can't be choosers

Question 186

Which of the following should be the **FIRST** sentence after rearrangement ?

- A A
- B E
- C C
- D F
- E D

Answer: B

Explanation:

The order of sentences to form meaningful paragraph is given as:
(The statement number in question has been left unchanged for ease of understanding.)

(E) Child labour is no doubt an evil that should be done away with at the earliest. (Here, premise of child labour is introduced and therefore this forms the first sentence.)

(A) Its prevalence reflects very badly on a society that is not able to stop this evil. (This will naturally be the second sentence, as there is continuation of explanation of the 'evil' of child labour.)

(F) But in a society where many households may have to suffer the pangs of hunger if the children are withdrawn from work beggars can't be choosers. (Here, the most prevalent and primary reason for child labour is given. The paragraph is now taking turn towards explanation.)

(D) The members of these households have to send their children to work even if the future of these innocent children is ruined as that is the only choice open for them to survive in the world. (Again, further explanation is given.)

(C) Therefore unless the socio-economic status of the poor families is improved India has to live with child labour. (This should form penultimate sentence of the paragraph. Here, a sense of closure to the ongoing premise is apparent.)

(B) Though elimination of child labour is an impossible task considering the current socio-economic scenario of these poor families the Indian government is committed to the task of ensuring that no child remains illiterate hungry and without medical care. (This will form the last sentence of the paragraph mainly because it offers a sense of closure to the idea.)

Hence option B is correct.

Question 187

Which of the following should be the **THIRD** sentence after rearrangement ?

A B

B A

C C

D F

E E

Answer: D

Explanation:

The order of sentences to form meaningful paragraph is given as:

(The statement number in question has been left unchanged for ease of understanding.)

(E) Child labour is no doubt an evil that should be done away with at the earliest. (Here, premise of child labour is introduced and therefore this forms the first sentence.)

(A) Its prevalence reflects very badly on a society that is not able to stop this evil. (This will naturally be the second sentence, as there is continuation of explanation of the 'evil' of child labour.)

(F) But in a society where many households may have to suffer the pangs of hunger if the children are withdrawn from work beggars can't be choosers. (Here, the most prevalent and primary reason for child labour is given. The paragraph is now taking turn towards explanation.)

(D) The members of these households have to send their children to work even if the future of these innocent children is ruined as that is the only choice open for them to survive in the world. (Again, further explanation is given.)

(C) Therefore unless the socio-economic status of the poor families is improved India has to live with child labour. (This should form penultimate sentence of the paragraph. Here, a sense of closure to the ongoing premise is apparent.)

(B) Though elimination of child labour is an impossible task considering the current socio-economic scenario of these poor families the Indian government is committed to the task of ensuring that no child remains illiterate hungry and without medical care. (This will form the last sentence of the paragraph mainly because it offers a sense of closure to the idea.)

Hence option D is correct.

SBI PO Solved Previous Papers (Download PDF)

Question 188

Which of the following should be the **SECOND** sentence after rearrangement ?

- A A
- B F
- C D
- D B
- E C

Answer: A

Explanation:

The order of sentences to form meaningful paragraph is given as:

(The statement number in question has been left unchanged for ease of understanding.)

(E) Child labour is no doubt an evil that should be done away with at the earliest. (Here, premise of child labour is introduced and therefore this forms the first sentence.)

(A) Its prevalence reflects very badly on a society that is not able to stop this evil. (This will naturally be the second sentence, as there is continuation of explanation of the 'evil' of child labour.)

(F) But in a society where many households may have to suffer the pangs of hunger if the children are withdrawn from work beggars can't be choosers. (Here, the most prevalent and primary reason for child labour is given. The paragraph is now taking turn towards explanation.)

(D) The members of these households have to send their children to work even if the future of these innocent children is ruined as that is the only choice open for them to survive in the world. (Again, further explanation is given.)

(C) Therefore unless the socio-economic status of the poor families is improved India has to live with child labour. (This should form penultimate sentence of the paragraph. Here, a sense of closure to the ongoing premise is apparent.)

(B) Though elimination of child labour is an impossible task considering the current socio-economic scenario of these poor families the Indian government is committed to the task of ensuring that no child remains illiterate hungry and without medical care. (This will form the last sentence of the paragraph mainly because it offers a sense of closure to the idea.)

Hence option A is correct.

Question 189

Which of the following should be the FIFTH sentence after rearrangement ?

- A E
- B A
- C F
- D C
- E D

Answer: D

Explanation:

The order of sentences to form meaningful paragraph is given as:

(The statement number in question has been left unchanged for ease of understanding.)

(E) Child labour is no doubt an evil that should be done away with at the earliest. (Here, premise of child labour is introduced and therefore this forms the first sentence.)

(A) Its prevalence reflects very badly on a society that is not able to stop this evil. (This will naturally be the second sentence, as there is continuation of explanation of the 'evil' of child labour.)

(F) But in a society where many households may have to suffer the pangs of hunger if the children are withdrawn from work beggars can't be choosers. (Here, the most prevalent and primary reason for child labour is given. The paragraph is now taking turn towards explanation.)

(D) The members of these households have to send their children to work even if the future of these innocent children is ruined as that is

the only choice open for them to survive in the world. (Again, further explanation is given.)

(C)Therefore unless the socio-economic status of the poor families is improved India has to live with child labour. (This should form penultimate sentence of the paragraph. Here, a sense of closure to the ongoing premise is apparent.)

(B)Though elimination of child labour is an impossible task considering the current socio-economic scenario of these poor families the Indian government is committed to the task of ensuring that no child remains illiterate hungry and without medical care. (This will form the last sentence of the paragraph mainly because it offers a sense of closure to the idea.)

Hence option D is correct.

Question 190

Which of the following should should be the SIXTH sentence after rearrangement ?

A A

B C

C E

D D

E B

Answer: E

Explanation:

The order of sentences to form meaningful paragraph is given as:

(The statement number in question has been left unchanged for ease of understanding.)

(E)Child labour is no doubt an evil that should be done away with at the earliest. (Here, premise of child labour is introduced and therefore this forms the first sentence.)

(A)Its prevalence reflects very badly on a society that is not able to stop this evil. (This will naturally be the second sentence, as there is continuation of explanation of the 'evil' of child labour.)

(F)But in a society where many households may have to suffer the pangs of hunger if the children are withdrawn from work beggars can't be choosers. (Here, the most prevalent and primary reason for child labour is given. The paragraph is now taking turn towards explanation.)

(D)The members of these households have to send their children to work even if the future of these innocent children is ruined as that is the only choice open for them to survive in the world. (Again, further explanation is given.)

(C)Therefore unless the socio-economic status of the poor families is improved India has to live with child labour. (This should form penultimate sentence of the paragraph. Here, a sense of closure to the ongoing premise is apparent.)

(B)Though elimination of child labour is an impossible task considering the current socio-economic scenario of these poor families the Indian government is committed to the task of ensuring that no child remains illiterate hungry and without medical care. (This will form the last sentence of the paragraph mainly because it offers a sense of closure to the idea.)

Hence option E is correct.

Get Free Study Material & Updates - Whatsapp "Updates" to 7661025557

Instructions

In the following passage there are blanks each of which has been numbered These numbers are printed below the passage and against each five words are suggested one of which fits the blank appropriately. Find out the appropriate word in each case.

Around the world forests are being (191) at a rate of about thirteen million hectares a year and deforestation accounts for an estimated 17%-20% of all global emissions In addition forests and other terrestrial carbon sinks play a (192) role in preventing runaway climate change soaking up a full 2.6 GT of atmospheric carbon every year The destruction of forests therefore not only emits carbon a staggering 1.6 Gt a year Which severely (193) forests capacity to absorb emissions from other sources but also drastically (194) the amount of forested land available to acts as a carbon sink in the future

However the effects of deforestation extend beyond carbon Rainforests (195) a wide variety of ecosystems services from regulating rainfall to purifying groundwater and keeping fertile soil from (196) deforestation in one area can seriously damage food production and (197) to clean water in an entire region The value of global ecosystem services has been estimated at 33 trillion USD each year almost half of global GDP but these services have been taken for granted without a mechanism to make the market reflect their

value. Rainforests are also a home and (198) of income for a huge number of people in Africa Asia and South America. (199) this economic pressures frequently drive both local communities and national governments in the developing world to (200) these forests in ways that are unsustainable clear-cutting vast areas for fuel timber mining or agriculture land

Question 191

191

- A ended
- B destroyed
- C extinct
- D killed
- E wasted

Answer: B

Explanation:

Ended, extinct, wasted and killed don't suit the context of the sentence. They don't make sentence seem sensible.

Hence, use of destroyed is correct.

Therefore, option B is correct.

Question 192

192

- A tough
- B important
- C vital
- D biggest
- E effective

Answer: C

Explanation:

Here, important and vital both mean same thing.

However, to make grammatical sense, use of vital is appropriate.

Hence, option C is correct.

Question 193

193

- A affects
- B diminishes
- C increases
- D alternates
- E impairs

Answer: E

Explanation:

Here, affects and diminishes both can be choices. However, 'impairs' is most appropriate in context of paragraph. Hence, the correct option is E.

SBI PO Free Mocks (Latest Pattern)

Question 194

194

- A plagues
- B develops
- C reduces
- D shortens
- E influences

Answer: C

Explanation:

Among all the options, 'reduces' is most appropriate and suits the context well.

Hence, C is the correct option.

Question 195

195

- A sell
- B offer
- C give
- D provide
- E earns

Answer: B

Explanation:

'Offer' is most appropriate in the context. Other options don't seem much in sync with the context.

Hence, the correct option is B.

Question 196

196

- A transforming
- B decoding
- C erupting
- D draining
- E eroding

Answer: E

Explanation:

Here, the reasons of deforestation are given. We generally use 'erosion' in relation with 'soil'.

Hence, the correct option is E.

SBI Clerk Free Mock Test (Latest Pattern)

Question 197

197

- A handiness
- B excess
- C availability
- D access
- E supply

Answer: D

Explanation:

Here, 'availability' and 'access' both can be used. However, 'access' is much more appropriate usage.

Hence, the correct option is D.

Question 198

198

- A beginning
- B source
- C ways
- D reference
- E measure

Answer: B

Explanation:

We, generally, use 'source of income'.

Hence, option B is correct.

Question 199

199

- A Despite
- B Also
- C In spite
- D Apart
- E Beside

Answer: A

Explanation:

'Despite' makes much more grammatical sense than other words given as options.

Hence, the correct option is A.

[SBI Clerk Previous Papers \(Download PDF\)](#)

Question 200

200

- A exploit
- B encompass
- C nurture
- D work
- E improve

Answer: A

Explanation:

Only 'exploit' suits the context to correctly convey the meaning.

Hence, option A is correct.

[Banking Daily Free Topic Test](#)

[Download Highly Rated Banking APP](#)

[SBI PO Solved Previous Papers \(Download PDF\)](#)

[Get Free Study Material & Updates - Whatsapp "Updates" to 7661025557](#)

[SBI PO Free Mocks \(Latest Pattern\)](#)

[SBI Clerk Free Mock Test \(Latest Pattern\)](#)

[SBI Clerk Previous Papers \(Download PDF\)](#)

[Banking Daily Free Topic Test](#)