



## Important Questions On Data Interpretation for RRB NTPC

All rights reserved. No part of this publication may be reproduced, distributed, or transmitted in any form or by any means, electronic, mechanical, photocopying, recording or otherwise, or stored in any retrieval system of any nature without the permission of cracku.in, application for which shall be made to [support@cracku.in](mailto:support@cracku.in)

### Instructions

The following table shows the sectoral distribution of production of Fabrics in India

Sector	2002-03	2003-04	2004-05	2005-06	2006-07	2007-08	2008-09
Mill Sector	1496	1434	1526	1656	1746	1781	1796
Power looms	33835	34794	37437	41044	44383	46529	45725
Handloom	5980	5493	5722	6108	6536	6947	6677
Others	662	662	693	769	724	768	768
Total	41973	42383	45378	49577	53389	56025	54966

### Question 1

If the same % decrease in the production of fabrics in 2008-09 continues the next year also what is the production in 2009-10 ?

- A 53972
- B 53927
- C 53792
- D 53279

**Answer:** B

### Explanation:

percentage loss in 2008-09 =  $(56025 - 54966) / 56025 \times 100 = 1.89\%$

the percentage loss in 2009-10 is 1.89%

=> the fabric production in 2009-10 = 98.11% of 54966 = 53927.68  $\approx$  53927

### Instructions

Study the following table and answer the questions based on it.

Below is the Household Expenditure (in Thousand rupees) per annum.

Year	Household Expenditure				
	Grocery	Rent	Leisure	EMI	Taxes
2010	32	12	5	3.4	9
2011	37	13	6.5	4.5	13
2012	46	14	7.3	5.6	17
2013	48	16	7.9	6.4	18
2014	52	18	8.5	7.4	19

### Question 2

What is the total Household Expenditure for the year 2012?

- A Rs. 89,900
- B Rs. 87,120
- C Rs. 89,100
- D Rs. 88,200

**Answer:** A

### Explanation:

Total household expenditure for year 2012

$= (46 + 14 + 7.3 + 5.6 + 17) \times 1000$

=89,900

So, the answer would be option a)Rs. 89,900

### Question 3

Expenditure on EMI forms what percentage of expenditure on Grocery for the year 2014?

- A 11.34 %
- B 14.23 %
- C 13.22 %
- D 15.55 %

Answer: B

#### Explanation:

Expenditure on EMI = 7.4

Expenditure on Grocery = 52

Required percentage =  $\frac{7.4}{52} \times 100 = 14.23\%$

So, the answer would be option b)14.23 %

## RRB NTPC Previous Papers (Download PDF)

### Question 4

What is the average spending on Leisure per annum?

- A Rs. 7,040
- B Rs. 6,500
- C Rs. 7,100
- D Rs. 7,400

Answer: A

#### Explanation:

Average spending on Leisure per annum =  $\frac{(5+6.5+7.3+7.9+8.5) \times 1000}{5} = 7040$

So, the answer would be option a)Rs. 7,040

### Instructions

Study the following table and answer the questions below

Given below is the list of Expenditures (in lakh Rupees) per annum of company Z Over the Years.

Year	Expenditure Items for company Z				
	Salary	Fuel and transport	Bonus	Interest on Loans	Taxes
2011	412	227	15	133.4	98
2012	557	233	16.5	142.5	138
2013	656	245	17.3	151.6	174
2014	680	260	17.9	166.4	188
2015	720	284	18.5	179.4	198

### Question 5

What is the average amount of Bonus per year?

- A Rs. 17.04 Lakhs
- B Rs. 17 Lakhs
- C Rs. 17.4 Lakhs
- D Rs. 16.8 Lakhs

**Answer:** A

#### **Explanation:**

Expenditures on Bonus by years :

in 2011 : 15 lakhs

in 2012 : 16.5 lakhs

in 2013 : 17.3 lakhs

in 2014 : 17.9 lakhs

in 2015 : 18.5 lakhs

so, total expenditure made on Bonus over these five years

$$= 15 + 16.5 + 17.3 + 17.9 + 18.5$$

$$= 85.2.$$

So, average amount of bonus per year

$$= 85.2/5 = 17.04 \text{ lakhs.}$$

A is correct choice.

### Question 6

What is the total expenditure of Company Z in the year 2011?

- A Rs. 897.2 Lakhs
- B Rs. 827.5 Lakhs
- C Rs. 885.4 Lakhs
- D Rs. 727.1 Lakhs

**Answer:** C

#### **Explanation:**

In 2011 expenditure made by company Z in different sectors are :

Salary=412 lakhs.

Fuel and Transport=227 lakhs.

Bonus=15 lakhs.

Interest on loans=133.4 lakhs.

Taxes=98 lakhs.

So, in 2011, total expenditure made by company Z was =  $412 + 227 + 15 + 133.4 + 98$  lakhs

$$= 885.4 \text{ lakhs.}$$

C is correct choice.

## RRB NTPC Free Mock Tests

### Question 7

What is the expenditure on Fuel and Transport as a percentage of expenditure on Salary for the year 2012?

- A 41.8%
- B 40.1%
- C 43.1%
- D 44.2%

**Answer:** A

#### Explanation:

In 2012, expenditure on Fuel and Transport was =233 lakhs and expenditure on salary was =557 lakhs.

So, the required percentage would be

$$= (233/557) \times 100.$$

$$= 41.83.$$

A is correct choice.

#### Instructions

The following table represents the marks of four students in five subjects.

	Physics	Chemistry	Maths	History	Geography
Shyam	45	50	49	51	65
Sunil	60	55	60	59	61
Jagdish	35	41	39	30	45
Rajesh	50	55	51	57	62

Consider the information and answer questions based on it.

### Question 8

The difference between the total marks scored by Sunil and Jagdish is

- A 190
- B 125
- C 105
- D 115

**Answer:** C

#### Explanation:

$$\text{Sunil} = 60+55+60+59+61 = 295$$

$$\text{Jagdish} = 35+41+39 +30+45 = 190$$

$$\text{Difference} = 105$$

### Question 9

Who has the highest average marks?

- A Shyam

- B Sunil
- C Jagdish
- D Rajesh

**Answer: B**

**Explanation:**

$$\text{Shyam} = \frac{45+50+49+51+65}{5} = 51$$

$$\text{Sunil} = \frac{60+55+60+59+61}{5} = 59$$

$$\text{Jagdish} = \frac{35+41+39+30+45}{5} = 38$$

$$\text{Rajesh} = \frac{50+55+51+57+62}{5} = 55$$

Sunil has the highest average marks

## 20 RRB NTPC Mocks-Tests Rs.149

**Instructions**

Consider the table and answer questions based on it  
The following table represents the category wise count of books in four local libraries.

Category	ABL	GHL	MNL	PQL
Self-help	150	170	200	200
Nonfiction	500	600	550	600
Fiction	750	610	700	600
Management	100	130	100	110
Comics	175	100	100	75
Technical	115	100	150	200

**Question 10**

Which library has the highest total count of books?

- A ABL
- B GHL
- C MNL
- D PQL

**Answer: C**

**Explanation:**

ABL = 1790

GHL = 1710

MNL = 1800

PQL = 1785

the highest total count of books = MNL

**Question 11**

The difference between the total number of nonfiction and management books of all four libraries is

- A 1850
- B 1810
- C 2250
- D 1800

**Answer: B**

**Explanation:**

Nonfiction = (500+600+550+600)= 2250

Management = (100+130+100+ 110) = 440

difference = 1810

**Instructions**

Study the following table and answer the questions:

The table below depicts the Number of Books Sold by 5 cities during 5 months.

Months	City A	City B	City C	City D	City E
June	213	200	195	253	229
July	156	208	216	187	175
August	177	197	185	181	215
September	220	145	235	265	231
October	253	188	278	243	249

**Question 12**

if 30% of the total number of books sold by City B, D and E together in July were academic books, how many non – academic books were sold by the same Cities together in the same month?

- A 379
- B 389
- C 399
- D 309

**Answer: C**

**Explanation:**

total number of books sold by City B in July=208

total number of books sold by City D in July=187

total number of books sold by City E in July=175

total number of books sold by City B, D and E together in July=208+187+175=570

30% of 570 =  $\frac{30}{100} \times 570 = 171$

non – academic books=570-171=399

## Daily Free RRB Online Test

**Question 13**

What is the respective ratio between the total number of books sold by City A in July and September together and total number of books sold by City E in August and October together?

A 57 : 49

B 49 : 57

C 58 : 47

D 47 : 58

**Answer: D**

**Explanation:**

total number of books sold by City A in July and September= $156+220=376$

total number of books sold by City E in August and October= $215+249=464$

Ratio= $376:464=47:58$

**Question 14**

What is the average number of books sold by City C in July, September and October together?

A 243

B 242

C 234

D 224

**Answer: A**

**Explanation:**

Total book sold by City C in July, September and October= $216+235+278=729$

Average= $729/3=243$

**Instructions**

Read the table and answer the questions based on it.

The table below represents the distance (in km) travelled by six trucks on six different days of the week.

Day	Truck					
	P	Q	R	S	T	U
Monday	240	250	320	325	330	300
Tuesday	320	264	308	314	318	314
Wednesday	324	294	330	312	310	325
Thursday	288	300	310	278	260	275
Friday	366	302	288	292	270	268
Saturday	292	284	260	274	280	242

**Question 15**

If to travel the given distance, the time taken by Truck Q on Friday was 8 hours, then what was its average speed on that day?

A 37.75km/hr

B 42.50 km/hr

C 28.25 km/hr

D 32.25 kn/hr



Answer: A

Explanation:

$$\text{AvgSpeed} = \frac{\text{Total distance}}{\text{Time}}$$

$$\text{AvgSpeed} = \frac{302}{8}$$

37.75km/hr

## RRB Group-D Previous Papers

Question 16

What is the total distance travelled by all the trucks together on Saturday'?

- A 1623 km
- B 1263 km
- C 1362 km
- D 1632 km

Answer: D

Explanation:

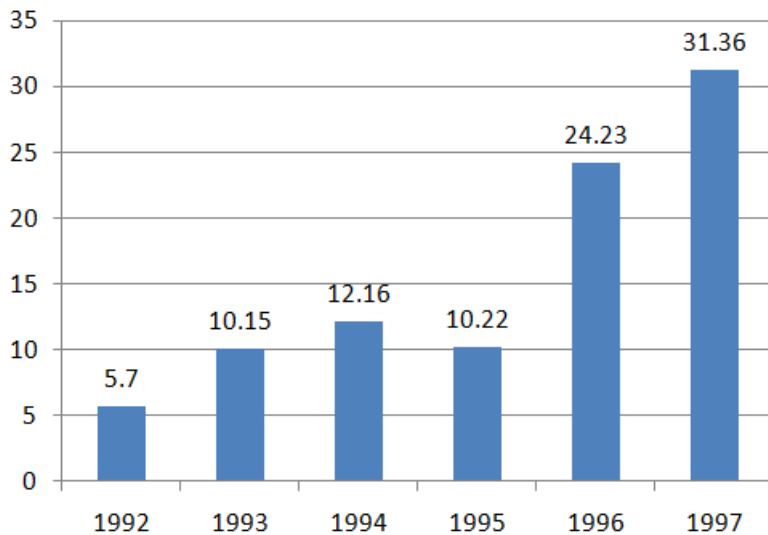
total distance travelled on sunday=292+284+260+274+280+242=1632km

Instructions

Answer the questions based on the following bar chart:

The following bar chart shows the trends of mutual funds investments into India from all over the world.

India's Mutual Funds Investment



Question 17

If India mutual funds investments from countries was proportionately the same in 1992 and 1997 as the total mutual funds investments from all over the world and the total mutual funds investments in 1992 from the countries was Euro 2 million. What was the amount of mutual funds investments from the countries in 1997?

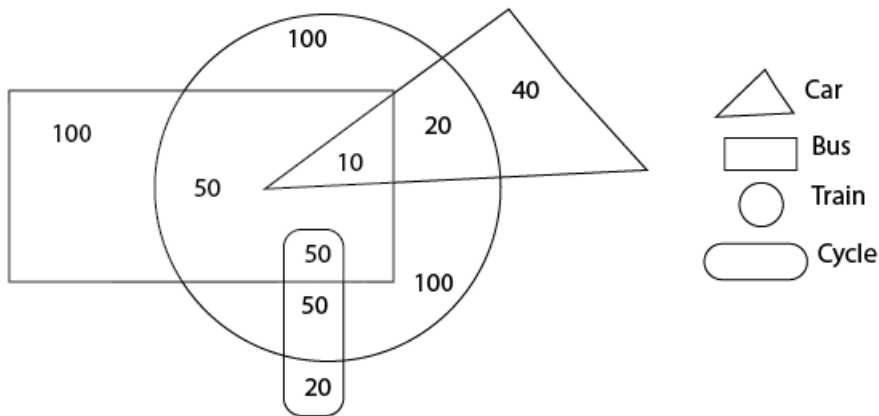
- A 11
- B 0.72
- C 11.28

D 11.5

Answer: A

**Instructions**

Study the following diagram and answer questions based on it.



**Question 18**

The ratio of total number of train travelers to the people who do not travel by train is

- A 27/16
- B 28/16
- C 37/16
- D 38/16

Answer: D

**Explanation:**

Total number of train travelers =  $100 + 10 + 20 + 50 + 50 + 50 + 100 = 380$

Number of people who do not travel with train =  $100 + 40 + 20 = 160$

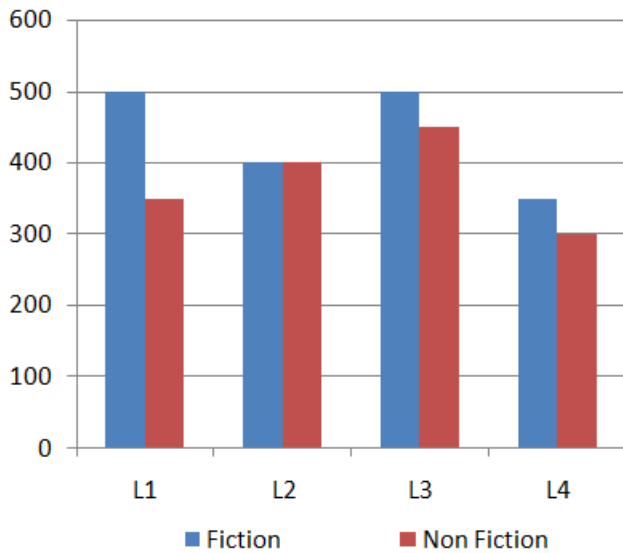
Required ratio =  $380 : 160 = 38 : 16$ .

**RRB Free Videos (You Tube Channel)**

**Instructions**

Consider the bar chart and answer questions based on it.

The bar chart represents number of fiction and non-fiction books in four libraries L1, L2, L3 and L4.



**Question 19**

The ratio of total books of libraries L1 and L3 to L2 and L4 is

- A 29/36
- B 33/32
- C 36/29
- D 32/33

**Answer: C**

**Explanation:**

Total number of books from L1 and L3 =  $(500 + 350) + (500 + 450) = 1800$   
 Total numbers of books from L2 and L4 =  $(400 + 400) + (350 + 300) = 1450$   
 Required ratio =  $1800 : 1450 = 36 : 29$ .

**Question 20**

The ratio of total number of Non Fiction to Fiction books in all libraries is

- A 7/6
- B 6/7
- C 15/17
- D 17/15

**Answer: B**

**Explanation:**

Total number of non fiction books =  $350 + 400 + 450 + 300 = 1500$   
 Total number of fiction books =  $500 + 400 + 500 + 350 = 1750$   
 Required ratio =  $1500 : 1750 = 6 : 7$ .

**RRB NTPC Free Mock Tests**

**20 RRB NTPC Mocks-Tests Rs.149**

**Daily Free RRB Online Tesrt**

**RRB Group-D Previous Papers**

**RRB Free Videos (You Tube Channel)**

**RRB General Science Notes (Download Pdf)**

**RRB GK Material (Download Pdf)**

**RRB Group-D Free Mock Tests**

**20 RRB Group-D Mocks - Just Rs. 149**

**790+ Mocks - Just Rs. 194. Enroll To Cracku Pass**



**4.7 Rating**

**DOWNLOAD FREE RAILWAYS PREPARATION APP**