



RRB NTPC 27 April 2016 - Shift 2

All rights reserved. No part of this publication may be reproduced, distributed, or transmitted in any form or by any means, electronic, mechanical, photocopying, recording or otherwise, or stored in any retrieval system of any nature without the permission of cracku.in, application for which shall be made to support@cracku.in

RRB NTPC 27 April 2016 - Shift 2

Instructions

For the following questions answer them individually

Question 1

..... is not caused by airborne transmission.

- A Tuberculosis
- B Chickenpox
- C Measles
- D Hepatitis B

Answer: D

RRB NTPC Previous Papers (Download PDF)

Question 2

Read the statements and answer the question based on it.

Statements:

1. Some mammals are extinct and some are critically endangered.
2. All dinosaurs are extinct.
3. Some reptiles are critically endangered and some are already extinct.

Which option logically follows the given statements?

- A All dinosaurs are mammals.
- B There are no reptiles that are out of the danger of extinction.
- C No dinosaurs are critically endangered.
- D Some reptiles are dinosaurs who are extinct.

Answer: C

Explanation:

From the given statements it is clear that no dinosaurs are critically endangered.

Question 3

Allergy Screening Blood Test for human beings does not include

- A RAST
- B ELISA
- C IgE
- D Hemoglobin A1C

Answer: D

Question 4

..... is not a tributary of the river Ganges.

- A Yamuna

B Gomti

C Kosi

D Manas

Answer: D

RRB NTPC Free Mock Tests

Question 5

What is the number which when multiplied by 6 is 6 less than 60?

A 6

B 7

C 8

D 9

Answer: D

Explanation:

Let the number be x

$$60 - 6x = 6$$

$$6x = 54$$

$$x = 9.$$

Question 6

The area of a rectangle is 448 sq.m. If the length is more than the breadth by 12%, find the breadth.

A 14 m

B 16 m

C 18 m

D 20 m

Answer: D

Explanation:

Let the breadth be x then length = $\frac{112x}{100}$

Area = lb

$$448 = \frac{112x}{100} \times x = \frac{28x^2}{25}$$

$$x^2 = 16 \times 25$$

$$x = 20.$$

Question 7

Mirages are formed primarily due to _____ of light.

A Reflection

B Diffusion

- C Refraction
- D Scattering

Answer: C

RRB JE Previous Papers (Download Pdf)

Question 8

Resolution : Determination : : Consensus :

- A Difference
- B Unanimity
- C Decide
- D Outcome

Answer: B

Explanation:

Resolution and determination meaning is same to take decision or to to determine similarly Consensus and Unanimity means same agreement.

Instructions

Consider the information and answer the following questions based on it.

The following table represents the transport preferences of a certain number of people in three towns V, K and S.

	Cycle	Taxi	Rickshaw	Bus	Own car	Train
Town V	150	155	75	100	125	145
Town K	115	100	100	175	175	110
Town S	150	150	125	100	100	155

Question 9

What is the most preferred mode of transport?

- A Train
- B Bus
- C Cycle
- D Taxi

Answer: C

Explanation:

The most preferred mode of transport is cycle = $150 + 115 + 150 = 415$.

Question 10

The number of people wanting to travel by train and bus is how much more or less than those wanting to travel by taxi and own car?

- A 15 more
- B 15 less

C 20 more

D 20 less

Answer: D

Explanation:

Train + Bus = $(145 + 110 + 155) + (100 + 175 + 100) = 785$

Taxi + Car = $(155 + 100 + 150) + (125 + 175 + 100) = 805$

Required number = $805 - 785 = 20$ less.

RRB JE Free Mock Test

Question 11

The difference between people who prefer taxi to own car is?

A 5

B 10

C 15

D 20

Answer: A

Explanation:

Required difference = $(155+100+150) - (125+175+100) = 5$.

Instructions

For the following questions answer them individually

Question 12

Salt Satyagraha in Tamil Nadu was led by

A C. Rajagopalachari

B K. Kamaraj

C Potti Sriramulu

D C. Subramaniam

Answer: A

Question 13

An assertion (A) and a reason (R) are given below.

Assertion (A): Tungsten filament is used for making light bulbs.

Reason (R): Tungsten has a high melting point.

Choose the correct option.

A Both A and R are true and R is the correct explanation of A

B Both A and R are true, but R is not the correct explanation of A

C A is true, but R is false

D A is false, but R is true

Answer: A

Explanation:

Both A and R is true and R is the correct explanation of A because tungsten is used in bulb because its melting point is very higher than any other metal.

Daily Free RRB Online Test

Question 14

Esc key in a windows keyboard is not used to

- A Close a dialog-box
- B Run a selected command
- C Cancel a command
- D Close a selected drop down list

Answer: B

Question 15

Its. 3,105 is due to be divided among K, L and M in the proportion of $2/3 : 3/4 : 1/2$ respectively. How much will L get?

- A Rs. 1,080
- B Rs. 810
- C Rs. 1,215
- D Rs. 970

Answer: C

Explanation:

Given, Ratio = $\frac{2}{3} : \frac{3}{4} : \frac{1}{2}$

LCM = 12

$$= 3 \times 12 : 4 \times 12 : 2 \times 12$$

$$= 8 : 9 : 6$$

Ratio of K, L and M = 8 : 9 : 6

$$\text{Share of L} = \frac{9}{23} \times 3105 = 1215.$$

Question 16

If 'due to you' is coded as 'ba da Ca', 'he is due' as 'xe ba le' and 'is due to' as 'ba xe ca', then 'you' = ?

- A ba
- B ca
- C xe
- D da

Answer: D

Explanation:

due = ba, to = ca, you = da.

RRB Group-D Previous Papers

Question 17

If $a - b = 5$ and $a^2 + b^2 = 97$, $ab = ?$

- A 48
- B 32
- C 36
- D 72

Answer: C

Explanation:

$$a - b = 5$$

Squaring both side,

$$(a - b)^2 = 25$$

$$a^2 + b^2 - 2ab = 25$$

$$97 - 2ab = 25$$

$$2ab = 72$$

$$ab = 36.$$

Question 18

If **CAR = 22** and **BUS = 42**, then **TRAM = ?**

- A 62
- B 52
- C 72
- D 42

Answer: B

Explanation:

$$C = 3, A = 1, R = 18, \text{CAR} = 3 + 1 + 18 = 22$$

$$B = 2, U = 21, S = 19, \text{BUS} = 2 + 21 + 19 = 42$$

$$T = 20, R = 18, A = 1, M = 13 = \text{TRAM} = 20 + 18 + 1 + 13 = 52.$$

Question 19

N invested Rs. 20,000 in a business. Six months later, **C** joined him with Rs. 10,000. At the end of the year, the profit was Rs. 10,000. What should be the share of **N**?

- A Rs. 2,000
- B Rs. 4,000
- C Rs. 6,000
- D Rs. 8,000

Answer: D

Explanation:

Ratio of investment N and C respectively = $12 \times 20000 : 6 \times 10000 = 4 : 1$

Share of N = $\frac{4}{5} \times 10000 = 8000$.

RRB Free Videos (You Tube Channel)

Question 20

If WORK = 7935, ROCK = 3587 AND WART = 1945, which digit stands for T?

- A Either 9 or 1
- B Either 8 or 1
- C Either 4 or 5
- D Either 1 or 4

Answer: D

Explanation:

If we look at the common elements we get

R = 5, K and O = 7,3, W = 9, A and T = 1, 4

Hence, T stand for either 1 or 4.

Question 21

Yerwada Jail is in

- A Mumbai
- B Pune
- C Goa
- D Nagpur

Answer: B

Question 22

Which pair is not similar to the other three?

- A Bare : Dressed
- B Baffled : Informed
- C Counterfeit : Fake
- D Degrade : Exalt

Answer: C

Explanation:

The word of all the options are opposite of each other except option C.

Question 23

A grant for estimated expenditure made by Lok Sabha for part of a financial year pending voting is called

- A Cut motion
- B Appropriation
- C Prorogation
- D Vote on account

Answer: D

Question 24

..... is the capital of Mizoram

- A Shillong
- B Aizawl
- C Kavaratti
- D Imphal

Answer: B

Question 25

Statements followed by some conclusions are given below.

Statements:

1. We don't have the will to punish the guilty unless he is weak and poor.
2. The rich and well-connected get away with every wrong doing.

Conclusions:

- I. The rich people are able to escape punishment for wrong doing.
- II. If we will, justice will be same for all.

Find which of the given conclusions logically follows from the given statements.

- A Only conclusion I follows
- B Only conclusion II follows
- C Both I and II follow
- D Neither I nor II follows

Answer: C

Explanation:

According to the given statements both conclusion follows because justice will be same for all poor and rich and rich people get escaped after doing wrong.

10 RRB JE Mocks-Tests Rs.117

Question 26

India shares water border with countries.

- A One
- B Two

- C Five
- D Seven

Answer: D

Question 27

Find the LCM of 12, 16, 20 and 24.

- A 180
- B 220
- C 240
- D 260

Answer: C

Explanation:

Prime factorisation of 12, 16, 20 and 24.

$$12 = 2^2 \times 3$$

$$16 = 2^4$$

$$20 = 2^2 \times 5$$

$$24 = 2^3 \times 3$$

$$\text{L.C.M} = 2^4 \times 3 \times 5 = 240.$$

Question 28

Which of the following does not represent the things that make a 'Smart City', under the smart city campaign?

- A Affordable housing, especially for the poor.
- B Adequate water supply.
- C Free health and education.
- D Sustainable environment.

Answer: C

RRB General Science Notes (Download Pdf)

Question 29

A box of 20 items was bought for Rs. 6,400 after a discount of 20%. Find the cost of each item before discount.

- A Rs. 300
- B Rs. 350
- C Rs. 400
- D Rs. 450

Answer: C

Explanation:

C.P after discount = 6400

D = 20%

C.P before discount = $\frac{100}{80} \times 6400 = 8000$

C.P of each item before discount = $\frac{8000}{20} = 400$.

Question 30

Error : Blunder :: : Excellent

- A Acceptable
- B Excel
- C Unsatisfactory
- D Splendid

Answer: D

Explanation:

Error and blunder means mistake similarly splendid and excellent means impressive.

Question 31

In human body, vertebrae are part of

- A Intestine
- B Liver
- C Spinal cord
- D Brain

Answer: C

[RRB GK Material \(Download Pdf\)](#)

Question 32

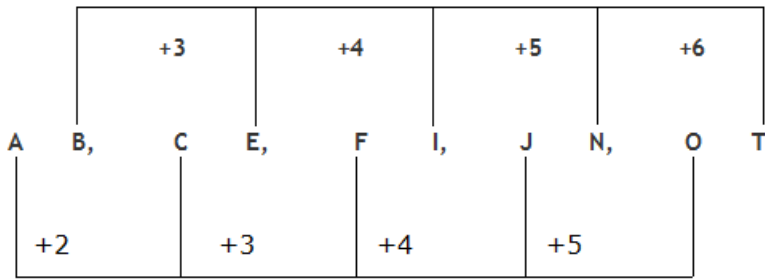
Find the missing (?) in the series.

AB, CE, FI, ?, OT

- A JM
- B GK
- C HO
- D JN

Answer: D

Explanation:



Question 33

..... are twin prime numbers.

- A (4, 9)
- B (2, 3)
- C (4, 6)
- D (3, 5)

Answer: D

Explanation:

Twin prime means the gap of two prime numbers is 2.

So, 3, 5 is twin prime numbers.

Question 34

X does 25% of a work in 20 days. Y joins X and they together finish the remaining work in 15 days. Y alone can do the whole work in days.

- A 30 days
- B 25 1/2 days
- C 26 2/3 days
- D 26 1/3 days

Answer: C

Explanation:

x completes 25% in 20 days

Then, x will complete 100% in 80 days

Now 75% of work is completed by x + y in 15 days

Then 100% of work will be completed by x + y in 20 days

So, y alone can complete the work = $\frac{1}{20} - \frac{1}{80} = \frac{3}{80} = \frac{80}{3} = 26\frac{2}{3}$.

Join Competitive Exam Updates Telegram Group

Question 35

$(4x - 7)^2 = ?$

- A $4x^2 - 56x + 49$
- B $4x^2 - 14x + 49$

C $16x^2 + 14x + 49$

D $16x^2 - 56x + 49$

Answer: D

Explanation:

$$(4x - 7)^2$$

$$16x^2 + 49 - 56x \quad ((a - b)^2 = a^2 + b^2 - 2ab)$$

Question 36

Fire : Burn :: Water : ?

A River

B H_2O

C Flood

D Dam

Answer: C

Explanation:

Fire harms by burning similarly water harms by flood.

Question 37

..... is not related to gases.

A Boyle's Law

B Joule's Law

C Avogadro's Law

D Charles's Law

Answer: B

RRB NTPC Previous Papers (Download PDF)

Question 38

The maturity value of a certain sum after two years at 20% p.a. interest compounded annually is Rs.14,400/-. Find the principal amount.

A Rs. 9,000

B Rs. 9,500

C Rs. 10,000

D Rs. 10,500

Answer: C

Explanation:

$$A = P \left(1 + \frac{R}{100}\right)^n$$

$$14400 = P \left(1 + \frac{20}{100}\right)^2$$

$$14400 = P \times \frac{120}{100} \times \frac{120}{100}$$

$$P = 10000.$$

Question 39

The smallest of the fractions among $5/8$, $3/4$, $13/16$, $7/12$ is

- A $5/8$
- B $3/4$
- C $13/16$
- D $7/12$

Answer: D

Explanation:

$$5/8 = 0.625$$

$$3/4 = 0.75$$

$$13/16 = 0.8125$$

$$7/12 = 0.583$$

Smallest fraction = $7/12$.

Or else convert all the denominators into a common denominator by taking LCM of all numbers.

Here the numbers are 8,4,16 and 12. So, LCM of these numbers = 48.

$$\text{So we will get } \frac{5}{8} \times \frac{6}{6}, \frac{3}{4} \times \frac{12}{12}, \frac{13}{16} \times \frac{3}{3}, \frac{7}{12} \times \frac{4}{4}$$

$$= \frac{30}{48}, \frac{36}{48}, \frac{39}{48}, \frac{28}{48}$$

Hence clearly the smallest fraction is the one having the smallest numerator.

Hence $7/12$ is the answer.

Question 40

If angles M and N measure 60° and 30° respectively. $(\sin M) \times (\cot N) = ?$

- A $1/2$
- B $\sqrt{3}/2$
- C $3/2$
- D 0

Answer: C

Explanation:

$$(\sin M) \times (\cot N)$$

$$(\sin 60^\circ) \times (\cot 30^\circ)$$

$$\frac{\sqrt{3}}{2} \times \sqrt{3} = \frac{3}{2}.$$

RRB NTPC Free Mock Tests

Question 41

The official journal of the Committee on Space Research (COSPAR) is

- A Astrophysics and Space
- B Space Science Reviews
- C Advances in Space Research
- D Cosmic Research

Answer: C

Question 42

The diagonals of 2 squares M & N are in the ratio 2:1. The ratio of their areas is

- A 1:2
- B 2:1
- C 1:4
- D 4:1

Answer: D

Explanation:

Ratio of the lengths of the respective diagonals of two squares M and N is 2:1.

Let the ratio be x

So, length of respective diagonals of two squares M and N is 2x and x

$$\text{Diagonal} = \sqrt{2}a$$

In square M

$$2x = \sqrt{2}a$$

$$a = \frac{2x}{\sqrt{2}}$$

$$\text{Area} = \left(\frac{2x}{\sqrt{2}}\right)^2 = \frac{4x^2}{2} = 2x^2$$

In square N

$$x = \sqrt{2}a$$

$$a = \frac{x}{\sqrt{2}}$$

$$\text{Area} = \left(\frac{x}{\sqrt{2}}\right)^2 = \frac{x^2}{2}$$

$$\text{Required ratio} = 2x^2 : \frac{x^2}{2} = 4 : 1.$$

Question 43

Which of the following is not a renewable source of energy?

- A Solar
- B Wind
- C Ocean waves
- D Coal

Answer: D

RRB JE Previous Papers (Download Pdf)

Question 44

A serial port can

- A only transfer information from a hard drive.
- B only transfer information to a hard drive.
- C transfer information both to and from a hard drive.
- D neither transfer information from nor to a hard drive.

Answer: C

Question 45

Find the greatest number which on dividing 391 and 318 leaves remainders 7 and 6 respectively.

- A 20
- B 23
- C 24
- D 32

Answer: C

Explanation:

Since on dividing 391 by the required no. the remainder is 7 then $391 - 7$ ie. 384 will be exactly divisible by the required no. Similarly, $318 - 6$ ie. 312 will be exactly divisible by the required no.

Now we will do prime factorisation of 384 and 312,

$$384 = 2^2 \times 3$$

$$312 = 2^3 \times 3 \times 13$$

$$\text{H.C.F} = 2^3 \times 3 = 24$$

Required number is 24.

Question 46

Find the odd one out in relation to using ATM and net-banking facilities.

- A Don't share your ATM card.
- B Don't share your PIN.
- C Don't change your PIN at regular intervals.
- D Don't share your login Id and password.

Answer: C

RRB JE Free Mock Test

Question 47

Read the following paragraph and answer the question based on it.

The ongoing progress in technologies continue to throw up fresh risks related to data privacy and security. There can be no true progress in technologies without such risks. The IT industries need to be equipped to handle such risks.

Which option relates best to the above statement?

- A True progress in technology involves some risks too.
- B IT industries are not equipped to handle such threats.
- C Progress must be free of risks and threats.
- D Data privacy and security is not important to the IT industries.

Answer: A

Question 48

The instrument used to examine a person's digestive tract is called

- A Oscilloscope
- B Microscope
- C Endoscope
- D Radiograph

Answer: C

Question 49

..... is not an example of refraction of light.

- A Twinkling effect of stars
- B Mirages
- C Lateral inversion
- D Bending of light while passing through a medium

Answer: C

Daily Free RRB Online Test

Question 50

X and Y are parents of four married sons, one married daughter and one unmarried daughter living in a joint family. Two of the sons have two daughters and one son each. The other two have two sons and one daughter each. How many male members are there in the family?

- A 9
- B 10
- C 11
- D 12

Answer: C

Explanation:

1. FATHER = 1 male
2. four married sons = 4 male
3. two of the sons have one son each = 2 male
4. the other two sons have two sons = 4 male

Total male = $1 + 4 + 2 + 4 = 11$ male.

Question 51

The cost of 15 kg of groundnuts and 4 kg of cashews is Rs. 7,000. The cost of 10 kg of cashews is equal to 25 kg of groundnuts. Find the cost of groundnut per kg.

- A Rs. 320
- B Rs. 700
- C Rs. 540
- D Rs. 280

Answer: D

Explanation:

Let 1 kg of groundnuts cost x and 1 kg of cashew cost y

$$10y = 25x$$

$$y = 2.5x \text{ -----I}$$

$$15x + 4y = 7000 \text{ ----II}$$

Putting I in II

$$15x + 10x = 7000$$

$$25x = 7000$$

$$x = \text{Rs } 280.$$

Question 52

If '+' means 'brother of', '×' means 'mother of', '—' means 'father of' and '÷' means 'son of' then which of the following means V is the nephew of W?

- A $V + U - W$
- B $V \div U + W$
- C $V \times W - U$
- D $V \div W - U$

Answer: B

Explanation:

$$V \div U + W$$

V is the son of U and U is the brother of W then V is the nephew of W.

RRB Group-D Previous Papers

Question 53

The average weight of 25 bags is 55 kg. The weight of one bag was misread as 65 instead of 56. Find the correct mean value.

- A 55.25
- B 55.36
- C 54.64
- D 55.65

Answer: C

Explanation:

Total weight of 25 bags = $25 \times 55 = 1375$

Total weight after correction = $1375 - 65 + 56 = 1366$

Correct mean value = $\frac{1366}{25} = 54.64$.

Question 54

If $w : 0.80 :: 9 : 6$, $w = ?$

- A 2.5
- B 1.1
- C 3.3
- D 1.2

Answer: D

Explanation:

$w : 0.80 :: 9 : 6$

$w \times 6 = 0.80 \times 9$

$w = \frac{0.80 \times 9}{6} = 1.2$

Question 55

Which Indian freedom fighter unfurled the flag known as Saptarishi at Stuttgart in Germany in 1907?

- A Madam Cama
- B Mahatma Gandhi
- C Dadabhai Naoroji
- D Lokmanya Tilak

Answer: A

RRB Free Videos (You Tube Channel)

Question 56

Which one is not the key objective of the Jan Aushadhi Campaign?

- A Make quality the hallmark of medicine availability.
- B Redefine the unit cost of treatment per person.
- C Develop a model which can be replicated only in India.

D To be adopted by the Private Sector also.

Answer: C

Question 57

..... was the Indian captain for 2016 ICC Women's World Cup Twenty20 cricket match.

A Rajeshwari Gayakwad

B Harmanpreet Kaur

C Deepti Sharma

D Mithali Raj

Answer: D

Instructions

Consider the following information and answer the questions based on it.

Out of 60 people in a colony, 10 speak only Bengali, 5 speak only Assamese, 10 speak both Hindi and Odia, 12 speak both Marathi and Hindi, 13 speak English, Tamil and Marathi, 5 speak both Assamese and Hindi and the remaining speak both Bengali and Hindi.

Question 58

In all, how many people speak Hindi?

A 22

B 27

C 32

D 45

Answer: C

Explanation:

People who speak only one language = $10 + 5 = 15$

People who speak more than two language = $60 - 15 = 45$

People who speak both bengali and hindi = $45 - (10 + 12 + 13 + 5) = 5$

People who speak hindi = $(10 + 12 + 5 + 5) = 32$.

20 RRB NTPC Mocks-Tests Rs.149

Question 59

How many people speak more than one language?

A 15

B 45

C 50

D 55

Answer: B

Explanation:

People who speak only one language = $10 + 5 = 15$

People who speak more than one languages = $60 - 15 = 45$.

Question 60

The ratio of people who speak Bengali to those who speak Marathi is

- A $15/32$
- B $1/2$
- C $3/4$
- D $3/5$

Answer: D

Explanation:

People who speak only one language = $10 + 5 = 15$

People who speak more than two languagea = $60 - 15 = 45$

People who speak both bengali and hindi = $45 - (10 + 12 + 13 + 5) = 5$

Required ratio = $(5 + 10) : (12 + 13) = 15 : 25 = 3 : 5$.

Instructions

For the following questions answer them individually

Question 61

In a farm, there are goats and peacocks. If the number of heads are 60 and the number of feet are 170, then the number of goats = ?

- A 18
- B 20
- C 23
- D 25

Answer: D

Explanation:

Let number of goats be x and peacocks be y

Each one have one head

So, $x + y = 60$ -----I

Goat have 4 leg and peacock have 2 leg

So, $4x + 2y = 170 = 2x + y = 85$ -----II

Equating I and II we get,

$x = 25$

Hence, number of goats is 25.

10 RRB JE Mocks-Tests Rs.117

Question 62

A train runs at 80 kmph for the first 40 km and the next 30 km at 60 kmph. Find the average speed.

- A 62 kmph
- B 64 kmph

C 65 kmph

D 70 kmph

Answer: D

Explanation:

Time taken to cover 40 km = $\frac{40}{80} = \frac{1}{2}$ hour

Time taken to cover 30 km = $\frac{30}{60} = \frac{1}{2}$ hour

Average speed = $\frac{\text{Total distance}}{\text{Total time}} = \frac{70}{1} = 70$ kmph .

Question 63

Objects float on water based on

A Newton's third law of motion

B Hooke's law

C Faraday's law

D Archimedes principle

Answer: D

Instructions

Consider the following information and answer questions based on it.

E, F, G, H and K visit a hospital on week days. Each one of them is a physician, surgeon, dentist, cardiologist, nephrologist but in the random order. Each visits the hospital only one day in the week and attends to their profession only.

1. The physician visits office every Monday.
2. E is the cardiologist who comes neither on Tuesday nor Thursday.
3. K is a surgeon and G is not the physician.
4. The person who visits the office on Thursday is not a nephrologist.
5. H works on a Tuesday and K works on the following day.

Question 64

Who is the nephrologist?

A E

B F

C G

D H

Answer: D

Explanation:

The physician visits office every Monday.

E is the cardiologist who comes neither on Tuesday nor Thursday.

K is a surgeon

H works on a Tuesday and K works on the following day.

So, we will get as follows:

Mon - Physician

Tue - - H

Wed - Surgeon - K

E neither comes on Tue or Thursday. Hence he will visit on Friday and is the cardiologist.

Mon - Physician

Tue - H

Wed - Surgeon - K

Thu

Fri - Cardiologist - E

The person who visits the office on Thursday is not a nephrologist. Hence he will visit on Tuesday as per the above table. The only profession left is dentist which will be on Thursday. Hence we will get.

Mon - Physician

Tue - Nephrologist - H

Wed - Surgeon - K

Thu - Dentist -

Fri - Cardiologist - E

The left over persons are G and F. G is not a physician. Hence F will be the physician and G will be the dentist. Hence the final arrangement is as follows:

Mon - Physician - F

Tue - Nephrologist - H

Wed - Surgeon - K

Thur - Dentist - G

Fri - Cardiologist - E

RRB General Science Notes (Download Pdf)

Question 65

Who is the physician?

A E

B F

C G

D H

Answer: B

Explanation:

The physician visits office every Monday.

E is the cardiologist who comes neither on Tuesday nor Thursday.

K is a surgeon

H works on a Tuesday and K works on the following day.

So, we will get as follows:

Mon - Physician

Tue - H

Wed - Surgeon - K

E neither comes on Tue or Thursday. Hence he will visit on Friday and is the cardiologist.

Mon - Physician

Tue - H

Wed - Surgeon - K

Thu

Fri - Cardiologist - E

The person who visits the office on Thursday is not a nephrologist. Hence he will visit on Tuesday as per the above table. The only profession left is dentist which will be on Thursday. Hence we will get

Mon - Physician

Tue - Nephrologist - H

Wed - Surgeon - K

Thu - Dentist -

Fri - Cardiologist - E

The left over persons are G and F. G is not a physician. Hence F will be the physician and G will be the dentist. Hence the final arrangement is as follows:

Mon - Physician - F

Tue - Nephrologist - H

Wed - Surgeon - K

Thur - Dentist - G

Fri - Cardiologist - E

Question 66

The cardiologist visits the office on

A Tuesday

B Wednesday

C Thursday

D Friday

Answer: D

Explanation:

The physician visits office every Monday.

E is the cardiologist who comes neither on Tuesday nor Thursday.

K is a surgeon

H works on a Tuesday and K works on the following day.

So, we will get as follows:

Mon - Physician

Tue - H

Wed - Surgeon - K

E neither comes on Tue or Thursday. Hence he will visit on Friday and is the cardiologist.

Mon - Physician

Tue - H

Wed - Surgeon - K

Thu

Fri - Cardiologist - E

The person who visits the office on Thursday is not a nephrologist. Hence he will visit on Tuesday as per the above table. The only profession left is dentist which will be on Thursday. Hence we will get.

Mon - Physician

Tue - Nephrologist - H

Wed - Surgeon - K

Thu - Dentist -

Fri - Cardiologist - E

The left over persons are G and F. G is not a physician. Hence F will be the physician and G will be the dentist. Hence the final arrangement is as follows:

Mon - Physician - F

Tue - Nephrologist - H

Wed - Surgeon - K

Thur - Dentist - G

Fri - Cardiologist - E

Instructions

For the following questions answer them individually

Question 67

A pipe can fill a tank in 50 minutes. If the tank has a leakage which alone is capable of emptying the tank in $2\frac{1}{2}$ hours, the tank will now be filled in

- A 1 hour
- B 1 hour 15 mins
- C 1 hour 25 mins
- D 1 hour 30 mins

Answer: B

Explanation:

Pipe can fill in 1 min = $\frac{60}{50} = \frac{6}{5}$

Pipe can empty in 1 min = $\frac{2}{5}$

Pipe and leakage 1 min work = $\frac{6}{5} - \frac{2}{5} = \frac{4}{5}$

So, tank will be filled in = $\frac{5}{4} \times 60 = 75 \text{ min} = 1 \text{ hour } 15 \text{ min s.}$

RRB GK Material (Download Pdf)

Question 68

How many full member teams were in ICC Cricket World Cup T20 - 2016 other than the host country?

- A Seven
- B Eight
- C Nine
- D Ten

Answer: C

Question 69

BROWN : BNORW :: SOUND : ?

- A SNOLTD
- B OSUDN
- C SUDNO
- D DNOSU

Answer: D

Explanation:

The letters of the word are arranged in alphabetical order.

BROWN : BNORW

Similarly, SOUND : DNOSU

Question 70

..... is known as a disease mostly caused by occupational health hazards.

- A Syphilis
- B Cirrhosis
- C Silicosis
- D Parkinson's

Answer: C

Join Competitive Exam Updates Telegram Group

Question 71

The speed of light in vacuum is estimated as _____ meters / second.

- A 3.00×10^8
- B 3.10×10^8
- C 3.12×10^8
- D 3.15×10^8

Answer: A

Question 72

Find the missing (?) in the series.

3, 5, 9, ?, 33, 65

- A 23
- B 21
- C 17
- D 15

Answer: C

Explanation:

$$2^1 + 1 = 2 + 1 = 3$$

$$2^2 + 1 = 4 + 1 = 5$$

$$2^3 + 1 = 8 + 1 = 9$$

$$2^4 + 1 = 16 + 1 = 17$$

$$2^5 + 1 = 32 + 1 = 33$$

$$2^6 + 1 = 64 + 1 = 65$$

Question 73

$$(0.2 \times 0.2 \times 0.2)(0.06 \times 0.06 \times 0.06) \div (0.12 \times 0.12 \times 0.12) = ?$$

A 0.008

B 0.001

C 0.002

D 0.006

Answer: B

Explanation:

$$(0.2 \times 0.2 \times 0.2)(0.06 \times 0.06 \times 0.06) \div (0.12 \times 0.12 \times 0.12) = ?$$

$$\frac{0.012 \times 0.012 \times 0.012}{0.12 \times 0.12 \times 0.12} = 0.001.$$

RRB NTPC Previous Papers (Download PDF)

Question 74

Salarjung Museum is located in

A Kolkata

B Ahmadabad

C Delhi

D Hyderabad

Answer: D

Question 75

Bollywood actress Priyanka Chopra won the Favourite Actress award at the People's Choice awards 2016, for her leading role in the American TV thriller series

A Secrets and Lies

B The Middle

C Quantico

D Mistresses

Answer: C

Question 76

Find the range of the data 9, 5, 9, 3, 4, 7, 8, 4, 8, 9, 5, 9.

- A 3
- B 5
- C 6
- D 4

Answer: C

Explanation:

Arrange it in increasing order = 3, 4, 4, 5, 5, 7, 8, 8, 9, 9, 9, 9

Range means difference between highest and lowest number = $9 - 3 = 6$.

RRB NTPC Free Mock Tests

Question 77

Name the first civilian president of Myanmar.

- A Htin Kyaw
- B Myint Swe
- C Henry Van Thio
- D Their Sein

Answer: A

Question 78

..... is used in yellow lamp street lights.

- A Neon
- B Nitrogen
- C Phosphorous
- D Sodium

Answer: D

Question 79

Curd contains mainly acid.

- A Benzoic
- B Fumaric
- C Lactic
- D Malic

Answer: C

Question 80

The cost price of 5 kg of wheat and 10 kg of sugar was at Rs. 70 and Rs. 80 per kg respectively. On selling, he gained 10% on wheat and 20% on sugar. What was the total sale price?

- A Rs. 1,375
- B Rs. 1,345
- C Rs. 1,400
- D Rs. 1,350

Answer: B

Explanation:

C.P of 5 kg wheat = $5 \times 70 = 350$

S.P of 5 kg of wheat at 10% profit = $350 \times \frac{110}{100} = 385$

C.P of 10 kg of lentils = $10 \times 80 = 800$

S.P of 10 kg of lentils at 20% profit = $800 \times \frac{120}{100} = 960$

Total S.P = $385 + 960 = \text{Rs } 1345.$

Question 81

The official language of Goa is

- A English
- B Portuguese
- C Konkani
- D Marathi

Answer: C

Question 82

M borrowed some money for 1 year at certain simple interest. But the interest rate was increased to 2% which amounted to Rs. 120. Find the principal amount.

- A Rs. 4,000
- B Rs. 5,000
- C Rs. 6,000
- D Rs. 7,000

Answer: C

Explanation:

Given, 2% more interest amounted to Rs.120.

$$SI \times 100 = 120 \times 100$$

$$\text{Principal} = \frac{R \times T}{100} = \frac{2 \times 1}{100} = \text{Rs.}6000$$

Question 83

If the radius (r) of a circle is increased by ' x ' units, what is the number of units by which the circumference of the circle is increased?

- A π
- B 2π
- C $2\pi r$
- D $2\pi x$

Answer: D

Explanation:

Circumference of circle = $2\pi r$

Circumference of circle when radius increased by $x = 2\pi (r + x) = 2\pi r + 2\pi x$

Hence, circumference of the circle increased by $2\pi x$ units.

Question 84

ISS stands for

- A International Space Station
- B International Space System
- C Indian space Studies
- D Inter-Space Spectroscopy

Answer: A

Question 85

..... is used in periscope.

- A Plane mirror
- B Prism
- C Concave lens
- D Convex lens

Answer: A

Explanation:

Periscope uses Plane Mirrors because light just strikes the mirror to reach viewer eye.

Daily Free RRB Online Test

Question 86

Statement followed by sonic conclusions are given below.

Statement: The search team believes that the plane debris recovered in 2016, near Mozambique was highly likely to be from ME-1370- Malaysian aircraft which disappeared after take-off in 2014.

Conclusions:

- I. The debris found near Mozambique definitely belonged to MH370 aircraft.
- II. The search team is mistaken about the findings.

Find which of the given conclusions logically follows from the given statements.

- A Only conclusion I follows
- B Only conclusion II follows
- C Both I and II follow
- D Neither I nor II follows

Answer: D

Explanation:

According to the given statements neither I or nor II conclusion follows.

Question 87

Most of the are formed by sand and silt deposited by rivers and sea waves.

- A Laterite and lateritic soils
- B Alluvial soils
- C Peaty and Marshy soils
- D Saline and alkaline soils

Answer: B

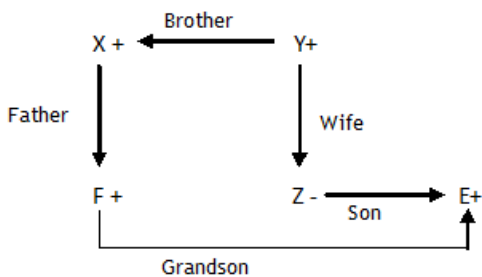
Question 88

X is the brother of Y. Z is the wife of Y. F is the father of X. E is son of Z. How is E related to F?

- A Grandson
- B Nephew
- C Brother
- D Son

Answer: A

Explanation:



RRB Group-D Previous Papers

Question 89

If LIGER is coded as GIRLE, then TEPAL will be coded as

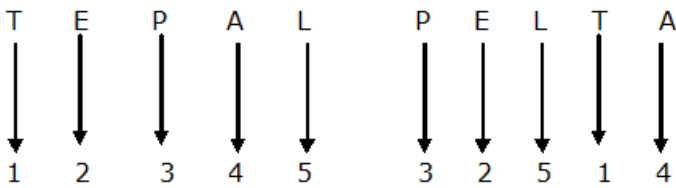
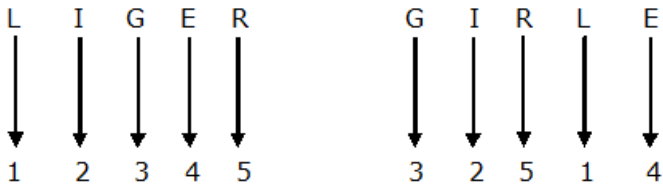
- A PETAL
- B PLATE

C PELTA

D PLEAT

Answer: C

Explanation:



Question 90

If $\sin \theta = 15/17$, then $\cot \theta = ?$

A 8/17

B 15/8

C 8/15

D 17/8

Answer: C

Explanation:

$$\sin \theta = 15/17 = \frac{P}{H}$$

$$B = \sqrt{289 - 225} = 8$$

$$\cot \theta = \frac{B}{P} = \frac{8}{15}$$

Question 91

There are 3 numbers. The 2nd number is 3 times the 1st. The 3rd is twice the 2nd. If their average is 70, find the smallest of the 3 numbers.

A 18

B 19

C 20

D 21

Answer: D

Explanation:

Let the 1st number be x

Then 2nd number = 3x and 3rd number = 6x

$$\text{Average} = \frac{x+3x+6x}{3}$$

$$70 = \frac{10x}{3}$$

$$10x = 210$$

$$\text{Smallest number} = x = 21$$

RRB Free Videos (You Tube Channel)

Question 92

The maximum interval between two sessions of state assembly can be

- A 3 months
- B 6 months
- C 9 months
- D 12 months

Answer: B

Question 93

If A means '-', C means '+', B means '÷', E means '×' then the value of $6 C 78 B 3 A 4 E 6 = ?$

- A 4
- B 6
- C 8
- D 10

Answer: C

Explanation:

$$6 C 78 B 3 A 4 E 6$$

$$6 + 78 \div 3 - 4 \times 6$$

$$6 + 26 - 24 = 8.$$

Question 94

The distance between the Sun and Earth is estimated to be

- A 15.96×10^7 km
- B 14.96×10^7 km
- C 12.96×10^7 km
- D 11.96×10^7 km

Answer: B

20 RRB NTPC Mocks-Tests Rs.149

Question 95

Which of the following is not true in regard to exchange rate of Indian Rupee?

- A Mainly, its price is in terms of US Dollar.
- B It is decided by Reserve Bank of India.
- C It is published by Reserve Bank of India.
- D It is decided by market forces.

Answer: B

Question 96

The age difference between M and R is the same as that between P and M. M is elder to P but younger to R. If the sum of the ages of R and P is 66, how old is M?

- A 28
- B 30
- C 33
- D 36

Answer: C

Explanation:

$$M - R = P - M$$

$$2M = P + R = 66$$

$$M = 33 \text{ years.}$$

Question 97

Rearrange the jumbled letters to make a meaningful word and then select the one which is different.

- A OLEMN
- B PEALP
- C OGREAN
- D OTTOPA

Answer: D

Explanation:

A = LEMON, B = APPLE, C = ORANGE, D = POTATO

Potato is vegetable so it is different from others.

10 RRB JE Mocks-Tests Rs.117

Question 98

Which one of the following names is associated with golf?

- A Gurmeet Singh
- B H.S. Prannoy

C S.S.P. Chavaasia

D Chetan Anand

Answer: C

Question 99

A man starts walking at 6.30a.m. and wants to cover a distance of 30km. His initial speed is 6 kmph and after covering three-fifth distance, he reduces his speed by 2 kmph. At what time will he complete his walk?

A 11.00 am

B 12.30 pm

C 11.30 pm

D 12.00 pm

Answer: B

Explanation:

Distance covered at 6 kmph = $30 \times \frac{3}{5} = 18$ km

Time taken to cover 18 km = $\frac{18}{6} = 3$ hours

Distance covered at 4 kmph = $30 - 18 = 12$ km

Time taken to cover 12 km = $\frac{12}{4} = 3$ hours

Required time = $3 + 3 = 6$ hours

He will complete his journey at 12.30 PM.

Question 100

Rajaji National Park is in

A Tamil Nadu

B Uttarakhand

C Karnataka

D Kerala

Answer: B

[RRB General Science Notes \(Download Pdf\)](#)

[RRB NTPC Previous Papers \(Download PDF\)](#)

[RRB NTPC Free Mock Tests](#)

[RRB JE Previous Papers \(Download Pdf\)](#)

[RRB JE Free Mock Test](#)

Daily Free RRB Online Tesrt

RRB Group-D Previous Papers

RRB Free Videos (You Tube Channel)

20 RRB NTPC Mocks-Tests Rs.149

10 RRB JE Mocks-Tests Rs.117

RRB General Science Notes (Download Pdf)

RRB GK Material (Download Pdf)

Join Competitive Exam Updates Telegram Group