



RRB NTPC 19 April 2016 - Shift 2

All rights reserved. No part of this publication may be reproduced, distributed, or transmitted in any form or by any means, electronic, mechanical, photocopying, recording or otherwise, or stored in any retrieval system of any nature without the permission of cracku.in, application for which shall be made to support@cracku.in

RRB NTPC 19 April 2016 - Shift 2

Instructions

For the following questions answer them individually

Question 1

If 'how are you' is written as 'ne ki se' and 'where are you' as 'ne bl se' and 'you were here' as 'ke ne jo', then 'how you here' is written as

- A ke ki ne
- B se ne ki
- C ne bl ke
- D bl se ne

Answer: A

RRB NTPC Previous Papers (Download PDF)

Question 2

..... is not a type of heat transfer.

- A Diffusion
- B Reflection
- C Convection
- D Radiation

Answer: B

Question 3

International Women's day is celebrated on March every year.

- A 6th
- B 7th
- C 8th
- D 9th

Answer: C

Question 4

Replace # sign with the mathematical operators '+', '÷', '-' or '=' to get a balanced equation out of $186 \# 31 \# 36 \# 30$.

- A $+ \div =$
- B $- = +$
- C $- + \div$
- D $\div = -$

Answer: D

Explanation:

186 # 31 # 36 # 30

Replacing # with mathematical operator signs of these triangles

$$186 \div 31 = 36 - 30$$

$$6 = 6$$

RRB NTPC Free Mock Tests

Question 5

Triangle PQR is such that PQ = 9cm, QR = 6cm, PR = 7.5cm and triangle PQR is similar to triangle XYL. If XY= 18cm, Find the value of YZ

- A 15 cm
- B 18 cm
- C 12 cm
- D 9 cm

Answer: C

Explanation:

Since the triangles are similar

taking the ratio of corresponding sides of these triangles

$$\frac{PQ}{XY} = \frac{QR}{YZ}$$

$$\frac{9}{18} = \frac{6}{YZ}$$

$$YZ=12\text{cm}$$

Question 6

..... is used as a stabilizer in ice cream.

- A Gelatin
- B Sugar
- C Milk
- D Strawberry

Answer: A

Question 7

The major ingredient of sweetened soft drink is

- A Carbonated water
- B Hydrochloric acid
- C Phosphoric acid
- D Caffeine

Answer: A

RRB JE Previous Papers (Download Pdf)

Question 8

Rs. 10000 is being compounded at 20% per annum. Calculate the amount after 2 years if rate of interest is charged half yearly.

- A Rs. 10041
- B Rs. 14641
- C Rs. 12000
- D Rs. 13660

Answer: B

Explanation:

$$\text{Amount} = P \left(1 + \frac{r}{n} \right)^m$$

here $p = 10000$

$r = 20\%$

$n = 2$

$t = 2$

$$A = 10000 \left(1 + \frac{20}{200} \right)^4$$

$$A = 10000(1.1)^4$$

$$A = 10000 \times (1.4641)$$

$$A = (14641)$$

Question 9

Pakistani film industry is known as

- A Pollywood
- B Lollywood
- C Kollywood
- D Mollywood

Answer: B

Question 10

The mean of a distribution is 18 and the standard deviation is 4.5. What is the value of the coefficient of variation?

- A 50%
- B 25%
- C 100%
- D 75%

Answer: B

Explanation:

$$\text{coefficient of variation} = \frac{SD}{Mean} \times 100$$

$$= \frac{4.5}{18} \times 100$$

$$= 25\%$$

RRB JE Free Mock Test

Question 11

If $a^3 + b^3 + c^3 - 3abc = 0$, then find the value of $(a^2/bc + b^2/ac - 3)$.

A $-c^2/ab$

B $-c^2/bc$

C $-c^3/ba$

D $-c/a$

Answer: A

Question 12

Pointing to a woman, I said that her brother's only son is the brother of my wife. How is the woman related to me?

A Father-in-law's sister

B Mother-in-law

C Sister-in-law

D Sister

Answer: A

Question 13

Which of the following states does not share a border with Myanmar?

A Assam

B Mizoram

C Nagaland

D Manipur

Answer: A

Daily Free RRB Online Test

Question 14

Geographical indication (GI) is related to having unique geographic origin and evolution over centuries.

A Hills

B Mountain ranges

C Plains

D Products

Answer: D

Question 15

In March 2016 Election Commission of India declared assembly elections in states scheduled for April May 2016.

- A 3
- B 7
- C 5
- D 6

Answer: C

Question 16

10 persons can do a job in X days. If 20 persons with twice the efficiency can do the same job in 5 days, then find the value of X?

- A 40
- B 15
- C 20
- D 30

Answer: C

RRB Group-D Previous Papers

Question 17

P can do a piece of work in 60 days & Q can do the same work in 50 days. Find the ratio of working efficiencies of P to Q.

- A $1/3$
- B $6/5$
- C $5/6$
- D $4/5$

Answer: C

Question 18

A kite is flying at a height of 50m. If the length of string is 100m then the inclination of string to the horizontal ground in degree measures is:

- A 90
- B 45
- C 60
- D 30

Answer: D

Question 19

Retinol is mainly related to

- A Vitamin A
- B Vitamin B
- C Vitamin C
- D Vitamin D

Answer: A

RRB Free Videos (You Tube Channel)

Question 20

A lady said that father of Rahul's father is my father. How is the lady related to Rahul?

- A Mother
- B Paternal aunt
- C Sister
- D Niece

Answer: B

Question 21

Bollywood actor has been selected for the 47th Dadasaheb Phalke Award for 2015.

- A Dilip Kumar
- B Mauoj Kumar
- C Rajinikanth
- D Anupam Kher

Answer: B

Question 22

Read the given statement carefully and answer the question.

A group of people getting together casually without prior planning and in a relaxed manner is called informal gathering.

Which of the following situations better illustrates the above statement?

- A A group celebrates every month on salary day.
- B Invitees gather on the occasion of wedding reception.
- C Soon after the release of mark list, top 10 rankers gather to greet each other.
- D People gather to witness beating retreat at Wagah border in Amritsar.

Answer: C

20 RRB NTPC Mocks-Tests Rs.149

Question 23

Sleep apnea is related to while sleeping.

- A Walking
- B Talking
- C Snoring
- D Smiling

Answer: C

Question 24

Boiling point of water is

- A 210°F
- B 212°F
- C 214°F
- D 208°F

Answer: B

Question 25

Circumvent : Bypass :: Comprehensible :

- A Understandable
- B Unclear
- C Grasping
- D Apprehend

Answer: A

10 RRB JE Mocks-Tests Rs.117

Question 26

Find the sum of first 8 odd prime numbers.

- A 77
- B 98
- C 75
- D 100

Answer: B

Explanation:

The sum of first 8 odd prime numbers are=

$$=3+5+7+11+13+17+19+23$$

$$=98$$

Question 27

If $a=2b/3$, $b=2c/3$, and $c=2d/3$, then find the ratio of b and d :

- A 8/9
- B 4/9
- C 4/3
- D 5/27

Answer: B

Explanation:

Given :

$$a = 2b/3 , b = 2c/3, \text{ and } c = 2d/3$$

Need to find :

ratio of b and d

Hence $a = 2b/3$ is useless for us

we just need to use

$$b = 2c/3, \text{ and } c = 2d/3$$

Let put value of $c = 2d/3$ in $b = 2c/3$

$$\text{then } b = 2 (2d/3) / 3$$

$$\Rightarrow b = 4d/9$$

$$\Rightarrow b/d = 4/9$$

$$\Rightarrow b : d :: 4 : 9$$

Ratio of b & d = 4 : 9

Question 28

Windows 10 is

- A an utility software.
- B a browser.
- C an application software.
- D an operating system.

Answer: D

RRB General Science Notes (Download Pdf)

Question 29

One of the techniques used for desalination of sea water is

- A Filtration
- B Distillation

- C Evaporation
- D Condensation

Answer: B

Instructions

Consider the information and answer the following questions based on it.

The following table represents the number of fans of stars MSD, VK, RD and SR in different areas of a town.

	Area 1	Area 2	Area 3	Area 4
VK	2500	1700	2300	5000
MSD	3000	3000	4000	3100
RD	1500	3500	4500	5200
SR	1500	4000	3500	2500

Question 30

What is the difference between the numbers of fans of Area 2 to that of Area 3?

- A Area 2 has 2200 more fans
- B Area 2 has 2100 less fans
- C Area 2 has 2100 more fans
- D Area 2 has 2200 less fans

Answer: B

Explanation:

Total fans of Area 2=1700+3000+3500+4000=12200

Total fans of Area 3=2300+4000+4500+3000=14300

difference=14300-12200=2100

Question 31

What is the difference between the total number of fans of SR and MSD?

- A 1500
- B 1600
- C 3000
- D 3200

Answer: B

Explanation:

total number of fans of SR=1500+4000+3500+2500=11500

total number of fans of MSD=3000+3000+4000+3100=13100

Differenc=13100-11500=1600

[RRB GK Material \(Download Pdf\)](#)

Question 32

In all, who has the highest number of fans?

- A VK
- B MSD
- C RD
- D SR

Answer: C

Instructions

For the following questions answer them individually

Question 33

Echocardiogram is more closely related to

- A Doppler effect
- B Zeeman effect
- C Photoelectric effect
- D Magnetic effect

Answer: A

Question 34

Statements followed by some conclusions are given below.

Statements:

1. Compulsive online shopping has become a common behavior among youngsters.
2. This is evident from most of those seeking counseling for de-addiction.

Conclusions:

- I. All youngsters are addicted online shopping.
- II. All youngsters seek counseling for de-addiction.

Find which of the given conclusions logically follows from the given statements.

- A Only conclusion I follows
- B Only conclusion II follows
- C Both I and II follow
- D Neither I nor II follows

Answer: D

Join Competitive Exam Updates Telegram Group

Question 35

In a mixture 25 litres, the ratio of milk and water is 4:1. How many litres of milk must be added to make the ratio 16:1?

- A 21
- B 25
- C 60
- D 36

Answer: C

Explanation:

Total Mixture=25 liters

and ratio of milk to water =4:1

$$4x+x=25$$

$$5x=25$$

$$x=5$$

so 20 liters of milk and 5 liter of water

Now ratio=16:1

Let y liters of milk be added to the old mixture

$$\frac{20+y}{5} = \frac{16}{1}$$

$$20+y=80$$

$$y=60$$

Question 36

World Wetland day is celebrated every year on February.

A 2nd

B 3rd

C 4th

D 5th

Answer: A

Question 37

Night blindness : Sight : : : Speech

A Talk

B Stutter

C Speak

D Lecture

Answer: B

RRB NTPC Previous Papers (Download PDF)

Question 38

Davis Cup 2015 final was held in

A UK

B Australia

C Belgium

D Argentina

Answer: C

Question 39

Mohan starts to calculate sum of all odd natural number less than 83. What result does he get?

- A 1456
- B 1681
- C 1437
- D 1671

Answer: B

Question 40

'Start' menu in a standard personal computer is

- A Part of the hardware
- B A set of options and commands
- C Nothing but the status bar
- D Network related

Answer: B

RRB NTPC Free Mock Tests

Question 41

If the mathematical operator ' \div ' means ' \times ', ' $+$ ' means ' $-$ ', ' \times ' means ' $+$ ' and ' $-$ ' means ' \div ', then $24 + 48 - 12 \times 4 \div 2 = ?$

- A 6
- B -6
- C 16
- D 28

Answer: D

Question 42

Avalanche : Ice :: Volcano :

- A Lava
- B Sand
- C Heat
- D Earth

Answer: A

Question 43

The process of reducing the milk fat globules size to allow them to stay evenly distributed in milk is called

- A Standardization
- B Pasteurization
- C Homogenization
- D Fortification

Answer: C

RRB JE Previous Papers (Download Pdf)

Question 44

..... was the 3rd Mughal Emperor of India.

- A Humayun
- B Akbar
- C Aurangzeb
- D Jahangir

Answer: B

Question 45

Velocity of a car does not depend on

- A Speedometer
- B Change in direction
- C Change in speed
- D Change in acceleration

Answer: A

Question 46

The Colosseum, known as the Flavian Amphitheatre, is located in

- A Venice
- B Rome
- C Milan
- D Vatican City

Answer: B

RRB JE Free Mock Test

Question 47

Mukesh got series of discount 30%, 25%, 15% on his shirt. Find out the single equivalent discount.

- A 52.34%
- B 38.35%
- C 55.38%
- D 57.38%

Answer: C

Question 48

In March 2016 National Green Tribunal imposed an initial compensation of Rs. 5 Crore on for tampering with the Yamuna river's flood plains.

- A Kalki Avatar Foundation
- B Art of Living Foundation
- C Emissaries of Divine Light
- D Sant Nirankari Mission

Answer: B

Question 49

The ancient Indian legal document 'Manusmriti' was written in

- A Tamil
- B Hindi
- C Sanskrit
- D Bengali

Answer: C

Daily Free RRB Online Test

Question 50

Find the missing (?) in the series:

...., FHJ, KMO, PRT, ?

- A UVZ
- B UXZ
- C UVW
- D UWY

Answer: D

Question 51

India won the 2016 Asia Cup T20 held in Bangladesh by wickets.

- A 7
- B 6
- C 5
- D 8

Answer: D

Question 52

Kakori train robbery was organized by the in 1925.

- A Swaraj Party
- B Indian National Congress
- C Anushilan Samiti
- D Hindustan Republican Association

Answer: D

RRB Group-D Previous Papers

Question 53

The mean of 20 observations is 19. One more observation is included and the new mean becomes 20. The 21st observation is;

- A 20
- B 30
- C 40
- D 42

Answer: C

Question 54

Golconda Fort was built during

- A Vijayanagara Empire
- B Qutb Shahi dynasty
- C Satavahana dynasty
- D Hoysala Dynasty

Answer: B

Question 55

Provincial Autonomy was provided by

- A The Government of India Act 1935
- B The Montague-Chelmsford Report
- C The Government of India Act 1919
- D The Indian Independence Act 1947

Answer: A

RRB Free Videos (You Tube Channel)

Question 56

Who is number 1 in the Forbes 2016 ranking of World's billionaires?

- A Warren Buffet
- B Amancio Ortega
- C Bill Gates
- D Carlos Slim Helu

Answer: C

Question 57

In a factory, 60 workers can stitch 120 m of clothes in 7 days, what length of clothes can be stitched by 70 workers in 5 days?

- A 100 m
- B 90 m
- C 85 m
- D 110 m

Answer: A

Question 58

Which one reveals, more appropriately, functioning of the heart?

- A Electrocardiogram
- B Echocardiogram
- C Stethoscope
- D Lipid profile

Answer: B

20 RRB NTPC Mocks-Tests Rs.149

Question 59

Given that $(a^2 + b^2) = 60$, then find the value of $(a + b)^2 + (a - b)^2$.

- A 90
- B 120
- C 140
- D 150

Answer: B

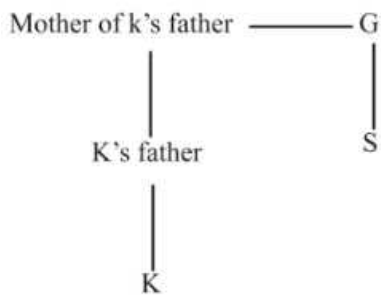
Question 60

Mother of K's father is the sister of G. S is the daughter of G. How is S related to K's father?

- A Cousin sister
- B Mother
- C Paternal Aunt
- D Cannot be determined.

Answer: A

Explanation:



Mother of K's father is the sister of G and S is daughter of G. \Rightarrow S is the cousin sister of K's father.

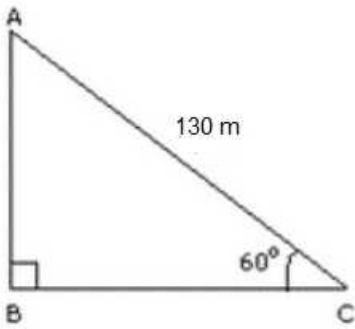
Question 61

A balloon is connected to a meteorological station by a cable of length 130 m. inclined at 60° to the horizontal. Find the height of the balloon from the ground. Assume that there is no slack in cable.

- A 110.32m
- B 173 m
- C 163.28 m
- D 112.18 m

Answer: D

Explanation:



Let A be the position of the balloon.

In rt. $\triangle ABC$,

$$\sin 60^\circ = AB/AC$$

$$AB = 130 \sin 60^\circ$$

$$AB = 130 \times \sqrt{3}/2$$

$$= 130 \times 1.73/2$$

$$= 112.18 \text{ m}$$

Therefore the height of the balloon from the ground is 112.18 m

10 RRB JE Mocks-Tests Rs.117

Question 62

Orbital period of Halley's comet is years.

- A 25
- B 50
- C 75
- D 100

Answer: C

Question 63

Find the greatest number which on dividing 1580 and 3800 leaves remainders 8 and 1 respectively.

- A 262
- B 131
- C 65.5
- D 393

Answer: B

Explanation:

Remainder is 8 and 1 respectively.

So, $1580-8 = 1572$ & $3800-1 = 3799$ will be completely divisible by the required number. So We require the HCF(1572 and 3799)

$$\text{HCF}(1572 \text{ and } 3799) = 131$$

Question 64

Which one is not the cause of kidney stone formation?

- A Drinking more water

- B Diabetic mellitus
- C Taking nuts rich in oxalate
- D Eating lot of stone forming foods

Answer: A

RRB General Science Notes (Download Pdf)

Question 65

If the angles of a triangle are in the ratio of 2:3:5, then find the ratio of the greatest angle to the smallest angle.

- A 7:2
- B 5:2
- C 5:3
- D 3:5

Answer: B

Explanation:

Let the angles be $2x$, $3x$, $5x$

$2x+3x+5x=180$. (sum of angles of triangle is 180°)

$12x=180$

$x=15$

so, largest angle is 75°

Smallest angle 30°

Ratio= $75:30$

= $5:2$

Question 66

The annual financial statement prepared under article 112 of the Indian Constitution is called

- A Public account
- B Consolidated account
- C Budget
- D Revenue account

Answer: C

Question 67

Rain travels $\frac{4}{9}^{th}$ of the total journey by bus, $\frac{5}{18}^{th}$ by rail and the remaining 101km on foot. Find the distance of total journey.

- A 42 km
- B 90 km
- C 36 km

D 18 km

Answer: C

RRB GK Material (Download Pdf)

Question 68

If $a = 5, b = 4, c = 8$ then find the value of $(a^3 + b^3 + c^3 - 3abc)/(ab + bc + ca - a^2 - b^2 - c^2)$.

A 15

B 17

C -17

D -15

Answer: C

Explanation:

$$(a^3 + b^3 + c^3 - 3abc)/(ab + bc + ca - a^2 - b^2 - c^2)$$

Given

$$a = 5, b = 4, c = 8$$

$$(5^3 + 4^3 + 8^3 - 3 \times 5 \times 4 \times 8)/(5 \times 4 + 4 \times 8 + 8 \times 5 - 5^2 - 4^2 - 8^2)$$

$$(125 + 64 + 512 - 480)/(20 + 32 + 40 - 25 - 16 - 64)$$

$$(221)/(-13)$$

$$-17$$

Question 69

The average age of a batch of 19 members is 24 years. If the age of the faculty be included, then the average increases by 4 months. What is the age of the faculty?

A 35 years

B 30 years

C 37 years 4 months

D 32 years 8 months

Answer: B

Question 70

Courtroom : Judge :: Stadium :

A Landlord

B Organizer

C Referee

D Promoter

Answer: C

Join Competitive Exam Updates Telegram Group

Question 71

The tennis star, was provisionally suspended after testing positive for banned drugs during Australian open 2016.

- A Maria Sharapova
- B Serena Williams
- C Ana Ivanovic
- D Andy Murray

Answer: A

Instructions

Consider the following information and answer the questions based on it.

Out of the 75 birders, 15 wanted to see only sunbird, 10 wanted to see only flycatcher, 12 wanted to see both sunbird and nuthatch, 15 wanted to see only bee-eater, 13 wanted to see both sunbird and bee-eater, 5 wanted to see both flycatcher and nuthatch and the remaining wanted to see only nuthatch.

Question 72

The difference between the birders who want to see sunbird and those who want to see flycatcher is

- A 12
- B 25
- C 30
- D 15

Answer: B

Question 73

How many birders wanted to see only one bird?

- A 30
- B 40
- C 45
- D 50

Answer: C

RRB NTPC Previous Papers (Download PDF)

Question 74

The ratio of birders who like nuthatch to those who like bee-eaters is

- A 11/14
- B 10/7
- C 11/20

D 30/8

Answer: A

Instructions

For the following questions answer them individually

Question 75

Find the missing (?) in the series:

9, 4, 16, 6, 36, 9, 81, ?

A 12

B 10

C 11

D 13

Answer: D

Question 76

Charles Wilkinson's English version of Bhagavad Gita was first published in the year

A 1685

B 1725

C 1785

D 1885

Answer: C

RRB NTPC Free Mock Tests

Question 77

A sum of money of Rs. 1000 is lent out in two parts in such a way that the interest on one part at 10% per annum for 5 years is equal to another at 5% for 10 years. Calculate the sum lent out at 5%.

A Rs. 500

B Rs. 800

C Rs. 1000

D Rs. 1200

Answer: A

Explanation:

Let one part of money is 'x' then 2nd part is 1000-x

Interest on first part is $I_1 = \frac{P \times R \times T}{100} = \frac{x \times 10 \times 5}{100}$

$$I_1 = 0.5x$$

Similarly for 2nd part

Interest on 2nd part is $I_2 = \frac{P \times R \times T}{100} = \frac{1000-x \times 5 \times 10}{100}$

$$I_2 = \frac{1000-x}{2}$$

Given $I_1 = I_2$

$$0.5x = \frac{1000-x}{2}$$

$$x + x = 1000$$

$$x = 500 \quad \text{1st part}$$

$$1000 - 500 = 500 \quad \text{2nd part}$$

Question 78

In a certain code, 329 means 'you ore bad', 419 means 'bad ls good' and 195 means 'nothing is bad', represents 'good'.

- A 9
- B 4
- C 1
- D 3

Answer: B

Explanation:

329 means 'you ore bad'

419 means 'bad ls good'

195 means 'nothing is bad'

9=bad

1=ls

good=4

Question 79

Any online 'demo' is

- A An interactive presentation
- B A non-interactive presentation
- C Not a sequential presentation
- D An active user interface

Answer: B

RRB JE Previous Papers (Download Pdf)

Question 80

In a certain code, 324 means 'are you alright', 783 means 'you come home' and 9271 means 'we are at home'. Which digit represents 'come'?

- A 8
- B 9
- C 7
- D 3

Answer: A

Question 81

The game of football is also referred to as

- A Rugby
- B Poker
- C Soccer
- D Ping-Pong

Answer: C

Question 82

Rearrange the jumbled letters to make meaningful words and then select the one which is different.

- A OMESU
- B ROTINOM
- C RETIAW
- D RETNIRP

Answer: C

Explanation:

- a) OMESU -> MOUSE
- b) ROTINOM -> MONITOR
- c) RETIAW -> WAITER
- d) RETNTRP -> PRINTER

Other than (c), all the others are related to computer.

RRB JE Free Mock Test

Question 83

Find the odd pair out.

- A Nitrogen : Air
- B Hydrogen : Water
- C Uranium : Coins
- D Sulphur : Match stick

Answer: C

Explanation:

coins are not made of uranium

Question 84

Neeraj purchased a few shirts for his shop at cost prices ranging from Rs. 400 to Rs. 550 and sold at prices ranging from Rs. 450 to Rs. 650. What is the maximum profit that might be made in selling 10 shirts?

- A Rs. 2800
- B Rs. 2500
- C Rs. 2400
- D Rs. 2000

Answer: B

Explanation:

Cost price ranges from Rs. 400 to Rs. 550

Selling price ranges from Rs. 450 to Rs. 650

Now for maximum profit, cost price should be minimum & selling should be maximum

CP=400 {1 shirt}

For 10 shirts CP=4000

SP=650 {1 shirt}

For 10 shirts SP=6500

Profit=6500-4000=2500

Question 85

As per historical astronomy there are zodiac divisions.

- A 9
- B 10
- C 11
- D 12

Answer: D

Daily Free RRB Online Test

Question 86

How much is the maximum % discount that Sheela can offer to her customer on her Marked Price so that she sells her product at no profit or loss, if she had already marked her product by 25% more than the cost price?

- A 25%
- B 20%
- C 30%
- D 40%

Answer: B

Question 87

If the standard deviation of a population is 10, what would be the population variance?

- A 100

- B 30
- C 5
- D 20

Answer: A

Question 88

An assertion (A) and a reason (R) are given below.

Assertion (A): Electric wires are generally made of copper.

Reason (R): Copper is a good conductor.

Choose the correct option.

- A Both A and R are true and R is the correct explanation of A
- B Both A and R are true, but R is not the correct explanation of A
- C A is true, but R is false
- D A is false, but R is true

Answer: A

RRB Group-D Previous Papers

Question 89

Ram is thrice as fast as Mohan and Mohan is twice as fast as Sohan. The distance covered by Sohan in 42 minutes will be covered by Mohan in :

- A 18 minutes
- B 20 minutes
- C 21 minutes
- D 22 minutes

Answer: B

Question 90

An angle is 60° more than one fifth of its complement. Find the smaller angle in degrees.

- A 65°
- B 35°
- C 25°
- D 45°

Answer: C

Instructions

Consider the following information and answer questions based on it.

Seven bottles colored - brown, blue, black, violet, white, indigo and purple are kept in a row, in random order, from left to right such that the —

1. White and purple bottles are not at either extremes.

2. Brown bottle is to the immediate right of violet bottle and to the immediate left of the white bottle.
3. White, violet and brown bottles are not at the center.
4. Black bottle is to the immediate left of purple bottle.
5. Blue bottle is neither second last nor at either extremes.

Question 91

Bottles at the extreme right and left ends are

- A Violet and purple
- B Indigo and violet
- C Black and indigo
- D Black and violet

Answer: B

Explanation:

1. White and purple bottles are not at either extremes.
2. Brown bottle is to the immediate right of violet bottle and to the immediate left of the white bottle.
3. White, violet and brown bottles are not at the center.

VOILET	BROWN	WHITE				
--------	-------	-------	--	--	--	--

purple bottles are not at either extremes

4. Black bottle is to the immediate left of purple bottle.
5. Blue bottle is nei ther second last nor at either extremes.

VOILET	BROWN	WHITE	BLUE	BLACK	PURPLE	INDIGO
--------	-------	-------	------	-------	--------	--------

Indigo and violet

RRB Free Videos (You Tube Channel)

Question 92

Which bottle is at the center of the row?

- A Black bottle
- B Indigo bottle
- C Blue bottle
- D Purple bottle

Answer: C

Question 93

Which of the following statement is correct?

- A Indigo bottle is to the immediate left of the purple bottle.
- B Blue is to the immediate right of the purple bottle.

- C There are at least five bottles between brown and black.
- D Black bottle is to the immediate right of the blue bottle.

Answer: D

Instructions

For the following questions answer them individually

Question 94

Statements followed by some conclusions are given below.

Statements:

1. Demand and supply determine the prices of goods and services.
2. When there are too many buyers, prices are pushed up and too many sellers push down prices.

Conclusions:

- I. Buyers and sellers determine the prices.
- II. Price discovery is market driven.

Find which of the given conclusions logically follows from the given statements

- A Only conclusion I follows
- B Only conclusion II follows
- C Both I and II follow
- D Neither I nor II follows

Answer: C

20 RRB NTPC Mocks-Tests Rs.149

Question 95

Find the value of $6 + 11 + 16 + 21 + \dots + 71$.

- A 539
- B 561
- C 661
- D 639

Answer: A

Question 96

The astronomer who discovered planet Pluto was

- A Sylvain Mend
- B Joseph Asbrook
- C Edwin Hubble
- D Clyde Tombaugh

Answer: D

Question 97

Read the given statements carefully and answer the question.

statement: The main reasons behind cyber criminals using international phone numbers to cheat the public, by asking their secured credit card details are

(i) it is easy to convince people and

(ii) it is difficult to trace the calls coming from foreign countries.

Which of the following is true according to the given statement?

- A There are only two reasons behind such calls.
- B People have full faith in foreign calls.
- C It is not possible to trace foreign calls.
- D Cyber criminals prefer international calls to cheat gullible people.

Answer: D

10 RRB JE Mocks-Tests Rs.117

Question 98

Three numbers are in the ratio of 3:5:10 and their LCM is 630. Find their HCF.

- A 21
- B 42
- C 63
- D 36

Answer: A

Question 99

3 years ago, the ratio of Maya's and Shikha's age was 5: 9 respectively. After 5 years, this ratio would become 3: 5. Find present age of Maya?

- A 40
- B 45
- C 43
- D 53

Answer: C

Question 100

if 'god is fair' = 'ge se fa', 'who is god' = 'ge we fa' and 'you are god' = 'ne le fa', which code does represent 'is'?

- A se
- B ge
- C fa
- D we

Answer: B

RRB General Science Notes (Download Pdf)

RRB NTPC Previous Papers (Download PDF)

RRB NTPC Free Mock Tests

RRB JE Previous Papers (Download Pdf)

RRB JE Free Mock Test

Daily Free RRB Online Test

RRB Group-D Previous Papers

RRB Free Videos (You Tube Channel)

20 RRB NTPC Mocks-Tests Rs.149

10 RRB JE Mocks-Tests Rs.117

RRB General Science Notes (Download Pdf)

RRB GK Material (Download Pdf)

Join Competitive Exam Updates Telegram Group