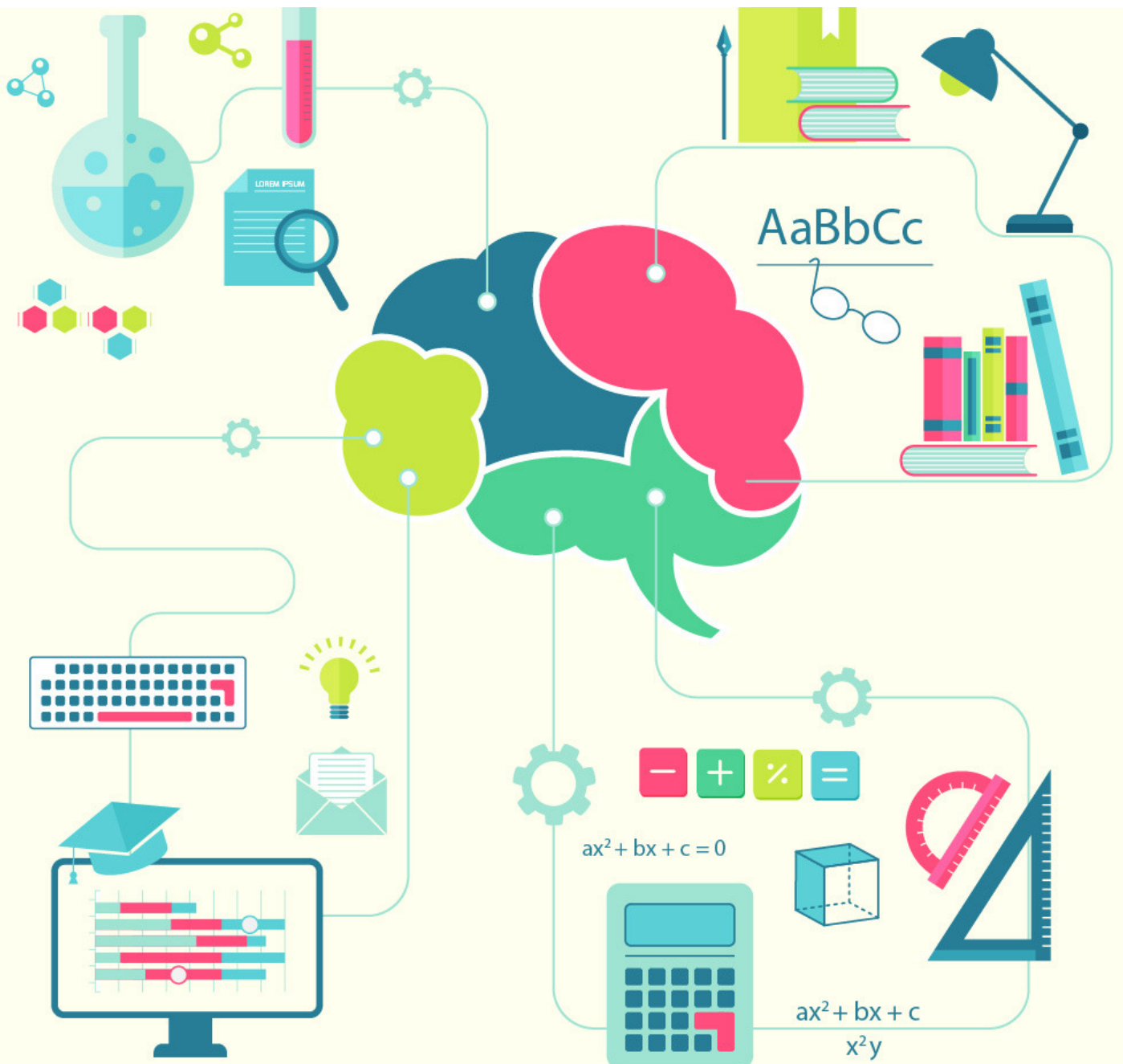


cracku 

Seating Arrangement Questions For IBPS Clerk PDF

17 Nov 2017





TAKE CRACKU'S FREE IBPS CLERK MOCK

Instructions:

Directions: Study the following information and answer the questions given below:

Eight people - E, F, G, H, J, K, L and M - are sitting around a circular table, facing the centre. Each of them is of a different profession - Chartered Accountant, Columnist, Doctor, Engineer, Financial Analyst, Lawyer, Professor and Scientist, but not necessarily in the same order. F is sitting second to the left of K. The Scientist is an immediate neighbour of K. There are only three people between the Scientist and E. Only one person sits between the Engineer and E. The Columnist is on the immediate right of the Engineer. M is second to the right of K. H is the Scientist. G and J are immediate neighbours of each other. Neither G nor J is an Engineer. The Financial Analyst is on the immediate left of F. The Lawyer is second to the right of the Columnist. The Professor is an immediate neighbour of the Engineer. G is second to the right of the Chartered Accountant.

[Click Here](#)

IBPS Clerk 2016 Prelims Question Paper

Question 1:

Who is sitting second to the right of E?

- a) The Lawyer
- b) G
- c) The Engineer
- d) F
- e) K

TOP RATED BANKING APP





SOLVE PAST IBPS CLERK PAPERS

Question 2:

Who among the following is the Professor?

- a) F
- b) L
- c) M
- d) K
- e) J

[Click Here](#)

IBPS Clerk 2015 Prelims Question Paper Analysis

Question 3:

Four of the following five are alike in a certain way based on the given arrangement and hence form a group. Which of the following does not belong to that group?

- a) Chartered Accountant - H
- b) M - Doctor
- c) J - Engineer
- d) Financial Analyst - L
- e) Lawyer - K

DOWNLOAD APP
FOR 100 FREE BANKING TESTS





Question 4:

What is the position of L with respect to the Scientist?

- a) Third to the left
- b) Second to the right
- c) Second to the left
- d) Third to the right
- e) Immediate right

Data Sufficiency Questions for IBPS Clerk

Question 5:

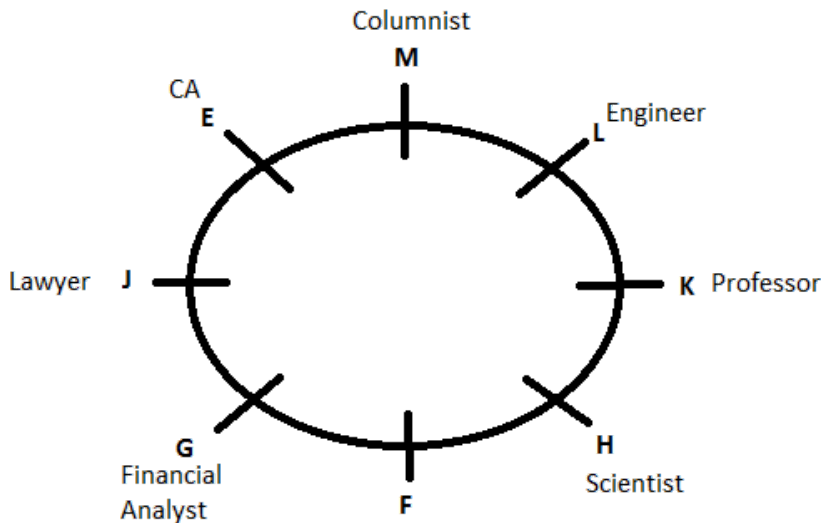
Which of the following statements is true according to the given arrangement?

- a) The Lawyer is second to the left of the Doctor.
- b) E is an immediate neighbour of the Financial Analyst.
- c) H sits exactly between F and the Financial Analyst.
- d) Only four people sit between the Columnist and F.
- e) All of the given statements are true.



SOLVE PAST IBPS CLERK PAPERS

Solutions: (1 to 5)



1) Answer (b)

Second to right of E is G.

2) Answer (d)

[Click here](#)

K is the professor.

IBPS Clerk English Study Material

3) Answer (c)

Except J and Engineer, all the other pairs are opposite to each other.

Therefore J and Engineer is the answer

4) Answer (b)

Second to the right of scientist is L.

5) Answer (a)

According to the figure, only option 1, which says that the lawyer is second to the left of doctor, is correct.

**DOWNLOAD APP
FOR 100 FREE BANKING TESTS**





TAKE CRACKU'S FREE IBPS CLERK MOCK

Free GK Tests for IBPS Clerk

Blood Relation Questions
for IBPS Clerk PDF

Download PDF of
Number Series Questions

IBPS Clerk Solved Previous
Question Papers

Whatsapp 'Banking' to join in Banking
Group to this number (7661025557)

TOP RATED BANKING APP

