



**SBI PO 2011**

All rights reserved. No part of this publication may be reproduced, distributed, or transmitted in any form or by any means, electronic, mechanical, photocopying, recording or otherwise, or stored in any retrieval system of any nature without the permission of cracku.in, application for which shall be made to [support@cracku.in](mailto:support@cracku.in)

## Verbal

### Instructions

Read the following passage carefully and answer the questions given below it. Certain word/phrases have been printed in **bold** to help you to locate them while answering some of the questions.

Jagir Singh has sold red onions at a market in south Delhi everyday for the past half-century. Perched on an upturned crate, wrapped tight against the chill air, he offers pyaz, a staple for much Indian cooking, for 60 rupees a kilo, the most he can remember. Business is brisk but most customers pick up only a small handful of onions. That is just as well-wholesale supplies are **tight**, he says, and the quality is poor.

As India's economy grows by some 9% a year, food prices are soaring. In late December the commerce ministry judged that food inflation had reached 18.3%, with pricey vegetables mostly to blame. Officials have made some attempts to **temper** the rise in the past month—scrapping import taxes for onions, banning their export and ordering low-prices sales at government-run shops. But there is no quick fix.

Heavy rain in the west of India brought a rotten harvest. Vegetables from farther afield— including a politically sensitive delivery from a neighbouring country— are costly to move on India's crowded, potholed roads. Few refrigerated lorries and poor logistics mean that much of each harvest is wasted. Newspapers allege hoarders are "cashing in".

The biggest problem are structural. Food Producers, hampered by land restrictions, **archaic** retail networks and bad infrastructure, fail to meet extra demand from consumers. It was estimated in October that a 39% rise in income per person in the previous five years might have created an extra 220 million regular consumers of milk, eggs, meat and fish. Supplies have not kept up with this potential demand.

The broader inflation rate may be a less eye-watering problem than the onion suggest. The central bank has lifted interest rates steadily in the past year and is expected to do so again later this month. Headline inflation fell to 7.5% in November, down by just over a percentage point from October, though it is still above the central bank's forecast of 5.5% for March.

### Question 1

**What is the responsible for the increased demand amongst consumers for certain food stuff?**

- A There has been an increase in the wholesale supplies of this food stuff
- B The vegetables in the market are very highly priced
- C There has been an increase in the incomes of people
- D There is lack of availability of vegetables in the market
- E There has been a surge in population

**Answer: C**

### Explanation:

Refer to the following lines of the paragraph: "It was estimated in October that a 39% rise in income per person in the previous five years might have created an extra 220 million regular consumers of milk, eggs, meat and fish. Supplies have not kept up with this potential demand." It is said that due to increase in income level, there is a high demand of food.

### Question 2

**Which of the following is "Not true" in the context of the passage?**

- A The overall inflation is not as bad as the food inflation in India
- B Help from other countries to counter food inflation has proved to be quite encouraging
- C Government is banning the export of certain types of vegetables in order to check the food inflation
- D Highly priced vegetables are mostly responsible for the increased food inflation
- E All the above statements are true

**Answer: B**

### Explanation:

The context of option b is nowhere mentioned in the paragraph. There is no mention of other countries help in this passage.

**Question 3**

**Which of the following is/are the reason/s for increase in food/vegetable prices?**

- A. Bad weather**
- B. Land restriction**
- C. poor infrastructure for storage and transportation**

- A** Only B
- B** Only A and C
- C** Only A and B
- D** Only B and C
- E** All A, B and C

**Answer: E**

**Explanation:**

"Heavy rain in the west of India brought a rotten harvest. Vegetables from farther afield-- including a politically sensitive delivery from a neighbouring country-- are costly to move on India's crowded, potholed roads. Few refrigerated lorries and poor logistics mean that much of each harvest is wasted." Heavy rain refers to the bad weather and Few refrigerated lorries and poor logistics means refers to poor infrastructure and transportation. Refer to the lines:"The biggest problem are structural. Food Producers, hampered by land restrictions,". Here the author talks about the land restrictions.

**Question 4**

**Which of the following is/are TRUE in the context of the passage?**

- A: The interest rates are being raised in India**
- B: India is witnessing a steady economic growth**
- C: It has been proven that the food inflation is mainly because of hoarding.**

- A** All A, B and C
- B** Only A and B
- C** Only C
- D** Only B and C
- E** None is true

**Answer: B**

**Explanation:**

Refer to the following lines of the paragraph:"The central bank has lifted interest rates steadily in the past year and is expected to do so again later this month." Here the author mentions about lifting of interest rates. Refer to the first line of the second para"As India's economy grows by some 9% a year, food prices are soaring. In late December the commerce ministry judged that food inflation had reached 18.3%, with pricey vegetables mostly to blame". The indian economy is growing according to this passage.

**Download Highly Rated Banking APP**

**Question 5**

**Which of the following is possibly the most appropriate title for the passage?**

- A** Food Inflation In India
- B** Of Onions And Vendors

- C Food Deficit Worldwide
- D Food Imports In India
- E Benefits To Indian Consumers

**Answer: A**

**Explanation:**

This whole passage talks about food inflation of India and its related aspects. The correct title would be "Food Inflation of India."

**Question 6**

**What can be said about the sale of onions at present as given in the passage?**

- A Vegetable vendors are unwilling to sell onions
- B People are not buying as much as they used to
- C The sale of onions has picked up and is unprecedented
- D People are buying more onions than they used to
- E None of these

**Answer: B**

**Explanation:**

Option b is mentioned in the first paragraph. Refer to the lines: "Perched on an upturned crate, wrapped tight against the chill air, he offers pyaz, a staple for much Indian cooking, for 60 rupees a kilo, the most he can remember. Business is brisk but most customers pick up only a small handful of onions."

**Question 7**

**The usage of the phrase "cashing in" in the passage can possibly mean---**

- A Profiting
- B Running Away
- C Paying Money
- D Bailing Out
- E Buffering

**Answer: A**

**Explanation:**

"Cashing in" means profiting from the particular activity.

## SBI PO Solved Previous Papers (Download PDF)

**Question 8**

**Which of the following is most similar in meaning to the word 'tight' as used in the passage?**

- A Firm
- B Loose
- C Limited

- D Taut
- E Tense

Answer: C

**Explanation:**

The wholesale supplies are tight means the wholesale supplies are limited. So the meaning of "TIGHT" is "LIMITED."

**Question 9**

Which of the following is "most similar" in meaning to the word "Temper" as used in the passage?

- A Displeasure
- B Anger
- C Rage
- D Harness
- E Control

Answer: E

**Explanation:**

In this context "temper" means "to control." Official have made attempts to control the prices.

**Question 10**

Which of the following is "most opposite" in meaning to the word "Archaic" as used in the passage?

- A Simple
- B Straightforward
- C Modern
- D Lively
- E Ancient

Answer: C

**Explanation:**

Archaic means old or antiquated. Its opposite is new or modern.

## Get Free Study Material & Updates - Whatsapp "Updates" to 7661025557

**Instructions**

Which of the phrases A, B, C and D given below each sentence should replace the phrase printed in "bold" in the sentence to make it grammatically correct? If the sentence is correct as it is given and no correction is required, mark E as the answer.

**Question 11**

Seeing that there was an ongoing sale in one of her favourite stores, **Seeta** made a beeline for it immediately after entering the Mall.

- A made a bee's line for
- B make bees lined to
- C made bee-line to

- D make bee-line to
- E No correction required

**Answer: E**

**Explanation:**

"Making a beeline" means to immediately head for something which is correct in this context.

**Question 12**

**Sharon made it to work in the nicks of times, or else she would have missed the meeting.**

- A nick of time
- B nicked time
- C nick of timeliness
- D nick and time
- E No correction required

**Answer: A**

**Explanation:**

The correct usage is nick of time which means "at the last possible instant."

**Question 13**

**Varun was on cloud nine after having stood first in his class.**

- A in ninth cloud
- B on nine clouds
- C a cloudy nine
- D cloud on nine
- E No correction required

**Answer: E**

**Explanation:**

"On cloud nine" means extremely elated or delighted which is correct in this context.

## SBI PO Free Mocks (Latest Pattern)

**Question 14**

**Vithal had a habit of pass the buck when it came to important issues at work.**

- A pass to bucking
- B passing buck
- C passing the buck
- D pass buck
- E No correction required

**Answer: C**

**Explanation:**

"Passing the buck" means to give one's responsibility to someone else or to other group.

**Question 15**

**Puneet raked his brains and tried to find an answer to a tricky question given in the paper but couldn't find one.**

- A rake his brain
- B racked his brains
- C racked brains
- D raked brain
- E No correction required

**Answer: E**

**Explanation:**

"Raked his brains" means "to think very hard."

**Instructions**

Each question below has two blanks, each blank indicating that something has been omitted. Choose the set of word for each blank which best fits the meaning of the sentence as a whole.

**Question 16**

**The water transport project on the west coast is ..... to get a shot in the arm with a new plan in which the Road Development Corporation will build the infrastructure and..... a private party to operate the service.**

- A scheduled - let
- B verge - permit
- C set - sanctions
- D slated - allow
- E bound - task

**Answer: E**

**SBI Clerk Free Mock Test (Latest Pattern)**

**Question 17**

**As the weekend finally rolled around, the city folk were only ..... happy to settle down and laugh their cares.....**

- A just - afar
- B too - away
- C extremely - off
- D very - up
- E so - on

**Answer: B**

Question 18

The flood of brilliant ideas has not only ..... us, but has also encouraged us to ..... the last date for submission of entries.

- A overwhelmed - extend
- B enjoyed - stretch
- C dismayed - decide
- D scared - scarp
- E happy - boundary

Answer: A

Explanation:

E can be eliminated, as the word we ought to use should be parallel with 'encouraged'. We can eliminate B, D as we never stretch or scarp a date. Between A&C, C can be eliminated as brilliant ideas never dismay us. Hence, A is correct.

Question 19

.....about prolonged power cuts in urban areas, the authorities have decided to ..... over to more reliable and eco-friendly systems to run its pumps.

- A Worried - shift
- B Franitc - move
- C Trouble - jump
- D Concerned - switch
- E Endangered - click

Answer: D

**SBI Clerk Previous Papers (Download PDF)**

Question 20

The high cutoff marks this year have college admission-seekers to either ..... for lesser known colleges or change their subject preferences.

- A cajoled - ask
- B pressured - sit
- C forced - settle
- D strained - compromise
- E entrusted - wait

Answer: C

Instructions

Read the following passage carefully and answer the questions given it. Certain word/phrases have been printed in "bold" to help you to locate them while answering some of the questions.

India is rushing headlong towards economic success and modernisation, counting on hightech industries such as information technology and biotechnology to **propel** the nation to prosperity.



India's recent announcement that it would no longer produce unlicensed inexpensive generic pharmaceuticals bowed to the realities of the World Trade Organisation while at the same time challenging the domestic drug industry to compete with the multinational firms. Unfortunately, its weak higher education sector constitutes the **Achilles' heel** of this strategy. Its systematic disinvestment in higher education in recent years has yield neither world-class research nor very many highly trained scholars, scientists or managers to sustain high-tech development.

India's main competitor especially China but also Singapore, Taiwan and South Korea are investing in large and "differentiated" higher education systems. They are providing access to large number of students at the bottom of the academic system while at the same time building some research-based universities that are able to compete with the world's best institutions. The recent London Times Higher Education Supplement ranking of the world's top 200 universities included three in China, three in Hong Kong three in South Korea. one in Taiwan, and one in India. These countries are positioning themselves for leadership in the knowledge based economies for coming era.

There was a time when countries could achieve economic success with cheap labour and low-tech manufacturing. Low wages still help, but contemporary large-scale development requires a sophisticated and at least partly knowledge-based economy. India has chosen that path, but will find a major **stumbling block** in its universities system.

India has significant advantages in the 21st century knowledge race. It has a large higher education sector --- the third largest in the world in student numbers, after China and the United States. It uses English as a primary language of higher education and research. It has a long academic tradition. Academic freedom is respected. There are a small number of highly quality institutions, departments, and centres that can form the basis of quality sector in higher education. The fact that the States, rather than the Central Government, exercise major responsibility for higher education creates a rather **cumbersome** structure, but the system allows for a variety of policies and approaches.

Yet the weakness far outweigh the strengths. India educates approximately 10 per cent of its young people in higher education compared with more than half in the major industrialised countries and 15 per cent in China. Almost all of the world's academic systems **resemble** a pyramid, with a small high quality tier at the top and a **massive** sector at the bottom. India has a tiny top tier. None of its universities occupies a solid position at the top. A few of the best universities have some excellent departments and centres and there are a small number of outstanding undergraduate colleges. The university Grants Commission's recent major support of five universities to build on their recognised strength is a step toward recognising a **differentiated** academic system and **fostering** excellence. These universities, combined, enroll well under 1 percent of the student population.

#### Question 21

Which of the following is "TRUE" in the context of the passage?

- A The top five universities in India educate more than 10 percent of the Indian student population.
- B India's higher education sector is the largest in the world
- C In the past, countries could progress economically through low manufacturing cost as well as low wages of labour
- D India has recently invested heavy sums in the higher education sector leading to world class research
- E All are true

Answer: C

#### Explanation:

A is incorrect as the passage never discussed about number of people educated by top universities. B is incorrect as the passage states that India is the third largest in higher education. D is incorrect as passage doesn't contain information on heavy sums invested in higher education But, third para 1st line states that countries progressed economically through low-tech manufacturing as well as low wages of labor.

#### Question 22

What does the phrase 'Achilles' Heel' mean as used in the passage?

- A Weakness
- B Quickness
- C Low Quality
- D Nimbleness
- E Advantage

**Answer: A**

**Explanation:**

Refer to the third line of 2nd para you will come across 'Achilles Heel'. The line states that India's weaker higher education sector constitutes Achilles Heel of this strategy (strategy to produce unlicensed inexpensive generic pharmaceuticals) which means weakness as used in the context of the passage. Quickness and nimbleness are synonyms meaning agile in nature. Low quality means poor. Advantage means having an upper hand. Hence, A is correct

## Banking Daily Free Topic Test

**Question 23**

**Which of the following is/are India's strength/s in terms of higher education?**

**A: Its system of higher education allows variations**

**B: Medium of instruction for most higher learning is English**

**C: It has the paraphernalia, albeit small in number, to build a high quality higher educational sector.**

- A Only B
- B Only A and B
- C Only C
- D Only B and C
- E All A, B and C

**Answer: E**

**Explanation:**

Refer to 5th para 2nd line, we can find both A&B, (stating that English is a primary language of higher education and research, also academic freedom is respected) refer to the last line of the passage, we can find C stating that top universities enroll under 1 percent of the student population and which means that even though it is small in number, the universities can build a high quality higher educational sector.

**Question 24**

**Which of the following are Asian countries other than India, doing to head towards a knowledge based economy?**

**A. Building competitive research based universities**

**B. Investing in diverse higher education systems**

**C. Providing access to higher education to a select few students.**

- A Only A
- B Only A and B
- C Only B and C
- D Only B
- E All A, B and C

**Answer: B**

**Explanation:**

Refer to 3rd paragraph 1st line. It states that countries like China, Singapore are investing in differentiated higher education systems. Hence, B is correct. A is also correct as it was mentioned in 3rd paragraph 3rd line. Hence, B is correct.

**Question 25**

**Which of the following is possibly the most appropriate title for passage?**

- A The Future Of Indian Universities

- B Methods of Overcoming The Educational Deficit In India
- C India And The Hunt For A Knowledge Based Economy
- D Indian Economy Versus Chinese Economy
- E Indian Economy And Its Features

**Answer:** C

**Explanation:**

The title should give an information on the main point covered in the passage. The main point of the passage is covered in the first line itself and states that India is heading towards economic success and modernization. Also, there is another instance in the para 3 last line stating that India is positioning itself for leadership in knowledge based economies. So, A can be eliminated as the passage did not discuss about future of Indian universities. B can be eliminated as the title seems too narrow and main point did not get covered. The passage never compared Indian economy with Chinese economy or never discussed about Indian economy. Option C perfectly catches the main idea which states that India is trying to become a knowledge based economy.

**Question 26**

**What did India agree to do at the behest of the World Trade Organisation?**

- A It would stop manufacturing all types of pharmaceuticals
- B It would ask its domestic pharmaceutical companies to compete with the international ones
- C It would buy only licensed drugs from USA
- D It would not manufacture cheap common medicines without a license
- E None of these

**Answer:** D

**Explanation:**

Refer to the 2nd para 1st line stating that India would no longer produce unlicensed inexpensive generic pharmaceuticals. D captures this idea perfectly.

**Question 27**

**Which of the following is/are India's weakness/es when it comes to higher education?**

- A. India universities do not have the requisite teaching faculty to cater to the needs of the higher education sector
- B. Only five Indian universities occupy the top position very strongly, in the academic pyramid, when it comes to higher education
- C. India has the least percentage of young population talking to higher education as compared to the rest of the comparable countries.

- A Only A and B
- B Only B
- C Only C
- D Only A and C
- E All A, B and C

**Answer:** C

**Explanation:**

A is out of context and is not covered in the passage. B is incorrect as the last paragraph's third line states that India has a tiny top tier and none of its universities occupies a top position. Hence, only C is correct

**Question 28**

Which of the following , according to the passage, is/are needed for economic success of a country?

- A. Cheap labour
- B. Educated employees
- C. Research institutions to cater to development

- A Only A and B
- B Only B
- C Only C
- D Only B and C
- E All A, B and C

**Answer:** E

**Explanation:**

Refer to the 4th paragraph 2nd line stating that low wages still help and large scale development requires a sophisticated and atleast a partly knowledge based economy-which means it requires both A &B.The; main point of the last paragraph is that universities are considered as an epitome for getting established as a good economy.Hence,A,B,C all are correct

## Download Highly Rated Banking APP

**Question 29**

Choose the word/group of words which is most similar in meaning to the word printed in bold as used in the passage: **FOSTERING**

- A safeguarding
- B neglecting
- C sidelining
- D nurturing
- E ignoring

**Answer:** D

**Explanation:**

Fostering means to encourage the development of some one or something.Nurturing means protect some one when they are going.Hence,D suits the most .

**Question 30**

Choose the word/group of words which is most similar in meaning to the word printed in bold as used in the passage: **PROPEL**

- A drive
- B jettison
- C burst
- D acclimatize
- E modify

**Answer:** A

**Explanation:**

Propel is to drive something forward. Jettison means dropping something from a height. Burst means to explode. Acclimatize means adjusting to a situation. Modify is to change. Option A is the synonym for propel.

**Question 31**

Choose the word/group of words which is most similar in meaning to the word printed in bold as used in the passage: **MASSIVE**

- A lump sum
- B strong
- C little
- D gaping
- E huge

**Answer:** E

**Explanation:**

Massive means exceptionally large or huge. Lump sum means giving at a time in a single payment. Strong means powerful. Little means small in number. Gaping means wide open. So, E is correct

## SBI PO Solved Previous Papers (Download PDF)

**Question 32**

Choose the word/group of words which is most similar in meaning to the word printed in bold as used in the passage: **STUMBLING BLOCK**

- A argument
- B frustration
- C advantage
- D hurdle
- E fallout

**Answer:** D

**Explanation:**

Stumbling Block means a situation which causes extreme difficulty. Argument means a heated dispute. Frustration means anger or irritation. Advantage means a favorable position. Fall out is a phrasal verb used to denote detached objects. Hence, D hurdle is correct.

**Question 33**

Choose the word which is most opposite in the meaning of the word printed in bold as used in the passage: **CUMBERSOME**

- A handy
- B manageable
- C breathtaking
- D awkward
- E difficult

**Answer:** B

**Explanation:**

Cumbersome means difficult in nature. Handy means helpful. Breathtaking means a situation which involves risk. Awkward means not so usual. Manageable means something which is easy. So, B is correct.

**Question 34**

Choose the word which is most opposite in the meaning of the word printed in bold as used in the passage: **RESEMBLE**

- A against
- B similar to
- C mirror
- D differ from
- E unfavourable to

**Answer:** D

**Explanation:**

Resemble means quite alike or similar to or mirror image. Hence, B & C are eliminated. Unfavorable means unfriendly or against the usual. Hence, A & E are eliminated. So, D is correct.

**Get Free Study Material & Updates - Whatsapp "Updates" to 7661025557**

**Question 35**

Choose the word which is most opposite in the meaning of the word printed in bold as used in the passage: **DIFFERENTIATED**

- A similar
- B varied
- C harmonized
- D synchronized
- E discriminated

**Answer:** C

**Explanation:**

Differentiated means altered or changed. Similar means almost alike but not the exact. Varied is a synonym for differentiated. Synchronized means happening in a balanced rhythm. Discriminated means showing disapproval on some one or showing one-sidedness. Harmonized means a perfect match. Hence, C harmonized is correct.

**Instructions**

Rearrange the following six sentences, A, B, C, D, E and F in the proper sequence to form a meaningful paragraph. Then answer the questions given below them.

- A. Its prevalence reflects very badly on a society that is not able to stop this evil.
- B. Though elimination of child labour is an impossible task considering the current socio-economic scenario of these poor families, the Indian government is committed to the task of ensuring that no child remains illiterate, hungry without medical care.
- C. Therefore, unless the socio-economic status of the poor families is improved. India has to live with child labour.
- D. The members of these households have to send their children to work, even if the future of these innocent children is ruined, as that is the only choice open for them to survive in this world.
- E. Child labour is, no doubt, an evil that should be done away with at the earliest.
- F. But in a society where many households may have to suffer the pangs of hunger if the children are withdrawn from work, beggars can't be choosers.

**Question 36**

Which of the following should be the FIRST sentence after rearrangement?

- A A
- B E
- C C
- D F
- E D

**Answer: B**

**Explanation:**

Sentence E introduces the topic of the paragraph, thus it should be the first sentence. Sentence A further talks about how child labour reflects badly on society and how society is not able to stop it. So, A follows E. Sentence F talks about the condition of poor households that is further continued in sentence D which tells us why these households send their children to work. Sentence C concludes that child labour can't be tackled unless socio-economic status of the poor families is improved. Hence F-D-C should come together. Sentence B concludes that elimination of child labour is an impossible task considering the current socio-economic scenario. Thus, it should follow C. So, the correct sequence is E-A-F-D-C-B.

Thus the first sentence is E.

**Question 37**

**Which of the following should be the THIRD sentence after rearrangement?**

- A B
- B A
- C C
- D F
- E E

**Answer: D**

**Explanation:**

Sentence E introduces the topic of the paragraph, thus it should be the first sentence. Sentence A further talks about how child labour reflects badly on society and how society is not able to stop it. So, A follows E. Sentence F talks about the condition of poor households that is further continued in sentence D which tells us why these households send their children to work. Sentence C concludes that child labour can't be tackled unless socio-economic status of the poor families is improved. Hence F-D-C should come together. Sentence B concludes that elimination of child labour is an impossible task considering the current socio-economic scenario. Thus, it should follow C. So, the correct sequence is E-A-F-D-C-B.

Thus the third sentence is F.

## SBI PO Free Mocks (Latest Pattern)

**Question 38**

**Which of the following should be the SECOND sentence after rearrangement?**

- A A
- B F
- C D
- D B



E C

**Answer: A**

**Explanation:**

Sentence E introduces the topic of the paragraph, thus it should be the first sentence. Sentence A further talks about how child labour reflects badly on society and how society is not able to stop it. So, A follows E. Sentence F talks about the condition of poor households that is further continued in sentence D which tells us why these households send their children to work. Sentence C concludes that child labour can't be tackled unless socio-economic status of the poor families is improved. Hence F-D-C should come together. Sentence B concludes that elimination of child labour is an impossible task considering the current socio-economic scenario. Thus, it should follow C. So, the correct sequence is E-A-F-D-C-B.

Thus the second sentence is A.

**Question 39**

**Which of the following should be the FIFTH sentence after rearrangement?**

A E

B A

C F

D C

E D

**Answer: D**

**Explanation:**

Sentence E introduces the topic of the paragraph, thus it should be the first sentence. Sentence A further talks about how child labour reflects badly on society and how society is not able to stop it. So, A follows E. Sentence F talks about the condition of poor households that is further continued in sentence D which tells us why these households send their children to work. Sentence C concludes that child labour can't be tackled unless socio-economic status of the poor families is improved. Hence F-D-C should come together. Sentence B concludes that elimination of child labour is an impossible task considering the current socio-economic scenario. Thus, it should follow C. So, the correct sequence is E-A-F-D-C-B.

Thus the fifth sentence is C.

**Question 40**

**Which of the following should be the SIXTH sentence after rearrangement?**

A A

B C

C E

D D

E B

**Answer: E**

**Explanation:**

Sentence E introduces the topic of the paragraph, thus it should be the first sentence. Sentence A further talks about how child labour reflects badly on society and how society is not able to stop it. So, A follows E. Sentence F talks about the condition of poor households that is further continued in sentence D which tells us why these households send their children to work. Sentence C concludes that child labour can't be tackled unless socio-economic status of the poor families is improved. Hence F-D-C should come together. Sentence B concludes that elimination of child labour is an impossible task considering the current socio-economic scenario. Thus, it should follow C. So, the correct sequence is E-A-F-D-C-B.

Thus the sixth sentence is B.



## SBI Clerk Free Mock Test (Latest Pattern)

### Instructions

In the following passage there are blanks, each of which has been numbered. These numbers are printed below the passage and against each, five words are suggested, one of which fits the blank approximately. Find out the appropriate word in each case. Around the world, forests are being (191) at a rate of about thirteen million hectares a year and deforestation accounts for an estimated 17%-20% of all global emissions. In addition, forests and other terrestrial carbon sinks play a (192) role in preventing runaway climate change, soaking up a full 2.6 Gt of atmosphere carbon every year. The destruction of forests, therefore, not only emits carbon—a staggering 1.6 Gt a year, which severely (193) forests' capacity to absorb emissions from other sources—but also drastically (194) the amount of forested land available to act as a carbon sink in the future. However, the effects of deforestation extend beyond carbon. Rainforests (195) a wide variety of ecosystems services, from regulating rainfall to purifying groundwater and keeping fertile soil from (196); deforestation in one area can seriously damage food production and (197) to clean water in an entire region. The value of global ecosystem services has been estimated at 33 trillion USD each year (almost half of global GDP), but these services have been taken for granted without a mechanism to make the market reflect their value. Rainforests are also a home and (198) of income for a huge number of people in Africa, Asia and South America. (199) this, economic pressures frequently drive both local communities and national governments in the developing world to (200) these forests in ways that are unsustainable, clear-cutting vast areas for fuel, timber, mining, or agricultural land.

### Question 41

191

- A ended
- B destroyed
- C extinct
- D killed
- E wasted

**Answer: B**

### Explanation:

Substituting the options in the given sentence, only destroyed fits correctly. as it reads 'the forests are being destroyed at the rate of 13 million hectares leading to deforestation'. Wasted, ended and extinct are irrelevant in the given context. We don't use killed to represent a tree or a forest. Hence, B.

### Question 42

192

- A tough
- B important
- C vital
- D biggest
- E effective

**Answer: C**

### Explanation:

The sentence means that the carbon sinks are playing a crucial role in blocking climate changes. Hence, the adjective we use should modify 'role'. Effective & important can be eliminated as those should be preceded by article 'an', biggest can be eliminated as it should be preceded by article 'the'. substituting tough in the given context, makes the sentence awkward. Hence, C is correct as it reads 'the carbon links play a vital role in preventing climate change'

**Question 43**

193

- A affect
- B diminish
- C increases
- D alternates
- E impairs

**Answer:** E

**Explanation:**

The destruction of forests is a singular phase and should have a singular verb(verb+es form) .Hence, A,B are eliminated. The destruction of forests has a negative impact on the forest's capacity to absorb emissions, but cannot increase their capacity so, C can be eliminated. Between D&E, impairs fits properly into the sentence as it can be read as ' the destruction of forests severely impairs(weakens) the forest's capacity to absorb carbon links.Hence, E.

## SBI Clerk Previous Papers (Download PDF)

**Question 44**

194

- A plagues
- B develops
- C reduces
- D shortens
- E influences

**Answer:** C

**Explanation:**

the destruction of forests will lead to a reduction of forest land. So,B can be eliminated as it means the contrast. Plague is a contagious disease and cannot be used in the context. Among reduces,shortens & influences, shortens means to reduce the size but can be used only with small things. Between influences & reduces, usage of influences is not sure whether increases(positive impact ) or decreases(negative impact) the forest land. But the passage is clearly stating that carbon emissions decreases the forest lands. Hence, reduces fits well as the main idea of the passage is destruction of the forests leads to blocking of climatic changes. Hence, C

**Question 45**

195

- A sell
- B offers
- C give
- D provide
- E earns

**Answer:** D

**Explanation:**

We can eliminate B,E as rain-forests is a plural and cannot be succeeded by a singular form of verb. A can be eliminated as rain-forests never sell .Between give&provide;, provide fits in well as the sentence can be read as 'rain-forests provide a wide variety of ecosystem services.' Hence, D

**Question 46**

196

- A transforming
- B decoding
- C erupting
- D draining
- E eroding

**Answer:** E

**Explanation:**

Transforming means to change, decoding means to decipher or to extract information. eruption means discharge and used for lava . draining means to dry up or evacuate a fluid and cannot be used with reference to soil. Erosion means wearing away or moving off due to external factors(here wind).The passage states the consequences of deforestation and so, eroding fits well as the sentence reads 'regulating rain water and keeping fertile soil from eroding.' Hence, E is correct.

## Banking Daily Free Topic Test

**Question 47**

197

- A handiness
- B excess
- C availability
- D access
- E supply

**Answer:** D

**Explanation:**

As the sentence means that deforestation leads to problems of sand, air& water, We can eliminate A,B, as they make the sentence irrelevant. E, can be eliminated as supply succeeds preposition 'of' many a time. Between availability and access ,the latter fits properly.Hence, D.

**Question 48**

198

- A beginning
- B source
- C ways
- D reference
- E measure

**Answer: B**

**Explanation:**

source of income is the correct phrase. All the other words given as options sound awkward. Though ways of income seems correct, it doesn't fit the context properly. Hence, B.

**Question 49**

199

- A Despite
- B Also
- C In spite
- D Apart
- E Beside

**Answer: A**

**Explanation:**

We can eliminate C as in spite is followed by preposition 'of'. E should be corrected as besides to fit in the sentence. D should be preceded by preposition from. Between A, B despite this economic pressures frequently drive both local communities and governments seem correct. Hence, A.

**Question 50**

200

- A exploit
- B encompass
- C nurture
- D work
- E improve

**Answer: A**

**Explanation:**

The sentence means that the economic pressures are hindering the stoppage of deforestation, Hence, B, C & E can be eliminated. D, is irrelevant in the context. A, exploit means make use of situation in a favorable way. Hence, A

**Download Highly Rated Banking APP**

**General Awareness**

**Instructions**

For the following questions answer them individually

**Question 51**

**A major Public Sector raised interest rates on loans by 25 basis points--- was news in some major financial newspapers recently. This means bank has raised interest by 25 basis points of----**

- A Saving Bank Interest Rate
- B Base Lending Rate

- C Repo Rate
- D Present Rates on Deposits
- E Discounted Rates of Interest

**Answer: B**

## SBI PO Solved Previous Papers (Download PDF)

### Question 52

The Finance Minister of India in one of his press conference said that inflationary pressure is likely to continue following recent increase in rates of some commodities in international markets. Which of the following commodities was he referring to as it gets frequent increase at international levels and disturbs our Home Economy substantially?

- A Gold and Silver
- B Petroleum products
- C Tea and Coffee
- D Sugar
- E Jute and Jute products

**Answer: B**

### Question 53

Immediately prior to change in the measure of Food Inflation, which of the following indexes was being used for measuring it.

- A Wholesale Price Index
- B Consumer Price Index
- C Interest Rates Offered by banks on deposits
- D Sensex and Nifty
- E None of these

**Answer: B**

### Question 54

What is the full form of 'FINO' a term we see frequently in financial newspaper?

- A Financial Investments Network and Operations
- B Farmer's Investment in National Organisation
- C Farmers Inclusion News and Operations
- D Financial Inclusion News and Operations
- E None of these

**Answer: E**

### Explanation:

The full form of 'FINO' is Financial Investment Network and Operators.

## Get Free Study Material & Updates - Whatsapp "Updates" to 7661025557

### Question 55

Which of the following is/are commodity/ies on which subsidy is given to farmers/poor in India?

- A. Fertilizer B. Kerosene  
C. LPG

- A Only A  
B Only B  
C Only C  
D Only A and C  
E All A, B and C

Answer: E

### Question 56

'Bhagam Oilfields' which were recently in news are located in which of the following states in India?

- A Rajasthan  
B Gujarat  
C Assam  
D Maharashtra  
E Karnataka

Answer: A

### Question 57

The Finance Minister of India recently decided to review the position of 'Bad Debts' in priority sector. Which of the following is/are the reason (s) owing to which FM took this decision?

- A. Bad Debt in agriculture is still rising substantially every year despite special treatment to it.  
B. Bad Debt in other areas of priority sector is almost nil now.  
C. Govt. is planning to disburse another instalment of Rs. 1,60,000 crore which will bring 'Bad Debts' almost at 'Nil level' and no special treatment will be needed in next fiscal year.

- A Only A  
B Only B  
C Only C  
D Both A and B  
E All A, B and C

Answer: E

**SBI PO Free Mocks (Latest Pattern)**

**Question 58**

Which among the following countries is NOT a member of the TAPI pipeline project, which was in news recently?

- A India
- B Afghanistan
- C Portugal
- D Pakistan
- E Turkmenistan

**Answer: C**

**Question 59**

An agreement on Arms Reduction popularly known as 'START' is one of the major issues in the way of smooth relations between which of the following two countries?

- A India - Pakistan
- B India - China
- C China - Japan
- D USA - Russia
- E Russia - Iran

**Answer: D**

**Question 60**

The International WWW Conference - 2011 was organized in which of the following places in March 2011?

- A London
- B Paris
- C Vienna
- D Manila
- E Hyderabad

**Answer: E**

## **SBI Clerk Free Mock Test (Latest Pattern)**

**Question 61**

Which of the following international agencies/organizations had initiated an "International Convention for the 'Protection of All Persons from Enforced Disappearance', which came into effect recently?

- A World Health Organisation (WHO)
- B International Court of Justice
- C International Maritime Organisation

D International Atomic Energy Agency

E United Nations Organisation

**Answer: E**

**Question 62**

'BRIC' which was the Organisation of 4 nations namely Brazil, Russia, India and China has now become 'BRICS' which is the fifth nation included in it?

A South Korea

B Sri Lanka

C Singapore

D Spain

E South Africa

**Answer: E**

**Question 63**

The process of acquisition of agricultural land and its compensation to farmers recently came up as a major issue in which of the following states? (It also created law and order problem in the State)

A Haryana

B Gujarat

C Uttar Pradesh

D Rajasthan

E Punjab

**Answer: C**

## **SBI Clerk Previous Papers (Download PDF)**

**Question 64**

What does the letter 'L' denote in term 'LAF' as referred every now and then in relation to monetary policy of the RBI ?

A Liquidity

B Liability

C Leveraged

D Longitudinal

E Linear

**Answer: A**

**Question 65**

BP Plc which was in news recently is a major international company in field of



- A Heavy Machinery
- B Oil exploration & processing
- C Atomic Energy
- D Information Technology
- E None of these

**Answer: B**

**Question 66**

Who amongst the following has been appointed as the new coach of the Indian Cricket team for a period of two years?

- A Stuart Law
- B Allan Border
- C Gary Kristen
- D Duncan Fletcher
- E Allan Donald

**Answer: D**

## Banking Daily Free Topic Test

**Question 67**

Why was the Kanishtha Dhankhar's name in news recently?

- A She was crowned Femina Miss India-2011
- B She was adjudged Best Actress-2010 by Film Fare
- C She is the Captain of India's woman cricket team
- D She is the new Dy. Minister Textile in place of Dayanidhi Maran
- E None of these

**Answer: A**

**Question 68**

K. Balachander, who was awarded prestigious Dada Saheb Phalke Award-2010, is basically a/an

- A Actor
- B Director
- C Photographer
- D Music Director
- E Choreographer

**Answer: B**

**Question 69**

Banks and other financial institutions in India are required to maintain a certain amount of liquid assets like cash, precious metals and other short term securities as a reserve all the time. In Banking World this is known as-

- A CRR
- B Fixed Asset
- C SLR
- D PLR
- E None of these

**Answer: A**

**Question 70**

Which of the following Space agencies recently launched three satellites and placed them into Polar Sun Synchronous Orbit successfully?

- A NASA
- B ROSCOSMOS
- C cnsa
- D ISRO
- E JAXA

**Answer: D**

**Question 71**

As per the decision taken by the Govt. of India recently, 'Bamboo is a liberated item now'. What does it really mean?

- A: Bamboo, henceforth will be treated as a minor forest produce only
- B: Now villagers are free to sell bamboo in their community forest areas
- C: Gramsabha is given right to issue transport passes to legally transport the produce.

- A Only A
- B Only B
- C Only C
- D All A, B and C
- E None of these

**Answer: D**

**Question 72**

Union Cabinet recently passed a Rs. 7000/- crore project to clean up which of the following rivers in India?

- A Narmada
- B Ravi

- C Ganga
- D Chambal
- E Krishna

**Answer: C**

## Download Highly Rated Banking APP

### Question 73

As per estimates of the Planning Commission of India the target growth rate of 12th Five Year Plan is set to

- A 7% to 8%
- B 8.0% to 8.5%
- C 9% to 9.5%
- D 10% to 10.5%
- E 11%

**Answer: E**

### Question 74

Goodluck Jonathan was recently reelected the President of-

- A South Africa
- B Nigeria
- C Kosovo
- D Haiti
- E None of these

**Answer: B**

### Question 75

Which of the following schemes is NOT launched by the Ministry of Rural Development, Govt. of India?

- A National Old Age Pension Scheme
- B National Maternity Benefit Scheme
- C National Family Benefit Scheme
- D Mid-Day Meal Scheme
- E All are launched by Ministry of Rural Development

**Answer: D**

**SBI PO Solved Previous Papers (Download PDF)**

**Question 76**

**Where you are likely to find an embedded operating system?**

- A on a desktop operating system
- B on a networked PC
- C on a network server
- D on a PDA
- E on a mainframe

**Answer: D**

**Question 77**

**An online discussion group that allows direct 'live' communication is known as-----**

- A Webcrawler
- B chat group
- C regional service provider
- D hyperlink
- E e-mail

**Answer: B**

**Question 78**

**Which of the following is a program that uses a variety of different approaches to identify and eliminate spam?**

- A Directory search
- B Anti-spam program
- C Web server
- D Web storefront creation package
- E Virus

**Answer: B**

**Get Free Study Material & Updates - Whatsapp "Updates" to 7661025557**

**Question 79**

**Connection or link to other documents or Web Pages that contain related information is called---**

- A dial-up
- B electronic commerce
- C hyperlink
- D e-cash

E domain name

**Answer: C**

**Question 80**

**Which of the following is a programming language for creating special programs like applets?**

A Java

B cable

C domain name

D Net

E COBOL

**Answer: A**

**Question 81**

**The system unit-----**

A coordinates input and output devices

B is the container that houses electronic components

C is a combination of hardware and software

D controls and manipulates data

E does the arithmetic operations

**Answer: C**

## SBI PO Free Mocks (Latest Pattern)

**Question 82**

**System software-----**

A allows the user to diagnose and trouble-shoot the device

B is a programming language

C is part of a productivity suite

D is an optional form of software

E helps the computer manage internal resources

**Answer: E**

**Question 83**

**Computer and communication technologies, such as communication links to the Internet that provide help and understanding to the end user is known as---**

A presentation file

B information technology

- C program
- D worksheet file
- E FTP

**Answer: B**

**Question 84**

Which of the following contained on chips connected to the system board and is a holding area for data instructions and information? (processed data waiting to be output to secondary storage)

- A program
- B mouse
- C internet
- D memory
- E modem

**Answer: D**

**SBI Clerk Free Mock Test (Latest Pattern)**

**Question 85**

Microsoft's Messenger allows user to -----

- A to bypass a browser to surf the Web
- B create a blog
- C communicate via direct live communication
- D identify and eliminate spam
- E make graphic presentation

**Answer: C**

**Question 86**

Portable computer, also known as laptop computer, weighing between 4 and 10 pounds is called---

- A general-purpose application
- B internet
- C scanner
- D printer
- E notebook computer

**Answer: E**

**Question 87**

The main circuit-board of the system unit is the---

- A computer program
- B control unit
- C motherboard
- D RAM
- E None of these

**Answer: C**

## SBI Clerk Previous Papers (Download PDF)

### Question 88

Which of the following is billionth of a second?

- A Gigabyte
- B Terabyte
- C Nanosecond
- D Microsecond
- E Terasecond

**Answer: C**

### Question 89

Online Marketing is the function of which of the following?

- A Purchase Section
- B Production Department
- C I.T. Department
- D Design Section
- E A collective function of all staff

**Answer: E**

### Question 90

Customisation is useful for-----

- A Designing customer specific products
- B Call centres
- C Publicity
- D Motivating the staff
- E Cold calls

**Answer: A**

## Banking Daily Free Topic Test

### Question 91

The key challenge to market driven strategy is-----

- A Selling maximum products
- B Employing maximum DSAs
- C Delivering superior value to customers
- D Being rigid to changes
- E Adopting short term vision

Answer: C

### Question 92

Effective Selling skills depends on -----

- A Size of the sales team
- B Age of the sales team
- C Peer strength
- D Knowledge level of the sales team
- E Educational level of the sales team

Answer: D

### Question 93

Generation of sales leads can be improved by----

- A Being very talkative
- B Increasing personal and professional contacts
- C Being passive
- D Engaging Recovery Agents
- E Product design

Answer: B

### Question 94

A Market Plan is----

- A Performance Appraisal of marketing staff
- B Company Prospects
- C Documented marketing strategies
- D Business targets



E Call centre

**Answer: C**

**Question 95**

**Marketing channels mean---**

A Delivery objects

B Sales targets

C Delivery Outlets

D Delivery boys

E Sales team

**Answer: C**

**Question 96**

**Social Marketing means-----**

A Share market prices

B Marketing by the entire society

C Internet Marketing

D Marketing for social cause

E Society bye-laws

**Answer: D**

**Download Highly Rated Banking APP**

**Question 97**

**Service Marketing is the same as---**

A Internet Marketing

B Telemarketing

C Internal Marketing

D Relationship Marketing

E Transaction Marketing

**Answer: D**

**Question 98**

**Market driven strategies include ---**

A Identifying problems

B Planning marketing tactics of peers

- C Positioning the Organisation and its brands in the market place
  - D Internal Marketing
  - E Selling old products
- Answer: C**

**Question 99**

**Innovation in Marketing is same as**

- A Motivation
- B Perspiration
- C Aspiration
- D Creativity
- E Team work

**Answer: D**

## SBI PO Solved Previous Papers (Download PDF)

**Question 100**

**Personal Loans can be canvassed among---**

- A Salaried persons
- B Pensioners
- C Foreign Nationals
- D NRI customers
- E Non-customers

**Answer: A**

**Get Free Study Material & Updates - Whatsapp "Updates" to 7661025557**

## Reasoning

**Instructions**

Four of the following five are alike in a certain way and hence form a group. Which one is that "does not" belong to the group?

**Question 101**

- 1
- A Break
  - B Change
  - C Split
  - D Divide

E Separate

**Answer: B**

**Explanation:**

Break means to make smaller pieces of something using force.

Split, divide and separate also mean making smaller parts of.

Change is the odd one out as it doesn't specify how the final product is with relation to the original.

## SBI PO Free Mocks (Latest Pattern)

**Question 102**

2

A Train

B Instruct

C Educate

D Advocate

E Coach

**Answer: D**

**Explanation:**

Train, instruct, educate and coach are ways of teaching something to someone. Advocate on the other hand is to support an idea or opinion.

**Question 103**

3

A Extend

B Higher

C Upward

D Rise

E Ascend

**Answer: A**

**Explanation:**

Higher, upward, rise and ascend imply to movement or growth towards the top. Extend can mean movement in any direction (downward as well)

**Instructions**

For the following questions answer them individually

**Question 104**

Which of the following symbols should replace the question mark in the given expression in order to mark the given expression 'A > D' as well as 'F ≥ C' definitely true?

$A > B \geq C ? D \leq E = F$

A >

- B <  
 C ≤  
 D =  
 E Either = or ≥

Answer: D

Explanation:

$$A > B \geq C ? D \leq E = F$$

A has to be greater than D, therefore ? could be >, = or ≥.

Since F needs to be greater than or equal to C, only possibility is "="

Hence option D.

## SBI Clerk Free Mock Test (Latest Pattern)

Question 105

In which of the following expressions 'R < P' as well as 'S > Q' be "definitely true?"

- A  $P > Q = R \leq T < S$   
 B  $S > T \geq R > Q < P$   
 C  $Q > R \leq T > P \geq S$   
 D  $S > T \geq R > Q > P$   
 E None of these

Answer: A

Explanation:

R should be less than P and S greater than Q.

Option A: Satisfies Both conditions

Option B: R is less than P but no definite relationship can be established between S and Q.

Option C: No definite relationship can be established between S and Q or R and P.

Option D: S is greater than Q but R is not less than P.

Hence A.

Question 106

Read the following information carefully and answer the question which follows:

If 'A × B' means 'A is the father of B'.

If 'A + B' means 'A is daughter of B'

If 'A ÷ B' means 'A is son of B'.

If 'A - B' means 'A is sister of B'.

What will come in the place of the question mark, to establish that P is the son-in-law of S in the expression ; 'P × Q + R - T ? S

- A +  
 B ×  
 C -  
 D ÷

E Either + or ÷

Answer: E

**Explanation:**

In the expression :  $P \times Q + R - T \div S$

P is the father of Q and Q is the daughter of R, => R is wife of P

Also, R is sister of T.

So, in order for P to be son in law of S, T must be the child of S

Now, both '+' and '÷' will fulfill the above condition because :

In case of '+', T is the daughter of S and in case of '÷', T is the son of S.

So, in both cases, P is son-in-law of S.

Ans - (E)

**Instructions**

Study the following information to answer the given questions:

Twelve people are sitting in two parallel rows containing six people each, in such a way that there is an equal distance between adjacent persons. In row-1 P, Q, R, S, T and V are seated and all of them are facing South. In row-2 A, B, C, D, E and F are seated and all of them are facing North. Therefore, in the given seating arrangement each member seated in a row faces another member of the other row.

S sits third to right of Q. Either S or Q sits at an extreme end of the line. The one who faces Q sits second to right of E. Two people sit between B and F. Neither B nor F sits at an extreme end of the line. The immediate neighbour of B faces the person who sits third to the left of P. R and T are immediate neighbours of each other. C sits second to the left of A. T does not face the immediate neighbour of D.

**Question 107**

Who amongst the following sit at extreme ends of the rows?

A S, D

B Q, A

C V, C

D P, D

E Q, F

Answer: D

**Explanation:**

Lets number the boxes from 1 to 12 as shown below to discuss the positions of the 12 people. S sits third to the right of Q and either of them sits at an extreme end. This is possible in 2 ways.

Case 1) Sits in 1 and Q in 4

Case 2) S sits in 3 and Q in 6

In Case 1, E sits in box 8. Now, there are 2 people sit between B and F and neither B nor F sit at the extreme end. That is not a possibility.

So, we proceed with case 2.

So, we can confirm that S sits in 3, Q sits in 6 and E sits in 10.

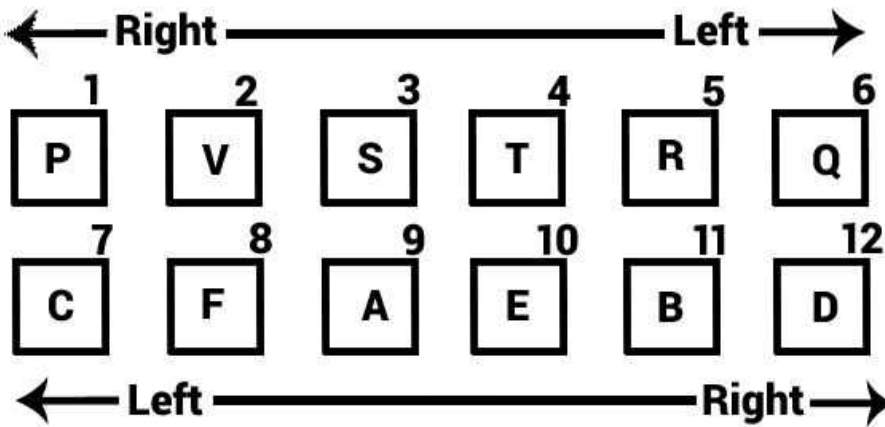
Positions of B and F create 2 cases.

Case 3) B sits in 8 and F sits in 11

Case 4) B sits in 11 and F sits in 8

Case 3 is impossible because the immediate neighbor of B faces the person who sits third to the left of P. Even if P is sitting in 1, The immediate neighbor of B has to face 4.

That is only possible if B is in 11 and P is in 1 or 3. Since S is already in 3, P should be in 1.  
 C sits second to the left of A. So, C is in 7 and A is in 9. D is therefore in 12.  
 R and T are immediate neighbors of each other. So, they should be in 4 and 5.  
 T doesn't face the immediate neighbor of D. So, T is in 4 and R is in 5. So, 2 is V.  
 The diagram therefore is as shown below:



That answers the question.

**SBI Clerk Previous Papers (Download PDF)**

**Question 108**

Who amongst the following faces S?

- A A
- B B
- C C
- D D
- E F

**Answer: A**

**Explanation:**

Lets number the boxes from 1 to 12 as shown below to discuss the positions of the 12 people. S sits third to the right of Q and either of them sits at an extreme end. This is possible in 2 ways.

Case 1) Sits in 1 and Q in 4

Case 2) S sits in 3 and Q in 6

In Case 1, E sits in box 8. Now, there are 2 people sit between B and F and neither B nor F sit at the extreme end. That is not a possibility.

So, we proceed with case 2.

So, we can confirm that S sits in 3, Q sits in 6 and E sits in 10.

Positions of B and F create 2 cases.

Case 3) B sits in 8 and F sits in 11

Case 4) B sits in 11 and F sits in 8

Case 3 is impossible because the immediate neighbor of B faces the person who sits third to the left of P. Even if P is sitting in 1, The immediate neighbor of B has to face 4.

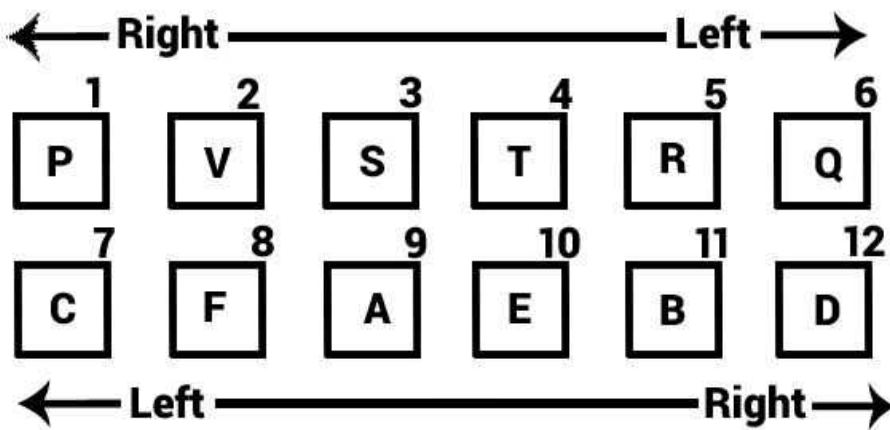
That is only possible if B is in 11 and P is in 1 or 3. Since S is already in 3, P should be in 1.

C sits second to the left of A. So, C is in 7 and A is in 9. D is therefore in 12.

R and T are immediate neighbors of each other. So, they should be in 4 and 5.

T doesn't face the immediate neighbor of D. So, T is in 4 and R is in 5. So, 2 is V.

The diagram therefore is as shown below:



That answers the question.

#### Question 109

How many persons are seated between V and R?

- A One
- B Two
- C Three
- D Four
- E None

Answer: B

#### Explanation:

Lets number the boxes from 1 to 12 as shown below to discuss the positions of the 12 people. S sits third to the right of Q and either of them sits at an extreme end. This is possible in 2 ways.

Case 1) Sits in 1 and Q in 4

Case 2) S sits in 3 and Q in 6

In Case 1, E sits in box 8. Now, there are 2 people sit between B and F and neither B nor F sit at the extreme end. That is not a possibility.

So, we proceed with case 2.

So, we can confirm that S sits in 3, Q sits in 6 and E sits in 10.

Positions of B and F create 2 cases.

Case 3) B sits in 8 and F sits in 11

Case 4) B sits in 11 and F sits in 8

Case 3 is impossible because the immediate neighbor of B faces the person who sits third to the left of P. Even if P is sitting in 1, The immediate neighbor of B has to face 4.

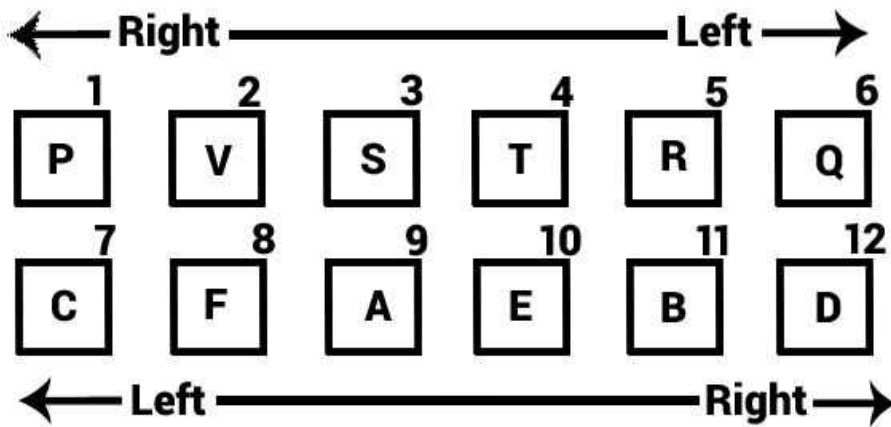
That is only possible if B is in 11 and P is in 1 or 3. Since S is already in 3, P should be in 1.

C sits second to the left of A. So, C is in 7 and A is in 9. D is therefore in 12.

R and T are immediate neighbors of each other. So, they should be in 4 and 5.

T doesn't face the immediate neighbor of D. So, T is in 4 and R is in 5. So, 2 is V.

The diagram therefore is as shown below:



That answers the question.

**Question 110**

P is related to A in the same way as S is related to B based on the given arrangement. To which of the following is T related to, following the same pattern ?

- A C
- B D
- C E
- D F
- E Cannot be determined

**Answer: B**

**Explanation:**

Lets number the boxes from 1 to 12 as shown below to discuss the positions of the 12 people. S sits third to the right of Q and either of them sits at an extreme end. This is possible in 2 ways.

Case 1) S sits in 1 and Q in 4

Case 2) S sits in 3 and Q in 6

In Case 1, E sits in box 8. Now, there are 2 people sit between B and F and neither B nor F sit at the extreme end. That is not a possibility.

So, we proceed with case 2.

So, we can confirm that S sits in 3, Q sits in 6 and E sits in 10.

Positions of B and F create 2 cases.

Case 3) B sits in 8 and F sits in 11

Case 4) B sits in 11 and F sits in 8

Case 3 is impossible because the immediate neighbor of B faces the person who sits third to the left of P. Even if P is sitting in 1, The immediate neighbor of B has to face 4.

That is only possible if B is in 11 and P is in 1 or 3. Since S is already in 3, P should be in 1.

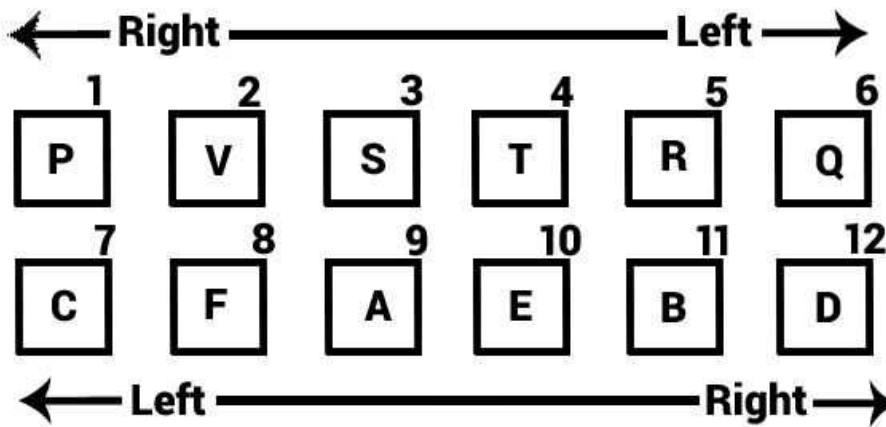
C sits second to the left of A. So, C is in 7 and A is in 9. D is therefore in 12.

R and T are immediate neighbors of each other. So, they should be in 4 and 5.

T doesn't face the immediate neighbor of D. So, T is in 4 and R is in 5. So, 2 is V.

The diagram therefore is as shown below:





That answers the question.

## Banking Daily Free Topic Test

### Question 111

Which of the following is "true" regarding T?

- A F faces T
- B V is an immediate neighbour of T
- C F faces the one who is second to right of T
- D T sits at one of the extreme ends of the line
- E Q sits second to the right of T

**Answer: C**

### Explanation:

Lets number the boxes from 1 to 12 as shown below to discuss the positions of the 12 people. S sits third to the right of Q and either of them sits at an extreme end. This is possible in 2 ways.

Case 1) S sits in 1 and Q in 4

Case 2) S sits in 3 and Q in 6

In Case 1, E sits in box 8. Now, there are 2 people sit between B and F and neither B nor F sit at the extreme end. That is not a possibility.

So, we proceed with case 2.

So, we can confirm that S sits in 3, Q sits in 6 and E sits in 10.

Positions of B and F create 2 cases.

Case 3) B sits in 8 and F sits in 11

Case 4) B sits in 11 and F sits in 8

Case 3 is impossible because the immediate neighbor of B faces the person who sits third to the left of P. Even if P is sitting in 1, The immediate neighbor of B has to face 4.

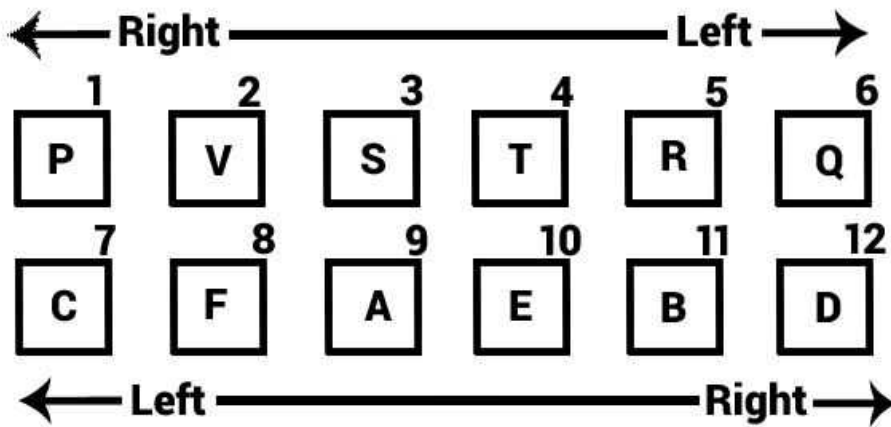
That is only possible if B is in 11 and P is in 1 or 3. Since S is already in 3, P should be in 1.

C sits second to the left of A. So, C is in 7 and A is in 9. D is therefore in 12.

R and T are immediate neighbors of each other. So, they should be in 4 and 5.

T doesn't face the immediate neighbor of D. So, T is in 4 and R is in 5. So, 2 is V.

The diagram therefore is as shown below:



That answers the question.

**Question 112**

Four of the following five are alike in a certain way based on the given arrangement and so form a group. Which is the one that "does not" belong to that group?

- A A - T
- B B - T
- C F - P
- D C - V
- E E - Q

**Answer:** E

**Explanation:**

Lets number the boxes from 1 to 12 as shown below to discuss the positions of the 12 people. S sits third to the right of Q and either of them sits at an extreme end. This is possible in 2 ways.

Case 1) S sits in 1 and Q in 4

Case 2) S sits in 3 and Q in 6

In Case 1, E sits in box 8. Now, there are 2 people sit between B and F and neither B nor F sit at the extreme end. That is not a possibility.

So, we proceed with case 2.

So, we can confirm that S sits in 3, Q sits in 6 and E sits in 10.

Positions of B and F create 2 cases.

Case 3) B sits in 8 and F sits in 11

Case 4) B sits in 11 and F sits in 8

Case 3 is impossible because the immediate neighbor of B faces the person who sits third to the left of P. Even if P is sitting in 1, The immediate neighbor of B has to face 4.

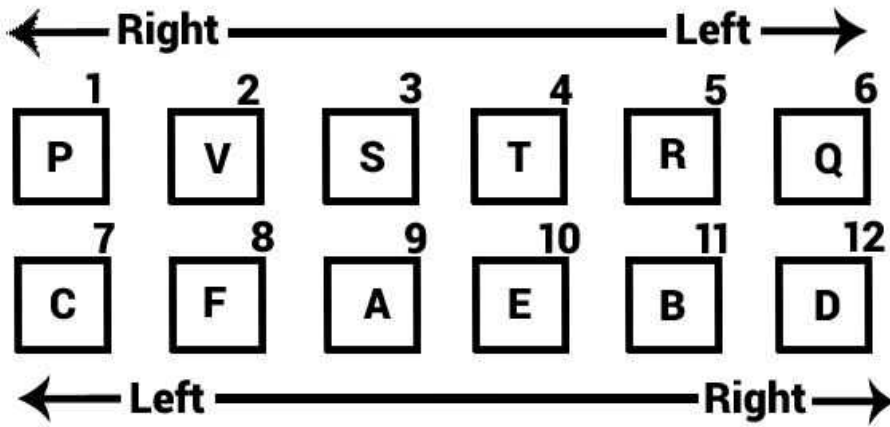
That is only possible if B is in 11 and P is in 1 or 3. Since S is already in 3, P should be in 1.

C sits second to the left of A. So, C is in 7 and A is in 9. D is therefore in 12.

R and T are immediate neighbors of each other. So, they should be in 4 and 5.

T doesn't face the immediate neighbor of D. So, T is in 4 and R is in 5. So, 2 is V.

The diagram therefore is as shown below:



That answers the question.

**Instructions**

Each of these questions below consists of a question and two statements numbered I and II given below it. You have to decide whether the data provided in the statements are sufficient to answer the question. Read both the statements and -

**Question 113**

Which bag amongst P, Q, R, S and T is the heaviest?

I. Bag Q is heavier than R and S. Bag T is the heavier only than bag P.

II. Only three bags are lighter than R. The weight of bag Q is 50 kg which is 2 kg more than bag R.

- A if the data in statement I alone are sufficient to answer the question, while the data in statement II alone are not sufficient to answer the question.
- B if the data in statement II alone are sufficient to answer the question, while the data in statement I alone are not sufficient to answer the question.
- C if the data either in statement I alone or in statement II alone are sufficient to answer the question.
- D if the data even in both statements I and II together are not sufficient to answer the question.
- E if the data in both statements I and II together are necessary to answer the question.

**Answer: C**

**Explanation:**

I : T is heavier than only P. => T is the 4th heaviest bag and P is the least.

Of, the remaining three, it is given that, Q is heavier than both. Thus, Q is the heaviest bag.

$$Q > R, S > T > P$$

**Thus, I alone is sufficient.**

II : Only three bags are lighter than R. => R is the second heaviest bag.

It is also given that Q is heavier than R, thus, Q is the heaviest bag.

$$Q > R > S, T, P$$

**Thus, II alone is sufficient.**

**Question 114**

Are all the five friends viz. A, B, C, D and E who are seated around a circular table facing the centre?

I. A sits third to the left of B. B faces the centre. D and E are immediate neighbours, of each other. C sits second to the right of E.

II. D sits second to the right of C. C faces the centre. E sits second to right of A and C sits second to the left of D.

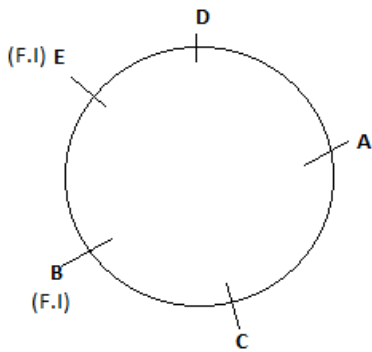
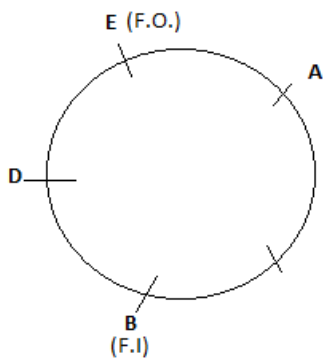
- A if the data in statement I alone are sufficient to answer the question, while the data in statement II alone are not sufficient to answer the question.
- B if the data in statement II alone are sufficient to answer the question, while the data in statement I alone are not sufficient to answer the question.
- C if the data either in statement I alone or in statement II alone are sufficient to answer the question.
- D if the data even in both statements I and II together are not sufficient to answer the question.
- E if the data in both statements I and II together are necessary to answer the question.

**Answer: E**

**Explanation:**

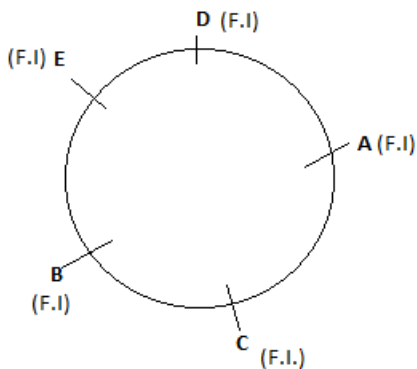
A sits third to the left of B. B faces the centre. D and E are immediate neighbours, of each other. C sits second to the right of E.

The following cases are possible : (F.O - Facing Outward, F.I - Facing Inward)



From 1st statement only these two cases can be thought now, in 2nd statement it is given that D sits second to the right of C. C faces the centre. E sits second to right of A and C sits second to the left of D

the possible arrangement is



Question 115

In a college five different subjects, viz. Physics, Chemistry, Botany, Zoology and Mathematics are taught on five different days of the same week, starting from Monday and ending on Friday. Is chemistry taught on Wednesday?

I. Two subjects are taught between Zoology and Mathematics. Mathematics is taught before Zoology. Chemistry is taught on the day immediately next to the day when Physics is taught. Botany is not taught on Friday.

II. Three lectures are scheduled between the lectures of Botany and Zoology. Mathematics is taught immediately before Physics.

- A if the data in statement I alone are sufficient to answer the question, while the data in statement II alone are not sufficient to answer the question.
- B if the data in statement II alone are sufficient to answer the question, while the data in statement I alone are not sufficient to answer the question.
- C if the data either in statement I alone or in statement II alone are sufficient to answer the question.
- D if the data even in both statements I and II together are not sufficient to answer the question.
- E if the data in both statements I and II together are necessary to answer the question.

**Answer: C**

**Explanation:**

I : In statement I alone, there is a gap of two classes between Maths and Zoology and Maths is taught earlier. Therefore, maths can be taught either on Monday or Tuesday.

case 1 : Maths on Monday, => Zoology will be taught on Thursday. Since, Phy and Chem are taught on consecutive days, they will be taught on Tue and Wed

respectively. This leaves us with Botany on Friday, which is not possible as per the question.

∴ this case is invalid.

case 2 : Maths on Tuesday, => Zoology will be taught on Friday. Since, Phy and Chem are taught on consecutive days, they will be taught on Wed and Thurs

respectively. This leaves us with Botany on Monday.

Thus, we have

Monday - Botany

Tuesday - Maths

Wednesday - Physics

Thursday - Chemistry

Friday - Zoology

Ans - No, chemistry is not taught on Wednesday.

**Thus, I alone is sufficient.**

II : Since, three lectures are scheduled between Botany and Zoology, these 2 will be taught on Monday & Friday with any subject on either day.

Maths and Physics are taught on consecutive days. Thus, maths can be taught either on Tuesday or Wednesday.

case 1 : Tuesday - Maths

Wednesday - Physics

Thursday - Chemistry

case 2 : Tuesday - Chemistry

Wednesday - Maths

Thursday - Physics

Thus, in both cases, Chemistry is not taught on Wednesday.

Thus, II alone is sufficient.

#### Question 116

Is the time in the clock 9 O' clock now?

- I. After half an hour, the minute and the hour hands of the clock will make an angle of exactly 90° with each other.  
II. Exactly 15 minutes back, the hour and the minute's hand of the clock coincided with each other.

- A if the data in statement I alone are sufficient to answer the question, while the data in statement II alone are not sufficient to answer the question.  
B if the data in statement II alone are sufficient to answer the question, while the data in statement I alone are not sufficient to answer the question.  
C if the data either in statement I alone or in statement II alone are sufficient to answer the question.  
D if the data even in both statements I and II together are not sufficient to answer the question.  
E if the data in both statements I and II together are necessary to answer the question.

**Answer: C**

**Explanation:**

NOTE :- Angle between hour and minute hand in a clock =  $|30 * H - \frac{11}{2} * M|$ , where M -> minutes & H -> hour.

I : Lets assume time now is 9 o' clock. Then after half hour, time will be 9:30.

$$\text{Angle between hour and minute hand at 9:30} = 30 * 9 - \frac{11}{2} * 30 = 105$$

Since, angle formed is not 90. It contradicts our assumption.

∴ Ans - Time now is not 9 o' clock.

**I alone is sufficient.**

II : Lets assume time now is 9 o' clock. Then 15 minutes back, time will be 8:45

$$\text{Angle between hour and minute hand at 8:45} = |30 * 8 - \frac{11}{2} * 45| = |-7.5| = 7.5$$

Since, angle formed is not 0. It contradicts our assumption.

∴ Ans - Time now is not 9 o' clock.

**II alone is sufficient.**

**Download Highly Rated Banking APP**

#### Question 117

Is F the granddaughter of B?

- I. B is the father of M. M is the sister of T. T is the mother of F.  
II. S is the son of F. V is the daughter of F. R is the brother of T?

- A if the data in statement I alone are sufficient to answer the question, while the data in statement II alone are not sufficient to answer the question.  
B if the data in statement II alone are sufficient to answer the question, while the data in statement I alone are not sufficient to answer the question.  
C if the data either in statement I alone or in statement II alone are sufficient to answer the question.  
D if the data even in both statements I and II together are not sufficient to answer the question.

E if the data in both statements I and II together are necessary to answer the question.

**Answer: D**

**Explanation:**

I : In this statement, we know that F is the grandchild of B. But we do not know the gender of F.

Hence, I alone is not sufficient.

II : There isn't any info about B.

Hence, II alone is not sufficient.

---

I & II : Even after combining both statements, we just know that F is the child of T & F has two kids - S(male) & V(female)

We still do not know the gender of F. Hence, F can / can't be the granddaughter of B.

Thus, I & II are **not** sufficient.

**Instructions**

Study the following information to answer the given questions.

A word and number arrangement machine when given an input line of words and numbers rearranges them following a particular rule in each step. The following is an illustration of input and rearrangement. "(All the numbers are two digits numbers and are arranged as per some logic based on the value of the number)".

Input : win 56 32 93 bat for 46 him 28 11 give chance.

Step I : 93 56 32 bat for 46 him 28 11 give chance win

Step II : 11 93 56 32 bat for 46 28 give chance win him

Step III: 56 11 93 32 bat for 46 28 chance win him give

Step IV: 28 56 11 93 32 bat 46 chance win him give for

Step V: 46 28 56 11 93 32 bat win him give for chance

Step V: 32 46 28 56 11 93 win him give for chance bat

and Step VI is last step of the arrangement of the above input as the intended arrangement is obtained.

As per the rules followed in the above steps, find out in each of the following questions the appropriate steps for the given input, Input for the questions:

Input : "fun 89 at the 28 16 base camp 35 53 here 68" (All the numbers given in the arrangement are two digit numbers.)

**Question 118**

**Which of the following would be the Step II?**

A 89 fun at 28 16 base camp 35 53 here 68 the

B 35 53 28 68 16 89 the here fun camp base at

C 16 89 at fun 28 camp base 35 53 68 the here

D 53 28 68 16 89 35 the here fun camp base at

E None of these

**Answer: E**

**Explanation:**

The pattern here followed is that in the first step, the largest number is placed at first position and the word with greatest first letter according to the English alphabetical series is placed at last position.

In second step, the smallest number is placed at first position while in the last position word with greatest first letter according to the English alphabetical series is placed.

INPUT : fun 89 at the 28 16 base camp 35 53 here 68

Step I : 89 fun at 28 16 base camp 35 53 here 68 the

Step II : 16 89 fun at 28 base camp 35 53 68 the here

Step III : 68 16 89 at 28 base camp 35 53 the here fun

Step IV : 28 68 16 89 at base 35 53 the here fun camp



Step V : 53 28 68 16 89 at 35 the here fun camp base

Step VI : 35 53 28 68 16 89 the here fun camp base at

=> None of the given options matches Step II

=> Ans - (E)

#### Question 119

Which word/number would be at 7th position from the left in Step IV?

- A base
- B at
- C 35
- D the
- E 53

Answer: C

#### Explanation:

The pattern here followed is that in the first step, the largest number is placed at first position and the word with greatest first letter according to the English alphabetical series is placed at last position.

In second step, the smallest number is placed at first position while in the last position word with greatest first letter according to the English alphabetical series is placed.

INPUT : fun 89 at the 28 16 base camp 35 53 here 68

Step I : 89 fun at 28 16 base camp 35 53 here 68 the

Step II : 16 89 fun at 28 base camp 35 53 68 the here

Step III : 68 16 89 at 28 base camp 35 53 the here fun

Step IV : 28 68 16 89 at base 35 53 the here fun camp

Step V : 53 28 68 16 89 at 35 the here fun camp base

Step VI : 35 53 28 68 16 89 the here fun camp base at

=> In step IV, 7th position from left = 35

## SBI PO Solved Previous Papers (Download PDF)

#### Question 120

Which step number would be the following output?

53 28 68 16 89 at 35 the here fun camp base

- A There will be no such step
- B III
- C II
- D V
- E IV

Answer: D

#### Explanation:

The pattern here followed is that in the first step, the largest number is placed at first position and the word with greatest first letter according to the English alphabetical series is placed at last position.



In second step, the smallest number is placed at first position while in the last position word with greatest first letter according to the English alphabetical series is placed.

INPUT : fun 89 at the 28 16 base camp 35 53 here 68

Step I : **89** fun at 28 16 base camp 35 53 here 68 **the**

Step II : **16** 89 fun at 28 base camp 35 53 68 the **here**

Step III : **68** 16 89 at 28 base camp 35 53 the here **fun**

Step IV : **28** 68 16 89 at base 35 53 the here fun **camp**

Step V : **53** 28 68 16 89 at 35 the here fun camp **base**

Step VI : **35** 53 28 68 16 89 the here fun camp base **at**

Clearly, 53 28 68 16 89 at 35 the here fun camp base = Step V

Ans - (D)

### Instructions

Study the following information carefully and answer the given questions.

Eight colleagues, A, B, C, D, E, F, G and H are sitting around a circular table facing the centre but not necessarily in the same order. Each one of them holds a different post viz. Manager, Company Secretary, Chairman, President, Vice-President, Group Leader, Financial Advisor and Managing Director.

A sits third to right of the Managing Director. Only two people sit between the Managing Director and H. Vice President and the Company Secretary are immediate neighbours of each other. Neither A nor H is a Vice President or a company secretary. Vice President is not an immediate neighbour of the Managing Director. Manager sits second to left of E. E is not an immediate neighbour of H. The manager is an immediate neighbour of both Group Leader and the Financial Advisor. Financial Advisor sits third to right of B. B is not the Vice President. C sits to the immediate right of the Chairman. A is not the Chairman. F is not an immediate neighbour of A. G is not an immediate neighbour of the Manager.

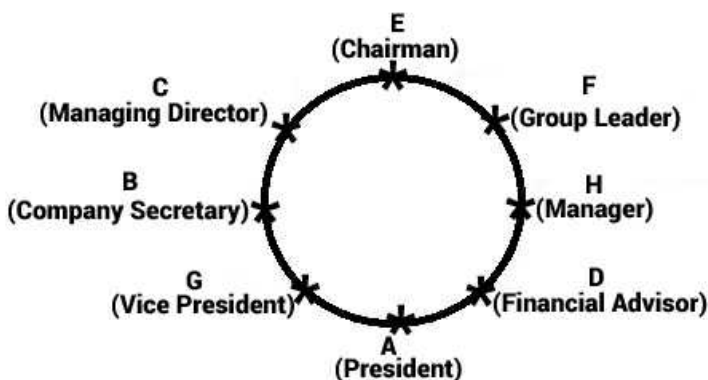
### Question 121

Who amongst the following sits third to the left of E?

- A The Manager
- B G
- C A
- D The Financial Advisor
- E B

Answer: D

Explanation:



D, the Financial Advisor, sits to third to the left of E as shown in the diagram above.

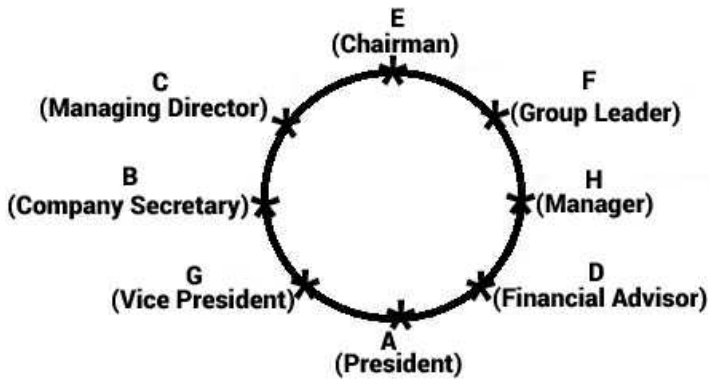
### Question 122

Four of the following five are alike in a certain way based on the given arrangement and thus form a group. Which is the one that "does not" belong to that group?

- A F - Chairman
- B G - President
- C D - Manager
- D A - Financial Advisor
- E B - Managing Director

Answer: E

Explanation:



All the options have a person and the position to his right except B where we have the position to his left.

**Get Free Study Material & Updates - Whatsapp "Updates" to 766102557**

Question 123

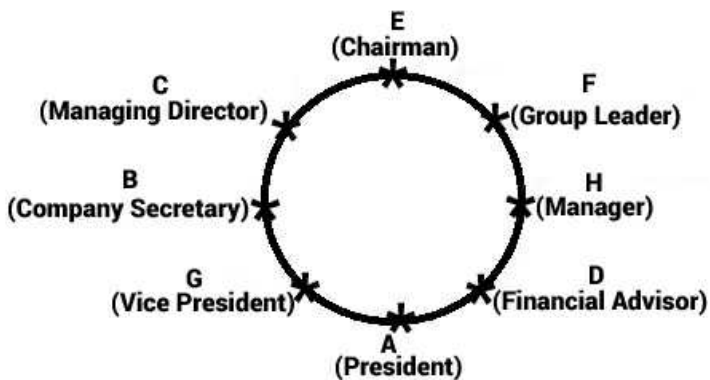
Who amongst the following is the President of the company?

- A A
- B C
- C H
- D G
- E D

Answer: A

Explanation:

Based on the information provided in the question, the diagram is as follows:



So, A is the President of the company.

**Question 124**

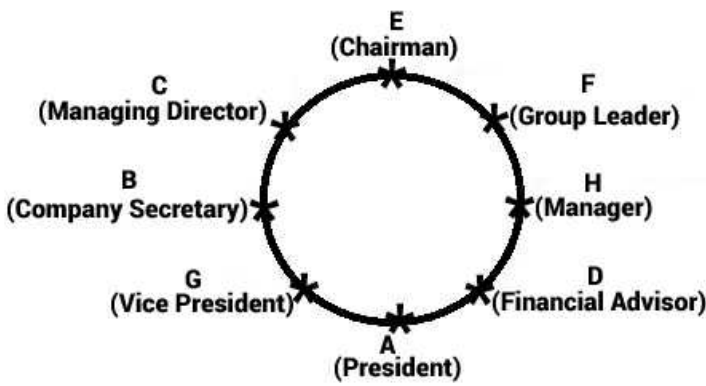
Which of the following is "true" with respect to the given seating arrangement?

- A The Group Leader of the company is an immediate neighbour of the Vice-President
- B G sits second to the right of D
- C The Group Leader and the company secretary are immediate neighbours of each other
- D The Chairman of the company sits to the immediate left of the Managing Director
- E The Group Leader sits second to the left of D

**Answer: D**

**Explanation:**

Based on the information provided in the question, the diagram is as follows:



Thus, we can observe that the Chairman of the company sits to the immediate left of the Managing Director

**Question 125**

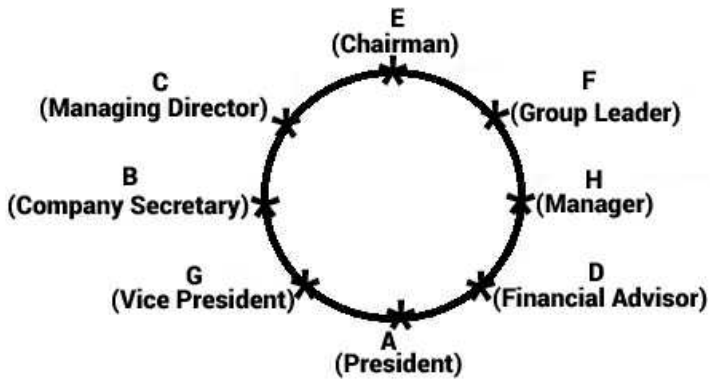
Which of the following posts does B hold in the company?

- A Chairman
- B Manager
- C Company Secretary
- D Vice-President
- E Financial Advisor

**Answer: C**

**Explanation:**

Based on the information provided in the question, the diagram is as follows:



So, B is the Company Secretary in the firm.

## SBI PO Free Mocks (Latest Pattern)

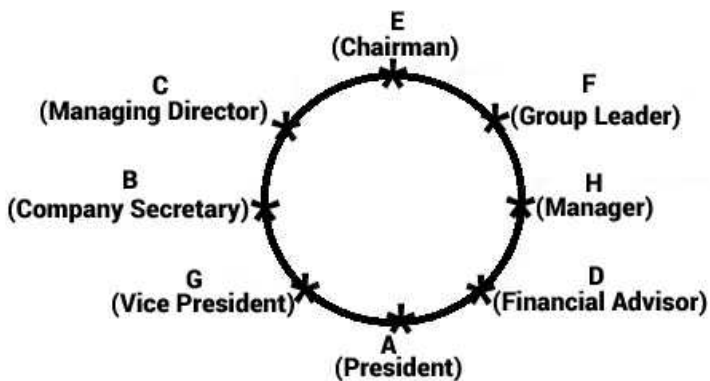
Question 126

Who amongst the following sits exactly between the Managing Director and H?

- A H and the Chairman
- B B and G
- C The Chairman and C
- D F and C
- E E and the Group Leader

Answer: E

Explanation:



Based on the diagram, E (Chairman) and F (Group leader) are seated between C (Managing Director) and H (Manager)

Question 127

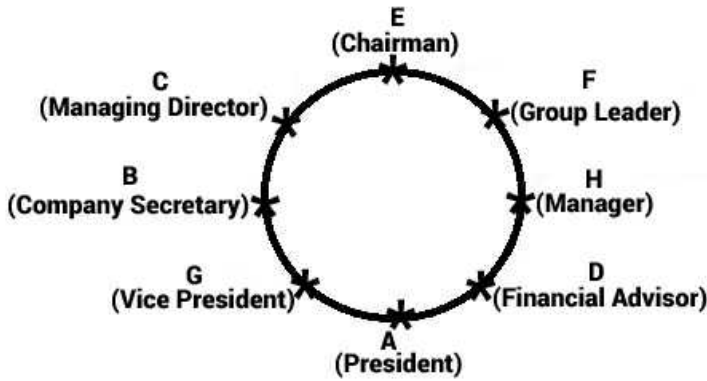
Who amongst the following is the Group Leader?

- A C
- B F
- C G
- D H
- E A

Answer: B

**Explanation:**

Based on the information provided in the question, the positions of the group are as follows:



So, F is the group leader.

**Instructions**

Read the following information and sentences 1, 2, 3, 4 and 5 given below it carefully and answer the questions which follow:

"A host of foreign companies are in talks with the Indian government for selling B 150, a tough short haul plane ideal for connectivity of smaller towns which is lacking in India at present.

A. B 150 planes not only have low operating costs than competing planes like Cezana but also a much better track record in terms of safety and efficiency.

B. The profit margin of road transport operators in the smaller towns connected by B 150 planes has been reduced substantially as a majority of people prefer air transport over other means of transport.

C. Smaller towns, at present, are better connected by roads and railways as compared to flight services

D. B 150 planes are capable of operating in sectors where large airlines cannot fly due to challenging conditions such as mist, short runways, etc. Such planes can also double up as cargo planes and charter flights for the rich and the elite.

E. B 150 planes need to operate in the existing airports which are situated in bigger cities only and are poorly connected to the smaller cities.

**Question 128**

Which of the statements A, B, C, D and E can be inferred from the facts/information given in the statement?

(An "inference" is something which is not directly but can be inferred from the given facts.)

- A Only A
- B Only B
- C Only C
- D Both B and D
- E Only E

Answer: D

## SBI Clerk Free Mock Test (Latest Pattern)

**Question 129**

Which of the statements A, B, C, D and E mentioned above would weaken the offer made by the foreign companies for selling B 150 planes to "Indian" government?

- A A
- B B
- C C
- D D

E E

Answer: C

**Question 130**

Which of the statements A, B, C, D and E mentioned above represents a possible "consequence" of the success of B 150 planes in smaller cities?

A A

B B

C C

D D

E E

Answer: B

**Question 131**

Which of the statements A, B, C, D and E would "favour" the foreign companies bid to sell B 150 planes in India?

A Only A

B Only B

C Both B and C

D Both A and D

E Both E and C

Answer: D

## SBI Clerk Previous Papers (Download PDF)

**Instructions**

Study the following information to answer the given questions:

In a certain code,

'always create new ideas' is written as 'ba ri sha gi',

'ideas and new thoughts' is written as 'fa gi ma ri',

'create thoughts and insights' is written as 'ma jo ba fa and

'new and better solutions' is written as 'ki ri to fa' and

**Question 132**

What is the code for 'ideas'?

A sha

B ba

C gi

D ma

E Cannot be determined

Answer: C

**Explanation:**

From 1st and 3rd, common word is create coded as 'ba'

From 1st and 4th, common word new is coded as 'ri'

From 1st and 2nd, there are two common words ideas & new coded as 'ri' or 'gi'

=> Since, we know the code for new, => ideas is coded as 'gi'

**Question 133**

**What does 'fa' stand for?**

- A thoughts
- B insights
- C new
- D and
- E solutions

**Answer: D**

**Explanation:**

From 1st and 3rd, common word is create coded as 'ba'

From 1st and 4th, common word new is coded as 'ri'

From 2nd and 4th, there are two common words and & new coded as 'ri' or 'fa'

=> Since, we already know the code for new, => and is coded as 'fa'

**Question 134**

**'fa lo ba' could be a code for which of the following?**

- A thoughts and action
- B create and innovate
- C ideas and thoughts
- D create new solutions
- E always better ideas

**Answer: B**

**Explanation:**

From 1st and 3rd, common word is create coded as 'ba'

From 1st and 4th, common word new is coded as 'ri'

From 2nd and 4th, there are two common words and & new coded as 'ri' or 'fa'

=> Since, we know the code for new, => and is coded as 'fa'

Now, the code word 'lo' is not used in these statements, thus we need to find the option which contains a new word i.e. not used in the above sentences.

Thus, Ans - (B)

**Banking Daily Free Topic Test**

**Question 135**

**What is the code for 'new'?**



- A ki
- B ri
- C to
- D fa
- E ba

**Answer: B**

**Explanation:**

From 1st and 3rd, common word is create coded as 'ba'

From 1st and 4th, common word new is coded as 'ri'

**Question 136**

**Which of the following may represent 'insights always' better?**

- A jo ki to
- B ki to ri
- C sha jo ri
- D to sha jo
- E sha to ba

**Answer: D**

**Explanation:**

From 1st and 3rd, common word is create coded as 'ba'

From 1st and 4th, common word new is coded as 'ri'

From 1st and 2nd, there are two common words ideas & new coded as 'ri' or 'gi'

=> Since, we know the code for new, => ideas is coded as 'gi'

Now, from 1st, only word left is 'always' coded as '**sha**'

From 2nd and 4th, there are two common words and & new coded as 'ri' or 'fa'

=> Since code for new is known, => and is coded as 'fa'

Now, from 2nd and 3rd, thoughts is coded as 'ma'

Now, from 3rd, only word left is 'insights' coded as '**jo**'

From 4th, there are two words left, i.e. better and solutions coded as 'to' or 'ki'

=> better is coded as either '**to**' or '**ki**'

∴ we need to find the solution which contains 'sha', 'jo' & either 'to' or 'ki'

Thus, Ans - (D)

**Question 137**

**What is the code for 'thoughts'?**

- A ma
- B fa
- C ba



D jo

E Either jo or fa

**Answer: A**

**Explanation:**

From 1st and 3rd, common word is create coded as 'ba'

From 1st and 4th, common word new is coded as 'ri'

From 1st and 2nd, there are two common words ideas & new coded as 'ri' or 'gi'

=> Since, we know the code for new, => ideas is coded as 'gi'

Now, from 1st, only word left is 'always' coded as 'sha'

From 2nd and 4th, there are two common words and & new coded as 'ri' or 'fa'

=> Since code for new is known, => and is coded as 'fa'

Now, from 2nd and 3rd, thoughts is coded as 'ma'

**Instructions**

For the following questions answer them individually

**Question 138**

**Read the following information carefully and answer the question which follows:**

**"All existing and upcoming hotels within the 5 km radius of national parks and sanctuaries in India will have to pay 30% of their annual turnover as tax to the government".**

**Which of the following statements can be "inferred" from the facts/information given in the above statement?**

- A The tax collected from the hotels will be used for upkeep of these national parks and sanctuaries.
- B Hotels which are sponsored by the government will not have to pay any tax even if these are located within the 5 km radius of such wildlife hotspots
- C Ecosystem of the national parks and sanctuaries is adversely affected even if the hotels are located outside the 5 km radius.
- D Government allows the construction of hotels within 5 km radius of national parks and sanctuaries
- E Such a step is taken by the environment ministry to boost, eco-tourism and perk up revenue collection of State governments.

**Answer: E**

**Question 139**

**Read the following paragraph and answer the question which follows.**

**'Tenants associations have demanded a 'vacancy tax' on all vacant and unsold flats in Mumbai.'**

**Which of the following would 'support' the demand made by the tenant's association?**

- A House owners too have demanded for laws that make it easier to evict tenants who default on rent payment.
- B Such a tax law would be difficult to implement as it would be difficult to record the number of vacant flats in the city.
- C People with surplus money buy many houses and rent these out while many consumers cannot afford even their first house.
- D The number of vacant flats in Mumbai is much lower than other metros such as Delhi and Chennai where vacancy tax already exists.
- E Such a tax would compel the house owners to sell/rent properties which in turn would control hoarding and sky rocketing of property prices.

**Answer: E**

**Explanation:**

Tenants associations have demanded a 'vacancy tax' on all vacant and unsold flats in Mumbai. The statement that will support the demand can be that having such taxes will make the owners to sell or rent properties which can control the inflation of property prices.

Thus, the last statement supports the demand made by the tenant's association.

=> Ans - (E)

**Instructions**

In each questions below are two/three statements followed by two conclusions numbered I and II. You have to take the two/three given statements to be true even if they seem to be at variance from commonly known facts and then decide which one of the given conclusions logically follows from the given statements disregarding commonly known facts.

**Question 140**

**Statements:** All rings are circles. All squares are rings. No ellipse is a circle.

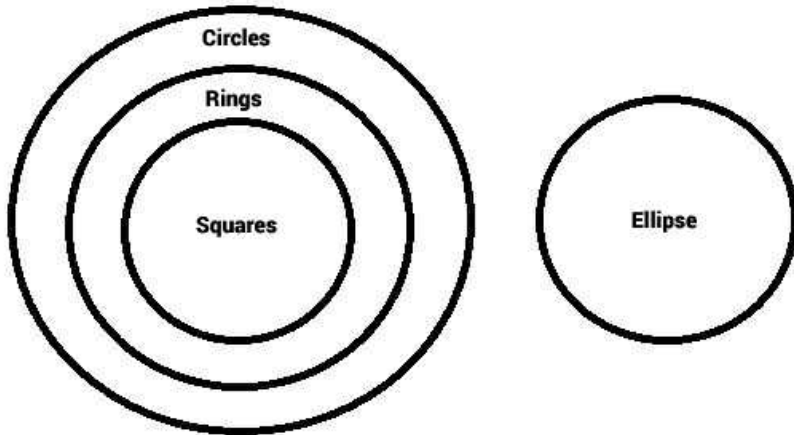
**Conclusions:** I. Some rings being ellipses is a possibility  
II. Atleast some circles are squares.

- A if only conclusion I follows
- B if only conclusion II follows
- C if either conclusion I or conclusion II follows
- D if neither conclusion I nor conclusion II follows
- E if both conclusion I and conclusion II follow

**Answer:** B

**Explanation:**

The Venn diagram for the Syllogism is as follows:



Based on the diagram, some rings being ellipses is not a possibility. But atleast some circles are squares. Hence (B) is the answer

**Download Highly Rated Banking APP**

**Question 141**

**Statements:** Some house is bungalows. Some bungalows are apartments.

**Conclusion:** I. No house is a bungalow.  
II. All bungalows are houses.

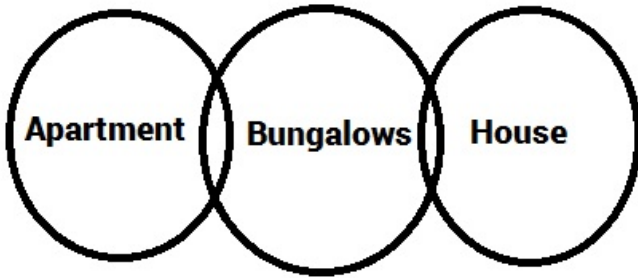
- A if only conclusion I follows
- B if only conclusion II follows

- C if either conclusion I or conclusion II follows
- D if neither conclusion I nor conclusion II follows
- E if both conclusion I and conclusion II follow

Answer: D

**Explanation:**

We choose a Venn diagram that contradicts both the conclusions. It still satisfies all the statements. Hence the answer is (d)



**Question 142**

**Statements:** Some gases are liquids. All liquids are water.

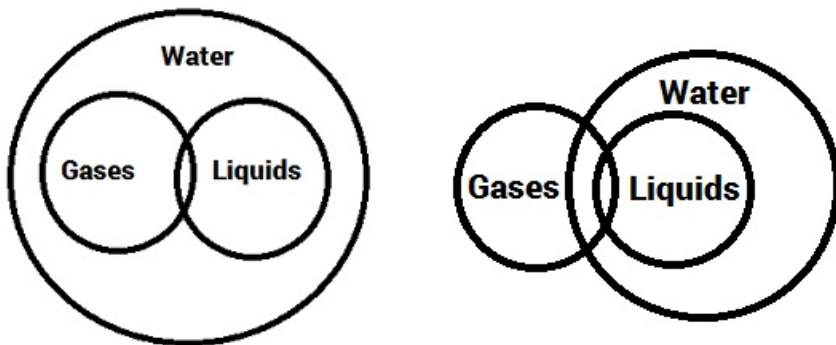
- Conclusions I.** All gases being water is a possibility.
- II.** All such gases which are not water can never be liquid.

- A if only conclusion I follows
- B if only conclusion II follows
- C if either conclusion I or conclusion II follows
- D if neither conclusion I nor conclusion II follows
- E if both conclusion I and conclusion II follow

Answer: E

**Explanation:**

The Venn diagram for the given syllogism is as follows:



In the left diagram, we draw a Venn diagram that satisfies all the statements. So, conclusion I is implied.

In the right diagram, we draw a Venn diagram that satisfies all the statements. All such gases which are not water can never be liquid is implied.

Hence the answer is (e)

Question 143

Statements: All minutes are seconds. All seconds are hours. No second is a day.

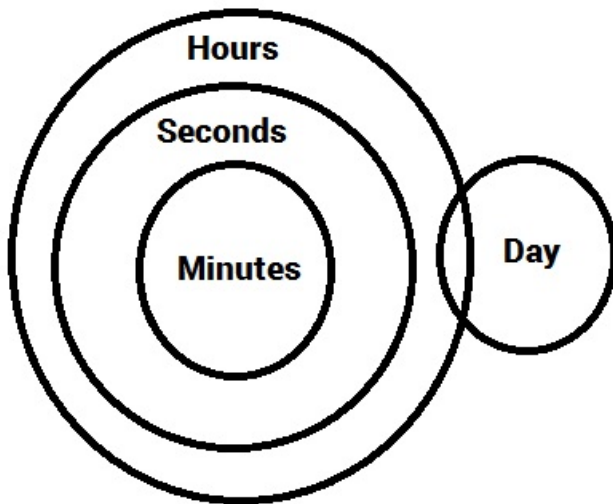
Conclusion: I. No day is an hour  
II. Atleast some hours are minutes.

- A if only conclusion I follows
- B if only conclusion II follows
- C if either conclusion I or conclusion II follows
- D if neither conclusion I nor conclusion II follows
- E if both conclusion I and conclusion II follow

Answer: B

Explanation:

The Venn diagram that satisfies the statements and best explains the conclusions is as follows:



We can observe that some days can be hours. Hence conclusion I is not implied.

Also at least some hours are always minutes. This is because minutes is a sub set of hours.

## SBI PO Solved Previous Papers (Download PDF)

Question 144

Some teachers are professors.

Some lecturers are teachers.

Conclusions: I. All teachers as well as all professors being lecturers is a possibility.

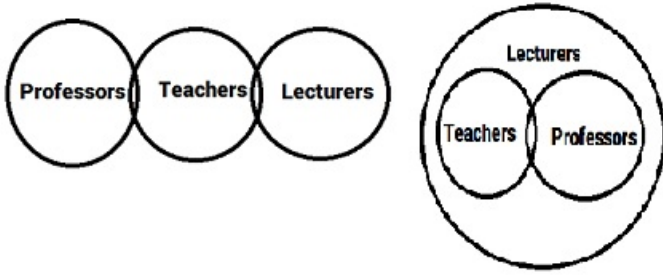
II. All those teachers who are lecturers are also professors.

- A if only conclusion I follows
- B if only conclusion II follows
- C if either conclusion I or conclusion II follows
- D if neither conclusion I nor conclusion II follows
- E if both conclusion I and conclusion II follow

Answer: A

**Explanation:**

The Venn diagram that satisfies the statements and best explains the conclusions is as follows:



In the figure on the right, all the statements are satisfied and teachers and professors are subsets of lecturers. So, conclusion I is implied.

To contradict conclusion II, we draw the diagram on the left. All those teachers who are lecturers are not necessarily professors. Hence the answer is (a)

**Question 145**

Some teachers are professors.

Some lecturers are teachers.

Conclusions: I. No professor is a lecturer.

II. All lecturers being professor is a possibility.

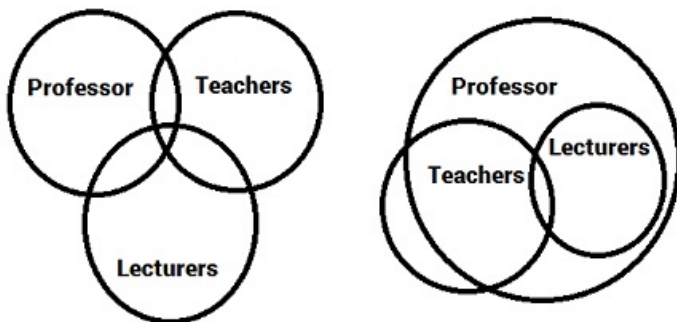
- A if only conclusion I follows
- B if only conclusion II follows
- C if either conclusion I or conclusion II follows
- D if neither conclusion I nor conclusion II follows
- E if both conclusion I and conclusion II follow

Answer: B

**Explanation:**

In the diagram on the left, all the statements are satisfied. It contradicts conclusion I. So, conclusion I is not implied.

In the diagram on the right, all the statements are satisfied. It supports conclusion II. So, conclusion II is implied.

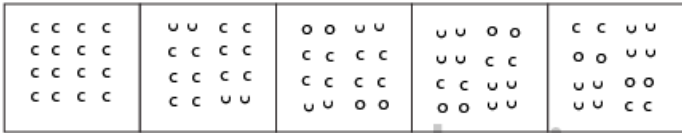


**Instructions**

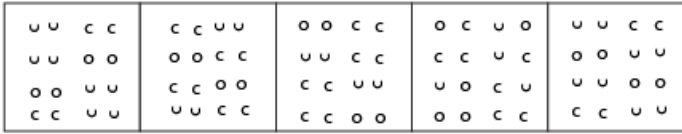
In each of the questions given below which one of the five answer figure should come after the problem figure, if the sequence were continued ?



**Problem figures**



**Answer figures**



- (1)      (2)      (3)      (4)      (5)

- A (1)
- B (2)
- C (3)
- D (4)
- E (5)

**Answer:** A

**Explanation:**

As we can see in the given problem figures that leftmost 2 designs of the first row and rightmost two designs of the last row are getting changed from the first figure itself.

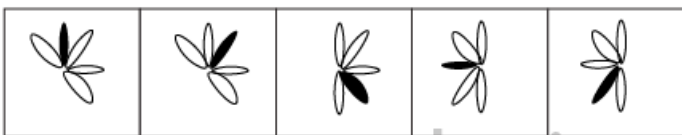
The change in the design has a pattern where it changes from "cc" to "uu" then "uu" to "oo" and then goes back to "uu" and "cc".

Now rightmost 2 designs of the first row and leftmost 2 designs of the last row will start changing according to the above-stated pattern from the 2nd problem figure.

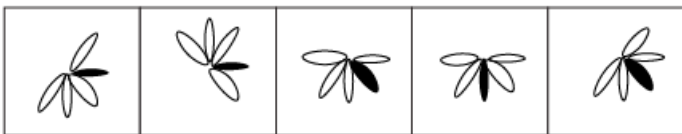
Similarly, 2nd row and 3rd-row designs will start changing from next figures according to the pattern mentioned already. Hence, answer will be A

**Get Free Study Material & Updates - Whatsapp "Updates" to 7661025557**

**Problem figures**



**Answer figures**



- (1)      (2)      (3)      (4)      (5)

- A (1)
- B (2)

- C (3)
- D (4)
- E (5)

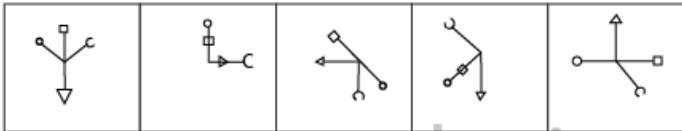
Answer: E

**Explanation:**

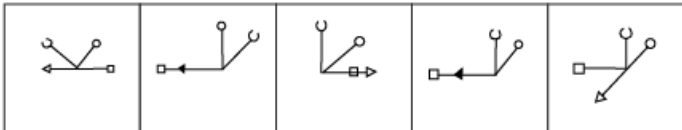
Given problem figures have a pattern for 2nd, 4th and 6th figure where design is getting rotated by 135 degrees without any changes in the darkened leaf. Hence, accordingly answer will be E

**Question 148**

**Problem figures**



**Answer figures**



- (1)
- (2)
- (3)
- (4)
- (5)

- A (1)
- B (2)
- C (3)
- D (4)
- E (5)

Answer: D

**Explanation:**

As we can see in the given problem figures that the individual designs with the line are getting changed according to different patterns.

The line with the arrow is rotating in the anticlockwise direction as 90 degrees, 180 degrees, 90 degrees, 180 degrees and so on.

The line with "u" is rotating in the clockwise direction as 45 degrees, 90 degrees, 135 degrees, 180 degrees and so on.

The line with a square is rotating in the anticlockwise direction as 0 degrees, 45 degrees, 90 degrees, 135 degrees, 180 degrees and so on.

Hence, according to the patterns described above answer will be D



Question 149

Problem figures

= HOLE				
--------	--	--	--	--

Answer figures

(1)	(2)	(3)	(4)	(5)

- A (1)
- B (2)
- C (3)
- D (4)
- E (5)

Answer: B

Explanation:

As we can see in the given problem figure that the whole design is rotating in the anticlockwise direction and with every rotation a letter is getting changed with the exchange of positions of other letters.

The position of changing letter is starting from the left-most to the right side and then to the topmost. Remaining letters are exchanging their positions in the sets of two letters. Hence, answer will be B

SBI PO Free Mocks (Latest Pattern)

Question 150

Problem figures

--	--	--	--	--

Answer figures

(1)	(2)	(3)	(4)	(5)

- A (1)
- B (2)
- C (3)



D (4)

E (5)

Answer: D

**Explanation:**

In the given problem figures, designs are getting changed according to different patterns. The changes in figure 5 to 6 will happen according to figure 1 to 2.

The pattern for figure 1 to 2: Lower-most letters are shifting to right and rightmost letter is coming to the leftmost position, star and square will exchange their positions, C and S will exchange their positions and the remaining 2 letters will also exchange their positions.

The same pattern will be followed for figure 5 to 6 and hence, answer will be D

## SBI Clerk Free Mock Test (Latest Pattern)

DA

**Instructions**

What approximate value will come in place of the question mark (?) in the following question?

**Question 151**

32.05% of 259.99 =?

A 92

B 88

C 78

D 90

E 83

Answer: E

**Explanation:**

As we need to find the approximate value only,

32.05% of 259.99 can be approximated to 32% of 260 =  $0.32 * 260 = 83.2$

Option (e) is the closest to this and hence is the answer

## SBI Clerk Previous Papers (Download PDF)

**Question 152**

$\frac{1}{8}$  of  $\frac{2}{3}$  of  $\frac{3}{5}$  of 1715 =?

A 80

B 85

C 90

D 95

E 75

Answer: B

**Explanation:**

We need to find the approximate value of  $\frac{1}{8}$  of  $\frac{2}{3}$  of  $\frac{3}{5}$  of 1715

$$\frac{1}{8} \text{ of } \frac{2}{3} \text{ of } \frac{3}{5} = \frac{1}{20}$$

Hence, the approximate value equals  $\frac{1}{20} \times 1715 = 85.75 \approx 85$

Hence, the correct answer is option (b)

**Question 153**

$$25.05 \times 123.95 + 388.999 \times 15.001 = ?$$

- A 900
- B 8950
- C 8935
- D 8975
- E 8995

**Answer: C**

**Explanation:**

As we are finding the approximate value of the given equation, let us slightly increase one of the terms and decrease the other time slightly.

$$\text{Hence, } 25.05 \times 123.95 + 388.999 \times 15.001 \approx 25 \times 124 + 389 \times 15$$

$$\text{This equals } 3100 + 5835 = 8935$$

So, the correct option is option (c)

**Question 154**

$$561 \div 35.05 \times 19.99 = ?$$

- A 320
- B 330
- C 315
- D 325
- E 335

**Answer: A**

**Explanation:**

$$561 \div 35.05 \times 19.99 \approx 560 \div 35 \times 20$$

$$\text{This equals } 16 \times 20 = 320$$

Hence, the correct option is option (a)

## Banking Daily Free Topic Test

**Question 155**

$$(15.01)^2 \times \sqrt{730} = ?$$

- A 6125

- B 6225
- C 6200
- D 6075
- E 6250

**Answer:** D

**Explanation:**

As we need to find the approximate value of the given equation, we can make some small approximations.

$$(15.01)^2 \times \sqrt{730} \approx 15^2 \times \sqrt{729}$$

This equals  $225 * 27 = 6075$

Hence, the correct option is option (d)

**Instructions**

In each of these questions a number series is given. In each series "only one" number is wrong. Find out the "wrong number"

**Question 156**

**3601, 3602, 1803, 604, 154, 36, 12**

- A 3602
- B 1803
- C 604
- D 154
- E 36

**Answer:** D

**Explanation:**

$$3602 = (3601/1)+1$$

$$1803 = (3602/2)+2$$

$$604 = (1803/3)+3$$

$$155 = (604/4)+4$$

$$36 = (155/5)+5$$

$$12 = (36/6)+6$$

154 is the wrong term in the series.

**Question 157**

**4, 12, 42, 196, 1005, 6066, 42511**

- A 12
- B 42
- C 1005
- D 196
- E 6066

**Answer:** B

**Explanation:**

$$T_n = T_{n-1} * n + n^2$$

$$12 = 4 * 2 + 2^2$$

$$45 = 12 * 3 + 3^2$$

$$196 = 45 * 4 + 4^2$$

and so on.

So 42 is the wrong term in the series.

**Question 158**

2, 8, 12, 20, 30, 42, 56

- A 8
- B 42
- C 30
- D 20
- E 12

**Answer: A**

**Explanation:**

Instead of 8, it should be 6. Then the difference the consecutive terms will be in AP.

$$6 - 2 = 4$$

$$12 - 6 = 6$$

$$20 - 12 = 8$$

$$30 - 20 = 10$$

$$42 - 30 = 12$$

$$56 - 42 = 14$$

**Question 159**

32, 16, 24, 65, 210, 945, 5197.5

- A 945
- B 16
- C 24
- D 210
- E 65

**Answer: E**

**Explanation:**

$$16 = 32 * 0.5$$

$$24 = 16 * 1.5$$

$$60 = 25 * 2.5$$

$$210 = 60 * 3.5$$

$$945 = 210 \times 4.5$$

$$5197.5 = 945 \times 5.5$$

65 is the wrong entry. It should be 60.

**Question 160**

**7, 13, 25, 49, 97, 194, 385**

- A 13
- B 49
- C 97
- D 194
- E 25

**Answer: D**

**Explanation:**

$$13 = 7 + 6$$

$$25 = 13 + 12$$

$$49 = 25 + 24$$

$$97 = 49 + 48$$

$$193 = 97 + 96$$

$$385 = 193 + 192$$

So 194 is an odd number out.

**Download Highly Rated Banking APP**

**Instructions**

For the following questions answer them individually

**Question 161**

Mr. X invested a certain amount in Debt and Equity funds in the ratio of 4 : 5 respectively. At the end of one year, he earned a total dividend of 30% on his investment. After one year he reinvested the amount including dividend in the ratio of 6 : 7 in Debt and Equity Funds. If the amount reinvested in Equity Funds was Rs. 94,500/-, what was the original amount invested in Equity Funds?

- A Rs. 75,000
- B Rs. 81,000
- C Rs. 60,000
- D Rs. 65,000
- E None of these

**Answer: A**

**Explanation:**

Since the amount reinvested is in the ratio 6:7,

the amount reinvested in equity is  $\frac{7}{6+7}$  of total amount.

$$\frac{7}{13} x = 94500$$

$$x = 94500 \times \frac{13}{7}$$

Since there was a 30% profit on this amount,

$$\text{Original amount} = (94500 \times 13) / (7 \times 1.3) = 135000$$

$$\text{Amount invested in equity} = \frac{5}{5+4} \times 135000 = 75000$$

**Question 162**

Father's age is 30 years more than the son's age. Ten years hence the father's age will become three times the son's age that time. What is son's present age?

- A 8
- B 7
- C 5
- D Cannot be determined
- E None of these

**Answer:** C

**Explanation:**

Let the son's present age be  $x$ .

$$\text{Father's age} = x + 30$$

$$\text{After 10 years, son's age} = x + 10 \text{ and father's age} = x + 40$$

$$\frac{x+40}{x+10} = 3$$

$$x + 40 = 3x + 30$$

$$x = 5$$

**Question 163**

If the length of the rectangular field is increased by 20% and the breadth is reduced by 20% the area of the rectangle will be  $192 \text{ m}^2$ . What is the area of the original rectangle?

- A  $184 \text{ m}^2$
- B  $196 \text{ m}^2$
- C  $204 \text{ m}^2$
- D  $225 \text{ m}^2$
- E None of these

**Answer:** E

**Explanation:**

Let the length and breadth be  $l$  and  $b$ .

New length and new breadth is  $1.2l$  and  $0.8b$ .

$$1.2 \times 0.8 lb = 192$$

$$lb = 200$$

$$\text{Original area} = 200$$

**Question 164**

Product of one-third of a number and 150% of another number is what percent of the product of original number?

- A 80
- B 50
- C 75
- D 120
- E None of these

**Answer: B**

**Explanation:**

Let the two numbers be x and y

$$\frac{x}{3} * 1.5y = 0.5xy$$

Original product = xy

0.5xy is 50% of xy.

**Question 165**

Inside a square plot a circular garden is developed which is exactly fits in the square plot and the diameter of the garden is equal to the side of the square plot which is 28 meters. What is the area of the space left out in the square plot after developing the garden?

- A  $98 m^2$
- B  $146 m^2$
- C  $84 m^2$
- D  $168 m^2$
- E None of these

**Answer: D**

**Explanation:**

Area of the square =  $28 * 28 = 784$

$$\text{Area of the circle} = \frac{\pi}{4} * 28 * 28 = 616$$

Area remaining =  $784 - 616 = 168$

**Question 166**

Amit and Sujit together can complete an assignment of data entry in 5 days. Sujit's speed is 80% of Amit's speed and the total key depressions in the assignment are 5,76,000. What Amit's speed in key depression per hour if they work for 8 hours a day?

- A 4800
- B 6400
- C 8000
- D 7200
- E None of these

**Answer: C**

**Explanation:**

Let Amit's speed of key depressions per hour be X.

So, Sumit's speed of key depressions is 80% of X.

In total, the number of key depressions per hour by both of them is 1.8 X

The total number of key depressions in a day by both of them together is  $1.8 \times 8 = 14.4 X$

This equals  $576000/5 = 115200$ .

So,  $14.4 * X = 115200$

Or,  $X = 115200/14.4 = 8000$

**Get Free Study Material & Updates - Whatsapp "Updates" to 7661025557**

**Question 167**

Out of 5 girls and 3 boys, a total of 4 children are to be randomly selected for a quiz contest. What is the probability that all the four children are girls?

A  $\frac{1}{14}$

B  $\frac{1}{7}$

C  $\frac{5}{17}$

D  $\frac{2}{17}$

E None of these

**Answer: A**

**Explanation:**

The total number of ways in which 4 children can be selected is  ${}^8C_4 = 70$

The number of favorable ways in which this can be done is  ${}^5C_4 = 5$

Hence, the required number of ways equals  $\frac{5}{70} = \frac{1}{14}$

**Question 168**

Profit earned by an organization is distributed among officers and clerks in the ration 5 : 3 respectively. If the number of officers is 45 and the number of clerks 80 and the amount received by each officer is Rs. 25,000/-, what was the total amount of profit earned?

A Rs. 22 lakhs

B Rs. 18.25 lakhs

C Rs. 18 lakhs

D Rs. 23.25 lakhs

E None of these

**Answer: C**

**Explanation:**

Let the amount recieved by each clerk be x

$$\frac{45 \times 25000}{80 \times x} = \frac{5}{3}$$

$$x = 8437.5$$

$$\text{Total profit} = (8437.5 \times 80) + (25000 \times 45) = 18 \text{ lakh}$$



**Question 169**

A shopkeeper labelled the price of his articles so as to earn a profit of 30% on the cost price. He then sold the articles by offering a discount of 10% on the labelled price. What is the actual percent profit earned in the deal?

- A 18%
- B 15%
- C 20%
- D Cannot be determined
- E None of these

**Answer:** E

**Explanation:**

Let the cost price of the article is 100

In order to earn 30% profit, the shopkeeper will sell it for 130

Discount = 10% of 130 = 13

SP = 130-13 = 117

Profit % =  $\frac{117-100}{100} * 100 = 17\%$

**SBI PO Free Mocks (Latest Pattern)**

**Question 170**

Mr. Shamin's salary increases every year by 10% in June. If there is no other increase or reduction in the salary and his salary in June 2011 was Rs. 22,385/-, what was his salary in June 2009?

- A Rs. 18,650
- B Rs. 18,000
- C Rs. 19,250
- D Rs. 18,500
- E None of these

**Answer:** D

**Explanation:**

Let the salary in 2009 be x

Salary in 2010 = 1.1x

Salary in 2011 = 1.1x\*1.1 = 1.21x

1.21x = 22385

x = 18500

**Instructions**

In each of these questions, one question is given followed by data in three statements I, II and III. You have to study the question and the data in statements and decide the question can be answered with data in which of the Statements and mark your answer accordingly.

Question 171

What is the rate of interest p.c.p.a.?

- Statements: I. Difference between the compound interest and simple interest earned two years on the amount invested is Rs. 100/-  
II. The amount becomes Rs. 19,500/- in the three years on simple interest.  
III. Simple interest accrued in two years on the same amount at the same rate of interest is Rs.3,000/-.

- A Only I and II  
B Only I and III  
C Only II and III  
D Only I and either II or III  
E None of these

Answer: B

Explanation:

Using statement 1, we get

$$P\left(1 + \frac{R}{100}\right)^2 - P - (P * R * 2)/100 = 100$$

$$\frac{PR^2}{10000} = 100$$

$$PR^2 = 1000000$$

Using statement 3, we get

$$P * R * 3 / 100 = 3000$$

$$PR = 100000$$

From these 2 statements we get R = 10%

Question 172

What is the speed of the train in kmph?

- Statement: I. The train crosses an 'x' metre long platform in 'n' seconds.  
II. Length of the train is 'y' metres.  
III. The train crosses a single pole in 'm' seconds.

- A Any two of the three  
B Only II and III  
C Only I and III  
D All I, II and III  
E Question Cannot be answered even with information in all three statements

Answer: A

Explanation:

Clearly, each statement alone is insufficient.

Let speed of the train = s kmph

I & II : Length of train = y, length of platform = x, time taken = n

$$\Rightarrow \frac{x+y}{s} = n$$

$$\Rightarrow s = \frac{n}{x+y} \text{ [ where, x,y,n are constants.]}$$

Thus, I & II are sufficient.

II & III : Length of train =  $y$ , time taken =  $m$

$$\Rightarrow s = y/m$$

Thus, II & III are sufficient.

I & III : Let length of train =  $L$

$$\Rightarrow \frac{L}{s} = m \text{ [From III]}$$

$$\& \frac{x+L}{s} = n \text{ [From I]}$$

Since, we have two variables 'L' & 's' and two equations. Therefore, we can find the speed of train.

Thus, I & III are sufficient.

**Thus, any two of the three statements are sufficient.**

## SBI Clerk Free Mock Test (Latest Pattern)

### Question 173

How many students passed in first class?

Statements: I. 85% of the students who appeared in examination have passed either in first class or in second class or in pass class.

II. 750 students have passed in second class.

III. Number of students passed in pass class is 28% of those passed in second class.

- A All I, II and III
- B Only I and III
- C Only II and III
- D Cannot be answered even with information in all three statements
- E None of these

**Answer: D**

#### Explanation:

Clearly, each statement alone is not sufficient.

And since we do not know the total no. of students in the class, we cannot determine the number of students passed in first class.

Thus, all statements combined together are not sufficient.

### Question 174

What is the amount invested in Scheme "B"?

Statements: I. The amount invested in Schemes 'A' and 'B' are in the ratio of 2 : 3 respectively.

II. Amount invested in Scheme 'A' is 40% of the total amount invested.

III. Amount invested in Scheme 'A' is Rs. 45,000/-.

- A Only I and II
- B Only I and III
- C Only II and III
- D All I, II and III
- E Only III and either I or II

**Answer: E**

**Explanation:**

Both the statements I and II mean the same thing. ie A has 40% of the investment and B has 60% of the investment.

Statement III gives the value of one investment.

So, we can consider one of the two statements. With the ratio of investments and the value of one investment, we can calculate the other.

So, investment in B =  $60 \times 45000 / 40 = 67,500$

**Question 175**

**What is the cost of flooring the rectangular hall?**

**Statement: I. Length of the rectangle is 6 metres.**

**II. Breadth of the rectangle is two-third of its length.**

**III. Cost of flooring the area of  $100 \text{ cm}^2$  is Rs. 45/-.**

- A Only I and III
- B Only II and III
- C All I, II and III
- D Question Cannot be answered with data in all three statements
- E None of these

**Answer: C**

**Explanation:**

Using statements 1 and 2, we get  $l = 6$  and  $b = 4$

Area =  $6 \times 4 = 24$

Using statement 3, cost of flooring  $100 \text{ m}^2 = 45$

Cost of flooring  $24 \text{ m}^2 = 45 \times 0.24 = 10.8$

## SBI Clerk Previous Papers (Download PDF)

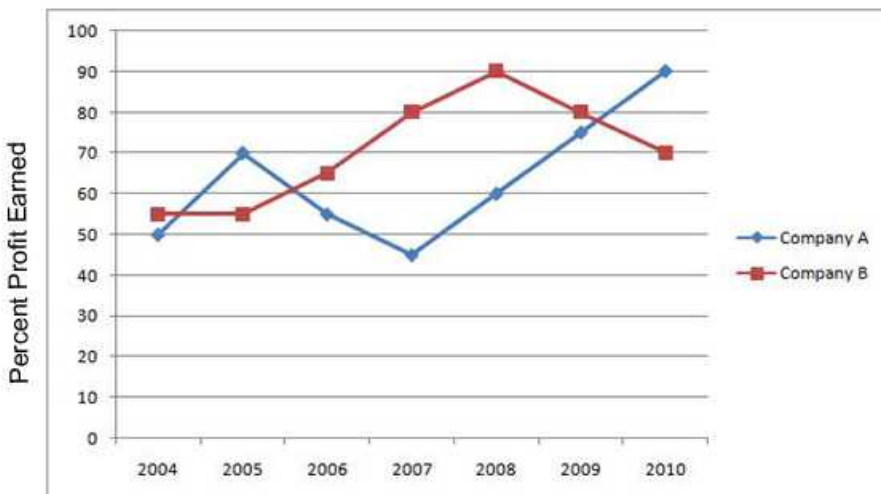
**Instructions**

Study the following graph carefully to answer the questions.

Percent Profit Earned by Two Companies Producing Electronic Goods over the Years

$$\text{percent profit} = \frac{\text{Profit Earned}}{\text{Total Investment}} \times 100$$

Profit Earned = Total Income - Total Investment in the year



**Question 176**

If the profit earned in 2006 by Company B was Rs. 8,12,500/-. what was the total income of the Company in that year?

- A Rs.12,50,000/-
- B Rs. 20,62,500/-
- C Rs.16,50,000/-
- D Rs.18,25,000/-
- E None of these

**Answer: B**

**Explanation:**

Investment by B in 2006 =  $100 \times \text{Profit earned} / \text{percent profit} = 100 \times 8,12,500 / 65 = 12.5 \text{ lakhs}$

Total income = Profit + investment = 20.625 lakhs

**Question 177**

If the amount invested by the two Companies in 2005 was equal, what was the ratio between total income in 2005 of the Companies A and B respectively?

- A 31 : 33
- B 33 : 31
- C 34 : 31
- D 14 : 11
- E None of these

**Answer: C**

**Explanation:**

Let the investment of each company be I.

Income of A = Profit earned + I

$$= I \times \text{percent profit} / 100 + I = .7I + I = 1.7I$$

Income of B = Profit earned + I

$$= I \times \text{percent profit} / 100 + I = .55I + I = 1.55I$$

$$\text{Ratio} = 1.7 : 1.55 = 34 : 31$$

**Question 178**

If the total amount invested by the two Companies in 2009 was Rs. 27 lakhs, while the amount invested by Company B was 50% of the amount invested by Company A, what was the total profit earned by the two Companies together?

- A Rs. 21.15 lakhs
- B Rs. 20.7 lakhs
- C Rs. 18.70 lakhs
- D Rs. 20.15 lakhs
- E None of these

**Answer: B**

**Explanation:**

$$\text{Percent profit} = \frac{\text{Profit Earned}}{\text{Total Investment}} \times 100$$

Total investment = 27 lakhs

Let B's investment be x

A's investment = 2x

So,  $3x = 27$  or  $x = 9$  lakhs

For B,

$$80 = 100 * y/9$$

So,  $y = 7.2$  lakhs

For A,

$$75 = 100 * z/ 18$$

$z = 13.5$  lakhs.

So, total = 20.7 lakhs

## Banking Daily Free Topic Test

**Question 179**

If the incomes of Company A in 2007 and 2008 were equal and the amount invested in 2007 was Rs. 12 lakhs, what was the amount invested in 2008?

- A Rs. 10,87,500/-
- B Rs. 10,85,700/-
- C Rs. 12,45,000/-
- D Rs. 12,85,000/-
- E None of these

**Answer:** A

**Explanation:**

Income = Profit earned + Investment

Since income in 2007 = income in 2008,

$$\text{Profit (2007) + Investment (2007) = Profit (2008) + Investment(2008)}$$

$$\text{Profit} = \text{Investment} * \text{Percent profit}/100$$

$$\text{So, } 12 \text{ lakhs } (.45) + 12 \text{ lakhs} = \text{Investment(2008)} * .6 + \text{Investment(2008)}$$

$$\text{So, Investment(2008)} = 10.875 \text{ lakhs}$$

**Question 180**

If the amount of profit earned by Company A in 2006 was Rs.10.15 lakhs, what was the total investment?

- A Rs. 13.8 lakhs
- B Rs. 14.9 lakhs
- C Rs. 15.4 lakhs
- D Rs. 14.2 lakhs

E None of these

**Answer: E**

**Explanation:**

$$\text{Percent profit} = \frac{\text{Profit Earned}}{\text{Total Investment}} \times 100$$

$$55 = \frac{10.15}{\text{Total Investment}} \times 100$$

$$\text{So, investment} = 10.15 / .55 = 18.45$$

**Question 181**

If the amount invested by the Company B in 2004 is Rs. 12 lakhs and the income of 2004 is equal to the investment in 2005, what was the amount of profit earned in 2005 by Company B?

A Rs. 6.6 lakhs

B Rs. 18.6 lakhs

C Rs. 10.23 lakhs

D Rs. 9.6 lakhs

E None of these

**Answer: C**

**Explanation:**

$$\text{Percent profit} = \frac{\text{Profit Earned}}{\text{Total Investment}} \times 100$$

Investment in 2004 = 12 lakhs.

Percent profit for B = 55%

$$\text{So, profit earned} = .55 * 12 = 6.6 \text{ lakhs}$$

Profit Earned = Total Income - Total Investment in the year

$$\text{Total income for 2004} = 6.6 + 12 = 18.6 \text{ lakhs}$$

$$\text{Investment in 2005} = 18.6 \text{ lakhs}$$

Percent Profit = 55%

$$\text{Profit earned} = .55 * 18.6 = 10.23 \text{ lakhs}$$

**Question 182**

If the investments of the Company A in 2007 and 2008 were equal, what is the difference between profit earned in two years if the income in 2008 was Rs.24 lakhs?

A Rs. 2.25 lakhs

B Rs. 3.6 lakhs

C Rs. 1.8 lakhs

D Rs. 2.6 lakhs

E None of these

**Answer: A**

**Explanation:**

Let the investment of company A in 07 and 08 be 100 x.

then, profit in 07 = 45 x

profit in 08 = 60 x

Income in 08 = 24 lacs = 60 x + 100 x (Since, income = profit + investment)

=> x = 15,000

Difference in profit = 60 x - 45 x = 15 x = 15 \* 15,000 = 2.25 lakhs

### Question 183

If each of the Companies A and B invested Rs. 25 lakhs in 2010, what was the average profit earned by the two Companies?

- A Rs. 18 lakhs
- B Rs. 22.5 lakhs
- C Rs. 17.5 lakhs
- D Rs. 20 lakhs
- E None of these

**Answer:** D

### Explanation:

Investment = 25 lakhs.

We use the formula  $\text{Percent profit} = \frac{\text{Profit Earned}}{\text{Total Investment}} \times 100$

So, for A, the profit earned =  $90 * 25/100 = 22,50,000$

For B, the profit earned =  $70 * 25/100 = 17,50,000$

So, the average = 20 lakhs.

### Instructions

Study the following table carefully and answer the questions which follow-

**Number of candidates found Eligible and the number of candidates Short-listed for interviews for a recent Recruitment process for Six posts from Different States.**

Post/ State	I		II		III		IV		V		VI	
	E	S	E	S	E	S	E	S	E	S	E	S
A	2500	65	7200	240	5200	76	3600	200	4600	110	5400	380
B	3200	220	8500	420	8400	190	6200	320	5800	180	6200	430
C	2800	280	4500	350	7600	160	8200	440	7300	310	3700	250
D	2400	85	4800	200	2600	55	7500	350	3900	160	4800	360
E	3000	120	5600	280	3800	75	6800	280	6100	260	7800	520
F	4800	325	6400	320	4400	220	4700	180	4900	220	8800	640
G	6500	550	7000	140	6000	325	5500	220	8100	410	2700	200

**E-Eligible S-Short-Listed**

### Question 184

From State 'B' which post had the "highest" percentage of candidates short-listed?

- A V
- B IV
- C VI
- D II



E None of these

**Answer: C**

**Explanation:**

Percentage of candidates shortlisted =  $100 * \text{Number of candidates shortlisted} / \text{Number of candidates eligible}$ .

We can calculate this for each of the posts and the highest is for post VI, which is equal to  $100 * 430/6200 = 6.94\%$

**Download Highly Rated Banking APP**

**Question 185**

"Approximately" what is the average number of candidates found eligible from all States for Post III?

A 6700

B 6200

C 4200

D 4500

E 5500

**Answer: E**

**Explanation:**

The average number of eligible candidates =  $\text{sum of the candidates} / \text{number of states}$

=  $(5200+8400+7600+2600+3800+4400+6000)/7 = 5428.57$

**Question 186**

What is the overall percentage (rounded off to one digit after decimal) of candidates short-listed over the total number of candidates eligible from all the States together for Post I?

A 9.5%

B 12.5%

C 7.2%

D 6.5%

E None of these

**Answer: D**

**Explanation:**

The total number of candidates short listed =  $(65 + 220 + 280 + 85 + 120 + 325 + 550) = 1645$

The total number of candidates eligible for the post =  $2500 + 3200 + 2800 + 2400 + 3000 + 4800 + 6500 = 25200$

The required percentage =  $100 * 1645 / 25200 = 6.53\%$

**Question 187**

What is the ratio between total number of candidates short-listed for all the posts together from States E and G respectively?

A 307 : 369

B 73 : 79

C 6 : 5

D 9 : 7

E None of these

**Answer: A**

**Explanation:**

Total number of candidates shortlisted from E =  $120 + 280 + 75 + 280 + 260 + 520 = 1535$

Total number of candidates shortlisted from G =  $550 + 140 + 325 + 220 + 410 + 200 = 1845$

So, the ratio =  $1535:1845 = 307:369$

## SBI PO Solved Previous Papers (Download PDF)

**Question 188**

Total number of candidates found eligible from all States together for Post I is "approximately" what percent of the total number of candidates found eligible from all States together for Post VI?

A 45

B 50

C 60

D 55

E 65

**Answer: E**

**Explanation:**

Total number of candidates eligible for post I =  $2500 + 3200 + 2800 + 2400 + 3000 + 4800 + 6500 = 25200$

Total number of candidates eligible for post VI =  $5400 + 6200 + 3700 + 4800 + 7800 + 8800 + 2700 = 39400$

So, the required percentage =  $100 * 25200/39400 = 63.96\%$

**Question 189**

Which State had the "lowest" percentage of candidates short-listed over eligible for Post IV?

A G

B F

C E

D C

E None of these

**Answer: B**

**Explanation:**

Percentage of candidates shortlisted over eligible =  $100 * \text{Number of shortlisted candidates} / \text{Number of eligible candidates}$

We calculate this for all the states and can find that this is the lowest for F. The value for F is  $100 * 180/4700 = 38.3\%$

**Question 190**

What is the ratio between total number of candidates short-listed from all States together for Posts V and VI respectively?

A 6 : 7

- B 55 : 96  
 C 165 : 278  
 D 16 : 25  
 E None of these

**Answer: C**

**Explanation:**

Total number of candidates shortlisted for V =  $110 + 180 + 310 + 160 + 260 + 220 + 410 = 1650$

Total number of candidates shortlisted for VI =  $380 + 430 + 250 + 360 + 520 + 640 + 200 = 2780$

The required ratio =  $165 : 278$

**Get Free Study Material & Updates - Whatsapp "Updates" to 7661025557**

**Instructions**

These questions are based on the following data. Study it carefully and answer the question that follow-

In a school having 400 students boys and girls are in the ratio of 3 : 5 respectively. The students speak Hindi, English or both the languages. 12% of the boys speak only Hindi, 22% of the girls speak only English. 24% of the total students speak only Hindi and the number of boys speaking both the languages is six times the number of boys speaking only Hindi.

**Question 191**

**Total how many boys speak Hindi?**

- A 18  
 B 126  
 C 108  
 D 26  
 E None of these

**Answer: B**

**Explanation:**

The ratio of boys to girls is 3:5

There are 400 candidates in total.

So, the number of boys =  $\frac{3}{8} * 400 = 150$

Number of girls =  $\frac{5}{8} * 400 = 250$

Number of the boys speaking only Hindi =  $12\% * 150 = 18$

Number of girls speaking only English =  $22\% * 250 = 55$

Number of total students speaking only Hindi =  $24\% * 400 = 96$

So, number of girls speaking only Hindi =  $96 - 18 = 78$

Number of boys speaking both languages =  $6 * 18 = 108$

But the total number of boys = boys speaking only Hindi + Boys speaking both languages + boys speaking only English

So,  $150 = 18 + 108 + x$

So, boys speaking only English = 24

Number of boys speaking Hindi = only Hindi + both languages =  $18 + 108 = 126$

**Question 192**

**How many girls speak only Hindi?**

- A 55
- B 117
- C 96
- D 78
- E None of these

**Answer: D**

**Explanation:**

The ratio of boys to girls is 3:5

There are 400 candidates in total.

$$\text{So, the number of boys} = \frac{3}{8} * 400 = 150$$

$$\text{Number of girls} = \frac{5}{8} * 400 = 250$$

$$\text{Number of the boys speaking only Hindi} = 12\% * 150 = 18$$

$$\text{Number of girls speaking only English} = 22\% * 250 = 55$$

$$\text{Number of total students speaking only Hindi} = 24\% * 400 = 96$$

$$\text{So, number of girls speaking only Hindi} = 96 - 18 = 78$$

**Question 193**

**Total how many students speak English?**

- A 304
- B 79
- C 225
- D 117
- E None of these

**Answer: A**

**Explanation:**

The ratio of boys to girls is 3:5

There are 400 candidates in total.

$$\text{So, the number of boys} = \frac{3}{8} * 400 = 150$$

$$\text{Number of girls} = \frac{5}{8} * 400 = 250$$

$$\text{Number of the boys speaking only Hindi} = 12\% * 150 = 18$$

$$\text{Number of girls speaking only English} = 22\% * 250 = 55$$

$$\text{Number of total students speaking only Hindi} = 24\% * 400 = 96$$

$$\text{So, number of girls speaking only Hindi} = 96 - 18 = 78$$

$$\text{Number of boys speaking both languages} = 6 * 18 = 108$$

But the total number of boys = boys speaking only Hindi + Boys speaking both languages + boys speaking only English

$$\text{So, } 150 = 18 + 108 + x$$

So, boys speaking only English = 24

the total number of girls = girls speaking only Hindi + girls speaking both languages + girls speaking only English

$$250 = 78 + x + 55$$

So, girls speaking both languages = 117

Total English speakers = Girls speaking only English + Girls speaking both + Boys speaking only English + Boys speaking both = 55 + 117 + 108 + 24 = 304

## SBI PO Free Mocks (Latest Pattern)

### Question 194

Number of girls speaking only Hindi is what percent of the total number of students speaking only Hindi?

- A 38.2
- B 71.8
- C 31.2
- D 78
- E None of these

Answer: E

### Explanation:

The ratio of boys to girls is 3:5

There are 400 candidates in total.

$$\text{So, the number of boys} = \frac{3}{8} * 400 = 150$$

$$\text{Number of girls} = \frac{5}{8} * 400 = 250$$

$$\text{Number of the boys speaking only Hindi} = 12\% * 150 = 18$$

$$\text{Number of girls speaking only English} = 22\% * 250 = 55$$

$$\text{Number of total students speaking only Hindi} = 24\% * 400 = 96$$

$$\text{So, number of girls speaking only Hindi} = 96 - 18 = 78$$

$$\text{Number of boys speaking both languages} = 6 * 18 = 108$$

But the total number of boys = boys speaking only Hindi + Boys speaking both languages + boys speaking only English

$$\text{So, } 150 = 18 + 108 + x$$

So, boys speaking only English = 24

the total number of girls = girls speaking only Hindi + girls speaking both languages + girls speaking only English

$$250 = 78 + x + 55$$

So, girls speaking both languages = 117

$$\text{The required percentage} = 100 * \frac{78}{96} = 81.25$$

### Question 195

What is the respective ratio between the number of boys and girls speaking both the languages?

- A 23 : 25
- B 12 : 25
- C 12 : 13

D 25 : 13

E None of these

**Answer: C**

**Explanation:**

The ratio of boys to girls is 3:5

There are 400 candidates in total.

$$\text{So, the number of boys} = \frac{3}{8} * 400 = 150$$

$$\text{Number of girls} = \frac{5}{8} * 400 = 250$$

$$\text{Number of the boys speaking only Hindi} = 12\% * 150 = 18$$

$$\text{Number of girls speaking only English} = 22\% * 250 = 55$$

$$\text{Number of total students speaking only Hindi} = 24\% * 400 = 96$$

$$\text{So, number of girls speaking only Hindi} = 96 - 18 = 78$$

$$\text{Number of boys speaking both languages} = 6 * 18 = 108$$

But the total number of boys = boys speaking only Hindi + Boys speaking both languages + boys speaking only English

$$\text{So, } 150 = 18 + 108 + x$$

$$\text{So, boys speaking only English} = 24$$

the total number of girls = girls speaking only Hindi + girls speaking both languages + girls speaking only English

$$250 = 78 + x + 55$$

$$\text{So, girls speaking both languages} = 117$$

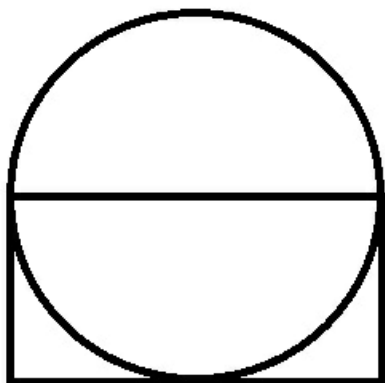
$$\text{Number of boys speaking both languages : Number of girls speaking both languages} = 108 : 117 = 12:13$$

**Instructions**

For the following questions answer them individually

**Question 196**

**Area of the circle is  $616 \text{ cm}^2$ . What is the area of the rectangle? (One side of the rectangle passes through the centre of the circle)**



A  $786 \text{ cm}^2$

B  $196 \text{ cm}^2$

C  $392 \text{ cm}^2$

D Cannot be determined

E None of these

**Answer:** C

**Explanation:**

Area of the circle =  $\pi d^2/4 = 616$

$d = 28$

The length of the rectangle is equal to diameter which is 28 and breadth is equal to radius which is 14

Area =  $28 \times 14 = 392$

## SBI Clerk Free Mock Test (Latest Pattern)

### Instructions

Study the information given in each of these questions and then answer the question.

### Question 197

Population in millions

City	Total Population	Male Population
A	12	6.5
B	15	7.2
C	17	9.0
D	19	9.9
E	22	10.8

What is the average female population in million?

A 8.32

B 8.86

C 8.68

D 9.12

E None of these

**Answer:** A

**Explanation:**

Female population in city A =  $12 - 6.5 = 5.5$  millions

Female population in city B =  $15 - 7.2 = 7.8$  millions

Female population in city C =  $17 - 9 = 8$  millions

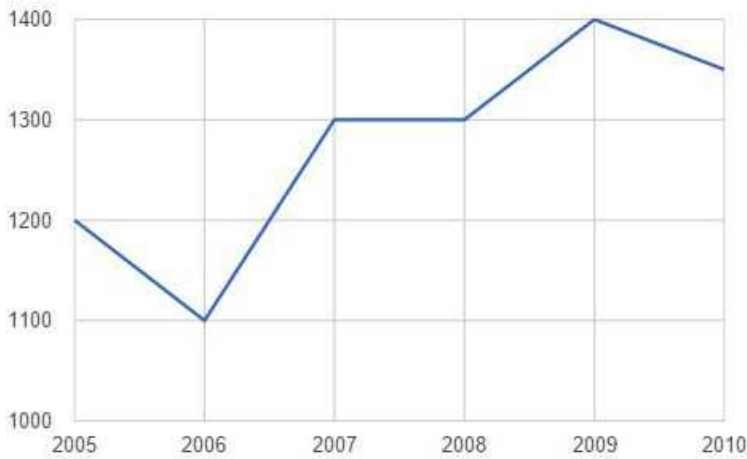
Female population in city D =  $19 - 9.9 = 9.1$  millions

Female population in city E =  $22 - 10.8 = 11.2$  millions

Average =  $\text{sum}/5 = (5.5 + 7.8 + 8 + 9.1 + 11.2)/5 = 8.32$  millions

Question 198

What is the percentage rise in production in 2007 from 2006? (Rounded off to two digits after decimal)



- A 28.18
- B 18.18
- C 16.28
- D 26.18
- E None of these

Answer: B

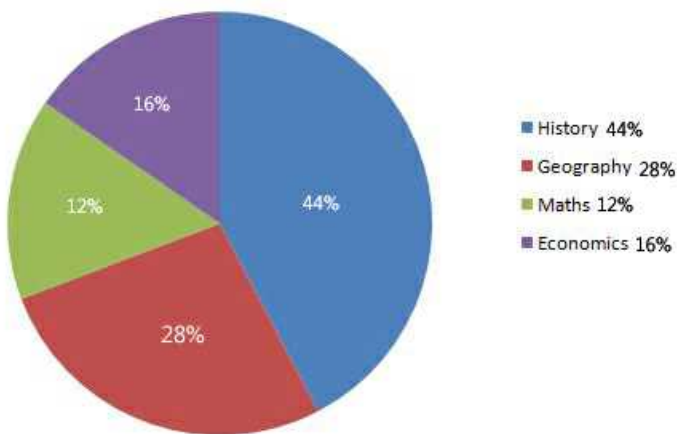
Explanation:

The value increased from 1100 to 1300. So, percentage increase is equal to  $100 * (\text{Final value} - \text{Original Value}) / \text{Original value} = 100 * (1300 - 1100) / 1100 = 18.18\%$

Question 199

Out of the total 550 students, how many students did not prefer Maths or Economics?

Break-up of students having preference for each subject.



- A 462



- B 154
- C 196
- D 396
- E None of these

**Answer:** D

**Explanation:**

12% like Maths and 16% like Economics. So, 28% students like Maths or Economics. The rest of them (72%) don't.

So, the answer is  $72\% * 550 = 396$

## SBI Clerk Previous Papers (Download PDF)

### Question 200

What is the difference (in Rs. lakhs) between the average salary and the lowest salary?

Person	Salary in Rs. Lakhs
A	8.5
B	7.6
C	12.8
D	5.4
E	10.5

- A 4.2
- B 2.65
- C 3.65
- D 4.06
- E None of these

**Answer:** E

**Explanation:**

The average salary = Sum of the values/ Number of values =  $(8.5 + 7.6 + 12.8 + 5.4 + 10.5)/5 = 8.96$

The lowest salary = 5.4

So, the difference =  $8.96 - 5.4 = 3.56$  Lakh Rupees.

**Banking Daily Free Topic Test**

**Download Highly Rated Banking APP**

**SBI PO Solved Previous Papers (Download PDF)**

**Get Free Study Material & Updates - Whatsapp "Updates" to 7661025557**

**SBI PO Free Mocks (Latest Pattern)**

**SBI Clerk Free Mock Test (Latest Pattern)**

**SBI Clerk Previous Papers (Download PDF)**

**Banking Daily Free Topic Test**