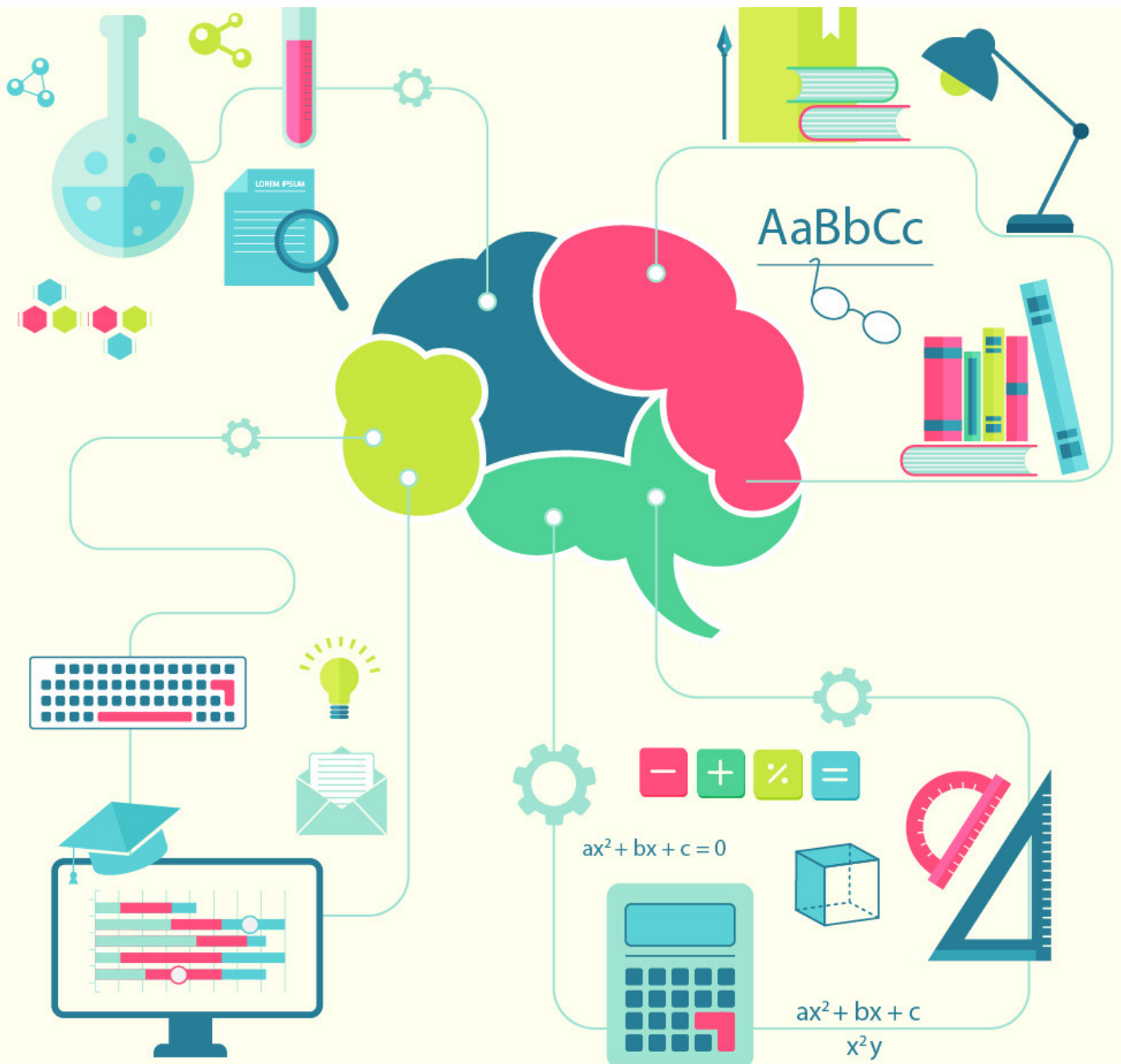


cracku 

Average Problems For IBPS Clerk

13 Nov 2017





Question 1:

The average of five numbers is 34.4. The average of the first and the second number is 46.5. The average of the fourth and the fifth number is 18. What is the third number ?

- a) 45
- b) 46
- c) 42
- d) 49
- e) None of these

Para Jumbles For IBPS CLERK PDF

Question 2:

The average of five numbers is 56.4. The average of the first and the second number is 53. The average of the fourth and the fifth number is 56. What is the third number ?

- a) 63
- b) 62
- c) 67
- d) 68
- e) None of these.

IBPS Clerk 2016 Prelims Question Paper
[Download PDF]



SOLVE PAST IBPS CLERK PAPERS

Question 3:

The average score of a cricketer for 13 matches is 42 runs. If his average score for the, first 5 matches is 54 runs, then what was his average score for the last 8 matches ?

- a) 37
- b) 39
- c) 34.5
- d) 33.5
- e) 37.5

Question 4:

The ratio between the ages of a father and his son four years ago was 19:6. If the difference between the ages of the father and son is 26 years. What will be the ratio of their present ages ?

- a) 21:8
- b) 23:8
- c) 23:10
- d) 27:14
- e) None of these

[Click here](#)

IBPS Clerk English Study Material

DOWNLOAD APP

FOR 100 FREE BANKING TESTS





Question 5:

65% of a number is more than its 36% by 58. What is 23% of that number ?

- a) 66
- b) 69
- c) 48
- d) 46
- e) None of these

IBPS Clerk Computer Awareness PDF

Question 6:

Gaurav spends 40% of the amount he received from his father on hostel expenses, 20% on books and stationery and 50% of the remaining on transport. He saves Rs 450 which is half the remaining amount spending on hostel expenses, books etc. and transport. How much money did he get from his father ?

- a) Rs 3,000
- b) Rs 6,000
- c) Rs 4,500
- d) Can't be determined
- e) None of these



SOLVE PAST IBPS CLERK PAPERS

Solutions: (1 to 6)

1) Answer (e)

Average = total sum of elements / number of elements

Average of 5 numbers = 34.4

total of 5 numbers = $34.4 \times 5 = 172$

Similarly total sum of 1st and 2nd number = $46.5 \times 2 = 93$

Similarly total sum of 4th and 5th number = $18 \times 2 = 36$

3rd Number = $172 - (93+36) = 43$

hence, E option is correct

2) Answer (e)

Average of 5 numbers is given as 56.4

Total of 5 numbers = Average x Number of Elements

Total of 5 numbers = $56.4 \times 5 = 282$

Average of 1st and 2nd number is 53

Total of 1st and 2nd number = $53 \times 2 = 106$

Average of 4th and 5th number is 56

total of 4th and 5th number = $56 \times 2 = 112$

$1st + 2nd + 3rd + 4th + 5th = 282$

$106 + 3rd + 112 = 282$

$3rd = 64$

hence option E is correct

IBPS Clerk Expected Cutoff 2017 State Wise

3) Answer (a)

Let the ages of the father and son be F and F-26.

Their ages four years ago are F-4 and F-30.

The ratio of these ages is 19:6

Therefore, $(F-4)/(F-30) = 19/6$

Or, $6F - 24 = 19F - 570$

So, $13F = 546$

Or, $F = 42$ and the age of the son is $42-26 = 16$

Hence, the required ratio is $42:16 = 21:8$

DOWNLOAD APP
FOR 100 FREE BANKING TESTS





4) Answer (d)

Let the number be X

So, $0.65X - 0.36X = 58$

Or, $0.29X = 58$ and $X = 200$

Hence, 23% of X equals $0.23 \times 200 = 46$

Blood Relation Questions for IBPS Clerk PDF

5) Answer (c)

Let the money Gaurav inherited be equal to X

So, his hostel expenses equal $0.4X$

Expenses on books and stationery is $0.2X$

Remaining amount is $X - 0.4X - 0.2X = 0.4X$

Transport expenses is 50% of $0.4X = 0.2X$

Remaining amount is $0.4X - 0.2X = 0.2X$

He saves 50% of it, that is $0.1X$ and it equals 450.

So, the value of X is $450/0.1 = 4500$

6) Answer(c)

Let the money Gaurav inherited be equal to X

So, his hostel expenses equal $0.4X$

Expenses on books and stationery is $0.2X$

Remaining amount is $X - 0.4X - 0.2X = 0.4X$

Transport expenses is 50% of $0.4X = 0.2X$

Remaining amount is $0.4X - 0.2X = 0.2X$

He saves 50% of it, that is $0.1X$ and it equals 450.

So, the value of X is $450/0.1 = 4500$



SOLVE PAST IBPS CLERK PAPERS

Instructions:

A city X has six villages around it. The population of village A is 25% of the population of city X while that of village B is 20% of that of city X. The population of village C is $\frac{2}{5}$ th of that of city X. The population of village D is 60% of that of village 'C'. The population of village E is 85% of that of village B. The population of village F is 21000 which is 35% of that of city X.

Question 7:

What is the population of city X?

- a) 60000
- b) 80000
- c) 65000
- d) 64000
- e) None of these

Free GK Tests for IBPS Clerk

Question 8:

The respective ratio of between the population of village A and village D is

- a) 24 : 23
- b) 25 : 24
- c) 25 : 23
- d) 11 : 12
- e) None of these

DOWNLOAD OUR TOP RATED APP





Question 9:

The difference between the population of village C and village D is

- a) 9000
- b) 9500
- c) 9600
- d) 8800
- e) None of these

[Download PDF of
Number Series Questions](#)

Question 10:

By what per cent is the population of village E less than that of village A ?

- a) 40%
- b) 35%
- c) 30%
- d) 32%
- e) None of these



SOLVE PAST IBPS CLERK PAPERS

Solutions (7 to 10)

7) Answer (a)

Population of city F = 21000

$$\text{Population of city X} = 21000 \times \frac{100}{35} = 60000$$

8) Answer (b)

Let the populations of villages X,A,B,C,D,E,F be x,a,b,c,d,e,f respectively

Given that

$$a = 0.25x$$

$$b=0.2x$$

$$c=0.4x$$

$$d=0.6 \times 0.4x=0.24x$$

$$e=0.85 \times 0.2x=0.17x$$

$$f=0.35x=21000$$

$$\text{Hece } x = 60000$$

The respecive ratio of between the population of village A and village D = a:d = 0.25x:0.24x = 25:24

9) Answer (c)

Let the populations of villages X,A,B,C,D,E,F be x,a,b,c,d,e,f respectively

Given that

$$a = 0.25x$$

$$b=0.2x$$

$$c=0.4x$$

$$d=0.6 \times 0.4x=0.24x$$

$$e=0.85 \times 0.2x=0.17x$$

$$f=0.35x=21000$$

$$\text{Hece } x = 60000$$

The difference between the population of village C and village D = c-d
=0.4x-0.24x =0.16x=0.16 x 60000 = 9600

Download PDF of
Profit and Loss Questions



10) Answer (d)

Let the populations of villages X,A,B,C,D,E,F be x,a,b,c,d,e,f respectively

Given that

$$a = 0.25x$$

$$b=0.2x$$

$$c=0.4x$$

$$d=0.6*0.4x=0.24x$$

$$e=0.85*0.2x=0.17x$$

$$f=0.35x=21000$$

$$\text{Hence } x = 60000$$

per cent by which the population of village E is less than that of village A

$$= (0.25x - 0.17x)/0.25x \times 100 = 0.08/0.25 \times 100 = 32$$

Free Computer Awareness Tests
for IBPS Clerk Download The App

IBPS Clerk Solved Previous
Question Papers

Whatsapp 'Banking' to join in Banking
Group to this number (7661025557)