



**RRB NTPC 12 April 2016 Shift 3**

All rights reserved. No part of this publication may be reproduced, distributed, or transmitted in any form or by any means, electronic, mechanical, photocopying, recording or otherwise, or stored in any retrieval system of any nature without the permission of cracku.in, application for which shall be made to [support@cracku.in](mailto:support@cracku.in)

## RRB NTPC 12 April 2016 - Shift 3

### Instructions

For the following questions answer them individually

### Question 1

Ritesh sold a pen for Rs. 36 with a profit of 20%. If it were sold for Rs. 33. then what could be the percentage of profit or loss?

- A 10% Profit
- B 15% Profit
- C 12% Loss
- D 18% Loss

**Answer: A**

### Explanation:

As per the given data,

Let the cost price of the pen be Rs.x

$$\Rightarrow \text{Profit \%} = \frac{(SP-CP)}{CP} \times 100$$

$$\Rightarrow 20 = \frac{(36-x)}{x} \times 100$$

$$\Rightarrow 20x = 3600 - 100x$$

$$\Rightarrow 120x = 3600$$

$$\Rightarrow x = 30$$

$\therefore$  Cost price of the pen is Rs.30

Also given that he sold the pen at Rs.33

By comparing with cost price of the pen Rs.30 with selling price of the pen Rs.33, we can say it as profit

$$\Rightarrow \text{Profit \%} = \frac{(33-30)}{30} \times 100 = 10 \%$$

$\therefore$  Percentage of profit is 10%

## RRB NTPC Previous Papers (Download PDF)

### Question 2

Which sport has the highest rank of Yokozuna?

- A Sumo wrestling
- B Judo
- C Jujitsu
- D Kendo

**Answer: A**

### Question 3

Rearrange the jumbled up letters in their natural sequence and find the odd one out.

- A SAMR
- B MOETC

- C USVNE
- D PUJIERT

**Answer:** B

**Explanation:**

SAMR = MARS

USVNE = VENUS

PUJIERT = JUPITER

all these are planets not the below one

MOETC = COMET

**Question 4**

**What does UFO stand for?**

- A Under Fire Object
- B Unidentified Flying Object
- C Unapproved Foreign Object
- D Unidentified Free Object

**Answer:** B

## RRB NTPC Free Mock Tests

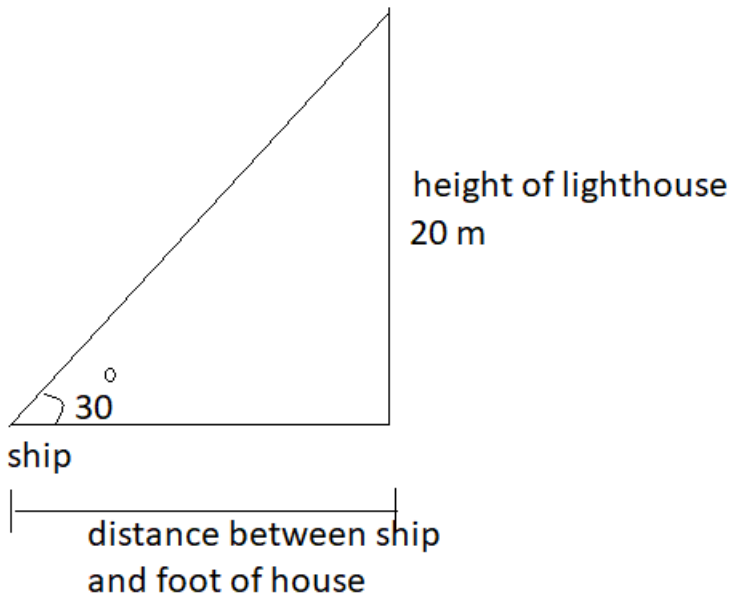
**Question 5**

The height of a light house is 20 meters above sea level. The angle of depression (from the top of the lighthouse) of a ship in the sea is  $30^\circ$ . What is the distance of the ship from the foot of the light house?

- A 16 m
- B  $20\sqrt{3}$
- C 20 m
- D 30 m

**Answer:** B

**Explanation:**



angle of depression =  $30^\circ$  = angle of elevation from the boat

height of light house = 20m

let the distance btw the light house and boat be x

$$\tan \Phi = \frac{\text{opp}}{\text{adj}}$$

$\tan 30^\circ = 20 \div \text{distance btw the light house and boat}$

$$\frac{1}{\sqrt{3}} = 20 \div x$$

$$x = 20\sqrt{3}$$

#### Question 6

Which queen of Ahmednagar opposed emperor Akbar?

- A Rani Durgavati
- B Zeenat Mahal
- C Chand Bibi
- D Razia Sultan

Answer: C

#### Question 7

When is International day for Preservation of Ozone layer observed?

- A September 16
- B July 4
- C January 23
- D May 1

Answer: A

## RRB JE Previous Papers ( Download Pdf)

### Question 8

Who invented the bifocal glasses?

- A Thomas Alva Edison
- B Benjamin francllin
- C Evangelista
- D Isaac Newton

Answer: B

### Question 9

Identify the odd one from the list below.

- A Snake
- B Lizard
- C Reptiles
- D Crocodile

Answer: C

### Explanation:

Snake , Crocodile, Lizard are the groups of Reptiles

### Question 10

What denotes learned and shared beliefs and behaviours?

- A Culture
- B Ethnicity
- C Group
- D Descent

Answer: A

### Explanation:

background of a person in terms of family or nationality = Descent

the fact or state of belonging to a social group that has a common national or cultural tradition = Ethnicity

the attitudes and behaviour characteristic of a particular social group = Culture

## RRB JE Free Mock Test

### Question 11

Who invented the mobile phone?

- A Joseph Wilson
- B Edwin Land
- C Martin Cooper
- D John Lloyd Wright

**Answer: C**

**Question 12**

What of the following refers to hypotheses which are confirmed by varied tests?

- A Assumption
- B Theory
- C Answer
- D Opinion

**Answer: B**

**Question 13**

What does PDA stand for?

- A Personal Data Assistant
- B Personal Digital Assistant
- C Prime Data Assistant
- D Prime Digital Assistant

**Answer: B**

**Daily Free RRB Online Test**

**Question 14**

If the angles of a triangle are in the ratio of 1:4:7, then find the ratio of the greatest angle to the smallest angle.

- A 7:2
- B 2:3
- C 7:1
- D 3:5

**Answer: C**

**Explanation:**

The sum of angles of triangle is 180

let the angles  $1x, 4x, 7x$

$$1x + 4x + 7x = 180$$

$$12x = 180$$

$$x = \frac{180}{12}$$

$$= 15$$

first angle=15°  
second angle=60°  
third angle=105°  
the ratio of the greatest angle to the smallest angle

7:1

**Question 15**

**Name the architect who designed New Delhi.**

- A Le Corbusier
- B Sir Edwin Lutyens
- C Andrew Paul
- D George Baker

**Answer: B**

**Question 16**

**The mean of 10 observations is 17. One more observation is included and the new mean becomes 16. The 11<sup>th</sup> observation is**

- A 16
- B 8
- C 6
- D 12

**Answer: C**

**Explanation:**

$$17 \times 10 = 170$$

$$11 \times 16 = 176$$

$$176 - 170 = 6$$

the 11th observation is 6

**RRB Group-D Previous Papers**

**Question 17**

**Battle of Plassey was fought by the British under the leadership of**

- A Robert Clive
- B Lord Dalhousie
- C Warren Hastings
- D James Hearty

**Answer: A**

**Question 18**

**Arun and Amit can do a piece of work in 9 days and 12 days respectively. If they work for alternate days and Amit starts the work first, then in how many days  $\frac{35}{36}$  parts of whole work will be completed?**

- A 10 days
- B 12 days
- C 5 days
- D 8 days

**Answer: A**

**Explanation:**

If A is working alone can finish his work in 9 days then his working efficiency will be  $\frac{1}{9}$

Similarly work done by B in 12 days so his efficiency will be  $\frac{1}{12}$

Hence, Work done by A on day 1 is  $\frac{1}{9}$

and work done by B on day 2 is  $\frac{1}{12}$ . it means work done in first 2 days will be

$$\left(\frac{1}{9} + \frac{1}{12}\right) = \frac{7}{36}$$

Hence in 10 days total work done will be  $\frac{5 \times 7}{36} = \frac{35}{36}$ .

**Question 19**

**Aparna changes the marked price of an item to 50% above its C.P. What % of discount allowed in approximately to gain 10%?**

- A 27%
- B 25%
- C 35%
- D 37%

**Answer: A**

**Explanation:**

Let CP =100

MP=150

SP=110

DISCOUNT=150-110=40

$$\% \text{ DISCOUNT} = \left(\frac{40}{150}\right) \times 100 = 26.67\%$$

**RRB Free Videos (You Tube Channel)**

**Question 20**

**A wholesaler purchased 7 hair clips for a rupee. How many for a rupee must he sell to get profit of 40%**

- A 6
- B 5
- C 4
- D 3

**Answer: B**

**Explanation:**



C.P. of 7 hair clips = Re. 1

S.P. of 7 hair clips = 140% of 1 Rupee's

$$\frac{140}{100} = 1.4$$

if he sold 7 pins in 1.4 Rupee's he will got a profit of 40%.

so, cost of 1 pin  $\frac{1.4}{7} = 0.2$ : 20 paise

so in 1 Rupee's he has to sold 5 hair pins:  $5 \times .20 = 1 \text{ Rupee's}$

#### Question 21

If E = 5, GUN = 42 and ROSE = 57, then what is the value of GATE?

A 23

B 32

C 33

D 35

Answer: C

#### Explanation:

E = 5, GUN = 42 and ROSE = 57

here is the addition of the place value

G = 7

U = 21

N = 14

similarly for ROSE

R = 18

O = 15

S = 19

E = 5

so,

$$\text{GATE} = 7 + 1 + 20 + 5 = 33$$

#### Question 22

In which state is the Valley of Flowers National park situated?

A Uttarakhand

B Himachal Pradesh

C Jammu and Kashmir

D Assam

Answer: A

20 RRB NTPC Mocks-Tests Rs.149

**Question 23**

Three numbers are given in which the second is triple the first and is also double the third. If the average of the three numbers is 66, find the first number.

- A 36
- B 54
- C 108
- D 72

**Answer:** A

**Explanation:**

Let the second number = x

Second number is triple the first.

Therefore

$$\text{First number} = \frac{\text{second number}}{3} = \frac{x}{3}$$

Second is double the third means,

$$\text{Third number} = \frac{\text{second number}}{2} = \frac{x}{2}$$

Average of three numbers = 66

$$\left( \frac{x}{3} + x + \frac{x}{2} \right) / 3 = 66$$

Find the LCM of 2 and 3 = 6

$$x = 108$$

second number = 108

$$\text{First number} = \frac{x}{3} = 36$$

**Question 24**

Pihu and Aayu are running on a circular track of diameter 28 m. Speed of Pihu is 48 m/s and that of Aayu is 40 m/s. They start from the same point at the same time in the same direction. When will they meet again for the first time?

- A 8 seconds
- B 11 seconds
- C 13 seconds
- D 14 seconds

**Answer:** B

**Explanation:**

Diameter of circular track = 28 m

$$\text{Radius} = \frac{28}{2} = 14$$

$$\text{Length of the circular track} = 2 \times \pi \times r = 2 \times \pi \times 14 = 88\text{m}$$

Pihu and Aayu are running in the same direction at the same point .

We know that when two persons running in the same direction their speeds will be subtracted

$$\text{Time} = \frac{\text{distance}}{\text{speed}}$$

$$\text{Time} = 11$$

Time when they meet again for first time =  $88/(48-40) = 88/8 = 11$

Hence they will meet again in 11 seconds for the first time.

**Question 25**

**Who replaced B. S. Bassi as the Delhi Police Commissioner?**

- A Alok Kumar Verma
- B Rakesh Maria
- C Dattatray Padsalgikar
- D Neeraj Kumar

**Answer:** A

**10 RRB JE Mocks-Tests Rs.117**

**Instructions**

In the following questions are to be based on the details given below:

A salesman visits 274 houses in a town to find out the views about three products X, Y and Z. He found that 157 use X, 98 use only X, 22 use all the three, 14 use X and Z but not Y, 39 use Y and Z, 48 use only Y

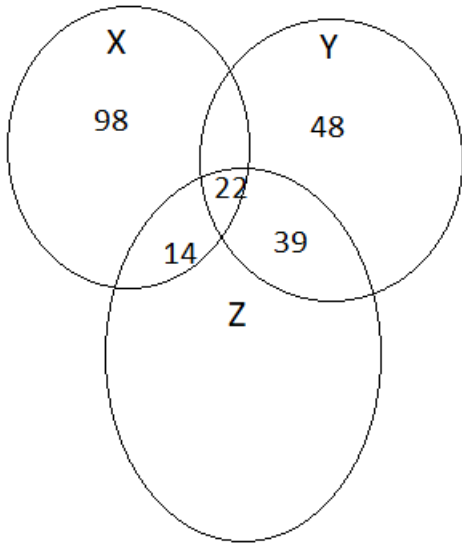
**Question 26**

**Which product is the most popular one?**

- A X
- B Y
- C Z
- D Both X and Z

**Answer:** A

**Explanation:**



$X = 98$

$Y = 48$

$Z = \text{Total} - X - Y - (X \text{ AND } Z) - (X \text{ and } Y) - (X \text{ and } Y)$

$z = (274 - 98 - 48 - 14 - 39 - 23) = 52$

$X \text{ and } Y = (157 - 98 - 14 - 22) = 23$

$Y \text{ and } Z = 39$

$X \text{ and } Z = 14$

$X, Y \text{ and } Z = 22$

so, most popular = X

**Question 27**

**How many use product Z only?**

A 10

B 50

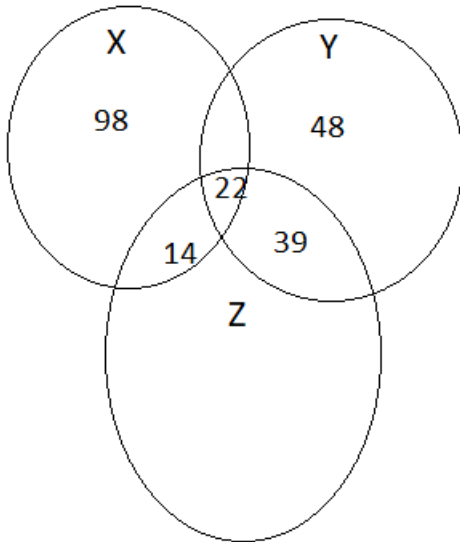
C 52

D 25

**Answer: C**

**Explanation:**





$$Z = \text{Total} - X - Y - (X \text{ AND } Z) - (X \text{ and } Y) - (X \text{ and } Y)$$

$$z = (274 - 98 - 48 - 14 - 39 - 23) = 52$$

**Question 28**

What fraction used at least two products?

A 67/274

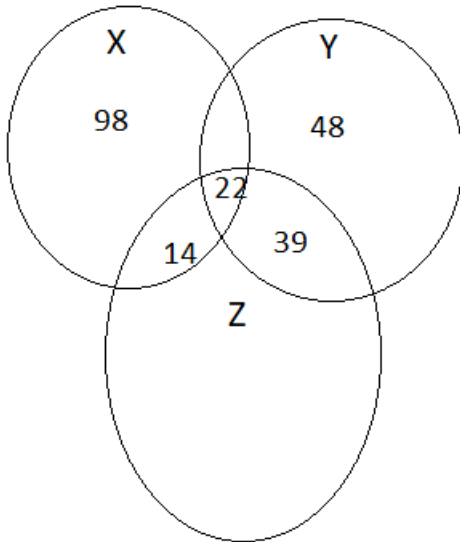
B 76/274

C 73/274

D 37/274

Answer: B

Explanation:



X and Y =  $(157 - 98 - 14 - 22) = 23$

so,

at least two products

$\Rightarrow 14 + 39 + 23 = 76$

fraction =  $\frac{76}{274}$

## RRB General Science Notes (Download Pdf)

### Instructions

For the following questions answer them individually

### Question 29

A superfast Duronto express running at 90 kmph overtakes a bike moving at 36 kmph in 25 seconds. What is the length of the train in meters?

- A 375 m
- B 225 m
- C 275 m
- D 325 m

**Answer:** A

### Explanation:

Speed of Duronto express = 90 km/h

$$= 90 \times \frac{5}{18}$$

$$= 25 \text{ m/s}$$

Speed of Bike = 36 km/h

$$= 36 \times \frac{5}{18}$$

$$= 10 \text{ m/s}$$

Now relative speed of Train with respect to Bike

$$= 25 - 10$$

$$= 15 \text{ m/s}$$

Now as time is 25 sec

=> Distance travelled by last compartment of train to overcome the bike .

$$= \text{Relativespeed} \times \text{time}$$

$$= 15 \times 25$$

$$= 375 \text{ m}$$

So length of train

### Question 30

If EFMIJ means DELHI, then the last letter of the word got by decoding IQBOS is

A R

B T

C K

D M

Answer: A

### Explanation:

EFMIJ means DELHI

E....one letter before D

F....one letter beforeE

M....one letter before L

I...one letter before H

J...one letter before I

now

I...one letter before H

Q...one letter before P

B...one letter before A

O...one letter before N

S ...one letter before R

### Question 31

An Assertion (A) and Reason (R) are given below.

Assertion (A): We prefer to wear white clothes in winter.

Reason (R): White clothes are good reflectors of heat.

Choose the correct option.

A A is true but R is false.

B A is false but R is true.

C Both A and R are true and R is the correct explanation of A.

D Both A and R are true and R is not the correct explanation of A.

Answer: B

**Explanation:**

Assertion (A): We prefer to wear white clothes in winter.

This is false because generally, we prefer black clothes to wear in winter

Reason (R): White clothes are good reflectors of heat.

This reason is true

so,

A is false but R is true.

## RRB GK Material (Download Pdf)

**Question 32**

Select the pair in which the numbers are similarly related as in the given pair: 9 : 27 :: ..... : .....

A 5 : 125

B 8 : 64

C 15 : 135

D 81 : 729

**Answer: D**

**Explanation:**

9 : 27 :: ..... : .....

$3^2 : 3^3$

so 81 : 729 is the answer

=>  $9^2 : 9^3$

**Question 33**

How many princely states were there in India at the time of Independence?

A 347

B 490

C 565

D 418

**Answer: C**

**Question 34**

Given that  $x + (1/x) = 15$ , then find the value of  $5x \div (5x^2 - 11x + 5)$

A 1/3

B 1/4

C 1/5

D 1/11

E 5/64



**Answer:** E

**Explanation:**

$$x + (1/x) = 15$$

$$\Rightarrow x^2 + 1 = 15x$$

$$5x \div (5x^2 - 11x + 5) = 5x \div (5(x^2 + 1) - 11x)$$

$$\Rightarrow 5x \div (15x \times 5 - 11x) = 5/64$$

**Join Competitive Exam Updates Telegram Group**

**Question 35**

**Who is considered as the Father of Modern Indian Renaissance?**

- A Mahatma Gandhi
- B Sardar Vallabhbhai Patel
- C Vinoba Bhave
- D Raja Ram Mohan Roy

**Answer:** D

**Question 36**

**Find the largest number of three digits exactly divisible by 15, 18, 27 and 30.**

- A 870
- B 900
- C 810
- D 780

**Answer:** C

**Explanation:**

we have to find lcm of the numbers

$$15 = 3 \times 5$$

$$18 = 2 \times 3 \times 3$$

$$27 = 3 \times 3 \times 3$$

$$30 = 2 \times 3 \times 5$$

$$\text{so, lcm} = 2 \times 3 \times 3 \times 3 \times 5$$

$$= 270$$

so, 810 is the only number divisible by 270

**Question 37**

**Who invented the Band-aid?**

- A Earle Dickson
- B Alan Gant

- C Louis Pasteur
- D Frank Epperson

Answer: A

## RRB NTPC Previous Papers (Download PDF)

### Question 38

If  $(x+1/x) = 2$ , then find the value of  $(x^3 + 1/x^3) \div (x^{18} + 1/x^{18})$

- A 2/9
- B 5
- C 1
- D 1/9

Answer: C

### Question 39

Find the approximate simple interest on Rs.2000 from March 9, 2010 to May 21, 2010 at 8.25% per annum.

- A Rs 43
- B Rs 37
- C Rs 33
- D Rs 40

Answer: C

#### Explanation:

Here you need to count the number of days

= (31-9) in March + 30 in April + 21 Days in May

= 22 + 30 + 21 = 73 Days =  $\frac{73}{365}$  Years

$N = \frac{1}{5}$  Years

Now, put this is the formula of Simple Interest

$$I = \frac{PRN}{100}$$

$$I = \frac{(2000 \times 8.25 \times 1)}{(100 \times 5)}$$

$$I = \frac{16500}{500} = 33$$

So, Simple Interest will be Rs 33 ... Ans.

### Question 40

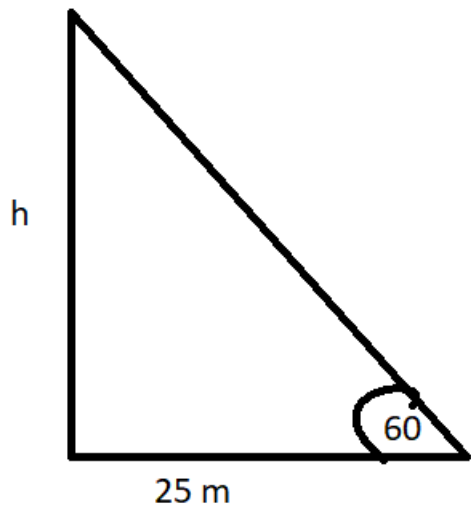
The angle of elevation of the top of a tower at a distance of 25 m from its foot is  $60^\circ$ . The approximate height of the tower is

- A 20.3 m
- B 15.3 m
- C 36.3 m

D 43.3 m

Answer: D

Explanation:



$$\tan 60 = \sqrt{3} = \frac{h}{25}$$

$$\Rightarrow h = 25\sqrt{3}$$

$$\Rightarrow 43.3 \text{ m}$$

## RRB NTPC Free Mock Tests

Question 41

Which of the following refers to the number of pixels per inch, printed on a page?

- A Print Margin
- B Resolution
- C Filter
- D Colour mode

Answer: B

Question 42

In which generation of computer was the mechanical language for programming used?

- A First
- B Second
- C Third
- D Fourth

Answer: A

Question 43

Which is the fastest land animal in the World?

- A Dog
- B Cheetah
- C Tiger
- D Horse

Answer: B

## RRB JE Previous Papers ( Download Pdf)

Question 44

If @ means +, # means - , \$ means x and \* means ÷, then what is the value of  $16 @ 4 \$ 5 \# 72 * 8 =$

- A 27
- B 26
- C 36
- D 35

Answer: A

Explanation:

$$16 @ 4 \$ 5 \# 72 * 8 =$$

$$16 + 4 \times 5 - 72 \div 8 =$$

Apply bodmass

$$16 + 4 \times 5 - 72 \div 8 =$$

$$16 + 4 \times 5 - 9 =$$

$$16 + 20 - 9 =$$

$$16 + 20 - 9 =$$

27

Question 45

4 years ago, the ratio of Vikah's to Rahul's age was 3: 5. After 6 years, this ratio would become 4: 5. Find present age of Rahul.

- A 10
- B 15
- C 14
- D 17

Answer: C

Explanation:

Let the present age of vikas and Rahul be x and y

Given that 4 years ago, the ratio of Vikas's to Rahul's age was 3 : 5

$$\frac{x-4}{y-4} = \frac{3}{5}$$

$$\Rightarrow 5x - 20 = 3y - 12$$

$$\Rightarrow 5x - 3y = 8 \text{ ---equation (1)}$$

Also given that after 6 years, this ratio would become 4 : 5

$$\frac{x+6}{y+6} = \frac{4}{5}$$

$$\Rightarrow 5x + 30 = 4y + 24$$

$$\Rightarrow 5x - 4y = -6 \text{ ---equation (2)}$$

By subtracting equation (2) from equation (1), we get

$$y = 14$$

∴ Present age of Rahul  $y = 14$  years

#### Question 46

If in a certain code language, PROMOTION is written as 365458957, how will the word MONITOR be written in that code language?

A 4579856

B 4578956

C 4597866

D 4578596

Answer: A

#### Explanation:

PROMOTION is written as 365458957

P 3

R 6

O 5

M 4

O 5

T 8

I 9

O 5

N 7

so,

MONITOR = 4579856

## RRB JE Free Mock Test

#### Question 47

If '+' means 'multiplication', '-' means 'division', '×' means 'subtraction' and '÷' means 'addition', then  $9 + 8 \div 8 - 4 \times 9$  is

A 65

B 11

C 26

D 56

Answer: A

Explanation:

$$9 + 8 \div 8 - 4 \times 9$$

$$9 \times 8 + 8 \div 4 - 9$$

Apply bodmass rule

$$9 \times 8 + 8 \div 4 - 9$$

$$9 \times 8 + 2 - 9$$

$$72 + 2 - 9$$

65

Question 48

Who was the American astronaut who returned to Earth after spending 340 days in International Space Station?

A Scott Kelly

B Mikhail Kornienko

C Eric Boe

D Douglas Hurley

Answer: A

Question 49

Knife is an example for

A Lever

B Wedge

C Inclined plane

D Pulley

Answer: B

## Daily Free RRB Online Test

Question 50

The famous tennis player Steffi Graf belongs to which among the following countries?

A USA

B England

C Germany

D Switzerland

Answer: C

**Question 51**

When two liquids do not mix with each other to form a solution, what is it called?

- A Solvent
- B Solute
- C Immiscible
- D Decantation

**Answer: C**

**Instructions**

Study the following information carefully and answer the questions given below it.

- (i) There are six members in a family in which there are two married couples.
- (ii) Sandhya, a lawyer, is married to the engineer and is mother of Charu and Suraj.
- (iii) Bhuvanesh, the teacher, is married Aruna.
- (iv) Aruna has one son and one grandson.
- (v) Of the two married ladies one is a housewife.
- (vi) There is also one student and one male doctor in the family

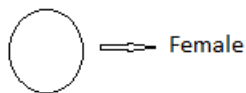
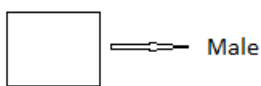
**Question 52**

How is Aruna related to Charu?

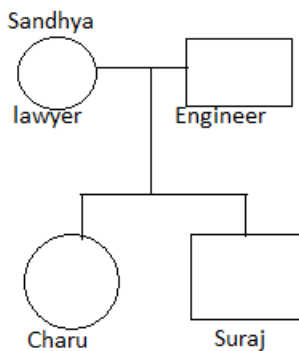
- A Sister
- B Mother
- C Grandfather
- D Grandmother

**Answer: D**

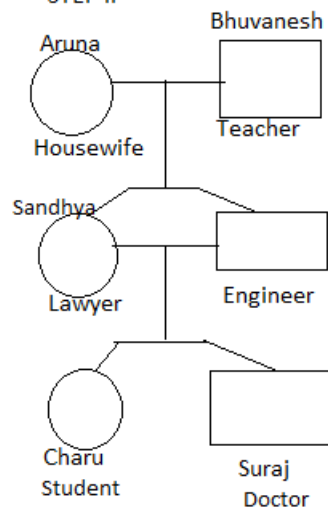
**Explanation:**



**STEP I**



**STEP II**



## RRB Group-D Previous Papers

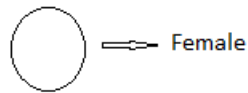
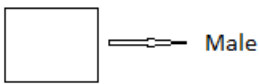
### Question 53

Who among the following is the housewife?

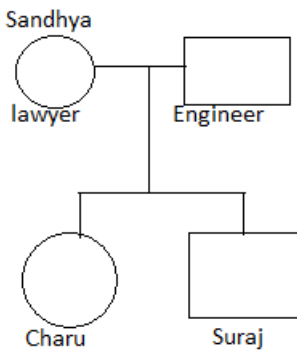
- A Charu
- B Aruna
- C Sandhiya
- D None

Answer: B

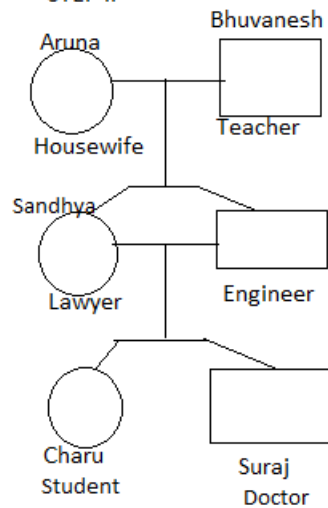
Explanation:



#### STEP I



#### STEP II



Aruna

### Question 54

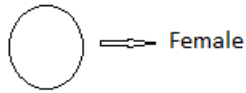
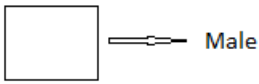
Which of the following is true about the granddaughter in the family?

- A She is a Doctor
- B She is a Teacher
- C She is a Student
- D Data inadequate

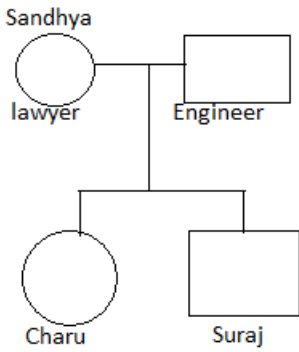
Answer: C

Explanation:

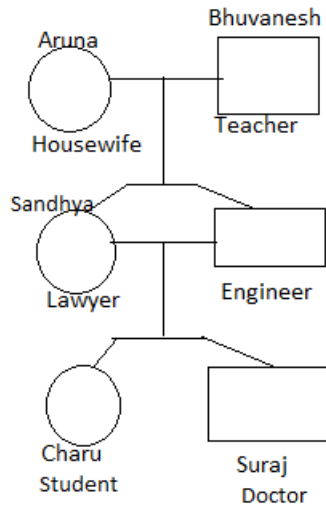




STEP I



STEP II



She is a Student

**Instructions**

For the following questions answer them individually

**Question 55**

Find the correct option which has a similar relationship. Produce : Waste :: Contrast : ?

- A Correct
- B Match
- C Contradict
- D Oppose

**Answer: B**

**Explanation:**

Produce : Waste :: Contrast : match

waste is a opposite of produce

so, match is a opposite of Contrast

**RRB Free Videos (You Tube Channel)**

**Question 56**

An Assertion (A) and a Reason (R) are given below.

Assertion (A): Beri – Beri is a viral infection.

Reason (R): Vitamin deficiency causes diseases.

Choose the correct option.

- A A is false but R is true.
- B A is true but R is false.

C Both A and R are false

D Both A and R are true and R is the correct explanation of A.

**Answer:** A

**Explanation:**

Beri- Beri is not a viral infection It is a disease caused by a vitamin B-1 deficiency, so, Assertion (A) is false  
Vitamin deficiency causes diseases. This is true but not the correct explanation of Assertion

**Question 57**

**Glaciers are formed by**

A Melting snow

B Accumulation of snow

C Heavy hail fall

D High rainfall

**Answer:** B

**Question 58**

12 men and 16 women together can complete a work in 4 days. It takes 80 days for one man alone to complete the same work, then how many days would be required for one woman alone to complete the same work?

A 160

B 150

C 130

D 175

**Answer:** A

**Explanation:**

Given that

$$(12M + 16W) \times 4 \text{ days} = 1M \times 80 \text{ days}$$

$$\Rightarrow 48M + 64W = 80M$$

$$\Rightarrow 32M = 64W$$

$$\Rightarrow 1M = 2W.$$

From the given data,

1M can do the work in 80 days

$$\Rightarrow 1M \text{ can do the same work in } 80/1 = 80 \text{ days.}$$

$$\Rightarrow 2W \text{ can do the same work in } 80 \text{ days.}$$

$$\Rightarrow 1W \text{ can do the same work in } 80 \times 2 = 160 \text{ days.}$$

Hence, 1 woman can do the same work in 160 days.

## 20 RRB NTPC Mocks-Tests Rs.149

**Question 59**

Jalal, Amit and Feroz enter into partnership. Jalal invests 4 times as much as Amit and Amit invests three-fourth of what Feroz invests. At the end of the financial year, the total profit earned is Rs. 19,000. Find the share for Jalal.

- A Rs.15,000
- B Rs.12,000
- C Rs.13,000
- D Rs.10,000

**Answer: B**

**Explanation:**

Let the investment of Jalal, Amit and Feroz be x, y and z

Given that invests 4 times as much as Amit and Amit invests  $\frac{3}{4}$  of what Feroz invests.

$$\Rightarrow x = 4y \text{ and } y = \frac{3}{4}z$$

Given that total profit at the end of year is Rs.19000

$$\Rightarrow x + y + z = 19000$$

$$\Rightarrow 4y + y + \frac{4y}{3} = 19,000$$

$$\Rightarrow 12y + 3y + 4y = 57,000$$

$$\Rightarrow 19y = 57,000 \Rightarrow y = 3,000$$

$$\text{Jalal investment (x)} = 4y = 4(3,000) = \text{Rs.12,000}$$

**Question 60**

**How many astronauts have walked on the moon?**

- A 2
- B 5
- C 8
- D 12

**Answer: D**

**Question 61**

**Identify the odd one from the list below.**

- A Stream
- B Bridge
- C Canal
- D River

**Answer: B**

**Explanation:**

Stream, Canal and River are waterways channels where water can flow, whereas Bridge is a structure built to span a physical obstacle, such as a body of water, valley, or road, without closing the way underneath

**Question 62**

An Assertion (A) and Reason (R) are given below.

Assertion (A): Leakages in household gas cylinders can be detected.

Reason (R): LPG has a strong smell.

Choose the correct option.

- A Both A and R are true and R is the correct explanation of A.
- B Both A and R are true and R is not the correct explanation of A.
- C Both A and R are false
- D A is true but R is false.

**Answer:** D

**Explanation:**

Assertion (A): Leakages in household gas cylinders can be detected is true

Reason (R): LPG has a strong smell

This is false because it is odourless.

**Question 63**

Who was sworn in as the Prime Minister of Nepal in 2015?

- A Sushil Koirala
- B Bidhya Devi Bhandari
- C Khadga Prasad Sharma Oli
- D Kul Bahadur Gurung

**Answer:** C

**Question 64**

Who is the current FIFA president?

- A Sepp Blatter
- B Gianni Infantino
- C Issa Hayatou
- D Dunga

**Answer:** B

## RRB General Science Notes (Download Pdf)

**Question 65**

Who won the 2015 Australian Grand Prix?

- A Louis Hamilton
- B Kimi Raikkonen
- C Jenson Button

D Sebastian Vettel

Answer: A

Question 66

What are the waves that are used to penetrate solids and are used by doctors and at airports?

A Sound wave

B X-rays

C Electro magnetic

D Mechanical

Answer: B

Question 67

If  $(7x+5)^\circ$  and  $(x+5)^\circ$  are complementary angles. then find value of x.

A 10

B 20

C 30

D 40

Answer: A

Explanation:

$$7x + 5 + x + 5 = 90$$

$$8x + 10 = 90$$

$$8x = 90 - 10$$

$$8x = 80$$

$$x = 10$$

## RRB GK Material (Download Pdf)

Question 68

Rearrange the jumbled up letters in their natural sequence and find the odd one out.

A EARSUQ

B ONGPOYL

C NAEGRCLE

D RGETESNH

Answer: D

Explanation:

EARSUQ: SQUARE

ONGPOYL: POLYGON

NAEGRCLE : RECTANGLE

RGETESNH this is odd one out ..all is shape except RGETESNH

Question 69

Choose the pair which is related in the same way as the words in the first pair from the given choices

Savage : Civilized :

- A Brutal : Heroic
- B Wild : Animal
- C Dark : Light
- D Illiterate : Book

Answer: C

**Explanation:**

Savage means violent. Its opposite is peaceful or civilized. Therefore, we need to choose antonyms.

Brutal (violent) : Heroic(brave) → Not Antonyms

Wild : Animal → Clearly not antonyms

**Dark : Light → Clearly are antonyms**

Illiterate : Book → Not antonyms

Hence, Dark : Light is the correct answer.

Question 70

In a college, 25% of male faculties are same in number as 113R1 of the female faculties. What is the ratio of male faculty to female faculty in that college?

- A 4:3
- B 3:4
- C 2:3
- D 3:2

Answer: A

**Join Competitive Exam Updates Telegram Group**

Question 71

If A denotes '+', B denotes '-', C denotes '÷', D denotes 'x' then the value of the expression 9 D 48 C 6 B 16 A 3 is

- A 53
- B 35
- C 59
- D 56

Answer: C

**Explanation:**

9 D 48 C 6 B 16 A 3

A denotes '+', B denotes '-', C denotes '÷', D denotes 'x'

$$9 \times 48 \div 6 - 16 + 3$$

$$72 - 16 + 3$$

$$=59$$

**Question 72**

What is the process of slow cooling of hot glass called?

- A Annealing
- B Humidifying
- C Condensation
- D Decantation

**Answer: A**

**Question 73**

Find the products :  $0.5 \times 0.05 \times .0.005 \times 500$

- A 0.0625
- B 0.00625
- C 0.06255
- D 0.625

**Answer: A**

**Explanation:**

$$0.5 \times 0.05 \times .0.005 \times 500$$

$$0.5 \times 0.005 \times 25$$

$$0.0025 \times 25 = 0.0625$$

**RRB NTPC Previous Papers (Download PDF)**

**Question 74**

Boxing is related to Ring in the same way as Tennis is related to

- A Court
- B Ground
- C Pool
- D Arena

**Answer: A**

**Question 75**

Find the degree of the polynomial  $8x^4 + 2x^2y^3 + 4$

- A 4
- B 5

C 0

D 1

**Answer: B**

**Explanation:**

We observe that the above polynomial has four terms. Here the first term is  $8x^4$ , the second term is  $2x^2y^3$ , the third term is 4.

Now we will determine the exponent of each term.

(i) the exponent of the first term  $8x^4 = 4$

(ii) the exponent of the second term  $2x^2y^3 = 2 + 3 = 5$

(iii) the exponent of the third term  $4 = 0$

Since, the greatest exponent is 5, the degree of  $8x^4 + 2x^2y^3 + 4$  is also 5.

**Question 76**

**In which Schedule to the Constitution of India is the list of States and Union Territories given?**

A First Schedule

B Second Schedule

C Fourth Schedule

D Sixth Schedule

**Answer: A**

## RRB NTPC Free Mock Tests

**Question 77**

**In a certain code, TABLE is written as GZYOY, then CHAIR can be written as**

A XRZSI

B XZSRI

C XSRZI

D XSZRI

**Answer: D**

**Explanation:**

If in the word, a letter is the nth letter from the beginning of English alphabet, then in the code the corresponding letter is the nth letter from the end.

**Question 78**

**Milk of Magnesia is used as a**

A Laxative



- B Pain killer
- C Sedative
- D Antibiotic

Answer: A

**Question 79**

In a number system, on dividing 11509 by a certain number, Mukesh gets 71 as quotient and 7 as remainder. What is the divisor?

- A 132
- B 172
- C 182
- D 162

Answer: D

**Explanation:**

As per the given data,

We know that dividend = divisor  $\times$  quotient + remainder

$$\Rightarrow 11509 = \text{divisor} \times 71 + 7$$

$$\Rightarrow 11502 = \text{divisor} \times 71$$

$$\Rightarrow \text{Divisor} = 162$$

## RRB JE Previous Papers ( Download Pdf)

**Instructions**

Study the following table and answer the questions:

The table below depicts the Number of Books Sold by 5 cities during 5 months.

Months	City A	City B	City C	City D	City E
June	213	200	195	253	229
July	156	208	216	187	175
August	177	197	185	181	215
September	220	145	235	265	231
October	253	188	278	243	249

**Question 80**

if 30% of the total number of books sold by City B, D and E together in July were academic books, how many non – academic books were sold by the same Cities together in the same month?

- A 379
- B 389
- C 399
- D 309

Answer: C

**Explanation:**

total number of books sold by City B in July=208

total number of books sold by City D in July=187

total number of books sold by City E in July=175

total number of books sold by City B, D and E together in July=208+187+175=570

30% of 570 =  $\frac{30}{100} \times 570 = 171$

non – academic books=570-171=399

**Question 81**

What is the respective ratio between the total number of books sold by City A in July and September together and total number of books sold by City E in August and October together?

A 57 : 49

B 49 : 57

C 58 : 47

D 47 : 58

**Answer: D**

**Explanation:**

total number of books sold by City A in July and September=156+220=376

total number of books sold by City E in August and October=215+249=464

Ratio=376:464=47:58

**Question 82**

What is the average number of books sold by City C in July, September and October together?

A 243

B 242

C 234

D 224

**Answer: A**

**Explanation:**

Total book sold by City C in July, September and October=216+235+278=729

Average=729/3=243

## RRB JE Free Mock Test

**Instructions**

For the following questions answer them individually

**Question 83**

Find the missing value denoted by '?'  $3 : 243 :: 5 : ?$

A 625

B 465

C 3125

D 425

**Answer: C**

**Explanation:**

$$= 3^5 = 243$$

Similarly

$$5^5 = 3125$$

**Question 84**

If the standard deviation of a population is 3, what would be the population variance?

A 9

B 6

C 8

D  $\sqrt{3}$

**Answer: A**

**Explanation:**

$$\text{Variance} = (\text{standard deviation})^2$$

So,

$$\text{The population variance} = (\text{standard deviation of population})^2$$

$$\text{The population variance} = (9)^2$$

$$\text{The population variance} = 81$$

**Question 85**

Below are given statements followed by two conclusions I and II. You have to take the given statements to be true even if they seem to be at variance from commonly known facts.

**Statements:**

**Some buds are flowers.**

**All flowers are trees.**

**All trees are leaves.**

**Conclusions:**

**I. Some leaves are buds.**

**II. All flowers are leaves.**

Decide which of the below options logically follows the given conclusions.

A Only Conclusion I follows

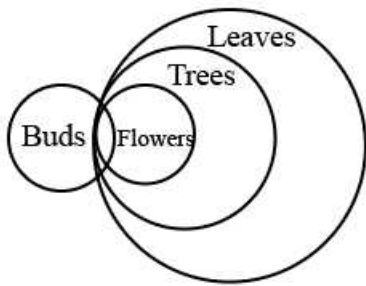
B Only Conclusion II follows

C Both I and II follow

D Neither I nor II follows

**Answer: C**

**Explanation:**



I. Some leaves are buds → True.

II. All flowers are leaves → True.

Hence, Both conclusion I and II follow.

## Daily Free RRB Online Test

### Question 86

Find the LCM of the following fractions:  $\frac{2}{3}$  ,  $\frac{8}{9}$  ,  $\frac{16}{27}$  ,  $\frac{32}{81}$

A  $\frac{32}{81}$

B  $\frac{81}{32}$

C  $\frac{32}{3}$

D  $\frac{11}{41}$

Answer: C

### Explanation:

LCM of fractions is LCM of the numerators divided by HCF of denominators.

LCM (2, 8, 16, 32) = 32

HCF (3, 9, 27, 81) = 3

So LCM ( $\frac{2}{3}$ ,  $\frac{8}{9}$ ,  $\frac{16}{27}$ ,  $\frac{32}{81}$ ) =  $\frac{32}{3}$

### Question 87

In which state is Koyna dam located?

A Madhya Pradesh

B Rajasthan

C Maharashtra

D Gujarat

Answer: C

### Question 88

Which planet is the nearest in size to Earth?

A Mercury

B Mars

C Venus

D Saturn

Answer: C

## RRB Group-D Previous Papers

Question 89

The mean of a distribution is 15 and the standard deviation is 5. What is the value of the coefficient variation?

- A 16.66%
- B 66.66%
- C 33.33%
- D 100%

Answer: C

**Explanation:**

The Coefficient of variation is useful when we want to compare results from two different surveys or tests that have different measures or values.

$$CV = (SD \div \text{MEAN}) \times 100$$

$$= (5 \div 15) \times 100$$

$$CV = 33.33$$

Question 90

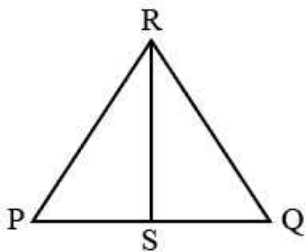
If S is the midpoint of a straight line PQ and R is a point different from S, such that PR=RQ, then

- A  $\angle PRS = 90^\circ$
- B  $\angle QRS = 90^\circ$
- C  $\angle PSR = 90^\circ$
- D  $\angle QSR < 90^\circ$

Answer: C

**Explanation:**

From the given data, figure can be drawn as



Here PR = RQ, and S is the mid point of PQ

So,  $\angle PSR = 90^\circ$

Question 91

Who constructed the Hawa Mahal?

- A Maharaja Bhagvat Singh
- B Maharaja Jagatjit Singh

C Maharaja Sawai Pratap Singh

D Maharajah Jaswant Singh

Answer: C

## RRB Free Videos (You Tube Channel)

### Question 92

If '>' means 'minus', '<' means 'plus', '4`' means 'multiplied by' and '#`' means 'divided by', then what would be the value of  $27 < 81 \#9 > 6 =$

A 32

B 30

C 36

D 25

Answer: B

### Question 93

Which king's story is the subject of the play Mudrarakshasa?

A Jaychand

B Chandra Gupta II

C Chandrapeda

D Chandragupta Maurya

Answer: D

### Question 94

The amount of alcohol in two different medicines is 1.5% and 2.5% respectively. In what ratio they should be mixed such that amount of alcohol in the new mixture is 3.5%

A 1:2

B 2:1

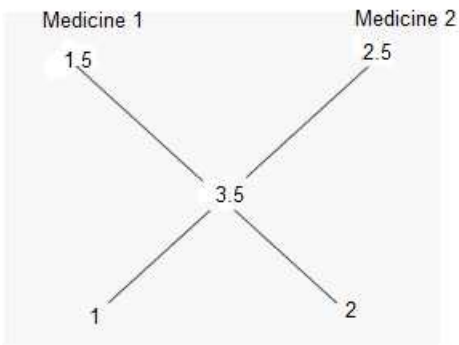
C 3:2

D 2:3

Answer: B

### Explanation:

By Rule of alligation,



Medicine 1: Medicine 2=2:1

## 20 RRB NTPC Mocks-Tests Rs.149

### Question 95

Who was responsible for building the Great wall of China?

- A Qin Shi Huang
- B Fa-Hien
- C Xuanzang or Hiuen Tsang
- D Yijing

Answer: A

### Question 96

Martin Crowe who passed away recently was the former cricket captain of which country?

- A Australia
- B England
- C New Zealand
- D South Africa

Answer: C

### Question 97

If 70% of  $5/7^{th}$  of a number is 90. find the number.

- A 150
- B 180
- C 160
- D 190

Answer: B

### Explanation:

Let the number be 'x'

$$\frac{70}{100} \times \frac{5}{7} \times x = 90$$

$$x = 180$$

## 10 RRB JE Mocks-Tests Rs.117

### Question 98

Which among the following is called quicksilver?

- A Titanium
- B Mercury
- C Platinum
- D Radium

Answer: B

### Question 99

Which of the following is a vertebrate?

- A Kiwi
- B Sponges
- C Star fish
- D Threadworm

Answer: A

### Question 100

Find the total Simple Interest on Rs.500 at 7% per annum, on Rs.700 at 10% per annum and on Rs.1000 at 4% per annum for 3 years.

- A 435
- B 500
- C 700
- D 1000

Answer: A

### Explanation:

We know that  $S.I = P \times T \times R/100$  where S.I = Simple Interest

$$\Rightarrow S.I_1 = 500 \times 1 \times 7/100 = \text{Rs.}35$$

$$\Rightarrow S.I_2 = 700 \times 1 \times 10/100 = \text{Rs.}70$$

$$\Rightarrow S.I_3 = 1000 \times 1 \times 4/100 = \text{Rs.}40$$

$$\therefore \text{Total simple interest for 3 years} = 3(S.I_1 + S.I_2 + S.I_3) = 3(35 + 70 + 40) = 3(145) = \text{Rs.}435$$

**RRB General Science Notes (Download Pdf)**





[RRB NTPC Previous Papers \(Download PDF\)](#)

[RRB NTPC Free Mock Tests](#)

[RRB JE Previous Papers \( Download Pdf\)](#)

[RRB JE Free Mock Test](#)

[Daily Free RRB Online Tesrt](#)

[RRB Group-D Previous Papers](#)

[RRB Free Videos \(You Tube Channel\)](#)

[20 RRB NTPC Mocks-Tests Rs.149](#)

[10 RRB JE Mocks-Tests Rs.117](#)

[RRB General Science Notes \(Download Pdf\)](#)

[RRB GK Material \(Download Pdf\)](#)

[Join Competitive Exam Updates Telegram Group](#)