



## SSC CHSL 10 Jan 2017 Evening Shift

All rights reserved. No part of this publication may be reproduced, distributed, or transmitted in any form or by any means, electronic, mechanical, photocopying, recording or otherwise, or stored in any retrieval system of any nature without the permission of cracku.in, application for which shall be made to [support@cracku.in](mailto:support@cracku.in)

## Reasoning

### Instructions

For the following questions answer them individually

### Question 1

Select the related word/letters/number from the given alternatives.

Omelette : Egg :: Cloth : ?

- A Ore
- B Wood
- C Fibre
- D Pulp

Answer: C

### Explanation:

Expression = Omelette : Egg :: Cloth : ?

Omelette is made from egg, similarly cloth is made from *fibre*.

=> Ans - (C)

**25 SSC CHSL Mocks for just Rs. 149**

### Question 2

Select the related word/letters/number from the given alternatives.

JK : PQ :: FG : ?

- A HI
- B TU
- C EF
- D UT

Answer: B

### Explanation:

Expression = JK : PQ :: FG : ?

When the code is reversed, alphabets at the corresponding position from the *reverse* end are written.

A	B	C	D	E	F	G	H	I	J	K	L	M	N	O	P	Q	R	S	T	U	V	W	X	Y	Z
↓	↓	↓	...																				...	↓	
Z	Y	X	W	V	U	T	S	R	Q	P	O	N	M	L	K	J	I	H	G	F	E	D	C	B	A

Similarly, F -> U and G -> T

Thus, FG : TU

=> Ans - (B)

### Question 3

Select the related word/letters/number from the given alternatives.

Tu : Ab :: Cd : ?

- A jk

B JK

C kj

D Jk

**Answer: D**

**Explanation:**

Expression = Tu : Ab :: Cd : ?

The pattern followed is in reverse order of alphabetical series i.e. from the alphabet "A" if we go in reverse order than the alphabet "T" will appear in seventh place.

T	u
(+7)	(+7)
A	b

Similarly, Cd : Jk

C	d
(+7)	(+7)
J	k

=> Ans - (D)

**Question 4**

Select the related word/letters/number from the given alternatives.

7 : 56 :: 9 : ?

A 30

B 90

C 60

D 50

**Answer: B**

**Explanation:**

Expression = 7 : 56 :: 9 : ?

The pattern followed is =  $x : x(x + 1)$

Eg :- 7 : 7(7 + 1) = 7 : 56

Similarly, 9 × (9 + 1) = 9 × 10 = 90

=> Ans - (B)

## SSC CHSL Free Mock Test

**Question 5**

Find out the odd word/letters/number/number pair from the given alternatives.

A Honesty

B Veracity

C Deceit

D Sincerity

**Answer: C**

**Explanation:**

Honesty, veracity and sincerity are synonyms meaning truthfulness, hence deceit is the odd one out.

=> Ans - (C)

**Question 6**

Find out the odd word/letters/number/number pair from the given alternatives.

A TBC

B DEZ

C VUW

D BAM

**Answer: A**

**Explanation:**

The last three letters contain one vowel, hence TBC is the odd one out.

=> Ans - (A)

**Question 7**

Find out the odd word/letters/number/number pair from the given alternatives.

A 216

B 841

C 676

D 784

**Answer: A**

**Explanation:**

$$216 = (6)^3$$

$$841 = (29)^2$$

$$676 = (26)^2$$

$$784 = (28)^2$$

=> Ans - (A)

**SSC CHSL Previous Papers (DOWNLOAD PDF)**

**Question 8**

Find out the odd word/letters/number/number pair from the given alternatives.

A 422

B 716

C 928

D 734

**Answer: C**

**Explanation:**

The positive difference between the first two digits is equal to the last digit, but  $9 - 2 \neq 8$ , hence 928 is the odd one out.

=> Ans - (C)

**Question 9**

A series is given with one term missing. Choose the correct alternative from the given ones that will complete the series.

?, Oxygen, Argon, Carbon dioxide

- A Nitrogen
- B Water vapour
- C Methane
- D Carbon monoxide

**Answer: A**

**Explanation:**

The gases are given in decreasing order of their content in the atmosphere.

= Nitrogen -> Oxygen -> Argon -> Carbon dioxide

=> Ans - (A)

**Question 10**

A series is given with one term missing. Choose the correct alternative from the given ones that will complete the series.

4, 6, 9, 13.5, ?

- A 23.25
- B 32.5
- C 31.25
- D 20.25

**Answer: D**

**Explanation:**

Each term is multiplied by 1.5

$$4 \times 1.5 = 6$$

$$6 \times 1.5 = 9$$

$$9 \times 1.5 = 13.5$$

$$13.5 \times 1.5 = \mathbf{20.25}$$

=> Ans - (D)

**SSC CGL Previous Papers (DOWNLOAD PDF)**

**Question 11**

In the following question, two statements are given each followed by two conclusions I and II. You have to consider the statements to be true even if they seem to be at variance from commonly known facts. You have to decide which of the given conclusions, if any, follows from the given statements.

**Statements:**

- (I) Real number includes the natural number.
- (II) Natural number is not included in whole number.

**Conclusion:**

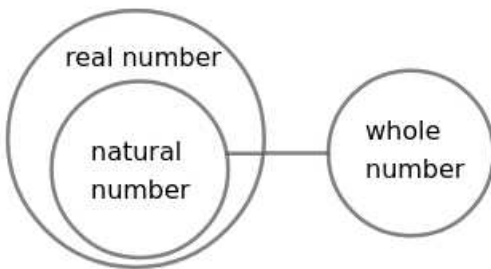
- (I) Natural number is not whole number.
- (II) Real number is a natural and whole number.

- A Conclusion I follows
- B Conclusion II follows
- C Neither I nor II follows
- D Both I and II follows

**Answer: A**

**Explanation:**

The basic diagram for the given statements is



- (I) Natural number is not whole number

From the basic diagram, natural number is not whole number. Hence conclusion I follows.

- (II) Real number is a natural and whole number

From the basic diagram, real number is not whole number. Hence conclusion II do not follow.

∴ Only Conclusion I follows the given statements.

Hence, the correct answer is Option A

**Question 12**

A series is given with one term missing. Choose the correct alternative from the given ones that will complete the series.

WW, ss, QQ, ? , KK

- A gg
- B MM
- C mm
- D ee

**Answer: C**

**Explanation:**

The pattern followed is that alternate term are written in capital and small letters.

WW (-4 letters) = ss (-2 letters) = QQ (-4 letters) = mm (-2 letters) = KK

Thus, missing term = **mm**

=> Ans - (C)

**Question 13**

A series is given with one term missing. Choose the correct alternative from the given ones that will complete the series.

**IG, MK, RP, ?**

**A** ZA

**B** AB

**C** XV

**D** GE

**Answer: C**

**Explanation:**

Expression : IG, MK, RP, ?

The pattern followed in each letter of the terms is :

1st letter : I (+4 letters) = M (+5 letters) = R (+6 letters) = X

2nd letter : G (+4 letters) = K (+5 letters) = P (+6 letters) = V

Thus, missing term = **XV**

=> Ans - (C)

## SSC CGL Free Mock Test (Latest Pattern)

**Question 14**

The sum of the ages of Anuj and his mother is 32, and his father's age is 38 years. If his father is 8 years elder to his mother, what is the age (in years) of Anuj?

**A** 4

**B** 2

**C** 1

**D** 5

**Answer: B**

**Explanation:**

Anuj's father's age = 38 years

=> His mother's age =  $38 - 8 = 30$  years

Also, sum of the ages of Anuj and his mother = 32

$\therefore$  Anuj's age =  $32 - 30 = 2$  years

=> Ans - (B)

**Question 15**

Arrange the given words in the sequence in which they occur in the dictionary.

i. Amoeba

ii. Amok

iii. Amiable

iv. Amalgamate

A ii, i, iv, iii

B iii, iv, ii, i

C iv, iii, i, ii

D ii, iv, iii, i

**Answer: C**

**Explanation:**

As per the order of dictionary :

= Amalgamate -> Amiable -> Amoeba -> Amok

≡ iv, iii, i, ii

=> Ans - (C)

**Question 16**

In a certain code language, "ROYALTY" is written as "ZUMBZPS". How is "LINGER" written in that code language?

A SFHJOM

B SFHOJM

C SHFOJM

D SHFOMJ

**Answer: B**

**Explanation:**

"ROYALTY" is written as "ZUMBZPS"

The pattern followed when the word is reversed is :

Y	T	L	A	Y	O	R
(+1)	(+1)	(+1)	(+1)	(+1)	(+1)	(+1)
Z	U	M	B	Z	P	S

Similarly, reverse of LINGER :

R	E	G	N	I	L
(+1)	(+1)	(+1)	(+1)	(+1)	(+1)
S	F	H	O	J	M

=> Ans - (B)

## SSC CHSL Important Questions and Answers (Download PDF)

**Question 17**

In the following question, select the missing number from the given series.

16	81	49
6	5	6
52	106	?

A 24

B 32

C 20



D 85

Answer: D

**Explanation:**

In each column the number at the end is obtained by adding the square of the second number to the first number.

$$\text{Eg :- } (6)^2 + 16 = 36 + 16 = 52$$

$$(5)^2 + 81 = 25 + 81 = 106$$

$$\text{Similarly, } (6)^2 + 49 = 36 + 49 = 85$$

=> Ans - (D)

**Question 18**

If "A" denotes " $\times$ ", "C" denotes " $-$ ", "D" denotes " $+$ " and "B" denotes " $\div$ ", then  $8 \text{ C } 45 \text{ D } 180 \text{ B } 9 \text{ A } 11 = ?$

A 141

B 142

C 183

D 143

Answer: C

**Explanation:**

Expression :  $8 \text{ C } 45 \text{ D } 180 \text{ B } 9 \text{ A } 11 = ?$

$$\equiv 8 - 45 + 180 \div 9 \times 11$$

$$= -37 + (20 \times 11)$$

$$= -37 + 220 = 183$$

=> Ans - (C)

**Question 19**

Which set of letters when sequentially placed at the gaps in the given letter series shall complete it?

\_b\_b\_da\_bbcd

A dc dc

B ca ca

C ad dd

D ab cb

Answer: D

**Explanation:**

The pattern followed is that in groups of 6, the term 'abbbcd' is repeated.

$$= \text{abbbcd abbbcd}$$

=> Ans - (D)

## SSC CHSL Study Material

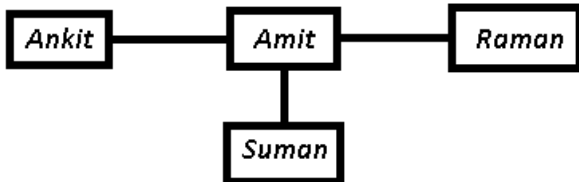
**Question 20**

Amit's house is to the east of Ankit's house. Suman's house is to the south of Amit's house. Raman's house is to the east of Amit's house. In which direction is Raman's house with respect to Suman's house?

- A East
- B North-east
- C South-east
- D South

Answer: B

Explanation:



Amit's house is to the east of Ankit's house. Suman's house is to the south of Amit's house.

Also, Raman's house is to the east of Amit's house.

Thus, Raman's house is north-east of Suman's house.

=> Ans - (B)

**Question 21**

A word is represented by only one set of numbers as given in any one of the alternatives. The sets of numbers given in the alternatives are represented by two classes of alphabets as shown in the given two matrices. The columns and rows of Matrix-I are numbered from 0 to 4 and that of Matrix-II are numbered from 5 to 9. A letter from these matrices can be represented first by its row and next by its column, for example, 'N' can be represented by 21, 67 etc. and 'R' can be represented by 66, 57 etc. Similarly, you have to identify the set for the word 'NUMBER'.

**Matrix - I**

	0	1	2	3	4
0	Q	O	A	N	B
1	W	I	N	H	L
2	E	N	S	G	O
3	N	Y	D	O	M
4	M	T	O	F	A

**Matrix - II**

	5	6	7	8	9
5	Z	M	R	S	Q
6	X	R	N	W	A
7	C	S	Y	E	U
8	S	N	T	E	S
9	V	B	E	R	U

- A 67, 99, 56, 04, 02, 57
- B 12, 79, 56, 04, 20, 34
- C 86, 99, 56, 43, 20, 57
- D 21, 79, 56, 04, 20, 57

Answer: D

Explanation:

(A) : 67, 99, 56, 04, 02, 57 = NUMBAR

(B) : 12, 79, 56, 04, 20, 34 = NUMBEM

(C) : 86, 99, 56, 43, 20, 57 = NUMFER

(D) : 21, 79, 56, 04, 20, 57 = **NUMBER**

=> Ans - (D)

**Question 22**

Introducing a boy Ankur says, "He is the son of the only sister of my grandfather's daughter-in-law". How is the boy related to Ankur?

- A Nephew
- B Son-in-law
- C Son
- D Cousin

Answer: D

**Explanation:**

Ankur's grandfather's daughter-in-law = Ankur's mother or aunt

Only sister of Ankur's mother or aunt = Ankur's aunt or mother

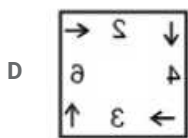
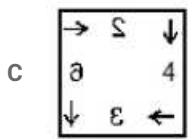
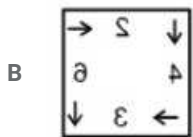
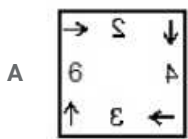
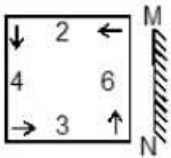
Now, that boy is son of Ankur's aunt, => Ankur and the boy are cousins.

=> Ans - (D)

SSC CHSL Free App

**Question 23**

If a mirror is placed on the line MN, then which of the answer figures is the right image of the given figure ?



Answer: D

**Explanation:**

A vertical mirror is placed, so the object on the left will appear right in reverse position and vice-versa.

So the numbers in the middle will be reversed and their shape will also be changed, thus the first and third options will be eliminated.

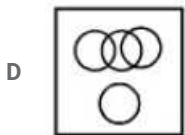
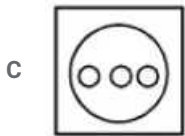
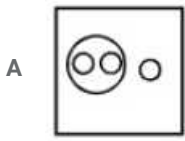
Also, in the question figure, the arrow at bottom right (pointing upwards) will appear at bottom left side still facing up, hence fourth option is the right image.

=> Ans - (D)

Question 24

Identify the diagram that best represents the relationship among the given classes.

Festivals, Eid, Durga Pooja, Deepawali



Answer: C

Explanation:

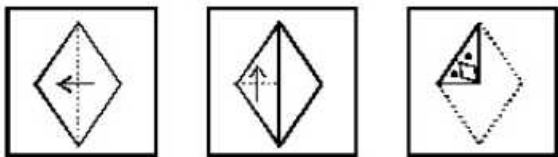
Eid, Durga Pooja and Deepawali are all different types of Indian festivals, hence the venn diagram that best describes above relation is :



=> Ans - (C)

Question 25

A piece of paper is folded and punched as shown in the below question figures. From the given answer figures, indicates how it will appear when opened ?



C



D



Answer: B

**Explanation:**

When the paper is unfolded, the pattern of cutting will be similar in the four parts of the paper.

When the paper is unfolded first to the bottom, a rhombus with two dots will appear similarly towards the bottom left.

When the paper is unfolded again to the right, one rhombus and two dots each will appear similarly towards the top right and bottom right of the paper.

∴ When the paper is unfolded it will appear as shown below



Hence, the correct answer is Option B

## Daily Free SSC Practice Set

### General Awareness

**Instructions**

For the following questions answer them individually

**Question 26**

**DNS is a networking term that refers to**

- A Domain Name System
- B Digital Network Service
- C Disk Numbering Sequence
- D Data Number System

Answer: A

## Free SSC Study Material (18,000 Solved Questions)

**Question 27**

**Telephone exchange was invented by?**

- A Tivadar Puskas
- B Joseph Priestley
- C Petrache Poenaru
- D James Leonard Plimpton

Answer: A

**Question 28**

Scurvy (bleeding of gums) is caused by the deficiency of which vitamin?

- A Vitamin K
- B Vitamin B2
- C Vitamin C
- D Vitamin A

Answer: C

**Question 29**

Achras sapota is the scientific name of

- A Custard Apple
- B Gulmohar
- C Tamarind
- D Chiku

Answer: D

**1500+ Very Important Free SSC Solved Questions**

**Question 30**

Prawn belongs to the phylum

- A Arthropoda
- B Cnidaria
- C Echinodermata
- D Chordata

Answer: A

**Question 31**

What does a catalyst do in a reaction?

- A Changes potential energy of reactants
- B Changes kinetic energy of reactants
- C Changes potential energy of products
- D Changes activation energy

Answer: D

Question 32

Adding which substance gives green colour to glass?

- A Calcium oxide
- B Iron oxide
- C Chromium oxide
- D Manganese oxide

Answer: C

**SSC Exam Update Videos & Free Study Material (YouTube Channel)**

Question 33

Ellora Caves is in

- A Karnataka
- B Madhya Pradesh
- C Maharashtra
- D Rajasthan

Answer: C

Question 34

\_\_\_ festival is celebrated on a full-moon day.

- A Dussehra
- B Holi
- C Christmas
- D Rakhi

Answer: B

Question 35

If demand curve for a fishing rod is  $D = 37000 - 11P$  and supply curve is  $S = 12000 + 9P$ , find the equilibrium quantity?

- A 1250 units
- B 23250 units
- C 52350 units
- D 2500 units

Answer: B

**Latest Job Updates on Telegram - Join here**

**Question 36**

**Balance of Trade is the difference between which factors?**

- A Country's Income and Expense
- B Country's Exports and Imports
- C Country's Tax Revenue and Expense
- D Country's capital inflow and outflow

**Answer: B**

**Question 37**

**Which of the following gases if present in the atmosphere can be detected by its odour?**

- A Ethane
- B Sulphur dioxide
- C Hydrogen
- D Carbon monoxide

**Answer: B**

**Question 38**

**The number of biogeographical zones in India are**

- A 2
- B 10
- C 5
- D 6

**Answer: B**

**Join SSC Daily Quiz Telegram Group**

**Question 39**

**\_\_\_\_\_ is an indigenous light combat aircraft of India?**

- A Vishal
- B Garv
- C Tejas
- D Dhanush

**Answer: C**

**Question 40**

**In which direction does the earth rotates around its axis?**



- A east to west
- B west to east
- C north to south
- D south to east

**Answer: B**

**Question 41**

**Which state in India receives the highest rainfall?**

- A Meghalaya
- B Rajasthan
- C Uttarakhand
- D Kerala

**Answer: A**

**25 SSC CHSL Mocks for just Rs. 149**

**Question 42**

**Tipu Sultan was also known as Tiger of \_\_\_\_\_.**

- A Mysore
- B Delhi
- C Agra
- D Gwalior

**Answer: A**

**Question 43**

**Sri Aurobindo was born in the year**

- A 1772
- B 1822
- C 1872
- D 1922

**Answer: C**

**Question 44**

**Highest Civilian Honour received by A. P. J. Abdul Kalam is**

- A Padma Shri
- B Padma Bhushan

C Padma Vibhushan

D Bharat Ratna

Answer: D

## SSC CHSL Free Mock Test

Question 45

What will happen to the force between the two positive charges which are released after being held near each other?

A Force will increase

B Force will decrease

C Force will stay the same

D Force first increases to reach maximum before starting to decrease

Answer: B

Question 46

Which device is used to measure earthquakes?

A Endoscope

B Thermometer

C Sonograph

D Seismograph

Answer: D

Question 47

Which bill cannot originate in Rajya Sabha?

A Constitutional Amendment Bill

B Ordinary Bill

C Fundamental Bill

D Money Bill

Answer: D

## SSC CHSL Previous Papers (DOWNLOAD PDF)

Question 48

Who can initiate the process of removal of the President before the expiry of his term?

A Lok Sabha

B Supreme court

C Common man

D Member of parliament

Answer: A

**Question 49**

**Kobe Bryant is associated with which sport?**

A Lawn Tennis

B Basketball

C Formula One

D WWE

Answer: B

**Question 50**

**Who wrote the Panchatantra?**

A Vyasa

B Vishnu Sharma

C Valmiki

D Yajnavalkya

Answer: B

## SSC CGL Previous Papers (DOWNLOAD PDF)

### English

**Instructions**

For the following questions answer them individually

**Question 51**

**Select the word with the correct spelling.**

A lassoing

B psychik

C thacher

D squeezer

Answer: A

**Explanation:**

Only 'lassoing' is correctly spelt. psychik should be spelt as 'psychic', thacher should be spelt as 'thatcher', 'squeezer' should be spelt as 'squeezer'.

## SSC CGL Free Mock Test (Latest Pattern)

**Question 52**

In the following question, the sentence given with blank to be filled in with an appropriate word. Select the correct alternative out of the four and indicate it by selecting the appropriate option.

Rational thinkers are intellectually \_\_\_\_\_ than those who accept faith without questioning the age old practices.

- A cultured
- B sophisticated
- C superior
- D modern

**Answer: C**

**Question 53**

Select the synonym of ancient

- A topical
- B extant
- C archaic
- D fad

**Answer: C**

**Question 54**

Choose the antonym of analogue

- A correlate
- B cognate
- C dialogue
- D difference

**Answer: D**

**Explanation:**

'Analogue' means a person or a thing seen as comparable to another.

So out of the given options 'difference' must be the antonym of 'analogue'.

Hence, option D is the right choice.

## SSC CHSL Important Questions and Answers (Download PDF)

**Question 55**

In the following question, out of the four alternatives, select the alternative which best expresses the meaning of the idiom/phrase.

**A hot potato**

- A A war like situation which could have been easily avoided
- B A common eatery but favoured by celebrities
- C A controversial situation which is awkward to deal with

D A celebrity who keeps getting into some or the other controversy

Answer: C

**Question 56**

In the following question, some part of the sentence may have errors. Find out which part of the sentence has an error and select the appropriate option. If a sentence is free from error, select 'No Error'.

The shifting task is almost done,(A)/only the furnitures(B)/have to be delivered.(C)/No error(D)

A A

B B

C C

D D

Answer: B

**Question 57**

In the following question, out of the four alternatives, select the alternative which is the best substitute of the phrase.

A spot or a stain caused by a discolouring substance

A Hue

B Blot

C Tint

D Dye

Answer: B

## SSC CHSL Study Material

**Question 58**

In the following question, a sentence has been given in Direct/Indirect speech. Out of the four alternatives suggested, select the one which best express the same sentence in Indirect/Direct speech.

He said, "I bought an iPhone 6 yesterday."

A He said that he had bought an iPhone 6 the previous day.

B He said he bought an iPhone 6 the previous day.

C He said that he has bought an iPhone 6 yesterday.

D He exclaimed, an iPhone 6 has been bought by him yesterday.

Answer: A

**Question 59**

Select the antonym of amusement

A mischief

B naughty

C melancholy

D hilarity

Answer: C

Question 60

Rearrange the parts of the sentence in correct order.

This alone

P-should alert us to what

Q-is actually about

R-the demand for a Uniform Civil Code

A PRQ

B PQR

C QPR

D RPQ

Answer: A

SSC CHSL Free App

Question 61

Select the synonym of 'splayed'

A nimble

B jade

C frayed

D spread

Answer: D

Explanation:

'Splay' means to spread things apart. Hence, option D is the correct answer.

Question 62

Select the word with the correct spelling.

A humable

B customer

C breches

D boufant

Answer: B

Question 63

In the following question, some part of the sentence may have errors. Find out which part of the sentence has an error and select the appropriate option. If a sentence is free from error, select 'No Error'.

With little creativity and hard work(A)/the project could have been (B)/successfully completed.(C)/No error

A A

- B B
- C C
- D D

Answer: A

## Daily Free SSC Practice Set

### Question 64

Improve the bracketed part of the sentence.

Hardly had she finished her dinner (then) the doorbell rang.

- A than
- B when
- C while
- D no improvement

Answer: B

### Question 65

In the following question, out of the four alternatives, select the alternative which best expresses the meaning of the idiom/phrase.

**New kid on the block**

- A New rules which are bound to fail
- B A junior
- C A new social trend
- D A newcomer

Answer: D

### Question 66

Rearrange the parts of the sentence in correct order.

**Ironically, in spite of a decline in poverty,**

**P-the proportion of**

**Q-the population receiving welfare**

**R-benefits has risen sharply**

- A QRP
- B PQR
- C RPQ
- D QPR

Answer: B

**Free SSC Study Material (18,000 Solved Questions)**

**Question 67**

Improve the bracketed part of the sentence.

In the housing society where I live there is a nice house (to let out).

- A to let
- B for letting
- C to be let out
- D no improvement

**Answer: A**

**Question 68**

In the following question, out of the four alternatives, select the alternative which is the best substitute of the phrase.

A person who applies for a job or is nominated for election

- A Candidate
- B Elect
- C Volunteer
- D Nominator

**Answer: A**

**Question 69**

In the following question, a sentence has been given in Active/Passive voice. Out of four alternatives suggested, select the one which best expresses the same sentence in Passive/Active voice.

Mother filled dark filtered coffee in the cup.

- A The cup was filled with dark filtered coffee by mother.
- B Mother filled in the cup coffee which was dark and filtered.
- C The cup was being filled by mother with dark filtered coffee.
- D The filtered coffee which was dark was filled into the cup by mother.

**Answer: A**

**1500+ Very Important Free SSC Solved Questions**

**Question 70**

In the following question, the sentence given with blank to be filled in with an appropriate word. Select the correct alternative out of the four and indicate it by selecting the appropriate option.

Politicians requested both the warring communities to \_\_\_\_\_ restraint.

- A depict
- B enforce
- C show
- D exercise



**Answer: D**

**Instructions**

In the following passage some of the words have been left out. Read the passage carefully and select the correct answer for the given blank out of the four alternatives.

Sometimes the grand \_\_\_\_\_(1)\_\_\_\_\_ of the Left and the Right do not seem to have any relationship with the lived experiences of ordinary Indians. For the past two decades, the Left has tried to expand social welfare programmes \_\_\_\_\_(2)\_\_\_\_\_ the poor in the country by highlighting the growing \_\_\_\_\_(3)\_\_\_\_\_ between the rich and the poor. The Right, on the other hand, points to the growing \_\_\_\_\_(4)\_\_\_\_\_ of politically driven welfare policies and emphasises the need for economic growth to \_\_\_\_\_(5)\_\_\_\_\_ poverty and improve the lives of the poor.

**Question 71**

(1)

- A histories
- B plots
- C versions
- D narratives

**Answer: D**

**Explanation:**

'narratives' best fits the context of the blank as narrative means a story or a tale. The author wants to suggest that the story of neither the left nor the right seems to have any relationship with the ordinary citizens. Hence, option D is the correct choice.

**Question 72**

(2)

- A for
- B which
- C that
- D of

**Answer: A**

**Explanation:**

Any program is 'for the people'. Hence, 'for' is the best fit for the given blank. The other words do not make a logical or grammatical sense in the given blank.

**SSC Exam Update Videos & Free Study Material (YouTube Channel)**

**Question 73**

(3)

- A dissimilarities
- B discrepancies
- C disparities
- D disillusion

**Answer: C**

**Explanation:**

The author is trying to convey the growing inequalities between the rich and the poor. Hence, 'disparities' is the best fit for the given blank. It means 'inequalities'. Hence, option C is the correct answer.

**Question 74**

(4)

- A issue
- B matter
- C pain
- D burden

**Answer: D**

**Explanation:**

Growing 'issue' or growing 'matter' does not make sense in the given context. Among pain and burden, the latter is a better fit as the author is trying to highlight the negative implications of politically driven schemes. Hence, 'burden' is the best fit for the given blank.

**Question 75**

(5)

- A agitate
- B alleviate
- C aggravate
- D depress

**Answer: B**

**Explanation:**

The author is trying to highlight the need to solve the problems of the poor. Hence, 'alleviate' is the best fit for the given blank as to alleviate means to provide relief.

**Latest Job Updates on Telegram - Join here**

## Mathematics

**Instructions**

For the following questions answer them individually

**Question 76**

Daily ticket of a local train costs Rs 140 and Monthly Pass costs Rs 3276. If Mohan buys the Monthly Pass and travels for 30 days in a month then what amount does he save?

- A 18 percent
- B 16 percent
- C 15 percent
- D 22 percent

**Answer: D**

**Explanation:**

Train ticket cost for 1 day = Rs. 140

=> Cost for 30 days =  $30 \times 140 = \text{Rs. } 4200$

Cost of monthly pass = Rs. 3276

=> Money saved =  $4200 - 3276 = \text{Rs. } 924$

$\therefore$  Required % =  $\frac{924}{4200} \times 100$

=  $\frac{924}{42} = 22\%$

=> Ans - (D)

## Join SSC Daily Quiz Telegram Group

### Question 77

Segment AB is parallel to segment CD. AD intersects BC in E. If lengths of AE, BC and ED are 10 cm, 15 cm and 15 cm, what is the length of EC?

A 10 cm

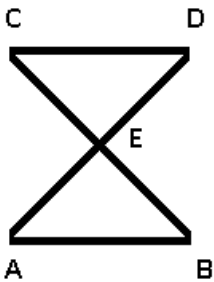
B 6 cm

C 5 cm

D 9 cm.

Answer: D

Explanation:



Given : AB is parallel to CD. AE = 10 cm , BC = 15 cm and ED = 15 cm

To find : EC = ?

Solution : Let  $EC = x$  cm

In  $\triangle BAE$  and  $\triangle CDE$

=>  $\angle ABE = \angle DCE$  (Alternate interior angles)

=>  $\angle BAE = \angle CDE$  (Alternate interior angles)

=>  $\angle AEB = \angle CED$  (Vertically opposite angles)

Thus,  $\triangle BAE \sim \triangle CDE$  (AAA criteria)

$\therefore \frac{AE}{DE} = \frac{EB}{EC}$

=>  $\frac{10}{15} = \frac{(15-x)}{x}$

=>  $\frac{(15-x)}{x} = \frac{2}{3}$

=>  $45 - 3x = 2x$

=>  $2x + 3x = 5x = 45$

=>  $x = \frac{45}{5} = 9$  cm

=> Ans - (D)

**Question 78**

A bank offers 5% compound interest per half year. A customer deposits Rs 8000 each on 1st January and 1st July of a year. At the end of the year, the amount he would have gained by way of interest is

- A Rs 2440
- B Rs 610
- C Rs 1220
- D Rs 305

**Answer:** C

**Explanation:**

The interest earned on 8000 from Jan to July will be  $8000 \times 5 \times \frac{1}{100}$  (Since rate of interest is 5% per 6 months)  
 $= 80 \times 5 = 400$

Hence, 8000 will amount to 8400. He adds another 8000 to this. So the net amount becomes  $8400 + 8000 = 16,400$ .

Now interest earned on this amount in a period of 6 months will be  $16400 \times 5 \times \frac{1}{100} = 820$

So the final amount will be  $16400 + 820 = 17220$

Total money he deposited =  $8000 + 8000 = 16000$

Hence, amount earned via interest =  $17220 - 16000 = 1220$

=> Ans - (C)

**Question 79**

If  $16qxy = (2x + y)^2 - (2x - y)^2$ , then what is the value of q?

- A 0.5
- B 0.25
- C 4
- D 2

**Answer:** A

**Explanation:**

Expression :  $16qxy = (2x + y)^2 - (2x - y)^2$

R.H.S. =  $(2x + y)^2 - (2x - y)^2$

$= (4x^2 + y^2 + 4xy) - (4x^2 + y^2 - 4xy)$

$= (4x^2 - 4x^2) + (y^2 - y^2) + (4xy + 4xy)$

$= 8xy$

L.H.S. =  $16qxy$

=>  $16q = 8$

=>  $q = \frac{8}{16} = 0.5$

=> Ans - (A)

**25 SSC CHSL Mocks for just Rs. 149**

**Question 80**

The greatest four digit number that is divisible by both 15 and 35 is

- A 9970
- B 9965
- C 9975
- D 9980

**Answer: C**

**Explanation:**

L.C.M. of 15 and 35 = 105

Now, the greatest 4 digit number = 9999

By dividing 9999 with 105,  $\Rightarrow 9999 = 105 \times 95 + 24$

Quotient = 95 and remainder = 2

Thus, the greatest 4 digit number that can be divided by 105(15 and 35) =  $9999 - 24 = 9975$

$\Rightarrow$  Ans - (C)

**Question 81**

Which of the following points lies on the line  $5x + 4y = 2$ ?

- A (2,3)
- B (-2,-3)
- C (-2,3)
- D (2,-3)

**Answer: C**

**Explanation:**

Equation :  $5x + 4y = 2$

(A) : (2,3)

$\Rightarrow 5(2) + 4(3) = 22 \neq 2$

(B) : (-2,-3)

$\Rightarrow 5(-2) + 4(-3) = -22 \neq 2$

(C) : (-2,3)

$\Rightarrow 5(-2) + 4(3) = 2$

(D) : (2,-3)

$\Rightarrow 5(2) + 4(-3) = -2 \neq 2$

$\Rightarrow$  Ans - (C)

**Question 82**

The total surface area of a hemisphere is 1848 sq cm, what is its radius? (Take  $\pi = 22/7$ )

- A 28 cms
- B 7 cms

C 21 cms

D 14 cms

Answer: D

Explanation:

Let radius of hemisphere =  $r$  cm

Total surface area of hemisphere =  $3\pi r^2 = 1848$

$$\Rightarrow r^2 = \frac{1848}{3\pi}$$

$$\Rightarrow r^2 = 616 \times \frac{7}{22}$$

$$\Rightarrow r^2 = 28 \times 7 = 196$$

$$\Rightarrow r = \sqrt{196} = 14 \text{ cm}$$

$\Rightarrow$  Ans - (D)

## SSC CHSL Free Mock Test

Question 83

Points P and Q lies on side AB and AC of triangle ABC respectively such that segment PQ is parallel to side BC. If the ratio of areas of triangle APQ and triangle ABC is 9:16, then what is the ratio of AP:PB?

A 3:4

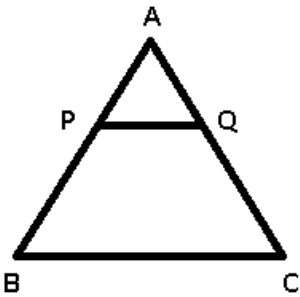
B 9:7

C 9:16

D 3:1

Answer: D

Explanation:



In  $\triangle APQ$  and  $\triangle ABC$

$\angle PAQ = \angle BAC$  (common)

$\angle APQ = \angle ABC$  (Alternate interior angles)

$\angle AQP = \angle ACB$  (Alternate interior angles)

$\Rightarrow \triangle APQ \sim \triangle ABC$

$\Rightarrow$  Ratio of Area of  $\triangle APQ$  : Area of  $\triangle ABC$  = Ratio of square of corresponding sides =  $(AP)^2 : (AB)^2$

$$\Rightarrow \frac{9}{16} = \frac{(AP)^2}{(AB)^2}$$

$$\Rightarrow \frac{AP}{AB} = \sqrt{\frac{9}{16}} = \frac{3}{4}$$

Also,  $PB = AB - AP$

$$\Rightarrow \frac{AP}{PB} = \frac{3}{4-3} = \frac{3}{1}$$

=> Ans - (D)

**Question 84**

Which of the following equations has the sum of its roots as 7?

**A**  $x^2 + 7x + 14 = 0$

**B**  $x^2 - 7x + 10 = 0$

**C**  $x^2 + 5x + 6 = 0$

**D**  $x^2 + 5x - 6 = 0$

**Answer: B**

**Explanation:**

In a quadratic equation of the form :  $ax^2 + bx + c = 0$ , the sum of the roots is given by =  $-\frac{b}{a}$   
 = Ratio of negative coefficient of  $x$  to coefficient of  $x^2$

In equation (B) :  $x^2 - 7x + 10 = 0$

=> Sum of roots =  $-\frac{(-7)}{1} = 7$

=> Ans - (B)

**Question 85**

$(\operatorname{cosec}A - \sin A)(\sec A - \cos A)(\tan A + \cot A)$  is equals to

**A** 2

**B** 0

**C** 1

**D** 1/2

**Answer: C**

**Explanation:**

Expression :  $(\operatorname{cosec}A - \sin A)(\sec A - \cos A)(\tan A + \cot A)$

$$= \left(\frac{1}{\sin A} - \sin A\right) \left(\frac{1}{\cos A} - \cos A\right) \left(\frac{\sin A}{\cos A} + \frac{\cos A}{\sin A}\right)$$

$$= \left(\frac{1 - \sin^2 A}{\sin A}\right) \left(\frac{1 - \cos^2 A}{\cos A}\right) \left(\frac{\sin^2 A + \cos^2 A}{\sin A \cos A}\right)$$

Using,  $(\sin^2 A + \cos^2 A = 1)$

$$= \frac{\cos^2 A}{\sin A} \times \frac{\sin^2 A}{\cos A} \times \frac{1}{\sin A \cos A}$$

$$= \frac{\sin^2 A \cos^2 A}{\sin^2 A \cos^2 A} = 1$$

=> Ans - (C)

**SSC CHSL Previous Papers (DOWNLOAD PDF)**

**Question 86**

$x$  and  $y$  are two numbers such that their mean proportion is 6 and third proportion is 48. What is the value of  $x$  and  $y$ ?

**A** 3 and 6

B 6 and 12

C 6 and 6

D 3 and 12

**Answer: D**

**Explanation:**

Three numbers  $a, b, c$  are in proportion iff  $b^2 = ac$  where  $b$  is the mean proportion and  $c$  is the third proportion

Mean proportion of two numbers  $x$  and  $y = 6$

$$\Rightarrow xy = (6)^2 = 36 \text{ -----(i)}$$

Third proportion = 48

$$\Rightarrow y^2 = x \times 48 \text{ -----(ii)}$$

Substituting value of  $x$  from equation(i) in equation(ii), we get :

$$\Rightarrow y^2 = \frac{36}{y} \times 48$$

$$\Rightarrow y^3 = (2)^3 \times (6)^3 = (12)^3$$

$$\Rightarrow y = (12)^{\frac{3}{3}} = 12$$

$$\text{Substituting it in equation(i), } \Rightarrow x = \frac{36}{12} = 3$$

$\Rightarrow$  Ans - (D)

**Question 87**

The mean of marks secured by 55 students in division-A of class X is 55, 45 students of division-B is 51 and that of 40 students of division-C is 49. What is the mean of marks of the students of three divisions of Class X?

A 51.3

B 50.6

C 52

D 53.4

**Answer: C**

**Explanation:**

Total marks secured by 55 students in division A =  $55 \times 55 = 3025$

Total marks secured by 45 students in division B =  $45 \times 51 = 2295$

Total marks secured by 40 students in division C =  $40 \times 49 = 1960$

$$\Rightarrow \text{Mean of marks of the students of three divisions of Class X} = \frac{(3025+2295+1960)}{(55+45+40)}$$

$$= \frac{7280}{140} = 52$$

$\Rightarrow$  Ans - (C)

**Question 88**

What is the value of  $\cos^2(A/2)$ ?

A  $(1 - \cos A)/2$

B  $(1 + \cos A)/2$

C  $(1 + \sin A)/2$



D  $(1 - \sin A)/2$

Answer: B

Explanation:

Using double angle formula, we know that  $\cos(2\theta) = \cos^2\theta - \sin^2\theta$

$$\Rightarrow \cos(2\theta) = \cos^2\theta - (1 - \cos^2\theta)$$

$$\Rightarrow \cos(2\theta) = 2\cos^2\theta - 1$$

Replacing  $\theta$  by  $\frac{A}{2}$ , we get :

$$\Rightarrow \cos A = 2\cos^2\left(\frac{A}{2}\right) - 1$$

$$\Rightarrow \cos A + 1 = 2\cos^2\left(\frac{A}{2}\right)$$

$$\Rightarrow \frac{(\cos A + 1)}{2} = \cos^2\left(\frac{A}{2}\right)$$

$\Rightarrow$  Ans - (B)

## SSC CGL Previous Papers (DOWNLOAD PDF)

Question 89

One diagonal of a rhombus is half the other. If the length of the side of the rhombus is 10 cm, what is the area of the rhombus?

A  $75\sqrt{3}$  sq cm

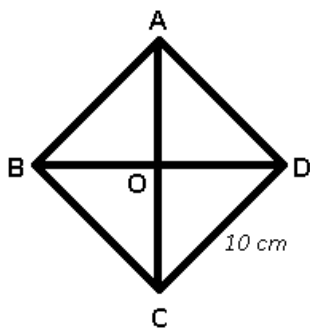
B  $25\sqrt{3}$  sq cm

C 80 sq cm

D 160 sq cm

Answer: C

Explanation:



AC and BD are diagonals of the rhombus ABCD with side = 10 cm

One diagonal of a rhombus is half the other, let AC =  $4x$  cm

$$\Rightarrow BD = 2x \text{ cm}$$

Diagonal of a rhombus perpendicularly bisect each other.

$$\Rightarrow OD = x \text{ cm and } OC = 2x \text{ cm}$$

$$\text{In } \triangle OCD, \Rightarrow (OC)^2 + (OD)^2 = (CD)^2$$

$$\Rightarrow (2x)^2 + (x)^2 = (10)^2$$

$$\Rightarrow 4x^2 + x^2 = 100$$

$$\Rightarrow x^2 = \frac{100}{5} = 20$$

$$\therefore \text{Area of rhombus} = \frac{1}{2} \times \text{Product of diagonals}$$

$$= \frac{1}{2} \times 4x \times 2x$$

$$= 4x^2 = 4 \times 20 = 80\text{cm}^2$$

=> Ans - (C)

#### Question 90

P and Q can finish a work in 24 and 12 days respectively. In how many days can they complete 50% of the work if they work together?

A 8 days

B 2 days

C 4 days

D 16 days

Answer: C

#### Explanation:

Let total work to be done = 24 units

P can complete the work alone in 24 days

$$\Rightarrow \text{P's efficiency} = \frac{24}{24} = 1 \text{ unit/day}$$

Q can complete the work alone in 12 days

$$\Rightarrow \text{Q's efficiency} = \frac{24}{12} = 2 \text{ units/day}$$

(P + Q)'s 1 day's work = 2 + 1 = 3 units/day

$$\Rightarrow 50\% \text{ of the work} = \frac{50}{100} \times 24 = 12 \text{ units}$$

\(\therefore\) Time taken by them together to complete 50% of the work =  $\frac{12}{3} = 4$  days

=> Ans - (C)

#### Question 91

A rice trader buys 16 quintals of rice for Rs 1,280. 18% rice is lost in transportation. At what rate should he sell to earn 23% profit?

A Rs 53.33 per quintal

B Rs 98.4 per quintal

C Rs 122.5 per quintal

D Rs 120 per quintal

Answer: D

#### Explanation:

Cost price = Rs. 1280 for 16 quintals

$$\text{Quantity of rice with the trader after transportation lost} = \frac{100-18}{100} \times 16 = \frac{82}{25} \times 4$$
$$= 13.12 \text{ quintals}$$

$$\text{To have 23\% profit, total selling price of the trader should be} = \frac{123}{100} \times 1280$$
$$= \text{Rs. } 1574.4$$

$$\therefore \text{Selling price per quintal} = \frac{1574.4}{13.12} = \text{Rs. } 120$$

=> Ans - (D)

**Question 92**

To travel 780 km, an Express train takes 8 hours more than Rajdhani. If however, the speed of the Express train is doubled, it takes 6 hours less than Rajdhani. The speed (in km/hr) of Rajdhani is

- A 39 km/hr
- B 55.7 km/hr
- C 22.3 km/hr
- D 72.4 km/hr

**Answer: A**

**Explanation:**

Let speed of Rajdhani train =  $x$  km/hr and Express train =  $y$  km/hr

Using, time = distance/speed

$$\text{Acc. to ques, } \Rightarrow \frac{780}{y} - \frac{780}{x} = 8$$

$$\Rightarrow \frac{1}{y} - \frac{1}{x} = \frac{8}{780} = \frac{2}{195} \text{-----(i)}$$

If speed of express train is doubled =  $2y$  km/hr

$$\Rightarrow \frac{780}{x} - \frac{780}{2y} = 6$$

$$\Rightarrow \frac{1}{x} - \frac{1}{2y} = \frac{6}{780} = \frac{1}{130} \text{-----(ii)}$$

Adding equations (i) and (ii), we get :

$$\Rightarrow \frac{1}{y} - \frac{1}{2y} = \frac{2}{195} + \frac{1}{130}$$

$$\Rightarrow \frac{1}{2y} = \frac{4+3}{390} = \frac{7}{390}$$

$$\Rightarrow y = \frac{195}{7} \text{ km/hr}$$

$$\therefore \text{Speed of Rajdhani} = \frac{1}{x} = \frac{7}{195} - \frac{2}{195}$$

$$\Rightarrow \frac{1}{x} = \frac{5}{195} = \frac{1}{39}$$

$$\Rightarrow x = 39 \text{ km/hr}$$

$\Rightarrow$  Ans - (A)

**Question 93**

$\cot -11\pi/6$  is equals to

- A  $-\sqrt{3}$
- B  $\frac{1}{\sqrt{3}}$
- C  $-\frac{1}{\sqrt{3}}$
- D  $\sqrt{3}$

**Answer: D**

**Explanation:**

Expression :  $\cot -11\pi/6$

$$\therefore \cot(-x) = -\cot(x)$$

$$\begin{aligned}
 &= -\cot\left(\frac{11\pi}{6}\right) \\
 &= -\cot\left(2\pi - \frac{\pi}{6}\right) \\
 &= -[-\cot\left(\frac{\pi}{6}\right)] = \cot\left(\frac{\pi}{6}\right) \\
 &= \sqrt{3}
 \end{aligned}$$

=> Ans - (D)

**Question 94**

If  $5x + 2 > 3x + 1$  and  $4(x - 4) - 2 \leq 3x - 1$ , then  $x$  can take which of the following values?

- A 16
- B 18
- C -6
- D -16

**Answer: A**

**Explanation:**

Expression 1 :  $5x + 2 > 3x + 1$

$$\Rightarrow 5x - 3x > 1 - 2$$

$$\Rightarrow 2x > -1$$

$$\Rightarrow x > \frac{-1}{2} \text{ -----(i)}$$

Expression 2 :  $4(x - 4) - 2 \leq 3x - 1$

$$\Rightarrow 4x - 16 - 2 \leq 3x - 1$$

$$\Rightarrow 4x - 3x \leq -1 + 18$$

$$\Rightarrow x \leq 17 \text{ -----(ii)}$$

Combining inequalities (i) and (ii), we get :  $\frac{-1}{2} < x \leq 17$

The only value that  $x$  can take among the options = 16

=> Ans - (A)

## SSC CHSL Important Questions and Answers (Download PDF)

**Question 95**

The value of  $x$  for which the expressions  $5x + 3$  and  $7x - 3$  become equal is

- A 3
- B -1
- C -4
- D 2

**Answer: A**

**Explanation:**

Expressions :  $5x + 3$  and  $7x - 3$

$$\Rightarrow 5x + 3 = 7x - 3$$

$$\Rightarrow 7x - 5x = 3 + 3$$

$$\Rightarrow 2x = 6$$

$$\Rightarrow x = \frac{6}{2} = 3$$

$\Rightarrow$  Ans - (A)

#### Question 96

A student multiplied a number by  $\frac{5}{8}$  instead of  $\frac{8}{5}$ . What is the percentage error in the calculation?

A 60.94 percent

B 156 percent

C 30.47 percent

D 78 percent

**Answer:** A

#### Explanation:

Let the number be 40

When the student multiplied it by  $\frac{5}{8}$ ,  $\Rightarrow$  original result =  $\frac{5}{8} \times 40 = 25$

When the student multiply it by  $\frac{8}{5}$ ,  $\Rightarrow$  New result =  $\frac{8}{5} \times 40 = 64$

$\Rightarrow$  Percentage error in calculation =  $\frac{(64-25)}{64} \times 100$

$$= \frac{3900}{64} = 60.937 \approx 60.94\%$$

$\Rightarrow$  Ans - (A)

#### Question 97

Refer the below data table and answer the following Question.

	Quantity of Stock	Average Cost (Rs)
Mobile Phones	59	15000
Cameras	72	16000
TVs	77	36000
Refrigerators	100	28000
ACs	98	23000

What is the value of the total stock (in lakh rupees)?

A 986.3

B 118

C 98.63

D 406

**Answer:** C

#### Explanation:

Total cost of mobiles =  $59 \times 15000 = \text{Rs. } 8,85,000$

Total cost of Cameras =  $72 \times 16000 = \text{Rs. } 11,52,000$

Total cost of TVs =  $77 \times 36000 = \text{Rs. } 27,72,000$

Total cost of Refrigerator =  $100 \times 28000 = \text{Rs. } 28,00,000$

Total cost of AC =  $98 \times 23000 = \text{Rs. } 22,54,000$

$\therefore$  Total cost =  $8,85,000 + 11,52,000 + 27,72,000 + 28,00,000 + 22,54,000 = \text{Rs. } 98,63,000$

Total cost in lakhs = Rs 98.63 lakhs

=> Ans - (C)

## SSC CHSL Study Material

### Question 98

Refer the below data table and answer the following Question.

Year	Company's % Profit
2011	1.1
2012	1.1
2013	0.7
2014	0.7
2015	0.7

If the imports in 2012 was Rs. 900 crores and the total exports in the years 2012 and 2013 together was Rs. 2800 crores, then the imports in 2013 was?

- A 1387
- B 1982
- C 818
- D 2831

Answer: A

#### Explanation:

Imports in 2012 = Rs. 900 crores

Let Exports in 2012 = Rs.  $y$  crores

Ratio of imports and exports in 2012 = 1.1

$$\Rightarrow \frac{900}{y} = 1.1$$

$$\Rightarrow y = \frac{900}{1.1} = 818.18$$

Total exports In the years 2012 and 2013 together = Rs. 2800 crores

=> Exports in 2013 = Rs. (2800 - 818.18) crores = Rs. 1981.82 crores

Let imports in 2013 = Rs.  $x$  crores

Ratio of imports and exports in 2013 =  $\frac{x}{1981.82} = 0.7$

$$\Rightarrow x = 1981.82 \times 0.7 = 1387.274 \approx 1387$$

∴ Imports in 2013 was Rs. 1387 crores

=> Ans - (A)

Question 99

Refer the below data table and answer the following Question.

Measured on Birthday	Height of the child (in cms)
4	100
5	105
6	115
7	120
8	125
9	130
10	135
11	145
12	150
13	155
14	160
15	170
16	180

What was the increase in the height of the child from the 9th Birthday to the 15th Birthday?

- A 45 cms
- B 40 cms
- C 35 cms
- D 50 cms

Answer: B

**Explanation:**

Height on 9th birthday = 130 cm

Height on 15th birthday = 170 cm

Increase in height =  $170 - 130 = 40$  cm

=> Ans - (B)

Question 100

Refer the below data table and answer the following Question.

Deep Sleep	20
Dreaming	20
Light Sleep	5
Extremely Light Sleep	15
Awake	40

Between 10pm to 6am, a fitness band records the following data. How long was the user in Deep Sleep or in Extremely light sleep ?

- A 2.3 hours
- B 2.8 hours
- C 1.3 hours
- D 3.3 hours

Answer: B

**Explanation:**

Total time between 10 pm to 6 am = 8 hours

% time spent in deep sleep and Extremely light sleep =  $20 + 15 = 35\%$

=> Time spent in deep and extremely light sleep =  $\frac{35}{100} \times 8$

=  $\frac{7 \times 2}{5} = 2.8$  hours

=> Ans - (B)

**SSC CHSL Free App**

**25 SSC CHSL Mocks for just Rs. 149**

**SSC CHSL Free Mock Test**

**SSC CHSL Previous Papers (DOWNLOAD PDF)**

**SSC CGL Previous Papers (DOWNLOAD PDF)**

**SSC CGL Free Mock Test (Latest Pattern)**

**SSC CHSL Important Questions and Answers (Download PDF)**

**SSC CHSL Study Material**

**SSC CHSL Free App**

**Daily Free SSC Practice Set**

**Free SSC Study Material (18,000 Solved Questions)**

**1500+ Very Important Free SSC Solved Questions**

**SSC Exam Update Videos & Free Study Material (YouTube Channel)**

**Latest Job Updates on Telegram - Join here**

**Join SSC Daily Quiz Telegram Group**