



SSC CHSL 1 Feb 2017 Morning Shift

All rights reserved. No part of this publication may be reproduced, distributed, or transmitted in any form or by any means, electronic, mechanical, photocopying, recording or otherwise, or stored in any retrieval system of any nature without the permission of cracku.in, application for which shall be made to support@cracku.in

Reasoning

Instructions

For the following questions answer them individually

Question 1

Select the related word/letters/number from the given alternatives. Farmer : Plough:: Painter: ?

- A Brush
- B Harrow
- C Axe
- D Knife

Answer: A

Explanation:

Plough is a large farming implement with one or more blades fixed in a frame used by farmers to plant seeds, similarly a painter uses brush to paint.

=> Ans - (A)

25 SSC CHSL Mocks for just Rs. 149

Question 2

Select the related word/letters/number from the given alternatives. DB: IC:: YE: ?

- A FJ
- B DF
- C TH
- D WL

Answer: B

Explanation:

Expression = DB: IC:: YE: ?

The pattern followed is :

D	B
(+5)	(+1)
I	C

Similarly, YE : DF

Y	E
(+5)	(+1)
D	F

=> Ans - (B)

Question 3

Select the related word/letters/number from the given alternatives. AEG: GKM :: MQS : ?

- A SWY
- B SWZ

C ZWQ

D SWB

Answer: A

Explanation:

Expression = AEG: GKM :: MQS : ?

The pattern followed is .

A	E	G
(+6)	(+6)	(+6)
G	K	M

Similarly, MQS : SWY

M	Q	S
(+6)	(+6)	(+6)
S	W	Y

=> Ans - (A)

Question 4

Select the related word/letters/number from the given alternatives.

17: 71 :: 35: ?

A 69

B 56

C 60

D 53

Answer: D

Explanation:

Expression = 17: 71 :: 35: ?

The pattern followed is that the second number is the reverse of the first number.

Eg :- 71 is reverse of 17

Similarly, reverse of 35 : **53**

=> Ans - (D)

SSC CHSL Free Mock Test

Question 5

Select the odd word/letters/number/number pair from the given alternatives.

A Joule

B Ohm

C Watt

D Magnetic Field

Answer: D

Explanation:

Except magnetic field, all are S.I. units, hence magnetic field is the odd one out.

=> Ans - (D)

Question 6

Select the odd word/letters/number/number pair from the given alternatives.

A BGF

B FDH

C BAE

D CDE

Answer: D

Explanation:

Only the letters in the last option are consecutive alphabets according to the English alphabetical order, hence CDE is the odd one.

=> Ans - (D)

Question 7

Select the odd word/letters/number/number pair from the given alternatives.

A 2197

B 3375

C 4099

D 2744

Answer: C

Explanation:

$2197 = (13)^3$, $3375 = (15)^3$ and $2744 = (14)^3$, but 4099 is not a perfect cube, hence it is the odd one out.

=> Ans - (C)

SSC CHSL Previous Papers (DOWNLOAD PDF)

Question 8

Select the odd word/letters/number/number pair from the given alternatives.

A 794

B 576

C 668

D 992

Answer: B

Explanation:

$576 = (24)^2$, all other numbers are not perfect square numbers, hence 576 is the odd one out.

=> Ans - (B)

Question 9

A series is given with one term missing. Select the correct alternative from the given ones that will complete the series. Padma Shri, Padma Bhushan, Padma Vibhushan, ?

- A Bharat Ratna
- B Ashok Chakra
- C Sahitya Akademi Award
- D Arjuna Award

Answer: A

Explanation:

Padma shri, Padma Bhushan, Padma Vibhushan, Bharat Ratna are Civilian awards.

=> Ans - (A)

Question 10

A series is given with one term missing. Select the correct alternative from the given ones that will complete the series. CAE, FDH, IGK, ?

- A L J N
- B O M Q
- C K L M
- D P O N

Answer: A

Explanation:

Expression : CAE, FDH, IGK, ?

The pattern followed in each letters of the terms is :

1st letter : C (+3 letters) = F (+3 letters) = I (+3 letters) = L

2nd letter : A (+3 letters) = D (+3 letters) = G (+3 letters) = J

3rd letter : E (+3 letters) = H (+3 letters) = K (+3 letters) = N

Thus, missing term = **L J N**

=> Ans - (A)

SSC CGL Previous Papers (DOWNLOAD PDF)

Question 11

A series is given with one term missing. Select the correct alternative from the given ones that will complete the series. AY, CW, EU, ?

- A GS
- B HS
- C GR
- D HR

Answer: A

Explanation:

Expression : AY, CW, EU, ?

The pattern followed in each letter of the terms is :

1st letter : A (+2 letters) = C (+2 letters) = E (+2 letters) = G

2nd letter : Y (-2 letters) = W (-2 letters) = U (-2 letters) = S

Thus, missing term = **GS**

=> Ans - (A)

Question 12

A series is given with one term missing. Select the correct alternative from the given ones that will complete the series.
122, 197, 290, ?

A 399

B 400

C 401

D 402

Answer: C

Explanation:

The pattern followed is :

$$(11)^2 + 1 = 122$$

$$(14)^2 + 1 = 197$$

$$(17)^2 + 1 = 290$$

$$(20)^2 + 1 = 401$$

=> Ans - (C)

Question 13

In the following question, two statements are given each followed by two conclusions I and II. You have to consider the statements to be true even if they seem to be at variance from commonly known facts. You have to decide which of the given conclusions, if any, follows from the given statements.

Statement:

(I) India's GDP continues to grow at one of the reasonable rates but job creation is not picking up the similar pace.

(II) Every year over 20 million young Indians join the workforce.

Conclusions:

(I) Population increase is more than the job creation rate.

(II) Supply basket is less and the demand basket for jobs is very high.

A Only conclusion II follows

B Conclusion I and II both follow

C Neither I nor II follow

D Only conclusion I follows

Answer: B

Explanation:

Conclusion one which states that rate of increase of India's population is more than the job creation rate definitely follows the first statement.

Also, second conclusion is also similar to the first one, hence it also follows, since India's GDP continues to grow at one of the reasonable rates but job creation is not picking up the similar pace.

Thus, conclusion I and II both follow.

=> Ans - (B)

Question 14

Five girls are sitting facing towards the north. Rekha is between Shalini and Neetu. Pooja is to the immediate right of Neetu and Shalini is to the immediate right of Neha. Who is sitting in the middle?

- A Shalini
- B Neetu
- C Rekha
- D Pooja

Answer: C

Explanation:

Rekha is between Shalini and Neetu. Pooja is to the immediate right of Neetu

=> Rekha is sitting to the immediate left of Neetu, and Shalini is sitting second to the left of Neetu.

Also, Shalini is to the immediate right of Neha.

Arrangement :

Neha	Shalini	Rekha	Neetu	Pooja
------	---------	-------	-------	-------

∴ **Rekha** is sitting in the middle.

=> Ans - (C)

Question 15

Arrange the given words in the sequence in which they occur in the dictionary.

- i. nature
- ii. nest
- iii. numeric
- iv. news

- A iii, i, ii, iv
- B iv, ii, iii, i
- C i, ii, iv, iii
- D i, ii, iii, iv

Answer: C

Explanation:

As per the order of dictionary :

= nature -> nest -> news -> numeric

≡ i, ii, iv, iii

=> Ans - (C)

Question 16

In a certain code language, "TRAIN" is written as "NIART". How is "SCOOTER" written in that code language?

- A RETOCS
- B RETOCSO
- C RETSCOO

D SCOOTER

Answer: A

Explanation:

"TRAIN" is written as "NIART"

The pattern followed is that the word is inversed, i.e. first letter comes at the end, second at second last and so on.

Similarly, for SCOOTER : **RETOOCS**

=> Ans - (A)

SSC CHSL Important Questions and Answers (Download PDF)

Question 17

If "+" means "minus", "x" means "divided by", "÷" means "plus" and "-" means "multiplied by", then $38 \times 2 - 6 + 19 \div 35 = ?$

A 130

B 140

C 135

D 145

Answer: A

Explanation:

Expression : $38 \times 2 - 6 + 19 \div 35 = ?$

$\equiv 38 \div 2 \times 6 - 19 + 35$

$= (38 \times 3) + 16$

$= 114 + 16 = 130$

=> Ans - (A)

Question 18

Which of the following interchanges in signs and numbers will make the given equation correct?

$8 \times 9 + 2 = 74$

A x and =, 2 and 9

B x and +, 8 and 2

C + and x, 8 and 9

D + and =, 74 and 2

Answer: B

Explanation:

Expression : $8 \times 9 + 2 = 74$

(A) : x and =, 2 and 9

$\equiv 8 = 2 + 9 \times 74$

R.H.S. = $666 + 2 = 668 \neq$ L.H.S.

(B) : x and +, 8 and 2

$\equiv 2 + 9 \times 8 = 74$

L.H.S. = $2 + 72 = 74 =$ R.H.S.

=> Ans - (B)

Question 19

In the following question, which one set of letters when sequentially placed at the gaps in the given letter series shall complete it?
a_b_a_c_a_bc

- A bccbb
- B bcbca
- C cabca
- D acbcb

Answer: A

Explanation:

The pattern followed is that the terms 'abbc' and 'acbb' are alternatively repeated.

= abbc acbb abbc

=> Ans - (A)

SSC CHSL Study Material

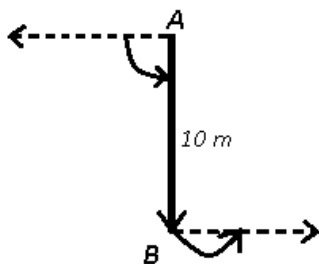
Question 20

A man is facing west and he turns anti-clockwise by 90 degrees and moves 10m straight, then he again turns 90 degrees anti-clockwise. Which direction is the man facing now?

- A North
- B West
- C South
- D East

Answer: D

Explanation:



The man is initially facing west, then he turns anti-clockwise by 90 degrees and moves 10 m straight towards south to reach point B, then he again turns 90 degrees anti-clockwise.

Thus, he is facing east at the end.

=> Ans - (D)

Question 21

A word is represented by only one set of numbers as given in any one of the alternatives. The sets of numbers given in the alternatives are represented by two classes of alphabets as in two matrices given below. The columns and rows of Matrix-I are numbered from 0 to 4 and that of Matrix-II are numbered from 5 to 9. A letter from these matrices can be represented first by its row and next by its column, e.g., 'P' can be represented by 95, 86 etc. and 'T' can be represented by 85, 95 etc. Similarly, you have to identify the set for the word 'ALIKE'

Matrix - I

	0	1	2	3	4
0	M	K	P	P	P
1	L	M	K	Q	N
2	Y	L	M	K	N
3	E	Y	L	M	K
4	B	B	Y	L	N

Matrix - II

	5	6	7	8	9
5	I	A	O	O	J
6	C	I	A	S	J
7	E	D	I	A	H
8	T	E	F	I	A
9	T	S	E	G	H

- A 56, 10, 55, 31, 97
- B 67, 21, 66, 96, 86
- C 78, 32, 77, 12, 86
- D 89, 43, 76, 01, 30

Answer: C

Explanation:

- (A) : 56, 10, 55, 31, 97 = ALIYE
- (B) : 67, 21, 66, 96, 86 = ALISE
- (C) : 78, 32, 77, 12, 86 = **ALIKE**
- (D) : 89, 43, 76, 01, 30 = ALDKE

=> Ans - (C)

Question 22

Pointing towards a lady in a photograph, a girl says, "Vidit's grandmother is the mother-in-law of this lady". How is the lady in the photograph related to Vidit?

- A Mother
- B Sister
- C Aunt
- D Cannot be determined

Answer: D

Explanation:

Let 'X' is Vidit's grandmother, now 'X' is also the mother-in-law of the given lady.

Thus, the lady is either Vidit's mother or his aunt.

=> Relation cannot be determined.

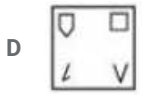
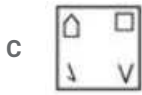
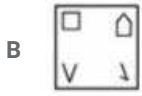
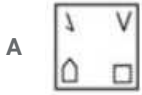
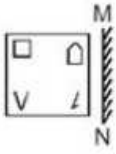
=> Ans - (D)



SSC CHSL Free App

Question 23

if a mirror is placed on the line MN, then which of the answer figures is the image of the given figure?



Answer: C

Explanation:

A vertical mirror is placed, so the object on the left will appear right in reverse position and vice-versa.

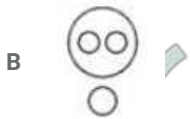
So the position of top two figures in the middle will be swapped and bottom two will also be swapped, thus the first two options will be eliminated.

Also, in the question figure, the shape of the figures will be reversed, hence third option is the right image.

=> Ans - (C)

Question 24

Identify the diagram that best represents the relationship among the given classes. Football, Volleyball, Outdoor Games, Carrom.



Answer: B

Explanation:

Football and Volleyball are both outdoor games, but they are completely different, and carrom is an indoor game.

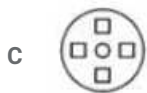
Thus, the venn diagram that best describes above relationship is :



=> Ans - (B)

Question 25

A piece of paper is folded and punched as shown below in the question figures. From the given answer figures, indicate how it will appear when opened.



Answer: A

Explanation:

When the paper is unfolded to the right, a rhombus will appear at the centre and the cut part on the left will appear similarly on the right.

When the paper is unfolded again to the bottom, the bottom part will be similar to the top part as shown below



Hence, the correct answer is Option A

Daily Free SSC Practice Set

General Awareness

Instructions

For the following questions answer them individually

Question 26

Chhatrapati Shivaji Terminus station was designed by

A Frederick William Stevens

B Santiago Calatrava

C Fazlur Rahman Khan

D Frei Otto

Answer: A

Free SSC Study Material (18,000 Solved Questions)

Question 27

Who won Nobel prize for Physics in 2015?

- A Hiroshi Amano
- B Takaaki Kajita
- C Isamu Akasaki
- D Makoto Kobayashi

Answer: B

Question 28

Kidney stones are composed of .

- A Calcium Oxalate
- B Sodium Chloride
- C Magnesium Nitrate
- D Calcium Bicarbonate

Answer: A

Question 29

Which of the following is not true about Angiosperms?

- A Dominant phase is gametophytes
- B Vascular bundles are present
- C Spores are heterospores
- D Seeds are covered

Answer: A

1500+ Very Important Free SSC Solved Questions

Question 30

All of the following are excretory (waste) products of animals, except

- A Uric Acid
- B Ammonia
- C Carbohydrates
- D Urea

Answer: C

Question 31

RNA is a polymeric molecule. What does RNA stand for?

- A Rado Nuclear Acid
- B Ribo Nucleic Acid
- C Rhino Nuclear Acid
- D Resto Nucleus Acid

Answer: B

Question 32

The common name of dichlorodifluoromethane is .

- A galena
- B Freon
- C gypsum
- D borax

Answer: B

SSC Exam Update Videos & Free Study Material (YouTube Channel)

Question 33

_____ performs tasks such as inserting, updating, or deleting data occurrences.

- A Data definition language
- B Data manipulation language
- C Query language
- D OQL

Answer: B

Question 34

The Razmnama is a Persian translation of the .

- A Mahabharata
- B Ramayana
- C Vedas
- D Upanishads

Answer: A

Question 35

If demand curve for house cleaning services is $D = 45000 - 21P$ and supply curve is $S = 15000 + 9P$, find the equilibrium Quantity?

- A 12000 units
- B 6000 units
- C 24000 units
- D 30000 units

Answer: C

Latest Job Updates on Telegram - Join here

Question 36

Goods whose demand is proportional to price are called

- A inferior goods
- B Veblen goods
- C normal goods
- D exclusive goods

Answer: B

Question 37

Similipal Tiger Reserve is in which state?

- A Maharashtra
- B Andhra Pradesh
- C Chhattisgarh
- D Odisha

Answer: D

Question 38

Which of the following is a greenhouse gas or a gas which can deplete the ozone layer?

- A N₂O
- B AsH₃
- C N₂
- D C₅H₁₂

Answer: A

Join SSC Daily Quiz Telegram Group

Question 39

Manohar Parrikar is India's .

- A Railway Minister
- B Finance Minister
- C HRD Minister
- D Defence Minister

Answer: D

Question 40

What is the capital of Finland?

- A Tashkent
- B Helsinki
- C Bern
- D Dublin

Answer: B

Question 41

Which city is located on the banks of the river Mula-Mutha?

- A Surat
- B Ahmedabad
- C Nagpur
- D Pune

Answer: D

25 SSC CHSL Mocks for just Rs. 149

Question 42

Ajatashatru was the son of whom?

- A Brahmadata
- B Bindusara
- C Bimbisara
- D Chetaka

Answer: C

Question 43

Chhatrapati Sambhaji (1680-1688 AD) was the ruler of which dynasty?

- A Maratha
- B Nanda

C Haryana

D Maurya

Answer: A

Question 44

Who Invented the computer mouse?

A Gene Dolgoff

B Brendan Eich

C Douglas Engelbart

D Federico Faggin

Answer: C

SSC CHSL Free Mock Test

Question 45

Which law states that internal energy is a function of state and the increase in internal energy is equal to the sum of the heat supplied to system and work done by the system?

A First law of thermodynamics

B Hooke's Law

C The coulomb's law

D Faraday's Law

Answer: A

Question 46

What is the direction of torque?

A Perpendicular to the direction of applied force

B Same as the direction of applied force

C Opposite to the direction of applied force

D Parallel to the radius

Answer: A

Question 47

Article 27 of the Indian Constitution "Freedom as to payment of taxes for promotion of any particular religion" under which part of the constitution?

A the Union Government

B the State Government

C the directive principles of state policy

D the fundamental rights of the Indian Citizen

Answer: D

SSC CHSL Previous Papers (DOWNLOAD PDF)

Question 48

Article 31C of the Indian Constitution "Saving of laws giving effect to certain directive principles" deals with?

- A the fundamental rights of the Indian Citizen
- B the State Government
- C the Union Government
- D the directive principles of state policy

Answer: A

Question 49

Who among the following has not scored a double hundred in an ODI?

- A Virender Sehwag
- B Sachin Tendulkar
- C Brian Lara
- D Rohit Sharma

Answer: C

Question 50

Who is the author of the book '7 Secrets of Shiva'?

- A Sudeep Nagarkar
- B Devdutt Pattanaik
- C R. K. Narayan
- D Aravind Adiga

Answer: B

SSC CGL Previous Papers (DOWNLOAD PDF)

Mathematics

Instructions

For the following questions answer them individually

Question 51

If $7A = 5B = 2C$; find $A : B : C$.

- A 35:14:10

- B 14:10:35
C 2:5:7
D 10:14:35

Answer: D

Explanation:

$$\text{Let } 7A = 5B = 2C = k$$

$$\Rightarrow A = \frac{k}{7}, B = \frac{k}{5}, C = \frac{k}{2}$$

$$\Rightarrow \text{Ratio of } A : B : C = \frac{k}{7} : \frac{k}{5} : \frac{k}{2}$$

$$= \frac{1}{7} : \frac{1}{5} : \frac{1}{2}$$

L.C.M. of 2,5 and 7 = 70, thus multiplying by 70, we get :

$$= \frac{70}{7} : \frac{70}{5} : \frac{70}{2}$$

$$= 10 : 14 : 35$$

\Rightarrow Ans - (D)

SSC CGL Free Mock Test (Latest Pattern)

Question 52

Which of the following numbers is not a prime number?

- A 731
B 227
C 347
D 461

Answer: A

Explanation:

Prime Factorization of 731 = 17×43

For all the remaining numbers, the only factors are 1 and the number themselves.

Thus, only 731 is not a prime number.

\Rightarrow Ans - (A)

Question 53

A factory buys 7 machines. 2 Machine A, 2 Machine B and rest Machine C. Prices of the machines are Rs 95000, Rs 75000 and Rs 43000 respectively. Calculate the average cost of these machines?

- A 71000
B 67000
C 75000
D 65500

Answer: B

Explanation:

Cost of machines A, B and C respectively are : Rs. 95000, 75000 and 43000

Number of machines A, B and C respectively are : 2, 2, 3

$$\Rightarrow \text{Total cost} = (2 \times 95000) + (2 \times 75000) + (3 \times 43000)$$

$$= 190,000 + 150,000 + 129,000 = \text{Rs. } 4,69,000$$

$$\therefore \text{Average cost} = \frac{4,69,000}{7} = \text{Rs. } 67,000$$

\Rightarrow Ans - (B)

Question 54

The value of x for which the expressions $7x + 13$ and $13x - 7$ become equal is .

A -10/3

B 3/10

C -3/10

D 10/3

Answer: D

Explanation:

Expressions : $7x + 13$ and $13x - 7$

$$\Rightarrow 7x + 13 = 13x - 7$$

$$\Rightarrow 13x - 7x = 13 + 7$$

$$\Rightarrow 6x = 20$$

$$\Rightarrow x = \frac{20}{6} = \frac{10}{3}$$

\Rightarrow Ans - (D)

SSC CHSL Important Questions and Answers (Download PDF)

Question 55

A can do a work in 15 days and B in 9 days. If they work on it together for 5 days, then what fraction of work is left?

A 1/6

B 3/7

C 1/3

D 1/9

Answer: D

Explanation:

Let total work to be done = 45 units

$$\text{A's efficiency} = \frac{45}{15} = 3 \text{ units/day}$$

$$\text{B's efficiency} = \frac{45}{9} = 5 \text{ units/day}$$

$$(\text{A} + \text{B})\text{'s 1 day's work} = 3 + 5 = 8 \text{ units/day}$$

$$\text{Work done by them together in 5 days} = 8 \times 5 = 40 \text{ units}$$

$$\text{Work left} = 45 - 40 = 5 \text{ units}$$

$$\therefore \text{Fraction of work that is left} = \frac{5}{45} = \frac{1}{9}$$

\Rightarrow Ans - (D)

Question 56

On dividing $256a^2b^2c^2$ by $64a^2$, we get

- A $2c^2$
- B $2b^2$
- C 4
- D $4b^2c^2$

Answer: D

Explanation:

Expression : $\frac{256a^2b^2c^2}{64a^2}$

$$= \frac{256}{64} \times \frac{a^2b^2c^2}{a^2}$$

$$= 4b^2c^2$$

=> Ans - (D)

Question 57

Rehman walks at 8 km/hr and Roma cycles at 13 km/hr towards each other. What was the distance between them when they started if they meet after 36 minutes?

- A 12.6 kms
- B 18.9 kms
- C 15.8 kms
- D 9.5 kms

Answer: A

Explanation:

Speed of Rehman = 8 km/hr and speed of Roma = 13 km/hr

They are travelling towards each other, thus relative speed = $8 + 13 = 21$ km/hr

$$\text{Time taken} = 36 \text{ min} = \frac{36}{60} \text{ hr} = \frac{3}{5} \text{ hr}$$

Distance = speed \times time

$$= 21 \times \frac{3}{5} = \frac{63}{5}$$

$$= 12.6 \text{ km}$$

=> Ans - (A)

SSC CHSL Study Material

Question 58

On a certain Principal if the Simple interest for two years is Rs 4800 and Compound interest for the two years is Rs 5088, what is the rate of Interest?

- A 6 percent
- B 24 percent
- C 12 percent

D 18 percent

Answer: C

Explanation:

Let the principal amount = Rs. $100x$ and rate of interest = $r\%$

Time period = 2 years

$$\text{Simple Interest} = \frac{P \times R \times T}{100} = 4800$$

$$\Rightarrow \frac{100x \times r \times 2}{100} = 4800$$

$$\Rightarrow 2rx = 4800$$

$$\Rightarrow x = \frac{4800}{2r} = \frac{2400}{r}$$

$$\text{Compound Interest} = P \left[\left(1 + \frac{R}{100} \right)^T - 1 \right] = 5088$$

$$\Rightarrow 100x \left[\left(1 + \frac{r}{100} \right)^2 - 1 \right] = 5088$$

$$\Rightarrow 100x \left[\left(1 + \frac{r^2}{100^2} + 2 \frac{r}{100} \right) - 1 \right] = 5088$$

$$\Rightarrow \left(100 \times \frac{2400}{r} \right) \left[\frac{r^2}{10000} + \frac{2r}{100} \right] = 5088$$

$$\Rightarrow 24r + 4800 = 5088$$

$$\Rightarrow 24r = 5088 - 4800 = 288$$

$$\Rightarrow r = \frac{288}{24} = 12\%$$

\Rightarrow Ans - (C)

Question 59

Two students appeared for an examination. One of them secured 24 marks more than the other and his marks were 65% of the sum of their marks. The marks obtained by them are .

A 78 and 54

B 85 and 61

C 67 and 43

D 52 and 28

Answer: D

Explanation:

Let marks scored by 1st student = x

$$\Rightarrow \text{Marks scored by another student} = (x + 24)$$

$$\text{According to question, } \Rightarrow (x + 24) = \frac{65}{100} \times (x + x + 24)$$

$$\Rightarrow x + 24 = \frac{13}{10} \times (x + 12)$$

$$\Rightarrow 10x + 240 = 13x + 156$$

$$\Rightarrow 13x - 10x = 240 - 156 = 84$$

$$\Rightarrow x = \frac{84}{3} = 28$$

\therefore Marks scored by other student = $28 + 24 = 52$

\Rightarrow Ans - (D)

Question 60

If $3x - 4 > 2 - x/3$ and $3x + 5 > 4x - 5$; then find the value of x ?

- A 7
- B 10
- C -11
- D 1

Answer: A

Explanation:

Expression 1 : $3x - 4 > 2 - x/3$

$$\Rightarrow 3x + \frac{x}{3} > 2 + 4$$

$$\Rightarrow \frac{10x}{3} > 6$$

$$\Rightarrow x > \frac{18}{10} = 1.8 \text{ -----(i)}$$

Expression 2 : $3x + 5 > 4x - 5$

$$\Rightarrow 4x - 3x < 5 + 5$$

$$\Rightarrow x < 10 \text{ -----(ii)}$$

Combining inequalities (i) and (ii), we get : $1.8 < x < 10$

Thus, the only value that x can take among the options = 7

\Rightarrow Ans - (A)

SSC CHSL Free App

Question 61

When a discount of 25% is given on a wedding gown, the profit is 32%. If the discount is 17%, then the profit is .

- A 46.08 percent
- B 49 percent
- C 51.92 percent
- D 43.16 percent

Answer: A

Explanation:

Let Marked Price = $Rs.100x$

When discount is 25%, Selling price = $\frac{75}{100} \times 100x = Rs.75x$

Let Cost price = $Rs.y$

$$\text{Profit \%} = \frac{75x-y}{y} \times 100 = 32$$

$$\Rightarrow \frac{75x-y}{y} = \frac{32}{100} = \frac{8}{25}$$

$$\Rightarrow 1875x - 25y = 8y$$

$$\Rightarrow 25y + 8y = 1875x$$

$$\Rightarrow y = \frac{1875x}{33} = 56.81x$$

When discount is 17%, Selling price = $\frac{83}{100} \times 100x = Rs.83x$

$$\therefore \text{Profit \%} = \frac{83x-56.81x}{56.81x} \times 100$$

$\approx 46.08\%$

=> Ans - (A)

Question 62

If $3x + 2y = 7$ and $4x - y = 24$, then $x - y =$.

A 9

B 1

C -9

D -1

Answer: A

Explanation:

Equation (i) : $3x + 2y = 7$

Equation (ii) : $4x - y = 24$

Multiplying by 2 on both sides, => $8x - 2y = 48$ -----(iii)

Adding equation(i) and (iii),

$$\Rightarrow (3x + 8x) + (2y - 2y) = (7 + 48)$$

$$\Rightarrow 11x = 55$$

$$\Rightarrow x = \frac{55}{11} = 5$$

Substituting it in equation (ii), we get : $4(5) - y = 24$

$$\Rightarrow y = 20 - 24 = -4$$

$$\therefore (x - y) = 5 - (-4) = 5 + 4 = 9$$

=> Ans - (A)

Question 63

The co-ordinates of the centroid of a triangle ABC are (-1,-2) what are the co-ordinates of vertex C, if co-ordinates of A and B are (6,-4) and (-2,2) respectively?

A (-7,-4)

B (7,4)

C (7,-4)

D (-7,4)

Answer: A

Explanation:

Coordinates of centroid of triangle with vertices (x_1, y_1) , (x_2, y_2) and (x_3, y_3) is $(\frac{x_1+x_2+x_3}{3}, \frac{y_1+y_2+y_3}{3})$

Let coordinates of vertex C = (x, y)

Vertex A(6,-4) and Vertex B(-2,2) and Centroid = (-1,-2)

$$\Rightarrow -1 = \frac{-2+6+x}{3}$$

$$\Rightarrow x + 4 = -1 \times 3 = -3$$

$$\Rightarrow x = -3 - 4 = -7$$

Similarly, $\Rightarrow -2 = \frac{-4+2+y}{3}$

$$\Rightarrow y - 2 = -2 \times 3 = -6$$

$$\Rightarrow y = -6 + 2 = -4$$

\therefore Coordinates of vertex C = (-7,-4)

\Rightarrow Ans - (A)

Daily Free SSC Practice Set

Question 64

What is the slope of the line parallel to the line passing through the points (4,-2) and (-3,5)?

A $3/7$

B 1

C $-3/7$

D -1

Answer: D

Explanation:

Slope of line passing through points (4,-2) and (-3,5)

$$= \frac{5+2}{-3-4} = \frac{7}{-7} = -1$$

Slope of two parallel lines is always equal.

\Rightarrow Slope of the line parallel to the line having slope -1 = -1

\Rightarrow Ans - (D)

Question 65

At 24% discount the selling price of a washing machine is Rs 38000, what is the selling price if the discount is 40%?

A Rs 18000

B Rs 30000

C Rs 22320

D Rs 31920

Answer: B

Explanation:

Let Marked Price of the machine = Rs. $100x$

If discount is 24%, Selling price = $\frac{100-24}{100} \times 100x = 76x$

According to ques, $\Rightarrow 76x = 38000$

$$\Rightarrow x = \frac{38000}{76} = 500$$

If discount is 40%, selling price = $\frac{100-40}{100} \times 100x = 60x$

$$= 60 \times 500 = \text{Rs.} 30,000$$

\Rightarrow Ans - (B)

Question 66

Dodecahedron has 20 vertices. How many edges does it have?

- A 30
- B 16
- C 12
- D 24

Answer: A

Explanation:

Euler's formula : $V + F - E = 2$ where V is number of vertices , F is number of faces and E is number of edges.

Dodecahedron has 20 vertices and 12 faces.

$$\Rightarrow E = V + F - 2 = 20 + 12 - 2$$

$$\Rightarrow E = 32 - 2 = 30$$

\Rightarrow Ans - (A)

Free SSC Study Material (18,000 Solved Questions)

Question 67

The diagonal of a square is equal to the side of an equilateral triangle. If the area of the square is $15\sqrt{3}$ sq cm, what is the area of the equilateral triangle?

- A $45/\sqrt{2}$ sq cm
- B $45\sqrt{2}$ sq cm
- C 45 sq cm
- D $45/2$ sq cm

Answer: D

Explanation:

Let the side of square = s cm and diagonal = d cm

$$\Rightarrow \text{Area of square} = (s)^2 = 15\sqrt{3} \text{-----(i)}$$

$$\text{In right triangle of the square, } \Rightarrow (s)^2 + (s)^2 = (d)^2$$

Substituting value of s^2 from equation (i)

$$\Rightarrow (d)^2 = 15\sqrt{3} + 15\sqrt{3} = 30\sqrt{3} \text{-----(ii)}$$

Side of equilateral triangle = Diagonal of square = d cm

$$\therefore \text{Area of equilateral triangle} = \frac{\sqrt{3}}{4} d^2$$

Substituting value of d^2 from (ii), we get :

$$= \frac{\sqrt{3}}{4} \times 30\sqrt{3} = \frac{90}{4} = \frac{45}{2} \text{ cm}^2$$

\Rightarrow Ans - (D)

Question 68

If the curved surface area of a right circular cone is 3080 sq cm and its slant height is 35 cm, find its total surface area?

- A 11088 sq cm
- B 1848 sq cm

C 5544 sq cm

D 2772 sq cm

Answer: C

Explanation:

Let radius of the cone = r cm and slant height, $l = 35$ cm

Curved surface area of cone = $\pi r l = 3080$

$$\Rightarrow \frac{22}{7} \times r \times 35 = 3080$$

$$\Rightarrow 22 \times 5 \times r = 3080$$

$$\Rightarrow r = \frac{3080}{110} = 28$$

\therefore Total surface area of cone = $\pi r l + \pi r^2$

$$= 3080 + \frac{22}{7} \times (28)^2$$

$$= 3080 + 2464 = 5544 \text{ cm}^2$$

\Rightarrow Ans - (C)

Question 69

What is the value of cosec $11\pi/6$?

A $-2/\sqrt{3}$

B $\sqrt{2}$

C -2

D $-\sqrt{2}$

Answer: C

Explanation:

Expression : cosec $11\pi/6$

$$= \text{cosec}(2\pi - \frac{\pi}{6})$$

$$= -\text{cosec}(\frac{\pi}{6}) = -2$$

\Rightarrow Ans - (C)

1500+ Very Important Free SSC Solved Questions

Question 70

$\cos(A+B) + \cos(A-B)$ is equal to ?

A $2\cos A \cos B$

B $2\sin A \sin B$

C $2\sin A \cos B$

D $2\cos A \sin B$

Answer: A

Explanation:

Expression : $\cos(A+B) + \cos(A-B)$

$$= (\cos A \cos B - \sin A \sin B) + (\cos A \cos B + \sin A \sin B)$$

$$= (\cos A \cos B + \cos A \cos B) + (\sin A \sin B - \sin A \sin B)$$

$$= 2\cos A \cos B$$

=> Ans - (A)

Question 71

1/(tanA + cotA) is equal to ?

- A (cosecA + sinA)(secA - cosA)
- B $\sqrt{[(\text{cosec}A - \sin A)(\text{sec}A - \cos A)]}$
- C $\sqrt{[(\text{cosec}A + \sin A)(\text{sec}A - \cos A)]}$
- D (cosecA - sinA)(secA - cosA)

Answer: D

Explanation:

Expression : 1/(tanA + cotA)

$$= 1 \div \left(\frac{\sin A}{\cos A} + \frac{\cos A}{\sin A} \right)$$

$$= 1 \div \left(\frac{\sin^2 A + \cos^2 A}{\sin A \cos A} \right)$$

$$= 1 \times \sin A \cos A = \sin A \cos A$$

Multiplying and dividing by (sinAcosA)

$$= \frac{\sin^2 A \cos^2 A}{\sin A \cos A} = \left(\frac{\cos^2 A}{\sin A} \times \frac{\sin^2 A}{\cos A} \right)$$

$$= \left(\frac{1 - \sin^2 A}{\sin A} \right) \times \left(\frac{1 - \cos^2 A}{\cos A} \right)$$

$$= \left(\frac{1}{\sin A} - \sin A \right) \times \left(\frac{1}{\cos A} - \cos A \right)$$

$$= (\text{cosec}A - \sin A)(\text{sec}A - \cos A)$$

=> Ans - (D)

Question 72

Refer the below data table and answer the question

	Weight	Height in meter
Aruna	79	1.61
Arushi	52	1.68
Arya	52	1.5
Asha	53	1.63

Who was the least weight to height ratio ?

- A Aruna
- B Arushi
- C Arya
- D Asha

Answer: B

Explanation:

Ratio of weight to height

$$\text{Aruna : } \frac{79}{1.61} = 49.06$$

$$\text{Arushi : } \frac{52}{1.68} = 30.95 \quad \text{[LEAST]}$$

$$\text{Arya : } 1.5^{\frac{52}{}} = 34.67$$

$$\text{Asha : } 1.63^{\frac{53}{}} = 32.51$$

=> Ans - (B)

SSC Exam Update Videos & Free Study Material (YouTube Channel)

Question 73

Refer the below data table and answer the question

Year	Company's % Profit
2011	25
2012	5
2013	10
2014	15
2015	20

What was the Revenue of the company if its Expenditure was Rs 575 crore in the year when its % profit was the least?

- A 632.5
- B 603.75
- C 661.25
- D 575

Answer: B

Explanation:

Profit % was least in 2012 = 5%

Let revenue = Rs. x crore and expenditure = Rs. 575 crore

$$\Rightarrow \text{Profit \%} = \frac{x-575}{575} \times 100 = 5$$

$$\Rightarrow \frac{x-575}{575} = \frac{5}{100} = \frac{1}{20}$$

$$\Rightarrow x - 575 = \frac{575}{20} = 28.75$$

$$\Rightarrow x = 575 + 28.75 = 603.75 \text{ crore}$$

=> Ans - (B)

Question 74

The following table shows the number of children in each house of a society.

Number of Children	Number of Houses
0	4
1	13
2	17
3	5

What is the average number of children per house?

- A 2.09
- B 1.84
- C 1.59
- D 1.34

Answer: C

Explanation:

From the table,

$$\text{Average number of children per house} = \frac{\text{Total number of children}}{\text{Total number of houses}} = \frac{(0 \times 4) + (1 \times 13) + (2 \times 17) + (3 \times 5)}{4 + 13 + 17 + 5} = \frac{0 + 13 + 34 + 15}{39} = \frac{62}{39} = 1.59$$

Question 75

Refer the below data and answer the following question.

Partners	Present % share
Anand	10
Basu	5
Chinmay	30
Dhiraj	5
Ejaz	50

If the company has issued six lakhs shares between its five partners and if Chinmay offers to sell 15000 of his shares to Dhiraj, Then Dhiraj will have how many share ?

- A 45000 shares
- B 30000 shares
- C 60000 shares
- D 15000 shares

Answer: A

Explanation:

$$\begin{aligned} \text{Dhiraj's share} &= 5\% \text{ of share from company} + 15000 \text{ share from Chinmay} \\ &= \frac{5}{100} \times 60000 + 15000 \\ &= 30000 + 15000 \\ &= 45000 \end{aligned}$$

Latest Job Updates on Telegram - Join here

English

Instructions

For the following questions answer them individually

Question 76

In the following question, the sentence given with blank to be filled in with an appropriate word. Select the correct alternative out of the four and indicate it by selecting the appropriate option.

The lawyer tried to his client to accept the generous settlement offer.

- A draw
- B seduce
- C incite
- D persuade

Answer: D

Join SSC Daily Quiz Telegram Group

Question 77

Improve the bracketed part of the sentence.

The stranded pilgrims (had waited) in the bitter cold for more than two hours now.

- A has been waiting
- B have been waiting
- C have waited
- D no improvement

Answer: B

Question 78

In the following question, some part of the sentence may have errors. Find out which part of the sentence has an error and select the appropriate option. If a sentence is free from error, select 'No Error'.

I am coming directly(A)/to my office(B)/from the station.(C)/No error(D)

- A B
- B A
- C C
- D D

Answer: A

Question 79

Improve the bracketed part of the sentence. The exhausted travellers seemed relieved when the train finally (came into) the station.

- A pulled in
- B pulled into
- C pulled onto
- D no improvement

Answer: A

25 SSC CHSL Mocks for just Rs. 149

Question 80

Rearrange the parts of the sentence in correct order.

It is for the government,

P-especially one with such a

Q-significant majority, to have the

R-intelligence and leadership to think long term

- A QRP
- B PQR
- C RPQ
- D QPR

Answer: B

Question 81

In the following question, out of the four alternatives, select the alternative which best expresses the meaning of the idiom/phrase. to drink like a fish

- A a person who spends a lot
- B a person who keeps cheating for a very long time without getting noticed
- C a person who needs to relive himself very frequently
- D to drink excessive amounts of alcohol

Answer: D

Question 82

Rearrange the parts of the sentence in correct order.

There is a deeper

P-fissure here that goes

Q-from western theory

R-beyond explanations

- A PRQ
- B PQR
- C QPR
- D RPQ

Answer: A

SSC CHSL Free Mock Test

Question 83

Select the synonym of to preside

- A to acquiesce
- B to concur
- C to officiate
- D to accord

Answer: C

Question 84

Select the synonym of dabble

- A solemn
- B austere
- C meditative
- D dally

Answer: D

Question 85

In the following question, a sentence has been given in Active/Passive voice. Out of four alternatives suggested, select the one, which best expresses the same sentence in Passive/Active voice.

The owners remodelled the car to help it sell.

- A The car was remodelled by the owners to help it sell.
- B The car is being remodelled by the owners to help it sell.
- C The car was remodelled by the owners to help it being sold.
- D The car is being remodelled by the owners to help it being sold.

Answer: A

SSC CHSL Previous Papers (DOWNLOAD PDF)

Question 86

Select the word with the correct spelling.

- A thresonical
- B numeracy
- C nepotesm
- D tolarate

Answer: B

Question 87

In the following question, out of the four alternatives, select the alternative which is the best substitute of the phrase. A person who is lazy and has low standards of cleanliness.

- A hog
- B slob
- C swine
- D brute

Answer: B

Question 88

Select the antonym of therapeutic

- A ameliorative
- B analeptic
- C salubrious
- D inimical

Answer: D

SSC CGL Previous Papers (DOWNLOAD PDF)

Question 89

Select the antonym of to perpetuate

- A to eternize
- B to canonize
- C to cease
- D to bolster

Answer: C

Question 90

In the following question, some part of the sentence may have errors. Find out which part of the sentence has an error and select the appropriate option. If a sentence is free from error, select 'No Error'.

The task of(A)/writing a autobiography(B)/is a difficult one.(C)/No error(D)

- A A
- B B
- C C
- D D

Answer: B

Question 91

In the following question, out of the four alternatives, select the alternative which best expresses the meaning of the idiom/phrase. down to the wire

- A removing the bondage that is keeping one down
- B the last second before the bomb explodes
- C to denote a situation whose outcome is not decided until the very last minute
- D finishing all of one's resources to the last penny

Answer: C

SSC CGL Free Mock Test (Latest Pattern)

Question 92

In the following question, a sentence has been given in Direct/Indirect speech. Out of the four alternatives suggested, select the one, which best express the same sentence in Indirect/Direct speech.

Manoj said, "I must go now."

- A Manoj said that he must go then.
- B Manoj said that he must go than.
- C Manoj said he has to go then.
- D Manoj said that he should be going than.

Answer: A

Question 93

In the following question, out of the four alternatives, select the alternative which is the best substitute of the phrase. To exclude from a society or group.

- A to ostracise
- B to deport
- C to boycott
- D to snub

Answer: A

Question 94

Select the word with the correct spelling.

- A glucose
- B hermetec
- C wigling
- D derogate

Answer: A

SSC CHSL Important Questions and Answers (Download PDF)

Question 95

In the following question, sentence given with blank is to be filled in with an appropriate word. Select the correct alternative out of the four and indicate it by selecting the appropriate option.

If immigrants don't learn to speak the native languages of their new countries, they won't be able to themselves into society.

- A conjoin
- B interface
- C integrate
- D reconcile

Answer: C

Question 96

In the following passage, some of the words have been left out. Read the passage carefully and select the correct answer for the given blank out of the four alternatives.

the Troubled Asset Relief Program (TARP), the government had purchased assets of struggling banks with a view ensuring that they did not collapse taking them the rest of the financial system. These assets later at a profit by the government! The U.S. government had acted smartly, while in the Indian case the banks now find themselves with loans made by them to an individual with negative net worth.

the Troubled Asset Relief Program (TARP)

- A Below
- B Down

C Lower

D Under

Answer: D

Question 97

In the following passage, some of the words have been left out. Read the passage carefully and select the correct answer for the given blank out of the four alternatives.

the Troubled Asset Relief Program (TARP), the government had purchased assets of struggling banks with a view ensuring that they did not collapse taking them the rest of the financial system. These assets later at a profit by the government! The U.S. government had acted smartly, while in the Indian case the banks now find themselves with loans made by them to an individual with negative net worth.

(TARP), the government had purchased assets of struggling banks with a view

A to

B of

C for

D so

Answer: A

SSC CHSL Study Material

Question 98

In the following passage, some of the words have been left out. Read the passage carefully and select the correct answer for the given blank out of the four alternatives.

the Troubled Asset Relief Program (TARP), the government had purchased assets of struggling banks with a view ensuring that they did not collapse taking them the rest of the financial system. These assets later at a profit by the government! The U.S. government had acted smartly, while in the Indian case the banks now find themselves with loans made by them to an individual with negative net worth.

they did not collapse taking them the rest of the financial system.

A from

B all

C along with

D also with

Answer: C

Question 99

In the following passage, some of the words have been left out. Read the passage carefully and select the correct answer for the given blank out of the four alternatives.

the Troubled Asset Relief Program (TARP), the government had purchased assets of struggling banks with a view ensuring that they did not collapse taking them the rest of the financial system. These assets later at a profit by the government! The U.S. government had acted smartly, while in the Indian case the banks now find themselves with loans made by them to an individual with negative net worth.

These assets later at a profit by the government!

A are disposed of

B were disposed of

C are disposed off

D had been disposed off

Answer: B

Question 100

In the following passage, some of the words have been left out. Read the passage carefully and select the correct answer for the given blank out of the four alternatives.

the Troubled Asset Relief Program (TARP), the government had purchased assets of struggling banks with a view ensuring that they did not collapse taking them the rest of the financial system. These assets later at a profit by the government! The U.S. government had acted smartly, while in the Indian case the banks now find themselves with loans made by them to an individual with negative net worth.

find themselves with loans made by them to an individual with negative net worth.

A saddled

B baffled

C puzzled

D caught

Answer: A

SSC CHSL Free App

25 SSC CHSL Mocks for just Rs. 149

SSC CHSL Free Mock Test

SSC CHSL Previous Papers (DOWNLOAD PDF)

SSC CGL Previous Papers (DOWNLOAD PDF)

SSC CGL Free Mock Test (Latest Pattern)

SSC CHSL Important Questions and Answers (Download PDF)

SSC CHSL Study Material

SSC CHSL Free App

Daily Free SSC Practice Set

Free SSC Study Material (18,000 Solved Questions)

1500+ Very Important Free SSC Solved Questions

SSC Exam Update Videos & Free Study Material (YouTube Channel)

Latest Job Updates on Telegram - Join here

Join SSC Daily Quiz Telegram Group