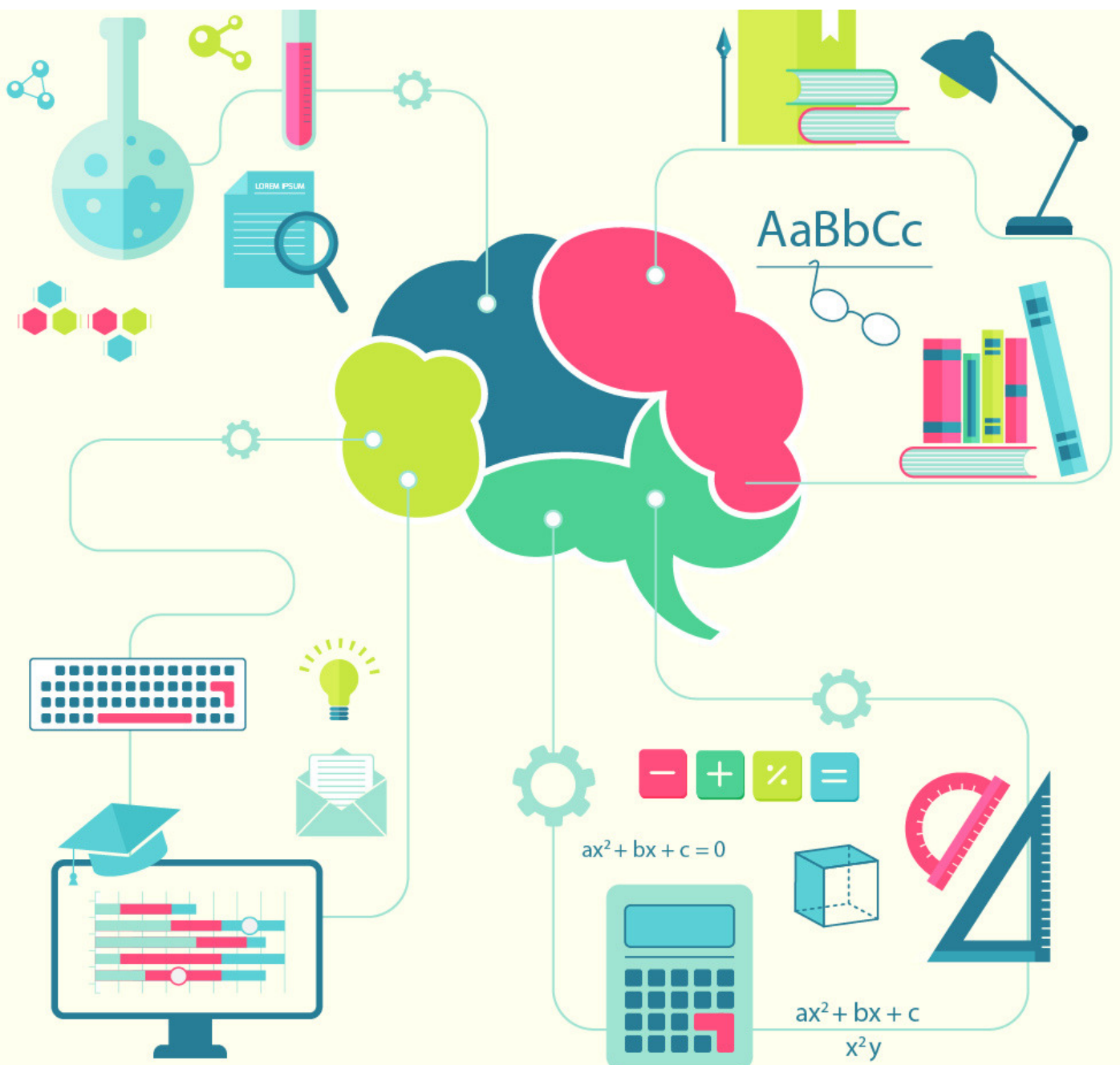


cracku 

IBPS Clerk Computer Awareness PDF

7 Nov 2017





Question 1:

What is an "intranet" ?

- a) Internal internet used to transfer information internally
- b) Internal internet used to transfer information to the outside company
- c) Internal network designed to serve the internal informational needs of a single organization
- d) Internal network designed to transfer the information between two organizations
- e) None of these

Question 2:

The database administrator's function in an organization is?

- a) To be responsible for the more technical aspects of managing the information contained in organizational databases
- b) To be responsible for the executive level aspects of decisions regarding the information management
- c) To show the relationship among entity classes in a data warehouse
- d) To define which data mining tools must be used to extract data
- e) None of these

Question 3:

Every device on the Internet has a unique ____ address (also called an 'Internet address') that identifies it in the same way that a street address identifies the location of a house.

- a) DH
- b) DA
- c) IP
- d) IA
- e) None of these

**IBPS Clerk 2016 Prelims Question
Paper [Download PDF]**



SOLVE PAST IBPS CLERK PAPERS

Question 4:

To send another station a message, the main thing a user has to know is

- a) how the network works
- b) the other station's address
- c) whether the network is packet-switched or circuit-switched
- d) whether this is a voice or data network
- e) None of these

Question 5:

In a client/ server model, a client program _____

- a) asks for information
- b) provides information and files
- c) serves software files to other computers
- d) distributes data files to other computers
- e) None of these

Question 6:

Control in design of an information system is used to?

- a) inspect the system and check that it is built as per specifications
- b) ensure that the system processes data as it was designed to and that the results are reliable
- c) ensure privacy of data processed by it
- d) protect data from accidental or intentional loss
- e) None of these

IBPS Clerk 2015 Prelims Question Paper Analysis

**DOWNLOAD APP FOR 100 FREE
BANKING TESTS**





Question 7:

Each of the following is a true statement except?

- a) on-line systems continually update the master file
- b) in on-line processing, the user enters transactions into a device that is directly connected to the computer system
- c) batch processing is still used today in older systems or in some systems with massive volumes of transactions
- d) information in batch systems will always be up-to-date
- e) None of these

Question 8:

A set of interrelated components that collect, process, store, and distribute information to support decision making and control in an organization best defines -

- a) communications technology
- b) a network
- c) an information system
- d) hardware
- e) None of these

Question 9:

A ____ is a computer connected to two networks.

- a) link
- b) server
- c) gateway
- d) bridge way
- e) None of these

IBPS Clerk 2017 Syllabus



SOLVE PAST IBPS CLERK PAPERS

Question 10:

When you save a presentation, _____

- a) all slides in a presentation are saved in the same file
- b) two files are created; one for graphics and one for content
- c) a file is created for each slide
- d) a file is created for each animation or graphic
- e) None of these

IBPS Clerk Expected Cutoff 2017 State Wise

Answers (1-10) :

- 1) Answer (A)
- 2) Answer (A)
- 3) Answer (C)
- 4) Answer (B)
- 5) Answer (A)
- 6) Answer (B)
- 7) Answer (D)
- 8) Answer (C)
- 9) Answer (D)
- 10) Answer (A)

DOWNLOAD APP FOR 100 FREE
BANKING TESTS





TAKE CRACKU'S FREE IBPS CLERK MOCK

Download PDF of
Quantitative Aptitude Questions
for IBPS Clerk

Top Rated APP for Banking Tests

Whatsapp 'Banking' to join in Banking
Group to this number (7661025557)

IBPS Clerk Solved Previous
Question Papers

TOP RATED BANKING APP

