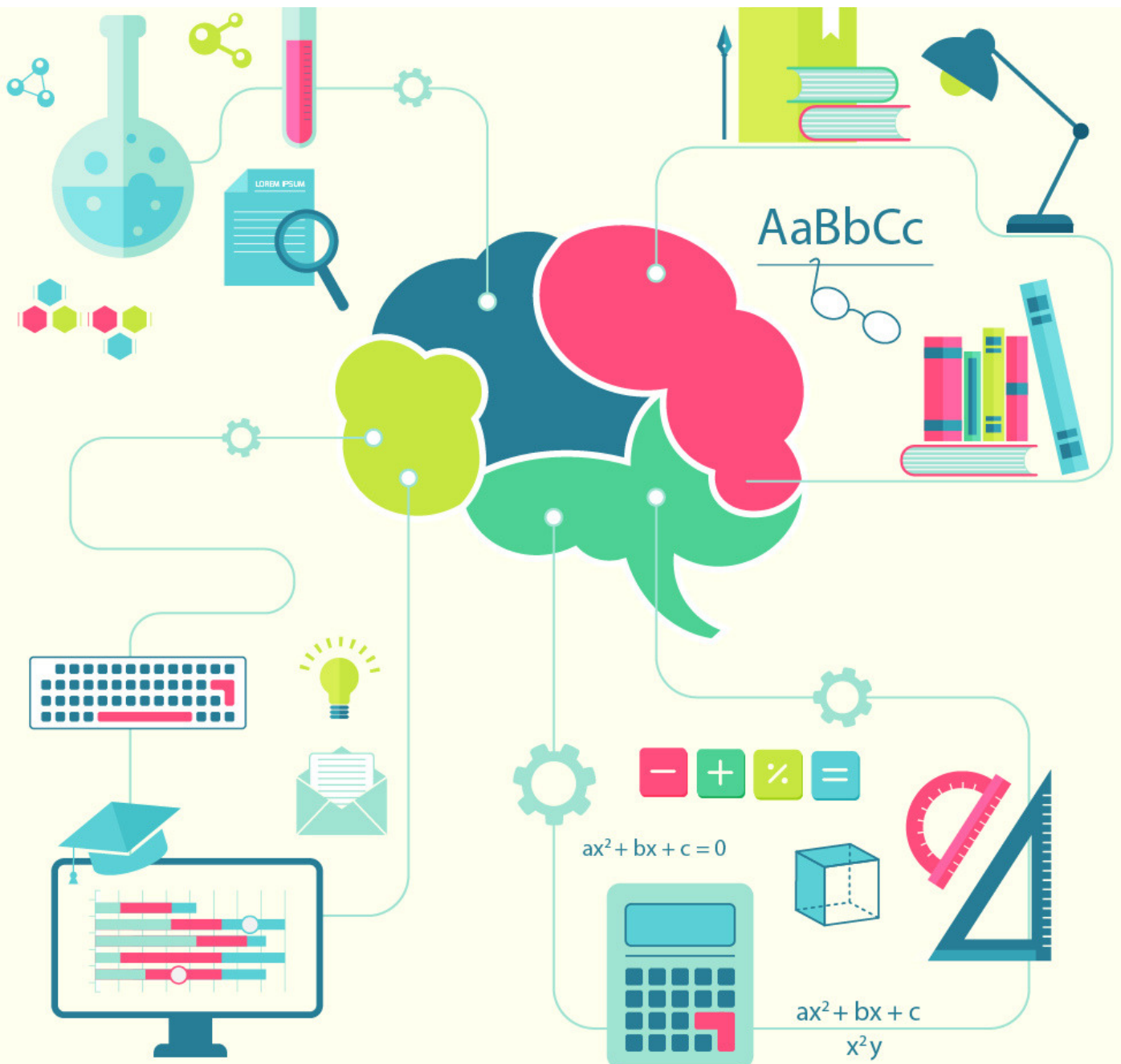


cracku 

Number Series Questions for Bank Exams

29 Nov 2017





TAKE A FREE IBPS CLERK MOCK

Instructions:

What will come in place of the question mark (?) in the given number series

Question 1:

17, 19, 25, 37, ?, 87

a) 63

b) 52

c) 55

d) 67

e) 57

[Click Here](#)

[IBPS Clerk 2016 Prelims Question Paper](#)

Question 2:

61, 82, 124, 187, ?, 376

a) 271

b) 263

c) 257

d) 287

e) 249

TOP RATED BANKING APP





SOLVE PAST IBPS CLERK PAPERS

Question 3:

23, 30, 46, 80, 141, ?

a) 244

b) 212

c) 226

d) 220

e) 238

[Click Here](#)

IBPS Clerk 2015 Prelims Question Paper Analysis

Question 4:

179, 180, 172, 199, 135, ?

a) 236

b) 272

c) 240

d) 256

e) 260

DOWNLOAD APP
FOR 100 FREE BANKING TESTS





TAKE A FREE IBPS CLERK MOCK

Question 5:

14, 6, 5, 6.5, 12, ?

- a) 29
- b) 27
- c) 23
- d) 33
- e) 35

RBI Assistant prelims cut off 2017

Question 6:

8 ? 16 48 192 960

- a) 16
- b) 10
- c) 12
- d) 14
- e) 8

Question 7:

16.8 16.85 16.75 16.9 16.7 ?

- a) 17.5
- b) 17.25
- c) 16.95
- d) 16.25
- e) 18.85



SOLVE PAST IBPS CLERK PAPERS

Question 8:

8 20 35 54 78 ?

- a) 114
- b) 169
- c) 108
- d) 123
- e) 136

Question 9:

16 ? 32 16 4 0.5

- a) 28
- b) 20
- c) 24
- d) 32
- e) 18

IBPS Clerk English Study Material PDF

Question 10:

63 72 97 146 227 ?

- a) 263
- b) 466
- c) 348
- d) 329
- e) 384

DOWNLOAD APP
FOR 100 FREE BANKING TESTS





TAKE A FREE IBPS CLERK MOCK

Solutions (1 to 10)

1) Answer (e)

The pattern in the series is,

$$17+1 \times 2=19$$

$$19+2 \times 3=25$$

$$25+3 \times 4=37$$

$$37+4 \times 5=57$$

$$57+5 \times 6=87$$

Hence, Option E is the correct answer.

2) Answer (a)

The pattern in the series is,

$$61 + 21 = 82$$

$$82 + (21 \times 2) = 82 + 42 = 124$$

$$124 + (21 \times 3) = 124 + 63 = 187$$

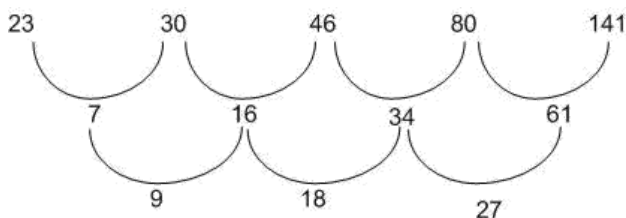
$$187 + (21 \times 4) = 187 + 84 = 271$$

$$271 + (21 \times 5) = 271 + 105 = 376$$

Hence, Option A is the correct answer.

3) Answer (e)

The pattern followed by series is,



Hence the next term will be = $61+36+141$.

$$= 238$$

Therefore, Option E is correct.

DOWNLOAD APP
FOR 100 FREE BANKING TESTS





SOLVE PAST IBPS CLERK PAPERS

4) Answer (e)

The series follows a pattern:

$$179 + 1^3 = 180$$

$$180 - 2^3 = 172$$

$$172 + 3^3 = 199$$

$$199 - 4^3 = 135$$

Hence, Next term in the series will be = $135 + 5^3 = 260$

Therefore, Option E is correct.

5) Answer (a)

14, 6, 5, 6.5, 12, ?

Let unknown quantity be 'x'.

The series is $(14 \times 0.5 - 1)$, $(6 \times 1 - 1)$, $(5 \times 1.5 - 1)$, $(6.5 \times 2 - 1)$

Hence, $x = 12 \times 2.5 - 1$

$$x = 29$$

Hence, Option A is correct.

6) Answer (e)

Consecutive natural numbers are added

$$8 \times 1 = 8$$

$$8 \times 2 = 16$$

$$16 \times 3 = 48$$

$$48 \times 4 = 192$$

$$192 \times 5 = 960$$

IBPS Clerk Input Output Reasoning Questions And Answers PDF

DOWNLOAD APP
FOR 100 FREE BANKING TESTS





TAKE A FREE IBPS CLERK MOCK

7) Answer (c)

Multiples of 0.05 are alternatively added and subtracted

$$16.8 + 0.05 \times 1 = 16.85$$

$$16.85 - 0.05 \times 2 = 16.75$$

$$16.75 + 0.05 \times 3 = 16.9$$

$$16.9 - 0.05 \times 4 = 16.7$$

$$16.7 + 0.05 \times 5 = 16.95$$

8) Answer (c)

The pattern is :

$$8 + 12 = 20$$

$$20 + 12 + 3 = 35$$

$$35 + 12 + 3 + 4 = 54$$

$$54 + 12 + 3 + 4 + 5 = 78$$

$$78 + 12 + 3 + 4 + 5 + 6 = 108$$

9) Answer (d)

The pattern is :

$$16 \times 2 = 32$$

$$32 \times 1 = 32$$

$$32 \times \frac{1}{2} = 16$$

$$16 \times \frac{1}{4} = 4$$

$$4 \times \frac{1}{8} = 0.5$$

10) Answer (c)

Square of odd numbers are added

$$63 + 3^2 = 72$$

$$72 + 5^2 = 97$$

$$97 + 7^2 = 146$$

$$146 + 9^2 = 227$$

$$227 + 11^2 = 348$$

DOWNLOAD APP
FOR 100 FREE BANKING TESTS





SOLVE PAST IBPS CLERK PAPERS

Free GK Tests for IBPS Clerk

Vocabulary For RBI Assistant

IBPS Clerk Solved Previous
Question Papers

Whatsapp 'Banking' to join in Banking
Group to this number (7661025557)

TOP RATED BANKING APP

