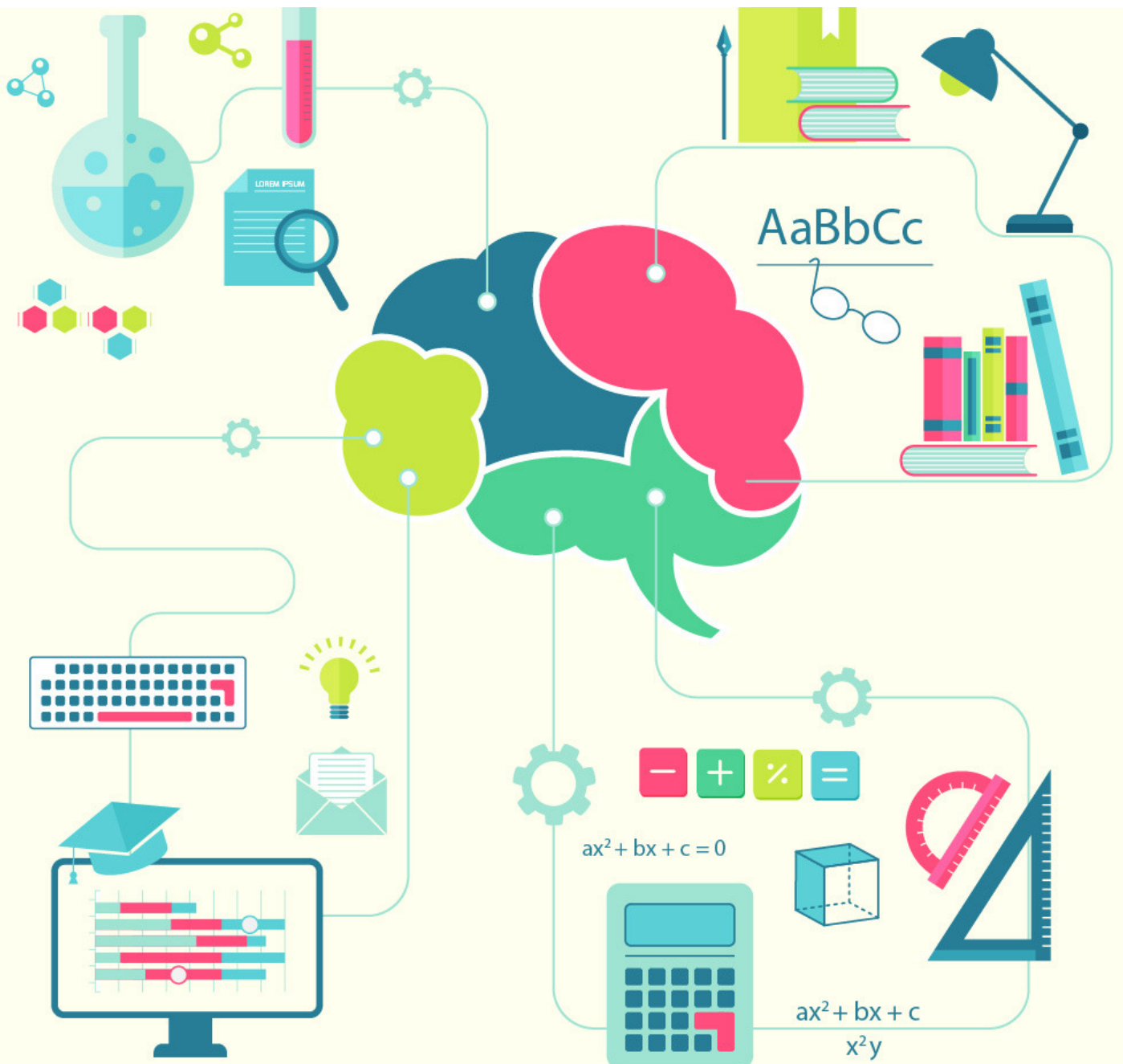


cracku 

Computer Capsule for IBPS Clerk Mains 2017

21 Dec 2017





TAKE CRACKU'S FREE IBPS CLERK MOCK

Question 1:

Codes consisting of lines of varying widths or lengths that are computer-readable are known as

Answer: Bar code

Question 2:

Which key is used to delete one character to the left of the current position of the cursor ?

Answer: Backspace

Question 3:

In a web site, the home page refers to ____

Answer: the first page

IBPS CLERK QUESTION AND ANSWERS PDF

Question 4:

Linux is of software.

Answer: Open Source

Question 5:

Which of the following is used by the browser to connect to the location of the Internet resources ' ?

Answer: URL

Question 6:

How many megabytes make a gigabyte ?

Answer: 1024

HIGHLY RATED BANKING APP





SOLVE PAST IBPS CLERK PAPERS

Question 7:

In word, you can use Styles to-

Answer: Format your documents

[Click Here](#)

IBPS Clerk 2016 Prelims Question Paper

Question 8:

POST stands for -

Answer: Power on Self Test

Question 9:

..... is the process of carrying out commands.

Answer: Executing

[Click here](#)

IBPS Clerk 2015 Prelims Question Paper Analysis

Question 10:

To make a copy of the current document to disk—

Answer: Use the “save as” command

Question 11:

The operating system that is self-contained in a device and resident in the ROM is-

Answer: Embedded Operating System

DOWNLOAD APP for 100 Free
Banking Tests





TAKE CRACKU'S FREE IBPS CLERK MOCK

Question 12:

This dialog box specifies or modifies the worksheet cell range 'containing data to be charted -

Answer: Chart Source Data

Question 13:

Information that comes from an external source and fed into computer software is called —

Answer: Input

Question 14:

The process of trading goods over the Internet is known as -

Answer: e- commerce

Question 15:

Using Print Preview is useful when you want

Answer: View how the document will appear when printed

Question 16:

Which of the following can input graphical images and pictures for a computer'?

Answer: Scanner

Question 17:

Why is the Caps Lock key referred to as a toggle key?

Answer: Because its function goes back and forth every time it is pressed

HIGHLY RATED BANKING APP





SOLVE PAST IBPS CLERK PAPERS

Question 18:

Using output devices one can—

Answer: view or print data

Question 19:

Your position in the text is shown by a-

Answer: Blinker

Question 20:

In Microsoft Word, a word gets selected by clicking it to ___

Answer: twice

Question 21:

What type of keys are 'eta and 'shift' ?

Answer: modifier

Question 22:

In word, you can change Page Margins by—

Answer: Dragging the margin bound• aries on the Ruler

Question 23:

In word, replace option is available on -

Answer: Edit Menu

**DOWNLOAD APP for 100 Free
Banking Tests**





TAKE CRACKU'S FREE IBPS CLERK MOCK

Question 24:

What happens when we try to delete the files on the floppy ?

Answer: The files get deleted and cannot be restored again

Question 25:

In Excel, this is a prerecorded formula that provides a shortcut for complex calculations —

Answer: Function

Question 26:

The binary system is a number system to the base -

Answer: 2

Question 27:

Head quarters of West Central Railway_____?

Answer: Jabalpur

Question 28:

Nick name of Famous Personalitie Tipu Sultan

Answer: Tiger of Mysore

Question 29:

Who invented the Radium?

Answer: Marie Curie and Pierre Curie

Question 30:

Kalinga Cup is associtaed to which sports

Answer: Football

HIGHLY RATED BANKING APP





TAKE CRACKU'S FREE IBPS CLERK MOCK

IBPS Clerk GK PDF

Whatsapp 'Banking' to join in Banking Group to this number (7661025557)

DOWNLOAD APP for 100
Free Banking Tests

