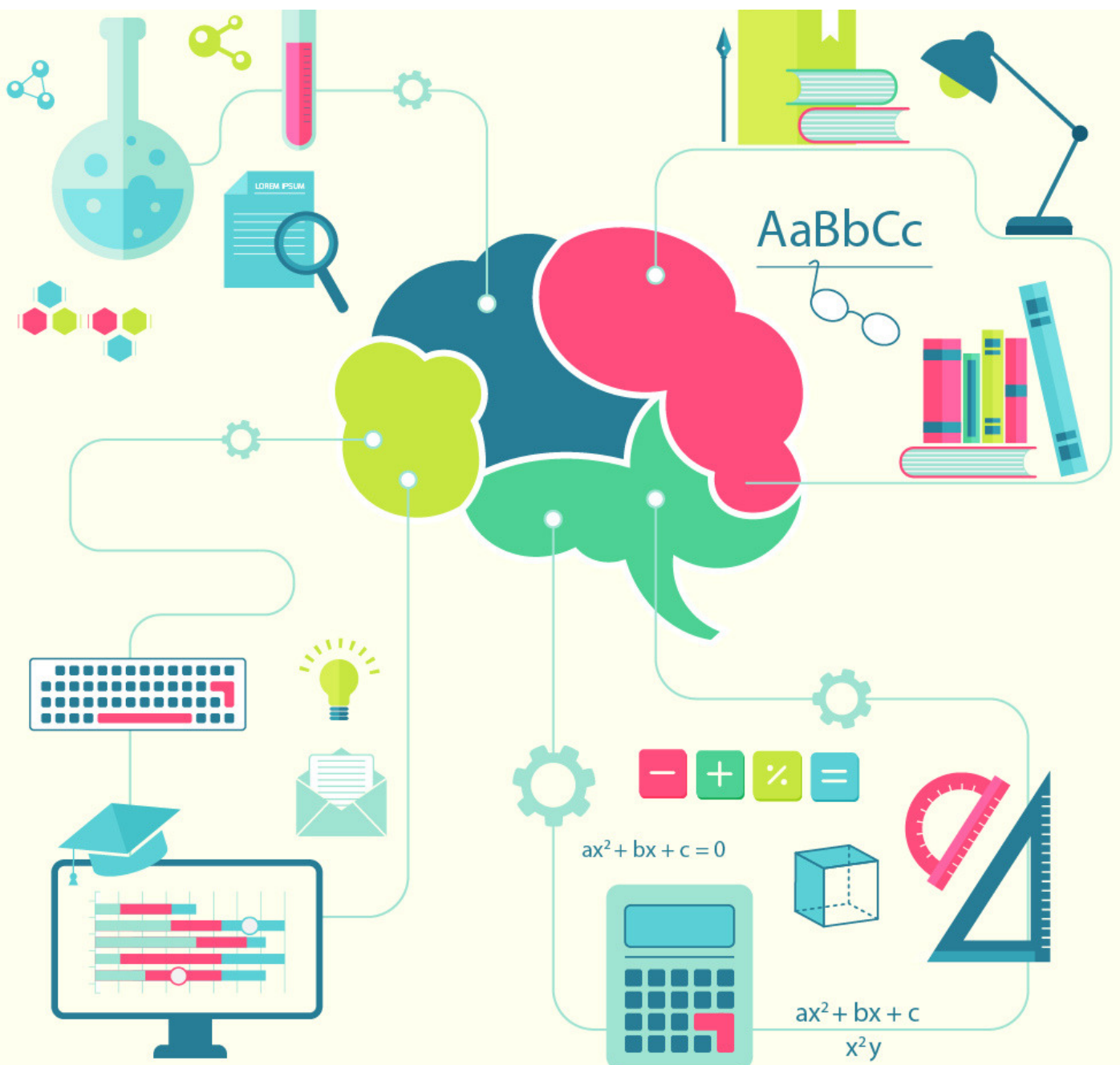


cracku 

IBPS Clerk Quantitative Aptitude Study Material

8 Nov 2017





TAKE CRACKU'S FREE IBPS CLERK MOCK

Question 1:

The ratio of the present ages of a mother and daughter is 7:1 Four years ago the ratio of their ages was 19:1 what will be the mother's age four years from now ?

- a) 42 years
- b) 38 years
- c) 46 years
- d) 36 years
- e) None of these

Question 2:

At present Kavita is twice Sarita's age Eight years hence the respective ratio between Kavita's and Sarita's ages then will be 22:13. What is Kavita's present age ?

- a) 26 yr
- b) 18 yr
- c) 42 yr
- d) 36 yr
- e) None of these

Question 3:

The ages of Nishi and Vinnee are in the ratio of 6:5 After 9 years the ratio of their ages will be 9:8 What is the difference in their ages ?

- a) 9 years
- b) 7 years
- c) 5 years
- d) 3 years
- e) None of these

**Download PDF of
English Study Material for IBPS Clerk**

TOP RATED BANKING APP





SOLVE PAST IBPS CLERK PAPERS

Question 4:

Nikhil spent 45% of the his monthly stipend on food and transport 20% of the remaining on books and half of the remaining on other expenses. If he is left with Rs 880 now how much is his monthly stipend ?

- a) Rs 6,000
- b) Rs 4,500
- c) Rs 3,000
- d) Rs 3,600
- e) None of these

Question 5:

The ratio between the ages of a father and his son four years ago was 19:6. If the difference between the ages of the father and son is 26 years. What will be the ratio of their present ages ?

- a) 21:8
- b) 23:8
- c) 23:10
- d) 27:14
- e) None of these

Question 6:

65% of a number is more than its 36% by 58. What is 23% of that number ?

- a) 66
- b) 69
- c) 48
- d) 46
- e) None of these

IBPS Clerk 2015 Prelims Question Paper Analysis

DOWNLOAD APP FOR 100 FREE
BANKING TESTS





TAKE CRACKU'S FREE IBPS CLERK MOCK

Question 7:

4 men can complete a piece of work in 2 days. 4 women can complete the same piece of work in 4 days whereas 5 children can complete the same piece of work in 4 days. If, 2 men, 4 women and 10 children work together, in how many days can the work be completed ?

- a) 1 day
- b) 3 days
- c) 2 days
- d) 4 days
- e) None of these

Question 8:

A tank is filled in 5 hours by three pipes A, B and C. The pipe C is twice as fast as B and B is twice as fast as A. How much time will pipe A alone take to fill the tank?

- a) 22 hrs
- b) 27 hrs
- c) 35 hrs
- d) cannot be determined
- e) None of these

Question 9:

The profit earned after selling an article for Rs. 625/- is the same as loss incurred after selling the article for Rs. 435/- What is the cost price of the article ?

- a) Rs. 530/-
- b) Rs. 520/-
- c) Rs. 540/-
- d) Rs. 550/-
- e) None of these

IBPS Clerk 2017 Syllabus

TOP RATED BANKING APP





SOLVE PAST IBPS CLERK PAPERS

Question 10:

Arunika brought some articles and sold half of them at Rs. 22103 thereby making a profit of 15%. At what price should she sell the rest of them so as to earn a profit of 25% on the remaining half?

- a) Rs. 25947
- b) Rs. 23528
- c) Rs. 27130
- d) Rs. 24025
- e) Rs. 26240

IBPS Clerk Expected Cutoff 2017 State Wise

Solutions :

1) Answer (C)

Let the present ages of daughter and mother be d and m respectively.

$$7d = m$$

$$19(d-4) = m-4$$

$$\Rightarrow 19d - 76 = 7d - 4$$

$$\Rightarrow 12d = 72$$

$$\Rightarrow d = 6 \text{ and } m = 42$$

Mother's age four years from now will be $42 + 4 = 46$

2) Answer (D)

Let Kavita's present age be $2x$.

Sarita's present age is x .

Now, 8 years hence,

$$(2x + 8)/(x + 8) = 22/13$$

$$26x + 104 = 22x + 176$$

$$x = 18$$

Hence, Kavita's age = $18 \times 2 = 36$ years.

Option D is correct option.

DOWNLOAD APP FOR 100 FREE
BANKING TESTS





3) Answer (D)

Let the ages of Nishi and Vinnee be x and y .

Now, as per given conditions,

$$(x/y) = (6/5) \text{ i.e } 5x=6y$$

after 9 years,

$$(x+9)/(y+9) = 9/8 \text{ i.e } 8x-9y=9$$

After solving we get $x = 18$ and $y = 15$.

Differences in the ages = $18-15=3$

Hence, option D is correct.

4) Answer (E)

Let Nikhil's monthly stipend be equal to S .

So, monthly spend on food and transport is $0.45S$

Amount remaining is $S-0.45S = 0.55S$

Amount spent on books is 20% of $0.55S = 0.11S$

Amount remaining is $0.55S - 0.11S = 0.44S$

Amount spent on other expenses is 50% of $0.44S = 0.22S$

So, amount remaining is $0.44S - 0.22S = 0.22S$

$$0.22S = 880$$

$$\text{Hence, } S = 880/0.22 = 4000$$

As this is not given in the options, the correct answer is option (e)

5) Answer (A)

Let the ages of the father and son be F and $F-26$.

Their ages four years ago are $F-4$ and $F-30$.

The ratio of these ages is $19:6$

$$\text{Therefore, } (F-4)/(F-30) = 19/6$$

$$\text{Or, } 6F - 24 = 19F - 570$$

$$\text{So, } 13F = 546$$

$$\text{Or, } F = 42 \text{ and the age of the son is } 42-26 = 16$$

Hence, the required ratio is $42:16 = 21:8$

How to Prepare for IBPS Clerk Exam at Home

DOWNLOAD APP FOR 100 FREE
BANKING TESTS





SOLVE PAST IBPS CLERK PAPERS

6) Answer (D)

Let the number be X

$$\text{So, } 0.65X - 0.36X = 58$$

$$\text{Or, } 0.29X = 58 \text{ and } X = 200$$

$$\text{Hence, } 23\% \text{ of } X \text{ equals } 0.23 \times 200 = 46$$

7) Answer (A)

Let us first get a relation between the work done by a man, woman and a child.

$$1 \text{ man can do a work in } 4 \times 2 = 8 \text{ days}$$

$$1 \text{ woman can do the same work in } 4 \times 4 = 16 \text{ days}$$

$$1 \text{ child can do the same work in } 4 \times 5 = 20 \text{ days}$$

$$\Rightarrow 1 \text{ man} = 2.5 \text{ child and } 1.25 \text{ woman} = 0.8 \text{ child}$$

$$2 \text{ men} + 4 \text{ women} + 10 \text{ children} = 5 + 5 + 10 = 20 \text{ children}$$

$$1 \text{ child takes } 20 \text{ days to complete a work} \Rightarrow 20 \text{ children will take } 1 \text{ day to complete the same work}$$

8) Answer (C)

Suppose pipe A alone takes x hours to fill the tank.

Then, pipes B and C will take $x/2$ and $x/4$ hours respectively to fill the tank.

$$1/x + 2/x + 4/x = 1/5 \Leftrightarrow 7/x = 1/5 \Leftrightarrow x = 35 \text{ hrs}$$

9) Answer (A)

Let the cost price of the article be X.

$$\text{So, profit when it is sold for Rs. } 625 = 625 - X$$

$$\text{Loss made when it is sold for Rs. } 435 = X - 435$$

$$\text{As they are equal, it implies that } 625 - X = X - 435$$

$$\text{Or, } 2X = 625 + 435 = 1060$$

$$\text{Hence, } X = 530$$

Download PDF of Computer Awareness
for IBPS Clerk

DOWNLOAD APP FOR 100 FREE
BANKING TESTS





10) Answer (D)

Let the cost price be CP.

Profit = .15CP

Profit = Selling Price - CP

$1.15 \text{ CP} = 22,103$

$\text{CP} = 19,220$

Now to obtain 25% profit, we have to sell them at $1.25 \text{ CP} = 1.25 * 19220 = 24,025$

Top Rated APP for All Banking Tests

Whatsapp 'Banking' to join in Banking Group to this number (7661025557)

IBPS Clerk Solved Previous Question Papers

TOP RATED BANKING APP

