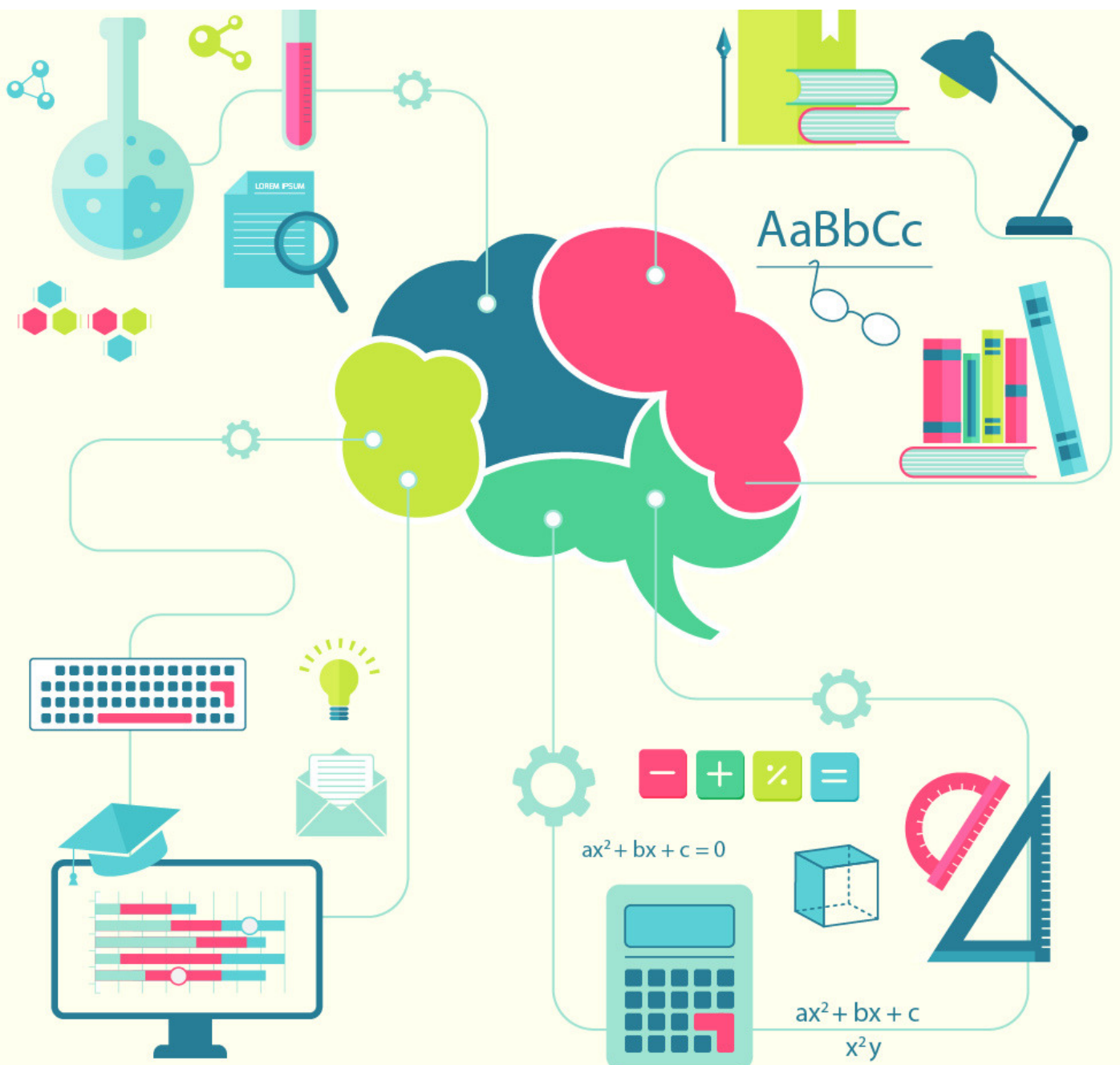


cracku 

# IBPS Clerk Simplification Questions PDF

24 Oct 2017





## Instructions:

What will come in place of question mark (?) in the following questions:

### Question 1:

32.05% of 259.99=?

- A. 92
- B. 88
- C. 78
- D. 90
- E. 83

### Question 2:

$\frac{1}{8}$  of  $\frac{2}{3}$  of  $\frac{3}{5}$  of 1715 =?

- A. 80
- B. 85
- C. 90
- D. 95
- E. 75

IBPS Clerk 2016 Prelims Question Paper  
[Download PDF]



# SOLVE PAST IBPS CLERK PAPERS

## Question 3:

$$25.05 \times 123.95 + 388.999 \times 15.001 = ?$$

- A. 900
- B. 8950
- C. 8935
- D. 8975
- E. 8995

## Question 4:

$$561 \div 35.05 \times 19.99 = ?$$

- A. 320
- B. 330
- C. 315
- D. 325
- E. 335

## Question 5:

$$(15.01)^2 \times \sqrt{730} = ?$$

- A. 6125
- B. 6225
- C. 6200
- D. 6075
- E. 6250

## IBPS Clerk 2015 Prelims Question Paper Analysis

DOWNLOAD OUR TOP RATED APP





# SOLVE PAST IBPS CLERK PAPERS

## Question 6:

$$4376 + 3209 - 1784 + 97 = 3125 + ?$$

- A. 2713
- B. 2743
- C. 2773
- D. 2793
- E. 2737

## Question 7:

$$\sqrt{?} + 14 = \sqrt{2601}$$

- A. 1521
- B. 1369
- C. 1225
- D. 961
- E. 1296

## Question 8:

$$85\% \text{ of } 420 + ? \% \text{ of } 1080 = 735$$

- A. 25
- B. 30
- C. 35
- D. 40
- E. 45

## IBPS Clerk 2017 Syllabus

DOWNLOAD OUR TOP RATED APP





# SOLVE PAST IBPS CLERK PAPERS

## Question 9:

$7/3$  of  $5/4$  of 3024 = ?

- A. 8920
- B. 8940
- C. 8960
- D. 8820
- E. 8640

## Question 10:

30% of 1225 – 64% of 555 = ?

- A. 10.7
- B. 12.3
- C. 13.4
- D. 17.5
- E. None of these

## IBPS Clerk Expected Cutoff 2017 State Wise

### Solutions:

1) Answer (E)

The problem can be solved quickly by rounding off,

32.05% ~32 and 259.99~ 260

Now, 32% of 260 = 83.2

DOWNLOAD OUR TOP RATED APP





# SOLVE PAST IBPS CLERK PAPERS

2) Answer (B)

$$\text{Now, } \frac{1}{8} \text{ of } \frac{2}{3} = (1/8) * (2/3) = 1/12$$

$$\text{Also, } \left(\frac{1}{8} \text{ of } \frac{2}{3}\right) \text{ of } \frac{3}{5} = (1/12) * (3/5) = 1/20$$

$$\text{Now, } (1/20) \text{ of } 1715 = (1/20) * 1715 = 85$$

3) Answer (C)

Here we are approximating 25.05~25, 123.95~124, 388.99~389, 15.001~15.

The question can be rewritten as,

$$25 * 123 + 388 * 15 = 8935$$

Hence the correct option is 8935.

4) Answer (A)

By approximating 561~560, 19.99~20 and 35.05~35 for easier calculation,

the question can be written as,

$$560 * (20/35) = 320$$

5) Answer (D)

The question can be reframed as,

$$15^2 * \sqrt{729} = 225 * 27 = 6075$$

## IBPS Clerk Salary After 7th pay Commission

DOWNLOAD OUR TOP RATED APP





# SOLVE PAST IBPS CLERK PAPERS

6) Answer (C)

$$\text{Expression : } 4376 + 3209 - 1784 + 97 = 3125 + ?$$

$$\Rightarrow 7682 - 1784 = 3125 + x$$

$$\Rightarrow 5898 = 3125 + x$$

$$\Rightarrow x = 5898 - 3125 = 2773$$

7) Answer (B)

$$\text{Expression : } \sqrt{?} + 14 = \sqrt{2601}$$

$$\Rightarrow \sqrt{x} + 14 = 51$$

$$\Rightarrow \sqrt{x} = 51 - 14 = 37$$

$$\Rightarrow x = (37)^2 = 1369$$

8) Answer (C)

$$\text{Expression : } 85\% \text{ of } 420 + ? \% \text{ of } 1080 = 735$$

$$\Rightarrow \left(\frac{85}{100} \times 420\right) + \left(\frac{x}{100} \times 1080\right) = 735$$

$$\Rightarrow 357 + 10.8x = 735$$

$$\Rightarrow 10.8x = 735 - 357 = 378$$

$$\Rightarrow x = \frac{378}{10.8} = 35$$

## IBPS Clerk 2017 Vacancy State Wise

DOWNLOAD OUR TOP RATED APP





# SOLVE PAST IBPS CLERK PAPERS

9) Answer (D)

Expression :  $\frac{7}{3}$  of  $\frac{5}{4}$  of 3024 = ?

$$= \frac{7}{3} \times \frac{5}{4} \times 3024$$

$$= 35 \times 252 = 8820$$

10) Answer (B)

Expression : 30% of 1225 – 64% of 555 = ?

$$= \left(\frac{30}{100} \times 1225\right) - \left(\frac{64}{100} \times 555\right)$$

$$= 367.5 - 355.2 = 12.3$$

Whatsapp 'Banking' to join in Banking  
Group to this number (7661025557)

IBPS Clerk Solved Previous  
Question Papers

DOWNLOAD OUR TOP RATED APP

