



RRB NTPC 27 April 2016 - Shift 1

All rights reserved. No part of this publication may be reproduced, distributed, or transmitted in any form or by any means, electronic, mechanical, photocopying, recording or otherwise, or stored in any retrieval system of any nature without the permission of cracku.in, application for which shall be made to support@cracku.in

RRB NTPC 27 April 2016 - Shift 1

Instructions

For the following questions answer them individually

Question 1

Who along with Bhagath Singh, was the main accused in Assembly Bomb Case?

- A Ram Praiad Bismil
- B Ashafaqulla
- C Surya Sen
- D Betukeshwas Dutta

Answer: D

RRB NTPC Previous Papers (Download PDF)

Question 2

In the Union Budget 2015-16, two new IIMs will be opened in which of the following states?

- A Jammu & Kashmir, Punjab
- B Andhra Pradesh, Punjab
- C Andhra Pradesh, Jammu & Kashmir
- D Jammu & Kashmir, Bihar

Answer: C

Question 3

CDM stands for:

- A Clean Development Mechanism
- B Carbon Degeneration Mechanism
- C Carbon Degeneration Mission
- D Cash Deposit Mechanism

Answer: A

Question 4

R is P's father's nephew. S is P's cousin but not the brother of R. How is S related to R?

- A Father
- B Sister
- C Mother
- D Aunt

Answer: B

RRB NTPC Free Mock Tests

Question 5

Which Indian city is known as "The City Of Pearls" as once it was the only global center of large diamonds and natural pearls made?

- A Hyderabad
- B Jodhpur
- C Amdavad (Ahmedabad)
- D Chennai

Answer: A

Question 6

On selling rice for Rs. 45 per kg, a shopkeeper bears loss of 20%. To earn a profit of 20%, the selling price should be

- A Rs. 67.50
- B Rs. 65
- C Rs. 70
- D Rs. 60

Answer: A

Question 7

Read the statement and select a conclusion out of the given alternatives!

Statement: Most garments in that shop are expensive.

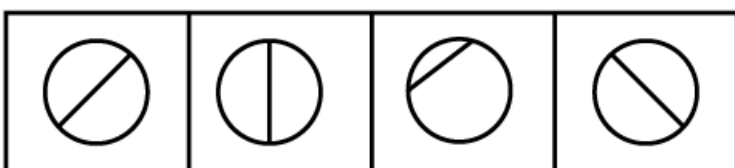
- A There are no cheap garments available in that shop.
- B Handloom garments in that shop are cheap.
- C There are cheap garments also in that shop.
- D Some garments in that shop are expensive.

Answer: C

RRB JE Previous Papers (Download Pdf)

Question 8

Choose the figure which is different from the rest three.



(1)

(2)

(3)

(4)

- A 1
- B 2
- C 3
- D 4

Answer: C

Question 9

Shivam Industries installed a flour mill for Rs. 300,000 five years ago. If the fixed annual rate of depreciation is 5% and they sold the mill for Rs. 250,000, their gain/loss % is?

- A No Gain - No loss
- B Loss, 10%
- C Gain, 12.5%
- D Gain, 10.0%

Answer: D

Explanation:

mill worth originally = 300000

depreciation for 1 yr = $300000 \times 5/100$

= Rs 15000

depn for 5yrs = Rs. 75000

Value after 5yrs = $300000 - 75000$

= Rs 225000

selling Price = Rs 250000

Sp > CP

gain = $250000 - 225000 = \text{Rs } 25000$

gain% = $25000/250000 \times 100$

Step-by-step explanation:

= 10 % Ans

Question 10

Zeatin is produced in and transported to in the xylem where it promotes cell division.

- A Shoots, Roots
- B Roots, Shoots
- C Stems, Leaves
- D Leaves, Stems

Answer: B

Question 11

Which of the following term is associated with Hockey?

- A Faceoff
- B Kickoff
- C Offside
- D Bodyline

Answer: A

Question 12

Who among the following was not a chief minister before he/she became the Prime Minister of India?

- A Morarji Desai
- B Charan Singh
- C Indira Gandhi
- D V.P.Singh

Answer: C

Question 13

Which country topped the list on "World Happiness Index", 2015 published by the Sustainable Development Solutions Network (SDSN)?

- A Bhutan
- B Switzerland
- C Iceland
- D Norway

Answer: B

Daily Free RRB Online Test

Question 14

Mecca Masjid, Hyderabad was completed by:

- A Muhammad Quli Qutb Shah
- B Jahangir
- C Qutb Shahi
- D Aurangzeb

Answer: D

Question 15

If $A + B = 90^\circ$ and $\cos B = 1/3$; then the value of $\sin A$ is:

- A 1/2
- B 1/4
- C 1/3
- D 2/3

Answer: C

Explanation:

Given $A+B=90^\circ$

$B=90^\circ-A$

Taking cos both sides

$$\cos B = \cos(90^\circ - A)$$

$$\frac{1}{3} = \sin A$$

Question 16

Which among them is the largest network in terms of area?

- A MAN
- B WAN
- C Intranet
- D Internet

Answer: D

RRB Group-D Previous Papers

Question 17

..... are the most intelligent mammals on earth.

- A Dolphins
- B Elephants
- C Deer
- D Hippos

Answer: A

Question 18

Four pair of words are given below out of which three are alike in some manner and one pair is different. Which is different from the rest?

- A Coins : Numismatics
- B Stamps : Phillumenist
- C Books : Bibliophilist
- D Post cards : Deltiologist

Answer: B

Explanation:

Bibliophilist-who collects or is fond of books (Book)

Numismatics-who studies or collects coins (Coins)

Deltiologist-who collects postcards as a hobby (Post cards)

Phillumenist -a collector of matchbox or matchbook labels (ODD ONE)

Question 19

If $X^2 = 25^2 - 15^2$, then find the value of X.

A 40

B 50

C 20

D 25

Answer: C

Explanation:

$$X^2 = 25^2 - 15^2 = 625 - 225 = 400$$

$$X^2 = 400$$

$$X = 20$$

RRB Free Videos (You Tube Channel)

Question 20

..... enacted during an emergency imposed by Mrs. Indira Gandhi, is also known as mini constitution because of important & large number of changes made to it.

A 42nd Amendment Act

B 44th Amendment Act

C 74th Amendment Act

D 73rd Amendment Act

Answer: A

Question 21

In a certain code language, if SIGN is coded as 8367 and DIRECT is coded as 134259, then SIREN will be coded

A 83472

B 84327

C 83247

D 83427

Answer: D

Explanation:

SIGN is coded as 8367 and DIRECT is coded as 134259

S=8 D=1

I=3 I=3

G=6 R=4

N=7 E=2

C=5

T=9

SIREN=83427

Question 22

Which of the following is not true about Frictional force?

- A Friction is the force which opposes the relative motion of two surfaces in contact.
- B The force of friction that acts when a body is moving (sliding) on a surface is called sliding friction.
- C Friction in machines wastes energy and also causes wear and tear.
- D Rolling friction is much more than sliding friction, the use of ball bearings in a machine considerably reduces friction.

Answer: D

20 RRB NTPC Mocks-Tests Rs.149

Question 23

In which year did Ole Romer measure the speed of light for the first time in the history?

- A 1776
- B 1676
- C 1876
- D 1867

Answer: B

Question 24

Calculate the simple interest if Rs. 1800 is invested for 10 years at a rate of 5% per annum.

- A Rs. 900
- B Rs. 450
- C Rs. 1800
- D Rs. 2700

Answer: A

Question 25

Indira Gandhi National Centre for the Arts is headquartered at:

- A New Delhi

- B Kolkata
- C Lucknow
- D Mumbai

Answer: A

10 RRB JE Mocks-Tests Rs.117

Question 26

Find out the greatest four digit number when divided by 8, 12, 16 leaves 2 as remainder in every case?

- A 9984
- B 9985
- C 9986
- D 9987

Answer: C

Question 27

Where did the Indian Independence League form in 1907?

- A Surat
- B Calcutta
- C California
- D Berlin

Answer: C

Question 28

A loan of Rs. 305 was taken at a certain rate per annum of compound interest, for 3 years. After three years the amount repaid was Rs. 670, calculate the rate of compound Interest.

- A 30%
- B 35%
- C 33%
- D 25%

Answer: A

RRB General Science Notes (Download Pdf)

Question 29

Pankaj Advani clinched his 13th World title after winning the World 6-Red Snooker Championship by defeating of China.

- A Li Hang

- B Chen Zhe
- C Yan Bingtao
- D Lu Ning

Answer: C

Question 30

Acid Rain has pH value of

- A 5.5 or less
- B 12.5 or more
- C 10.5 or more
- D 8.5 or more

Answer: A

Question 31

Read the statements and select a conclusion from the given alternatives:

Statement: All the tablas are instruments. All instruments are pianos.

Conclusion:

I. All the pianos are instruments.

II. All the tablas are pianos.

- A Only I conclusion follows
- B Only II conclusion follows
- C Either I or II follows
- D Neither I nor II follows

Answer: B

RRB GK Material (Download Pdf)

Question 32

First human who got married in space is:

- A Yuri Denver
- B Yuri Johnson
- C Yuri Malenchenko
- D David Malenchenk

Answer: C

Question 33

What is the name of ecologically clean rocket developed by Russia based space research center?

- A Angara

- B Vostok
- C Korolev
- D Luna

Answer: A

Question 34

The factors of $x^2 + 8x + 12$ are

- A $(x + 6)(x + 2)$
- B $(x - 6)(x + 2)$
- C $(x - 4)^2$
- D $(x + 6)(x - 2)$

Answer: A

Join Competitive Exam Updates Telegram Group

Question 35

Insert the missing character marked as

18	24	32
12	14	16
3	?	4
72	112	128

- A 2
- B 3
- C 4
- D 5

Answer: B

Question 36

The International Cricket Council (ICC), the international governing body of Cricket founded in 1909 by representatives from England, Australia and South Africa, was initially known as:

- A International Cricket Conference
- B International Cricket Council
- C Imperial Cricket Council
- D Imperial Cricket Conference

Answer: D

Question 37

Read the information and answer the question based on it.

In an examination, a student gets an average of 76.2 marks. The total marks for the five subjects are 500. His marks in 4 subjects are mentioned: calculate the marks obtained by the students in Social science marked as "x" in the table below.

Subject	Maths	English	Sanskrit	Science	SocialScience
Marks Obtained	76	87	83	78	x

- A 60
- B 58
- C 57
- D 56

Answer: C

RRB NTPC Previous Papers (Download PDF)

Question 38

In a right-angled triangle. the hypotenuse is 4 cm longer than the perpendicular which is 4 cm longer than the base. Calculate the length of the hypotenuse.

- A 12 cm
- B 10 cm
- C 20 cm
- D 30 cm

Answer: C

Question 39

By selling 33m clothes, a person gains cost price of 11m clothes. Find the gain %.

- A 30%
- B 33.33%
- C 25%
- D 35%

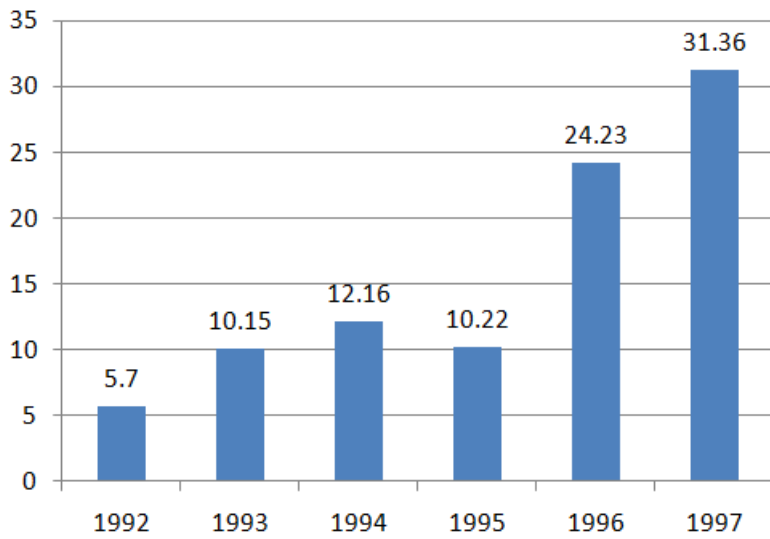
Answer: B

Instructions

Answer the questions based on the following bar chart:

The following bar chart shows the trends of mutual funds investments into India from all over the world.

India's Mutual Funds Investment



Question 40

What was absolute difference in the mutual funds investments to India in between 1996 and 1997?

- A 7.29
- B 7.13
- C 8.13
- D 7.77

Answer: B

RRB NTPC Free Mock Tests

Question 41

If India mutual funds investments from countries was proportionately the same in 1992 and 1997 as the total mutual funds investments from all over the world and like mutual funds investments in 1992 from the countries was Euro 2 million. What was the amount of mutual funds investments from the countries in 1997?

- A 11
- B 0.72
- C 11.28
- D 11.5

Answer: A

Question 42

Which year exhibited the highest growth in mutual funds investments in India over the period shown?

- A 1993
- B 1994
- C 1995
- D 1996

Answer: D

Instructions

For the following questions answer them individually

Question 43

What is the ratio of radius of incircle and circumcircle for an equilateral triangle with an area of $22\sqrt{3}$ square units?

- A 1/2
- B 1/4
- C 1/3
- D 2/3

Answer: A

Explanation:

We know that

$$\text{radius of incircle of equilateral triangle} = \frac{\text{side}}{2\sqrt{3}}$$

$$\text{radius of circumcircle of equilateral triangle} = \frac{\text{side}}{\sqrt{3}}$$

hence there ratio = 1:2

RRB JE Previous Papers (Download Pdf)

Question 44

If in a certain language, STRING is coded as TSIRGN, how is RANDOM coded in that code?

- A ANRDMO
- B ARDONM
- C ARDNMO
- D ADRONM

Answer: C

Question 45

The average of 5 consecutive numbers is 50, then difference between "product of largest and smallest number with "product of fourth and second number is:

- A 3
- B -3
- C 0
- D 10

Answer: B

Question 46

"Group of Monuments at Mahabalipuram one of the "UNESCO World Heritage Site" founded by the Pallava kings is in district of

- A Thanjavur, Tamil Nadu
- B Kancheepuram, Tamil Nadu
- C Sivagangai, Tamil Nadu
- D Nilgiris, Tamil Nadu

Answer: B

RRB JE Free Mock Test

Question 47

Insert the missing character marked as '?'.

13	12	5
17	15	8
25	24	?
29	21	20

- A 7
- B 9
- C 15
- D 11

Answer: A

Question 48

In a certain code language, if COTTON is coded as 325526 and WOOLEN is coded as 122976, then TOWEL will be coded as?

- A 12579
- B 21795
- C 52179
- D 79125

Answer: C

Explanation:

COTTON is coded as 325526 and WOOLEN is coded as 122976

C-3

O-2

T-5

N=6

W=1

L=9

E=7

N=6

TOWEL=52179

Question 49

The value of $\sqrt{0.0144}$ is:

A 0.12

B 0.012

C 1.2

D 0.0012

Answer: A

Explanation:

$$\begin{aligned}\sqrt{0.0144} &= \sqrt{0.12 \times 0.12} \\ &= 0.12\end{aligned}$$

Daily Free RRB Online Test

Question 50

Calculate the sum of squares from 1 to 9.

A 284

B 285

C 385

D 380

Answer: B

Explanation:

We need to compute $1^2 + 2^2 + 3^2 + \dots + (9)^2$

formula

$$Sum = \frac{n(n+1)(2n+1)}{6}$$

Where n=9

$$Sum = \frac{9(9+1)(18+1)}{6}$$

$$Sum = 3 \times 5 \times 19$$

$$Sum = 285$$

Question 51

Atmosphere of Venus mostly contains which of the following gases?

A Nitrogen

B Hydrogen

C Oxygen

D Carbon dioxide

Answer: D

Question 52

Aaton Van Leewen Hock is famous for the discovery of

A Microscope

B Nylon

C Laser

D Radio valve

Answer: A

RRB Group-D Previous Papers

Question 53

A thief drives his motorcycle at a speed of x km/hr. The Policemen started chasing him in a jeep after 4 hours and catches in 4 hours. If the average speed of jeep of policemen is 40 km/hr, then calculate the speed in km/hr for the thief's motorcycle?

A 30

B 36

C 45

D 50

Answer: D

Question 54

A map is drawn at a scale of 2 mm for 500 kms. Two places are marked at the distance of 3.6 mm; calculate the distance (in kms.) between these two places?

A 900

B 800

C 750

D 860

Answer: A

Explanation:

2 mm = 500km

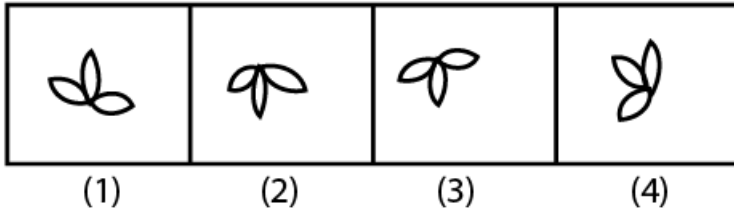
1 mm = 250km

$3.6mm = 250 \times 3.6$

=900km

Question 55

Choose the figure which is different from the rest there



- A 1
- B 2
- C 3
- D 4

Answer: A

RRB Free Videos (You Tube Channel)

Question 56

..... often referred to as shock treatment, is a psychiatric treatment in which seizures are electrically induced in patients to provide relief from psychiatric illnesses.

- A Electromyography (EMG)
- B Electrocardiogram (ECG)
- C Electroencephalography (EEG)
- D Electroconvulsive therapy (ECT)

Answer: D

Question 57

Find out the LCM of 3^5 , 3^{11} , 3^{-11} and 3^{14}

- A 3^5
- B 3^{11}
- C 3^{-11}
- D 3^{14}

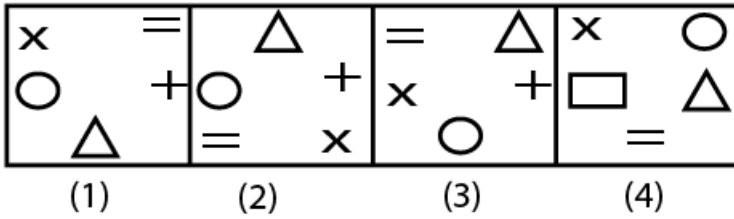
Answer: D

Explanation:

LCM of 3^5 , 3^{11} , 3^{-11} and $3^{14} = 3^{14}$

Question 58

Choose the figure which is different from the rest three.



- A 1
- B 2
- C 3
- D 4

Answer: D

20 RRB NTPC Mocks-Tests Rs.149

Question 59

What is the measure of temperature considered as normal in human body?

- A 95 degree F
- B 97 degree F
- C 98.6 degree F
- D 96.8 degree F

Answer: C

Question 60

Find $x - \sqrt{x} = 20$; Find the value of \sqrt{x}

- A 5
- B 6
- C 8
- D 7

Answer: A

Question 61

What is the present Personal Income Tax exemption limit for male individuals below 60 years of age & HUF (FY2015- 16)?

- A Rs. 2.5 lakhs
- B Rs. 3 lakhs
- C Rs. 1.5 lakhs

D Rs. 4 lakhs

Answer: A

10 RRB JE Mocks-Tests Rs.117

Question 62

..... is used to control the fission reaction rate in nuclear reactor as it absorbs neutron without itself getting into fissioning.

A Heavy water

B Graphite

C Water

D Calcium

Answer: D

Question 63

Insert the missing character marked as '?'.

3	15	4
7	38	5
3	?	5

A 15

B 18

C 19

D 20

Answer: B

Question 64

A man can row his boat at speed of 4 km/hr and he finds that the time taken rowing upstream is double to that taken downstream. Find the speed of the stream (in km/hr).

A 1.5

B 1.3

C 2

D 1

Answer: B

RRB General Science Notes (Download Pdf)

Question 65

Insert the missing character marked as 6?'

1	2	3
11	7	5
120	45	?

- A 19
- B 17
- C 16
- D 15

Answer: C

Question 66

Read the statements and select a conclusion from the given alternatives:

Statement: Some mats are brooms. All the pencils are brooms

Conclusion:

- I. Some brooms are pearls.
- II. Some brooms are mats.

- A Only I conclusion follows
- B Only II conclusion follows
- C Either I or II follows
- D Neither I nor II follows

Answer: B

Question 67

Read the statement and select a conclusion out of the given alternatives.

Statement: An industry worker has four children. No one else in the industry has four children.

- A All workers in the industry have four children each.
- B Everybody in the industry has children.
- C Some of the industry workers have more than four children.
- D Only one worker in the industry has exactly four children.

Answer: D

RRB GK Material (Download Pdf)

Question 68

Calculate the difference between the squares of the largest and smallest two-digit prime numbers.

- A 9298
- B 9892
- C 9292
- D 9288

Answer: D

Question 69

The average weight of 30 students in a class is 25 kgs. If the weight of the class teacher is added, the average weight increase by 2 kgs. The weight of the class teacher (in kgs) is:

- A 86
- B 84
- C 81
- D 87

Answer: D

Question 70

The huge storm known as Great red spot is associated with which planet?

- A Mars
- B Venus
- C Pluto
- D Jupiter

Answer: D

Join Competitive Exam Updates Telegram Group

Instructions

Read the information carefully and answer the following questions:

Six girls are sitting in a circle facing to the centre of the circle. They are Priya, Neha, Rashmi, Sonali, Tina and Veera. Tina is not between Neha and Sonali but some other one. Priya is next to the left of Veera. Rashmi is 4th to the right of Priya.

Question 71

Which one is sitting just right to Veera?

- A Priya
- B Tina
- C Rashmi
- D Sonali

Answer: B

Question 72

What is the position of Tina?

- A Just next to the right of Neha
- B Second to the left of Priya
- C Between Neha and Rashmi
- D To the immediate right of Veera

Answer: D

Question 73

If Priya and Rashmi interchange their positions then which of the following pair will sit together?

- A Rashmi & Tina
- B Priya & Veers
- C Veera & Tina
- D Neha & Veera

Answer: E

RRB NTPC Previous Papers (Download PDF)

Instructions

For the following questions answer them individually

Question 74

Read the statements and select a conclusion from the given alternatives:

Statement: Some doctors are kings.

All the kings are handsome.

Conclusion:

- I. All the doctors are handsome
- II. All the kings are doctors.

- A Only I conclusion follows
- B Only II conclusion follows
- C Either I or II follows
- D Neither I nor II follows

Answer: D

Question 75

Winner of 2015 "United Nations Champions of the Earth" award in the category Policy Leadership is

- A Sheikh Hasina
- B Paul Pohlman
- C Narendra Modi

D Barack Obama

Answer: A

Question 76

Manish, Mukesh and Sachin are Accountants. Mukesh can file a return in 5 hours and Sachin in 4 hours alone. All three together can do it in 2 hours. In what time (in hrs.) will Manish do the work?

A 15

B 20

C 17

D 10

Answer: B

RRB NTPC Free Mock Tests

Question 77

Who has recently been appointed as the Chief of New Development Bank of BRICS country, has also served as the chairman of Infosys Ltd., and was non- Executive chairman of ICICI Bank in the past?

A K.V.Kamath

B Nandan Nilekani

C Azim Premji

D Chanda Kochhar

Answer: A

Question 78

..... are atoms/molecules/ions containing the same number of electrons.

A Isotones

B Isotopes

C Isoelectronic

D Valence Isoelectronic

Answer: C

Question 79

Computer system which do not require any storage device?

A Analog

B Digital

C Hybrid

D Third generation computer

Answer: A

RRB JE Previous Papers (Download Pdf)

Question 80

Fertilisation of sperm with the ovum takes place in

- A Uterus
- B Cervix
- C Fallopian Tube
- D Ovary

Answer: C

Question 81

If in a certain language, TOGGLE is coded as OTGGEL, how is KEPLER coded in that code?

- A EEKLPR
- B PREEKL
- C RPEEKL
- D EKLPRE

Answer: D

Question 82

Read the statement and select a conclusion out of the given alternatives.

Statement. Movies convince viewers that the likelihood of their becoming the victim of a violent crime is extremely high; at the same time by their very nature, movies persuade viewers to passively accept whatever happens to them.

- A Movies viewing promotes criminal behaviour
- B Movies viewers are most likely to be victimized than others.
- C People should not watch movies.
- D Movies promote a feeling of helpless vulnerability in viewers

Answer: D

RRB JE Free Mock Test

Question 83

South West Monsoon generates in

- A Arabian Sea
- B Indian Ocean
- C Bay of Bengal

D Himalayas

Answer: B

Question 84

..... is the most electropositive and is most electronegative element of the third period of modern periodic table.

A Sodium, Potassium

B Magnesium, Aluminium

C Sodium, Chlorine

D Aluminium, Chlorine

Answer: C

Question 85

If 22, x, 88 are in a continued proportion, find the value of x.

A 22

B 33

C 44

D 36

Answer: C

Daily Free RRB Online Test

Question 86

Rajat is the brother of Sanjay and Manish is the father of Rajat. Jay is the brother of Shreya and Shreya is the daughter of Sanjay. Who is the uncle of Jay?

A Rajat

B Sanjay

C Manish

D cannot be determined

Answer: A

Question 87

P is the brother of Q. Q is the brother of R. P is the son of S. Based on these three statements, which of the following statements cannot be definitely true?

A Q is the brother of P.

B Q is the son of S.

C P is the brother of R

D S is the father of Q.

Answer: D

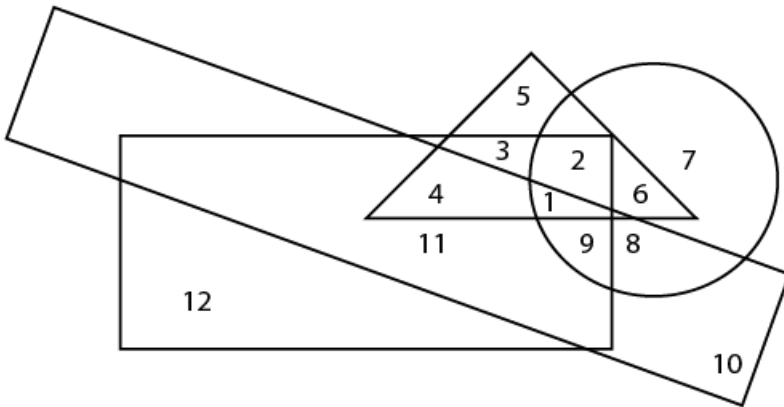
Explanation:

S + - male
| -- Female
 $P^+ \cdot Q^+ \cdot R$

Instructions

Study the figure carefully and answer the questions that follow:

In the following figure the circle stands for unemployed, the smaller rectangle stands for lazy, the triangle stands for urban and the larger rectangle stands for foolish.



Question 88

The number of non-urban, unemployed people who are neither foolish nor lazy are

- A 12
- B 11
- C 10
- D 7

Answer: D

RRB Group-D Previous Papers

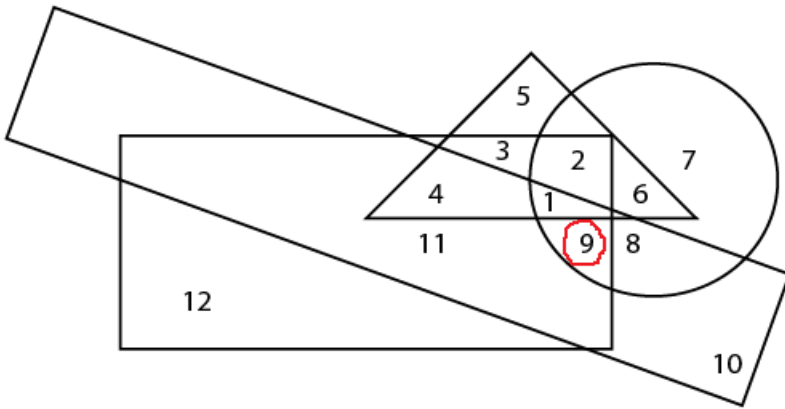
Question 89

The number of non-urban, unemployed, lazy and foolish people are

- A 8
- B 9
- C 10
- D 11

Answer: B

Explanation:



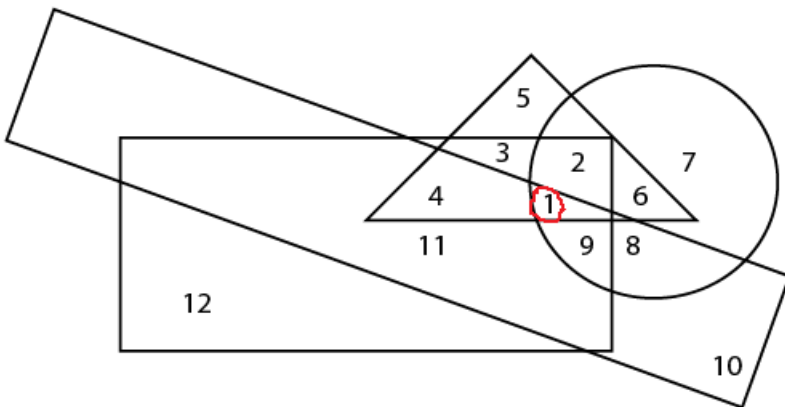
Question 90

The number of Unemployed, lazy, urban and foolish people are

- A 9
- B 2
- C 1
- D 3

Answer: C

Explanation:



The number of Unemployed, lazy, urban and foolish people are 1.

Instructions

For the following questions answer them individually

Question 91

What is the local name given to the parliament of Pakistan?

- A Majilis
- B Majlis-e-Shoora
- C Saeima-e-majilis
- D Jatia Parliament

Answer: B

Question 92

Which state of India has the largest number of cotton mills?

- A Karnataka
- B Uttar Pradesh
- C Maharashtra
- D Gujarat

Answer: C

Question 93

Find the maximum area of a rectangular field which is surrounded by a rope of 100 meters?

- A $500m^2$
- B $625m^2$
- C $400m^2$
- D $100m^2$

Answer: B

Explanation:

Perimeter of rectangle = 100

$$2(l+b) = 100$$

$$(l+b) = 50$$

For maximum area we have to take length and breadth equal to 25

$$\text{Area} = 25 \times 25 = 625 \text{ square metre.}$$

Question 94

On the basis of Memory size & performance, which type of computer is known as "Big iron"?

- A Micro Computer
- B Mini Computer
- C Main Frame
- D Super Computer

Answer: C

20 RRB NTPC Mocks-Tests Rs.149

Question 95

If 90% of A = 30% of B and B= x% of A, find x.

- A 600
- B 900

- C 300
D 1200

Answer: C

Explanation:

90% of A = 30% of B

$$\frac{90}{100}A = \frac{30}{100}B$$

$$3A = B$$

Now,

B = x% of A

$$3A = \frac{x}{100} \times A$$

$$x = 300.$$

Question 96

Which of the following fractions is largest?

- A $\frac{3}{4}$
B $\frac{4}{5}$
C $\frac{5}{6}$
D $\frac{7}{8}$

Answer: D

Explanation:

$$\frac{3}{4} = 0.75$$

$$\frac{4}{5} = 0.80$$

$$\frac{5}{6} = 0.83$$

$$\frac{7}{8} = 0.87$$

$\frac{7}{8}$ is the largest.

Question 97

The Value of $\sin 60$ is:

- A $\sqrt{1/2}$
B $\sqrt{3/2}$
C $1/\sqrt{2}$
D $\sqrt{1/\sqrt{2}}$

Answer: B

Explanation:

$$\sin 60 = \sqrt{3/2}.$$

Question 98

Which of the following hormone is not secreted by Pituitary gland?

- A Thyroid-stimulating hormone (TSH).
- B Prolactin
- C Vasopressin
- D Somatostatin

Answer: D

Question 99

A, B and C are employed to complete a work in Rs. 784. If A and B together complete $\frac{23}{28}$ of the work Calculate the wages (in Rs.) paid to C?

- A 280
- B 140
- C 70
- D 56

Answer: B

Explanation:

Let the total work = 28 units

23 units of work done by A and B

So, 5 units of work done by C

$$\text{Wages of C} = \frac{784}{28} \times 5 = 140.$$

Question 100

Find the value of $200 \times 20 \times 2 \times 0.2 \times 0.02 \times 0.002=?$

- A 0.064
- B 0.64
- C 64
- D 640

Answer: A

Explanation:

$$200 \times 20 \times 2 \times 0.2 \times 0.02 \times 0.002$$

$$8000 \times 0.2 \times 0.02 \times 0.002$$

$$0.064.$$

[RRB General Science Notes \(Download Pdf\)](#)

[RRB NTPC Previous Papers \(Download PDF\)](#)

RRB NTPC Free Mock Tests

RRB JE Previous Papers (Download Pdf)

RRB JE Free Mock Test

Daily Free RRB Online Test

RRB Group-D Previous Papers

RRB Free Videos (You Tube Channel)

20 RRB NTPC Mocks-Tests Rs.149

10 RRB JE Mocks-Tests Rs.117

RRB General Science Notes (Download Pdf)

RRB GK Material (Download Pdf)

Join Competitive Exam Updates Telegram Group