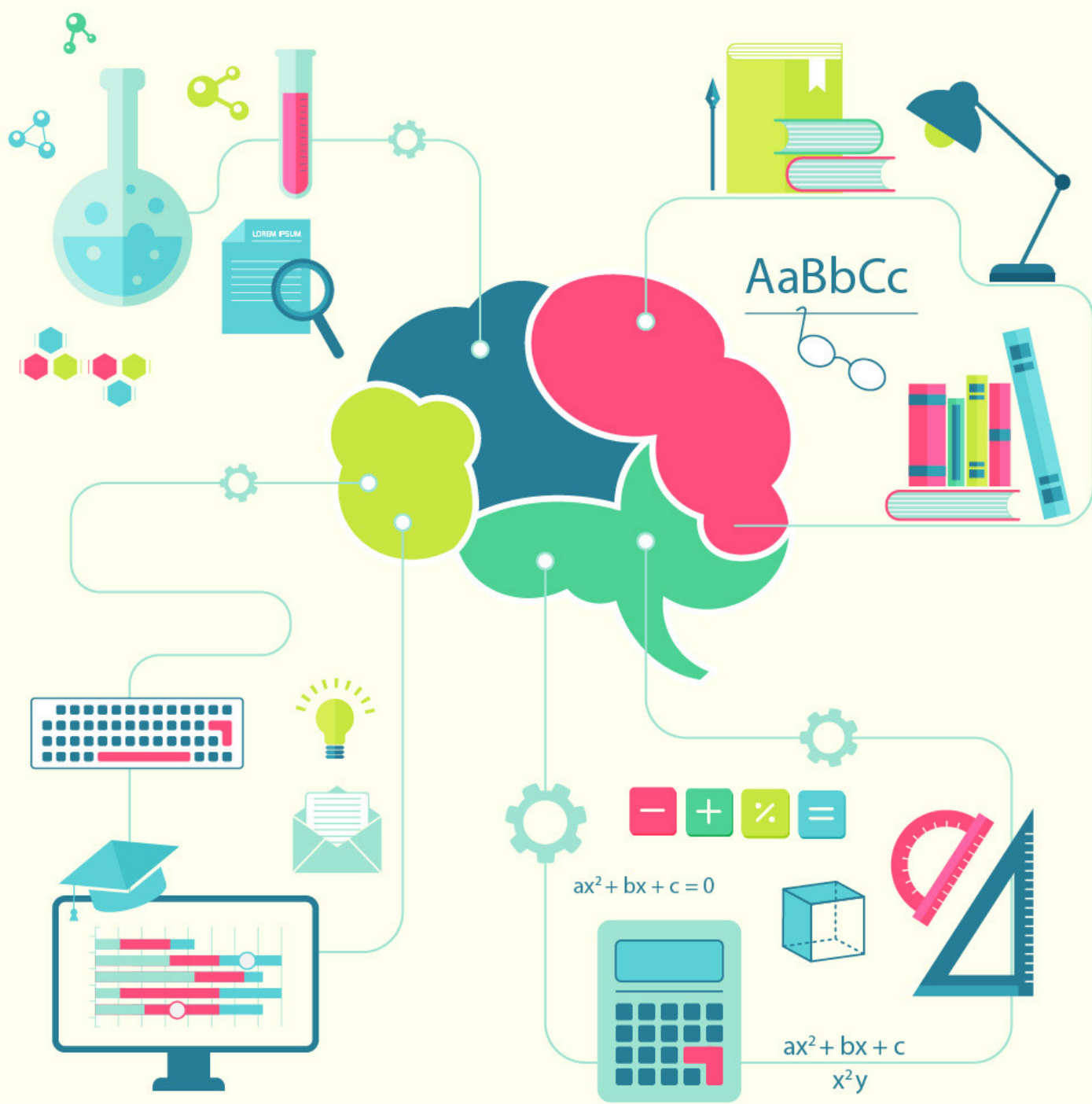


# cracku

## Chemistry Important Questions for Railway Exam

07 March 2018





# TAKE CRACKU'S FREE RRB ALP MOCK

**Question 1:** Deuterium, the oxide of which is also called Heavy Water, is an Isotope of which of the following elements?

- a) Carbon
- b) Helium
- c) Oxygen
- d) Hydrogen

**Question 2:** Why do the chips manufacturers fill nitrogen into the plastic bags ?

- a) To prevent chips from Oxidation
- b) To prevent chips from Reduction
- c) To increase the size
- d) To increase the cost

**Question 3:** When a substance loses oxygen during a reaction then it is said to be ?

- a) Oxidised
- b) Deoxidised
- c) Reduced
- d) None of the above

**Question 4:** Which of the following non metal lies in liquid state at room temperature?

- a) Chlorine
- b) Iodine
- c) Astatine
- d) Bromine

**RRB ALP recruitment notification 2018 - Apply  
online - Loco pilot & Technician Vacancies**



# SOLVE PAST RRB ALP PAPERS

**Question 5:** Which of the following Oxides are responsible for the Acid Rain?

- a) Calcium Oxide and Silicon Dioxide
- b) Iron Oxide and Zinc Oxide
- c) Carbon dioxide and Aluminium Oxide
- d) Sulphur Dioxide and Nitrogen Dioxide

**Question 6:** The 'p' in PH standards for?

- a) Potenz
- b) Potential
- c) Polymerization
- d) Perception

**Question 7:** Which of the following is a strong acid?

- a) Sulphuric acid
- b) Nitric acid
- c) Hydrochloric acid
- d) All of the above

**Question 8:** What is the chemical name of Marsh Gas?

- a) Methane
- b) Propylene
- c) Cuprous Oxide
- d) Calcium Hydroxide

**Latest Railway Recruitment  
2018 Jobs Vacancy**

**HIGHLY RATED RAILWAYS APP**





# TAKE CRACKU'S FREE RRB ALP MOCK

**Question 9:** Suffocation in closed rooms with wood, coal or coke fires is due to the formation of which of the following gases?

- a) Silicon Dioxide
- b) Carbon Dioxide
- c) Carbon Monoxide
- d) Nitrogen Dioxide

**Question 10:** What is the Chemical name of Plaster of Paris?

- a) Calcium Sulphate
- b) Zinc Sulphate
- c) Ferrous Sulphate
- d) Copper Sulphate

**Solutions:**

- 1) Answer (d)
- 2) Answer (a)
- 3) Answer (c)
- 4) Answer (d)
- 5) Answer (d)
- 6) Answer (a)
- 7) Answer (d)
- 8) Answer (a)
- 9) Answer (c)
- 10) Answer (a)

**Important General Knowledge for all  
Railways Exams**

**HIGHLY RATED RAILWAYS APP**

