



SSC CGL 2011 Tier 1 - Shift 1

All rights reserved. No part of this publication may be reproduced, distributed, or transmitted in any form or by any means, electronic, mechanical, photocopying, recording or otherwise, or stored in any retrieval system of any nature without the permission of cracku.in, application for which shall be made to support@cracku.in

Reasoning

Instructions

Directions: In each of the following questions select the related letters/word/number from the given alternatives.

Question 1

CFIL:ORUX::GDJM:?

- A HJLN
- B NQST
- C PSVY
- D RTVX

Answer: C

Explanation:

Letters of sets of words are 2 ahead from their previous one.
Only option C follows this pattern.

SSC CGL Free Mock Test

Question 2

BEHK:YVSP::DGJM:?

- A JGDA
- B ROLI
- C WTQN
- D ZWTQ

Answer: C

Explanation:

As we can see sum of first letter should remain constant on both of the proportionate side
 $B+Y=27$
Hence $D+W=27$

Question 3

24:60::120:?

- A 160
- B 220
- C 300
- D 108

Answer: C

Explanation:

$24 \times 2.5 = 60$
Required number = $120 \times 2.5 = 300$

Question 4

392:28::722:?

- A 18
- B 28
- C 38
- D 48

Answer: C

Explanation:

$$392 = (14)^2 \times 2$$

$$28 = 14 \times 2$$

$$722 = 19^2 \times 2$$

Hence next number will be $19 \times 2 = 38$

125 SSC CGL Mocks for just Rs. 199

Question 5

123:36::221:?

- A 52
- B 69
- C 72
- D 25

Answer: D

Explanation:

$$36 = (3 + 2 + 1)^2$$

Hence missing number will be $(2 + 2 + 1)^2$

Question 6

Timid:Ass::Cunning:?

- A Ant
- B Fox
- C Rabbit
- D Horse

Answer: B

Explanation:

An ass (donkey) is a timid animal and a fox is a cunning animal. So, timid : ass :: cunning : fox

Question 7

Ecstasy:Gloom::?

- A Congratulations:Occasion

- B Diligent:Successful
- C Measure:Scale
- D Humiliation:Exaltation

Answer: D

Explanation:

Ecstasy and gloom are opposites of each other. Similarly, humiliation and exaltation are opposites of each other. So, the answer is option d)

SSC CGL Previous Papers (DOWNLOAD PDF)

Question 8

Architect:Building::Sculptor:?

- A Museum
- B Stone
- C Chisel
- D Statue

Answer: D

Explanation:

An architect builds a building and a sculptor sculpts a statue. So, option d) is the best answer

Question 9

MKQO:LNPR::? XVTZ

- A YSUW
- B SVWY
- C VTWY
- D WYTS

Answer: A

Explanation:

It is clear from the given set of alphabets that 1st letter of 1st set is one ahead of 1st letter of second set.

Similarly for 3rd set 1st will be one ahead from the 1st letter of fourth set.

Hence 1st letter of missing set will be Y

So answer will be A)

Instructions

Directions:In each of the following questions, find the odd number/letters/word from the given alternatives.

Question 10

- A PQSU
- B BCQN
- C ABDF
- D MNPR

Answer: B

Explanation:

Among all options A) , C) ,D) follows a pattern where 3rd letter is one ahead of its previous one and 4th letter is one ahead from its previous one
But this is not followed by option B)
Hence answer will be B)

25 SSC CHSL Mocks for just Rs. 149

Question 11

- A ABYZ
- B CDWX
- C EFUV
- D GHTV

Answer: D

Explanation:

As we can see option A,B and C follows a pattern described below:

A) ABYZ= first two letter and last two letter have same order but in reverse alphabetically similarly B) and C) follows but not D) option. Hence answer will be D)

Question 12

- A 626
- B 841
- C 962
- D 1090

Answer: B

Explanation:

All the other numbers except 841 are even numbers. So, option b) is the correct answer.

Question 13

- A 5720
- B 6710
- C 2660
- D 4270

Answer: D

Explanation:

Among all given options, in option A, B and C sum of digit is same i.e. 14
But not in D.
Hence answer will be D

SSC CGL Tier-2 Previous Papers PDF

Question 14

- A Swimming
- B Sailing
- C Diving
- D Driving

Answer: D

Explanation:

First three options are related with water sports whether D is not. Hence answer will be D

Question 15

- A Perception
- B Discernment
- C Penetration
- D Insinuation

Answer: C

Explanation:

Option A,B and D are related to emotions whether not C. Hence answer will be C.

Instructions

Directions: In the following question from among the given alternative select the one in which the set of numbers is most like the set of number given in the questions. Give Set: (4, 25, 81)

Question 16

- A (4, 36, 79)
- B (9, 48, 81)
- C (16, 64, 100)
- D (9, 49, 143)

Answer: C

Explanation:

Given set has square of numbers 2,4,9 respectively. Only option C has square of numbers in set, hence it will be the answer.

SSC CGL Important Questions PDF

Question 17

In the following question, number of letters are skipped in between by a particular rule. Which of the following series observes the rule?

- A BAFHTU
- B ACEGJL
- C ACFJOU

D ADFHJL

Answer: C

Explanation:

Among all the options only option C follows a rule where every next letter is ahead with an increasing rate as 1,2,3,4,5 i.e. second letter is 1 ahead of A
Third letter is 2 ahead of C
Fourth letter is 3 ahead of F and so on.

Instructions

Directions: In the following question, which one of the given response would be a meaningful order of the following?

Question 18

(1) Ocean (2) Rivulet (3) Sea (4) Glacier (5) River

A 5,2,3,1,4

B 4,2,5,3,1

C 5,2,3,4,1

D 4,2,1,3,5

Answer: B

Explanation:

As we know that in dictionary, position of every letter in a word remain in alphabetical order with the same position letter of another word.

Hence order will be GLACIER, RIVULET, RIVER, SEA, OCEAN

Instructions

Directions: Arrange the following words as per order in the dictionary.

Question 19

(1) Preposition (2) Preperatively (3) Preposterous (4) Preponderate (5) Prepossess

A 2,4,1,5,3

B 1,5,2,4,3

C 5,4,2,3,1

D 4,2,5,1,3

Answer: A

Explanation:

As we know that in dictionary, position of every letter in a word remain in alphabetical order with the same position letter of another word.

Hence order will be 2,4,1,5,3

1500 + Free Must Solved SSC Questions (With Solutions)

Instructions

For the following questions answer them individually

Question 20

Which one of set of letters when sequentially placed at the gaps in the given letter series shall complete it?

ac__cab__baca__aba__aca__

- A acbcc
- B aacbc
- C babbb
- D bcbba

Answer: B

Explanation:

In given series of letters, after filling the gaps with options only option B is making a pattern of "acac" and "abab"
Hence answer will be B

Instructions

Directions: In each of the following questions, a series is given, with one/two term(s) missing. Choose the correct alternative from the given ones that will complete the series.

Question 21

._?_DREQ, GUHT, JXKW

- A EFRS
- B TGSF
- C JWVI
- D AOBN

Answer: D

Explanation:

According to given set of alphabets, every first letter of next set is 2 ahead of its previous set
And following this pattern first letter of missing set will be 2 before D i.e.A
Hence only D option is justifying the pattern.

Question 22

56, 90, 132, 184, 248, _?_

- A 368
- B 316
- C 362
- D 326

Answer: D

Explanation:

Given series follows a pattern described as below:

$$90 = 56 + 34$$

$$132 = 90 + 34 + 8$$

$$184 = 132 + 34 + (8 + (8 + 2))$$

$$248 = 184 + 34 + (8 + (8 + 2)) + (8 + 2 + 2)$$

Hence next number will be:

$$326 = 248 + 34 + (8 + (8 + 2)) + (8 + 2 + 2) + (8 + 2 + 2 + 2)$$

General Science Notes for SSC CGL

Question 23

0, 4, 8, 24, 64, 176, __?__

- A 180
- B 480
- C 280
- D 300

Answer: B

Explanation:

Given series follows a pattern described as below:

$$8 = (0+4) \times 2$$

$$24 = (4+8) \times 2$$

$$64 = (24+8) \times 2$$

$$176 = (64+24) \times 2$$

Hence next will be $(176+64) \times 2 = 480$

Question 24

WTPMIFB __?__?__

- A ZV
- B XU
- C YU
- D YV

Answer: C

Explanation:

Given series is formed with a difference of 2 letters and 3 letters in reverse alphabetical order respectively.

Hence W(VU)T(SRQ)P(ON)M(LKJ)I(HG)F(EDC)B(AZ)Y(XWV)U

So answer will be YU

Instructions

For the following questions answer them individually

Question 25

Mrs. Sushella celebrated her wedding anniversary on Tuesday, 30th September 1997. When will she celebrate her next wedding anniversary on the same day?

- A 30 September 2003
- B 30 September 2004
- C 30 September 2002
- D 30 October 2003

Answer: A

Explanation:

In every next year, next day will come on same date except in leap year, it will be ahead by 2 days in a leap year.

Hence date of anniversary again on tuesday will be on 30th september 2003.

Free SSC Study Material (18,000 Solved Questions)

Question 26

A clock gains five minutes every hour. What will be the angle traversed by the second hand in one minute?

- A 360°
- B 360.5°
- C 390°
- D 380°

Answer: C

Explanation:

This clock moves 65 minutes for every 60 minutes.

=> Each hand moves = $\frac{65}{60}$ as far as it should.

A correct second hand moves 360° in one minute.

=> This second hand moves = $\frac{65}{60} \times 360^\circ = 390^\circ$ in one minute.

=> Ans - (C)

Question 27

B is twice as old as A but twice younger than F. C is half the age of A but is twice older than D. Who is the second oldest?

- A B
- B F
- C D
- D C

Answer: A

Explanation:

According to given question order of ages will be F,B,A,C,D.

Question 28

A two member committee comprising of one male and one female member is to be constituted out of five males and three females. Amongst the females, Ms. A refuses to be a member of the committee in which Mr. B is taken as the member. In how many different ways can the committee be constituted?

- A 11
- B 12
- C 13
- D 14

Answer: D

Explanation:

According to given question, No. of ways to make this committee = Total ways of selecting male and female - 1 way when we select B and A

i.e. $5 \times 3 - 1$
 $= 14$

SSC Exam Free Videos (Youtube)

Question 29

Find the wrong number in the series. 6, 12, 21, 32, 45, 60

- A 6
- B 12
- C 21
- D 32

Answer: A

Explanation:

Given series after second number, is increasing with an increasing rate of 9, 11, 13, 15
We can see that its rate has a constant increasing rate of 2.
So accordingly first number should be 7 not 6.

Question 30

Ramesh ranks 13th in a class of 33 students. There are 5 students below Suresh rankwise. How many students are there between Ramesh and Suresh?

- A 12
- B 14
- C 15
- D 16

Answer: B

Explanation:

According to given question Suresh's rank will be 28
And Ramesh's rank is 13
Hence there will be students between them from rank 14 to 27 i.e. total 14 students

Question 31

Naresh's age is 4 years less than twice the age of his brother. Which of the following represents the equation to find his age?

- A $2x + 4$
- B $4x + 2$
- C $x - 4$
- D $2x - 4$

Answer: D

Explanation:

It will be $2x - 4$ considering x as Naresh's brother age.

Question 32

Suresh's sister is the wife of Ram. Ram is Rani's brother. Ram's father is Madhur. Sheetal is Ram's grandmother. Rema is Sheetal's daughter-in-law. Rema is Sheetal's daughter-in-law. Rohit is Rani's brother's son. Who is Rohit to Suresh?

- A Brother-in-law
- B Son
- C Brother
- D Nephew

Answer: D

Explanation:

Suresh will be Ram's brother-in-law and since Ram is brother of Rani and Rohit is Rani's brother's son, Hence Rohit will be nephew to Suresh.

Question 33

In a survey, 70% of those surveyed owned a car and 75% of those surveyed owned a TV. If 55% owned both a car and a TV, what percent of those surveyed did not own either a car or a TV?

- A 25%
- B 20%
- C 10%
- D 5%

Answer: C

Explanation:

Let's assume survey is done on a total number of 100.

Hence one's having a car = 70

Having a TV = 75

Having both = 55

Hence people who have a car or a TV will be $70+75-55=90$

People who don't have any = $100-90 = 10$

Question 34

If DANCE is coded as GXQZH then how will RIGHT be coded?

- A UFJEW
- B SGKFX
- C UFJWE
- D UFWJE

Answer: A

Explanation:

First letter of DANCE is coded with a letter 2 ahead from it as G and last letter E is coded with a letter 2 ahead from it as H.

Similarly for the word RIGHT, R will be coded with as U and T will be coded as W.

Only option A is satisfying this pattern.

Question 35

If LOSE is coded as 1357 and GAIN is coded as 2468, what do the figures 84615 stand for?

- A NAILS
- B SNAIL
- C LANES
- D SLAIN

Answer: A

Explanation:

According to coding of LOSE and GAIN
8-N, 4-A, 1-6, L-1, S-5
Hence 84615 will be NAILS.

Question 36

A statement is given followed by four alternative arguments. Select the alternative which is most appropriate.

Statements: Is it necessary that education should be job oriented?

Arguments:

- I. Yes, the aim of education is to prepare person for earning.
- II. Yes, educated person should stand on his own feet after completion of education.
- III. No, education should be for sake of knowledge only.
- IV. No, one may take up agriculture where education is not necessary.

- A Only I and II arguments are strong
- B Only III and IV argument are strong
- C Only I argument is strong
- D Only I and III arguments are strong

Answer: A

Explanation:

Only arguments 1 and 2 sound more strong regarding the statement than any other hence option A will be the answer.

Question 37

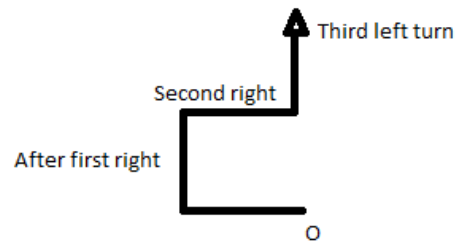
A man started walking West. He turned right, then right again and finally turned left. Towards which direction was he walking now?

- A North
- B South
- C West
- D East

Answer: A

Explanation:

As we can see from the given diagram below that, at the end he will be heading towards north. (Where O can be taken as starting point)



SSC CGL Free Online Coaching

Question 38

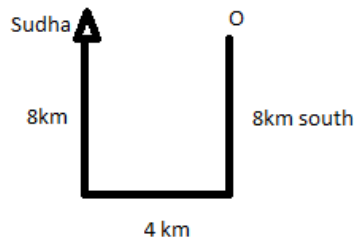
Sudha travels 8 km to the South. Then she turns to the right and walks 4 km. Then again she turns to her right and moves 8 km forward. How many km away is she from the starting point?

- A 7
- B 6
- C 4
- D 8

Answer: C

Explanation:

As we can see described in the diagram below sudha is 4 km. away from starting point. (Where O is starting point)



Question 39

From the given alternative words, select the word which cannot be formed using the letters of the given words:
COMPREHENSION

- A MUTUAL
- B LIMITATION
- C ONION
- D PREACH

Answer: D

Explanation:

Among all options only PREACH can't be formed from the word COMPREHENSION as A couldn't be available in the word COMPREHENSION.

Question 40

From the given alternative words, select the word which can be formed using the letters of the given word:
MULTIPLICATION

- A MUTUAL
- B LIMITATION
- C APPLICATION
- D NOTION

Answer: B

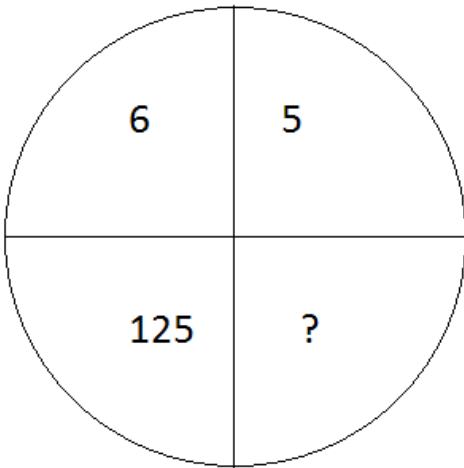
Explanation:

As among all options only word LIMITATION can be formed as in MUTUAL, 2 U couldn't be available from MULTIPLICATION. In APPLICATION 2 P couldn't be available from word MULTIPLICATION. In NOTION 2 N couldn't be available in word MULTIPLICATION.

Instructions

Directions: In each of the following questions, select the missing number from the given response.

Question 41



A 127

B 31

C 216

D 328

Answer: C

Explanation:

On the diagonal side of 5, it is 5^3 hence on the diagonal side of 6, it will be 6^3

Question 42

2	1	2
21	22	?
1	2	5
20	23	43

A 40

B 48

C 50

D 36

Answer: A

Explanation:

In given square there is a pattern column wise as described below:

$20+2=21+1$
 $23+1=22+2$
 $43+2=5+$ Missing number
Hence missing number will be 40

Instructions

For the following questions answer them individually

Question 43

If '-' stands for division '+' stands for subtraction, '÷' stands for multiplication, '×' stands for addition, then which one of the following equations is correct?

A $70 - 2 + 4 \div 5 \times 6 = 44$

B $70 - 2 + 4 \div 5 \times 6 = 21$

C $70 - 2 + 4 \div 5 \times 6 = 341$

D $70 - 2 + 4 \div 5 \times 6 = 36$

Answer: B

Explanation:

According to changed signs option B balances rightly as:

$$70 \div 2 - 4 \times 5 + 6 = 21$$

Free SSC Study Material (18,000 Solved Questions)

Question 44

The school result is increasing year after year. Forecast the result of 2012 from the following information.

Year	2006	2007	2008	2009	2010	2011	2012
Result	34.25%	36.75%	39.75%	43.25%	47.25%	51.75%	?

A 51.75%

B 56.75%

C 48.00%

D 57.25%

Answer: B

Explanation:

Given statistics of result follows a pattern described as below:

$$34.25+2.5=36.75$$

$$36.75+2.5+.5= 39.75$$

$$39.75+2.5+.5+.5=43.25$$

$$43.25+2.5+.5+.5+.5=47.25$$

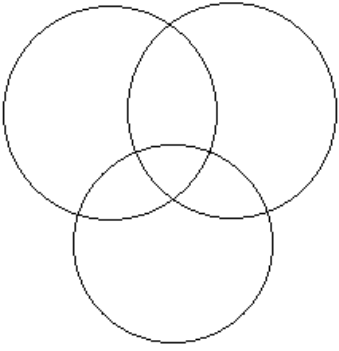
$$47.25+2.5+.5+.5+.5+.5=51.75$$

$$\text{Hence in 2012 it will be } 51.75+2.5+.5+.5+.5+.5+.5=56.75$$

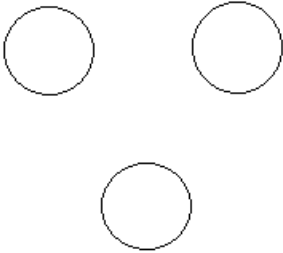
Question 45

Which diagram correctly represents the relationship between politicians, poets and women?

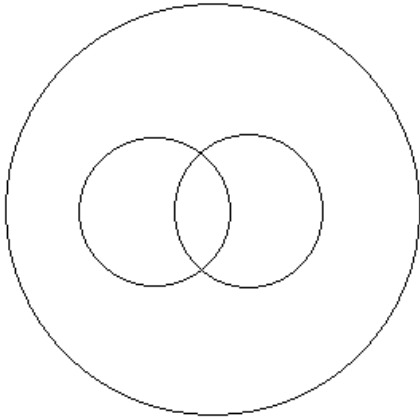
A



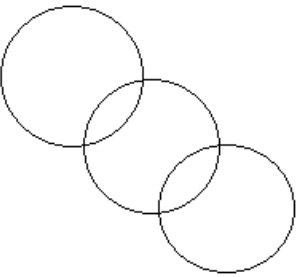
B



C



D



Answer: A

Explanation:

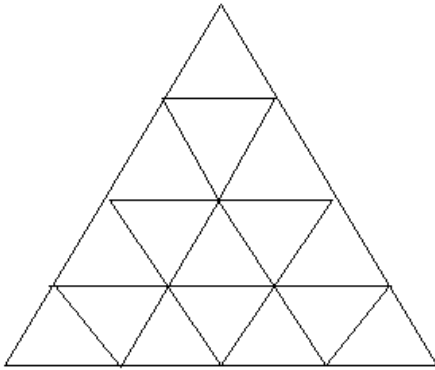
Only option A is depicting all possible sets of poet, politicians and women.

As option B,C and D don't have a possibility where a person is poet, politician and women all together.

So answer will be A.

Question 46

How many triangles are there in the following figures?



A 29

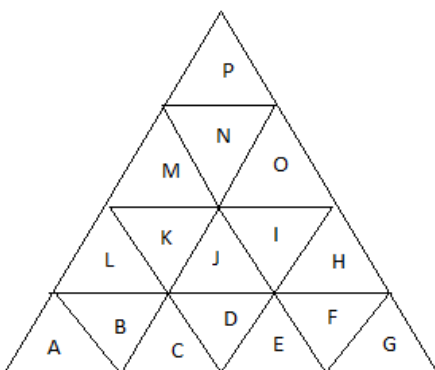
B 27

C 23

D 30

Answer: B

Explanation:



Triangles are:

Containing no triangles = A,B,C,D,E,F,G,H,I,J,K,L,M,N,O,P = 16

Containing 4 small triangles = ABCH, DJIK, EFGL, MHIJ, JKOL, MNOP, JCDE = 7

Containing 9 small triangles = MHIJABCDE, OJKLCDEFG, PMNOHIJKL = 3

Containing all triangles = 1

Total = 27

Question 47

Some equations are solved on the basis of a certain system. Find the correct answer for the unsolved equation on that basis. If $324 \times 289 = 35$, $441 \times 484 = 43$, $625 \times 400 = 45$, find the value of 256×729 .

- A 33
- B 35
- C 43
- D 34

Answer: C

Explanation:

Given system follows a pattern described as below:

$$18^2 \times 17^2 = (18 + 17) = 35$$

$$21^2 \times 22^2 = (21 + 22) = 43$$

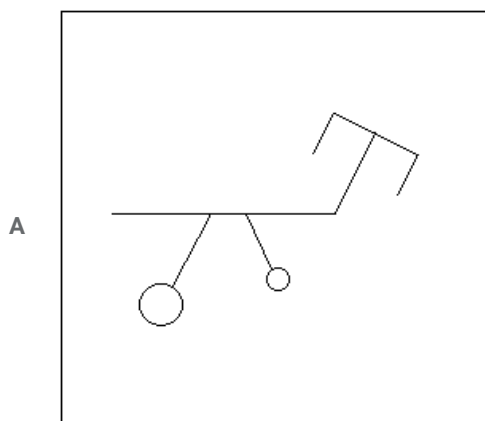
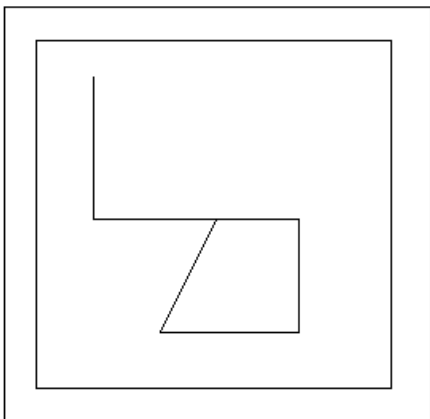
$$25^2 \times 20^2 = (25 + 20) = 45$$

$$\text{Hence for } 256 \times 729 = 16^2 \times 27^2 = (16 + 27) = 43$$

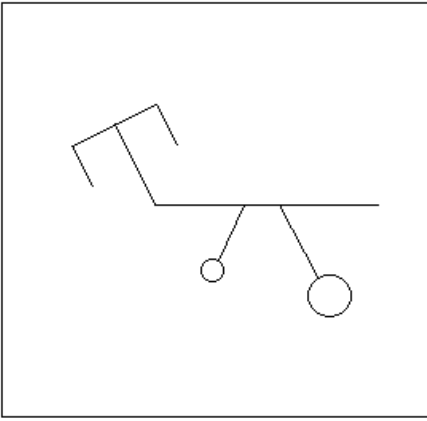
Instructions

Directions: From the given answer figures, select the one in which the question figure is hidden/embedded.

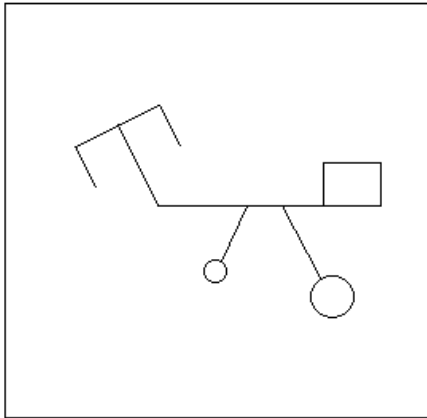
Question 48



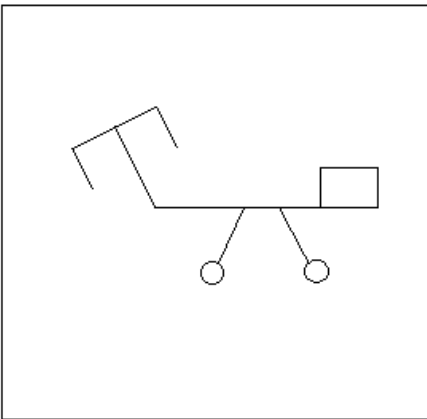
B



C



D

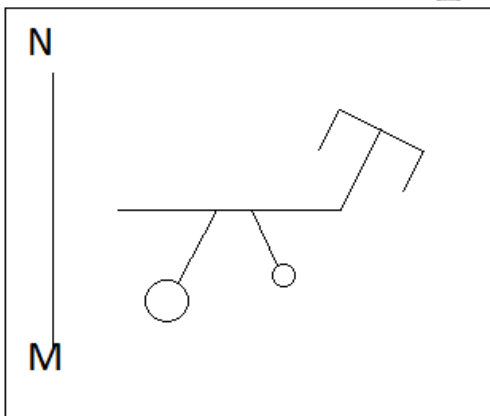


Answer: D

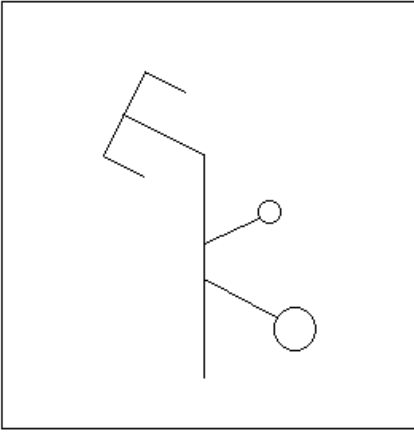
Instructions

Directions: If a mirror is placed on the line MN, then which of the answer figures is the correct image of the given question figure?

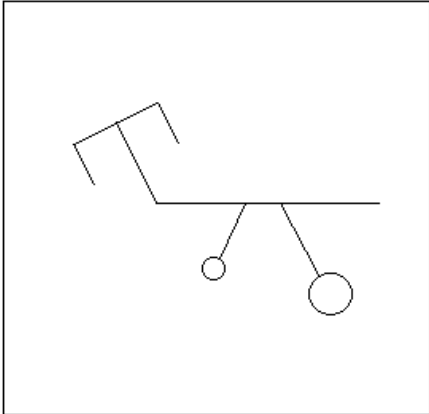
Question 49



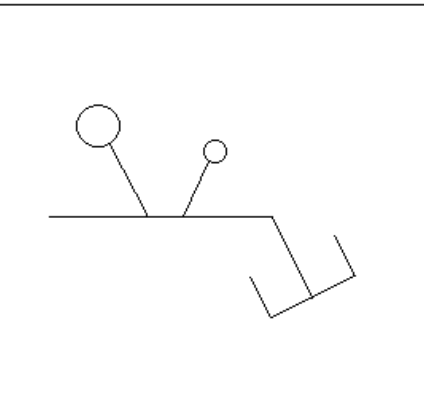
A



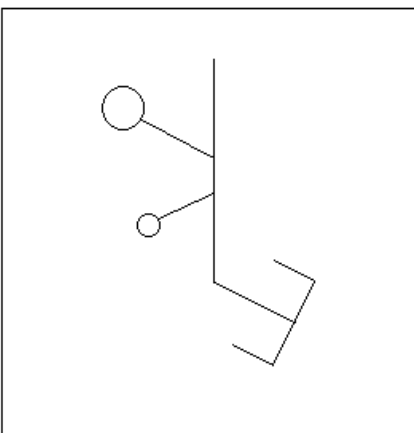
B



C



D



Answer: B

Explanation:

In mirror images, points remain at same distance from mirror on both sides and right part appear left and vice versa. So answer will be B

Join SSC Daily Quiz Telegram Group

Instructions

For the following questions answer them individually

Question 50

Which number comes next 1,3,7,15,31,?

- A 61
- B 59
- C 62
- D 63

Answer: D

Explanation:

Given series has a pattern described as below:

$$3=1+2$$

$$7=3+2*2$$

$$15=7+2*2*2$$

$$31=15+2*2*2*2$$

hence next number will be $31+2*2*2*2*2=63$

SSC CGL Free Mock Test

General Awareness

Instructions

For the following questions answer them individually

Question 51

In the budget for 2011-2012, the fiscal deficit (% of GDP) for 2011-2012 has been projected at

- A 5.1
- B 5.0
- C 4.6
- D 3.4

Answer: C

125 SSC CGL Mocks for just Rs. 199

Question 52

Which Fundamental Right was described by Dr. B.R. Ambedkar as the "heart and soul" of the Constitution?

- A Right to Equality
- B Right against Exploitation
- C Right to Constitutional Remedies
- D Rights to Freedom of Religion

Answer: C

Question 53

Which is not the concern of the local government?

- A Public Health
- B Sanitation
- C Law and order
- D Public Utility Services

Answer: C

Question 54

In India, the concept of single citizenship is adopted from

- A Britain
- B U.S.A.
- C Canada
- D France

Answer: A

SSC CGL Previous Papers (DOWNLOAD PDF)

Question 55

Who had proposed partyless democracy in India

- A Jaya Prakash Narayan
- B Mahatma Gandhi
- C Vinoba Bhave
- D S.A.Dange

Answer: A

Question 56

Disinvestment in Public Sector is called

- A Liberalisation
- B Globalisation
- C Industrialisation
- D Privatisation

Answer: D

Question 57

"Darwin finches" refers to which group?

- A Fishes
- B Lizards
- C Birds
- D Amphibians

Answer: C

25 SSC CHSL Mocks for just Rs. 149

Question 58

An individual's actual standard of living can be assessed by

- A Gross National Income
- B Net National Income
- C Per Capita Income
- D Disposable Personal Income

Answer: D

Question 59

As announced by the Finance Minister in his Budget speech on 28th February 2011, with a view to assist States in modernising their stamp and registration administration, E-stamping is expected to be rolled out in all the districts of different States in a period of

- A one year
- B two year
- C three year
- D five year

Answer: C

Question 60

Which Sikh Guru called himself the "Sachcha Badshah"?

- A Guru Gobind Singh
- B Guru Hargovind
- C Guru Tegh Bahadur
- D Guru Arjun Dev

Answer: B

Question 61

The Civil Disobedience Movement was launched by Mahatma Gandhi in

- A 1928
- B 1930
- C 1931
- D 1922

Answer: B

Question 62

What is the maximum strength prescribed for State Legislative Assemblies?

- A 350
- B 600
- C 500
- D 750

Answer: C

Question 63

Fa-hien visited India during the reign of which ruler?

- A Chandragupta II
- B Samundragupta
- C Ramagupta
- D Kumaragupta

Answer: A

SSC CGL Important Questions PDF

Question 64

At which place in Bengal was the East India Company given permission to trade and build a factory by the Mughals in 1651?

- A Calcutta
- B Cassim Bazar
- C Singur
- D Burdwan

Answer: B

Question 65

Diu is an island off

- A Daman
- B Goa
- C Gujarat
- D Maharashtra

Answer: C

Question 66

Which from the following is a land-locked sea?

- A Red Sea
- B Timor Sea
- C North Sea
- D Aral Sea

Answer: D

1500 + Free Must Solved SSC Questions (With Solutions)

Question 67

Shivasamudram Falls is found in the course of which river?

- A Krishna
- B Godavari
- C Cauvery
- D Mahanandi

Answer: C

Question 68

Who gave the slogan "Inquilab Zindabad"?

- A Chandrashekhar Azad
- B Subhash Chandra Bose
- C Bhagat Singh
- D Iqbal

Answer: C

Question 69

The position of India Railways network in the world is

- A second
- B third

- C fourth
- D fifth

Answer: C

General Science Notes for SSC CGL

Question 70

The oldest international airline is

- A Dutch. KLM
- B Air Canada
- C Qantas Airways
- D Air Sahara

Answer: A

Question 71

Which of the following can be used to absorb neutrons to control the chain reaction during nuclear fission?

- A Boron
- B Heavy water
- C Uranium
- D Plutonium

Answer: D

Question 72

Hydrogen bomb is based on the principle of

- A controlled fission reaction
- B uncontrolled fission reaction
- C controlled fusion reaction
- D uncontrolled fusion reaction

Answer: D

Free SSC Study Material (18,000 Solved Questions)

Question 73

Troposphere is the hottest part of the atmosphere because

- A it is closest to the Sun
- B there are charged particles in it
- C it is heated by the Earth's surface

D heat is generated in it

Answer: C

Question 74

The outermost layer of the Sun is called

A Chromosphere

B Photosphere

C Corona

D Lithosphere

Answer: C

Question 75

Where was India's computer installed?

A Indian Institute of Technology, Delhi

B Indian Institute of Science, Bangalore

C Indian Iron & Steel Co. Ltd., Burnpur

D Indian Statistical Institute, Calcutta

Answer: D

SSC Exam Free Videos (Youtube)

Question 76

The dried flower buds are used as a spice in

A Cardamom

B Cinnamon

C Cloves

D Saffron

Answer: C

Question 77

The tissue in man where no cell division occurs after birth is

A skeletal

B nerves

C connective

D germinal

Answer: B

Question 78

DNA fingerprinting is used to identify the

- A Parents
- B Rapist
- C Thieves
- D All the above

Answer: D

SSC Free Preparation App

Question 79

The normal cholesterol level in human blood is

- A 80 - 120 mg%
- B 120 - 140 mg%
- C 140 - 180 mg%
- D 180 - 200 mg%

Answer: D

Question 80

Which of the following are warm-blooded animals?

- A Whales
- B Whale Sharks
- C Alytes
- D Draco

Answer: A

Question 81

Syrinx is the voice box in

- A Amphibians
- B Reptiles
- C Birds
- D Mammals

Answer: C

Daily Free SSC Practice Set

Question 82

The largest ecosystem of the Earth is

- A Biome
- B Hydrosphere
- C Lithosphere
- D Biosphere

Answer: A

Question 83

In a food chain, the solar energy utilized by plants is only

- A 10 per cent
- B 1 per cent
- C 0.1 per cent
- D 0.01 per cent

Answer: C

Question 84

Supersonic jet causes pollution by thinning of which layer?

- A O3 layer
- B O2 layer
- C SO2 layer
- D CO2 layer

Answer: A

SSC CGL Free Online Coaching

Question 85

OTEC stand for

- A Ocean Thermal Energy Conservation
- B Oil and Thermal Energy Conservation
- C Ocean Technology and Energy Conversion
- D Ocean Thermal Energy Conversion

Answer: D

Question 86

As per Railway Budget for 2011-2012, the senior citizen concession for men has been increased from

- A 25 % to 30%
- B 30 % to 40%
- C 40 % to 50%
- D 30 % to 50%

Answer: B

Question 87

The monster earthquake-cum-tsunami which his Japan on March, 11, 2011 has moved the country's main island, Honshu, by about

- A two feet
- B three feet
- C five feet
- D eight feet

Answer: D

SSC CHSL Previous Question papers (download pdf)

Question 88

What is the commonly used unit for measuring the speed of data transmission?

- A Mega Hertz
- B Character per second
- C Bits per second
- D Nano seconds

Answer: C

Question 89

Which type of reaction produces the most harmful radiation?

- A Fusion reaction
- B Fission reaction
- C Chemical reaction
- D Photo-Chemical reaction

Answer: B

Question 90

Which type of glass is used for making glass reinforced plastic?

- A Pyrex glass
- B Flint glass

C Quartz glass

D Fibre glass

Answer: D

Free SSC Study Material (18,000 Solved Questions)

Question 91

Which metal causes Itai-Itai disease?

A Cadmium

B Chromium

C Cobalt

D Copper

Answer: A

Question 92

Glycol is added to aviation gasoline because it

A reduces evaporation of petrol

B increases efficiency of petrol

C prevents freezing of petrol

D reduces consumption of petrol

Answer: C

Question 93

Who invented penicillin?

A Alexander Fleming

B Louis Pasteur

C Dresser

D Edward Jenner

Answer: A

Latest Job Updates on Telegram - Join here

Question 94

2018 FIFA World Cup was held in

A Russia

B Qatar

C France

D Netherlands

Answer: A

Question 95

Who of the following was not the recipient of Nobel Prize in Economics 2010?

A Peter A. Diamond

B Christopher Pissarides

C Lui Xiaobo

D Dale Mortensen

Answer: C

Question 96

Which troubled model was recalled recently by the Indian automobile giant Maruti Suzuki for replacement of faulty fuel pump gasket?

A Maruti 800

B Maruti A-Star

C Wagon R

D Baleno

Answer: B

Join SSC Daily Quiz Telegram Group

Question 97

As a part of Human Resource Development Ministry's 'brain gain' policy to attract global talent, 14 world class universities to attract global talents are proposed to be set up in various states. Name the state from the following where no university of the aforesaid type is proposed to be located.

A Punjab

B Bihar

C Rajasthan

D Uttaranchal

Answer: D

Question 98

Who discovered South Pole?

A Robert Peary

B Roald Amundsen

C John Cabot

D Tasman

Answer: B

Question 99

Which of the following folk dances is associated with Rajasthan?

- A Rauf
- B Jhora
- C Veedhi
- D Suisini

Answer: D

SSC CGL Free Mock Test

Question 100

For which book does V.S. Naipaul receive Booker Prize in 1971?

- A The Rediscovery of India
- B In a free state
- C Witness the Night
- D Tender Hooks

Answer: B

125 SSC CGL Mocks for just Rs. 199

Quant

Instructions

For the following questions answer them individually

Question 101

$p = 124, \sqrt[3]{p(p^2 + 3p + 3)} + 1 =$

- A 5
- B 7
- C 123
- D 125

Answer: D

Explanation:

Multiplying P inside whole equation will reduced to $((P + 1)^3)^{\frac{1}{3}} = (p+1)$
hence answer will be 125

SSC CGL Previous Papers (DOWNLOAD PDF)

Question 102

Find x given $\sqrt{1 - \frac{x^3}{100}} = \frac{3}{5}$

- A 2
- B 4
- C 16
- D $(136)^{\frac{1}{3}}$

Answer: B

Explanation:

After squaring on both sides we will get $(1 - \frac{x^3}{100}) = \frac{9}{25}$
now solving the eq. we will get $x=4$

Question 103

I multiplied a natural number by 18 and another by 21 and added the products. Which one of the following could be the sum?

- A 2007
- B 2008
- C 2006
- D 2002

Answer: A

Explanation:

let's say one number is n and another number is p
so acc. to question sum will be $18n+21p$
and this number will be divisible by 3 so answer will be (A)

Question 104

The product of two numbers is 45 and their difference is 4. The sum of squares of the two numbers is

- A 135
- B 240
- C 73
- D 106

Answer: D

Explanation:

As we know $(a - b)^2 = a^2 + b^2 - 2ab$
We assume that first number is a and second number is b hence $ab = 45$
and $a - b = 4$
after putting values we will get $a^2 + b^2 = 106$

25 SSC CHSL Mocks for just Rs. 149

Question 105

$$\sqrt{8 + \sqrt{57 + \sqrt{38 + \sqrt{108 + \sqrt{169}}}}}$$

- A 4
- B 6
- C 8
- D 10

Answer: A

Explanation:

Start from the root of 169 then second root will reduce to 11, third root will reduce to 7, fourth root will reduce to 8, and finally it reduce to value 4

Question 106

The square root of $14 + 6\sqrt{5}$

- A $2 + \sqrt{5}$
- B $3 + \sqrt{5}$
- C $5 + \sqrt{3}$
- D $3 + 2\sqrt{5}$

Answer: B

Explanation:

Given question can be written as $9 + 5 + 6\sqrt{5}$
or it will be square of $3 + \sqrt{5}$

Question 107

When 2^{31} is divided by 5 the remainder is

- A 4
- B 3
- C 2
- D 1

Answer: B

Explanation:

2^4 will be having a remainder of 1 after dividing it by 5
hence it can be reduced to $(2^4)^7 \times 8$

hence remainder will be same as remainder for 8 dividing by 5 which is 3

Question 108

$$1 + \frac{1}{1 + \frac{1}{1 + \frac{1}{3}}}$$

- A 21/13
- B 17/3
- C 34/21
- D 8/5

Answer: C

Explanation:

In second term solving from the lowest part first denominator will be $\frac{5}{3}$
second denominator will be $\frac{8}{5}$
third denominator will be $\frac{13}{8}$
fourth denominator will be $\frac{21}{13}$
hence eq. will reduce to $1 + \frac{34}{21} = \frac{55}{21}$

Question 109

The unit digit in the product 122^{173} is

- A 2
- B 4
- C 6
- D 8

Answer: A

Explanation:

As we know a number with unit digit 2 have repeating cycle of 2,4,8,6 after every fourth power as power is 173 or $(172+1)$ where till 172, 43rd cycle will get complete and next unit digit will be 2.

Question 110

$$\frac{2+\sqrt{3}}{2-\sqrt{3}} + \frac{2-\sqrt{3}}{2+\sqrt{3}} + \frac{\sqrt{3}+1}{\sqrt{3}-1} =$$

- A $16 + \sqrt{3}$
- B $4 - \sqrt{3}$
- C $2 - \sqrt{3}$
- D $2 + \sqrt{3}$

Answer: A

Explanation:

Take L.C.M. of first two term and then rationalise third term, equation will get reduce to $16 + \sqrt{3}$

Question 111

If $a * b = 2a + 3b - ab$, then the value of $(3 * 5 + 5 * 3)$ is

- A 10
- B 6
- C 4
- D 2

Answer: A

Explanation:

For $3*5$ put $a=3$ and $b=5$ in given equation
and for $5*3$ put $a=5$ and $b=3$ in equation
now add both values

Question 112

Simplify: $\frac{0.0347 \times 0.0347 \times 0.0347 + (0.9653)^3}{(0.0347)^2 - (0.347)(0.9653) + (0.9653)^2}$

- A 0.9306
- B 1.0009
- C 1.0050
- D 1

Answer: D

Explanation:

Numerator is of the form of $a^3 + b^3$ and denominator is of the form of $a^2 + b^2 - ab$
where $a = .0347$ and $b = .9653$
it will get reduce to $a+b = 1$

Question 113

A copper wire is bent in the form of an equilateral triangle, and has an area $121\sqrt{3}$ cm². If the same wire is bent into the form of a circle, the area(in cm²) enclosed by the wire in(Take $\pi = \frac{22}{7}$)

- A 364.5
- B 693.5
- C 346.5
- D 639.5

Answer: C

Explanation:

Area of equilateral triangle is $\frac{\sqrt{3}}{4} a^2$ where a is side of triangle
which is equals to $121\sqrt{3}$
or $a = 22$ and whole length of wire will be 66
from here when it is bend to make a circle, circumference will be $2\pi r = 66$
 $r = 10.5$
hence area of circle will be $\pi r^2 = 346.5$

1500 + Free Must Solved SSC Questions (With Solutions)

Question 114

A child reshapes a cone made up of clay of height 24 and radius 6cm into a sphere. The radius (in cm) of the sphere is

- A 6
- B 12
- C 24
- D 48

Answer: A

Explanation:

Since volume remain same while reshaping hence volume of cone = volume of sphere
or $\frac{1}{3}\pi r_1^2 h = \frac{4}{3}\pi r_2^3$ where r_1 radius of cone and r_2 radius of sphere and h is height of cone
after putting values we will get radius of sphere as 6

Question 115

Water flows into a tank which is 200m long and 150m wide, through a pipe of cross-section $0.3m \times 0.2m$ at 20 km/hour. Then the time (in minutes) for the water level in the tank to reach 8cm is

- A 50
- B 120
- C 150
- D 200

Answer: B

Explanation:

Volume of water in time t to reach at 8 cm. height will be equal to volume of tank till height 8 cm.
hence volume of water in time t to reach at height 8 cm. = $.3 \times .2 \times \frac{2000}{60} \times t$ (speed in per minute)
which is equal to volume of tank = $200 \times 150 \times \frac{8}{100}$
equating both and after solving we will get t = 120 min.

Question 116

The product of two numbers is 2028 and their H.C.F. is 13. The number of such pairs is

- A 1
- B 2
- C 3
- D 4

Answer: B

Explanation:

Factors of 2028 are 13,13,2,2,3
so there will be 2 cases only when highest common factor will remain 13 only
as 13×3 and 13×4
and 13×1 and 13×12

General Science Notes for SSC CGL

Question 117

Two equal vessels are filled with the mixture of water and milk in the ratio of 3:4 and 5:3 respectively. If the mixtures are poured into a third vessel, the ratio of water and milk in the third vessel will be

- A 15:12
- B 53:59
- C 20:9
- D 59:53

Answer: D

Explanation:

Let's say amounts in first vessel are $3x$ and $4x$

in second vessel = $5y$ and $3y$

So $7x = 8y$ (given) (eq. (1))

Pouring them together, new amounts will be $3x+5y$ and $4x+3y$

so new ratio will be $\frac{3x+5y}{4x+3y}$ (eq. 2)

putting ratio of x and y from eq. (1) in eq. (2) and solving we will get new ratio as 59:53

Question 118

I am three times as old as my son. 15 years hence, I will be twice as old as my son. The sum of our ages is

- A 48 years
- B 60 years
- C 64 years
- D 72 years

Answer: B

Explanation:

Let's say son's age is x

hence father's present age will be $3x$

after 15 years son's age will be $x + 15$ and father's age will be $3x + 15$ and it is twice the age of son

so $3x + 15 = 2(x + 15)$

solve for x

Question 119

Three bells ring simultaneously at 11 a.m. They ring at regular intervals of 20 minutes, 30 minutes, 40 minutes respectively. The time when all the three ring together next is

- A 2 p.m.
- B 1 p.m.
- C 1.15 p.m.
- D 1.30 p.m.

Answer: B

Explanation:

Bells are ringing at a regular interval of 20 min. , 30 min. , 40 min. respectively
hence time duration after which they will ring together will be least common multiple of 20, 30, 40
i.e. = 120
hence after 11:00 am , 120 min. later they will ring together i.e. 1:00 pm

Free SSC Study Material (18,000 Solved Questions)

Question 120

A and B together can do a works in 12 days. B and C together do it in 15 days. If A's efficiency is twice that of C, then the days required for B alone to finish the work is

- A 60
- B 30
- C 20
- D 15

Answer: C

Explanation:

A and B will do in 1 day, $\frac{1}{12}$ amount of work
B and C will do in 1 day, $\frac{1}{15}$ amount of work
Hence adding up above two equations
A+2B+C will do in 1 day, $\frac{9}{60}$ amount of work
as it is mentioned A=2C (i.e. efficiency of A is twice of C)
So 2C+2B+C will do in 1 day $\frac{9}{60}$ amount of work
or $2(B+C) + C = \frac{9}{60}$
or $C = \frac{1}{60}$ (as $B+C = \frac{1}{15}$)
or $B = \frac{1}{15} - \frac{1}{60} = \frac{1}{20}$
So B alone will do work in 20 days.

Question 121

A and B can do a work in 12 days, B and C can do the same work in 15 days, C and A can do the same time work in 20 days. The time taken by A, B and C to do the same work is

- A 5 days
- B 10 days
- C 15 days
- D 20 days

Answer: B

Explanation:

A+B will do $\frac{1}{12}$ amount of work in a day.
B+C will do $\frac{1}{15}$ amount of work.
C+A will do $\frac{1}{20}$ amount of work.
Adding above 3 equation $2(A+B+C) = \frac{1}{5}$
or $(A+B+C) = \frac{1}{10}$
Hence together A,B and C will do complete work in 10 days.

Question 122

A is 50% as efficient as B. C does half of the work done by A and B together. If C alone does the work in 20 days, then A, B and C together can do the work in

- A 17/3days
- B 20/3days
- C 6 days
- D 7 days

Answer: B

Explanation:

C does $\frac{1}{20}$ amount of work in a day.

And A+B do twice of work as much done by C or $A+B=2C$ or $\frac{2}{20}$.

So A+B+C together will do $\frac{2}{20} + \frac{1}{20} = \frac{3}{20}$ amount of work in a day.

And complete work will be done in $\frac{20}{3}$ days.

SSC Exam Free Videos (Youtube)

Question 123

The ratio of the volumes of water and glycerine in 240cc of a mixture is 1:3. The quantity of water (in cc that should be added to the mixture so that the new ratio of the volume of water and glycerine becomes 2:3 is

- A 55
- B 60
- C 62.5
- D 64

Answer: B

Explanation:

Let's say we added x cc of water.

According to previous ratio amount of water in mixture is $240 \times \frac{1}{4} = 60$

So after adding amount of water = $60 + x$

amount of glycerine = $240 \times \frac{3}{4} = 180$

Hence new ratio will be = $\frac{60+x}{180} = \frac{2}{3}$

or x will be 60.

Question 124

At present, the ratio of the ages of Maya and Chhaya is 6:5 and fifteen years from now, the ratio will get changed to 9:8. Maya's present age is

- A 21 years
- B 24 years
- C 30 years
- D 40 years

Answer: C

Explanation:

Let's say maya's age is $6x$ and chaya's age is $5x$.

after 15 years ages will be $6x + 15$ and $5x + 15$.

New ratio will be $\frac{6x+15}{5x+15} = \frac{9}{8}$.

After solving above equation we will get x equals to 5

So maya's age will be 30.

Question 125

The ratio of the income to the expenditure of a family is 10:7. If the family's expenses are Rs. 10,500, then savings of the family is

- A Rs. 4,500
- B Rs. 10,000
- C Rs. 4,000
- D Rs. 5,000

Answer: A

Explanation:

Let's say income is $10x$ and expenditure is $7x$.

Saving will be $3x$

As expenditure is 10500= $7x$

$$\text{or } x = 1500$$

Hence saving will be $1500 \times 3 = 4500$

SSC Free Preparation App

Question 126

The average mathematics marks of two Sections A and B of Class IX in the annual examination is 74. The average marks of Section A is 77.5 and that of Section B is 70. The ratio of the number of students of Section A and B

- A 7:8
- B 7:5
- C 8:7
- D 8:5

Answer: C

Explanation:

Let's say no of students in section A is N and in section B, it is M

Hence average will be $\frac{77.5N+70M}{M+N} = 74$

or $3.5N=4M$

$$\text{or } \frac{N}{M} = \frac{8}{7}$$

Question 127

The average weight of a group of 20 boys was calculated to be 89.4 kg and it was later discovered that one weight was misread as 78kg instead of 87 kg. The correct average weight is

- A 88.95 kg
- B 89.25 kg
- C 89.55 kg

D 89.85 Kg

Answer: D

Explanation:

Total weight with misreading = $20 \times 89.4 = 1788$

(87-78=9) should be added to correct the total = $1788+9 = 1797$

Hence correct average will be $\frac{1797}{20} = 89.85$

Question 128

The diameter of a wheel is 98 cm. The number of revolutions in which it will have to cover a distance of 1540 m is

A 500

B 600

C 700

D 800

Answer: A

Explanation:

In 1 revolution wheel will complete a distance of $2\pi r = 2 \times \pi \times \frac{98}{2} = 308$ cm.

Hence to cover 1540 m. , revolutions will be = $\frac{1540 \times 100}{308} = 500$

Daily Free SSC Practice Set

Question 129

In an equilateral triangle ABC of side 10cm, the side BC is trisected at D. Then the length (in cm) of AD is

A $3\sqrt{7}$

B $7\sqrt{3}$

C $\frac{10\sqrt{7}}{3}$

D $\frac{7\sqrt{10}}{3}$

Answer: C

Explanation:

As we know $c^2 = a^2 + b^2 - 2ab \times \cos C$ (where c is length of AD, a is length of AB = 10 and b is length of one of trisected part = $\frac{10}{3}$ after putting values and solving it , we will get its value = $\frac{10\sqrt{7}}{3}$

Question 130

The cost price of an article is Rs. 800. After allowing a discount of 10%, a gain of 12.5% was made. Then the marked price of the article is

A Rs. 1,000

B Rs. 1,100

C Rs. 1,200

D Rs. 1,300

Answer: A

Explanation:

Having a gain of 12.5%, selling price will be $800 \times \frac{112.5}{100} = 900$

So after having a discount of 10% on marked selling price is 900

Hence marked price will be = $900 \times \frac{100}{90} = 1000$

Question 131

A man bought an article listed at Rs. 1500 with a discount of 20% offered on the list price. What additional discount must be offered to man to bring the net price to Rs. 1,104?

- A 8%
- B 10%
- C 12%
- D 15%

Answer: A

Explanation:

After having 20% discount price will be = $1500 \times \frac{80}{100} = 1200$

So for net price of 1104 discount should be $1200 - 1104 = 96$

%discount = $\frac{96}{1200} \times 100 = 8\%$

SSC CGL Free Online Coaching

Question 132

If $\frac{a}{b} = \frac{c}{d} = \frac{e}{f} = 3$, then $\frac{2a^2+3c^2+4e^2}{2b^2+3d^2+4f^2} = ?$

- A 2
- B 3
- C 4
- D 9

Answer: D

Explanation:

Putting $a=3b$, $c=3d$, $e=3f$ in given equation $\frac{2a^2+3c^2+4e^2}{2b^2+3d^2+4f^2}$

It will get reduce to $\frac{18b^2+27d^2+36f^2}{2b^2+3d^2+4f^2}$

or $\frac{9(2b^2+3d^2+4f^2)}{2b^2+3d^2+4f^2} = 9$

Question 133

The floor of a room is of size $4m \times 3m$ and its height is 3m. The walls and ceiling of the room require painting. The area to be painted is

- A 66 m²
- B 54 m²
- C 43 m²
- D 33 m²

Answer: B

Explanation:

Area of walls and ceiling of room = area of 4 walls + area of 1 ceiling
 $= (2 \times (3 \times 3) + 2 \times (4 \times 3)) + 4 \times 3$
 $= 18 + 24 + 12 = 54$

Question 134

When the price of an article was reduced by 20% its sale increased by 80%. What was the net effect on the revenue?

- A 44% increase
- B 44% decrease
- C 66% increase
- D 66% decrease

Answer: A

Explanation:

Let's initial price is x , and sale is y so revenue will be xy
After having discount of 20%, initial price will be $\frac{80x}{100}$ and sale will be $\frac{180y}{100}$, hence new revenue is $1.44xy$.
Increment in revenue will be $0.44xy$ i.e. equal to 44%

SSC CHSL Previous Question papers (download pdf)

Question 135

The price of sugar goes up by 20%. If a housewife wants the expenses on sugar to remain the same, she should reduce the consumption by

- A 76/5%
- B 50/3%
- C 20%
- D 25%

Answer: B

Explanation:

Initial price x (say) and consumption is y , hence expense will be xy .

After price increment price is $\frac{120x}{100}$ and expense should remain xy .

Hence $\frac{120x}{100} \times N = xy$ (where N is new expense)
 $N = \frac{100y}{120}$

Decrement in consumption is $= \frac{20y}{120}$ or $\frac{50}{3}\%$

Question 136

In a factory 60% of the workers are above 30 years and of these 75% are males and the rest are females. If there are 1350 male workers above 30 years, the total number of workers in the factory

- A 3000
- B 2000

C 1800

D 1500

Answer: A

Explanation:

Let's say total number of workers are x .

Hence above 30 years workers will be $\frac{60x}{100}$

And male workers will be $\frac{60x}{100} \times \frac{75}{100} = 1350$ (given)

So x will be = 3000.

Question 137

Walking at $\frac{3}{4}$ th of his usual speed, aman is $1\frac{1}{2}$ hours late. his usual time to cover the same distance, in hours, is?

A $4\frac{1}{2}$

B 4

C $5\frac{1}{2}$

D 5

Answer: A

Explanation:

As distance is constant

Hence $v_1 \times t_1 = \frac{3v_1}{4} \times (t_1 + \frac{3}{2})$ (Where is v_1 is speed, t_1 is time taken to travel)

On solving above equation, we will get $t_1 = \frac{9}{2}$

Free SSC Study Material (18,000 Solved Questions)

Question 138

The selling price of 10 oranges is the cost price of 13 oranges. Then the profit percentage is

A 30%

B 10%

C 13%

D 3%

Answer: A

Explanation:

Let's say selling price of 10 oranges = cost price of 13 = y

cost price of 1 will be = $\frac{y}{13}$

cost price of 10 will be = $\frac{10y}{13}$

Selling price of 10 is = y

Gain is = $\frac{3y}{13}$

$$\text{Percentage gain} = \frac{13}{13} \times 100 = 30\%$$

Question 139

The marked price of an item is Rs. 480. The shopkeeper allows a discount at 10% and gains 8%. If no discount is allowed, his gain percent would be

- A 18%
- B 18.5%
- C 20.5%
- D 20%

Answer: D

Explanation:

Marked price = 480

discount = 10%

$$\text{Selling price} = 480 - \frac{480 \times 10}{100} = 432$$

Gain = 8%

$$\text{Cost price} = 432 \times \frac{100}{108} = 400$$

After no discount, gain will be = 480 - 400 = 80

$$\text{Percentage gain} = \frac{80}{400} \times 100 = 20\%$$

Question 140

A man sold 20 apples for Rs. 1000 and gained 20%. How many apples did he buy for Rs. 1000?

- A 20
- B 22
- C 24
- D 25

Answer: C

Explanation:

Selling price of 20 apples = 1000

gain = 20%

$$\text{Cost price of 20 will be} = \frac{1000 \times 100}{120} = \frac{2500}{3}$$

$$\text{So on cost price of 1000 amount of apples will be} = \frac{20 \times 3}{2500} \times 1000 = 24$$

Latest Job Updates on Telegram - Join here

Question 141

A rectangular sheet of metal is 40 cm by 15 cm. Equal squares of side 4 cm are cut off at the corners and the remainder is folded up to form an open rectangular box. The volume of the box is

- A 896 cm³
- B 986 cm³
- C 600 cm³

D 916 cm³

Answer: A

Explanation:

After cutting off squares of sides 4cm. from rectangular sheet of 40cm. × 15cm. and making a rectangular box
New dimensions of rectangular will be:

Base = 32cm. × 7cm.

Height = 4cm.

Hence volume will be $32 \times 7 \times 4 = 896cc$

Question 142

If 78 is divided into three parts which are in the ratio $1 : \frac{1}{3} : \frac{1}{6}$, the middle part is?

A $9\frac{1}{3}$

B 13

C $17\frac{1}{3}$

D $18\frac{1}{3}$

Answer: C

Explanation:

Ratio can be presented as 6:2:1

So middle part will be equal to $\frac{2}{9} \times 78 = \frac{52}{3}$

Question 143

The simple interest on a sum of money is $\frac{1}{9}$ of the principal and the number of years is equal to rate per cent annum. The rate per annum is

A 3%

B $\frac{1}{3}$ %

C $\frac{10}{3}$ %

D $\frac{3}{10}$ %

Answer: C

Explanation:

Simple interest = $P \times \frac{rate(r)}{100} \times time(t)$ (Where P is principal amount)

As interest = principal amount and rate(r) = time (t)

Hence after putting values, $t^2 = \frac{100}{9}$

or $t = \frac{10}{3}$ so $r = t = \frac{10}{3}$

Join SSC Daily Quiz Telegram Group

Question 144

The difference between simple interest and compound interest of a certain sum of money at 20% per annum for 2 years is Rs. 48. Then the sum is

A Rs. 1,000

- B Rs. 1,200
- C Rs. 1,500
- D Rs. 2,000

Answer: B

Explanation:

Difference between simple interest and compound interest for two years will be

$$48 = \frac{2pr}{100} - \left(\frac{2pr}{100} + \frac{pr^2}{10^4} \right) \text{ (where } p \text{ is principal amount and } r \text{ is rate per annum)}$$

Putting $r=20\%$ and solving above equation for p , we will get $p = 1200$ rs.

Question 145

Shri X goes to his office by scooter at a speed of 30 km/h and reaches 6 minutes earlier. If he goes at a speed of 24 km/h, he reaches 5 minutes late. The distance of his office is

- A 20 km
- B 21 km
- C 22 km
- D 24 km

Answer: C

Explanation:

As distance is constant, hence ratio of speed and time will remain same.

$$\text{so } 30 : (t_1 - 6) = 24 : (t_1 + 5) \text{ (where } t_1 \text{ is actual time taken in min.)}$$

Solving above equation, we will get value of $t_1 = 50 \text{ min.}$

$$\text{And distance will be} = \frac{30}{60} \times (50 - 6) = 22 \text{ km.}$$

Question 146

A sum of money becomes eight times in 3 years, if the rate is compounded annually. In how much time will the same amount at the same compound rate become sixteen times?

- A 6 years
- B 4 years
- C 8 years
- D 5 years

Answer: B

Explanation:

$$P\left(1 + \frac{r}{100}\right)^3 = 8P \text{ (Where } P \text{ is principal amount, } r \text{ is rate)}$$

$$\text{So } \left(1 + \frac{r}{100}\right) = 2$$

Now for 16 times

$$P\left(1 + \frac{r}{100}\right)^t = 16P$$

$$\text{or } 2^t = 16$$

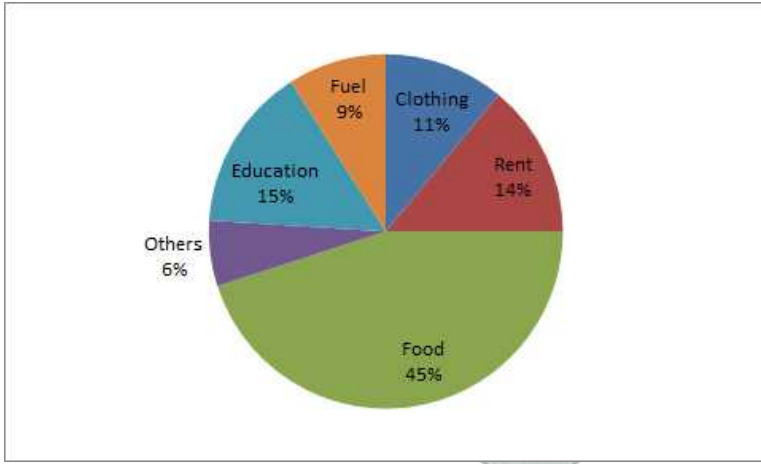
$$\text{or } t = 4$$

SSC CGL Free Mock Test

Instructions

Directions: The pie chart given below shows the spending of a family on various heads during a month. Study the graph and answer the

questions.



Question 147

If the total income of the family is Rs. 25,000, then the amount spent on Rent and Food together is

- A Rs. 17,250
- B Rs. 14,750
- C Rs. 11,250
- D Rs. 8,500

Answer: B

Explanation:

Total share percentage on food and rent = $45+14 = 59\%$
Hence price will be = $25000 \times 59/100 = 14750$

Question 148

What is the ratio of the expenses of Education to the expenses on Food?

- A 1:3
- B 3:1
- C 3:5
- D 5:3

Answer: A

Explanation:

Ratio of expenses will be proportional share in pie chart
So ratio of Education to Food will be = $15:45 = 1:3$

Question 149

Expenditure on Rent is what percent of expenditure of Fuel?

- A 135%
- B 156%
- C 167%
- D 172%

Answer: B

Explanation:

Expenditure on rent = 14%

Expenditure on fuel = 9%

Let's say total expenditure is 100.

So rent is $\frac{14}{9} \times 100 = 156\%$ of fuel.

125 SSC CGL Mocks for just Rs. 199

Question 150

Which three expenditures together have a central angle of 108° ?

- A Fuel, Clothing and Others
- B Fuel, Education and Others
- C Clothing, Rent and Others
- D Education, Rent and Others

Answer: B

Explanation:

Percentage of fuel, clothing and others together will be equal to 30%

So when total expense is 100, fuel, clothing and others together have expense of 30

Now when total expense is 360° , clothing, fuel and others will have expense of $\frac{30}{100} \times 360 = 108^\circ$

SSC CGL Previous Papers (DOWNLOAD PDF)

English

Instructions

Directions: In the following question, some of the sentences have errors and some are correct. Find out which part of a sentence has an error. The number of the part is your answer. If a sentence is free from errors, then your answer is d.i.e., No error.

Question 151

A senior doctor / expressed concern / about physicians recommended the vaccine. / No error.

- A A senior doctor
- B expressed concern
- C about physicians recommended the vaccine.
- D No error.

Answer: C

Explanation:

(replace 'recommended' with 'recommending')

25 SSC CHSL Mocks for just Rs. 149

Question 152

We have discussing / all the known mechanisms / of physical growth, / No error.

- A We have discussing

- B all the known mechanisms
- C of physical growth,
- D No error.

Answer: A

Explanation:
(replace 'have' with 'are')

Question 153

Children enjoy listening to / ghosts stories / especially on Halloween night. / No error.

- A Children enjoy listening to
- B ghosts stories
- C especially on Halloween night.
- D No error.

Answer: B

Explanation:
(replace 'ghosts' with 'ghost')

Question 154

I / have / many works to do. / No error.

- A I
- B have
- C many works to do.
- D No error.

Answer: D

Explanation:
no error

SSC CGL Tier-2 Previous Papers PDF

Question 155

There are so many filths / all around / the place. / No error.

- A There are so many filths
- B all around
- C the place.
- D No error.

Answer: A

Explanation:
The error is in combining "many" and "*filths". The determiner "many" (meaning a large number/quantity) takes a plural count noun like

"things", "people", "boxes". But "filth" is a non-count noun that has no plural form (you can't say "filths").

Instructions

Choose the option which is most appropriate to fill in the blank

Question 156

The building is not safe and must be ____ down.

- A pull
- B pulling
- C pulled
- D pulls

Answer: C

Explanation:

The correct answer is -C

Pull down means - to destroy, to demolish.

After 'be' we use 3rd form of the verb so usage of 'Pulled' will be correct.

Pulls - we use in simple present tense with 3rd person singular.

Pulling - in present continuous tense

Pull-down Present tense.

Question 157

There is something wonderful ____ him.

- A of
- B about
- C for
- D inside

Answer: B

Explanation:

The correct answer is -B

The preposition 'About' is correct here.

Here 'About' means in connection with.

The remaining options doesn't fits here.

Of- When we want to denote 'Who /what does it belong to', what does it show.

Ex- A page of the book.

Inside - it is used when we want to say something/someone is in room or building.

Enclosed in a container, or space.

Ex- He was inside the building.

For - to indicate time (over a certain period of time), instead of, to indicate destination.

Ex- He was leaving for Pune tonight.

Question 158

The song in the play cannot be deleted it is ____ to the story.

- A intervened
- B innate
- C exacting
- D integral

Answer: D

Explanation:

The correct answer is -D.

The meaning of integral is elementary, fundamental, anything which is not omissible, removable.

The sentence implies here that song in that play is not removable as it is part of that story or it is fundamental to story.

Meaning of remaining options

- 1) Intervene- to come between.
- 2) Innate- Inborn, natural.
- 3) exacting- demanding, requiring precise accuracy.

If we go through the options only 'Integral' best fits into the blank.

Question 159

She remained a ____ all her life.

- A spinster
- B bachelor
- C unmarried
- D single

Answer: A

Question 160

Do not stay in the grasslands after dark, as some animals become ____ when they see humans.

- A provoked
- B alerted
- C aggressive
- D threatened

Answer: C

Explanation:

The correct answer is -C

Aggressive - means attacking

Rest options doesn't add any meaning here.

Threatened- unsafe

Altered- changed, modifies

Provoked-angry.

1500 + Free Must Solved SSC Questions (With Solutions)

Instructions

Choose the option that is most similar in meaning as the word in the question

Question 161

LUCIDITY

- A Fluidity
- B Politeness
- C Clarity
- D Fluency

Answer: C

Question 162

INDICT

- A Implicate
- B Elude
- C Appreciate
- D Judge

Answer: A

Question 163

DELUGE

- A Confusion
- B Deception
- C Flood
- D Weapon

Answer: C

Question 164

PREPONDERANCE

- A Pre-eminence
- B Dominance
- C Domineering
- D Preoccupation

General Science Notes for SSC CGL

Answer: D

Question 165

APPRAISE

- A Accuse
- B Praise
- C Appreciate
- D Judge

Answer: B

Instructions

Directions: In the following question, out of the four alternatives, choose the word opposite in meaning to the given word.

Question 166

INVINCIBLE

- A Small
- B Invisible
- C Vulnerable
- D Reachable

Answer: C

Free SSC Study Material (18,000 Solved Questions)

Question 167

INOFFENSIVE

- A Sensitive
- B Organic
- C Sensible
- D Rude

Answer: D

Question 168

DIVULGE

- A Conceal
- B Disguise
- C Oppress
- D Reveal

Answer: A

Question 169

DISCORD

- A Harmony
- B Serenity
- C Acceptance
- D Placidity

Answer: A

SSC Exam Free Videos (Youtube)

Question 170

MAMMOTH

- A Quiet
- B Significant
- C Huge
- D Small

Answer: D

Instructions

Choose the option most similar in meaning to the phrase given in the question.

Question 171

To take to heart

- A to be encouraged
- B to grieve over
- C to like
- D to hate

Answer: B

Question 172

Yeoman's service

- A medical help
- B excellent work
- C social work
- D hard work

Answer: A

SSC Free Preparation App

Question 173

To face the music

- A to enjoy a musical recital
- B to bear the consequences
- C to live in a pleasant atmosphere
- D to have a difficult time

Answer: B

Question 174

To put up with

- A to accommodate
- B to adjust
- C to understand
- D to tolerate

Answer: D

Question 175

To call it a day

- A to conclude proceedings
- B to initiate proceedings
- C to work through the day
- D None of the above

Answer: D

Daily Free SSC Practice Set

Instructions

Choose the grammatical correct way of phrasing the sentence given in the question. Choose option E if no change is needed.

Question 176

The man whom I thought was thoroughly honest proved to be a swindler.

- A The man whom I thought was thoroughly honest proved as swindler.
- B The man who I thought was thoroughly honest proved to be a swindler.
- C The man to whom I thought was thoroughly honest proved to be a swindler,
- D No improvement

Answer: D

Explanation:

No error

Question 177

No sooner had the dividend been declared, the notices were sent out.

- A The company had hardly declared the dividend till the notices were sent for mailing.
- B They had no sooner declared to dividend then the notices were sent out.
- C Hardly had the dividend been declared than the notices were sent out.
- D No improvement.

Answer: A

Explanation:

hardly (Adv.): used for saying that something has just begun, happened etc.

Question 178

Riding upon his horse, the tiger jumped at him.

- A Riding upon the tiger, the horse jumped at him.
- B The tiger jumped at him while he was riding upon his horse
- C The tiger rode at him while he was jumping upon his horse.
- D No improvement

Answer: B

Explanation:

'the tiger jumped at him while he was riding upon his horse' will be used.

SSC CGL Free Online Coaching

Question 179

I in black and white must have your terms down.

- A I must have in black in white your terms down.
- B I must have your terms in black and white down.
- C I must have your terms down in black and white.
- D No improvement.

Answer: C

Explanation:

in black and white (Idiom): in writing or printing 'I must have your terms down, in black and white' will be used.

Question 180

When we are came out of the restaurant it was half past eleven.

- A When we had come out of the restaurant
- B After we came out of the restaurant
- C When we have come out of the restaurant
- D No improvement

Answer: A

Explanation:

When we had come out of the restaurant right usage

Instructions

Choose the option whose meaning matches the definition given in the question

Question 181

Code of diplomatic etiquette and precedence

- A Statesmanship
- B Diplomacy
- C Hierarchy
- D Protocol

Answer: D

[SSC CHSL Previous Question papers \(download pdf\)](#)

Question 182

To renounce a high position of authority or control

- A Abduct
- B Abandon
- C Abort
- D Abdicate

Answer: D

Question 183

Not to be moved by entreaty

- A Rigorous
- B Negligent
- C Inexorable
- D Despotic

Answer: D

Question 184

An object or portion serving as a sample

- A Specification
- B Spectre
- C Spectacle
- D Specimen

Answer: D

Free SSC Study Material (18,000 Solved Questions)

Question 185

The practice of submitting a proposal to popular vote

- A Election
- B Reference
- C Popularity
- D Referendum

Answer: D

Instructions

For the following questions answer them individually

Question 186

- A mandatory
- B circulatory
- C temporary
- D regulatory

Answer: C

Question 187

- A convinience
- B initiative
- C concessional
- D exaggerate

Answer: D

Latest Job Updates on Telegram - Join here

Question 188

- A dialogue
- B giraffe

- C scissors
- D humourous

Answer: C

Question 189

- A assiduous
- B nefarious
- C macabre
- D loquacious

Answer: B

Question 190

- A cortege
- B damage
- C milege
- D plumege

Answer: A

Join SSC Daily Quiz Telegram Group

Instructions

Directions: In the following passage some of the words have been left out. First read the passage over and try to understand what it is about. Then fill the blanks with the help of the alternative given.

Passage

Science means knowledge, but not all knowledge is science. I know from my own eyesight that our dog Chippy lies papaya; I know from a book that Akbar was the (191) of Babar, and (192) in 1605; and I know (193) the ratio that India did not do well in the (194) Test matches. We can call these (195) of knowledge (196) but they are not science.

Science (197) with facts, but not with facts which have (198) to do with each other, like the facts about our dog, cricket and the Mughal ruler; those facts are not related (199), and so have nothing (200) with science. Science starts with observation.

Question 191

- A grandson
- B grandfather
- C grand nephew
- D son

Answer: A

Explanation:

The correct answer option -A

As we studied in history Akbar is grandson of Babar or we can get that information by understanding the given passage.

Grandson is the correct choice.

Question 192

- A gone
- B died
- C disappeared
- D absented

Answer: B

Explanation:

The correct answer is option -B

Died is the correct choice.

Gone,disaappear,absented doesn't suits here.

Question 193

- A on
- B in
- C since
- D from

Answer: A

Explanation:

The correct answer is option -A

Preposition -In,since, from are contextually incorrect here.

In - it is used to indicate time,place.

Since- It is used to indicate time

From- it is used to indicate time, direction.

SSC CGL Free Mock Test

Question 194

- A old
- B ordinary
- C latest
- D outdated

Answer: C

Explanation:

The correct answer is option -C

Latest -most recent.

Old - obsolete

Ordinary- normal,customary, routine.

Outdated- out of date,old fashioned.

Remaining options doesn't add any meaning.

Question 195

- A pieces
- B peace
- C whole
- D block

Answer: A

Explanation:

The correct answer is option -A

Pieces of knowledge -it means information.

Peace- (noun) -harmony,quiet.

Whole-(adjective)-entire,sound, uninjured.

Block-barrier,stuff,roof,wall.

Remaining options are contextually incorrect.

Question 196

- A lies
- B charges
- C facts
- D blame

Answer: C

Explanation:

The correct answer is option -C

Facts is the correct choice which adds meaning here.

Lies -(noun) Plural form of lie.

In it's adjective -great, wonderful.

Blame- (verb)- to criticize, reproach, upbraid.

Charges- the amount of money levied for a service.

Remaining options are contextually incorrect

125 SSC CGL Mocks for just Rs. 199

Question 197

- A starts
- B stops
- C passes
- D drives

Answer: A

Explanation:

The correct answer is option -A

Starts with is the correct expression.

Stops - halt,cease.

Passes- an opening,a channel.

Drives- public roadway,desire, interest.

Remaining options are contextually incorrect here.

Question 198

- A no
- B neither
- C nor
- D nothing

Answer: D

Explanation:

The correct answer is -D

If we look at the options only `nothing' suits here.

Neither- adverb- similarly not

- adjective- not one of two,not either.

No- adjective- not any.

Nor- it will act as a conjunction.

Question 199

- A by that way
- B in any way
- C from the side
- D in addition to

Answer: B

Explanation:

The correct answer is option -B

In any way is the correct expression.

By the way - In the manner described /suggested.

In any way-likely, possibly

In addition to - including ,along with,as well as.

Rest doesn't add any meaning.

SSC CGL Previous Papers (DOWNLOAD PDF)

Question 200

- A to lie
- B to speak
- C to sleep
- D to do

Answer: D

Explanation:

The correct answer is -D

To do is the correct choice.

Remaining options doesn't add any meaning to the sentence.

25 SSC CHSL Mocks for just Rs. 149

SSC CGL Free Mock Test

125 SSC CGL Mocks for just Rs. 199

SSC CGL Previous Papers (DOWNLOAD PDF)

25 SSC CHSL Mocks for just Rs. 149

SSC CGL Tier-2 Previous Papers PDF

SSC CGL Important Questions PDF

1500 + Free Must Solved SSC Questions (With Solutions)

General Science Notes for SSC CGL

Free SSC Study Material (18,000 Solved Questions)

SSC Exam Free Videos (Youtube)

SSC Free Preparation App

Daily Free SSC Practice Set

SSC CGL Free Online Coaching

SSC CHSL Previous Question papers (download pdf)

Free SSC Study Material (18,000 Solved Questions)

Latest Job Updates on Telegram - Join here

Join SSC Daily Quiz Telegram Group

