



2016 SSC CGL 01 Sep Evening Shift

All rights reserved. No part of this publication may be reproduced, distributed, or transmitted in any form or by any means, electronic, mechanical, photocopying, recording or otherwise, or stored in any retrieval system of any nature without the permission of cracku.in, application for which shall be made to support@cracku.in

Reasoning

Instructions

For the following questions answer them individually

Question 1

Select the related word/letters/numbers from the given alternatives:

Book:Pages::Wall:?

- A SAND
- B CEMENT
- C BRICKS
- D STONES

Answer: C

Explanation:

Books are made up by binding pages together, similarly a wall is made up of bricks.

=> Ans - (C)

SSC CGL Free Mock Test

Question 2

Select the related word/letters/numbers from the given alternatives:

LNPQ : ACEF :: TVXY : ?

- A IMKL
- B IKMO
- C IKMN
- D PKLR

Answer: C

Explanation:

Expression = LNPQ : ACEF :: TVXY : ?

The pattern followed is =

L (+2 letters) = N (+2 letters) = P (+1 letter) = Q

A (+2 letters) = C (+2 letters) = E (+1 letter) = F

T (+2 letters) = V (+2 letters) = X (+1 letter) = Y

Similarly, I (+2 letters) = K (+2 letters) = M (+1 letter) = N

=> Ans - (C)

Question 3

Select the related word/letters/numbers from the given alternatives:

4:20::8: ?

- A 74
- B 70

C 72

D 78

Answer: C

Explanation:

Expression = 4:20::8: ?

The pattern followed is = $n : n(n + 1)$

Eg = $4 : 4 \times 5 = 4 : 20$

Similarly, $8 \times (8 + 1) = 8 \times 9 = 72$

=> Ans - (C)

Question 4

For the following questions

Find the odd word/letters/number from the given alternatives.

(A) Bud

(B) Branch

(C) Leaf

(D) Plant

A A

B B

C C

D D

Answer: D

Explanation:

Bud, branch and leaf are parts of plant, hence plant is the odd one out.

=> Ans - (D)

125 SSC CGL Mocks for just Rs. 199

Question 5

For the following questions

Find the odd word/letters/number from the given alternatives.

(A) ABD

(B) FGI

(C) LMO

(D) STU

A A

B B

C C

D D

Answer: D

Explanation:

(A) : A (+1 letter) = B (+2 letters) = D

(B) : F (+1 letter) = G (+2 letters) = I

(C) : L (+1 letter) = M (+2 letters) = O

(D) : S (+1 letter) = T (+1 letter) = U

=> Ans - (D)

Question 6

For the following questions

Find the odd word/letters/number pair from the given alternatives.

(A) 24-42

(B) 36-63

(C) 37-73

(D) 35-51

A A

B B

C C

D D

Answer: D

Explanation:

In the first three options, digits are interchanged, hence 35-51 is the odd one out.

=> Ans - (D)

Question 7

Arrange the following words as per order in the dictionary.

1. Manifest

2. Meticulous

3. Meridian

4. Merchant

A 1,4,3,2

B 2,1,4,3

C 1,3,2,4

D 2,3,4,1

Answer: A

Explanation:

As per the dictionary,

= Manifest -> Merchant -> Meridian -> Meticulous

≡ 1,4,3,2

=> Ans - (A)

SSC CGL Previous Papers (DOWNLOAD PDF)

Question 8

Which one set letters when sequentially placed at the gaps in the given letter series shall complete it?

M_OMMN_M_NOMMN_M

- A O N M O
- B N O M O
- C M O N M
- D N N M O

Answer: B

Explanation:

Expression : M_OMMN_M_NOMMN_M

The pattern followed is that in a group of 4 letters, 'MNOM' is repeated.

=> MNOM MNOM MNOM MNOM

=> Ans - (B)

Question 9

Which number will complete the series?

14, 27, 52, 101, 198, ?

- A 381
- B 395
- C 391
- D 394

Answer: C

Explanation:

The pattern followed is :

$$14 + (14 - 1) = 27$$

$$27 + (27 - 2) = 52$$

$$52 + (52 - 3) = 101$$

$$101 + (101 - 4) = 198$$

$$198 + (198 - 5) = 391$$

=> Ans - (C)

Question 10

M is son of P, Q is the grand-daughter of O, who is the husband of P. How is M related to O?

- A Son
- B Daughter
- C Mother
- D Father

Answer: A

Explanation:

O(male) and P(female) are married. M is the son of P,

=> O and P are parents of M(male).

Thus, M is the son of O.

Note :- The second statement is redundant.

=> Ans - (A)

25 SSC CHSL Mocks for just Rs. 149

Question 11

Ramesh is richer than Satish but Jaya is less rich than Ramesh. Ram is less rich than Jaya but richer than Satish, but is not as rich as Ramesh. Ramesh is less rich than Navin. The richest amongst them is?

- A Ramesh
- B Satish
- C Navin
- D Jaya

Answer: C

Explanation:

Ramesh is richer than Satish but Jaya is less rich than Ramesh, => Ramesh > Satish , Jaya

Ram is less rich than Jaya but richer than Satish, => Jaya > Ram > Satish

Combining above statements, we get : Ramesh > Jaya > Ram > Satish

Also, Ramesh is less rich than Navin.

∴ **Navin > Ramesh > Jaya > Ram > Satish**

Thus, Navin is the richest.

=> Ans - (C)

Question 12

From the given alternative words, select the word which cannot be formed using the letters of the given word:

CARPENTER

- A NECTAR
- B CARPET
- C PAINTER
- D REPENT

Answer: C

Explanation:

The word CARPENTER does not contain any 'I', and thus the word 'Painter' cannot be formed.

=> Ans - (C)

Question 13

If FRIEND is coded as HUMJTK, how can CANDLE be written in that code?

- A EDRIRL
- B ESJFME
- C DCQHQB
- D DEQJQM

Answer: A

Explanation:

FRIEND is coded as HUMJTK

The pattern followed is :

F	R	I	E	N	D
(+2)	(+3)	(+4)	(+5)	(+6)	(+7)
H	U	M	J	T	K

Similarly, for CANDLE :

C	A	N	D	L	E
(+2)	(+3)	(+4)	(+5)	(+6)	(+7)
E	D	R	I	R	L

=> Ans - (A)

SSC CGL Tier-2 Previous Papers PDF

Question 14

If A denotes -, C denotes ×, D denotes ÷, E denotes +, then 14C3A12E4D2= ?

- A 6
- B 17
- C 28
- D 32

Answer: D

Explanation:

Expression : 14C3A12E4D2= ?

$$\equiv 14 \times 3 - 12 + 4 \div 2$$

$$= 42 - 12 + 2 = 32$$

=> Ans - (D)

Question 15

If 879= 8,
625= 1,
586= 9,
then 785 = ?

- A 6
- B 7
- C 8
- D 9

Answer: A

Explanation:

In each number, the first digit is subtracted from the sum of last two digits.

Eg : $879 = (7 + 9) - 8 = 16 - 8 = 8$

and $625 = (2 + 5) - 6 = 7 - 6 = 1$

and $586 = (8 + 6) - 5 = 14 - 5 = 9$

Similarly, $785 = (8 + 5) - 7 = 13 - 7 = 6$

=> Ans - (A)

Question 16

Find the missing number from the given alternatives:

8	7	6
7	6	5
6	5	4
90	65	?

A 54

B 44

C 34

D 26

Answer: B

Explanation:

In the first column, number at the end is obtained by adding the first two and multiplying the result by the third number.

Eg : $(8 + 7) \times 6 = 15 \times 6 = 90$

and $(7 + 6) \times 5 = 13 \times 5 = 65$

Similarly, $(6 + 5) \times 4 = 11 \times 4 = 44$

=> Ans - (B)

SSC CGL Important Questions PDF

Question 17

Sham goes to his friend's house that is straight 10 Km from his house. On his way back, he takes a right turn and walks 2 Km and again takes a right turn and walks for 10 Km before he takes a right turn again. How much distance is Sham still away from his house?

A 10 Km

B 8 Km

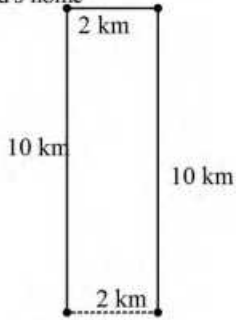
C 12 Km

D 2 Km

Answer: D

Explanation:

Friend's home



Sham's home

So, Sham is 2 km from his house, hence option 4 is correct.

=> Ans - (D)

Question 18

One or two statements are given followed by two conclusions, I and II. You have to consider the statement to be true, even if it seems to be at variance from commonly known facts. You are to decide which of the given conclusions/assumptions can definitely be drawn from the given statement. Indicate your answer.

Statement:

All boys are tall.

Rajiv is a boy.

Conclusion:

I: Rajiv is tall.

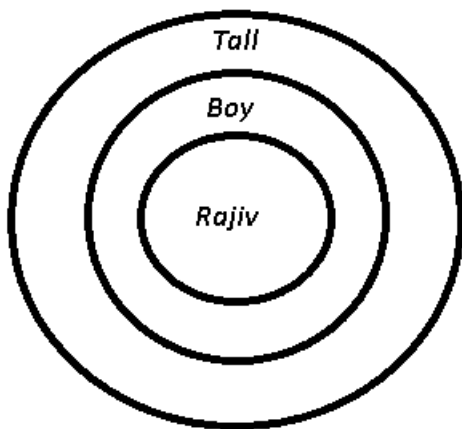
II: Rajiv is not tall.

- A Only conclusion I follows
- B Only conclusion II follows
- C Both conclusion I and conclusion II follow
- D Neither conclusion I nor conclusion II follows

Answer: A

Explanation:

The venn diagram for the above statements is :



Conclusion:

I: Rajiv is tall = true

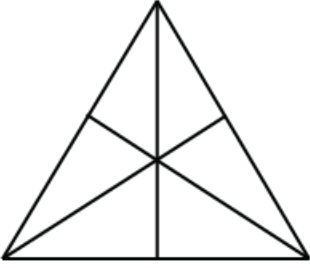
II: Rajiv is not tall = false

Thus, only conclusion I follows

=> Ans - (A)

Question 19

How many triangles are there in the question figure?



- A 6
- B 10
- C 12
- D 16

Answer: D

Explanation:

Small triangles = 6

Triangles made by combining 2 small triangles = 3

Triangles made by combining 3 small triangles = 6

Large triangles = 1

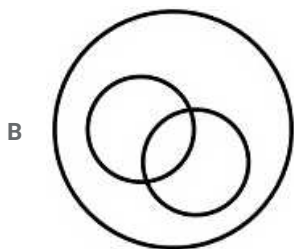
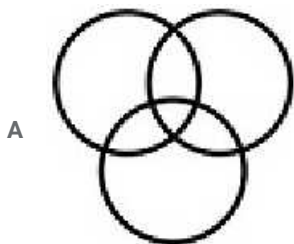
So, total = $6 + 3 + 6 + 1 = 16$

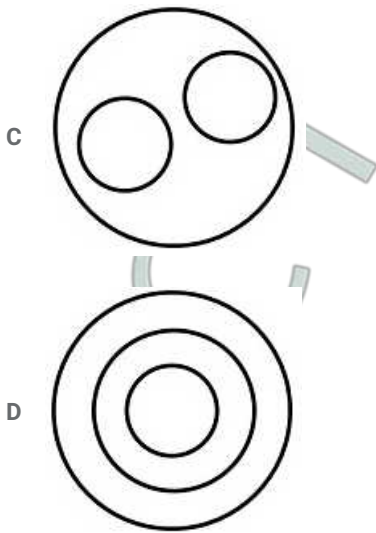
=> Ans - (D)

1500 + Free Must Solved SSC Questions (With Solutions)

Question 20

Which of the following diagrams represent the relationship between Awards, Pulitzer Prize and Oscars?





Answer: C

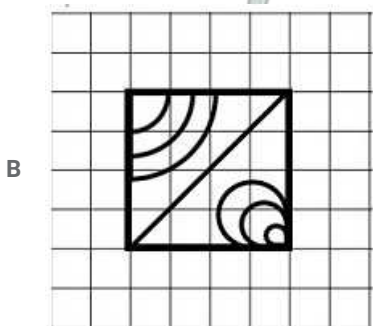
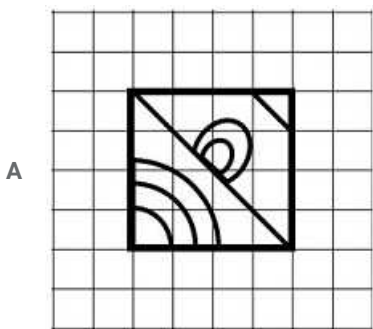
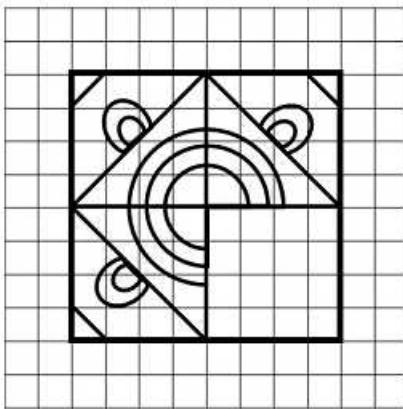
Explanation:

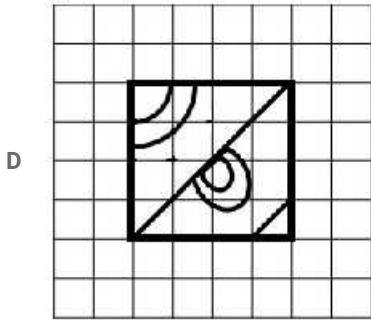
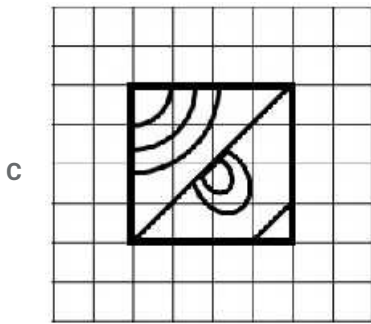
Pulitzer Prize and Oscars are both very different types of awards, thus the third figure best represent above relationship.

=> Ans - (C)

Question 21

Which answer figure will complete the pattern in the question figure?





Answer: C

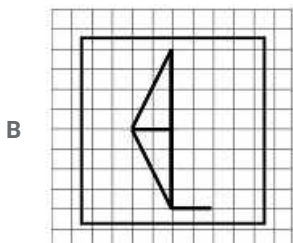
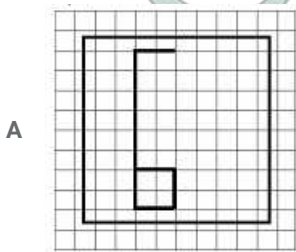
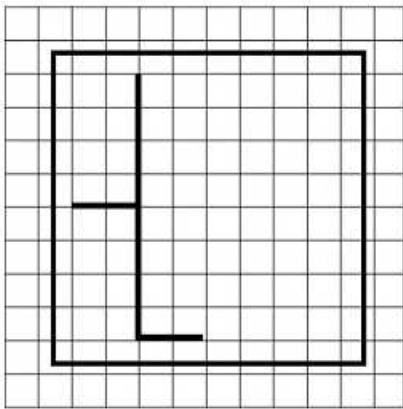
Explanation:

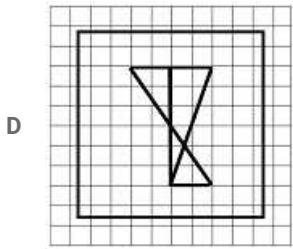
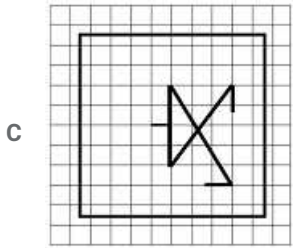
The first option is wrong as it does not complete 3 circles drawn around centre. The second is wrong as it doesn't have small line and small rings are wrongly placed. The last option is wrong as it has 2 circles instead of 3.

=> Ans - (C)

Question 22

From the given answer figures, select the one in which the question figure is hidden/embedded.

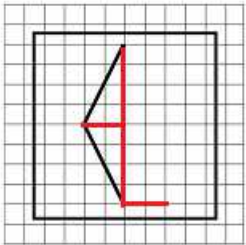




Answer: B

Explanation:

The question figure is embedded in the following figure :

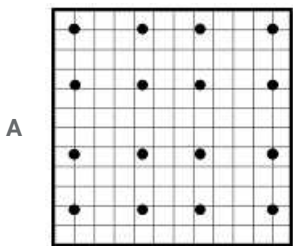
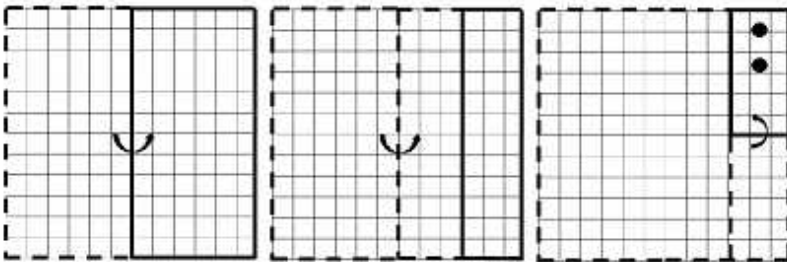


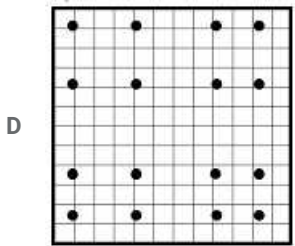
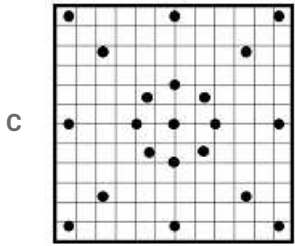
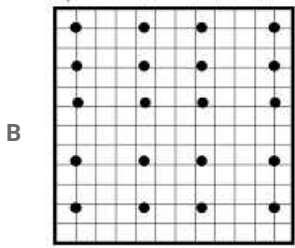
=> Ans - (B)

General Science Notes for SSC CGL

Question 23

A piece of paper is folded and cut as shown below in the question figures. From the given answer figures, indicate how it will appear when opened.





Answer: D

Explanation:

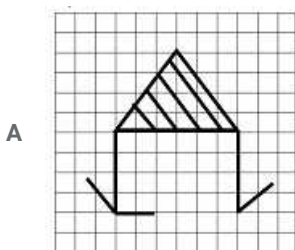
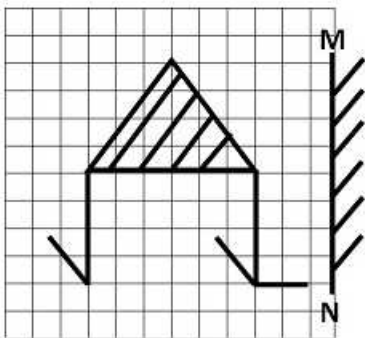
When 1st unfolded vertically, it will have 2 holes at top, 2 at bottom with more gap at centre. If we keep unfolding it horizontally, it will appear as shown in the last figure.

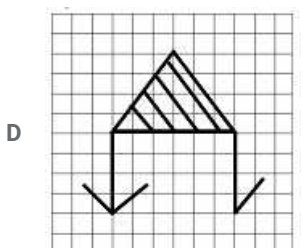
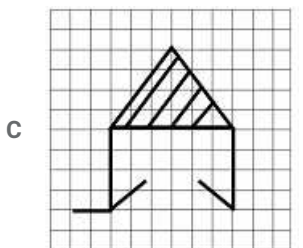
It will not have circular symmetry as shown in third figure, will not have 5 holes as shown in second figure. Also, holes will not be symmetrically placed as shown in first figure.

=> Ans - (D)

Question 24

If a mirror is placed on the line MN, then which of the answer figures is the right image of the given figure?





Answer: B

Explanation:

In the first and last option, two lines drawn at left bottom part are incorrect. In the third option, small line drawn at bottom right is wrongly placed.

Thus, the second option is the correct mirror image of the question figure.

=> Ans - (B)

Question 25

In this question, the sets of numbers given in the alternatives are represented. The columns and rows of Matrix I are numbered from 0 to 4 and that of Matrix II are numbered from 5 to 9. A letter from these matrices can be represented first by its row and next by its column, e.g., D can be represented by 04,12, etc., and 'I' can be represented by 65, 79, etc. Similarly you have to identify the set for the word 'BANK'.

Matrix - I

	0	1	2	3	4
0	B	N	G	L	D
1	G	L	D	B	N
2	D	B	N	G	L
3	N	G	L	D	B
4	L	D	B	N	G

Matrix - II

	5	6	7	8	9
5	A	I	K	O	R
6	I	K	O	R	A
7	K	O	R	A	I
8	O	R	A	I	K
9	R	A	I	K	O

A 42,69,14,98

B 00,55,33,57

C 21,67,30,86

D 42,78,43,58

Answer: A

Explanation:

(A) : 42,69,14,98 = BANK

(B) : 00,55,33,57 = BADK

(C) : 21,67,30,86 = BONR

(D) : 42,78,43,58 = BANO

=> Ans - (A)

Free SSC Study Material (18,000 Solved Questions)

General Awareness

Instructions

For the following questions answer them individually

Question 26

Which is the heaviest metal among the following?

- A Gold
- B Silver
- C Iron
- D Copper

Answer: A

SSC Exam Free Videos (Youtube)

Question 27

Which of the following uses the spawn mechanism to duplicate itself ?

- A Trojan horse
- B Worm
- C Keystroke logger
- D Logic bomb

Answer: B

Question 28

Sun appears red in colour at sunrise and sunset due to

- A the fact that sun emits only red colour at that time
- B red light having longer wave length scatters away
- C that sun comes out of the mountains
- D that all other colours scatter away except red

Answer: D

Question 29

What is the main purpose of white blood corpuscles?

- A to carry nutrients
- B to combat infection
- C to carry oxygen
- D to give strength

Answer: B

SSC Free Preparation App

Question 30

The layer where the decrease in temperature with increasing altitude is totally absent is

- A Troposphere
- B Ionosphere
- C Stratosphere
- D Mesosphere

Answer: C

Question 31

At hill stations, the boiling point of water will be

- A same as at sea level
- B less than that at sea level
- C more than that at sea level
- D equal to the melting point of ice

Answer: B

Question 32

Gandhiji's 'Satyagraha' meant an attachment to the following two elements

- A Knowledge and religion
- B Truth and non-violence
- C Truth and chastity
- D Love of motherland and hate for colonial masters

Answer: B

Daily Free SSC Practice Set

Question 33

What do you mean by 'Density of Population'?

- A Ratio of people living below poverty line to total population
- B Number of persons live per square kilometre
- C Number of persons in a city
- D Number of persons living per kilometre

Answer: B

Question 34

Which is not a feature of a capitalist economy?

- A Right to private property
- B Existence of competition
- C Service motive
- D Freedom of choice to consumers

Answer: C

Question 35

Sunita Williams is a

- A Astronaut
- B Missile scientist
- C Nuclear scientist
- D Astro physicist

Answer: A

SSC CGL Free Online Coaching

Question 36

Who is the writer of the famous book 'Kabuliwala'?

- A Bankim Chandra Chatterjee
- B Ravindra Nath Tagore
- C Munshi Prem Chand
- D Khan Abdul Gaffar Khan

Answer: B

Question 37

The term 'bully' is connected with which sport ?

- A Cricket
- B Hockey

C Badminton

D Tennis

Answer: B

Question 38

Who amongst the following Wrestlers has been the recipient of the Rajiv Gandhi Khel Ratna Award?

A Vijender Singh

B Sushil Kumar

C Anand Kumar Singh

D Zoravar Singh Faujdar

Answer: B

SSC CHSL Previous Question papers (download pdf)

Question 39

Siderosis is a disease caused by the inhalation of

A silica dust

B iron dust

C zinc dust

D coal dust

Answer: B

Question 40

The term "Doab" means

A a land between two mountains

B a land between two lakes

C a land between two rivers

D a land between two seas

Answer: C

Question 41

Which of the following is used as anaesthetics?

A N_2

B N_2O

C CH_4

D CO_2

Answer: B

Free SSC Study Material (18,000 Solved Questions)

Question 42

Clove is obtained from

- A Root
- B Stem
- C Leaves
- D Flower buds

Answer: D

Question 43

What is Dakshin Gangotri ?

- A River valley in Andhra Pradesh
- B Unmanned station located in Antarctica
- C Second source of River Ganga
- D Island in the Indian Ocean

Answer: B

Question 44

Japan is called the 'Land of the rising sun' because

- A Sun rises there as soon as it sets
- B Sun always remains in the eastern part of the sky throughout the day in Japan
- C Japan being the Eastern most country in the world, it has the earliest sunrise
- D The rays of the sun get reflected from the waters of the sea and make the sunrise beautiful in Japan

Answer: C

Latest Job Updates on Telegram - Join here

Question 45

Who was the first Englishman to appear in the Mughal Court during Jahangir's reign?

- A Paul Canning
- B Captain William Hawkins
- C William Edward
- D Ralph Fitch

Answer: B

Question 46

The 'Narmada Water Dispute Tribunal' was constituted to resolve the water sharing between

- A Gujarat and Rajasthan
- B Gujarat and Maharashtra
- C Gujarat, Maharashtra, Rajasthan and Madhya Pradesh
- D Gujarat and Daman and Diu

Answer: C

Question 47

In which way the President can assign any of the functions of the Union Government to the State Government ?

- A In his discretion
- B In consultation with the Chief Justice of India
- C In consultation with the Government of the State
- D In consultation with the State Governor

Answer: C

Join SSC Daily Quiz Telegram Group

Question 48

Where is the Indian National Rail Museum situated?

- A Delhi
- B Uttar Pradesh
- C Punjab
- D Himachal Pradesh

Answer: A

Question 49

Which of the following is not true about Ajanta Caves?

- A They are in Maharashtra
- B They are decorated with Buddhist Art
- C They depict the techniques used in Ancient India
- D They do not contain paintings of flora and fauna

Answer: C

Question 50

Who was the founder of Arya Samaj?

- A Acharya Narendra Dev
- B Dayanand Saraswati
- C Raja Ram Mohan Roy
- D Acharya Vinoba Bhave

Answer: B

SSC CGL Free Mock Test

Mathematics

Instructions

For the following questions answer them individually

Question 51

A, B and C can work together for Rs. 550/- A and B together are to do $\frac{7}{11}$ of the work. The share of C should be?

- A Rs. 200
- B Rs. 300
- C Rs. 400
- D Rs. 450

Answer: A

Explanation:

If A and B are supposed to do $\frac{7}{11}$ of the work, then C will do $\frac{4}{11}$ of the work.

Hence, Share of C = $\frac{4}{11} \times 550 = Rs.200$

125 SSC CGL Mocks for just Rs. 199

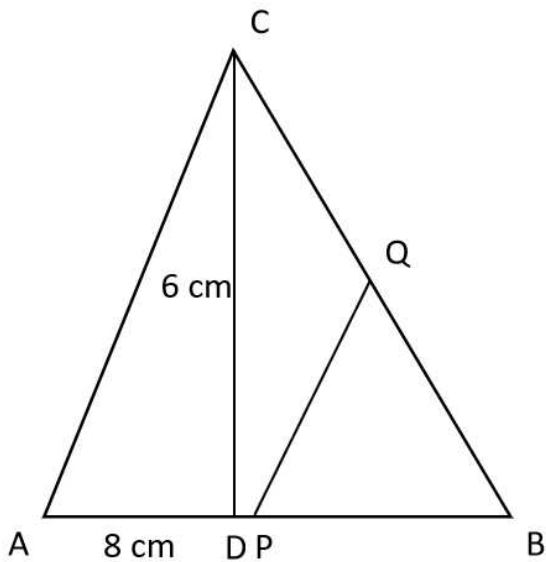
Question 52

In ΔABC , the height CD intersects AB at D. The midpoints of AB and BC are P and Q respectively. If AD = 8 cm and CD = 6 cm, then the length of PQ is?

- A 3 cm
- B 7 cm
- C 9 cm
- D 5 cm

Answer: D

Explanation:



$AD = 8 \text{ cm}, CD = 6 \text{ cm}.$

Then, $AC = \sqrt{8^2 + 6^2} = \sqrt{64 + 36} = \sqrt{100} = 10 \text{ cm}.$

A straight line joining through mid points of two sides of a triangle is always parallel to the third side and half of the third side.

$$PQ = \frac{AC}{2} = \frac{10}{2} = 5 \text{ cm}.$$

Question 53

The price of a chair is Rs. 500. It has been sold at two successive discounts of 10% each. What is its selling price?

- A Rs. 400
- B Rs. 405
- C Rs. 415
- D Rs. 425

Answer: B

Question 54

The percent profit made when an article is sold for Rs. 78 is twice as much as when it is sold for Rs. 69, the cost price of the article is?

- A Rs. 60
- B Rs. 51
- C Rs. 55.50
- D Rs. 70

Answer: A

SSC CGL Previous Papers (DOWNLOAD PDF)

Question 55

In a Village panchayat society 574 names are enlisted as 'below poverty level'. If 14% of the villagers are below poverty level, the total number of villagers is?

- A 4100

- B 4200
- C 4000
- D 3800

Answer: A

Question 56

A train 240 meters in length crosses a telegraph post in 16 seconds. The speed of the train is?

- A 50 Km/hr
- B 52 Km/hr
- C 54 Km/hr
- D 56 Km/hr

Answer: C

Question 57

If $a^2 + 1 = a$, then the value of a^3 is

- A 0
- B 1
- C -1
- D 2

Answer: C

Explanation:

$$a^2 + 1 = a$$

$$a^2 - a = -1 \text{ and } a^2 = a - 1$$

Therefore

$$a^3 = a^2 \cdot a$$

$$= (a - 1) a$$

$$= a^2 - a$$

$$= -1$$

25 SSC CHSL Mocks for just Rs. 149

Question 58

If $x+3y=-3x+y$, then $\frac{x^2}{2y^2}$ is equal to

- A $\frac{1}{8}$
- B $\frac{1}{2}$
- C $\frac{1}{4}$

D 4

Answer: A

Explanation:

$$x + 3y = -3x + y$$

$$4x = -2y$$

$$x = -\frac{y}{2}$$

Therefore

$$\frac{x^2}{2y^2} = \frac{\frac{y^2}{4}}{2y^2} = \frac{y^2}{4 \times 2y^2} = \frac{1}{8}$$

Question 59

From an external point two tangents to a circle are drawn. The chord passing through the points of contact subtends an angle 72° at the centre. The angle between the tangents is?

A 36°

B 72°

C 108°

D 144°

Answer: C

Question 60

Length of three line segments is given. Is construction of a triangle possible with the segments in the given cases?

A 8 cm, 7 cm, 18 cm

B 8 cm, 15 cm, 17 cm

C 10 cm, 6 cm, 4 cm

D 8 cm, 10 cm, 20 cm

Answer: B

SSC CGL Tier-2 Previous Papers PDF

Question 61

If $\sin\theta + \operatorname{cosec}\theta = 2$, then the value of $\sin^{-7}\theta + \operatorname{cosec}^7\theta$ is

A 2^7

B 2^{-7}

C 2

D 2^{-1}

Answer: C

Explanation:

$$\sin\theta + \sin\theta = 2$$

$$\sin^2\theta + 1 = 2\sin\theta$$

$$\sin^2\theta - 2\sin\theta + 1 = 0$$

$$(\sin\theta - 1)^2 = 0$$

$$\sin\theta = 1$$

$$\Rightarrow \theta = 90^\circ$$

Substituting $\theta = 90^\circ$

$$\text{Then, } \sin^{-7}\theta + \operatorname{cosec}^7\theta = 1^{-7} + 1^7 = 1 + 1 = 2$$

Question 62

A man has some hens and some cows. If the total number of heads of hens and cows together is 50 and the number of feet of hens and cows together is 142, then the number of cows is

- A 21
- B 25
- C 27
- D 29

Answer: A

Question 63

In a class, average height of all students is 'a' cms. Among them, average height of 10 students is 'b' cms and the average height of the remaining students is 'c' cms. Find the number of students in the class. (Here $a > c$ and $b > c$)

A $\frac{a(b-c)}{(a-c)}$

B $\frac{(b-c)}{(a-c)}$

C $\frac{(b-c)}{10(a-c)}$

D $\frac{10(b-c)}{(a-c)}$

Answer: D

SSC CGL Important Questions PDF

Question 64

The simplified value of $\frac{3\sqrt{7}}{\sqrt{5}+\sqrt{2}} - \frac{5\sqrt{5}}{\sqrt{2}+\sqrt{7}} + \frac{2\sqrt{2}}{\sqrt{7}+\sqrt{5}}$ is

- A 0
- B 1
- C 5
- D 6

Answer: A

Explanation:

$$\begin{aligned} & \frac{3\sqrt{7}}{\sqrt{5}+\sqrt{2}} - \frac{5\sqrt{5}}{\sqrt{7}+\sqrt{2}} + \frac{2\sqrt{2}}{\sqrt{7}+\sqrt{5}} \\ &= \frac{3\sqrt{7}}{\sqrt{5}+\sqrt{2}} \times \frac{\sqrt{5}-\sqrt{2}}{\sqrt{5}-\sqrt{2}} - \frac{5\sqrt{5}}{\sqrt{7}+\sqrt{2}} \times \frac{\sqrt{7}-\sqrt{2}}{\sqrt{7}-\sqrt{2}} + \frac{2\sqrt{2}}{\sqrt{7}+\sqrt{5}} \times \frac{\sqrt{7}-\sqrt{5}}{\sqrt{7}-\sqrt{5}} \\ &= \frac{3\sqrt{7}(\sqrt{5}-\sqrt{2})}{3} - \frac{5\sqrt{5}(\sqrt{7}-\sqrt{2})}{5} + \frac{2\sqrt{2}(\sqrt{7}-\sqrt{5})}{2} \\ &= \sqrt{35} - \sqrt{14} - \sqrt{35} + \sqrt{10} + \sqrt{14} - \sqrt{10} = 0 \end{aligned}$$

Question 65

If $(a + b - 6)^2 + a^2 + b^2 + 1 + 2b = 2ab + 2a$, then the value of a is

- A 7
- B 6
- C 3.5
- D 2.5

Answer: C

Question 66

Two circles of radii 17 cm and 8 cm are concentric. The length of a chord of greater circle which touches the smaller circle is

- A 15 cm
- B 16 cm
- C 30 cm
- D 34 cm

Answer: C

1500 + Free Must Solved SSC Questions (With Solutions)

Question 67

The least six digit number which is a perfect square is

- A 100489
- B 100000
- C 100256
- D 100225

Answer: A

Question 68

The percentage change of a number when it is first decreased by 10% and then increased by 10% is

- A 0.1 % increase
- B 1 % decrease
- C 0.1 % decrease

D No changes

Answer: B

Explanation:

Let the number be 100.

Decreased number = 90% of 100 = 90.

Increased number = 110% of 90 = 99.

$$100 - 99$$

Percentage change = $\frac{100 - 99}{100} \times 100 = 1\%$.

Question 69

Find the angular elevation of the sun when the shadow of a 15m long pole is $\frac{15}{\sqrt{3}}$ metres

A 45°

B 60°

C 30°

D 90°

Answer: B

General Science Notes for SSC CGL

Question 70

If $2y \cos\theta = x \sin\theta$ and $2x \sec\theta - y \operatorname{cosec}\theta = 3$ then what is the value of $x^2 + 4y^2$?

A 4

B 1

C 2

D 5

Answer: A

Question 71

The difference between compound interest and simple interest on an amount of Rs. 15,000 for 2 years is Rs. 96. The rate of interest per annum is?

A 6%

B 7%

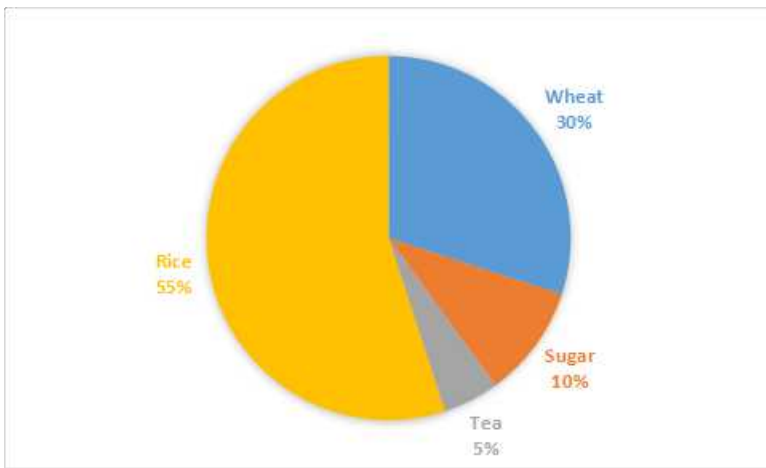
C 8%

D 9%

Answer: C

Instructions

In the given Pie-chart, the comparative study of the production of Rice, Wheat, Sugar and Tea of a country is given. Study the Pie-Chart and answer the following questions.



Question 72

From this diagram, the ratio of sum of wheat and sugar production to difference in production of rice and tea is

- A 4:5
- B 5:4
- C 6:1
- D 1:6

Answer: A

Free SSC Study Material (18,000 Solved Questions)

Question 73

The production of rice and tea is more/greater than production of wheat by-

- A 50%
- B 100%
- C 75%
- D 66.6%

Answer: B

Question 74

The Central angle of Wheat % is

- A 48°
- B 98°
- C 110°
- D 108°

Answer: D

Explanation:

The percentage value of Wheat = 30%

For 100%, Angle is 360°
 30×360

Then, for 30%, Angle = $\frac{30}{100} \times 360 = 108^\circ$.

Question 75

The total production of Rice, Wheat, sugar and Tea (In Kgs) is 500000 Kgs. The production of Rice in the country is

- A 175000 Kg
- B 395000 kg
- C 275000 Kg
- D 27500 Kg

Answer: C

SSC Exam Free Videos (Youtube)

English

Instructions

For the following questions answer them individually

Question 76

In the following question, out of the four alternatives, choose the word which best expresses the meaning of the given word and click the button corresponding to it.

CONTRABAND

- A BURGLED
- B SMUGGLED
- C BAFFLED
- D JUGGLED

Answer: B

SSC Free Preparation App

Question 77

In the following question, out of the four alternatives, choose the word which is opposite in meaning to the given word and click the button corresponding to it.

LENIENT

- A STRICT
- B SOLID
- C FORGIVING
- D STOIC

Answer: A

Question 78

Four words are given, out of which only one word is spelt correctly. Choose the correctly spelt word and click the button corresponding to it.

- A Scarety
- B Scarcity
- C Scarsity
- D Scarecity

Answer: B

Question 79

In the following questions, one part of the sentence may have an error. Find out which part of the sentence has an error and click the button corresponding to it. If the sentence is free from error, click the "No error" option.

He was(a) / very kind enough (b) / to invite me (c) / No Error(d).

- A He was
- B very kind enough
- C to invite me
- D No Error

Answer: B

Daily Free SSC Practice Set

Question 80

In the following questions, one part of the sentence may have an error. Find out which part of the sentence has an error and click the button corresponding to it. If the sentence is free from error, click the "No error" option.

Police reports claim that (a) / substantial seizure of cocaine have been made(b) / in the last two months.(c) /No Error(d).

- A Police reports claim that
- B substantial seizure of cocaine have been made
- C in the last two months
- D No Error

Answer: B

Question 81

In the following questions, one part of the sentence may have an error. Find out which part of the sentence has an error and click the button corresponding to it. If the sentence is free from error, click the "No error" option.

Every conceivable race and nationality(a) / had its shared of suffering(b) / in the world wars (c)/No Error(d).

- A Every conceivable race and nationality
- B had its shared of suffering
- C in the world wars

D No Error

Answer: B

Question 82

The sentences given with blanks are to be filled with an appropriate word(s). Four alternatives are suggested for each question. For each question, choose the correct alternative and click the button corresponding to it.

She _____ him angrily because he made the floor dirty with his muddy shoes.

A scold

B scolds

C scolded

D scolding

Answer: C

SSC CGL Free Online Coaching

Question 83

The sentences given with blanks are to be filled with an appropriate word(s). Four alternatives are suggested for each question. For each question, choose the correct alternative and click the button corresponding to it.

He walked along the road wondering what _____ happened and where all the people had gone.

A had

B has

C have

D it

Answer: A

Question 84

The sentences given with blanks are to be filled with an appropriate word(s). Four alternatives are suggested for each question. For each question, choose the correct alternative and click the button corresponding to it.

The criminal was _____ lest he should escape.

A fetid

B fettered

C fettle

D feted

Answer: B

Question 85

In each of the questions, four alternatives are given for the Idiom/Phrase. Choose the alternative which best expresses the meaning of the Idiom/Phrase and click the button corresponding to it.

Drive home

- A Find one's roots
- B Emphasise
- C Refer
- D Draw

Answer: B

SSC CHSL Previous Question papers (download pdf)

Question 86

In each of the questions, four alternatives are given for the Idiom/Phrase. Choose the alternative which best expresses the meaning of the Idiom/Phrase and click the button corresponding to it.

To end in smoke

- A End without any practical result
- B End with positive result
- C Die in a burning house
- D Risk everything in a single venture

Answer: A

Question 87

In each of the questions, four alternatives are given for the Idiom/Phrase. Choose the alternative which best expresses the meaning of the Idiom/Phrase and click the button corresponding to it.

A left handed compliment

- A A subtle rebuke
- B Wholesome praise
- C An ambiguous compliment
- D A mild compliment

Answer: C

Question 88

Out of the four alternatives, choose the one which can be substituted for the given words/sentences and click the button corresponding to it.

Experts who scientifically study insects

- A Gerontologists
- B Pathologists
- C Entomologists
- D Ornithologists

Answer: C

Free SSC Study Material (18,000 Solved Questions)

Question 89

Out of the four alternatives, choose the one which can be substituted for the given words/sentences and click the button corresponding to it.

One who pretends to be what he is not

- A Hypocrite
- B Pessimist
- C Optimist
- D Infallible

Answer: A

Question 90

Out of the four alternatives, choose the one which can be substituted for the given words/sentences and click the button corresponding to it.

A paper/story/poem first written out by hand

- A Handicraft
- B Manuscript
- C Handiwork
- D Thesis

Answer: B

Question 91

A sentence/a part of the sentence is underlined. Four alternatives are given to the underlined part which will improve the sentence. Choose the correct alternative and click the button corresponding to it. In case no improvement is needed, click the button corresponding to "No improvement".

The interview came alive by satellite from Hollywood

- A came as live
- B came live
- C came up live
- D No improvement

Answer: B

Latest Job Updates on Telegram - Join here

Question 92

A sentence/a part of the sentence is underlined. Four alternatives are given to the underlined part which will improve the sentence. Choose the correct alternative and click the button corresponding to it. In case no improvement is needed, click the button corresponding to "No improvement".

There was little he could do to save his battered reputation

- A salvage
- B wreck
- C destroy
- D No improvement

Answer: A

Explanation:

'Salvage' is the most appropriate word in the given sentence in place of 'save'. 'Salvage' means to recover.

Question 93

A sentence/a part of the sentence is underlined. Four alternatives are given to the underlined part which will improve the sentence. Choose the correct alternative and click the button corresponding to it. In case no improvement is needed, click the button corresponding to "No improvement".

It is much too important to be made a joke of

- A too much important
- B too many important
- C very much important
- D No improvement

Answer: D

Question 94

A sentence/a part of the sentence is underlined. Four alternatives are given to the underlined part which will improve the sentence. Choose the correct alternative and click the button corresponding to it. In case no improvement is needed, click the button corresponding to "No improvement".

If he wants farther help, send him to me

- A further
- B much
- C best
- D No improvement

Answer: A

Join SSC Daily Quiz Telegram Group

Question 95

A sentence/a part of the sentence is underlined. Four alternatives are given to the underlined part which will improve the sentence. Choose the correct alternative and click the button corresponding to it. In case no improvement is needed, click the button corresponding to "No improvement".

He jumped on the lake

- A in the
- B into the

- C onto the
- D No improvement

Answer: B

Instructions

A passage is given with 5 questions following it. Read the passage carefully and choose the best answer to each question out of the four alternatives and click the button corresponding to it.

Some languages are used by a few people. Others, such as Mandarin Chinese and English, are spoken by millions. Many people speak two or more languages. They may use one language at home with family and friends, and another at work or school. Regional variations of language are known as dialects. The Anglo-Saxons, who conquered Britain at the end of the Roman Empire, spoke a Germanic language, which later became English. Other Germanic languages include Danish, Dutch, German and Swedish. English also contains French-derived words after it was ruled by French-speaking kings following the Norman Conquest.

Question 96

Mandarin Chinese is spoken by _____people.

- A little
- B few
- C many
- D big

Answer: C

Question 97

A person who is good at foreign languages is known as

- A Virtuoso
- B Linguist
- C Ventriloquist
- D Scholar

Answer: B

SSC CGL Free Mock Test

Question 98

_____are regional variations of a language

- A English
- B Mandarin Chinese
- C Home language
- D Dialects

Answer: D

Question 99

English also included French words _____ the Norman Conquest

- A after
- B prior
- C before
- D during

Answer: A

Question 100

_____ is part of a Germanic language.

- A Britain
- B Anglo-Saxons
- C English
- D Roman Empire

Answer: C

125 SSC CGL Mocks for just Rs. 199

SSC CGL Free Mock Test

125 SSC CGL Mocks for just Rs. 199

SSC CGL Previous Papers (DOWNLOAD PDF)

25 SSC CHSL Mocks for just Rs. 149

SSC CGL Tier-2 Previous Papers PDF

SSC CGL Important Questions PDF

1500 + Free Must Solved SSC Questions (With Solutions)

General Science Notes for SSC CGL

Free SSC Study Material (18,000 Solved Questions)

SSC Exam Free Videos (Youtube)

SSC Free Preparation App

Daily Free SSC Practice Set

SSC CGL Free Online Coaching

SSC CHSL Previous Question papers (download pdf)

Free SSC Study Material (18,000 Solved Questions)

Latest Job Updates on Telegram - Join here

Join SSC Daily Quiz Telegram Group