



SSC CGL 2010 Tier 1 - Shift 1

All rights reserved. No part of this publication may be reproduced, distributed, or transmitted in any form or by any means, electronic, mechanical, photocopying, recording or otherwise, or stored in any retrieval system of any nature without the permission of cracku.in, application for which shall be made to support@cracku.in

Reasoning

Instructions

Directions : In each of the following questions, select the related letters/word/number from the given alternatives.

Question 1

ACEG:SUWY::BDFH:?

- A TVZX
- B RTZV
- C TVXZ
- D RTVZ

Answer: C

Explanation:

Observing ACEG and BDFH we deduce the analogy that the alphabets are increased by 1
 $A + 1 = B, C + 1 = D, E + 1 = F, G + 1 = H$
Therefore applying the same analogy to SUWY we get
 $S + 1 = T, U + 1 = V, W + 1 = X, Y + 1 = Z$

SSC CGL Free Mock Test

Question 2

M/AC:N/AD::O/AE:?

- A P/AF
- B Q/AB
- C P/AC
- D R/AD

Answer: A

Explanation:

Observing the question we can deduce the analogy that the alphabets at the extremes are increasing by 1 and "/A" remains constant.
Therefore $O + 1 = P, E + 1 = F$

P/AF

Question 3

5:27::9:?

- A 83
- B 81
- C 36
- D 18

Answer: A

Explanation:

$5^2 + 2 = 25 + 2 = 27$
 $9^2 + 2 = 81 + 2 = 83$

Question 4

6:12::10:?

- A 6
- B 17
- C 20
- D 30

Answer: C

Explanation:

$$\frac{6}{12} = \frac{10}{a}$$

So, $a = \frac{10 \times 12}{6} = 20$

125 SSC CGL Mocks for just Rs. 199

Question 5

ABE:8::KLO:?

- A 37
- B 39
- C 38
- D 36

Answer: C

Explanation:

Analogy - Alphanumeric series

So A = 1, B = 2, E = 5
 $A + B + E = 8$
Therefore K = 11, L = 12, O = 15
 $K + L + O = 38$

Question 6

Sty:Pig::Byre:?

- A Eagle
- B Cow
- C Tiger
- D Hen

Answer: B

Explanation:

Pig lives in a sty and Cow lives in a Byre

Question 7

Patrol:Security::Insurance:?

- A Money
- B Policy
- C Savings
- D Protection

Answer: D

Explanation:

First ensures the second

Patrol ensure security, similarly insurance ensures protection.

SSC CGL Previous Papers (DOWNLOAD PDF)

Question 8

ADBC:EHFG::ILJK:?

- A MOPN
- B MPNO
- C ORPQ
- D MPON

Answer: B

Explanation:

ADBC : EHFG

$A + 4 = E$

$D + 4 = H$

$B + 4 = F$

$C + 4 = G$

Following the same analogy

$I + 4 = M$

$L + 4 = P$

$J + 4 = N$

$K + 4 = O$

Instructions

Directions :In each of the following questions, select the one which is different from the other three responses.

Question 9

- A 25,36
- B 144, 169
- C 100, 121
- D 9,64

Answer: D

Explanation:

$25, 36 = 5^2, 6^2$

$144, 169 = 12^2, 13^2$

$100, 121 = 10^2, 11^2$

$9, 64 = 3^2, 8^2$

The first and the second number in all of the options are consecutive except for the fourth option. Hence option four is the right choice.

Question 10

- A Heat
- B Light
- C Bulb
- D Electricity

Answer: C

Explanation:

Heat, light and electricity can only be felt, but bulb can be seen. Hence bulb is the the odd one.

25 SSC CHSL Mocks for just Rs. 149

Question 11

- A Wave
- B Current
- C Tide
- D Storm

Answer: C

Explanation:

Wave, current and tide are related to ocean waves, but storm occurs in the sky

Question 12

- A X
- B Y
- C H
- D D

Answer: B

Explanation:

$X + 4 = D$

$D + 4 = H$

$H + 4 = L \neq Y$

Hence option B is the right choice.

Question 13

- A ZKXJ
- B CMAL
- C TGRF

D FRTK

Answer: D

Explanation:

ZKXJ

Z - 2 = X

K - 1 = J

CMAL

C - 2 = A

M - 1 = L

TGRF

T - 2 = R

G - 1 = F

FRTK

F - 2 = D \neq T

R - 1 = Q \neq K

SSC CGL Tier-2 Previous Papers PDF

Question 14

A ABJNM

B QRTUZ

C IXYOQ

D WFGOP

Answer: C

Explanation:

In ABJNM there are two pairs of consecutive alphabets which are AB and MN (reversed).

Similarly in options B and D there are two pairs of consecutive alphabets which are QR, TU in option B and WF and OP in option D. But in option C there is only one pair of consecutive alphabets XY, hence it is the right choice.

Instructions

For the following questions answer them individually

Question 15

Arrange the following words according to the dictionary ?

1. Inventory 2. Involuntary 3. Invisible 4. Invariable 5. Investigate

A 4, 2, 5, 3, 1

B 4, 5, 1, 3, 2

C 2, 5, 4, 1, 3

D 4, 1, 5, 3, 2

Answer: D

Explanation:

Since the first three alphabets of all the words are inv, we need to start checking with the fourth alphabet.

4th word has 'a' as the fourth alphabet so it is the first in the order.

1st and 5th have 'e' as their fourth letter, so we have to check their fifth letters which are 'n' and 's'.

'n' comes before 's', hence it is second in the order and fifth is third in the order.

In the 3rd word 'i' is the fourth letter and it comes fourth in the order.

Hence the required order is 4,1,5,3,2

Question 16

Find the next two letters in the given series.

B C E H L ? ?

- A XY
- B MN
- C QW
- D OP

Answer: C

Explanation:

The order is $B + 1 = C$

$$C + 2 = E$$

$$E + 3 = H$$

$$H + 4 = L$$

So the next term would be $L + 5 = Q$

$$Q + 6 = W$$

SSC CGL Important Questions PDF

Question 17

Which one set of letters when sequentially placed at the gaps in the given letter series shall complete it ?

a_ b_ a_ _n_ bb_ abbn

- A abnabb
- B bnbban
- C bnbbna
- D babban

Answer: B

Explanation:

The pattern is abbn

So the first two blanks in a_b_ should be filled with b and n

The next two blanks a_ _ n should be filled with b and b

The next two blanks in _bb_ should be filled with a and n.

So the required letters are b,n,b,b,a and n.

Question 18

Find out a set of numbers amongst the four sets of numbers given in the alternatives, which is the most similar to the numbers given in the question. Given:(6, 30, 90)

- A 6, 42, 86
- B 7, 42, 218
- C 6, 24, 70
- D 8, 48, 192

Answer: D

Explanation:

The relation between 6,30 and 90 is $6 \times 5 = 30, 6 \times \frac{6}{2} \times 5 = 90$

So verifying option D, we get $8 \times 6 = 48, 8 \times \frac{8}{2} \times 6 = 192$

Question 19

Which one number is wrong in the given series?

126, 98, 70, 41, 14

A 98

B 70

C 126

D 41

Answer: D

Explanation:

Sum of the alphabets in each of the number is

$$1+2+6 = 9$$

$$9 + 8 = 17, 1 + 7 = 8$$

$$7 + 0 = 7$$

$$4 + 1 = 5 \neq 6$$

$$1 + 4 = 5$$

Hence fourth number is the odd one in the series and option D is the right choice.

1500 + Free Must Solved SSC Questions (With Solutions)

Question 20

Arrange the following in the meaningful/logical order

1. Exhaust 2. Night 3. Day 4. Sleep 5. Work

A 1,3,5,2,4

B 3,5,1,4,2

C 3, 5, 1, 2, 4

D 3, 5, 2, 1, 4

Answer: C

Explanation:

Everything begins with the day.

We go to work and get exhausted by night. Then go to sleep.

Hence the order is 3,5,1,2,4.

Instructions

Directions :In each of the following questions, a series is given with one term missing. Choose the correct alternative from the given ones that will complete the series.

Question 21

3, 4, 7, 11, 18, 29,?

- A 31
- B 39
- C 43
- D 47

Answer: D

Explanation:

The series is fibonacci with the succeeding number being the sum of two preceding numbers.

$$3 + 4 = 7$$

$$4 + 7 = 11$$

$$7 + 11 = 18$$

$$11 + 18 = 29$$

$$18 + 29 = 47$$

Question 22

AGMSY, CIOUA, EKQWC, ? , IOUAG, KQWCI

- A GMSYE
- B FMSYE
- C GNSYD
- D FMYES

Answer: A

Explanation:

AGMSY, CIOUA, EKQWC, ? , IOUAG, KQWCI

$$A + 2 = C, G + 2 = I, M + 2 = O, S + 2 = U, Y + 2 = A$$

$$C + 2 = E, I + 2 = K, O + 2 = Q, U + 2 = W, A + 2 = C$$

$$E + 2 = G, K + 2 = M, Q + 2 = S, W + 2 = Y, C + 2 = E$$

So GMSYE is the right answer and option A is the right choice.

General Science Notes for SSC CGL

Question 23

975, 864, 753, 642, ?

- A 431
- B 314
- C 531
- D 532

Answer: C

Explanation:

$$975 - 111 = 864, 864 - 111 = 753, 753 - 111 = 642, 642 - 111 = 531$$

Question 24

8, 24, 12, ? , 18, 54

- A 28
- B 36
- C 46
- D 38

Answer: B

Explanation:

The pattern in $8 \times 3 = 24$, $\frac{24}{2} = 12$, $12 \times 3 = 36$, $\frac{36}{2} = 18$, $18 \times 3 = 54$

So 36 should come in place of the question mark and option B is the right choice.

Instructions

For the following questions answer them individually

Question 25

Ashok's mother was 3 times as old as Ashok 5 years ago. After 5 years she will be twice as old as Ashok. How old is Ashok today ?

- A 10 years
- B 15 years
- C 20 years
- D 25 years

Answer: B

Explanation:

Let Ashok's present age be A and his mother's present age be M

Five year ago they are A-5, M-5

So $M - 5 = 3(A - 5)$

$M + 5 = 2(A + 5)$

Subtracting both the equations above we get $A = 15$

Substituting $A = 15$ in equation 1 we get, $M = 35$

Free SSC Study Material (18,000 Solved Questions)

Question 26

M is the son of P. Q is the granddaughter of O, who is the husband of P. How is M related to O?

- A Son
- B Daughter
- C Mother
- D Father

Answer: A

Explanation:

M is the son of P and O is the husband of P, therefore M is the son of O.

Question 27

In a row of boys, Srinath is 7th from the left and Venkat is 12th from the right. If they interchange their positions, Srinath becomes 22nd from the left. How many boys are there in the row ?

- A 19
- B 31
- C 33
- D 34

Answer: C

Explanation:

After interchanging position 12th position from right will be 22nd position from left
Hence total no. of students will be $22+11 = 33$

Question 28

From the given alternative words, select the word which cannot be formed using the letters of the given word given:
IMPASSIONABLE

- A IMPASSABLE
- B IMPOSSIBLE
- C IMPASSIVE
- D IMPASSION

Answer: C

Explanation:

In option C, letter V couldn't be available from letters of word IMPASSIONABLE.

SSC Exam Free Videos (Youtube)

Question 29

Only one meaningful word can be formed by rearranging the letter of the given jumbled word. Find out that word.
Given: MUSPOPAPOTIH

- A METAMORPHIC
- B PHILANTHROPIST
- C HIPPOCAMPUS
- D HIPPOPOTAMUS

Answer: D

Explanation:

Only in option D, HIPPOPOTAMUS, all the letters are available in word MUSPOPAPOTIH

Question 30

Which number is wrong in the given series ?

1, 9, 25, 50, 81

- A 1
- B 25
- C 50

D 81

Answer: C

Explanation:

$$1^2 = 1$$

$$3^2 = 9$$

$$5^2 = 25$$

$$7^2 = 49 \text{ not } 50$$

$$9^2 = 81$$

Question 31

A bus leaves Delhi with half the number of women as men. At Meerut, ten men get down and five women get in. Now there are equal number of men and women. How many passengers boarded the bus initially at Delhi ?

A 36

B 45

C 15

D 30

Answer: B

Explanation:

let's say initially men were x so women will be $\frac{x}{2}$

After getting in and leaving bus men will be $x - 10$ and women will be $\frac{x}{2} + 5$

so $x - 10 = \frac{x}{2} + 5$

or $x = 30$ (men) and women will be 15

Total persons who boarded bus = 45

[SSC Free Preparation App](#)

Question 32

If the day before yesterday was Sunday, what day will it be three days after the day after tomorrow

A Sunday

B Monday

C Wednesday

D Saturday

Answer: A

Explanation:

Day before yesterday was Sunday, so today will be Tuesday and day after tomorrow will be Thursday.

3 days after Thursday will be Sunday.

Instructions

Directions : In the following question, one statement is given followed by two assumptions I and II. You have to consider the statement to be true even if it seems to be at variance from commonly known facts. You have to decide which of the given assumptions, if any, follow from the given statement.

Question 33

Statement: Politicians become rich by the votes of the people.

Assumptions:

- I. People vote to make politician rich.
- II. Politicians become rich by their virtue.

- A Only I is implicit
- B Only II is implicit
- C Both I and II are implicit
- D Both I and II are not implicit

Answer: D

Explanation:

Assumption 1 is indirectly stating the statement and assumption 2 is also not valid
Hence answer will be D.

Instructions

Directions :In the following question, two statements P and Q are given followed by four conclusions I II, III and IV. You have to consider the two statements to be true even if the seem to be at variance from commonly known facts. You have to decide which of the given conclusions, if any, follow the given statements.

Question 34

Statements:

- P. All men are women.
- Q. All women are crazy.

Conclusions:

- I. All men are crazy.
- II. All the crazy are men.
- III. Some of the crazy are men.
- IV. Some of the crazy are women

- A None of the conclusions follow
- B All the conclusions follow
- C Only I, III and IV follow
- D Only II and III follow

Answer: C

Explanation:

All men are subset of all women and all women are subset of all crazy.
So only conclusions 1,3 and 4 follows.

Daily Free SSC Practice Set

Instructions

For the following questions answer them individually

Question 35

If HOSPITAL is written as 32574618 in a certain code, how would POSTAL be written in that code?

- A 752618
- B 725618

C 725168

D 725681

Answer: B

Explanation:

From given word HOSPITAL

P-7

O-2

S-5

T-6

A-1

L-8

Question 36

Find the missing number from the given responses.

173 (24) 526 431 (18) 325 253 (?) 471

A 22

B 42

C 30

D 06

Answer: A

Explanation:

Number in bracket is sum of digits of number on its right and left part.

So missing number will be = $2+5+3+4+7+1 = 22$

Question 37

After interchanging \div and $+$, 12 and 18, which one of the following equations becomes correct?

A $(90 \times 18) + 18 = 60$

B $(18 + 6) \div 12 = 20$

C $(72 = 18) \times 18 = 72$

D $(12 + 6) \times 18 = 36$

Answer: B

Explanation:

After changing signs and numbers in option B it will be

$(12 \div 6) + 18 = 20$ which is balanced.

SSC CGL Free Online Coaching

Question 38

If SPARK is coded as TQBSL, what will be the code for FLAME ?

A GMBNF

B GNBNF

C GMCND

D GMBMF

Answer: A

Explanation:

SPARK is coded by taking every letter of it one ahead as TQBSL.

So for FLAME it will be GMBNF

Question 39

Find out the correct answer for the unsolved equation on the basis of the given equations. If $6 * 5 = 91$ $8 * 7 = 169$ $10 * 7 = 211$ then $11 * 10 = ?$

A 331

B 993

C 678

D 845

Answer: A

Explanation:

Given eq. follow a pattern like

$$6 * 5 = 6^2 + 5^2 + 6 \times 5 = 91$$

$$8 * 7 = 8^2 + 7^2 + 7 \times 8 = 169$$

$$\text{So } 11 * 10 = 11^2 + 10^2 + 11 \times 10$$

Question 40

A child is looking for his father. He went 90 metres in the east before turning to his right. He went 20 metres before turning to his right again to look for his father at his uncle's place 30 metres from this point. His father was not here. From here he went 100 metres to his north before meeting his father in a street. How far did the son meet his father from the starting point?

A 90 m

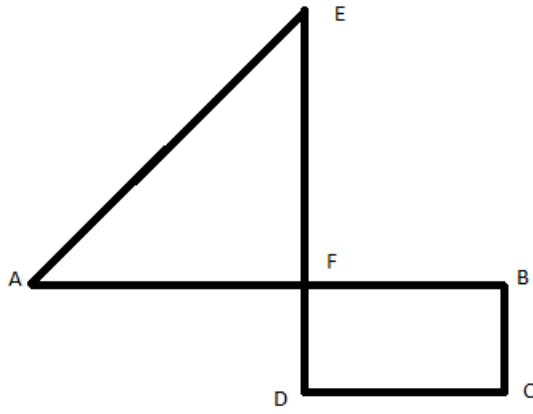
B 100 m

C 260 m

D 140 m

Answer: B

Explanation:



In above diagram A is starting point and E is point where he met his father.
 Here $AB = 90$, $CD = 30$, $DE=100$ so EF is 80 and AF is 60
 Hence AE will be 100 .

SSC CHSL Previous Question papers (download pdf)

Question 41

In the following question, A stands for any of the mathematical signs at different places, which are given as choices under each question. Select the choice with the correct sequence of signs which when substituted makes the question as a correct equation.
 $24 \text{ A } 4 \text{ A } 5 \text{ A } 4$

A $\times + =$

B $= \times +$

C $+ \times =$

D $= + \times$

Answer: B

Explanation:

With option B
 equation will be $24 = 4 \times 5 + 4$

Question 42

What is the number missing from the third target?
 $5 \ 9 \ 15 \ 16 \ 29 \ ? \ 49 \ 89 \ 147$

A 45

B 48

C 51

D 54

Answer: B

Question 43

In a classroom, there are 5 rows, and 5 children A, B, C, D and E are seated one behind the other in 5 separate rows as follows: A is sitting behind C, but in front of B. C is sitting behind E. D is sitting in front of E. The order in which they are sitting from the first row to the last is

- A DECAB
- B BACED
- C ACBDE
- D ABEDC

Answer: A

Explanation:

According to given question sitting arrangement will be

- B
- A
- C
- E
- D

Where first row is bottom one where D is present.

So order will be DECAB.

Free SSC Study Material (18,000 Solved Questions)

Question 44

Little wooden cubes each with a side of one inch are put together to form a solid cube with a side of three inches. This big cube is then painted red all over on the outside. When the big cube is broken up into the original little ones, how many cubes will have paint on two sides ?

- A 4
- B 8
- C 12
- D 0

Answer: C

Explanation:

To make a cube of side of 3 inch, total 27 cubes will be needed of 1 inch

And cubes having 2 side painted will be 2nd cube of 1st and 3rd row of every surface. Moreover in the middle row, there will be 2 cubes on both faces which have 2 sides painted

So total will be 12 small cubes having 2 side painted.

Question 45

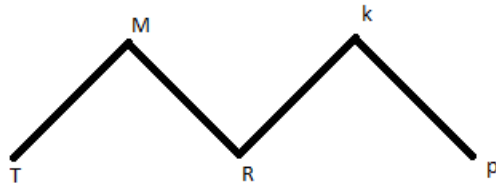
K is a place which is located 2 km away in the north-west direction from the capital P. R is another place that is located 2 km away in the south-west direction from K. M is another place and that is located 2 km away in the north-west direction from R. T is yet another place that is located 2 km away in the south-west direction from M. In which direction is T located in relation to P ?

- A South-west
- B North-west
- C West

D North

Answer: C

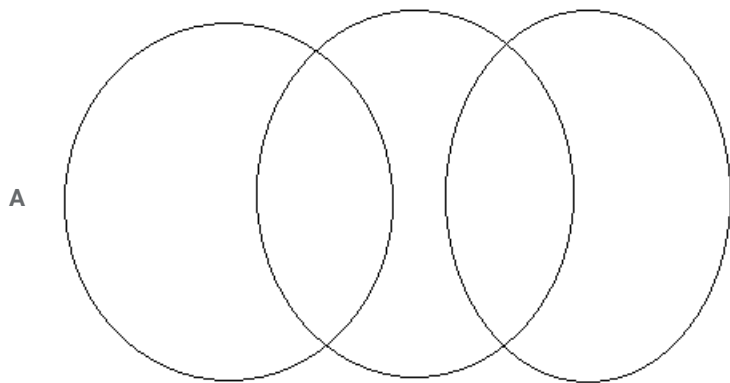
Explanation:



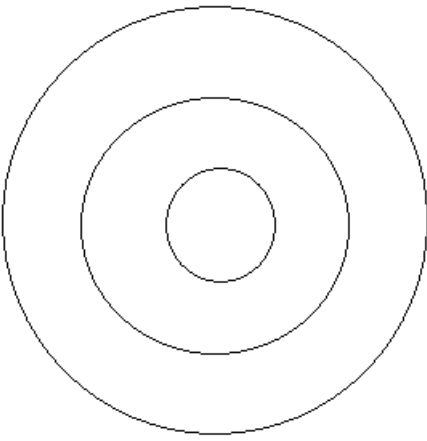
It can be clearly seen from the above diagram that T is in west direction to P.

Question 46

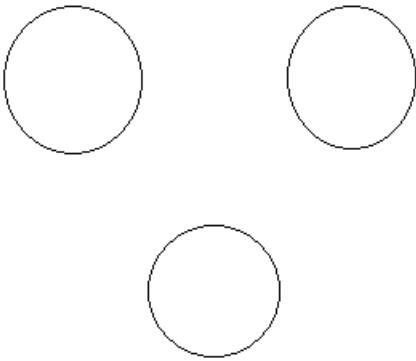
Find out which of the diagrams given in the alternatives correctly represents the relationship stated in the question. Sharks, Whales, Turtles.



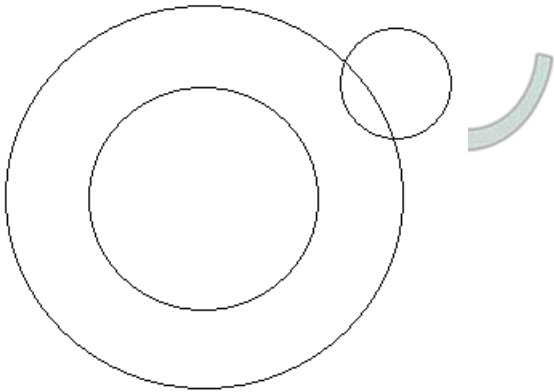
B



C



D



Answer: C

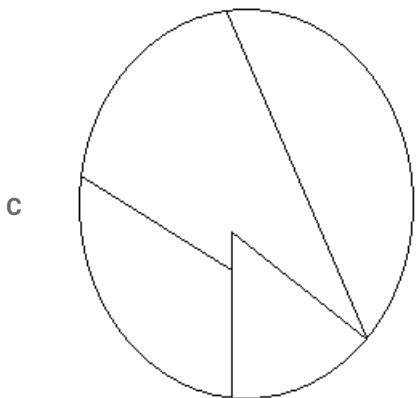
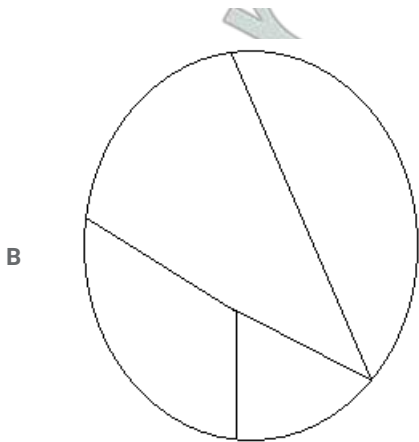
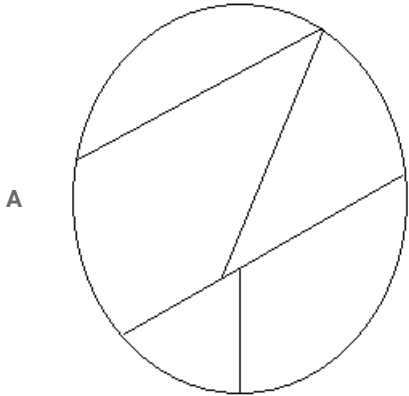
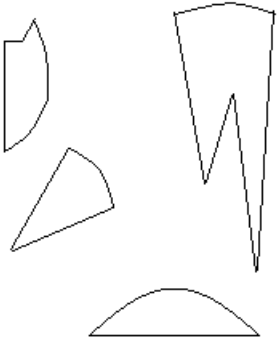
Explanation:

As sharkes , whales and turtles don't have anything in common , so option C will be more appropriate answer to this question.

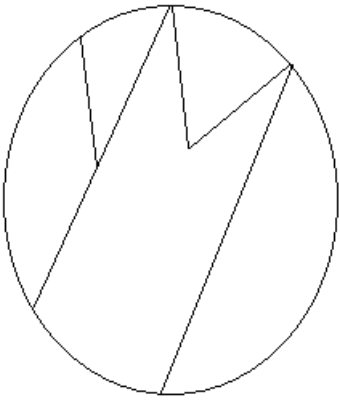
Latest Job Updates on Telegram - Join here

Question 47

In this question, among the four answer figures, which figure can be formed from the cut-pieces given below in the question figure.

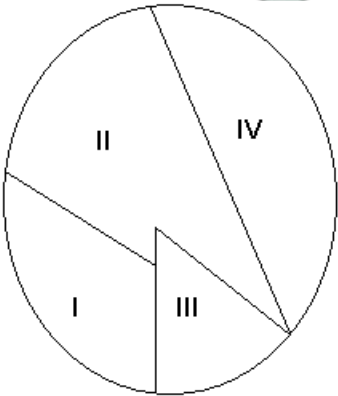


D



Answer: C

Explanation:



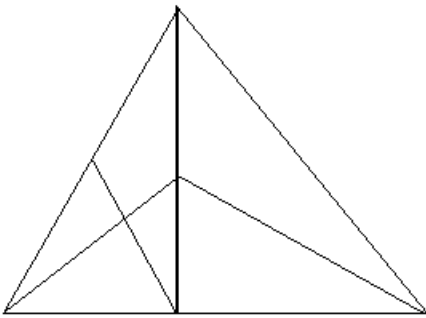
The first and the last option, have five figures while there are only 4 in the question figures.

Clearly, the third option is the correct choice as it contains all the figures as marked above.

=> Ans - (C)

Question 48

How many triangles are there in the following figure ?



A 11

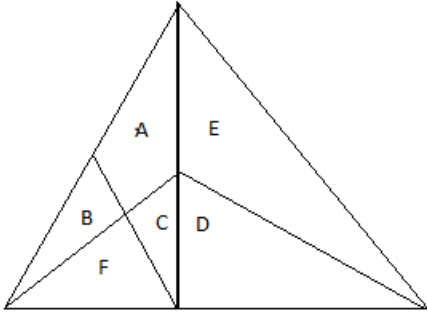
B 13

C 9

D 15

Answer: B

Explanation:



Triangles are:

B,C,F,D,E

Containing two triangles: BF, CF, DE, AB, AC

Containing three triangles: DCF

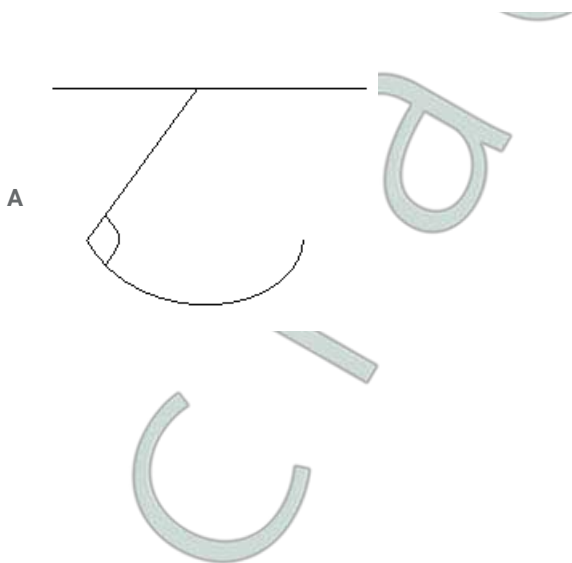
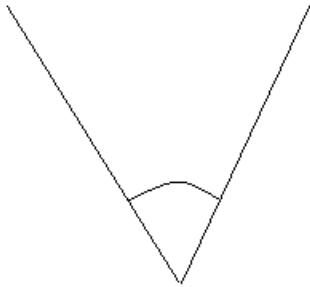
Containing four triangles: BCAF

Containing all small triangles : ABCDEF

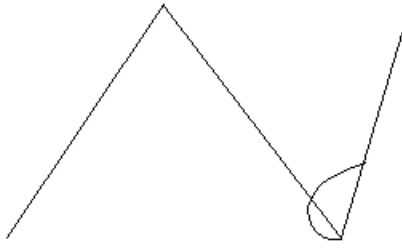
Total 13 triangles will be there.

Question 49

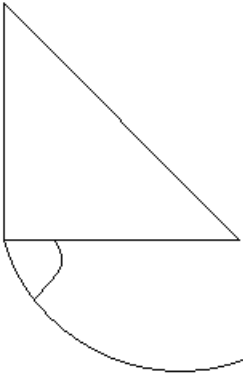
From the given answer figures, select the one in which the question figure is hidden/embedded in the same direction.



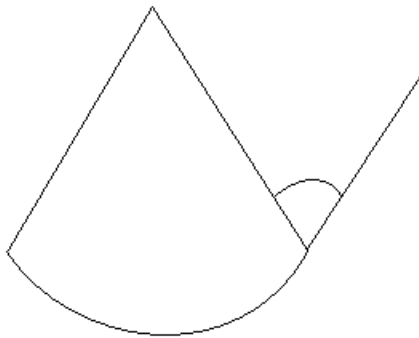
B



C



D



Answer: D

Explanation:

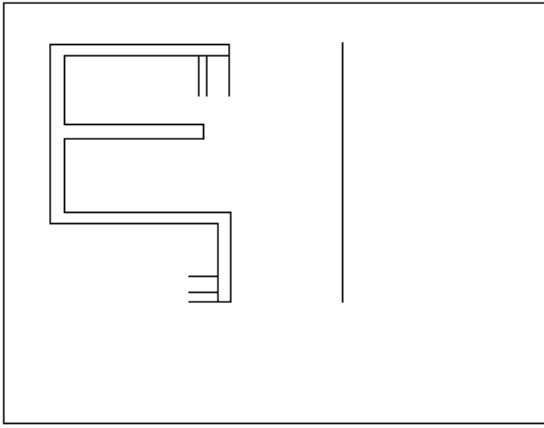
Only in option D it is embedded as given in question.



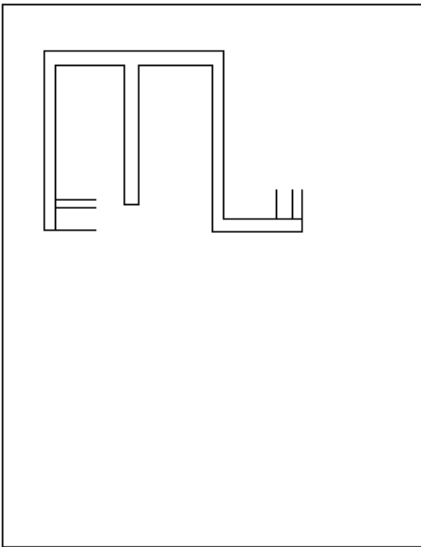
Join SSC Daily Quiz Telegram Group

Question 50

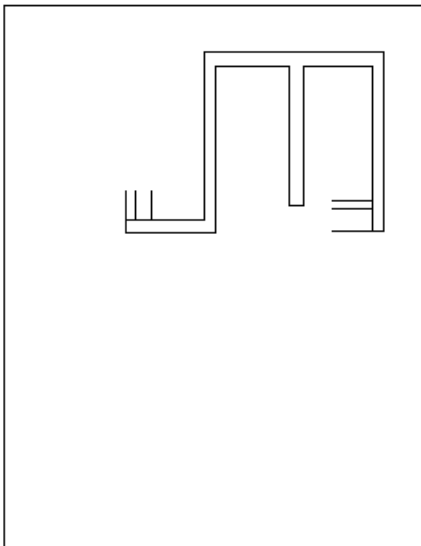
Which answer figure is the exact mirror image of the given question figure when the mirror is held from the right at PQ ?



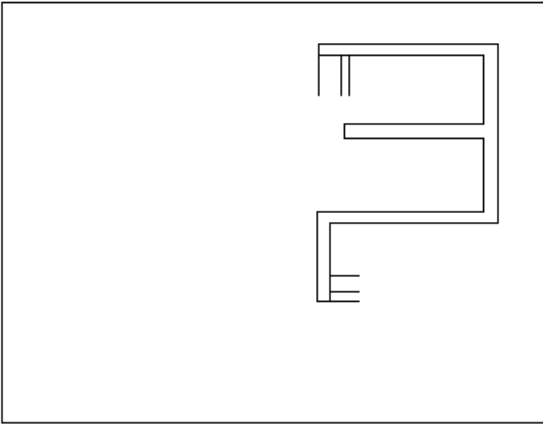
A



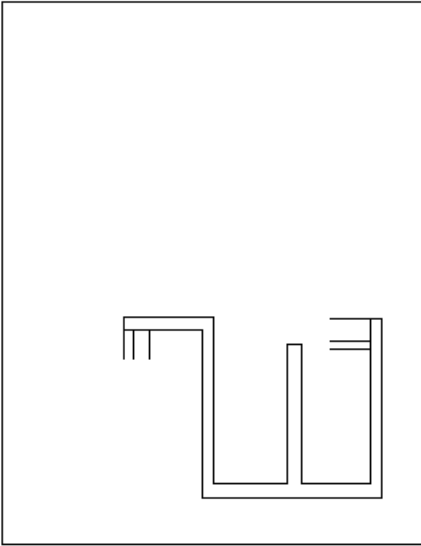
B



C



D



Answer: C

Explanation:

As we know in mirror image questions distance of a point remain same on both sides of mirror and right side of real object appear as left side and left side appear as right side.
Hence option C will be the answer.

SSC CGL Free Mock Test

General Awareness

Instructions

For the following questions answer them individually

Question 51

A concave lens always forms which image ?

- A real and erect
- B virtual and erect
- C real and inverted
- D virtual and inverted

Answer: B

125 SSC CGL Mocks for just Rs. 199

Question 52

Which vitamin requires cobalt for its activity?

- A Vitamin B12
- B Vitamin D
- C Vitamin B2
- D Vitamin A

Answer: A

Question 53

One of the constituents of tear gas is

- A Ethane
- B Ethanol
- C Ether
- D Chloropicrin

Answer: D

Question 54

The modulus of rigidity is the ratio of

- A longitudinal stress to longitudinal strain
- B Volume stress to volume strain
- C shear stress to shear strain
- D tensile stress to tensile strain

Answer: C

SSC CGL Previous Papers (DOWNLOAD PDF)

Question 55

The propagation of sound waves in a gas involves

- A adiabatic compression and rarefaction
- B isothermal compression and rarefaction
- C isochoric compression and rarefaction
- D isobaric compression and rarefaction

Answer: A

Question 56

An atomic clock is based on transitions in

- A Sodium
- B Caesium
- C Magnesium
- D Aluminium

Answer: B

Question 57

Plasma membrane in eukaryotic cells is made up of which bilayer?

- A Phospholipid
- B Lipoprotein
- C Phospholipo-protein
- D Phospho-protein

Answer: A

25 SSC CHSL Mocks for just Rs. 149

Question 58

Which one of the following is also called the 'power plants' of the cell ?

- A Golgi body
- B Mitochondrion
- C Ribosome
- D Lysosome

Answer: B

Question 59

What is the chemical name of vinegar ?

- A Citric acid
- B Acetic acid
- C Pyruvic acid
- D Malic acid

Answer: B

Question 60

Which of the following is not a property of heavy water?

- A Boiling point of heavy water is lower than that of ordinary water
- B Density of heavy water is higher than that of ordinary water

- C Freezing point of heavy water is higher than that of ordinary water
- D It produces corrosion

Answer: A

SSC CGL Tier-2 Previous Papers PDF

Question 61

Which biological process results in energy release?

- A Respiration
- B Photosynthesis
- C Ingestion
- D Absorption

Answer: A

Question 62

Animals living in the tree trunks are known as

- A Arboreal
- B Volant
- C Amphibious
- D Aquatic

Answer: A

Question 63

Arrange the following in chronological order:

1. Tughlaqs 2. Lodis 3. Saiyids 4. Ilbari Turks 5. Khiljis

- A 1, 2, 3, 4, 5
- B 5, 4, 3, 2, 1
- C 2, 4, 5, 3, 1
- D 4, 5, 1, 3, 2

Answer: D

SSC CGL Important Questions PDF

Question 64

The book titled 'The Indian War of Independence' was written by

- A Krishna Verma
- B Madame Cama

- C B.G. Tilak
- D V.D. Savarkar

Answer: D

Question 65

Who was the founder of the 'Servants of India Society'?

- A G.K. Gokhale
- B M.G. Ranade
- C B.G. Tilak
- D Bipin Chandra Pal

Answer: A

Question 66

The term 'Caste' was derived from which language

- A Portuguese
- B Dutch
- C German
- D English

Answer: A

1500 + Free Must Solved SSC Questions (With Solutions)

Question 67

The term 'Greater India' denotes

- A Political unity
- B Cultural unity
- C Religious unity
- D Social unity

Answer: B

Question 68

Formalised system of trading agreements with groups of countries is known as

- A Trading blocks
- B Trade ventures
- C Trade partners
- D Trade organizations

Answer: A

Question 69

Mahatma Gandhi was profoundly influenced by the writings of

- A Bernard Shaw
- B Karl Marx
- C Lenin
- D Leo Tolstoy

Answer: D

General Science Notes for SSC CGL

Question 70

Seismic sea waves which approach the coasts at greater force are known as:

- A Tides
- B Tsunami
- C Current
- D Cyclone

Answer: B

Question 71

Depression formed due to deflating action of winds are called?

- A Playas
- B Yardang
- C Ventifacts
- D Sand dunes

Answer: B

Question 72

Which land has maximum biodiversity?

- A Tropical
- B Temperate
- C Monsoonal
- D Equatorial

Answer: A

Free SSC Study Material (18,000 Solved Questions)

Question 73

If input frequency of a full wave rectifier be n , then output frequency would be:

- A $n/2$
- B n
- C $3n/2$
- D $2n$

Answer: D

Question 74

Heat transfer horizontally within the atmosphere is called

- A Conduction
- B Convection
- C Absorption
- D Advection

Answer: D

Question 75

Indian Standard Time relates to

- A 75.5° E longitude
- B 82.5° E longitude
- C 90.5° E longitude
- D 0° longitude

Answer: B

SSC Exam Free Videos (Youtube)

Question 76

Who is rightly called the 'Father of Local Self Government' in India ?

- A Lord Mayo
- B Lord Ripon
- C Lord Curzon
- D Lord Clive

Answer: B

Question 77

The Directive Principles of State Policy was adopted from the

- A British Constitution
- B Swiss Constitution
- C U.S. Constitution
- D Irish Constitution

Answer: D

Question 78

Which is the second nearest star to the Earth after the Sun ?

- A Vega
- B Sirius
- C Proxima Centauri
- D Alpha Centauri

Answer: C

SSC Free Preparation App

Question 79

The two forms of democracy are

- A Parliamentary and Presidential
- B Direct and Indirect
- C Monarchical and Republican
- D Parliamentary and King

Answer: A

Question 80

Which is an extra-Constitutional body ?

- A Language Commission
- B Planning Commission
- C Election Commission
- D Finance Commission

Answer: B

Question 81

The Prime Minister of India is

- A Elected
- B Appointed
- C Nominated
- D Selected

Answer: B

Daily Free SSC Practice Set

Question 82

Which is not an All India Service?

- A Indian Administration Service
- B Indian Police Service
- C Indian Foreign Service
- D Indian Forest Service

Answer: C

Question 83

The forest in Sunderban is called

- A Scrub jungle
- B Mangrove
- C Deciduous forest
- D Tundra

Answer: B

Question 84

Noise is measured in

- A Watt
- B REM
- C Centigrade
- D Decibel

Answer: D

SSC CGL Free Online Coaching

Question 85

Who among the following captured his third consecutive National Billiards title in the year 2009

- A Pankaj Advani
- B Devendra Joshi
- C Geet Sethi
- D Dhruv Sitawala

Answer: A

Question 86

The Messenger Satellite launched by NASA is to study

- A Mercury
- B Venus
- C Saturn
- D Jupiter

Answer: A

Question 87

What was the name of the ship that sank near the Paradip Port in September, 2009 causing an oil spill?

- A Red Rose
- B Black Rose
- C White Rose
- D Green Rose

Answer: A

SSC CHSL Previous Question papers (download pdf)

Question 88

Who among the following has been honoured with the prestigious Dadasaheb Phalke Award for 2007?

- A Yash Chopra
- B Ustad Amjad Ali Khan
- C Manna Dey
- D A. Nageshwara Rao

Answer: C

Question 89

An Intelligent terminal

- A has a microprocessor, but cannot be programmed by the user
- B can process small data processing jobs, with the use of a large CPU

C interacts with the user in English

D cannot take data from the user

Answer: A

Question 90

Which one of the following is not a method of estimating National Income ?

A Expenditure method

B Product method

C Matrix method

D Income method

Answer: C

Free SSC Study Material (18,000 Solved Questions)

Question 91

The monetary policy in India is formulated by

A Central Government

B Industrial Financial Corporation of India

C Reserve Bank of India

D Industrial Development Bank of India

Answer: C

Question 92

A short-term government security paper is called

A Share

B Debenture

C Mutual fund

D Treasury bill

Answer: D

Question 93

WTO basically promotes

A Financial support

B Global peace

C Unilateral trade

D Multilateral trade

Answer: D

Latest Job Updates on Telegram - Join here

Question 94

Under which market condition do firms have excess capacity ?

- A Perfect competition
- B Monopolistic competition
- C Duopoly
- D Oligopoly

Answer: B

Question 95

Price theory is also known as

- A Macro Economics
- B Development Economics
- C Public Economics
- D Micro Economics

Answer: D

Question 96

At present, India is following which kind of exchange rate?

- A Fixed exchange rate
- B Floating exchange rate
- C Pegged up exchange rate
- D Pegged down exchange rate

Answer: B

Join SSC Daily Quiz Telegram Group

Question 97

Who among the following won the 'ICC Cricketer of the Year Award' for the year 2009 ?

- A M.S. Dhoni
- B Gautam Gambhir
- C Mitchell Johnson
- D Tillakaratne Dilshan

Answer: C

Question 98

The bats can fly in the dark because

- A they can see the objects in darkness
- B they have weak legs and are likely to be attacked by predators
- C they generate flashes of light
- D they generate ultrasonic sound waves

Answer: D

Question 99

What changes will happen to a bowl of ice and water kept at exactly zero degree Celsius ?

- A All ice will melt
- B All water will become ice
- C No change will happen
- D Only some ice will melt

Answer: C

SSC CGL Free Mock Test

Question 100

What is meant by National Income?

- A Net National Product at market price
- B Net National Product at factor cost
- C Net Domestic Product at market price
- D Net domestic Product at factor cost

Answer: B

125 SSC CGL Mocks for just Rs. 199

Quant

Instructions

For the following questions answer them individually

Question 101

The H.C.F. and L.C.M. of, two numbers are 8 and 48 respectively. If one of the numbers is 24, then the other number is

- A 48
- B 36
- C 24

D 16

Answer: D

Explanation:

Given:-

Numbers- First = 24

Second = x (suppose)

H.C.F. of numbers = 8

L.C.M. of numbers = 48

As we know:

H.C.F.* L.C.M. = Product of numbers

Hence

$$48*8 = 24*x$$

$$x = 16$$

SSC CGL Previous Papers (DOWNLOAD PDF)

Question 102

The greatest number, which when subtracted from 5834, gives a number exactly divisible by each of 20, 28, 32 and 35, is

A 1120

B 4714

C 5200

D 5600

Answer: B

Explanation:

Given: Numbers- First = 5834

Second = x (Suppose)

And number $(5834 - x)$ is divisible by each of 20,28,32,35

Let's say it is y

Hence $5834 - x = y$

or $x = 5834 - y$

Now for x to be greatest y should be least

hence y should be least common multiple of 20,28,32,35

$$y = 1120$$

$$\text{now } x = 5834 - 1120$$

$$x = 4714$$

Question 103

The ninth term of the sequence 0, 3, 8, 15, 24, 35, is

A 63

B 70

C 80

D 99

Answer: C

Explanation:

Given:

Sequence of numbers 0,3,8,15,24,35

To know:

9th term of the sequence

As we can see difference of sequence is in arithmetic progression of 3,5,7,9,11,13 and so on.

6th term of sequence is 35

and adding common difference for it (that is 13), hence 7th term will be 48

accordingly 9th term will be 80

Question 104

$x+y = 9$ and $\frac{x}{y} = 1.25$, then $\frac{y}{x}$ is equal to

A 0.3

B 0.5

C 0.8

D 0.9

Answer: C

Explanation:

Given: $\frac{x}{y} = 1.25$

or $x/y = 125/100$

hence $y/x = 4/5$

$= 0.8$

25 SSC CHSL Mocks for just Rs. 149

Question 105

The sum of the series $(1 + 0.6 + 0.06 + 0.006 + 0.0006 + \dots)$ is

A $1\frac{2}{3}$

B $1\frac{1}{3}$

C $2\frac{1}{3}$

D $2\frac{2}{3}$

Answer: A

Explanation:

Given:

Summation of numbers $(1 + 0.6 + 0.06\dots)$

as we can see that the sequence 0.6, 0.06, 0.006 is making infinite g.p. with common ratio of 0.1

as we know summation of an infinite g.p. is $\frac{a}{1-r}$ (where a is first term and r is common ratio)

hence summation will be $\frac{0.6}{1-0.1} = \frac{2}{3}$

Now the total sum will be $1 + \frac{2}{3} = 1\frac{2}{3}$

Question 106

$\sqrt{\frac{0.009 \times 0.36 \times 0.016 \times 0.08}{0.002 \times 0.008 \times 0.0002}}$ is equal to

A 34

- B 36
- C 38
- D 39

Answer: B

Explanation:

Given:

$$\frac{\sqrt{0.009 \times .36 \times .016 \times .08}}{\sqrt{0.002 \times .008 \times .0002}}$$

$$\frac{\sqrt{9 \times 36 \times 16 \times 8 \times 10^{-10}}}{\sqrt{2 \times 8 \times 2 \times 10^{-10}}}$$

or $\frac{\sqrt{9 \times 36 \times 16 \times 8 \times 10^{-10}}}{\sqrt{2 \times 8 \times 2 \times 10^{-10}}}$

Solving it, we will get it as 36

Question 107

A number, when divided by 114, leaves remainder 21. If the same number is divided by 19, then the remainder will be

- A 1
- B 2
- C 7
- D 17

Answer: B

Explanation:

Let the given number be x

Let a be the quotient when x is divided by 114

$$\text{So } 114 = a \cdot 114 + 21$$

$$\text{so } x = 114a + 21$$

when x is divided by 19 it can be written as

$$\frac{x}{19} = \frac{114a + 21}{19}$$

114 is divisible by 19 and 21 leaves a remainder of 2.

SSC CGL Tier-2 Previous Papers PDF

Question 108

The square root of 0.09 is

- A 0.30
- B 0.03
- C 0.81
- D 0.081

Answer: A

Explanation:

$$0.09 = \frac{9}{100}$$

$$\sqrt{\frac{9}{100}} = \frac{3}{10} = 0.3$$

Question 109

The number 0.121212.... in the P form p/q is equal to

- A 4/11
- B 2/11
- C 4/33
- D 2/33

Answer: C

Explanation:

Let

$$x = 0.121212 \text{ be equation 1}$$

$$100x = 12.121212 \text{ be equation 2}$$

Subtracting 1 from 2

$$99x = 12$$

$$x = \frac{12}{99}$$

$$= \frac{4}{33}$$

Question 110

If $\left(\frac{3}{5}\right)^3 \left(\frac{3}{5}\right)^{-6} = \left(\frac{3}{5}\right)^{2x-1}$ then x is equal to

- A -2
- B 2
- C -1
- D 1

Answer: C

Explanation:

$$\left(\frac{3}{5}\right)^3 \left(\frac{3}{5}\right)^{-6} = \left(\frac{3}{5}\right)^{2x-1}$$

we know that $a^m a^n = a^{m+n}$

$$\left(\frac{3}{5}\right)^3 \left(\frac{3}{5}\right)^{-6} = \left(\frac{3}{5}\right)^{3-6} = \left(\frac{3}{5}\right)^{-3}$$

So now

$$-3 = 2x-1$$

$$2x = -2$$

$$x = -1$$

SSC CGL Important Questions PDF

Question 111

Two numbers are in the ratio 3:4. Their L.C.M. is 84. The greater number is

- A 21
- B 24
- C 28
- D 84

Answer: C

Explanation:

Let the numbers be $3x, 4x$

LCM of $3x$ and $4x$ is $= 12x$

So the number 84 is divisible by 12

$$\frac{84}{12} = 7$$

The numbers are $7 \times 3 = 21, 7 \times 4 = 28$

The greatest number is 28

Question 112

A drum of kerosene is $\frac{3}{4}$ full. When 30 litres of kerosene is drawn from it, it remains $\frac{1}{2}$ full. The capacity of the drum is

- A 120 litres
- B 135 litres
- C 150 litres
- D 180 litres

Answer: A

Explanation:

Drum is $\frac{3}{4}$ full.

When 30 liters are drawn out of it, it becomes $\frac{1}{2}$ full.

$$\text{Therefore } \frac{3}{4} - \frac{1}{2} \text{ of drum} = 30$$

$$\frac{1}{4} \text{ of drum} = 30$$

$$\text{Total capacity of drum} = 30 \times 4 = 120 \text{ litres}$$

Question 113

By what least number should 675 be multiplied so as to obtain a perfect cube number ?

- A 3
- B 5
- C 24
- D 40

Answer: B

Explanation:

Factorising 675 we get

$$675 = 5 \times 5 \times 3 \times 3 \times 3$$

There in order to make 675 a perfect cube, it has to be multiplied by 5

1500 + Free Must Solved SSC Questions (With Solutions)

Question 114

$\frac{1}{2} + 11\frac{1}{2} + 111\frac{1}{2} + 1111\frac{1}{2}$ is equal to

- A 1236
- B 3456
- C 618

D 617

Answer: A

Explanation:

$$\frac{1}{12} + \frac{1}{112} + \frac{1}{1112} + \frac{1}{11112} = \frac{3}{2} + \frac{23}{2} + \frac{223}{2} + \frac{2223}{2} = \frac{3+23+223+2223}{2} = \frac{2472}{2} = 1236$$

Question 115

0.001 is equal to

A 1/1000

B 1/999

C 1/99

D 1/9

Answer: B

Explanation:

Let $x = 0.001$ be the first equation

$$\begin{aligned} 1000x &= 1000 \times 0.001 \\ &= 1.001 \end{aligned}$$

Let $1000x = 1.001$ be second equation

Subtracting equation 1 from 2

$$999x = 1$$

$$x = \frac{1}{999}$$

Question 116

$\frac{4.41 \times 0.16}{2.1 \times 1.6 \times 0.21}$ is equal to

A 1

B 0.1

C 0.01

D 10

Answer: A

Explanation:

$$\frac{4.41 \times 0.16}{2.1 \times 1.6 \times 0.21}$$

$$= \frac{2.1^2 \times 0.16}{2.1 \times 0.16 \times 10 \times 0.21}$$

$$= \frac{2.1^2 \times 0.16}{2.1 \times 0.16 \times 2.1}$$

$$= \frac{2.1^2 \times 0.16}{2.1^2 \times 0.16}$$

$$= 1$$

General Science Notes for SSC CGL

Question 117

If a and b are two odd positive integers, by which of the following integers is $(a^4 - b^4)$ always divisible ?

- A 3
- B 6
- C 8
- D 12

Answer: C

Explanation:

$$(a^4 - b^4) = (a^2 + b^2) \times (a^2 - b^2) \\ = (a^2 + b^2) \times (a + b) \times (a - b)$$

Let $a = 5$, $b = 3$

$$5^4 - 3^4 = (5^2 + 3^2)(5 + 3)(5 - 3) = 34 \times 8 \times 2 \text{ which is divisible by } 8$$

Let $a = 7$ and $b = 5$

$$7^4 - 5^4 = (7^2 + 5^2)(7 + 5)(7 - 5) = 74 \times 12 \times 2 \text{ which is also divisible by } 8$$

Question 118

If $a = 11$ and $b = 9$, then the value of $\frac{a^2 + b^2 + ab}{a^3 - b^3}$ is

- A $\frac{1}{2}$
- B 2
- C 20
- D 200

Answer: A

Explanation:

$$\frac{a^2 + b^2 + ab}{a^3 - b^3} = \frac{a^2 + b^2 + ab}{(a - b)(a^2 + b^2 + ab)} = \frac{1}{a - b} = \frac{1}{11 - 9} = \frac{1}{2}$$

Question 119

$\frac{256 \times 256 - 144 \times 144}{112}$ is equal to

- A 420
- B 400
- C 360
- D 320

Answer: B

Explanation:

$$\frac{256 \times 256 - 144 \times 144}{112} = \frac{256^2 - 144^2}{112} = \frac{(256 - 144)(256 + 144)}{112} = \frac{(112)(400)}{112} = 400$$

Free SSC Study Material (18,000 Solved Questions)

Question 120

If a and b be positive integers such that $a^2 - b^2 = 19$, then the value of a is

- A 19
- B 20
- C 9
- D 10

Answer: D

Explanation:

$$a^2 - b^2 = 19$$

19 is a prime number

$$(a + b)(a - b) = 19 \times 1$$

$$\text{So } a + b = 19$$

$$a - b = 1$$

Adding both the equations we get $2a = 20$

$$a = 10$$

Question 121

If the ratio of cost price and selling price of an article be as 10:11, the percentage of profit is

- A 8
- B 10
- C 11
- D 15

Answer: B

Explanation:

Let the cost price be $10x$ and selling price be $11x$

$$\text{Percentage Profit} = \frac{11x - 10x}{10x} \times 100 = 10$$

Question 122

A manufacturer marked an article at Rs. 50 and sold it allowing 20% discount. If his profit was 25%, then the cost price of the article was

- A Rs. 40
- B Rs. 35
- C Rs. 32
- D Rs. 30

Answer: C

Explanation:

Given: Marked Price = 50

$$\text{Discount} = 20\% \text{ of } 50 = 50 \times 0.2 = 10$$

Hence sold price = $50 - 10 = 40$

Let's say cost price is x

Profit = 25% of x (Always remember profit and loss applicable only on cost price) = $\frac{x}{4}$

Hence sold price will be $x + \frac{x}{4} = \frac{5x}{4}$

or $\frac{5x}{4} = 40$

$$x = 32$$

SSC Exam Free Videos (Youtube)

Question 123

A shopkeeper earns a profit of 12% on selling a book at 10% discount on the printed price. The ratio of the cost price and the printed price of the book is

A 45:56

B 45:51

C 47:56

D 47:51

Answer: A

Explanation:

Given: Profit = 12%

Discount on printed price = 10%

Let's say cost price is x and printed price is y

hence sold price will be $x + \frac{12x}{100}$ and $y - \frac{10y}{100}$

Both should be equal:

hence $x + \frac{12x}{100} = y - \frac{10y}{100}$

$$\frac{x}{45} = \frac{y}{56}$$

Question 124

By selling a bicycle for Rs. 2,850, a shopkeeper gains 14%. If the profit is reduced to 8%, then the selling price will be

A Rs. 2,600

B Rs. 2,700

C Rs. 2,800

D Rs. 3,000

Answer: B

Explanation:

Given: Initial selling price = 2,850

Profit = 14%

As we know profit and loss is applicable on cost price only

let's say it is x

hence $x + \frac{14x}{100} = 2,850$

or $\frac{114x}{100} = 2,850$

or $x = 2500$

Now new profit is 8% of 2500 i.e. 200 hence new sold price will be 2700

Question 125

By selling an article, a man makes a profit of 25% of its selling price. His profit per cent is

- A 20
- B 25
- C 30
- D 33.33

Answer: D

Explanation:

Given Profit on selling price is 25%

Suppose selling price is y

hence profit will be $\frac{y}{4}$ and cost price will be $\frac{3y}{4}$

Now profit percentage on cost price will be $\frac{\frac{y}{4}}{\frac{3y}{4}} \times 100$

i.e. $\frac{100}{3} = 33.33$

SSC Free Preparation App

Question 126

If A's income is 50% less than that of B's, then B's income is what per cent more than that of A?

- A 125
- B 100
- C 75
- D 50

Answer: B

Explanation:

Let's say B's income is 100

Hence A's income will be 50

Now B's income is 50 more than A's

Hence it is $\frac{50}{50} \times 100$ percent ($\frac{d}{A_i} \times 100$ where d is difference in income and A_i is A's income) more than A's

Question 127

1.14 expressed as a per cent of 1.9 is

- A 6%
- B 10%
- C 60%
- D 90%

Answer: C

Explanation:

Let's say 1.14 is x percent of 1.9

hence $1.14 = \frac{1.9 \times x}{100}$
 x will be 60

Question 128

Two natural numbers are in the ratio 3:5 and their product is 2160. The smaller of the numbers is

- A 36
- B 24
- C 18
- D 12

Answer: A

Explanation:

Given:

Ratio of two numbers = 3:5

Hence we can say first number is $3x$ and second number is $5x$

Product of two numbers is = 2160

or $15x^2 = 2160$

or $x = 12$

hence numbers will be 30 and 60

Daily Free SSC Practice Set

Question 129

If 60% of A = 48% of B, then A:B is

- A 9:20
- B 20:9
- C 4:5
- D 5:4

Answer: C

Explanation:

Given 60% of A = 48% of B

Hence A:B = 48 : 60

or A:B = 4 : 5

Question 130

Two successive price increase of 10% and 10% of an article are equivalent to a single price increase of

- A 19%
- B 20%
- C 21%
- D 22%

Answer: C

Explanation:

Let's say price of article is 100

After first increase its price will be $100(1 + \frac{10}{100}) = 110$

Now second increment will be applied on 110

Hence new price will be $110(1 + \frac{10}{100}) = 121$

Which is 21 more than before any increment

Hence total percentage increment = 21

Question 131

$\frac{\sqrt{3+x} + \sqrt{3-x}}{\sqrt{3+x} - \sqrt{3-x}} = 2$ then x is equal to

A 5/12

B 12/5

C 5/7

D 7/5

Answer: B

Explanation:

Let's say $\sqrt{3+x} = a$

and $\sqrt{3-x} = b$

hence $\frac{a+b}{a-b} = 2$

Now let's say $\frac{a}{b} = y$

According to ratio proportionate rule $\frac{a+b}{a-b} = \frac{y+1}{y-1}$

After putting value and solving for y, its value will be 3

hence $\frac{a}{b} = 3$

now putting $a = \sqrt{3+x}$ and $\sqrt{3-x} = b$ and solving for x

we will get $x = \frac{12}{5}$

SSC CGL Free Online Coaching

Question 132

An equilateral triangle of side 6cm has its corners cut off to form a regular hexagon. Area (in cm²) of this regular hexagon will be ?

A $3\sqrt{3}$

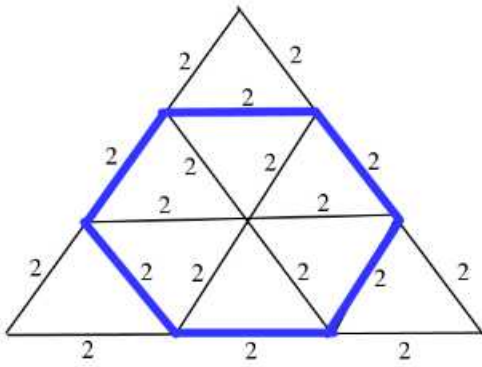
B $3\sqrt{6}$

C $6\sqrt{3}$

D $\frac{5\sqrt{3}}{2}$

Answer: C

Explanation:



The hexagon is composed of 6 equilateral triangles, each with a side of 2.

$$\text{Area of an equilateral triangle} = \frac{\sqrt{3}}{4} s^2$$

=> Area of regular hexagon = 6 × area of small equilateral triangles

$$= 6 \times \frac{\sqrt{3}}{4} \times (2)^2$$

$$= 6\sqrt{3} \text{ cm}^2$$

=> Ans - (C)

Question 133

The length (in metres) of the longest rod that can be put in a room of dimensions 10 m x 10 m x 5 m is

- A $15\sqrt{3}$
- B 15
- C $10\sqrt{2}$
- D $5\sqrt{2}$

Answer: B

Explanation:

The longest length in the room will be along to its diagonal

hence let's say diagonal of room = a

diagonal of base = b

Height = 5 (Given)

now diagonal of base will be $\sqrt{100 + 100} = 10\sqrt{2}$

so b = $10\sqrt{2}$

now as we know $a^2 = b^2 + 25$

hence a = 15

Question 134

If Rs. 1000 is divided between A and B in the ratio 3:2, then A will receive

- A Rs. 400
- B Rs. 500
- C Rs. 600
- D Rs. 800

Answer: C

Explanation:

Given: ratio of A and B is 3:2 and total money to be divided 1000

let's say A received $3x$ and B received $2x$
hence $3x + 2x = 1000$
or $x = 200$
hence A will receive 600

SSC CHSL Previous Question papers (download pdf)

Question 135

What must be added to each term of the ratio 7:11, so as to make it equal to 3:4 ?

- A 8
- B 7.5
- C 6.5
- D 5

Answer: D

Explanation:

Given: Terms are in ratio 7:11

let's say first term $7x$ and second term $11x$

adding y to each term, it will be $7x + y$ and $11x + y$
and its ratio will be 3:4

hence $7x + y : 11x + y = 3:4$

on solving above equation we get $5x = y$

hence adding number should be a multiple of 5.

answer will be (D)

Question 136

A sum of money at compound interest doubles itself in 15 years. It will become eight times of itself in?

- A 45 years
- B 48 years
- C 54 years
- D 60 years

Answer: A

Explanation:

Let's assume sum of money to be x and rate of compound interest is r

hence $x \times \left(1 + \frac{r}{100}\right)^{15} = 2x$

or $\left(1 + \frac{r}{100}\right)^{15} = 2$

$\left(1 + \frac{r}{100}\right) = 2^{\frac{1}{15}}$

now we have to find time in which it got 8 times, let's say it is n

hence $x \times \left(1 + \frac{r}{100}\right)^n = 8x$

or $\left(1 + \frac{r}{100}\right)^n = 8$

or $2^{\frac{1}{15}} = 2^{\frac{3}{15}}$

we get $n = 45$

Question 137

Buses start from a bus terminal with a speed of 20 km/hr at intervals of 10 minutes. What is the speed of a man coming from the opposite direction towards the bus terminal if he meets the buses at intervals of 8 minutes ?

- A 3 km/hr
- B 4 km/hr
- C 5 km/hr
- D 7 km/hr

Answer: C

Explanation:

Distance between buses will $20 \times \frac{10}{60} = \frac{10}{3}$ km.

Now man is travelling this distance in 8 min. with the relative speed of $(20+x)$ (let's assume speed of man is x km/hr)

hence $(20+x) = \frac{\frac{10}{3}}{\frac{8}{60}}$

$x = 5$

Free SSC Study Material (18,000 Solved Questions)

Question 138

If the circumference of a circle is decreased by 50% then the percentage of decrease in its area is:

- A 25
- B 50
- C 60
- D 75

Answer: D

Explanation:

As we know circumference of a circle will be directly proportional to its radius r_1

hence when it got half its radius will also get half

now area of a circle is directly proportional to square of its radius

hence when its radius gets half its area gets $\frac{1}{4}$ th of its value

let us say area was A

after decrement it will be $\frac{A}{4}$

Decrement is of $\frac{3A}{4}$ which is 75% of its original value.

Question 139

At what rate per cent per annum will a sum of Rs. 1,000 amount to Rs. 1,102.50 in 2 years at compound interest ?

- A 5
- B 5.5
- C 6
- D 6.5

Answer: A

Explanation:

Let's say rate is r

hence $1000 \times \left(1 + \frac{r}{100}\right)^2 = 1102.5$

now on solving the we will get $r = 5$

Question 140

What annual payment will discharge a debt of Rs. 6,450 due in 4 years at 5% per annum simple interest ?

- A Rs. 1,400
- B Rs. 1,500
- C Rs. 1,550
- D Rs. 1,600

Answer: B

Explanation:

Let's annual payment of a year is A.

So net due principal after 4 years will be $5375 - 3A$

and net interest due after 4 years will be $5\% \times (5375 \times 4 - 6A)$

So $(5375 - 3A) + (21500 - 6A) \times 5\% = A$ (as final annual payment A should clear all remaining dues)

We will get A as 1500.

Latest Job Updates on Telegram - Join here

Question 141

The average of the first 100 positive integers is

- A 100
- B 51
- C 50.5
- D 49.5

Answer: C

Explanation:

summation of first n natural numbers is $\frac{n \times (n+1)}{2}$

now putting n = 100

summation will be 5050

hence average will be 50.5

Question 142

In a family, the average age of a father and a mother is 35 years. The average age of the father, mother and their only son is 27 years. What is the age of the son?

- A 12 years
- B 11 years
- C 10.5 years
- D 10 years

Answer: B

Explanation:

Total age of father and mother will be = $35 \times 2 = 70$

Total age of father, mother and son will be = $27 \times 3 = 81$

Age of son = 11

Question 143

If 5 men or 7 women can earn Rs. 5,250 per day, how much would 7 men and 13 women earn per day ?

- A Rs. 11,600
- B Rs. 11,700
- C Rs. 16,100
- D Rs. 17,100

Answer: D

Explanation:

5 men earn 5,250

so 1 man will 1050

7 women earn 5,250

so 1 woman will earn 750

now 7 men and 13 women will earn = $7 \times 1050 + 13 \times 750$
= 17100

Join SSC Daily Quiz Telegram Group

Question 144

If A and B together can complete a piece of work in 15 days and B alone in 20 days, in how many days can A alone complete the work ?

- A 60
- B 45
- C 40
- D 30

Answer: A

Explanation:

B does complete work in 20 days

hence in unit time amount of work done will be $\frac{1}{20}$

suppose in unit time amount of work done by A will be x

hence when they are working together amount of work done in unit time will be

$$x + \frac{1}{20} = \frac{1}{15} \text{ (given)}$$

$$x = \frac{1}{60}$$

it means A does $\frac{1}{60}$ amount of work in unit time

now unit work will be done ,when A alone is working, in 60 days

Question 145

By walking at $\frac{3}{4}$ of his usual speed, a man reaches his office 20 minutes later than his usual time. The usual time taken by him to reach his office is

- A 75 minutes
- B 60 minutes
- C 40 minutes
- D 30 minutes

Answer: B

Explanation:

As distance is constant and we know $s = \frac{d}{t}$ (where s is distance and t is time)
hence $st = \text{constant}$
or $s_1 t_1 = s_2 t_2$
or $s_1 t_1 = 4 s_1 (t_1 + 20)$
hence $t_1 = 60$

Question 146

A can complete a piece of work in 18 days, B in 20 days and C in 30 days. B and C together start the work and are forced to leave after 2 days. The time taken by A alone to complete the remaining work is

- A 10 days
- B 12 days
- C 15 days
- D 16 days

Answer: C

Explanation:

Amount of work done by B and C together in unit time will be $\frac{1}{20} + \frac{1}{30} = \frac{5}{60}$

hence in two days amount of work done by B and C together = $\frac{10}{60} = \frac{1}{6}$

remaining work = $\frac{5}{6}$

A does $\frac{1}{18}$ amount of work in unit time

hence $\frac{5}{6}$ amount of work will be done in 15 days.

SSC CGL Free Mock Test

Question 147

A train, 300m long, passed a man, walking along the line in the same direction at the rate of 3 km/hr in 33 seconds. The speed of the train is

- A 30 km/h
- B 32 km/h
- C 32.8 km/h
- D 35.7 km/h

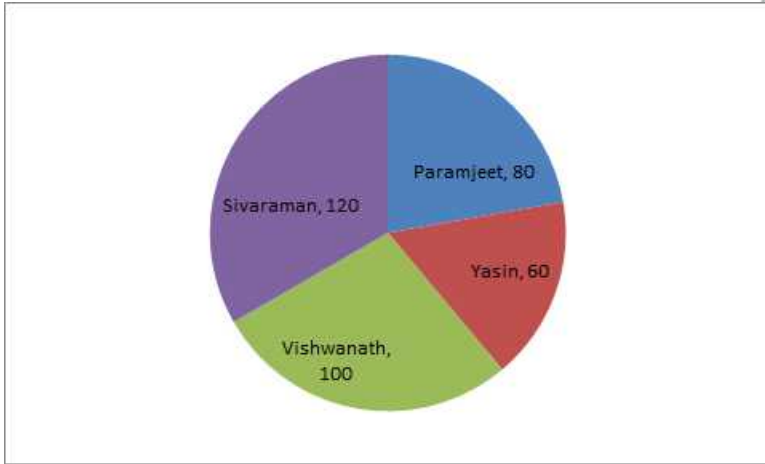
Answer: D

Explanation:

Let's say speed of train is x
and man is going along the train
hence its relative speed will be $(x-3)$, through which it is covering a distance of .3 km in 33 seconds
so $x - 3 = \frac{33}{3600}$
on solving for x we get $x = 35.7$ km.

Instructions

Directions :The pie chart, given here, represents the number of valid votes obtained by four students who contested election for school leadership. The total number of valid votes polled was 720. Observe the chart and answer the questions based on it.



Number represented in pie-chart are in degrees.

Question 148

What was the minimum number of votes obtained by any candidate ?

- A 100
- B 110
- C 120
- D 130

Answer: C

Explanation:

Numbers of votes will be proportional to degree of angles in pie chart hence minimum angle is representing the minimum distribution

so yasin will be having minimum number of votes which will be $\frac{60}{360} \times 720 = 120$

Question 149

What was the winner ?

- A Sivaraman
- B Paramjeet
- C Yasin
- D Vishwanath

Answer: A

Explanation:

Person having maximum no. of distribution will have max. no. of votes

125 SSC CGL Mocks for just Rs. 199

Question 150

By how many votes did the winner defeat his nearest rival ?

- A 40
- B 45
- C 48
- D 50

Answer: A

Explanation:

As we know the number of votes will be directly proportional to the distribution
Shivaraman has the maximum no. of votes which will be $\frac{120}{360} \times 720 = 240$
and secondly viswanath has number of votes $\frac{100}{360} \times 720 = 200$
Hence difference will be 40

SSC CGL Previous Papers (DOWNLOAD PDF)

English

Instructions

Directions: In the following questions, some of the sentences have errors and some have none. Find out which part of a sentence has an error. The number of that part is your answer. Your answer is 'd' i.e., No error.

Question 151

He is a university professor/but of his three sons/neither has any merit./No error.

- A He is a university professor
- B but of his three sons
- C neither has any merit.
- D No error

Answer: C

Explanation:

Neither is used to describe the absence of two things and is usually followed by the use of nor. 'None' is used to describe the quality of each object/person in the buch/group of objects/persons.
So 'neither has any merit' should be replaced by 'none of them has any merit'.

25 SSC CHSL Mocks for just Rs. 149

Question 152

After knowing truth,/they took the right decision/in the matter./No error.

- A After knowing truth,
- B they took the right decision
- C in the matter.
- D No error

Answer: A

Explanation:

There should be 'the' in between knowing and truth, because truth is a common noun.

Question 153

It is time you/decide on your next/course of action./No error.

- A It is time you
- B decide on your next
- C course of action.
- D No error

Answer: B

Explanation:

The word 'on' can be omitted from the phrase 'decide on your next course of action'.

Question 154

He who has suffered most/for the cause,/let him speak/No error.

- A He who has suffered most
- B for the cause,
- C let him speak
- D No error

Answer: C

Explanation:

The phrase 'let him speak' is incomplete and has to be replaced by 'should be let to speak'.

SSC CGL Tier-2 Previous Papers PDF

Question 155

A cup of coffee/is an excellent complement/to smoked salmon./No error.

- A A cup of coffee
- B is an excellent complement
- C to smoked salmon.
- D No error

Answer: D

Explanation:

There is no grammatical and vocabulary related error in the sentence.

Instructions

Directions :Sentences are given with blanks to be filled in with an appropriate word(s). Four alternatives are suggested for each question. Choose the correct alternative out of the four.

Question 156

The hotel was not too expensive

A was it ?

B wasn't it?

C is it ?

D isn't it ?

Answer: A

Explanation:

The correct answer is option A.

Question tag -It is used when one wants to reconfirm ones statement.It is a statement followed by a question.

If the statement is positive, question tag will be negative and vice versa.

For ex- *Shyam is* working in a bank, **isn't he?**

Question tags are formed with the auxiliary or modal verb from the statement and the appropriate subject.

A subject pronoun comes after an auxiliary or after `to be' form of the verb & is used to replace the noun.

Here in the given question-

Hotel was not too expensive, wasn't it?

Since the statement /main part of the sentence is in positive form, question tag will be negative.

Here `was' is used in main part of the sentence,so in question tag we use `wasn't'.

(Same verb/(auxiliary,modal,main)as that of the sentence)

To indicate `Hotel',here we used pronoun `it'.

..

Question 157

Like humans, zoo animals must have a dentist to __ their teeth

A fill

B filled

C filling

D to be filled

Answer: A

Explanation:

The correct answer is option number 1st.

To +V1 is called as the infinitive form if the verb.

After `to' we use first form if the verb.

Infinitive form if the verb is used when we want to express the purpose,to answer why.

Ex-He studied hard **to make** his parents proud.

Why he do study -to make his parents proud.

Infinitive form is used as a subject of verb,as a object of verb,as the complement of the verb,as a object of preposition,to qualify noun,to qualify a sentence.

Here it is used as a `Adverb'.It qualifies verb `Studied'.

In the given example, options -`to be filled,filling,filled'are wrong.Because after `to' we can't use 3rd form of the verb,rest options are grammatically incorrect.

SSC CGL Important Questions PDF

Question 158

It was very kind of you to do the washing-up, but you _ it.

- A didn't have to do
- B hadn't to do
- C mightn't have done
- D mustn't have done

Answer: D

Explanation:

The correct answer is option number -D

Mustn't have done is the correct answer.

Mustn't have -Must is a modal verb, it adds meaning to another verb.

Mustn't we use to show possibility or necessity.

Must not -We use to talk about things we need to avoid doing or while telling someone to not do it.

Rest options are grammatically & contextual incorrect.

Hadn't to do -Had we use to indicate past things. Also hadn't to do is grammatically incorrect.

Might -We use might to show prediction, possibility, probability.

Ex- the Prime Minister **might** visit the town.

Here indicating possibility.

Might & hadn't is inappropriate because sentence is in the present tense.

Usage of didn't is not contextually correct.

Didn't have to do -We say didn't have to represent specific point of time that has already passed.

Only option 'Mustn't have do' is grammatically & contextually correct.

Question 159

He went __ sea alone.

- A in
- B to
- C into
- D on

Answer: B

Explanation:

The correct answer is option B.

Here it's prepositional error.

Preposition '**TO**' is used to show destination.

Also 'go to sea' is an idiom which means to become a seller, to embark on a voyage.

We see uses of other preposition

Into- we use this to show moment, any action which show moment.

Ex- He jumped into the well.

In -It is use to show place,time.

Ex- There is a pen in the cupboard.

On -it is use to indicate time,place.(When things are in direct contact,at surface area,in rest position)

Ex- there is a book on the table.

Question 160

The __ of our civilization from an agricultural society to today's complex industrial world was accompanied by war.

A adjustment

B migration

C route

D metamorphosis

Answer: D

Explanation:

The correct answer is option number D.

The sentence implies here the transformation /changes in civilization (human society) from agriculture to today's industrial world was accompanied by war.

Meaning of remaining options.

Adjustment (noun)-

a small change, corrections, modification.

Ex -The stock market exchange made an **adjustment** in their policy to get more investors.

Route (Noun)

A way ,road,path, approach,method.

Ex- The **route** to Theni from Madurai is 70kms.

Migration (Noun)

An instance of moving to live in another place for a while.Movement, journey.

Ex- **Migration** of outsiders to Delhi make the city over- populated.

1500 + Free Must Solved SSC Questions (With Solutions)

Instructions

Directions :In the following questions choose the word opposite in meaning to the given word.

Question 161

FLORID

A Weak

B Pale

C Monotonous

D Ugly

Answer: B

Explanation:

Flord means having a red or flushed complexion.

In the given options A and C can be eliminated because they aren't relevant. Option D doesn't mean that somebody is not red. So the remaining option B is the right choice as "Pale" means light faded colour(red).

Question 162

VERITY

- A Sanctity
- B Reverence
- C Falsehood
- D Rarity

Answer: C

Explanation:

Verity means something that is regarded true.

So option C, Falsehood is the only word in the options which gives the opposite meaning of the given word.

Question 163

PERSPICUITY

- A Vagueness
- B Dullness
- C Unfairness
- D Unwillingness

Answer: A

Explanation:

Perspicuity means to see through, and vagueness means to have a rough imagery or not clear a image.

General Science Notes for SSC CGL

Question 164

FERVENT

- A Inexcitable
- B Enduring
- C Dispassionate
- D Subdued

Answer: C

Explanation:

Fevent means showing a passionate intensity.

So option C, "Dispassionate", is clearly the antonym for fervent.

Question 165

MEANDERING

- A Sliding
- B Sloping
- C Strained
- D Straight

Answer: D

Explanation:

Meandering means "being a curvy path" and the word straight is the perfect antonym.

Instructions

Directions :In the following questions out of the four alternatives, choose the one which best expresses the meaning of the given word.

Question 166

LUXURIANT

- A Luxury-loving
- B Lovely
- C Rich
- D Abundant

Answer: D

Free SSC Study Material (18,000 Solved Questions)

Question 167

CANTANKEROUS

- A Cancerous
- B Ferocious
- C Quarrelsome
- D Fissiparous

Answer: C

Question 168

ONUS

- A Sadness
- B Happiness
- C Responsibility
- D Criticism

Answer: C

Question 169

DERISION

- A Humiliation
- B Embarrassment
- C Ridicule
- D Condemnation

Answer: C

SSC Exam Free Videos (Youtube)

Question 170

TRITE

- A Commonplace
- B Clever
- C Brief
- D Impudent

Answer: A

Instructions

Directions :In the following questions a part of the sentence is bold. Below are given alternatives to the bold part at a, b and c which may improve the sentence. Choose the correct alternative. In case no improvement is needed, your answer is d.

Question 171

Obviously he isn't cut up to be a good teacher.

- A cut out
- B cut in
- C cut for
- D No improvement

Answer: A

Explanation:

Cut out for doing something means possessing the qualities required for doing that job

Question 172

Power got with money is the most craved for today.

- A sought after
- B wished for
- C welcomed for
- D No improvement

Answer: D

Explanation:

Craved for= correct use of phrasal verb

SSC Free Preparation App

Question 173

The brown shirt wants washing.

- A has to wash
- B is in need of a wash
- C requires a wash
- D No improvement

Answer: C

Explanation:

Structural and correct usage = requires a wash

Question 174

You are asked to copy this letter word by word.

- A word for word
- B word with word
- C word to word
- D No improvement

Answer: A

Explanation:

Word for word - in exactly the same or, when translated, exactly equivalent words.

Question 175

The weak man is a slave to his sensuous pleasures.

- A sensory
- B sensual
- C secondary
- D No improvement

Answer: B

Explanation:

Sensual -of or arousing gratification of the senses and physical, especially sexual, pleasure.

Daily Free SSC Practice Set

Instructions

Directions :In the following questions, out of the four alternatives, choose the one which can be substituted for the given

words/sentence.

Question 176

An underhand device resorted to in order to justify misconduct

- A Subterfuge
- B Manoeuvre
- C Stratagem
- D Complicity

Answer: B

Question 177

Impossible to describe

- A Miraculous
- B Ineffable
- C Stupendous
- D Appalling

Answer: B

Question 178

One who criticises popular beliefs which he thinks is mistaken or unwise

- A Philistine
- B Iconoclast
- C Imposter
- D Cannibal

Answer: B

SSC CGL Free Online Coaching

Question 179

Detaining and confining someone

- A Interruption
- B Interrogation
- C Interment
- D Internment

Answer: D

Question 180

Science of the races of mankind

- A Genealogy
- B Epistemology
- C Ethnology
- D Sociology

Answer: C

Instructions

Directions :In the following questions, groups of four words are given. In each group, one word is correctly spelt. Find the correctly spelt word.

Question 181

- A collaborate
- B comemorate
- C colate
- D chocalate

Answer: A

SSC CHSL Previous Question papers (download pdf)

Question 182

- A circuiteous
- B clairvoyant
- C chivelery
- D cavalcade

Answer: B

Question 183

- A severity
- B sovereignty
- C superiorty
- D serenity

Answer: D

Question 184

- A cummulative
- B comemmorative
- C accumulative
- D accommodative

Answer: D

Free SSC Study Material (18,000 Solved Questions)

Question 185

- A benidiction
- B besmerch
- C beneficent
- D benevolence

Answer: D

Instructions

Directions :In the following questions, the 1 stand the last sentences of the passage are numbered 1 and 6. The rest of the passage is split into four parts and named P, Q, R and S. These four parts are not given in their proper order. Read the sentence and find out which of the four combinations is correct. Then find the correct answer.

Question 186

1. Education in India had a glorious beginning.
- P. But after the British rule, it faced many changes.
- Q. It went on for centuries with the same glory.
- R. English as the medium of instruction had a very great response.
- S. One of the changes was the introduction of English as the medium of instruction.
6. As the Britishers left we had a complexity of opinions regarding English

- A PQRS
- B QPSR
- C PQSR
- D SRPQ

Answer: B

Explanation:

The correct answer is option number -B

The 1st sentence-Education in India had a **glorious beginning.**

Connectors-**It went on** for centuries with the **same glory.**

Connectors-But **after the British rule, it** faced many changes.

Here,1st sentence says about **glory of India in education** so 2nd sentence **must** tells about the same.**Only option `Q' talks about the glory.**

now 3rd sentence,tells how it faced changes because of British rule.Pronoun 'It' is used here for glory of Indian education.

Now

Connectors-

One of the changes was the introduction of English as the medium of instruction.

sentence `P' says about the changes in education.

Only sentence `S' says more about changes.

English as the medium of instruction had a very great response.

sentence `S' tells about one of the change as the introduction of English as medium of instruction.

And sentence `R' tells more about the English medium.

Question 187

1. It is easy to criticize the people at the helm, for the slow progress in every field.
- P. We are well aware that the intellectuals are leaving our country for better employment opportunities.
- Q. Then question remains unanswered because our country cannot show opportunities to the intellectuals.
- R. Then, what about their obligation to the Motherland ?
- S. First, we should ask ourselves as to what is happening to the young intellectuals in India.
6. This situation of 'Brain-Drain' leads to a variety of problems.

- A PSQR
- B RPSQ
- C PSRQ
- D SPRQ

Answer: D

Explanation:

The correct answer is option number -D.

1st sentence-It is **easy to criticize** the people at the helm, for the slow progress in every field.

Connectors- **First, we should ask ourselves** as to what is happening to the young intellectuals in India.

The introductory part of the sentence talks about general statement of criticising people for the slow progress.

Next part should tells more about that -sentence `S' is telling about that -it says instead of criticising people we should ask ourselves what is happening to the young intellectuals.

Connectors-**We are well aware that the intellectuals are leaving our country for better employment opportunities** .

What is happening to the young intellectuals of the country?

This question is answered in sentence `P'.

Connectors- **Then**, what about their obligation to the Motherland ?

sentence `P' answered about the young intellectuals,only sentence `R' seems to be most logical to follow after P.

Connectors-**Then question remains unanswered** because our country cannot show opportunities to the intellectuals.

Sentence `R' questions about the obligation of young intellectuals towards Motherland.

Sentence `Q' inform about that.Key is `Then question remains unanswered'

So correct sequence is- SPRQ.

Latest Job Updates on Telegram - Join here

Question 188

1. It is the responsibility of parents to teach the young moral values in life. P
- P Many children take advantage of their parents' busy schedule.
- Q. This results in children's ignorance of social values.
- R. The reason behind it is that parents are quite busy nowadays.
- S. Nowadays parents spend very meagre time with children.
6. As such, the society is going away from the value system.

- A SRPQ
- B PQRS

C SQRP

D SPQR

Answer: A

Explanation:

The correct answer is option number -A.

The 1st sentence-It is **the responsibility of parents to teach the young moral values in life**

Connectors-**Nowadays parents spend** very meagre time with children.

Only option `S' will follow after 1st sentence.

Connectors-**The reason behind it** is that parents are quite busy nowadays

Option `R' explains why parents are unable to spend less time with children.

Connectors-**Many children take advantage** of their parents' busy schedule.

Connectors-**This results in** children's ignorance of social values.

The correct sequence therefore is -SRPQ.

Question 189

1. **The man who does his duty without any selfish desire for fruit may be called a sanyasi as well as yogi.**

P. **The man who has achieved much evenness of temper will be serene, because his mere thoughts are changed with the strength of action.**

Q. **He would practise yoga, i.e., evenness of temper, and cannot but perform action.**

R. **The root of the matter is that one should not allow his mind to flit from object of desire to another and from that to a third.**

S. **But he who abstains from action altogether is only an idler.**

6. **A yogi is one who is not attached to his objects of sense or to action and whose mind has ceased to roam restlessly.**

A SRQP

B RQPS

C QRSP

D PRSQ

Answer: A

Explanation:

1sentence - The man **who does his duty without any selfish desire for fruit may be called a sanyasi as well as yogi.**

Connectors-**But he who abstains from action** altogether is only an idler.

Connectors-The root of the matter is that one should not allow his mind to flit from object of desire to another and from that to a third

1st sentence, define what is yogi/Sanyasi.

Option-S-tells about idle-the one who didn't do anything.

Connectors-**The root of the matter is that one should not allow his mind to flit from object of desire to another** and from that to a third.

Connectors-**He would practise yoga, i.e., evenness of temper**, and cannot but perform action

Last part is

The man who has achieved much evenness of **temper** will be serene, because his mere thoughts are changed with the strength of action.

The correct sequence is SRQP.

Question 190

1. This was an important day for Alan.
- P. It was a cold day, but Alan would be warm.
- Q. For the first time he was going to hunt seals alone.
- R. First he put on his fur-lined jacket.
- S. Then he put on mittens and boots of deerskin to protect his hands and feet from the cold.
6. Finally he picked up the gun he had cleaned so carefully the day before.

- A PQRS
B QPRS
C PRSQ
D QRPS

Answer: B

Explanation:

The correct answer is option number -B

1st sentence-This was an **important day for Alan.**

Connectors from Part Q to Part P-

Connectors-**For the first time he was going to hunt seals alone.**

Sentence Q connects sentence P

Sentence Q-tells that for Alan it was an important day. Since pronoun 'He' is used in other sentences, first sentence should mention the name. Option, Q is hence the correct choice.

The next sentence should explain why it is an important day for Alan

Only sentence 'P' explains that

For the 1st time he was going for hunting alone.

Connectors from Part P to Part R

Connectors-It was a cold day, but **Alan would be warm**

Connectors-**First he put on his fur-lined jacket.**

Now, only one option is remaining-

Then he put on mittens and boots of deerskin to protect his hands and feet from the cold

Last sentence will be -

Finally he picked up the gun he had cleaned so carefully the day before.

The correct sequence is therefore-QPRS.

Join SSC Daily Quiz Telegram Group

Instructions

Directions :In the following questions, a sentence has been given in Active Voice/Passive Voice, Out of the four alternatives suggested, select the one which best expresses the same sentence in Passive/ Active Voice.

Question 191

They have made a film based on this novel.

- A A film was based on this novel and made.
B A film have been made based on, this novel.
C A film, based on this novel, has been made

D A film has been based and made on this novel.

Answer: C

Explanation:

The correct answer is option number -C

The given sentence is in the active voice.

We need to change it into passive voice.

It is in

S +H.V+(V2)+ O. (Active Voice)

In passive voice it will be,

O+H.V+been+V2+by+Subject

Active Voice-They have made a film based on this novel.

Passive Voice- A film, based on this novel, **has been made.**

The given sentence is in the present perfect form.

While changing it into passive voice,we need to use `been' after helping verb.

The correct choice is C.

Option A -is in past form.(was is used)

Option B & D are grammatically incorrect.

Question 192

The people couldn't move me to the hospital and the doctor operated on me at home.

A I couldn't be moved to the hospital and was operated on at home by the doctor.

B I couldn't be moved to the hospital and I had to be operated on at home.

C I couldn't be moved to the hospital and I was operated at home by the doctor.

D I couldn't be moved to the hospital by the people and operated on at home.

Answer: A

Explanation:

Given sentence is in active voice(compounded using 'and') and change it into passive voice.

Since there are two simple sentence and we should change the voices of both the sentences

It is in the form of ' sub1 + modal auxiliary +not+ V1+ obj' and ' sub2 + V2 + obj'

It is to be converted into the from of ' obj+ modal auxiliary +not+be+ V3+ sub1 and obj + was/were+ v3 + by+ sub2'.

In this case we can eliminate the group of people. Simply I couldn't be moved conveys the actual meaning. Then the word ' I ' don't need to place again. since it's connected using 'and'.

So the correct answer is A.

Question 193

Why did he deprive you of the membership ?

A Why you were deprived of the membership?

B Why were you deprived of his membership by him ?

C Why was he deprived of his membership

D Why were you deprived of your membership by him ?

Answer: D

Explanation:

Given sentence is active voice and change it into passive voice.

It's in the form of 'Wh question + auxiliary verb + subject +V1+obj'

So we need to convert in the form of "Wh question + auxiliary verb + obj + V2 + by + subject'

By considering option B & D, since the subject is you it should be our membership, the correct Answer is D.

SSC CGL Free Mock Test

Question 194

The news has been brought to us by him.

- A He brought us the news.
- B He has brought us the news.
- C He was brought the news to us.
- D We brought the news to him.

Answer: B

Explanation:

Given sentence is in passive voice. According to the given instruction change it into active voice.

It's given in the form of 'Obj+have/has been+V3+ by+ subject'.

The active form of the above sentence is 'subject +have /has +V3 + object'.

So the option B is correct answer

Question 195

Not a word was spoken by the criminal in self defence.

- A The criminal spoke not a word in self defence.
- B The criminal in self defence spoke no word.
- C The criminal did not speak a word in self defence.
- D The criminal spoke in self defence not a word.

Answer: C

Explanation:

Given sentence is passive voice. According to the given instruction change it into active voice .

The given sentence is in past tense in the form of 'was not + V3 + by'.

To convert it into active voice Change it in the form of 'did not + V1'.

So option C suits the best of all other options.

Instructions

Directions :In the following passage, you have one brief passage with 5 questions following the passage. Read the passage carefully and choose the best answer to each question out of the four alternatives.

PASSAGE : Every profession or, trade, every art and every science has its technical vocabulary, the function of which is partly to designate things or processes which have no names in ordinary English and partly to secure greater exactness in nomenclature. Such special dialects or jargons are necessary in technical discussion of any kind. Being universally understood by the devotees of the particular science or art, they have the precision of a mathematical formula. Besides, they save time, for it is much more economical to name a process than to describe it. Thousands of these technical terms are very properly included in every large dictionary, yet, as a

whole, they are rather on the outskirts of the English language than actually within its borders. Different occupations, however, differ widely in the character of their special vocabularies. In trades and handicrafts and other vocations like farming and fishing that have occupied great numbers of men from remote times, the technical vocabulary is very old. An average man now uses these in his own vocabulary. The special dialects of law, medicine, divinity and philosophy have become familiar to cultivated persons.

Question 196

Special words used in technical discussion

- A may become part of common speech
- B never last long
- C should resemble mathematical formula
- D should be confined to scientific fields

Answer: C

125 SSC CGL Mocks for just Rs. 199

Question 197

The writer of this article is

- A a scientist
- B a politician
- C a linguist
- D a businessman

Answer: C

Question 198

This passage is primarily concerned with

- A various occupations and professions
- B technical terminology
- C scientific undertakings
- D a new language

Answer: B

Question 199

It is true that

- A various professions and occupations often interchange words
- B there is always a non-technical word that may be substituted for the technical word
- C the average man often uses in his own vocabulary what was once technical language not meant for him
- D everyone is interested in scientific findings

Answer: C

SSC CGL Previous Papers (DOWNLOAD PDF)

Question 200

In recent years, there has been a marked increase in the number of technical terms in the nomenclature of

- A Farming
- B Fishing
- C Sports
- D Government

Answer: D

25 SSC CHSL Mocks for just Rs. 149

SSC CGL Free Mock Test

125 SSC CGL Mocks for just Rs. 199

SSC CGL Previous Papers (DOWNLOAD PDF)

25 SSC CHSL Mocks for just Rs. 149

SSC CGL Tier-2 Previous Papers PDF

SSC CGL Important Questions PDF

1500 + Free Must Solved SSC Questions (With Solutions)

General Science Notes for SSC CGL

Free SSC Study Material (18,000 Solved Questions)

SSC Exam Free Videos (Youtube)

SSC Free Preparation App

Daily Free SSC Practice Set

SSC CGL Free Online Coaching

SSC CHSL Previous Question papers (download pdf)

Free SSC Study Material (18,000 Solved Questions)

Latest Job Updates on Telegram - Join here

Join SSC Daily Quiz Telegram Group