



SSC CHSL 30 Jan 2017 Afternoon Shift

All rights reserved. No part of this publication may be reproduced, distributed, or transmitted in any form or by any means, electronic, mechanical, photocopying, recording or otherwise, or stored in any retrieval system of any nature without the permission of cracku.in, application for which shall be made to support@cracku.in

Reasoning

Instructions

For the following questions answer them individually

Question 1

Select the related word/letters/number from the given alternatives.

Entomology : Insects:: Seismology: ?

- A Man
- B Fossils
- C Earthquakes
- D Diseases

Answer: C

Explanation:

Entomology is the branch of zoology concerned with the study of insects, similarly Seismology is the branch of science concerned with *earthquakes*.

=> Ans - (C)

SSC CHSL Free Mock Test

Question 2

Select the related word/letters/number from the given alternatives.

ZWU : TQO:: LIG : ?

- A EFG
- B FCA
- C DEF
- D EFC

Answer: B

Explanation:

Expression = ZWU : TQO:: LIG : ?

The pattern followed is :

Z	W	U
(-6)	(-6)	(-6)
T	Q	O

Similarly, LIG : FCA

L	I	G
(-6)	(-6)	(-6)
F	C	A

=> Ans - (B)

Question 3

Select the related word/letters/number from the given alternatives.

EV : LO :: JQ : ?

A JQ

B FU

C QJ

D HS

Answer: C

Explanation:

Expression = EV : LO :: JQ : ?

The pattern followed is :

E	V
(+7)	(-7)
L	O

Similarly, JQ : QJ

J	Q
(+7)	(-7)
Q	J

=> Ans - (C)

Question 4

Select the related word/letters/number from the given alternatives.

12 : 132 :: 14 : ?

A 172

B 182

C 176

D 180

Answer: B

Explanation:

Expression = $12 : 132 :: 14 : ?$

The pattern followed is = $x : x(x - 1)$

Eg :- $12 : 12(12 - 1) = 12 : 132$

Similarly, $14 \times (14 - 1) = 14 \times 13 = 182$

=> Ans - (B)

SSC CHSL Previous Papers (DOWNLOAD PDF)

Question 5

Select the odd word/letters/number/number pair from the given alternatives.

A Hyderabad

B Kerala

C Tamil Nadu

D Karnataka

Answer: A

Explanation:

Apart from Hyderabad, all other are states of the country, while Hyderabad is the capital of Telangana, hence it is the odd one out.

=> Ans - (A)

Question 6

Select the odd word/letters/number/number pair from the given alternatives.

A BCD

B GHW

C EOA

D GTS

Answer: C

Explanation:

Except EOA, none of the options contain any vowel, hence EOA is the odd one out.

=> Ans - (C)

Question 7

Select the odd word/letters/number/number pair from the given alternatives.

A 51

B 66

C 83

D 93

Answer: C

Explanation:

Apart from 83, all are composite numbers divisible by 3, hence 83 is the odd one out.

=> Ans - (C)

SSC CGL MTS Previous Papers (DOWNLOAD PDF)

Question 8

Select the odd word/letters/number/number pair from the given alternatives.

A 153

B 177

C 187

D 221

Answer: B

Explanation:

153, 187 and 221 are multiples of 17, hence 177 is the odd one out.

=> Ans - (B)

Question 9

A series is given with one term missing. Select the correct alternative from the given ones that will complete the series. Mercury, Venus, Earth, ?

- A Jupiter
- B Saturn
- C Mars
- D Pluto

Answer: C

Explanation:

The position of planets is given.

= Mercury -> Venus -> Earth -> Mars

=> Ans - (C)

Question 10

A series is given with one term missing. Select the correct alternative from the given ones that will complete the series.

AB, BC, CD, DE, EF ?

- A GH
- B FE
- C FG
- D IJ

Answer: C

Explanation:

Expression : AB, BC, CD, DE, EF ?

The pattern followed is that two consecutive English alphabets are written, and the next pair starts from the last letter of previous pair.

Eg :- AB, then B is followed by C, thus next term = BC

Similarly, last term is EF, and F is followed by G, thus missing term : **FG**

=> Ans - (C)

SSC CGL GD Constable Previous Papers (DOWNLOAD PDF)

Question 11

A series is given with one term missing. Select the correct alternative from the given ones that will complete the series.

BDG, KMP, TVY, ?

- A CDH
- B CEH
- C HEC
- D CEI

Answer: B

Explanation:

Expression : BDG, KMP, TVY, ?

The pattern followed in each letter of the terms is :

1st letter : B (+6 letters) = K (+6 letters) = T (+6 letters) = C

2nd letter : D (+6 letters) = M (+6 letters) = V (+6 letters) = E

3rd letter : G (+6 letters) = P (+6 letters) = Y (+6 letters) = H

Thus, missing term = **CEH**

=> Ans - (B)

Question 12

A series is given with one term missing. Select the correct alternative from the given ones that will complete the series.

11, 13, 17, 19, ?

- A 22
- B 23
- C 29
- D 31

Answer: B

Explanation:

2 and 4 are alternatively added in the given numbers.

$$11 + 2 = 13$$

$$13 + 4 = 17$$

$$17 + 2 = 19$$

$$19 + 4 = \mathbf{23}$$

=> Ans - (B)

Question 13

In the following question, two statements are given each followed by two conclusions I and II. You have to consider the statements to be true even if they seem to be at variance from commonly known facts. You have to decide which of the given conclusions, if any, follows from the given statements.

Statement:

(I) Glaciers are receding and the temperature rise of the world is more than last year this time. (II) Pollution level of the Earth is rising a lot resulting in avalanches.

Conclusions:

(I) Pollution is resulting into hike in temperature of the world. (II) Pollution is the only reason for depletion of the nature.

- A Only conclusion II follows
- B Conclusion I and II both follow
- C Neither I nor II follow
- D Only conclusion I follows

Answer: C

SSC Stenographer Previous Papers (DOWNLOAD PDF)

Question 14

A is taller than B but smaller than E. C is the smallest of all. D is taller than A but smaller than E. Who is the tallest of the five?

- A B
- B C
- C D
- D E

Answer: D

Explanation:

A is taller than B but smaller than E, $\Rightarrow E > A > B$

Also, C is the smallest of all.

D is taller than A but smaller than E, $\Rightarrow E > D > A$

Combining above statements, we get : $E > D > A > B > C$

\therefore E is the tallest of the five.

=> Ans - (D)

Question 15

Arrange the given words in the sequence in which they occur in the dictionary.

- i. Terrace
- ii. Tenant
- iii. Tea
- iv. Tomorrow

A iii, ii, i, iv

B i, ii, iii, iv

C iv, i, ii, iii

D i, iii, ii, iv

Answer: A

Explanation:

As per the order of dictionary :

= Tea -> Tenant -> Terrace -> Tomorrow

≡ iii, ii, i, iv

=> Ans - (A)

Question 16

In a certain code language, "NATURE" is written as "TANURE". How is "LISTEN" written in that code language?

A NETSIL

B TENSIL

C SILTEN

D LITSEN

Answer: C

Explanation:

"NATURE" is written as "TANURE"

The pattern followed is that the word is divided into two parts : (NAT) (URE), then the first part is written in reverse order and the second as it is to find the desired code, i.e. = (TAN) (URE)

Similarly, code for LISTEN : **SILTEN**

=> Ans - (C)

SSC CGL Previous Papers (DOWNLOAD PDF)

Question 17

If "+" means "minus", "x" means "divided by", "÷" means "plus" and "" means "multiplied by", then $96 \times 12 - 4 + 13 \div 21 = ?$

- A 42
- B 40
- C 37
- D 333

Answer: B

Explanation:

Expression : $96 \times 12 - 4 + 13 \div 21 = ?$

$$\equiv 96 \div 12 \times 4 - 13 + 21$$

$$= (8 \times 4) + 8$$

$$= 32 + 8 = 40$$

=> Ans - (B)

Question 18

If "S" denotes "multiplied by", "V" denotes "subtracted from", "M" denotes "added to" and "L" denotes "divided by", then

$$44 \text{ L } 11 \text{ S } 7 \text{ V } 7 \text{ M } 9 = ?$$

- A 32
- B 25
- C 37
- D 30

Answer: D

Explanation:

Expression : $44 \text{ L } 11 \text{ S } 7 \text{ V } 7 \text{ M } 9 = ?$

$$\equiv 44 \div 11 \times 7 - 7 + 9$$

$$= (4 \times 7) + 2$$

$$= 28 + 2 = 30$$

=> Ans - (D)

Question 19

In the following question, which one set of letters when sequentially placed at the gaps in the given letter series shall complete it?

_d_be_c_ed_b

A edbcb

B cdebc

C edcbc

D eedcb

Answer: C

Explanation:

The pattern followed is that in groups of 4, the term 'edcb' is repeated.

= edcb edcb edcb

=> Ans - (C)

SSC CGL Free Mock Test (Latest Pattern)

Question 20

Ramesh moves toward the east and covers 30 m and then takes a right and covers 40 m. Find the direction and the distance from the initial point to the final point.

A 50 m north

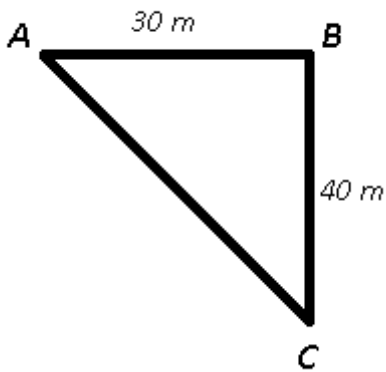
B 50 m northeast

C 40 m southeast

D 50 m southeast

Answer: D

Explanation:



Let Ramesh starts from point A and moved towards east for 30 m to reach point B, then turned right for 40 m and stopped at point C.

Thus, in $\triangle ABC$,

$$\Rightarrow (AC)^2 = (AB)^2 + (BC)^2$$

$$\Rightarrow (AC)^2 = (30)^2 + (40)^2$$

$$\Rightarrow (AC)^2 = 900 + 1600 = 2500$$

$$\Rightarrow AC = \sqrt{2500} = 50 \text{ m}$$

Thus, Ramesh is 50 m south-east of his original position.

=> Ans - (D)

Question 21

A word is represented by only one set of numbers as given in any one of the alternatives. The sets of numbers given in the alternatives are represented by two classes of alphabets as in two matrices given below. The columns and rows of Matrix-I are numbered from 0 to 4 and that of Matrix-II are numbered from 5 to 9. A letter from these matrices can be represented first by its row and next by its column, e.g., '8' can be represented by 21, 32 etc. and 'W' can be represented by 97, 89 etc. Similarly, you have to identify the set for the word 'SAINT'.

Matrix-I

	0	1	2	3	4
0	S	L	K	J	J
1	B	S	F	F	G
2	I	B	S	H	H
3	D	I	B	S	H
4	E	E	I	B	C

Matrix-II

	5	6	7	8	9
5	O	A	N	Q	Q
6	T	O	A	N	R
7	U	T	O	A	N
8	V	P	T	O	W
9	P	V	W	T	O

A 00, 56, 20, 68, 76

B 11, 67, 31, 57, 12

C 22, 78, 20, 02, 44

D 33, 67, 42, 00, 99

Answer: A

Explanation:

(A) : 00, 56, 20, 68, 76 = **SAINT**

(B) : 11, 67, 31, 57, 12 = SAINF

(C) : 22, 78, 20, 02, 44 = SAIKC

(D) : 33, 67, 42, 00, 99 = SAISO

=> Ans - (A)

Question 22

Sumit's grandfather's brother is the father of Hemant's father. How is Sumit related to Hemant?

A Brother

B Cousin

C Father

D Uncle

Answer: B

Explanation:

Father of Hemant's father is = Hemant's grandfather

Now, Hemant's grandfather is brother of Sumit's grandfather.

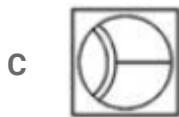
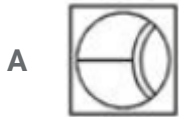
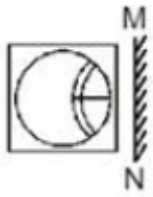
=> Sumit and Hemant are cousins.

=> Ans - (B)

SSC Stenographer Previous Papers (Latest Pattern)

Question 23

If a mirror is placed on the line MN, then which of the answer figures is the right image of the given figure?



Answer: D

Explanation:

A vertical mirror is placed, so the object on the left will appear right in reverse position and vice-versa.

So the horizontal line at the right will be reversed, thus the middle two options will be eliminated.

Also, in the question figure, the position of the two small arcs will change and will appear at left side, hence last option is the right image.

=> Ans - (D)

Question 24

Identify the diagram that best represents the relationship among the given classes. Engine, Car, Battery





Answer: C

Explanation:

Engine and Battery are both parts of a car but they are both different (hence do not intersect).

Thus, the venn diagram that best describes above relationship is :



=> Ans - (C)

Question 25

A piece of paper is folded and punched as shown below in the question figures. From the given answer figures, indicate how it will appear when opened?



D Figure 4

Answer: A

SSC GD Constable Free Mock Test (Latest Pattern)

General Awareness

Instructions

For the following questions answer them individually

Question 26

Rock Shelters of Bhimbetka is located in the foothills of?

- A Western Ghats
- B Aravalli Range
- C Vindhya Range
- D Eastern Ghats

Answer: C

SSC MTS Free Mock Test (Latest Pattern)

Question 27

Highest Civilian Honour received by Udit Narayan is

- A Padma Shri
- B Padma Bhushan
- C Padma Vibhushan
- D Bharat Ratna

Answer: B

Question 28

Which drug is used to cure Migraine?

- A Fexofenadine
- B Tramadol
- C Sumatriptan
- D Levothyroxine

Answer: C

Question 29

In which of the following the dominant phase is Gametophyte?

- A Bryophyta
- B Pteridophyta
- C Gymnosperms
- D Angiosperms

Answer: A

SSC CPO Free Mock Test (Latest Pattern)

Question 30

Anaerobic respiration refers to which of the following?

- A Respiration without Oxygen
- B Respiration with Oxygen
- C Respiration without CO₂
- D Respiration with CO₂

Answer: A

Question 31

Which bond holds the atoms together within a water molecule?

- A Nonpolar covalent
- B Polar covalent
- C Ionic
- D Coordinate

Answer: B

Question 32

Atomic number of which of the following elements is greater than that of Neon?

- A Oxygen
- B Magnesium
- C Nitrogen
- D Boron

Answer: B

25 SSC CHSL MOCKS 149

Question 33

.....defines data types and the relationships among them.

- A Data definition language
- B Data manipulation language
- C Query language
- D OQL

Answer: A

Question 34

What is a depiction of the Hindu God Shiva as the cosmic dancer who performs his divine dance called Tandavam.

- A Murugan
- B Nataraja
- C Vishnu
- D Venkateshwar

Answer: B

Question 35

If demand curve for renting a car is $D = 90000 - 23P$ and supply curve is $S = 9000 + 7P$, find the equilibrium Price?

- A Rs 1800

- B Rs 900
- C Rs 3600
- D Rs 2700

Answer: D

SSC CHSL Important Questions and Answers (Download PDF)

Question 36

The demand curve

- A shows that as the price of a good increases, demand for the good will increase
- B shows that as the price of a good increases, demand for the good will decrease
- C has a positive gradient
- D indicates that there is a direct relationship between quantity demanded and price

Answer: B

Question 37

Which type of pathogen causes the waterborne disease Cholera?

- A Algal
- B Bacterial
- C Protozoan
- D Viral

Answer: B

Question 38

Which of the following is a greenhouse gas or a gas, which can deplete the ozone layer?

- A As
- B Kr
- C C₄H₈

D CH4

Answer: D

SSC CHSL Free Videos (Youtube)

Question 39

Which of the following is not a National Park?

- A Corbett National Park
- B Kaziranga National Park
- C Satara National Park
- D Bandipur National Park

Answer: C

Question 40

Who was the first Indian astronomer to calculate the time taken by earth to orbit the sun?

- A Aryabhata
- B Ved Bhatnagara
- C Bhaskaracharya
- D Bishu devtamapi

Answer: C

Question 41

What is the capital of New Zealand?

- A Brussels
- B Canberra
- C Wellington
- D Ankara

Answer: C

SSC CHSL Syllabus

Question 42

Which among the following games was very popular in ancient India?

- A Chess
- B Cricket
- C Hockey
- D Football

Answer: A

Question 43

Ashoka The Great (273-232 B.C.) was the ruler of which dynasty?

- A Mewar
- B Mughal
- C Maurya
- D Peshwas

Answer: C

Question 44

Who Invented LED?

- A Nick Holonyak
- B Elias Howe
- C Chuck Hull
- D Christiaan Huygens

Answer: A

SSC CHSL Expected Cutt off

Question 45

Who first determined the value of G (gravitational constant)?

- A Lord Cavendish
- B R.R Heyl
- C Boyle
- D Poynting

Answer: A

Question 46

The work done by centripetal force is

- A positive
- B zero
- C negative
- D unity

Answer: B

Question 47

Indian Constitution has how many Parts?

- A 25
- B 32
- C 42
- D 52

Answer: A

SSC CHSL Study Material

Question 48

Article 31B of the Indian Constitution "Validation of certain Acts and Regulations" deals with the

- A State Government
- B Union Government
- C Directive principles of state policy
- D Fundamental rights of the Indian Citizen

Answer: D

Question 49

Who among the following has not scored even a single triple hundred in test matches?

- A Brian Lara
- B Virender Sehwag
- C Sachin Tendulkar
- D Chris Gayle

Answer: C

Question 50

Who is the author of "The Twentieth Wife"?

- A Aparna Sinha
- B Bapsi Sidhwa
- C R. K. Narayan
- D Indu Sundaresan

Answer: D

SSC CHSL Free App

English

Instructions

For the following questions answer them individually

Question 51

In the following question, the sentence given with blank to be filled in with an appropriate word. Select the correct alternative out of the four and indicate it by selecting the appropriate option.

The corrupt officer was ato the department.

- A disgrace
- B disinterred
- C discontent
- D despair

Answer: A

SSC CHSL Free Mock Test

Question 52

Select the antonym of to condemn

- A to decry
- B to laud
- C to reprobate
- D to proscribe

Answer: B

Question 53

Rearrange the parts of the sentence in correct order.

It is a pity that

Psuch violence hardly

Qcomes within the

Rpurview of the law

- A QRP
- B RPQ
- C PRQ
- D PQR

Answer: D

Question 54

In the following question, some part of the sentence may have errors. Find out which part of the sentence has an error and select the appropriate option. If a sentence is free from error, select 'No Error'.

For kindergarten children, / (A) drawing by crayons is always (B) / even more preferable than sketch pens. (C) / No error (D)

A A

B B

C C

D D

Answer: C

SSC CHSL Previous Papers (DOWNLOAD PDF)

Question 55

In the following question, a sentence has been given in Active/Passive voice. Out of four alternatives suggested, select the one, which best expresses the same sentence in Passive/Active voice.

Jay posted the video on YouTube.

A The video has been posted on YouTube by Jay.

B The video was posted on YouTube by Jay.

C The video had been posted on YouTube by Jay.

D The video is posted on YouTube by Jay.

Answer: B

Question 56

Rearrange the parts of the sentence in correct order.

The more technologically

advanced and wired a

country, the more vulnerable it is to a cyber attack

is, the more

A RPQ

B QRP

C PRQ

D QPR

Answer: C

Question 57

Select the word with the correct spelling.

A antequas

B carotane

C scewl

D apoplexy

Answer: D

SSC CGL MTS Previous Papers (DOWNLOAD PDF)

Question 58

In the following question, a sentence has been given in Direct/Indirect speech. Out of the four alternatives suggested, select the one, which best express the same sentence in Indirect/Direct speech.

'What do you want?' Sheila asked Rohan.

A Sheila asked Rohan what do you want.

B Sheila asked Rohan what he wanted.

C Sheila asked Rohan what does he want.

D Sheila asked Rohan what he wants.

Answer: B

Question 59

In the following question, out of the four alternatives, select the alternative which best expresses the meaning of the idiom/phrase. to cry over spilt milk

A to dwell pointlessly on past misfortunes

B to feel sorry for others' misfortunes

C to immediately start crying after making a mistake to avoid punishment

D to acknowledge one's mistake and move ahead

Answer: A

Question 60

Improve the bracketed part of the sentence. The pilgrim (lain) in the shade of the tree.

A lied

B laid

C lay

D no improvement

Answer: C

SSC CGL GD Constable Previous Papers (DOWNLOAD PDF)

Question 61

Improve the bracketed part of the sentence. The department granted him permission (to stay) in Dubai.

A of stay

B of staying

C for stay

D no improvement

Answer: D

Question 62

Select the synonym of perusal

A inspection

B delinquency

C inconsideration

D laxity

Answer: A

Question 63

In the following question, some part of the sentence may have errors. Find out which part of the sentence has an error and select the appropriate option. If a sentence is free from error, select 'No Error'.

The salesman tried to(A)/sell me a solar water heater(B)/but I already have one.(C)/No error(D)

A A

B B

C C

D D

Answer: D

SSC Stenographer Previous Papers (DOWNLOAD PDF)

Question 64

Select the antonym of assiduous

A lethargic

B scrupulous

C diligent

D exacting

Answer: A

Question 65

Select the word with the correct spelling.

A scrimped

B avering

C duodenum

D evidance

Answer: C

Question 66

In the following question, the sentence given with blank to be filled in with an appropriate word. Select the correct alternative out of the four and indicate it by selecting the appropriate option.

The union allows the employees to bargainfor higher wages.

- A wholly
- B collectively
- C fully
- D completely

Answer: B

SSC CGL Previous Papers (DOWNLOAD PDF)

Question 67

In the following question, out of the four alternatives, select the alternative which is the best substitute of the phrase.

To be full of or covered with a mass of small bubbles.

- A scintillating
- B brew
- C frothy
- D aerated

Answer: C

Question 68

In the following question, out of the four alternatives, select the alternative which is the best substitute of the phrase.

Comment added to a text or diagram.

- A lexicon
- B thesaurus
- C terminology
- D annotation

Answer: D

Question 69

Select the synonym of consensus

- A cacophony
- B harmony
- C tumult
- D clamour

Answer: B

SSC CGL Free Mock Test (Latest Pattern)

Question 70

In the following question, out of the four alternatives, select the alternative which best expresses the meaning of the idiom/phrase to cry wolf

- A to keep complaining over small issues
- B to raise a false alarm
- C to act as if one feels sorry for the other person
- D to report to a higher authority the mistakes committed by others

Answer: B

Explanation:

Start Group:

Instructions

In the following passage, some of the words have been left out. Read the passage carefully and select the correct answer for the given blank out of the four alternatives.

Cyber security has(1) interesting parallel to terrorism.(2) are asymmetric. Ensuring security of data, information, and communication is considerably harder than hacking into a system. The attacker has an inherent(3) in both conventional terrorism and cyber attacks. In the case(4) statesponsored attacks, the challenges are of a much(5) magnitude.

Question 71

Cyber security hasinteresting parallel to terrorism.

- A a
- B an
- C the
- D two

Answer: B

Question 72

.....are asymmetric.

- A Both
- B Two
- C Twice
- D Together

Answer: A

SSC Stenographer Previous Papers (Latest Pattern)

Question 73

The attacker has an inherentin both conventional terrorism and cyber attacks.

- A advantage
- B resource
- C comfort
- D sanction

Answer: A

Question 74

In the casestatesponsored attacks

- A for
- B of

- C with
- D about

Answer: B

Question 75

the challenges are of a muchmagnitude.

- A heightened
- B heighted
- C high
- D higher

Answer: D

Explanation:
End Group:

SSC GD Constable Free Mock Test (Latest Pattern)

Mathematics

Instructions

For the following questions answer them individually

Question 76

Mansukh can do a piece of work in 10 hours. If he is joined by Jayanti who is 50% more efficient, in what time will they together finish the work?

- A 2 hours
- B 6 hours
- C 4 hours
- D 3 hours

Answer: C

Explanation:

Let total work to be done = 20 units

Mansukh's efficiency = $\frac{20}{10} = 2$ units/hr

Jayanti is 50% more efficient than Mansukh, \Rightarrow Jayanti's efficiency = $\frac{150}{100} \times 2 = 3$ units/hr

\Rightarrow Mansukh and Jayanti 1 day's work = $2 + 3 = 5$ units/hr

\therefore Time taken by them to finish the work together = $\frac{20}{5} = 4$ hours

\Rightarrow Ans - (C)

SSC MTS Free Mock Test (Latest Pattern)

Question 77

If the amount received at the end of 2nd and 3rd year at Compound Interest on a certain Principal is Rs 25088, and Rs 28098.56 respectively, what is the rate of interest?

- A 6 percent
- B 24 percent
- C 12 percent
- D 19 percent

Answer: C

Explanation:

Compound interest at the end of 2nd year = Rs. 25,088

Compound interest at the end of 3rd year = Rs. 28,098.56

\Rightarrow Difference = $28098.56 - 25088 =$ Rs. 3010.56

This is the interest obtained on the amount of 2nd year.

\therefore Rate of interest, $r = \frac{3010.56}{25088} \times 100 = 12\%$

\Rightarrow Ans - (C)

Question 78

The value of x for which the expressions $19 - 5x$ and $19x + 5$ become equal is

- A 7/12
- B -7/12
- C -12/7
- D 12/7

Answer: A

Explanation:

Expressions : $19 - 5x$ and $19x + 5$

$$\Rightarrow 19 - 5x = 19x + 5$$

$$\Rightarrow 19x + 5x = 19 - 5$$

$$\Rightarrow 24x = 14$$

$$\Rightarrow x = \frac{14}{24} = \frac{7}{12}$$

\Rightarrow Ans - (A)

Question 79

The mean of marks secured by 45 students in division A of class X is 69, 65 students of division B is 65 and that of 50 students of division C is 63. Find the mean of marks of the students of three divisions of Class X.

A 65.5

B 64.8

C 64.1

D 66.9

Answer: A

Explanation:

Total marks secured by 45 students in division A = $45 \times 69 = 3105$

Total marks secured by 65 students in division B = $65 \times 65 = 4225$

Total marks secured by 50 students in division C = $50 \times 63 = 3150$

\Rightarrow Mean of marks of the students of three divisions of Class X = $\frac{(3105+4225+3150)}{(45+65+50)}$

$$= \frac{10480}{160} = 65.5$$

\Rightarrow Ans - (A)

SSC CPO Free Mock Test (Latest Pattern)

Question 80

If $a:b = 5:8$, find the value of $(6a - 5b)/(a + 2b)$.

A 10/21

B 21/10

C -21/10

D -10/21

Answer: D

Explanation:

It is given that $a : b = 5 : 8$

Let $a = 5$ and $b = 8$

To find : $\frac{6a-5b}{a+2b}$

$$= \frac{(6 \times 5) - (5 \times 8)}{(5) + (2 \times 8)}$$

$$= \frac{30 - 40}{5 + 16} = \frac{-10}{21}$$

=> Ans - (D)

Question 81

If $\frac{9}{4}$ th of $\frac{7}{2}$ of a number is 126, then $\frac{7}{2}$ th of that number is

A 56

B 284

C 72

D 26

Answer: A

Explanation:

Let the number be x

According to ques,

$$\Rightarrow \frac{9}{4} \times \frac{7}{2} \times x = 126$$

$$\Rightarrow \frac{63}{8}x = 126$$

$$\Rightarrow x = \frac{126}{63} \times 8$$

$$\Rightarrow x = 2 \times 8 = 16$$

$$\therefore \left(\frac{7}{2}\right)^{th} \text{ of the number} = \frac{7}{2} \times 16$$

$$= 7 \times 8 = 56$$

=> Ans - (A)

Question 82

The ratio of present ages of Ratna and Shantanu is 5:4. After 19 years the ratio of their ages will be 10:9. What is Ratna's present age?

A 19

B 15

C 9

D 72

Answer: A

Explanation:

Let Ratna's present age = $5x$ years and Shantanu's present age = $4x$ years

According to ques, $\Rightarrow \frac{5x+19}{4x+19} = \frac{10}{9}$

$\Rightarrow 45x + 171 = 40x + 190$

$\Rightarrow 45x - 40x = 190 - 171$

$\Rightarrow 5x = 19$

$\Rightarrow x = \frac{19}{5}$

\therefore Ratna's age = $5 \times \frac{19}{5} = 19$ years

\Rightarrow Ans - (A)

25 SSC CHSL MOCKS 149

Question 83

If $5 - 5x < 4 - x$ and $2 - x < 6 - 4x$, then x can take which of the following values?

A 1

B 2

C -1

D -2

Answer: A

Explanation:

Expression 1 : $5 - 5x < 4 - x$

$\Rightarrow 5x - x > 5 - 4$

$\Rightarrow 4x > 1$

$\Rightarrow x > \frac{1}{4}$ -----(i)

Expression 2 : $2 - x < 6 - 4x$

$\Rightarrow 4x - x < 6 - 2$

$\Rightarrow 3x < 4$

$$\Rightarrow x < \frac{4}{3} \text{-----(ii)}$$

Combining inequalities (i) and (ii), we get : $\frac{1}{4} < x < \frac{4}{3}$

The only value that x can take among the given options = 1

\Rightarrow Ans - (A)

Question 84

The ten's digit of a 2digit number is greater than the units digit by 4. If we subtract 36 from the number, the new number obtained is a number formed by interchange of the digits. Find the number.

A 95

B 84

C 73

D Cannot be determined

Answer: D

Explanation:

Let the unit's digit of the number be y and ten's digit be x

$$\Rightarrow \text{Number} = 10x + y$$

$$\text{According to ques, } \Rightarrow x - y = 4 \text{-----(i)}$$

$$\text{According to question, } \Rightarrow 10x + y - 36 = 10y + x$$

$$\Rightarrow 9x - 9y = 36$$

$$\Rightarrow x - y = \frac{36}{9} = 4 \text{-----(ii)}$$

Equations (i) and (ii) are same and thus we have two variables and one equation

Number can be = 95 , 84 , 73 , 62 , 51 , 40 and thus the solution cannot be determined.

\Rightarrow Ans - (D)

Question 85

A thief is stopped by a policeman from a distance of 450 metres. When the policeman starts the chase, the thief also starts running. Assuming the speed of the thief as 7 km/h and that of policeman as 12 km/h, how far the thief would have run, before he is overtaken?

A 504 metres

B 756 metres

C 378 metres

D 630 metres

Answer: D

Explanation:

Since the thief is escaping from the police man, thus they both are running in same direction.

Speed of thief = 7 km/hr and speed of policeman = 12 km/hr

=> Relative speed = 12 - 7 = 5 km/hr

Distance between them = 450 metres = 0.45 km

=> Time taken = $\frac{\text{distance}}{\text{speed}}$

$$= \frac{0.45}{5} = \frac{9}{100} \text{ hr}$$

∴ Distance covered by thief before he was caught = $7 \times \frac{9}{100}$

= 0.63 km = 630 metres

=> Ans - (D)

SSC CHSL Important Questions and Answers (Download PDF)

Question 86

Marked price of an item is Rs 900. On purchase of 2 items discount is 6%, on purchase of 3 items discount is 12%. Rajani buys 5 items, what is the effective discount?

- A 17.5 percent
- B 9.6 percent
- C 35 percent
- D 37 percent

Answer: B

Explanation:

Marked price of item = Rs. 900

=> Marked price of 2 items = $2 \times 900 = \text{Rs. } 1800$

Amount saved on buying 2 items = $\frac{6}{100} \times 1800 = \text{Rs. } 108$

Marked price of 3 items = $3 \times 900 = \text{Rs. } 2700$

Amount saved on buying 3 items = $\frac{12}{100} \times 2700 = \text{Rs. } 324$

Thus, on buying 5 items, total amount saved = $108 + 324 = \text{Rs. } 432$

Total marked price of 5 items = $5 \times 900 = \text{Rs. } 4500$

∴ Effective discount = $\frac{432}{4500} \times 100$

$$= \frac{432}{45} = 9.6\%$$

=> Ans - (B)

Question 87

ΔABC is similar to ΔPQR . Length of AB is 36 cm and length of the corresponding side PQ is 16 cm. If area of ΔABC is 1296 sq cm, what is the area of ΔPQR ?

- A 128 sq cm
- B 512 sq cm
- C 64 sq cm
- D 256 sq cm

Answer: D

Explanation:

It is given that $\Delta ABC \sim \Delta PQR$

Also, length of AB = 36 cm and length of the corresponding side PQ = 16 cm

Let area of $\Delta PQR = x$ sq cm

=> Ratio of Area of ΔABC : Area of ΔPQR = Ratio of square of corresponding sides = $(AB)^2 : (PQ)^2$

$$\Rightarrow \frac{1296}{x} = \frac{(36)^2}{(16)^2}$$

$$\Rightarrow x = (16)^2 = 256 \text{ sq cm}$$

=> Ans - (D)

Question 88

What is the slope of the line parallel to the line passing through the points (6,3) and (2,1)?

- A 1/2
- B 1
- C 2
- D 1

Answer: A

Explanation:

Slope of line passing through points (2,1) and (6,3)

$$= \frac{3-1}{6-2} = \frac{2}{4} = \frac{1}{2}$$

Slope of two parallel lines is always equal.

=> Slope of the line parallel to the line having slope $1/2 = \frac{1}{2}$

=> Ans - (A)

SSC CHSL Free Videos (Youtube)

Question 89

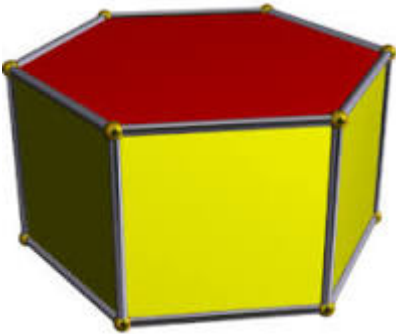
A hexagonal prism has 18 edges. How many vertices does it have?

- A 8
- B 12
- C 20
- D 22

Answer: B

Explanation:

Hexagonal prism :



Euler's formula : $V + F - E = 2$ where V is number of vertices , F is number of faces and E is number of edges.

Hexagonal Prism has 18 edges and 8 faces.

$$\Rightarrow V = 2 + E - F = 2 + 18 - 8$$

$$\Rightarrow V = 20 - 8 = 12$$

=> Ans - (B)

Question 90

When a number is increased by 21, it becomes 114% of itself. What is the number?

- A 150
- B 252
- C 315
- D 189

Answer: A

Explanation:

Let the number be $100x$

According to ques, $\Rightarrow 100x + 21 = \frac{114}{100} \times 100x$

$\Rightarrow 100x + 21 = 114x$

$\Rightarrow 114x - 100x = 21$

$\Rightarrow x = \frac{21}{14} = 1.5$

\therefore Number = $100 \times 1.5 = 150$

\Rightarrow Ans - (A)

Question 91

The total cost of a microwave oven with mixer was Rs 36750. The mixer was sold at a profit of 32% and the microwave oven at a loss of 22%. If the sale price was the same in both the items, then the cost price of the cheaper item was

A Rs 13100

B Rs 18375

C Rs 13650

D Rs 16850

Answer: C

Explanation:

Let cost price of microwave oven = $Rs.100x$

\Rightarrow Cost price of mixer = $Rs.(36,750 - 100x)$

Selling price of mixer (32% profit) = Selling price of microwave oven (22% loss)

$\Rightarrow \frac{132}{100} \times (36,750 - 100x) = \frac{78}{100} \times 100x$

$\Rightarrow 48510 - 132x = 78x$

$\Rightarrow x = \frac{48510}{210} = 231$

\Rightarrow Cost price of microwave oven = $100 \times 231 = Rs.23,100$

\Rightarrow Cost price of mixer = $36,750 - 23,100 = Rs.13,650$

\therefore Mixer is cheaper with cost price = Rs. 13,650

SSC CHSL Syllabus

Question 92

The diameter of a circle is equal to the side of the square. What is the area of the square if the area of the circle is 64π sq cm?

- A 128 sq cm
- B 196 sq cm
- C 108 sq cm
- D 256 sq cm

Answer: D

Explanation:

Let radius of circle = r cm

$$\text{Area of circle} = \pi r^2 = 64\pi$$

$$\Rightarrow r^2 = 64$$

$$\Rightarrow r = \sqrt{64} = 8 \text{ cm}$$

Thus, diameter of circle = Side of square = $2 \times 8 = 16$ cm

$$\therefore \text{Area of square} = (16)^2 = 256 \text{ cm}^2$$

\Rightarrow Ans - (D)

Question 93

The radius of a hemisphere is 14 cm, find its volume?

- A 11498.66 cubic cm
- B 1916.44 cubic cm
- C 2874.67 cubic cm
- D 5749.33 cubic cm

Answer: D

Explanation:

Radius of hemisphere = 14 cm

$$\text{Volume of hemisphere} = \frac{2}{3}\pi r^3$$

$$= \frac{2}{3} \times \frac{22}{7} \times (14)^3$$

$$= \frac{2}{3} \times 44 \times 196 = \frac{17248}{3}$$

$$= 5749.33 \text{ cm}^3$$

=> Ans - (D)

Question 94

If $\cos 11\pi/6 = x$, then the value of x is

A $-\sqrt{3}/2$

B $1/2$

C 2

D $\sqrt{3}/2$

Answer: D

Explanation:

Expression : $\cos 11\pi/6 = x$

$$= \cos\left(2\pi - \frac{\pi}{6}\right)$$

$$= \cos\left(\frac{\pi}{6}\right) = \frac{\sqrt{3}}{2}$$

=> Ans - (D)

SSC CHSL Expected Cutt off

Question 95

If $(\tan A - \tan B)/(1 + \tan A \tan B) = x$, then the value of x is

A $\tan(A - B)$

B $\tan(A + B)$

C $\cot(A - B)$

D $\cot(A + B)$

Answer: A

Explanation:

Expression : $(\tan A - \tan B)/(1 + \tan A \tan B) = x$

$$= \left(\frac{\sin A}{\cos A} - \frac{\sin B}{\cos B} \right) \div \left(1 + \frac{\sin A \sin B}{\cos A \cos B} \right)$$

$$= \left(\frac{\sin A \cos B - \cos A \sin B}{\cos A \cos B} \right) \div \left(\frac{\cos A \cos B + \sin A \sin B}{\cos A \cos B} \right)$$

$$= \left[\frac{\sin(A - B)}{\cos A \cos B} \right] \div \left[\frac{\cos(A - B)}{\cos A \cos B} \right]$$

$$= \left[\frac{\sin(A - B)}{\cos A \cos B} \right] \times \left[\frac{\cos A \cos B}{\cos(A - B)} \right]$$

$$= \frac{\sin(A-B)}{\cos(A-B)} = \tan(A - B)$$

=> Ans - (A)

Question 96

If $\tan^2 A + \cot^2 A + 2 = x$, then the value of x is

A $\tan^2 A \operatorname{cosec} 2A$

B $\sec A \operatorname{cosec} A$

C $\sec^2 A \operatorname{cosec}^2 A$

D $\tan A \operatorname{cosec} A$

Answer: C

Explanation:

Expression : $\tan^2 A + \cot^2 A + 2 = x$

Using, $(\sec^2 A - \tan^2 A = 1)$ and $(\operatorname{cosec}^2 A - \cot^2 A = 1)$

$$= (\sec^2 A - 1) + (\operatorname{cosec}^2 A - 1) + 2$$

$$= \sec^2 A + \operatorname{cosec}^2 A = \frac{1}{\cos^2 A} + \frac{1}{\sin^2 A}$$

$$= \frac{\sin^2 A + \cos^2 A}{\cos^2 A \sin^2 A}$$

$$= \frac{1}{\cos^2 A \sin^2 A} = \sec^2 A \operatorname{cosec}^2 A$$

=> Ans - (C)

Question 97

Refer the below data table and answer the following question.

	Boys	Girls
Medical	20	55
Engineering	60	30

What percent students who Engineering are girls ?

A 18.18

B 33.33

C 35.29

D 50

Answer: B

Explanation:

Number of girls who chose engineering = 30

Total number of engineers = 60 + 30 = 90

=> Percent of the girls who choose engineering = $\frac{30}{90} \times 100$

= $\frac{100}{3} = 33.33\%$

=> Ans - (B)

SSC CHSL Study Material

Question 98

Refer the below data table and answer the following question.

	Cumulative production
January	580
February	1070
March	1720
April	2340
May	2860
June	3210

How many car were manufactured in the form of months April and May ?

A 1140

B 870

C 1270

D 5200

Answer: A

Explanation:

Number of cars produced in :

January = 580

February = 1070 - 580 = 490

March = 1720 - 1070 = 650

April = 2340 - 1720 = 620

May = 2860 - 2340 = 520

June = 3210 - 2860 = 350

=> Number of cars that were manufactured in the month of the April and may = 620 + 520 = 1140

=> Ans - (A)

Question 99

Refer the below data table and answer the following question.

Day of the week	Distance jogged (in km)
Monday	4
Tuesday	2.5
Wednesday	3.5
Thursday	2
Friday	4.5
Saturday	2
Sunday	4

If 400 calories are burned by jogging 5 km, How many calories were burnt in the given week

- A 1750 calories
- B 1850 calories
- C 1800 calories
- D 1700 calories

Answer: C

Explanation:

Total distance jogged in entire week

$$= 4 + 2.5 + 3.5 + 2 + 4.5 + 2 + 4 = 22.5 \text{ km}$$

Calories burned after jogging 5 km = 400 calories

$$\Rightarrow \text{Calories burned after jogging 22.5 km} = \frac{400}{5} \times 22.5$$

$$= 80 \times 22.5 = 1800 \text{ calories}$$

\Rightarrow Ans - (C)

Question 100

Refer the below data table and answer the following question.

Items	Yearly expence in lakhs
Raw Materilas	5
Labour	5
Rent	2
Interest	5
Taxes	4

Labour and Interest are what percent total expenses ?

- A 47.62 percent

B 40.37 percent

C 33.12 percent

D 54.87 percent

Answer: A

Explanation:

Yearly expense in labour and interest (in lakhs) = 5 + 5 = 10

Total expenses (in lakhs) = 5 + 5 + 2 + 5 + 4 = 21

=> Required % = $\frac{10}{21} \times 100$

= $\frac{1000}{21} \approx 47.62\%$

=> Ans - (A)

SSC CHSL Free App

SSC CHSL Free Mock Test

SSC CHSL Previous Papers (DOWNLOAD PDF)

SSC CGL MTS Previous Papers (DOWNLOAD PDF)

SSC CGL GD Constable Previous Papers (DOWNLOAD PDF)

SSC Stenographer Previous Papers (DOWNLOAD PDF)

SSC CGL Previous Papers (DOWNLOAD PDF)

SSC CGL Free Mock Test (Latest Pattern)

SSC Stenographer Previous Papers (Latest Pattern)

SSC GD Constable Free Mock Test (Latest Pattern)

SSC MTS Free Mock Test (Latest Pattern)

SSC CPO Free Mock Test (Latest Pattern)

25 SSC CHSL MOCKS 149

SSC CHSL Important Questions and Answers (Download PDF)

SSC CHSL Free Videos (Youtube)

SSC CHSL Syllabus

SSC CHSL Expected Cutt off

SSC CHSL Study Material

SSC CHSL Free App