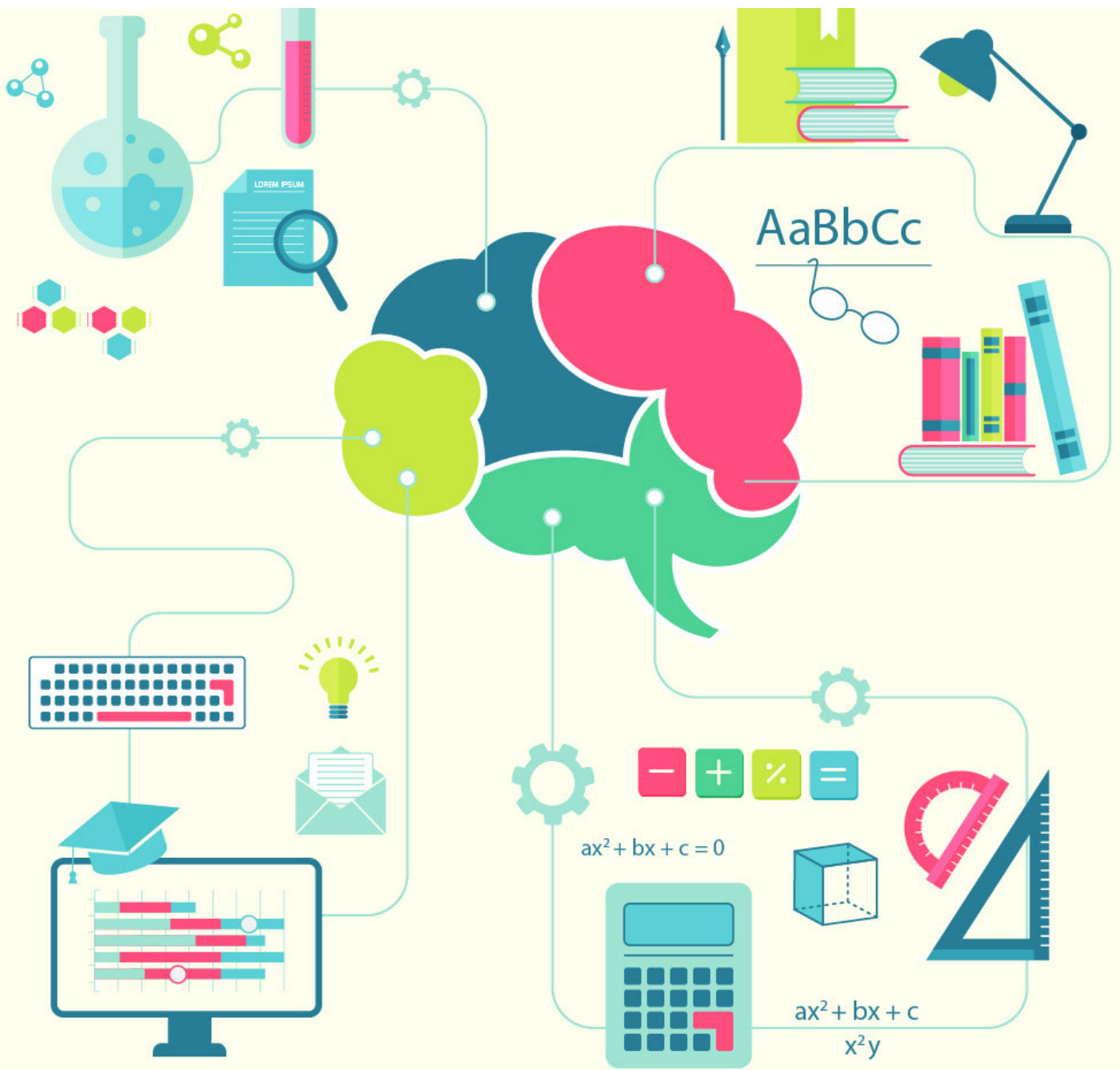


cracku 

RRB ALP Question Paper PDF

20 Feb 2018





TAKE CRACKU'S FREE RRB ALP MOCK

Question 1:

Identify the wrong number in the following series--

216, 163, 120, 72, 24

- a) 216
- b) 163
- c) 72
- d) 214

Answer: b

Solution:

The series from the right is 24×1 , 24×3 , 24×5 , 24×7 and 24×9 .

For example,

$$24 \times 1 = 24$$

$$24 \times 3 = 72$$

$$24 \times 5 = 120$$

$$24 \times 7 = 168$$

$$24 \times 9 = 216$$

So, the wrong number is 163. The correct number is $24 \times 7 = 168$

Question 2:

What should come in place of '?'

$$6 \times 4 \times 3 = 436$$

$$8 \times 4 \times ? = 468$$

$$6 \times 9 \times 8 = 986$$

- a) 3
- b) 4
- c) 5
- d) 6

Answer: d

Solution:

The equation uses the middle number in the hundred's place, the rightmost number in the tenth's place and the left most letter in the unit's place. So, the number to be used in the place of the question mark is 6.

**RRB ALP recruitment notification 2018 -
Apply online - Loco pilot & Technician
Vacancies**



SOLVE PAST RRB ALP PAPERS

Question 3:

Choose the group of mathematical signs from the given options that may replace the sign ‘*’ in the following equation--

$$7 * 7 * 2 * 1 = 12$$

- a) X - +
- b) + - X
- c) X + -
- d) + X -

Answer: b

Solution:

12 can be written as $7 + 7 - 2 \times 1$.

So, the answer is + - x which is option (b).

In all other options, the equation doesn't match.

Question 4:

In a code language, ‘KINDLE’ is written as ‘ELDNIK’. How can EXOTIC be written in the same language ?

- a) EXIOTC
- b) COXITE
- c) CXOTIE
- d) CITOXE

Answer: d

Solution:

The code uses the same letters as the original word but in an inverted fashion. So, EXOTIC is coded as CITOXE.

Latest Railway Recruitment 2018 Jobs Vacancy

HIGHLY RATED RAILWAYS APP





TAKE CRACKU'S FREE RRB ALP MOCK

Question 5:

CEGI: RTVX: IKMO: ?

- a) JKNP
- b) MNQP
- c) LNPR
- d) DFHI

Answer: c

Solution:

The code uses the letters in the alphabetical series in an inverted fashion. For example: A is used in the place of Z, B in the place of Y, etc. Also they are inverted. So, The last letter comes first in the code. So, I is replaced with R, K with P, M with N and O with L. The code is LNPR.

Question 6:

A sequence is given in which one term (or more terms) is missing. From the given options, choose the correct one that can complete the sequence--

AEI, BFJ, CGK, ?

- a) DHL
- b) DLH
- c) EIM
- d) LPT

Answer: a

Solution:

The letters strictly follow the alphabetical series. So, next set of letters will be DHL

Question 7:

Choose that odd one which is different from the rest three---

- a) Typhoid
- b) Cholera
- c) Jaundice
- d) AIDS

Answer: c

Solution:

Jaundice is itself not a disease. It is the yellowing of skin and eyes which is the symptom of an underlying liver condition. The others are diseases.



SOLVE PAST RRB ALP PAPERS

Question 8:

Who won Men's singles title in the year of Wimbledon ?

- a) Roger Federer
- b) Rafael Nadal
- c) N. D. Rodick
- d) None of these

Answer:a

Question 9:

Which of the following states is at the top in cement production ?

- a) Rajasthan
- b) Tamilnadu
- c) Bihar
- d) None of these

Answer:a

Question 10:

Headquarters of South-Western Railway are located in--

- a) Bengaluru
- b) Hubli
- c) Belgaum
- d) Secunderabad

Answer: b

Question 11:

Light year is---

- a) Distance between the Earth and the Sun
- b) Distance travelled by light in a year
- c) Average distance between the Earth and the Moon
- d) None of these

Answer: b



TAKE CRACKU'S FREE RRB ALP MOCK

Question 12:

The following metal is used in storage batteries--

- a) Iron
- b) Copper
- c) Zinc
- d) Lead

Answer: d

Solution:

Lead is most commonly used in storage batteries

Question 13:

In absence of atmosphere, the sky will appear--

- a) Black
- b) White
- c) Blue
- d) Red

Answer: a

Question 14:

Physical structure of an adult human being is based on--

- a) 204 bones
- b) 206 bones
- c) 208 bones
- d) 214 bones

Answer: b

Question 15:

An error in computer programming is termed as--

- a) Bug
- b) Bit
- c) Wires
- d) None of these

Answer: a



SOLVE PAST RRB ALP PAPERS

Question 16:

The largest lake of Soft water of the world is---

- a) Lake Superior
- b) Lake Victoria
- c) Hardaiswan
- d) None of these

Answer: a

Question 17:

Which of the following is taken as crop ?

- a) Coffee
- b) Tea
- c) Rubber
- d) None of these

Answer: d

Question 18:

How many types of emergencies are there in Indian Constitution ?

- a) One
- b) Two
- c) Three
- d) Four

Answer: 3

Question 19:

Nita sold an article for Rs. 220 and earned a profit of 10%. At what cost should she sell to earn a profit of 30% ?

- a) Rs. 220
- b) Rs. 230
- c) Rs. 260
- d) Rs. 280

Answer: c

Solution:

$$CP * 110/100 = 220$$

$$\text{So, } CP = 200$$

To get a profit of 30%

$$SP = CP * 130/ 100 = 200 * 130/ 100 = 260 \text{ Rs.}$$



SOLVE PAST RRB ALP PAPERS

Question 20:

A seller sold $\frac{3}{4}$ th of his goods at 24% profit. He sold rest part of the goods at cost price. What is percentage of his profit ?

- a) 15
- b) 18
- c) 24
- d) 32

Answer: b

Solution:

Let there be 100 items worth 100 rupees total. So, the seller sells 75 at $75 * \frac{124}{100} = 93$ rupees. and 25 at 25 rupees.

Total profit = $93 + 25 - 100 = 18$ rupees

Profit % = $\frac{18}{100} = 18\%$

Question 21:

There are 40% women workers in an office. 40% women and 60% men of that office voted for in my favour. What is the percentage of total votes in my favour ?

- a) 24
- b) 42
- c) 50
- d) 52

Answer: d

Solution:

There are 40 women and 60 men in the group. 40 % of the women and 60% of the men = $40 * 40\% + 60 * 60\% = 52$

Question 22:

There is an article of Rs. 100. Its price is raised initially by 10% and then again by 10%. How many rupees have been increased ?

- a) 20
- b) 21
- c) 110
- d) 121

Answer: b

Solution:

Cost of the article is 100 Rs. Initial increase = 10%

So, cost = $100 * \frac{110}{100} = 110$ Rs

Second increase = 10 %

So, cost = $110 * \frac{110}{100} = 121$

Total increase = $121 - 100 = 21$ rupees

HIGHLY RATED RAILWAYS APP





SOLVE PAST RRB ALP PAPERS

Question 23:

A man went to his office on cycle at the rate of 10 km/hr and reached late by 6 minutes. When he increased the speed by 2 km/hr, he reached 6 minutes before time. What is the distance between his office and his departure point ?

- a) 6 km
- b) 7 km
- c) 12 km
- d) 16 km

Answer: c

Solution:

Let the distance be d.

$$D/10 = T + 1/10$$

$$D/12 = T - 1/10$$

So, D = 12 kilometers.

Question 24:

100 kms is the distance between the stations A and B. One train departed from A towards B at the rate of 50 km/hr and from B towards A at the rate of 75 km/hr. Both the trains departed simultaneously. At what distance from station A, both the trains will cross one -another ?

- a) 40 kms
- b) 20 kms
- c) 30 kms
- d) None of these

Answer: a

Solution:

$$\text{Distance from A} = 100 * 50 / (50 + 75) = 40 \text{ kms}$$

Question 25:

10 persons can build a wall in 8 days. How many persons can build this wall in half day ?

- a) 80
- b) 100
- c) 120
- d) 160

Answer: d

Solution:

10 people can build a wall in 8 days

80 people can build a wall in 1 day

160 people can build a wall in half day.

HIGHLY RATED RAILWAYS APP





SOLVE PAST RRB ALP PAPERS

Question 26:

A train of 150 metres crosses a railway bridge in 26 seconds at a speed of 90 km/hr. What is the length of this bridge ?

- a) 500 metres
- b) 60 metres
- c) 650 metres
- d) 550 metres

Answer: a

Solution:

$$90 \text{ kmph} = 90 * 5 / 18 = 25 \text{ m/s}$$

$$(150 + x) / 26 = 25$$

$$\text{So, } x = 500 \text{ mts}$$

Question 27:

Who is said to be the father of Kawwali/Qawwali ?

- a) Amir Khusro
- b) Moihaz-e-Shiraz
- c) Ziauddin Barni
- d) MilalShiraz

Answer: a

Question 28:

Dry ice is--

- a) Ice - dust
- b) Liquefied Nitrogen
- c) Liquefied Hydrogen
- d) Solid CO_{2}

Answer: d

Question 29:

Coins are studied in which of the following subjects ?

- a) Archaeology
- b) Historiography
- c) Numismatics
- d) Epigraphy

Answer: c

Question 30: Tulsidas was the poet of which of the following ?

(a) Ramcharit Manas (b) Adi Grantha (c) Soorsagar (d) Bhagwat Puran

Answer : a

HIGHLY RATED RAILWAYS APP

