



SSC CHSL 9 Jan 2017 Morning Shift

All rights reserved. No part of this publication may be reproduced, distributed, or transmitted in any form or by any means, electronic, mechanical, photocopying, recording or otherwise, or stored in any retrieval system of any nature without the permission of cracku.in, application for which shall be made to support@cracku.in

Reasoning

Instructions

For the following questions answer them individually

Question 1

Select the related word/letters/number from the given alternatives.

Pernicious : Lethal :: Indict : ?

- A Insolent
- B Impudent
- C Spoil
- D Accuse

Answer: D

Explanation:

Pernicious and Lethal are synonyms meaning having a harmful effect, similarly synonym of indict is *accuse*.

=> Ans - (D)

SSC CHSL Free Mock Test

Question 2

Select the related word/letters/number from the given alternatives.

FG : UT :: HI : ?

- A HI
- B GH
- C SR
- D ED

Answer: C

Explanation:

Expression = FG : UT :: HI : ?

Alphabets at the corresponding position from the reverse end are written.

Explanation:

Expression = $4 : 44 :: ? : 77$

The pattern followed is = $x : 11x$

Eg :- $4 : 11 \times 4 = 4 : 44$

Similarly, $7 \times 11 = 77$

=> Ans - (C)

SSC CHSL Previous Papers (DOWNLOAD PDF)

Question 5

Find out the odd word/letters/number/number pair from the given alternatives.

- A Zenith
- B Culminating point
- C Peak
- D Nadir

Answer: D

Explanation:

Zenith, culminating point and peak are synonyms meaning the highest point, while nadir means the lowest point, hence it is the odd one out.

=> Ans - (D)

Question 6

Find out the odd word/letters/number/number pair from the given alternatives.

- A TP
- B DH
- C WS
- D RN

Answer: B

Explanation:

(A) : T (-4 letters) = P

(B) : D (+4 letters) = H

(C) : W (-4 letters) = S

(D) : R (-4 letters) = N

=> Ans - (B)

Question 7

Find out the odd word/letters/number/number pair from the given alternatives.

A 431

B 936

C 871

D 652

Answer: D

Explanation:

The positive difference between the first two digits is equal to the third digit, but $6 - 5 \neq 2$, hence 652 is the odd one out.

=> Ans - (D)

SSC CGL MTS Previous Papers (DOWNLOAD PDF)

Question 8

Find out the odd word/letters/number/number pair from the given alternatives.

A 5210

B 7214

C 9218

D 7426

Answer: D

Explanation:

The product of the first two digits is equal to the last two digits, but $7 \times 4 \neq 26$, hence 7426 is the odd one out.

=> Ans - (D)

Question 9

A series is given with one term missing. Choose the correct alternative from the given ones that will complete the series.

Rajasthan, Madhya Pradesh, Maharashtra, ?

- A Uttar Pradesh
- B Jammu Kashmir
- C Tamil Nadu
- D Assam

Answer: A

Explanation:

Sequence of states according to area in decreasing order.

= Rajasthan -> Madhya Pradesh -> Maharashtra -> Uttar Pradesh

=> Ans - (A)

Question 10

A series is given with one term missing. Choose the correct alternative from the given ones that will complete the series.

200, 100, 50, 25, 12.5, 6.25, ?

- A 2.125
- B 3.025
- C 3.125
- D 2.025

Answer: C

Explanation:

Each number is divided by 2

$$200 \div 2 = 100$$

$$100 \div 2 = 50$$

$$50 \div 2 = 25$$

$$25 \div 2 = 12.5$$

$$12.5 \div 2 = 6.25$$

$$6.25 \div 2 = 3.125$$

=> Ans - (C)

SSC CGL GD Constable Previous Papers (DOWNLOAD PDF)

Question 11

In the following question, two statements are given each followed by two conclusions I and II. You have to consider the statements to be true even if they seem to be at variance from commonly known facts. You have to decide which of the given conclusions, if any, follows from the given statements.

Statements:

(I) a R b

(II) b R a

Conclusion:

(I) This relation is symmetric.

(II) This is a relation.

- A Conclusion I follows
- B Conclusion II follows
- C Neither I nor II follows
- D Both I and II follows

Answer: B

Question 12

A series is given with one term missing. Choose the correct alternative from the given ones that will complete the series.

?, ONM, GFE, XWV

- A TUV
- B VUT
- C GHI
- D PQR

Answer: B

Explanation:

Expression : ?, ONM, GFE, XWV

The pattern followed in each letter of the terms is :

1st letter : V (-7 letters) = O (-8 letters) = G (-9 letters) = X

2nd letter : U (-7 letters) = N (-8 letters) = F (-9 letters) = W

3rd letter : T (-7 letters) = M (-8 letters) = E (-9 letters) = V

Thus, missing term = **VUT**

=> Ans - (B)

Question 13

A series is given with one term missing. Choose the correct alternative from the given ones that will complete the series.

RS, ? , BC, GH

A WX

B XY

C UV

D GE

Answer: A

Explanation:

Expression : RS, ? , BC, GH

The pattern followed in each letter of the terms is :

1st letter : R (+5 letters) = W (+5 letters) = B (+5 letters) = G

2nd letter : S (+5 letters) = X (+5 letters) = C (+5 letters) = H

Thus, missing term = **WX**

=> Ans - (A)

SSC Stenographer Previous Papers (DOWNLOAD PDF)

Question 14

Farhan travels 4 km in the north-east direction and then turns towards the south-east to travel another 3 km. How far is he now from his original position?

A 4 km

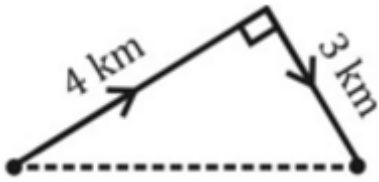
B 6 km

C 7 km

D 5 km

Answer: D

Explanation:



Farhan travels 4 km in the north-east direction and then turns towards the south-east to travel another 3 km.

$$\begin{aligned} \text{Thus, distance between original and final position} &= \sqrt{(4)^2 + (3)^2} \\ &= \sqrt{16 + 9} = \sqrt{25} = 5 \text{ km} \end{aligned}$$

=> Ans - (D)

Question 15

Arrange the given words in the sequence in which they occur in the dictionary.

- i. Arise
- ii. Abysmal
- iii. Agility
- iv. Accrue

- A ii, i, iv, iii
- B iii, iv, ii, i
- C ii, iv, i, iii
- D ii, iv, iii, i

Answer: D

Explanation:

As per the order of dictionary :

= Abysmal -> Accrue -> Agility -> Arise

≡ ii, iv, iii, i

=> Ans - (D)

Question 16

In a certain code language, "LOYALTY" is written as "MPZBMUZ". How is "PROCLAIM" written in that code language?

- A QSPDDBJN
- B QSPDBMJN
- C QSPDMBJN
- D QPSDMBJN

Answer: C

Explanation:

"LOYALTY" is written as "MPZBMUZ"

The pattern followed is :

L	O	Y	A	L	T	Y
(+1)	(+1)	(+1)	(+1)	(+1)	(+1)	(+1)
M	P	Z	B	M	U	Z

Similarly, for PROCLAIM :

P	R	O	C	L	A	I	M
(+1)	(+1)	(+1)	(+1)	(+1)	(+1)	(+1)	(+1)
Q	S	P	D	M	B	J	N

=> Ans - (C)

SSC CGL Previous Papers (DOWNLOAD PDF)

Question 17

In the following question, select the missing number form the given series

256	289	484
6	5	6
96	85	?

A 124

B 132

C 120

D 125

Answer: B

Explanation:

In each column, the first number is the square of the number which is obtained, by dividing the other two.

$$\text{Eg :- } \left(\frac{96}{6}\right)^2 = (16)^2 = 256$$

$$\text{and } \left(\frac{85}{5}\right)^2 = (17)^2 = 289$$

$$\text{Similarly, } \left(\frac{x}{6}\right)^2 = 484 = (22)^2$$

$$\Rightarrow x = 22 \times 6 = 132$$

=> Ans - (B)

Question 18

If "S" denotes "multiplied by", "V" denotes "subtracted from", "M" denotes "added to" and "L" denotes "divided by", then $8 \text{ V } 10 \text{ M } 96 \text{ L } 6 \text{ S } 9 = ?$

- A 140
- B 142
- C 134
- D 144

Answer: B

Explanation:

Expression : $8 \text{ V } 10 \text{ M } 96 \text{ L } 6 \text{ S } 9 = ?$

$$\equiv 8 - 10 + 96 \div 6 \times 9$$

$$= -2 + (16 \times 9)$$

$$= -2 + 144 = 142$$

=> Ans - (B)

Question 19

Which set of letters when sequentially placed at the gaps in the given letter series shall complete it?

_qr_srq_p_rs_r_p

- A pqrsss
- B qprsss
- C pspqsq
- D pspqqq

Answer: C

Explanation:

The pattern followed is that in groups of 4, the term 'pqrs' is alternatively repeated in this and reverse order.

$$= \text{pqrs srqp pqrs srqp}$$

=> Ans - (C)

SSC CGL Free Mock Test (Latest Pattern)

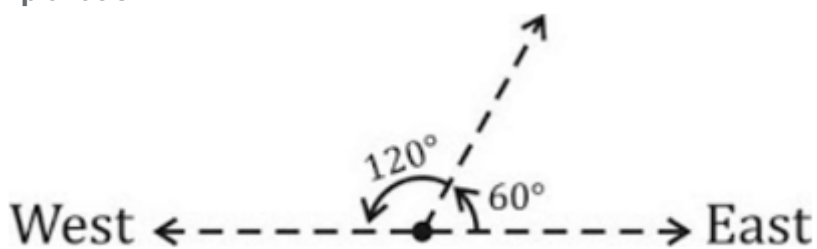
Question 20

A man is facing east. He turns 60 degrees in the anticlockwise direction and then again turns another 120 degrees in the same direction. Which direction is he facing now?

- A East
- B North-west
- C South-east
- D West

Answer: D

Explanation:



The man is initially facing east. He turns 60 degrees in the anticlockwise direction and face north-east, again he turns 120 degrees in the anticlockwise direction.

Thus, he is facing west at the end.

=> Ans - (D)

Question 21

A word is represented by only one set of numbers as given in any one of the alternatives. The sets of numbers given in the alternatives are represented by two classes of alphabets as shown in the given two matrices. The columns and rows of Matrix-I are numbered from 0 to 4 and that of Matrix-II are numbered from 5 to 9. A letter from these matrices can be represented first by its row and next by its column, for example, 'N' can be represented by 21, 67 etc. and 'R' can be represented by 66, 57 etc. Similarly, you have to identify the set for the word 'GRAIN'.

Matrix - I

	0	1	2	3	4
0	Q	O	A	N	K
1	W	I	N	H	L
2	E	N	S	G	O
3	N	Y	D	O	M
4	R	T	O	F	A

Matrix - II

	5	6	7	8	9
5	Z	M	R	S	Q
6	X	R	N	W	A
7	C	S	Y	E	N
8	S	N	T	E	S
9	V	B	E	R	G

- A 99, 33, 76, 88, 76
- B 23, 24, 76, 75, 89
- C 23, 66, 69, 11, 21
- D 99, 20, 89, 11, 44

Answer: C

Explanation:

- (A) : 99, 33, 76, 88, 76 = GOSES
- (B) : 23, 24, 76, 75, 89 = GOSCS
- (C) : 23, 66, 69, 11, 21 = **GRAIN**
- (D) : 99, 20, 89, 11, 44 = GESIA

=> Ans - (C)

Question 22

Introducing a woman, Anjali says, "She is the wife of my daughter's only brother". How is the girl related to Anjali?

- A Niece
- B Daughter-in-law
- C Sister
- D Cousin

Answer: B

Explanation:

Anjali's daughter's only brother = Anjali's son

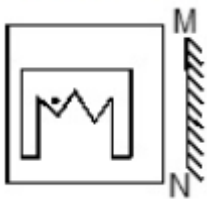
Now, the girl is the wife of Anjali's son, => that girl is Anjali's daughter-in-law

=> Ans - (B)

SSC Stenographer Previous Papers (Latest Pattern)

Question 23

If a mirror is placed on the line MN, then which of the answer figures is the right image of the given figure ?



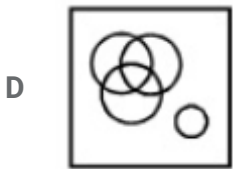
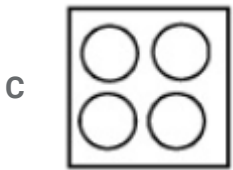
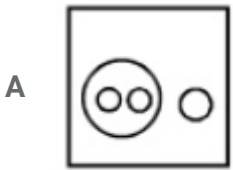


Answer: B

Question 24

Identify the diagram that best represents the relationship among the given classes.

Computer hardware, Monitor, Keyboard, Operating system

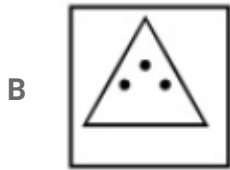


Answer: A

Question 25

A piece of paper is folded and punched as shown below in the question figures. From the given figures, indicate how it will appear when opened.





Answer: A

SSC GD Constable Free Mock Test (Latest Pattern)

General Awareness

Instructions

For the following questions answer them individually

Question 26

Which of the following language is used to access data from a database?

A ASP.Net

B Java

C SQL

D C++

Answer: C

SSC MTS Free Mock Test (Latest Pattern)

Question 27

Electric tram was invented by?

- A Fyodor Pirotsky
- B Arthur Pitney
- C Fritz Pfleumer
- D Stephen Perry

Answer: A

Question 28

Which of the following is a symptom of haemophilia?

- A Night Blindness
- B No clotting of Blood
- C Rickets
- D Loss of haemoglobin

Answer: B

Question 29

The process of pollination by birds is also known as

- A Hydrophily
- B Entomophily
- C Embryophily
- D Ornithophily

Answer: D

SSC CPO Free Mock Test (Latest Pattern)

Question 30

Spiders belong to the phylum

- A Mollusca
- B Annelida
- C Cnidaria
- D Arthropoda

Answer: D

Question 31

Which among the following has the maximum density?

- A Water
- B Ice
- C Ethylene
- D Acetone

Answer: A

Question 32

What happens in an oxidation reaction?

- A Protons are lost.
- B Electrons are lost
- C Neutrons are lost.
- D Electrons are gained.

Answer: B

25 SSC CHSL MOCKS 149

Question 33

Nalanda Mahavihara site is in

- A Rajasthan
- B Assam

- C Bihar
- D Gujarat

Answer: C

Question 34

The Desert Festival is held in _____.

- A Barmer
- B Jaisalmer
- C Sahara
- D Thar

Answer: B

Question 35

In 2015 the nominal rate of interest in country was 6%, and the inflation rate then was 1.5%. So real rate of interest in 2015 was

- A 7.50%
- B 4.50%
- C 4%
- D 0.25%

Answer: B

SSC CHSL Important Questions and Answers (Download PDF)

Question 36

The goods which people consume more, when their price rises are called _____.

- A Essential goods
- B Capital goods
- C Veblen goods
- D Giffen goods

Answer: D

Question 37

Who coined the term "Ecology"?

- A Ernst Haeckel
- B G. Evelyn Hutchinson
- C Hugo de Vries
- D Robert Brown

Answer: A

Question 38

Banana freckle is a plant disease. It is caused by a

- A Virus
- B Fungus
- C Bacteria
- D Insect

Answer: B

SSC CHSL Free Videos (Youtube)

Question 39

Pablo Picasso was from ____.

- A India
- B UK
- C Spain
- D Italy

Answer: C

Question 40

Which of the following Indian chilly is considered one of the hottest in the world?

- A Bhut Jolokia
- B Bhut Mahabora
- C Lal Chitin
- D Lal Shamak

Answer: A

Question 41

Name the hottest planet.

- A Mercury
- B Venus
- C Neptune
- D Mars

Answer: B

SSC CHSL Syllabus

Question 42

Who killed Mahatma Gandhi?

- A Nathuram Godse
- B James Russell
- C Sucha Singh Bassi
- D Kunder Mehta

Answer: A

Question 43

What was the capital of Maharaja Ranjit Singh's kingdom?

- A Patna
- B Fatehpur Sikri

C Islamabad

D Lahore

Answer: D

Question 44

_____ is the 2016 Oscar Winner for Best Actor.

A Leonardo DiCaprio

B Bryan Cranston

C Matt Damon

D Michael Fassbender

Answer: A

SSC CHSL Expected Cutt off

Question 45

Who discovered theory of relativity?

A Isaac Newton

B Albert Einstein

C Niel Bohr

D Michael Faraday

Answer: B

Question 46

Which device is used to measure the depth of ocean?

A Lexometer

B Nanometer

C Fathometer

D Hydrometer

Answer: C

Question 47

The movement Objections Resolution to guide the deliberations of the Assembly was started by

- A Jawaharlal Nehru
- B Kiran Desai
- C K Natwar Singh
- D K.M. Munshi

Answer: A

SSC CHSL Study Material

Question 48

Rajya Sabha member has tenure of _____ years.

- A 8
- B 6
- C 4
- D 2

Answer: B

Question 49

Limba Ram is associated with which Sport?

- A Javelin Thrower
- B Archery
- C Cricket
- D Badminton

Answer: B

Question 50

Who wrote the book 'Glimpses of World History'?

- A Shashi Tharoor
- B Mahatma Gandhi
- C Nirad C Chaudhuri
- D Jawaharlal Nehru

Answer: D

SSC CHSL Free App

Mathematics

Instructions

For the following questions answer them individually

Question 51

The difference between simple and compound interests compounded annually on a certain sum of money for 2 years at 16% per annum is Rs 320. What is the value of given sum (in Rs)?

- A 25000
- B 50000
- C 37500
- D 12500

Answer: D

Explanation:

Let the given sum = Rs. $100x$

Rate of interest = 16% and time period = 2 years

$$\text{Compound interest} = P\left[\left(1 + \frac{R}{100}\right)^T - 1\right]$$

$$= 100x\left[\left(1 + \frac{16}{100}\right)^2 - 1\right]$$

$$= 100x\left[\left(\frac{29}{25}\right)^2 - 1\right] = 100x\left(\frac{841-625}{625}\right)$$

$$= 100x \times \frac{216}{625} = \frac{864x}{25}$$

$$\text{Simple interest} = \frac{P \times R \times T}{100}$$

$$= \frac{100x \times 16 \times 2}{100} = 32x$$

$$\Rightarrow \text{Difference between simple and compound interests} = \frac{864x}{25} - 32x = 320$$

$$\Rightarrow \frac{864x - 800x}{25} = 320$$

$$\Rightarrow 64x = 320 \times 25$$

$$\Rightarrow x = \frac{320 \times 25}{64} = 5 \times 25 = 125$$

$$\therefore \text{Value of given sum} = 100 \times 125 = \text{Rs.}12,500$$

SSC CHSL Free Mock Test

Question 52

Of the 5 numbers whose average is 76, the first is $\frac{3}{7}$ times the sum of other 4. The first number is

A 171

B 114

C 76

D 228

Answer: B

Explanation:

Sum of the five numbers = $5 \times 76 = 380$

Let the first number = x and Sum of other 4 numbers = y

According to ques, $\Rightarrow x = \frac{3}{7}y$

Also, $\Rightarrow x + y = 380$

$$\Rightarrow \frac{3y}{7} + y = 380$$

$$\Rightarrow \frac{3y + 7y}{7} = 380$$

$$\Rightarrow 10y = 380 \times 7 = 2660$$

$$\Rightarrow y = \frac{2660}{10} = 266$$

$$\therefore \text{The first number} = x = \frac{3}{7} \times 266$$

$$= 3 \times 88 = 114$$

Question 53

What is the equation of the line passing through the point (2,-3) and making an angle of -45° with the positive X-axis?

A $x - y = -5$

B $x - y = -1$

C $x + y = -5$

D $x + y = -1$

Answer: D

Explanation:

Slope of line making an angle of -45° with the positive x-axis = $\tan(-45^\circ) = -\tan(45^\circ) = -1$

Equation of line passing through (x_1, y_1) and making slope m is $(y - y_1) = m(x - x_1)$

Equation of line passing through $(2, -3)$ and slope = -1

$$\Rightarrow (y + 3) = -1(x - 2)$$

$$\Rightarrow y + 3 = -x + 2$$

$$\Rightarrow x + y = 2 - 3 = -1$$

Question 54

If $2(3x-2) < 6-3x$ and $6x + 2(6-x) > 2x-2$, then x can take which of the following values?

A -8

B 5

C 8

D -5

Answer: D

Explanation:

Expression 1 : $2(3x-2) < 6-3x$

$$\Rightarrow 6x - 4 < 6 - 3x$$

$$\Rightarrow 6x + 3x < 6 + 4 \Rightarrow 9x < 10$$

$$\Rightarrow x < \frac{10}{9}$$

Expression 2 : $6x + 2(6-x) > 2x-2$

$$\Rightarrow 6x + 12 - 2x > 2x - 2$$

$$\Rightarrow 4x - 2x > -2 - 12 \Rightarrow 2x > -14$$

$$\Rightarrow x > \frac{-14}{2} > -7$$

Combining above inequalities, $-7 < x < \frac{10}{9}$

The only number that satisfies above inequality is -5

\Rightarrow Ans - (D)

SSC CHSL Previous Papers (DOWNLOAD PDF)

Question 55

If $(36 - 16x) - (4x - 8) = 4$, then the value of x is

- A 4
- B 2
- C 6
- D 3

Answer: B

Explanation:

Expression : $(36 - 16x) - (4x - 8) = 4$

$$\Rightarrow 36 - 16x - 4x + 8 = 4$$

$$\Rightarrow -20x = 4 - 44 = -40$$

$$\Rightarrow x = \frac{-40}{-20} = 2$$

\Rightarrow Ans - (B)

Question 56

Marked price of an item is Rs 400. On purchase of 1 item discount is 6% and on purchase of 4 items discount is 24%. Rachita buys 5 items, what is the effective discount?

- A 34 percent
- B 20.4 percent
- C 12.8 percent
- D 23.25 percent

Answer: B

Explanation:

Marked price of item = Rs. 400

Amount saved on buying 1 item = $\frac{6}{100} \times 400 = Rs.24$

Marked price of 4 items = $4 \times 400 = Rs. 1600$

Amount saved on buying 4 items = $\frac{24}{100} \times 1600 = Rs.384$

Thus, on buying 5 items, total amount saved = $24 + 384 = Rs. 408$

Total marked price of 5 items = 400 + 1600 = Rs. 2000

$$\therefore \text{Effective discount} = \frac{408}{2000} \times 100$$

$$= \frac{204}{10} = 20.4\%$$

Question 57

In a triangle the length of the side opposite the angle which measures 60° is $6\sqrt{3}$ cm. What is the length of the side opposite to the angle which measures 90° ?

A $12\sqrt{3}$ cm

B 6 cm

C 12 cm

D $3\sqrt{3}$ cm

Answer: C

Explanation:

In the given triangle, two angles are 90° and 60° , \Rightarrow Third angle = 30°

In a 30-60-90 triangle, the hypotenuse is always twice as long as the side opposite the 30° angle and the side opposite the 60° angle is $\sqrt{3}$ times as long as the side opposite the 30° angle.

The ratio of sides opposite 30° , 60° and 90° angles = $1 : \sqrt{3} : 2$

Length of the side opposite the 60° angle = $6\sqrt{3}$ cm

$$\Rightarrow \text{Length of side opposite the } 90^\circ \text{ angle} = \frac{2}{\sqrt{3}} \times 6\sqrt{3} = 12 \text{ cm}$$

\Rightarrow Ans - (C)

SSC CGL MTS Previous Papers (DOWNLOAD PDF)

Question 58

What is the value of $\cot 210^\circ$?

A $1/\sqrt{3}$

B $-1/\sqrt{3}$

C $\sqrt{3}$

D $-\sqrt{3}$

Answer: C

Explanation:

Expression : $\cot 210^\circ$

$$= \cot(180^\circ + 30^\circ) = \cot 30^\circ$$

$$= \sqrt{3}$$

=> Ans - (C)

Question 59

$$199994 \times 200006 = ?$$

A 39999799964

B 39999999864

C 39999999954

D 39999999964

Answer: D

Explanation:

$$\text{Expression : } 199994 \times 200006$$

$$= (200000 - 6) \times (200000 + 6)$$

$$= (200000)^2 - (6)^2$$

$$= 40000000000 - 36 = 39999999964$$

=> Ans - (D)

Question 60

A missile travels at 1260 km/h. How many metres does it travel in one second?

A 322 metres

B 369 metres

C 384 metres

D 350 metres

Answer: D

Explanation:

$$\text{Speed of missile} = 1260 \text{ km/hr}$$

$$\Rightarrow \text{Speed in m/s} = 1260 \times \frac{5}{18}$$

$$= 5 \times 70 = 350 \text{ m/s}$$

\therefore In 1 second, it travels 350 metres

=> Ans - (D)

SSC CGL GD Constable Previous Papers (DOWNLOAD PDF)

Question 61

If $\cot(A + B) = x$, then value of x is

- A $(\cot A \cot B + 1)/(\cot B - \cot A)$
- B $(\cot A \cot B + 1)/(\cot B + \cot A)$
- C $(\cot A \cot B - 1)/(\cot B + \cot A)$
- D $(\cot A \cot B - 1)/(\cot B - \cot A)$

Answer: C

Explanation:

Expression : $\cot(A + B) = x$

$$\begin{aligned} &= \frac{\cos(A+B)}{\sin(A+B)} \\ &= \frac{\cos A \cos B - \sin A \sin B}{\sin A \cos B + \cos A \sin B} \end{aligned}$$

Dividing both numerator and denominator by $(\sin A \sin B)$, we get :

$$\begin{aligned} &= \frac{\cos A \cos B - \sin A \sin B}{\sin A \sin B} \div \frac{\sin A \cos B + \cos A \sin B}{\sin A \sin B} \\ &= \left(\frac{\cos A \cos B}{\sin A \sin B} - 1 \right) \div \left(\frac{\cos B}{\sin B} + \frac{\cos A}{\sin A} \right) \\ &= \frac{\cot A \cot B - 1}{\cot B + \cot A} \end{aligned}$$

=> Ans - (C)

Question 62

A shopkeeper, sold almonds at the rate Rs 1250 per kg and bears a loss of 7%. Now if he decides to sell it at Rs 1375 per kg, what will be the result?

- A 4.6 percent gain
- B 2.3 percent loss
- C 2.3 percent gain
- D 4.6 percent loss

Answer: C

Explanation:

Let Cost price = Rs. x

Selling price = Rs. 1250

$$\Rightarrow \text{Loss \%} = \frac{x-1250}{x} \times 100 = 7$$

$$\Rightarrow \frac{x-1250}{x} = \frac{7}{100}$$

$$\Rightarrow 100x - 125000 = 7x$$

$$\Rightarrow x = \frac{125000}{93} \approx 1344$$

If selling price = Rs. 1375

$$\Rightarrow \text{Profit \%} = \frac{1375-1344}{1344} \times 100 \approx 2.3\%$$

Question 63

If the volume of a cylinder is 3850 cubic cm and height is 25 cm, what is its radius? (Take $\pi = 22/7$)

- A 7 cms
- B 14 cms.
- C 3.5 cms.
- D 10.5 cms

Answer: A

Explanation:

Let radius of cylinder = r cm and height = 25 cm

Volume of cylinder = 3850 cm^3

$$\Rightarrow \pi r^2 h = 3850$$

$$\Rightarrow \frac{22}{7} \times (r^2) \times 25 = 3850$$

$$\Rightarrow r^2 = \frac{3850 \times 7}{22 \times 25} = \frac{77 \times 7}{11}$$

$$\Rightarrow r = \sqrt{7 \times 7} = 7 \text{ cm}$$

SSC Stenographer Previous Papers (DOWNLOAD PDF)

Question 64

If $\tan^2 A - \sin^2 A = x$, then value of x is

- A $\tan^2 A \sin^2 A$
- B $\cot^2 A \operatorname{cosec}^2 A$
- C $\tan A \sin A$

D $\cot A \operatorname{cosec} A$

Answer: A

Explanation:

Expression : $\tan^2 A - \sin^2 A = x$

$$= \frac{\sin^2 A}{\cos^2 A} - \sin^2 A$$

$$= \sin^2 A \left(\frac{1}{\cos^2 A} - 1 \right)$$

$$= \sin^2 A \left(\frac{1 - \cos^2 A}{\cos^2 A} \right) = \sin^2 A \left(\frac{\sin^2 A}{\cos^2 A} \right)$$

$$= \tan^2 A \sin^2 A$$

Question 65

Madhur works 2 times faster than Sagar. If Sagar can complete a job alone in 18 days, then in how many days can they together finish the job?

A 5 days

B 2 days

C 6 days

D 4 days

Answer: C

Explanation:

Let total work to be done = 18 units

Sagar's efficiency = $\frac{18}{18} = 1$ units/day

Madhur works 2 times faster than Sagar, \Rightarrow Madhur's efficiency = $1 \times 2 = 2$ units/day

Madhur and Sagar 1 day's work = $1 + 2 = 3$ units/day

\Rightarrow Time taken by them to finish the work together = $\frac{18}{3} = 6$ days

Question 66

The bus fare between two cities is increased in the ratio 11:18. What would be the increase in the fare, if the original fare is Rs 550?

A Rs 350

B Rs 900

C Rs 180

D Rs 360

Answer: A

Explanation:

Let original fare = Rs. $11x$

=> New fare = Rs. $18x$

Also, original fare = $550 = 11x$

$$\Rightarrow x = \frac{550}{11} = 50$$

\therefore Increase in fare = $18x - 11x = 7x$

$$= 7 \times 50 = \text{Rs.}350$$

SSC CGL Previous Papers (DOWNLOAD PDF)

Question 67

Dodecahedron has 30 edges. How many vertices does it have?

A 12

B 16

C 20

D 10

Answer: C

Explanation:

Euler's formula : $V + F - E = 2$ where V is number of vertices , F is number of faces and E is number of edges.

Dodecahedron has 30 edges and 12 faces.

$$\Rightarrow V = 2 + E - F = 2 + 30 - 12$$

$$\Rightarrow V = 32 - 12 = 20$$

=> Ans - (C)

Question 68

If $xy = 22$ and $x^2 + y^2 = 100$, then what will be the value of $(x + y)$?

A 12

B 144

C 72

D 6

Answer: A

Explanation:

Given : $(x^2 + y^2) = 100$ and $xy = 22$

Using $(x + y)^2 = x^2 + y^2 + 2xy$

$\Rightarrow (x + y)^2 = 100 + (2 \times 22)$

$\Rightarrow (x + y) = \sqrt{144} = 12$

\Rightarrow Ans - (A)

Question 69

Which of the following equations has equal roots?

A $x^2 - 13x + 22 = 0$

B $x^2 - 7x + 10 = 0$

C $x^2 - 2x + 26 = 0$

D $x^2 + 8x + 16 = 0$

Answer: D

Explanation:

A quadratic equation : $ax^2 + bx + c = 0$ has equal roots iff Discriminant, $D = b^2 - 4ac = 0$

(A) : $x^2 - 13x + 22 = 0$

$\Rightarrow D = (-13)^2 - 4(1)(22) = 169 - 88 = 81 \neq 0$

(B) : $x^2 - 7x + 10 = 0$

$\Rightarrow D = (-7)^2 - 4(1)(10) = 49 - 40 = 9 \neq 0$

(C) : $x^2 - 2x + 26 = 0$

$\Rightarrow D = (-2)^2 - 4(1)(26) = 4 - 104 = -100 \neq 0$

(D) : $x^2 + 8x + 16 = 0$

$\Rightarrow D = (8)^2 - 4(1)(16) = 64 - 64 = 0$

Thus, the equation : $x^2 + 8x + 16 = 0$ has equal roots.

\Rightarrow Ans - (D)

SSC CGL Free Mock Test (Latest Pattern)

Question 70

The point P(5,-2) divides the segment joining the points (x,0) and (0,y) in the ratio 2:5. What is the value of x and y?

A $x = -7; y = 7$

B $x = 3; y = -3$

C $x = 7; y = -7$

D $x = -3; y = 3$

Answer: C

Explanation:

Using section formula, the coordinates of point that divides line joining A = (x_1, y_1) and B = (x_2, y_2) in the ratio a : b

$$= \left(\frac{ax_2 + bx_1}{a+b}, \frac{ay_2 + by_1}{a+b} \right)$$

Now, point P (5,-2) divides (x,0) and (0,y) in ratio = 2 : 5

$$\Rightarrow 5 = \frac{(2 \times 0) + (5 \times x)}{2+5}$$

$$\Rightarrow x = \frac{5 \times 7}{5} = 7$$

$$\text{Similarly, } -2 = \frac{(2 \times y) + (5 \times 0)}{2+5}$$

$$\Rightarrow y = -1 \times 7 = -7$$

Question 71

Two students appeared for an examination. One of them secured 20 marks more than the other and his marks were 55% of the sum of their marks. The marks obtained by them are

A 92 and 72

B 83 and 63

C 110 and 90

D 64 and 44

Answer: C

Explanation:

Let marks scored by 1st student = x

$$\Rightarrow \text{Marks scored by another student} = (x + 20)$$

$$\text{According to question, } \Rightarrow (x + 20) = \frac{55}{100} \times (x + x + 20)$$

$$\Rightarrow x + 20 = \frac{11}{10} \times (x + 10)$$

$$\Rightarrow 10x + 200 = 11x + 110$$

$$\Rightarrow 11x - 10x = 200 - 110 = 90$$

$$\Rightarrow x = 90$$

\therefore Marks scored by other student = $90 + 20 = 110$

Question 72

Refer the below data table and answer the following question

	Number of employees	Annual Salary (in lakh)	Bonus as percent of annual salary
Manager	3	54	60%
Executive	6	16	20%
Trainee	1	2	20%

What is the average bonus in rupees?

- A 1168000
- B 11680000
- C 240000
- D 360000

Answer: A

Explanation:

Total bonus of managers (in lakh) = $3 \times 54 \times \frac{60}{100} = 97.2$ lakhs

Total bonus of executive (in lakh) = $6 \times 16 \times \frac{20}{100} = 19.2$ lakhs

Total bonus of trainee (in lakh) = $1 \times 2 \times \frac{20}{100} = 0.4$ lakhs

\Rightarrow Average bonus in rupees = $\frac{(97.2+19.2+0.4)}{(3+6+1)}$

= $\frac{116.8}{10} = 11.68$ lakhs = 1168000

SSC Stenographer Previous Papers (Latest Pattern)

Question 73

Refer the below data table and answer the following question

	2011	2012	2013	2014	2015
Company A	1000	2000	3000	3000	2000
Company B	2000	1000	4000	1000	2000
Company C	3000	5000	5000	4000	3000

For which of the following pairs of years the total exports from the three Companies together are equal?
(Note: Figures given are in lakh rupees)

- A 2011 & 2013
- B 2012 & 2014
- C 2011 & 2012
- D 2014 & 2015

Answer: B

Explanation:

Total exports from the three companies together in :

$$2011 = 1000 + 2000 + 3000 = 6000$$

$$2012 = 2000 + 1000 + 5000 = 8000$$

$$2013 = 3000 + 4000 + 5000 = 12000$$

$$2014 = 3000 + 1000 + 4000 = 8000$$

$$2015 = 2000 + 2000 + 3000 = 7000$$

Clearly, total exports in 2012 and 2014 are equal to 8000

=> Ans - (B)

Question 74

Refer the below data table and answer the following question

Year	Profit or loss in Rs. Crore
2011	-10
2012	-20
2013	-5
2014	20
2015	25

What was the total profit or loss of the company in last 5 years ?

- A Loss of Rs 10 crores

- B Profit of Rs 20 crores
- C Profit of Rs 10 crores
- D Loss of Rs 20 crores

Answer: C

Explanation:

Total profit or loss in Rs. crore in last 5 years

$$= -10 - 20 - 5 + 20 + 25 = 45 - 35$$

= Rs. 10 crore

Since, it is positive, thus profit of Rs. 10 crore

=> Ans - (C)

Question 75

Refer the below data table and answer the following question

India's Exports in 2015	Value in million US\$
Jewellery	500
Software	825
Cotton	550
Steel	850
Electronics	750

Software was what percent of total exports ?

- A 26.24 percent
- B 28.74 percent
- C 21.24 percent
- D 23.74 percent

Answer: D

Explanation:

Value in millions of software = 825

Total exports = 500 + 825 + 550 + 850 + 750 = 3475

$$\Rightarrow \% \text{ of software in total exports} = \frac{825}{3475} \times 100$$

$$= \frac{3300}{139} = 23.74\%$$

=> Ans - (D)

English

Instructions

For the following questions answer them individually

Question 76

Rearrange the parts of the sentence in correct order.

His exact date of birth is not known

P- but it is believed that he was born in

Q- late May and later on he decided to celebrate May 29 as his birthday,

R- as this was the date he climbed Everest

A PRQ

B PQR

C QRP

D RPQ

Answer: B

SSC MTS Free Mock Test (Latest Pattern)

Question 77

Rearrange the parts of the sentence in correct order.

Today, less privileged white

P- Americans are considered to be

Q- and pathologists predominates

R- in crisis, and the language of sociologists

A PRQ

B QPR

C RPQ

D QRP

Answer: A

Question 78

In the following question, a sentence has been given in Direct/Indirect speech. Out of the four alternatives suggested, select the one which best express the same sentence in Indirect/Direct speech.

Vicky said, "I clean my teeth daily."

- A Vicky said he cleans his teeth daily.
- B Vicky says he cleans his teeth daily.
- C Vicky said that he cleaned his teeth daily.
- D Vicky said that he used to clean his teeth daily.

Answer: C

Question 79

In the following question, the sentence given with blank to be filled in with an appropriate word. Select the correct alternative out of the four and indicate it by selecting the appropriate option.

Nobody gets _____ with a pretentious smug.

- A along
- B up
- C about
- D through

Answer: A

SSC CPO Free Mock Test (Latest Pattern)

Question 80

Improve the bracketed part of the sentence.

As the financial situation worsened we realized that we were heading (toward) a disaster.

- A along
- B into
- C for
- D no improvement

Answer: C

Question 81

Improve the bracketed part of the sentence.

After today's terrible test I am sure that my teacher's opinion (about) me will change for the worse.

- A for
- B of
- C in
- D no improvement

Answer: D

Question 82

In the following question, out of the four alternatives, select the alternative which best expresses the meaning of the idiom/phrase.

Actions speak louder than words

- A Achievers are better than those who talk big
- B No action can compensate for saying bad words
- C A pen is mightier than a sword
- D What someone does mean more than what they say they will do

Answer: D

25 SSC CHSL MOCKS 149

Question 83

Select the antonym of coalesce

- A separate
- B adhere
- C cleave
- D amalgamate

Answer: A

Question 84

Select the antonym of loiter

- A lag
- B hasten
- C amble
- D loll

Answer: B

Question 85

In the following question, out of the four alternatives, select the alternative which is the best substitute of the phrase.

The outer layer of the cerebrum (part of the brain), composed of folded grey matter, plays an important role in the consciousness.

- A victor
- B cortex
- C scrub
- D capered

Answer: B

SSC CHSL Important Questions and Answers (Download PDF)

Question 86

In the following question, some part of the sentence may have errors. Find out which part of the sentence has an error and select the appropriate option. If a sentence is free from error, select 'No Error'.

I was taken by surprise (A)/when I came(B)/face to face with my school friend.(C)/No error(D)

- A A
- B B
- C C
- D D

Answer: D

Question 87

In the following question, out of the four alternatives, select the alternative which is the best substitute of the phrase.

A hot spring in which water intermittently boils, pushing a tall column of water and steam into the air.

- A geyser
- B smite
- C brew
- D pitted

Answer: A

Question 88

Select the word with the correct spelling.

- A syllabus
- B encroach
- C coalesse
- D adhetion

Answer: B

SSC CHSL Free Videos (Youtube)

Question 89

Select the word with the correct spelling.

- A sargeons
- B divorsee
- C depicted
- D parlancee

Answer: C

Question 90

Select the synonym of gregarious

- A introvert
- B melancholy
- C affable
- D pensive

Answer: C

Question 91

In the following question, some part of the sentence may have errors. Find out which part of the sentence has an error and select the appropriate option. If a sentence is free from error, select 'No Error'.

The factory complex houses a shop-floor(A)/and 10 cubicles for the staff in an area(B)/of about thousand squares meters.(C)/No error(D)

- A A
- B B
- C C
- D D

Answer: C

SSC CHSL Syllabus

Question 92

In the following question, the sentence given with blank to be filled in with an appropriate word. Select the correct alternative out of the four and indicate it by selecting the appropriate option.

Even if two horses may look _____, they may not be of the same age.

- A comparable
- B alike
- C on par
- D only same

Answer: B

Question 93

In the following question, a sentence has been given in Active/Passive voice. Out of four alternatives suggested, select the one which best expresses the same sentence in Passive/Active voice.

Do you intimidate your younger brothers?

- A Were your younger brothers being intimidated by you?
- B Are your younger brothers intimidated by you?
- C Have your younger brothers being intimidated by you?
- D Are your younger brothers being intimidated by you?

Answer: D

Question 94

In the following question, out of the four alternatives, select the alternative which best expresses the meaning of the idiom/phrase.

A blessing in disguise

- A A misfortune that eventually has good results
- B A person who has changed so much that he is now unrecognisable
- C A prayer asking for God's favour
- D A bad person hiding his face behind a mask

Answer: A

SSC CHSL Expected Cutt off

Question 95

Select the synonym of reassert

- A renounce
- B acknowledge
- C disbelief
- D conceal

Answer: B

Instructions

In the following passage some of the words have been left out. Read the passage carefully and select the correct answer for the given blank out of the four alternatives.

Once again, a _____ monsoon so vital to India's economic fortunes has left some states in shambles. From Assam to Karnataka, heavy rainfall in a _____ has created paralysing floods that have taken a _____, wiped out crops and destroyed hard-earned assets. When the waters _____, a familiar cycle of assessment of damage by Central teams, preparation of loss estimates and expensive _____ work such as repairs of river embankments, will follow.

a _____ monsoon so vital to India's economic fortunes

Question 96

a _____ monsoon so vital to India's economic fortunes

- A rapid
- B huge
- C thunder
- D vigorous

Answer: D

Question 97

heavy rainfall in a _____

- A short span of time
- B very quickly
- C short moments
- D fraction of a second

Answer: A

SSC CHSL Study Material

Question 98

floods that have taken a _____

- A many deaths

- B dangerous turn
- C heavy toll of life
- D big cost in terms of life

Answer: C

Question 99

When the waters _____,

- A rush back
- B recede
- C flow away
- D ebb

Answer: B

Question 100

expensive _____ work such as repairs of river embankments, will follow.

- A rejuvenation
- B reclamation
- C renovation
- D restoration

Answer: D

SSC CHSL Free App

SSC CHSL Free Mock Test

SSC CHSL Previous Papers (DOWNLOAD PDF)

SSC CGL MTS Previous Papers (DOWNLOAD PDF)

SSC CGL GD Constable Previous Papers (DOWNLOAD PDF)

SSC Stenographer Previous Papers (DOWNLOAD PDF)

SSC CGL Previous Papers (DOWNLOAD PDF)

SSC CGL Free Mock Test (Latest Pattern)

SSC Stenographer Previous Papers (Latest Pattern)

SSC GD Constable Free Mock Test (Latest Pattern)

SSC MTS Free Mock Test (Latest Pattern)

SSC CPO Free Mock Test (Latest Pattern)

25 SSC CHSL MOCKS 149

SSC CHSL Important Questions and Answers (Download PDF)

SSC CHSL Free Videos (Youtube)

SSC CHSL Syllabus

SSC CHSL Expected Cutt off

SSC CHSL Study Material

SSC CHSL Free App