



## RRB Group-D 28th Sep 2018-shift -2

All rights reserved. No part of this publication may be reproduced, distributed, or transmitted in any form or by any means, electronic, mechanical, photocopying, recording or otherwise, or stored in any retrieval system of any nature without the permission of cracku.in, application for which shall be made to [support@cracku.in](mailto:support@cracku.in)

## RRB Group-D 28th Sep 2018-shift -2

### Instructions

For the following questions answer them individually

### Question 1

$$\{20 - (25 - 33)\} \div \{-5 \times 4 - (-6)\} + 56 \div (-27 + 13) = ?$$

- A -4
- B -2
- C 4
- D -6

Answer: D

## RRB Group-D Previous Papers (download PDF)

### Question 2

Durga Puja is the main festival of .....

- A Kashmir
- B West Bengal
- C Kerala
- D Rajasthan

Answer: B

### Question 3

A statement is followed by two arguments. Decide which of the arguments is/are strong with respect to the statement.

**Statement:**

There should be strict penalty for people using mobile phone while driving.

**Arguments:**

- I. Yes, it will ensure that the number of accidents due to mobile phone usage gets avoided.
- II. No, it is difficult to implement as people are used to using cell phones anywhere.

- A Only argument I is strong.
- B Both I and II are strong.
- C Only argument II is strong.
- D Neither I nor II is strong.

Answer: A

### Question 4

Car is related to Tyre in the same way Chair is related to:

- A Back
- B Sit

C Rest

D Legs

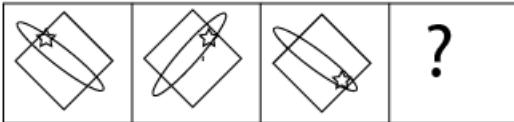
Answer: D

## 20 RRB Group-D Mocks - Just Rs. 149

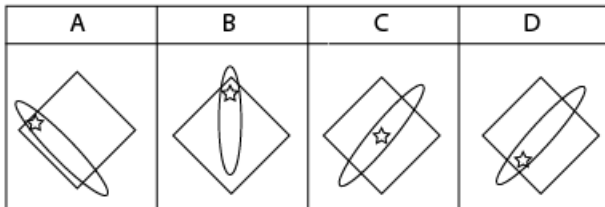
Question 5

Select the option figure that will complete the series of question figures.

Question figures:



Option Figures:



A A

B B

C C

D D

Answer: D

Question 6

Read the given statement and conclusions carefully and select which of the conclusions logically follow(s) from the statement.

Statement:

Mr. X says that he gets good thought in the morning.

Conclusions:

1. Thoughts come to Mr. X only in the morning.
2. Thoughts does not come to Mr. X in the evening.

A Only conclusion 2 follows

B Neither 1 nor 2 follows

C Either 1 or 2 follows

D Only conclusion 1 follows

Answer: B

Question 7

..... is an alkali metal.

- A Sodium
- B Manganese
- C Aluminium
- D Magnesium

Answer: A

## RRB Group-D Free Mock Tests

### Question 8

If  $\sqrt{45} + \sqrt{20} = 11.180$  find the value of  $\sqrt{180} + 4\sqrt{5}$ .

- A 22.360
- B 24.595
- C 20.124
- D 17.888

Answer: A

### Question 9

If an object with a mass of 25 kg is moving with a uniform acceleration of  $8 \text{ ms}^{-2}$ , then the force exerted by the body is .....

- A 200 N
- B 200 J
- C  $200 \text{ ms}^{-2}$
- D  $200 \text{ ms}^2$

Answer: A

### Question 10

The LCM of 60 and 54 is

- A  $6 \times 5 \times 9$
- B  $6 \times 10 \times 3$
- C  $6 \times 10 \times 9$
- D  $60 \times 54$

Answer: C

770 Mocks (Cracku Pass) - Just Rs. 199

Question 11

Based on the following table. what is the average number of screws manufactured in the unit over the given 6 months?

Months	No.of screws manufactured, in thousand
Jan	200
Feb	300
Mar	250
Apr	250
May	250
Jun	250

- A 200
- B 250
- C 300
- D 150

Answer: B

Question 12

Grey revolution is related to .....

- A leather
- B silk
- C fish
- D fertilizers

Answer: D

Question 13

Convert 0.6 into a fraction:

- A  $\frac{2}{3}$
- B  $\frac{4}{3}$
- C  $\frac{6}{3}$
- D  $\frac{2}{6}$

Answer: A

## Daily Free Online GK tests

### Question 14

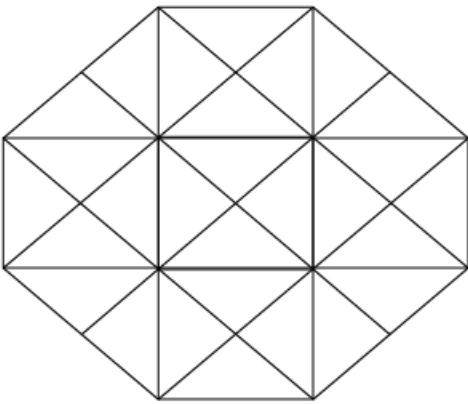
In ethane, each carbon atom is bonded to:

- A One atom
- B Three atoms
- C Five atoms
- D Four atoms

Answer: D

### Question 15

What is the minimum number of lines required to make the following figure?



- A 18
- B 13
- C 20
- D 16

Answer: A

### Question 16

The formula of lithium nitride is:

- A  $Li_2N$
- B  $LiN$
- C  $Li_3N_2$
- D  $Li_3N$

Answer: D

100+ Free Online GK Tests

**Question 17**

Kautilya's Arthashastra gives us information about the ..... administration.

- A Gupta
- B Rashtrakuta
- C Pratihara
- D Mauryan

**Answer: D**

**Question 18**

When two equal forces are acting on a body and opposite in direction, the net force acting on the body becomes .....

- A three-times
- B two-times
- C zero
- D four-times

**Answer: C**

**Question 19**

..... promote(s) cell division.

- A Absciscic acid
- B Cytokinins
- C Gibberellins
- D Auxin

**Answer: B**

**Daily Free RRB Online Test**

**Question 20**

Which of the following lies on the reflecting surface of the mirror?

- A Centre of curvature
- B Focus
- C Pole
- D Focal length

**Answer: C**

**Question 21**

White phosphorous is stored in:

- A Oxygen
- B Alcohol
- C Hydrogen
- D Water

Answer: D

**Question 22**

The mean of the 8 smallest numbers from a group is 17, while the mean of all the numbers of the group taken together is 20. If the mean of the numbers leaving the smallest eight out is 22, how many numbers were present in the group in all?

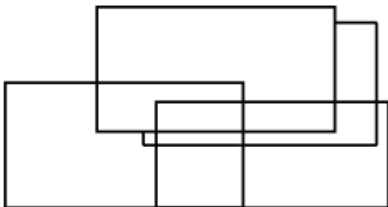
- A 22
- B 20
- C 18
- D 19

Answer: B

**RRB Free Videos (You Tube Channel)**

**Question 23**

How many rectangles are there in this figure?



- A 9
- B 14
- C 17
- D 16

Answer: E

**Question 24**

A jeweller made a piece of uniquely designed diamond necklace and the selling price was fixed at ₹ 10,00,000. In making this piece, on the raw material, the jeweller had invested ₹ 3,00,000 and had paid a labour charge of ₹ 2,00,000. If 20% of the raw material cost was of gold, what is the actual amount the jeweller had spent in procuring the gold?

- A ₹ 1,60,000
- B ₹ 1,08,000
- C ₹ 3,60,000



D ₹ 60,000

Answer: D

Question 25

Complete the number series by choosing the missing terms from the options.  
11, 20, 27, 36, 43, ?, ?, 68, 75

A 50, 61

B 52, 61

C 50, 59

D 52, 59

Answer: D

## RRB General Science Notes (Download Pdf)

Question 26

The sum of all interior angles of a polygon is  $1260^\circ$ . Find the number of sides of the polygon.

A 11

B 8

C 10

D 9

Answer: D

Question 27

As of August 2018, what is the portfolio held by the current Union Minister Smriti Irani?

A Information and Broadcasting

B Science and Technology

C Health and Family Welfare

D Women and Child Development

Answer: E

Question 28

A and B together can complete a task in 1.2 days. However, if A works alone, completes half the job and leaves and then B works alone and completes the rest of the work, it takes 2.5 days in all to complete the work. If B is more efficient than A, how many days would it have taken B to do the work by herself?

A 1.5

B 1.8

C 2.0

D 2.2

Answer: C

## RRB NTPC Previous Papers (Download PDF)

### Question 29

In a shopping mall, a handbag was sold for ₹ 2990 after giving a discount of 40%. If the marked price of the handbag was ₹ 4600, find the value of P?

- A 40
- B 45
- C 36
- D 72

Answer: E

### Question 30

In ..... cells are loosely packed so that large intercellular spaces are found.

- A Parenchyma
- B Tracheids
- C Sclerenchyma
- D Collenchyma

Answer: A

### Question 31

Name the director of the blockbuster movie 'Bahubali'.

- A Madhur Bhandarkar
- B Prabhu Deva
- C Karan Johar
- D S.S. Rajamouli

Answer: D

## RRB GK Material (Download Pdf)

### Question 32

Insert mathematical symbols in the place of ? to get the result.

$$((10?10)?25)?10 = 10$$

- A  $-, \times, \div$
- B  $\times, \times, +$
- C  $+, \div, \div$

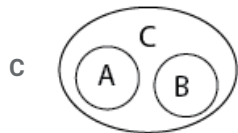
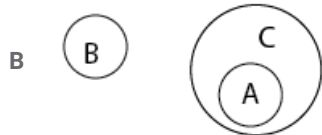
D -, ×, +

Answer: D

Question 33

Which of the following correctly represents the relationship between?

- A) Metal
- B) Glass
- C) Vessels



Answer: D

Question 34

Who was honoured with the prestigious 2018 Padma Bhushan award in the field of Sports-Billiards/Snooker?

- A Ashok Sandilya
- B Geet Sethi
- C Pankaj
- D Michael Ferreira

Answer: C

**Get Free Study Material & Updates - Whatsapp "Updates" to 7661025557**

Question 35

In an alloy of German silver, the ratio of copper to zinc was 21 : 16 while that of nickel to zinc was 7 : 24. What was the ratio of copper to zinc to nickel in the alloy?

- A 21 : 16 : 7
- B 17 : 21 : 4
- C 63 : 48 : 14
- D 68 : 28 : 21

Answer: C

**Question 36**

Rain swims in an 80 m long pool. He covers 160 m in one minute by swimming from one end to the other and back, along the same straight path. Find his average speed.

- A  $2.07 \text{ m s}^{-1}$
- B  $2.60 \text{ m s}^{-1}$
- C  $3.67 \text{ m s}^{-1}$
- D  $2.67 \text{ m s}^{-1}$

**Answer: D**

**Question 37**

The focal length of a lens is 50 centimetre. Its power is:

- A 50 dioptre
- B 1 dioptre
- C 10 dioptre
- D 2 dioptre

**Answer: D**

**Latest Job Updates on Telegram - Join here**

**Question 38**

The host city for the 8th annual Global Entrepreneurship Summit (GES-2017) was:

- A Mysore
- B Bengaluru
- C Chennai
- D Hyderabad

**Answer: D**

**Question 39**

The mass of the earth is .....

- A  $6 \times 10^{23} \text{ kg}$
- B  $6 \times 10^{24} \text{ kg}$
- C  $6 \times 10^{25} \text{ kg}$
- D  $6 \times 10^{22} \text{ kg}$

**Answer: B**

**Question 40**

In a code language, FLUTE is written as 62105. What is the code for HARMONICA?

- A 918354931
- B 818254931
- C 818354931
- D 818354932

**Answer: C**

**RRB Group-D Previous Papers (download PDF)**

**Question 41**

If a bicycle of mass 10 kg moves at a speed of 20 m/s, then the kinetic energy of the bicycle is:

- A 2000 J
- B 400 J
- C 4000 J
- D 200 J

**Answer: A**

**Question 42**

Variable valency is exhibited by .....

- A Valence elements
- B Transition element
- C Group elements
- D Alkaline elements

**Answer: B**

**Question 43**

According to the World Bank, what is India's position among the world economies based on the year 2017?

- A 7
- B 9
- C 6
- D 4

**Answer: C**

**20 RRB Group-D Mocks - Just Rs. 149**

**Question 44**

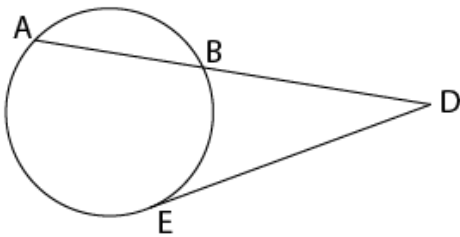
The Chief Minister of Goa as of March 2018, Manohar Panikar, belongs to:

- A Janata Dal Party
- B Indian National Congress
- C Bharatiya Janata Party
- D CPI

**Answer: C**

**Question 45**

In the circle below, chord  $AB$  is extended to meet the tangent  $DE$  at D. If  $AB = 24$  cm and  $DE = 9$  cm, what is the length of  $BD$  ?



- A  $4\sqrt{6}$  cm
- B 3 cm
- C 5 cm
- D 4 cm

**Answer: B**

**Question 46**

Vessels are the major water conducting cells in:

- A Fungi
- B Angiosperms
- C Bryophyta
- D Thallophyta

**Answer: B**

**RRB Group-D Free Mock Tests**

**Question 47**

If YELL is coded as 2551212, then what will be the code for LENT?

- A 1251421
- B 1251420

C 1251620

D 1351420

Answer: B

Question 48

Sarathi deposited ₹ 3,125 in a bank which promised 8% simple interest per annum. If Sarathi kept the money with the bank for 5 years, he will earn an interest of:

A ₹ 1,280

B ₹ 1,290

C ₹ 1,250

D ₹ 1,240

Answer: C

Question 49

Which of the following numbers is divisible by 12?

A 73508

B 63508

C 83508

D 93508

Answer: C

**770 Mocks (Cracku Pass) - Just Rs. 199**

Question 50

Who among the following was appointed as the UN Environment's Goodwill Ambassador for India in November 2017?

A Vidya Balan

B Dia Mirza

C Sonakshi Sinha

D Rekha

Answer: B

Question 51

..... is not the same as reproduction.

A Budding

B Fission

C Multiple fission

D Regeneration

Answer: D

Question 52

Who is the proponent and propagandist of the "Art of Living"?

- A Sri Sri Ravi Shankar
- B Swaminarayan
- C Sahajanand Swami
- D Pundit Ravi Shanker

Answer: A

Daily Free Online GK tests

Question 53

Where was the 48<sup>th</sup> International Film Festival of India held in 2017?

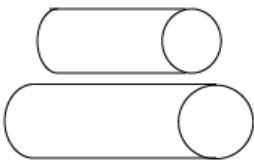
- A Delhi
- B Goa
- C Mumbai
- D Hyderabad

Answer: B

Question 54

Which of the following shapes are combined to form this shape?

Question Figure:



Option Figures:

A	B	C	D

- A D
- B B
- C C



D A

Answer: A

Question 55

Who among the following won a gold medal at the 2017 World Para Swimming Championship?

A Curtis Lovejoy

B Tucker Dupree

C Jessica Long

D Kanchanmala Pande

Answer: D

100+ Free Online GK Tests

Question 56

Pipe A can fill an empty cistern in 5 hours while Pipe B takes 6.25 hours to fill it. The two pipes are opened simultaneously when the cistern is empty, but Pipe B is turned off after some time as a result of which the cistern is filled in 3.4 hours. For how many hours was Pipe B open?

A 1.5

B 1

C 2

D 2.5

Answer: C

Question 57

A 112 ft tall Shiva statue (Adiyogi) was unveiled on 24<sup>th</sup> February 2017 in Tamil Nadu by:

A Ramvilas Paswan

B Ram Nath Kovind

C Rajnath Singh

D Narendra Modi

Answer: D

Question 58

The ..... in India are generally known as 'Tidal Forests'.

A desert forests

B mountain forests

C dry lands

D wetlands

Answer: D

## Daily Free RRB Online Test

### Question 59

The ratio of chairs to tables in an office is 9 : 7. If there are 42 more chairs than tables, find the number of chairs in the office.

- A 189
- B 215
- C 147
- D 200

Answer: A

### Question 60

A ball thrown up vertically returns to the ground after 12.5 seconds. Find the velocity with which it was thrown up. ( $g = 10 \text{ m s}^{-2}$ )

- A  $10 \text{ m s}^{-1}$
- B  $125 \text{ m s}^{-1}$
- C  $12.5 \text{ m s}^{-1}$
- D  $65 \text{ m s}^{-1}$

Answer: E

### Question 61

'Alum' is an example of

- A Flake salt
- B Table salt
- C Single salt
- D Double salt

Answer: D

## RRB Free Videos (You Tube Channel)

### Question 62

Sunny and Paula can complete a piece of work together in 12 hours. While Paula takes 18 hours to complete the work alone, another individual, Jane, takes 45 hours to complete the same piece of work alone. How many hours would it take Sunny and Jane to complete the same work together?

- A 18
- B 16
- C 15

D 20

Answer: D

**Question 63**

Who is the Director of the movie 'Padmaavat' released in 2018?

- A Raj kumar Hirani
- B Sanjay leela Bansali
- C Karan Johar
- D SS Rajamouli

Answer: B

**Question 64**

Who among the following is the Union Minister of Human Resource Development, Government of India, as of 1 March 2018?

- A Radha Mohan Singh
- B Prakash Javadekar
- C Harsha Vardhan
- D Smriti Irani

Answer: B

## RRB General Science Notes (Download Pdf)

**Question 65**

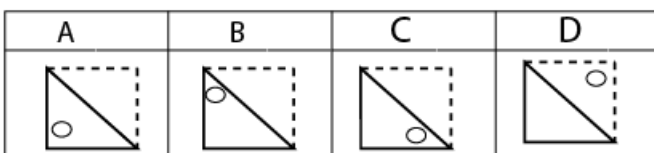
Name the Indian sports person who won gold in the Girls Under-12 category at the World Cadets Chess Championship. in 2017.

- A Padmini Rout
- B Deshmukh
- C Abhimanyu Puranik
- D Arya Chopra

Answer: B

**Question 66**

Which pattern will the given transparent sheet resemble when it is folded at the dotted line?



- A D
- B B
- C C
- D A

Answer: D

**Question 67**

Select the horizontal mirror image of LICK from option figures.

Option Figures:

LICK	ƆIƆK	ƆICK	ƆIP
A	B	C	D

- A C
- B A
- C B
- D D

Answer: A

**RRB NTPC Previous Papers (Download PDF)**

**Question 68**

The volume of a right circular cone, whose radius of the base is one-third of its altitude, and the volume of a hemisphere are equal. The ratio of the radii of the cone and the hemisphere is:

- A  $\sqrt[3]{3} : \sqrt[3]{2}$
- B 2 : 3
- C  $\sqrt[3]{2} : 1$
- D  $\sqrt[3]{2} : \sqrt[3]{3}$

Answer: D

**Question 69**

Consider the given statement(s) and decide which of the given assumption(s) is/are implicit in the statement.

Statement:

"Shortage in rainfall results in crop failure" said the meteorologist.

Assumptions:

- I. Rainfall is a must for crop success.
- II. Irrigation is much dependent on Rainfall.

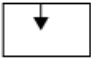



- A Neither I nor II is implicit.

- B Both I and II are implicit.
- C Only I is implicit.
- D Only II is implicit.

Answer: C

**Question 70**

Find the odd one out.

A	B	C	D
			

- A B
- B D
- C C
- D A

Answer: C

**RRB GK Material (Download Pdf)**

**Question 71**

Pipes A and B, when working together, can fill an empty tank in 24 hours. They work together for 8 hours and then B is stopped but A continued to work. It took a total of 28 hours to fill the tank. How long would it take A to fill the empty tank alone?

- A 30 hours
- B 29 hours
- C 28 hours
- D 31 hours

Answer: A

**Question 72**

Consider the given statement(s) and decide which of the given assumption(s) is/are implicit in the statement.

**Statement:**

Earlier there were many birds in the bird sanctuary.

**Assumptions:**

- I. Birds migrate and come to the sanctuary during a particular period of the year
- II. There were good water bodies in that area

- A Only II is implicit
- B Only I is implicit
- C Both I and II are implicit

D Neither I nor II is implicit

Answer: B

Question 73

Vandana is the daughter of Vishal and Vanita. Amit is the son of Vanita's brother. Who is Vandana to Amit?

A Brother

B Cousin

C Father

D Niece

Answer: B

**Get Free Study Material & Updates - Whatsapp "Updates" to 7661025557**

Question 74

Monika's father was 38 years of age when she was born while her mother was 36 years old when her sister four years younger to her was born. What is the difference between the ages of her parents?

A 8 years

B 4 years

C 6 years

D 2 years

Answer: C

Question 75

..... Theory of Evolution tells us how life evolved from simple to more complex forms.

A Darwins

B Wallace

C Mendel's

D Lamarck's

Answer: A

Question 76

A wooden crate 1.8 m long, 1.5 m wide and 1.2 m in height is filled with iron cubes that are 6 cm wide. Find the maximum number of iron cubes that can be fitted in the crate.

A 13,500

B 15,000

C 14,500

D 14,000

Answer: B

**Latest Job Updates on Telegram - Join here**

Question 77

What is the next term in the given series?

22C, 42F, 62I, .....

- A 82L
- B 82N
- C 82M
- D 82O

Answer: A

Question 78

A boy standing at the top of a 20-metre-high tower drops a stone. Assuming  $g = 10 \text{ m/s}^2$ , the velocity with which the stone hits the ground is:

- A 10 m/s
- B 20 m/s
- C 15 m/s
- D 25 m/s

Answer: B

Question 79

The Government of India has tied up with which of the following companies to support Skill India in the automobile industry?

- A Ashok Leyland
- B Tata Motors
- C Maruti Suzuki
- D Mahindra & Mahindra Ltd.

Answer: C

**RRB Group-D Previous Papers (download PDF)**

Question 80

Which of the following effects is not produced by current?

- A Chemical effect
- B Contraction effect
- C Heating effect

D Magnetic effect

Answer: B

Question 81

..... element has two orbits that are completely filled.

A He

B Ar

C Kr

D Ne

Answer: D

Question 82

Mark had to travel 220 km in 4.5 hours, using a train that travels at the speed of 60 km/h or a bus that travels at the speed of 40 km/h, or any combination of the two modes of transport. For how long did he travel by bus?

A 1 hour

B 1 hour 30 minutes

C 2 hours 30 minutes

D 2 hours

Answer: C

## 20 RRB Group-D Mocks - Just Rs. 149

Question 83

In the modern periodic table, periods ..... and ..... contain Lanthanoides and Actinoides.

A 3 and 4

B 6 and 7

C 4 and 5

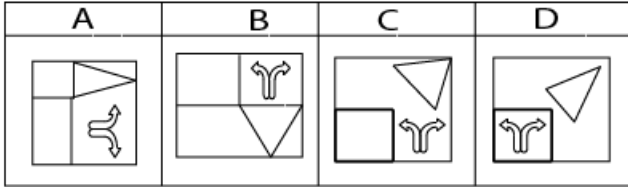
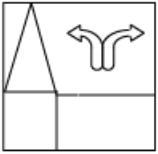
D 5 and 6

Answer: B



Question 84

Which pattern most closely resembles the following figure?



A B

B A

C D

D C

Answer: B

Question 85

Which of the following does not belong to this group?

- A. Circle
- B. Volume
- C. Square
- D. Rectangle

A C

B B

C D

D A

Answer: B

## RRB Group-D Free Mock Tests

Question 86

Meenu goes to the grocery shop just adjacent to her home on the right side. Her home's entrance faces East. After entering the shop she turns to her right to start walking towards an aisle that has fresh produce. Which direction is she walking?

A West

B North

C East

D South

Answer: B

Question 87

The square of a natural number (other than 1) is either a multiple of 3 or exceeds a multiple of 3 by: .....

- A 3
- B 2
- C 4
- D 1

Answer: D

Question 88

$$3 + [32 \div 8 \times 52 \div (4 + 9)] = ?$$

- A 19
- B 20
- C 21
- D 18

Answer: A

**770 Mocks (Cracku Pass) - Just Rs. 199**

Question 89

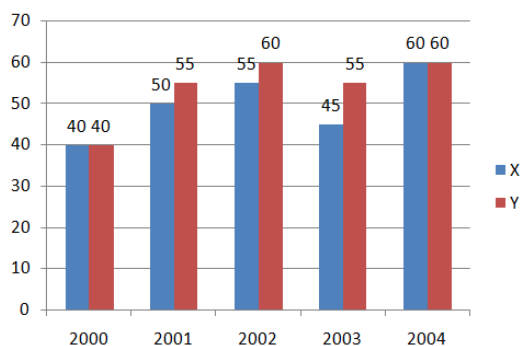
..... reaction occurs when sodium sulphate reacts with barium chloride.

- A Single combination
- B Single displacement
- C Double displacement
- D Double combination

Answer: C

Question 90

Below is the volume of production of sugar by company X and Y over 5 years.



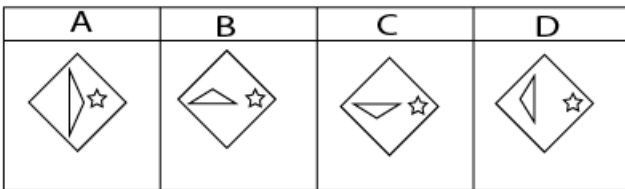
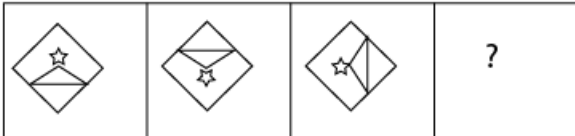
What is the difference in the total production of company X and Y together in years 2000 and 2004?

- A 20,000 tones
- B 20,00,000 tones
- C 40,00,000 tones
- D 40,000 tones

Answer: C

**Question 91**

Select the option that can replace the question mark (?) in the following series.



- A B
- B D
- C A
- D C

Answer: C

**Daily Free Online GK tests**

**Question 92**

The operating costs of a company are given below.

	2016	2017
Loan Interest	25%	25%
Salary	50%	55%
Tax	25%	20%

The total money spent on operations in 2016 is ₹ 120 lakhs and the total money spent in 2017 is ₹ 150 lakhs. By how much was the salary in 2017 higher than that of 2016?

- A ₹ 5 lakhs
- B ₹ 10 lakhs
- C ₹ 22.5 lakhs
- D ₹ 20 lakhs

Answer: C

**Question 93**

In a code language, VEIL is written as 2592. What is the code for MEET?

- A 4550
- B 3660
- C 3551
- D 3550

Answer: D

**Question 94**

Fatehpur Sikh or the 'City of Victory' was capital for 12 years.

- A Bahadur Shah's
- B Babur's
- C Akbar's
- D Aurangzeb's

Answer: C

## 100+ Free Online GK Tests

**Question 95**

..... is the metal used for making filaments of electric bulbs.

- A Iron
- B Tungsten
- C Silver
- D Nickel

Answer: B

**Question 96**

A aid can cycle at 16 km/h and walk at 7 km/h. To cover a distance of 109 km. she takes 8.5 hours. How much distance did she cover on foot?

- A 17.5 km
- B 24.5 km
- C 21 km
- D 28 km

Answer: C

Question 97

A statement is followed by two arguments. Decide which of the arguments is/are strong with respect to the statement.

Statement:

Every week schools should allow a free, full day of physical activity and games.

Arguments:

I. Yes, giving them freedom will help them to interact with others and explore new avenues

II. No, there wouldn't be discipline

- A Neither I nor II is strong
- B Only argument II is strong
- C Only argument I is strong
- D Both I and II are strong.

Answer: C

## Daily Free RRB Online Test

Question 98

$$144 \div [40 - \{37 - (25 - 112 \div 7 \times 4)\}] = ?$$

- A 4
- B 2
- C 8
- D 6

Answer: D

Question 99

The mean of three numbers is 20. The range of this data set is 12 while the difference between the two smallest numbers is 3. The greatest of the three natural numbers is:

- A 27
- B 28
- C 24
- D 25

Answer: A

Question 100

If '+' indicates mathematical action '-' and '×' indicates mathematical action '÷' then what is the value of

$$((75 + 25) \times 5) \times 10?$$

- A 1
- B 0
- C 3

D -1

Answer: A

**RRB Free Videos (You Tube Channel)**

**RRB Group-D Previous Papers (download PDF)**

**20 RRB Group-D Mocks - Just Rs. 149**

**RRB Group-D Free Mock Tests**

**770 Mocks (Cracku Pass) - Just Rs. 199**

**Daily Free Online GK tests**

**100+ Free Online GK Tests**

**Daily Free RRB Online Test**

**RRB Free Videos (You Tube Channel)**

**RRB General Science Notes (Download Pdf)**

**RRB NTPC Previous Papers (Download PDF)**

**RRB GK Material (Download Pdf)**

**Get Free Study Material & Updates - Whatsapp "Updates" to 7661025557**

**Latest Job Updates on Telegram - Join here**