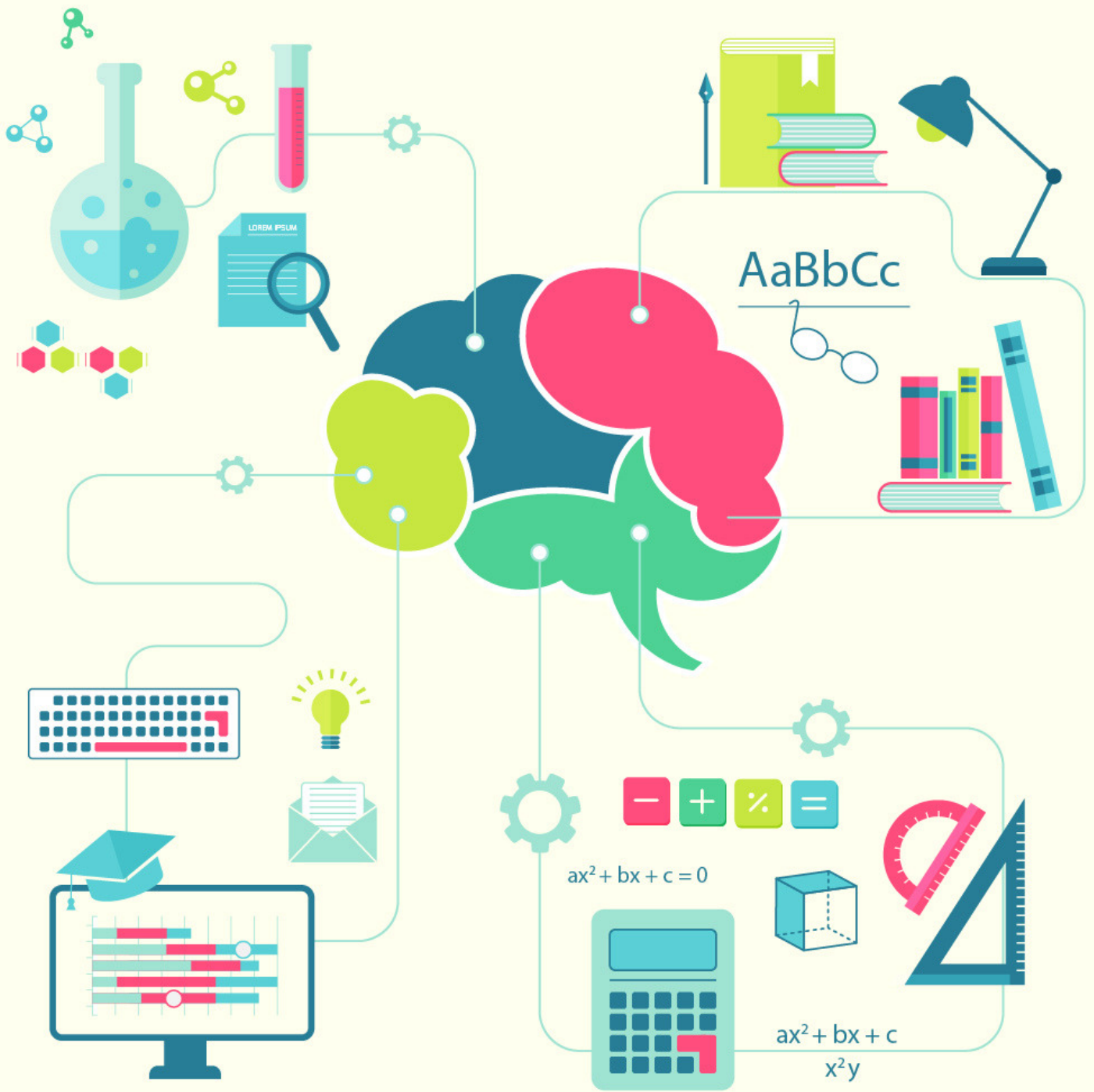


cracku 

Analogy Questions for SSC CGL PDF

04 April 2018





TAKE CRACKU'S FREE SSC CGL MOCK

Question 1:

The least number which when divided by 6, 9, 12, 15 and 18 leaves the same remainder 2 in each case is :

- a) 180
- b) 182
- c) 178
- d) 176

Question 2:

What is the arithmetic mean of first 20 odd natural numbers ?

- a) 19
- b) 17
- c) 22
- d) 20

Question 3:

The least number that should be added to 2055, so that the sum is exactly divisible by 27 is

- a) 28
- b) 24
- c) 27
- d) 31

SSC CGL Syllabus 2018 PDF

SSC CGL Free Previous Papers
Download Our App





FREE PAST SSC CGL PAPERS

Question 4:

The digit in the unit place in the square root of 66049 is

- a) 3
- b) 7
- c) 8
- d) 2

Top 10 SSC CGL Maths Tricks and Shortcuts

Question 5:

A certain sum will amount to 12,100 in 2 years at 10% per annum of compound interest, interest being compounded annually. The sum is

- a) 8000
- b) 6000
- c) 12000
- d) 10000

Solutions: 1 to 5

1) Answer (b)

The numbers 6,9,12,15,18 leaves same remainder 2 in each case.

So, what we need to do is find the L.C.M. of these numbers and add 2 to it

L.C.M. of 6,9,12,15,18 = 180

=>Required no. = $180+2 = 182$

SSC CGL English Questions PDF

SSC CGL Free Previous Papers
Download Our App





TAKE CRACKU'S FREE SSC CGL MOCK

2) Answer (d)

NOTE :- Sum of first 'n' odd natural numbers = n^2

Sum of first 'n' even natural numbers = $n(n+1)$

Sum of first 20 odd natural numbers = $20^2 = 400$

Arithmetic mean = $400/20 = 20$

3) Answer (b)

The remainder obtained by dividing 2055 by 27 = 3

So, the least number that should be 'subtracted' from 2055 to make it perfectly divisible by 27 = 3

and the least number that should be added = $27-3 = 24$

4) Answer (b)

Number System for SSC CGL

Square root of 66049 = 257

Thus, unit's digit = 7

5) Answer (d)

A certain sum will amount to 12,100 in 2 years at 10% per annum of compound interest, interest being compounded annually. The sum is

20 SSC CGL Mocks for Rs. 99

SSC CGL Free Previous Papers
Download Our App





TAKE CRACKU'S FREE SSC CGL MOCK

Solutions 1 to 10

1) Answer (b)

Milk is obtained from Cow while Honey is obtained from Honey Bee

2) Answer (b)

$A + 6 = G, C + 6 = I, F + 6 = L$

ACF - GIL

Hence, $O + 6 = U, Q + 6 = W, T + 6 = Z$

OQT - UWZ

3) Answer (a)

Square root of 64 is 8 $64 = 8$

therefore Square root of 0.01 is 0.1 $0.01 = 0.1$

4) Answer (d)

The element used in a pencil to write is lead, similarly, an ink is used in a pen.

=> Ans - (D)

5) Answer (a)

It follows the sequence 'n+6'

$D+6 = J; G+6 = M; I+6 = O;$

Following the same sequence,

$R+6 = X; U+6 = A; W+6 = C;$

Hence Option A is correct

6) Answer (a)

It follows the sequence 'n*2'

$236*2 = 472;$

Therefore, $123*2 = 246;$

7) Answer (a)

This is under the category of Animal and Young ones.

Calf is the young one of Cow and Chick is the Young one of Hen.

SSC CGL Free Previous Papers
Download Our App





TAKE CRACKU'S FREE SSC CGL MOCK

8) Answer (b)

DHL is coded as AEI. It followed the sequence-'n-3'

$D-3 = A$; $H-3 = E$; $L-3 = I$;

Hence for QUY the code is NRV

$Q-3 = N$; $U-3 = R$; $Y-3 = V$

Hence Option B is correct.

9) Answer (c)

Inverse of 0.5 is 2 and Inverse of 0.125 is 8.

Hence option C is correct

10) Answer (a)

SSC CGL Free Previous Papers

Download Our App

