



SSC CHSL 3 Feb 2017 Evening Shift

All rights reserved. No part of this publication may be reproduced, distributed, or transmitted in any form or by any means, electronic, mechanical, photocopying, recording or otherwise, or stored in any retrieval system of any nature without the permission of cracku.in, application for which shall be made to support@cracku.in

Reasoning

Instructions

For the following questions answer them individually

Question 1

Choose the related word/letters/number from the given alternatives.

Tamil Nadu : Chennai : : Manipur : ?

- A Imphal
- B Aizwal
- C Itanagar
- D Dispur

Answer: A

Explanation:

Chennai is the capital of Tamil Nadu, similarly capital of Manipur is *Imphal*.

=> Ans - (A)

SSC CHSL Free Mock Test

Question 2

Choose the related word/letters/number from the given alternatives.

CD : 916 : : ? : 100144

- A HG
- B MO
- C RS
- D JL

Answer: D

Explanation:

Expression = CD : 916 : : ? : 100144

The pattern followed is that squares of numerical values of the alphabets are concatenated.

$C = 3, D = 4 \equiv (3^2, 4^2) = 916$

Similarly, $\sqrt{100, 144} = (10, 12) \equiv JL$

=> Ans - (D)

Question 3

Choose the related word/letters/number from the given alternatives.

RARE : ERAR :: ROCKET : ?

A TKEROC

B TEKRCO

C TEKROC

D TEKCOR

Answer: D

Explanation:

Expression = RARE : ERAR :: ROCKET : ?

The pattern followed is that the word is written in *reverse* order, i.e. first letter at last position, second at second last and so on.

Similarly, reverse of ROCKET : **TEKCOR**

=> Ans - (D)

Question 4

Choose the related word/letters/number from the given alternatives.

19 : 6859 :: 21 : ?

A 9291

B 9281

C 9261

D 9200

Answer: C

Explanation:

Expression = 19 : 6859 :: 21 : ?

The pattern followed is = $a : a^3$

Eg :- $19^3 = 6859$

Similarly, $(21)^3 = 9261$

=> Ans - (C)

SSC CHSL Previous Papers (DOWNLOAD PDF)

Question 5

Choose the odd word/letters/number/number pair from the given alternatives.

- A Jawaharlal Nehru
- B Manmohan Singh
- C Lal Bahadur Shastri
- D Rajendra Prasad

Answer: D

Explanation:

Except Rajendra Prasad others were former prime ministers of India, hence Rajendra Prasad is the odd one out.

=> Ans - (D)

Question 6

Choose the odd word/letters/number/number pair from the given alternatives.

- A ABC
- B MNO
- C DEF
- D QRT

Answer: D

Explanation:

(A) : A (+1 letter) = B (+1 letter) = C

(B) : M (+1 letter) = N (+1 letter) = O

(C) : D (+1 letter) = E (+1 letter) = F

(D) : Q (+1 letter) = R (+2 letters) = T

=> Ans - (D)

Question 7

Choose the odd word/letters/number/number pair from the given alternatives.

- A 6260
- B 8411
- C 9413
- D 5612

Answer: C

Explanation:

Apart from 9413, sum of digits of other numbers is 14, hence 9413 is the odd one out.

=> Ans - (C)

SSC CGL MTS Previous Papers (DOWNLOAD PDF)

Question 8

Choose the odd word/letters/number/number pair from the given alternatives.

- A 926
- B 122
- C 225
- D 491

Answer: C

Explanation:

$225 = (15)^2$, all other numbers are not perfect Square numbers, hence 225 is the odd one out.

=> Ans - (C)

Question 9

A series is given with one term missing. Choose the correct alternative from the given ones that will complete the series.

Boxing, Tennis Doubles, Volleyball, ?

- A Cricket
- B Chess
- C Basket Ball
- D Badminton

Answer: A

Explanation:

Number of players in increasing order in each of the sports.

= Boxing -> Tennis Doubles -> Volleyball -> Cricket

=> Ans - (A)

Question 10

A series is given with one term missing. Choose the correct alternative from the given ones that will complete the series.

BD, HJ, NP, ?

A TU

B TV

C ST

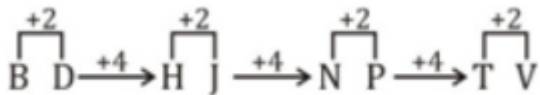
D SU

Answer: B

Explanation:

Expression : BD, HJ, NP, ?

The pattern followed is :



Thus, missing term = TV

=> Ans - (B)

SSC CGL GD Constable Previous Papers (DOWNLOAD PDF)

Question 11

A series is given with one term missing. Choose the correct alternative from the given ones that will complete the series.

AB, GH, MN, ST, ?

A UT

B XY

C ZY

D YZ

Answer: D

Explanation:

Expression : AB, GH, MN, ST, ?

The pattern followed is :

$$\begin{array}{ccccccccc} & +1 & & +1 & & +1 & & +1 & & +1 \\ \frown & & \frown & & \frown & & \frown & & \frown \\ A & B & \xrightarrow{+5} & G & H & \xrightarrow{+5} & M & N & \xrightarrow{+5} & S & T & \xrightarrow{+5} & Y & Z \\ \smile & & \smile & & \smile & & \smile & & \smile & & \smile & & \smile \end{array}$$

Thus, missing term = YZ

=> Ans - (D)

Question 12

A series is given with one term missing. Choose the correct alternative from the given ones that will complete the series.

12, 60, 240, 720, ?

A 1440

B 1420

C 1400

D 1480

Answer: A

Explanation:

The pattern followed is :

$$\begin{array}{ccccccccc} 12 & 60 & 240 & 720 & 1440 \\ | & | & | & | & | \\ \hline & \times 5 & \times 4 & \times 3 & \times 2 \end{array}$$

Thus, missing number = 1440

=> Ans - (A)

Question 13

In the following question, two statements are given each followed by two conclusions I and II. You have to consider the statements to be true even if they seem to be at variance from commonly known facts. You have to decide which of the given conclusions, if any, follows from the given statements.

Statement:

- (I) If we are lucky then things automatically fall in place.
- (II) Luck follows only when we work hard.

Conclusions:

- (I) Hard work is the key to success.
- (II) If you don't work hard, luck will not follow you.

- A Only conclusion II follows
- B Conclusion I and II both follow
- C Neither I nor II follow
- D Only conclusion I follows

Answer: B

SSC Stenographer Previous Papers (DOWNLOAD PDF)

Question 14

P, Q, R, S and T are standing in a line. P is taller than S but shorter than Q. T is shorter than S but taller than R. Who is the second tallest of them all?

- A T
- B S
- C R
- D P

Answer: D

Explanation:

P is taller than S but shorter than Q, $\Rightarrow Q > P > S$.

T is shorter than S but taller than R, $\Rightarrow S > T > R$.

Combining above statements, we get : $Q > P > S > T > R$

\therefore P is the second tallest of them all.

\Rightarrow Ans - (D)

Question 15

Arrange the given words in the sequence in which they occur in the dictionary.

- i. Foresay
- ii. Foreseize
- iii. Foreseeable
- iv. Foresail

A i, iii, iv, ii

B i, iii, ii, iv

C iii, i, ii, iv

D iv, i, iii, ii

Answer: D

Explanation:

As per the order of dictionary :

= Foresail -> Foresay -> Foreseeable -> Foreseize

≡ iv, i, iii, ii

=> Ans - (D)

Question 16

In a certain code language, "CAUGHT" is written as "125679" and "HEN" is written as "740". How is "TAUGHT" written in that code language?

A 952679

B 925697

C 925679

D 952697

Answer: C

Explanation:

The codes for each letter is given :

T -> 9

A -> 2

U -> 5

G -> 6

H -> 7

T -> 9

Thus, TAUGHT : **925679**

=> Ans - (C)

SSC CGL Previous Papers (DOWNLOAD PDF)

Question 17

Find the missing number in Following table

49	169	196
17	28	?
100	25	144

A 27

B 28

C 26

D 25

Answer: C

Explanation:

In each column, the sum of square root of first and third number is equal to the middle number.

$$\text{Eg: } \sqrt{49} + \sqrt{100} = 7 + 10 = 17$$

$$\text{and } \sqrt{169} + \sqrt{25} = 13 + 5 = 18$$

$$\text{Similarly, } \sqrt{196} + \sqrt{144} = 14 + 12 = 26$$

Thus, missing term = 26

=> Ans - (C)

Question 18

If "+" means "minus", "x" means "divided by", "÷" means "plus" and "-" means "multiplied by", then

$$108 \times 12 + 3 - 6 \div 4 = ?$$

A -10

B -1

C -7

D -5

Answer: D

Explanation:

$$\text{Expression: } 108 \times 12 + 3 - 6 \div 4 = ?$$

$$\equiv 108 \div 12 - 3 \times 6 + 4$$

$$= (9) + (-18) + 4$$

$$= 13 - 18 = -5$$

=> Ans - (D)

Question 19

In the following question, which one set of letters when sequentially placed at the gaps in the given letter series shall complete it?

d_c_d_cb_c_b

A cbccd

B cbc dc

C cbbdc

D cbdbc

Answer: B

Explanation:

The pattern followed is that in groups of 4, the term 'dccb' is repeated.

= dccb dccb dccb

=> Ans - (B)

SSC CGL Free Mock Test (Latest Pattern)

Question 20

Raj is facing north. He cycles for 8 km, then turns towards the south-east direction to move 10 km and from there, he moves 6 km towards the west. In which direction/place is he from his original position?

A North

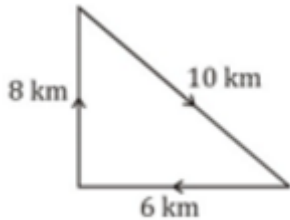
B East

C West

D At the original position

Answer: D

Explanation:



Raj is facing north. He cycles for 8 km, then turns towards the south-east direction to move 10 km and finally, he turned left and moves 6 km towards the west.

$$\therefore (6)^2 + (8)^2 = (10)^2$$

Thus, he is at his original position.

=> Ans - (D)

Question 21

A word is represented by only one set of numbers as given in any one of the alternatives. The sets of numbers given in the alternatives are represented by two classes of alphabets as shown in the given two matrices. The columns and rows of Matrix-I are numbered from 0 to 4 and that of Matrix-II are numbered from 5 to 9. A letter from these matrices can be represented first by its row and next by its column, for example, 'G' can be represented by 65, 56 etc. and 'R' can be represented by 67, 58 etc. Similarly, you have to identify the set for the word 'GIRL'.

MATRIX 1:

	0	1	2	3	4
0	S	T	G	D	B
1	A	G	O	F	A
2	G	T	P	I	N
3	D	G	I	S	M
4	G	I	Q	W	I

MATRIX 2:

	5	6	7	8	9
5	F	G	M	R	C
6	G	N	R	K	L
7	A	R	Y	J	F
8	R	B	W	G	Y
9	S	V	L	H	T

- A 40,32,76,98
- B 40,32,67,99
- C 40,22,76,97
- D 40,32,76,97

Answer: D

Explanation:

(A) : 40,32,76,98 = GIRJ

(B) : 40,32,67,99 = GIRT

(C) : 40,22,76,97 = GPRL

(D) : 40,32,76,97 = **GIRL**

=> Ans - (D)

Question 22

Introducing a boy, Amar says, "He is the son of the only daughter of my maternal grandmother." How is the boy related to Amar?

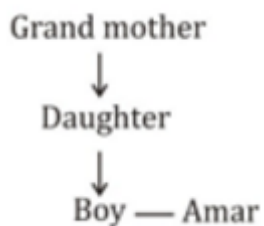
- A Cousin
- B Brother
- C Father-in-law
- D Nephew

Answer: B

Explanation:

Only daughter of Amar's maternal grandmother = Amar's mother

Relation is :



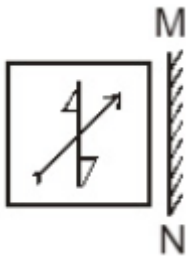
Thus, Amar and the boy are brothers.

=> Ans - (B)

SSC Stenographer Previous Papers (Latest Pattern)

Question 23

If a mirror is placed on the line MN, then which of the answer figures is the right image of the given figure?



Answer: C

Explanation:

A vertical mirror is placed, so the object on the left will appear right in reverse position and vice-versa.

So the arrow in the middle pointing top right will be reversed and will face top left, thus the second and fourth options will be eliminated.

Also, in the question figure, the triangles at bottom and top will change their position, hence third option is the right image.

=> Ans - (C)

Question 24

Identify the diagram that best represents the relationship among the given classes.

Singer, Dancer, Poet



- B 
- C 
- D 

Answer: B

Explanation:

A singer can be a dancer or a poet, likewise a dancer can be a singer or a poet and vice-versa. Thus, all three will intersect each other.

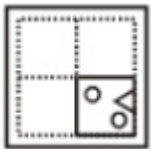
Thus, the venn diagram that best describes above relationship is :



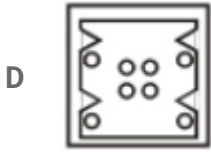
=> Ans - (B)

Question 25

A piece of paper is folded and punched as shown below in the question figures. From the given answer figures, indicate how it will appear when opened.



- A 
- B 
- C 



Answer: B

SSC GD Constable Free Mock Test (Latest Pattern)

General Awareness

Instructions

For the following questions answer them individually

Question 26

The Red Fort (Delhi) was built by _____.

- A Babur
- B British
- C Shah Jahan
- D Aurangzeb

Answer: C

SSC MTS Free Mock Test (Latest Pattern)

Question 27

Which drug is used as a Nonsteroidal anti-inflammatory drug?

- A Risedronate
- B Diazepam
- C Folic Acid
- D Ibuprofen

Answer: D

Question 28

Punica granatum is the scientific name of _____ .

- A Custard Apple
- B Gulmohar
- C Silver Oak
- D Pomegranate

Answer: D

Question 29

Between a tiger and an monkey, which of the following is different?

- A Kingdom
- B phylum
- C order
- D class

Answer: C

SSC CPO Free Mock Test (Latest Pattern)

Question 30

The modern periodic table consists of 18 groups and 7 periods. What is the atomic number of the element placed in the 1st group and the 4th period?

- A 21
- B 17
- C 19
- D 9

Answer: C

Question 31

Atomic number of which of the following elements is greater than that of Iodine

- A Silver

- B Bromine
- C Platinum
- D Zinc

Answer: C

Question 32

Konkani is the official language of _____.

- A Andhra Pradesh
- B Arunachal Pradesh
- C West Bengal
- D Goa

Answer: D

25 SSC CHSL MOCKS 149

Question 33

In 2015, the nominal rate of interest in a country was 5.5% and the inflation rate then was 2.5%. So real rate of interest in 2015 was _____.

- A 8 percent
- B 2.2 percent
- C 3 percent
- D 13.75 percent

Answer: C

Question 34

For each perfectly competitive firm in the long run

- A price = marginal costs = average variable costs
- B price = average profit

C price = marginal costs = minimum average total costs

D price = minimum average variable costs

Answer: C

Question 35

Ilmenite is an ore/mineral of _____.

A Titanium

B Copper

C Lead

D Manganese

Answer: A

SSC CHSL Important Questions and Answers (Download PDF)

Question 36

Which dam is built on the Bhagirathi River?

A Sardar Sarovar

B Srisaillam

C Koyna

D Tehri

Answer: D

Question 37

Which of these is India's National Anthem?

A Ae Mere Pyare Watan

B Maa Tujhe Salaam

C Aisa Desh Hai Mera

D Jana Gana Mana

Answer: D

Question 38

Itanagar is the Capital City of _____.

- A** Uttarakhand
- B** Uttar Pradesh
- C** Tripura
- D** Arunachal Pradesh

Answer: D

SSC CHSL Free Videos (Youtube)

Question 39

Panaji is the Capital City of _____.

- A** Himachal Pradesh
- B** Goa
- C** Gujarat
- D** Madhya Pradesh

Answer: B

Question 40

Gandhi ji studied Law in _____.

- A** India
- B** United Kingdom
- C** South Africa
- D** Bhutan

Answer: B

Question 41

Whom did Akbar defeat in the 2nd battle of Panipat in 1556?

- A Genghis Khan
- B Nader Shah
- C Hemu Vikramaditya
- D Bajirao I

Answer: C

SSC CHSL Syllabus

Question 42

The artificial heart was invented by _____.

- A Muhammad Yunus
- B Linus Yale, Jr.
- C Gazi Yasargil
- D Paul Winchell

Answer: D

Question 43

What does the slope of a velocity time graph represent?

- A Acceleration
- B Distance
- C Speed
- D Momentum

Answer: A

Question 44

What is the unit of the physical quantity "Jerk"?

- A meter second
- B meter per second cube

C meter per second square

D meter per second

Answer: B

SSC CHSL Expected Cutt off

Question 45

Which of the following is not considered a Democracy?

A USA

B Norway

C India

D China

Answer: D

Question 46

Speaker of the Lok Sabha serves for a maximum term of _____ years.

A 3

B 4

C 5

D 7

Answer: C

Question 47

Which Cricketer has scored highest number of runs in T20 Internationals?

A David Warner

B Virat Kohli

C Brendon McCullum

D Chris Gayle

Answer: C

SSC CHSL Study Material

Question 48

Who is the author of "The English Teacher"?

- A Aparna Sinha
- B Bapsi Sidhwa
- C R. K. Narayan
- D Indu Sundaresan

Answer: C

Question 49

Highest Civilian Honour received by Sania Mirza is _____.

- A Padma Shri
- B Padma Bhushan
- C Padma Vibhushan
- D Bharat Ratna

Answer: B

Question 50

_____ is a telecommunications network or computer network that extends over a large geographical distance.

- A Uniform Resource Locator
- B Simple Mail Transfer Protocol
- C Wide Area Network
- D JavaScript

Answer: C

Mathematics

Instructions

For the following questions answer them individually

Question 51

Two cars travel from city A to city B at a speed of 30 and 48 km/hr respectively. If one car takes 3 hours lesser time than the other car for the journey, then the distance between City A and City B is

- A 288 km
- B 240 km
- C 360 km
- D 192 km

Answer: B

Explanation:

Let the distance between City A and City B = d km

Speed of first car = 30 km/hr and speed of second car = 48 km/hr

Let time taken by first car = t hrs and time taken by second car = $(t - 3)$ hrs

Using, speed = distance/time for first car :

$$\Rightarrow \frac{d}{t} = 30$$

$$\Rightarrow d = 30t \text{ -----(i)}$$

For second car, $\Rightarrow \frac{d}{t-3} = 48$

Substituting value of d from equation (i), we get :

$$\Rightarrow 30t = 48t - 144$$

$$\Rightarrow 48t - 30t = 144$$

$$\Rightarrow t = \frac{144}{18} = 8 \text{ hrs}$$

From equation (i), $\Rightarrow d = 30 \times 8 = 240 \text{ km}$

\Rightarrow Ans - (B)

Question 52

Simple interest on a certain sum of money for 3 years at 10% per annum is half the compound interest on Rs 6000 for 2 years at 10% per annum. The sum placed on simple interest is

- A Rs 4200
- B Rs 2100
- C Rs 1050
- D Rs 1680

Answer: B

Explanation:

Sum for compound interest = Rs. 6000

Rate of interest = 10% and time period = 2 years

$$\text{Compound interest} = P\left[\left(1 + \frac{R}{100}\right)^T - 1\right]$$

$$= 6000\left[\left(1 + \frac{10}{100}\right)^2 - 1\right]$$

$$= 6000\left[\left(\frac{11}{10}\right)^2 - 1\right] = 6000\left(\frac{121-100}{100}\right)$$

$$= 60 \times 21 = \text{Rs. } 1260$$

$$\Rightarrow \text{Simple interest} = \frac{1260}{2} = \text{Rs. } 630$$

Let sum under simple interest = Rs. x

Rate of interest = 10% and time period = 3 years

$$\text{Simple interest} = \frac{P \times R \times T}{100}$$

$$= \frac{x \times 10 \times 3}{100} = 630$$

$$\Rightarrow x = \frac{630 \times 10}{3} = 210 \times 10 = \text{Rs. } 2100$$

\Rightarrow Ans - (B)

Question 53

If 3 dupatta is offered free on purchase of 6 dupattas priced Rs 1200 each what is the effective discount on each dupatta?

- A 25 percent
- B 20 percent
- C 12.5 percent
- D 33.33 percent

Answer: D

Explanation:

Cost price of 1 dupatta = Rs. 1200

Cost price of 9 shirts = $9 \times 1200 = \text{Rs.}10,800$

If 3 dupattas are offered free on purchase of 6 dupattas, \Rightarrow Cost of 6 dupattas = $6 \times 1200 = \text{Rs.}7,200$

\Rightarrow Effective discount = $\frac{10800-7200}{10800} \times 100$

$= \frac{3600}{108} = 33.33\%$

\Rightarrow Ans - (D)

Question 54

HCF and LCM of two numbers are 11 and 825 respectively. If one number is 275 find the other number.

A 53

B 45

C 33

D 43

Answer: C

Explanation:

Let the number = x

HCF = 11 and LCM = 825

Product of HCF and LCM = Product of the two numbers

$\Rightarrow x \times 275 = 11 \times 825$

$\Rightarrow x = \frac{11 \times 825}{275}$

$\Rightarrow x = \frac{825}{25} = 33$

\Rightarrow Ans - (C)

SSC CHSL Previous Papers (DOWNLOAD PDF)

Question 55

If $\cos 60^\circ - \sec 30^\circ = x$, then the value of x is

A 1

B $(\sqrt{3}+\sqrt{2})/2$

C $(\sqrt{3}-4)/2\sqrt{3}$

D $1/\sqrt{2}$

Answer: C

Explanation:

Expression : $\cos 60^\circ - \sec 30^\circ = x$

$$= \frac{1}{2} - \frac{2}{\sqrt{3}}$$

$$= \frac{\sqrt{3}-4}{2\sqrt{3}}$$

=> Ans - (C)

Question 56

If $(1 - \cos A)/2 = x$, then the value of x is

A $\cos^2(A/2)$

B $\sqrt{\sin(\frac{A}{2})}$

C $\sqrt{\cos(\frac{A}{2})}$

D $\sin^2(A/2)$

Answer: D

Explanation:

Using double angle formula, we know that $\cos(2\theta) = \cos^2\theta - \sin^2\theta$

$$\Rightarrow \cos(2\theta) = (1 - \sin^2\theta) - \sin^2\theta$$

$$\Rightarrow \cos(2\theta) = 1 - 2\sin^2\theta$$

Replacing θ by $\frac{A}{2}$, we get :

$$\Rightarrow \cos A = 1 - 2\sin^2\left(\frac{A}{2}\right)$$

$$\Rightarrow 2\sin^2\left(\frac{A}{2}\right) = 1 - \cos A$$

$$\Rightarrow \sin^2\left(\frac{A}{2}\right) = \frac{(1-\cos A)}{2}$$

=> Ans - (D)

Question 57

If Gaganjyot's salary is 7/6 times of Hafiz's and Sayed's is 8/7 times of Hafiz's, what is the ratio of Gaganjyot's salary to Sayed's.

A 49:48

- B 3:4
- C 4:3
- D 48:49

Answer: A

Explanation:

Let Hafiz's salary = $42x$

$$\Rightarrow \text{Gaganjyot's salary} = \frac{7}{6} \times 42x = 49x$$

$$\Rightarrow \text{Sayed's salary} = \frac{8}{7} \times 42x = 48x$$

$$\therefore \text{Ratio of Gaganjyot's salary to Sayed's} = \frac{49x}{48x}$$

$$= 49 : 48$$

\Rightarrow Ans - (A)

SSC CGL MTS Previous Papers (DOWNLOAD PDF)

Question 58

A shopkeeper by selling 20 Timex watches, earns a profit equal to the selling price of 4 Timex watches. His profit percentage is

- A 20 percent
- B 25 percent
- C 40 percent
- D 15 percent

Answer: B

Explanation:

Let cost price of a watch = $Rs.x$

Selling price of a watch = $Rs.y$

$$\Rightarrow \text{Selling price of 4 watches} = Rs.4y$$

$$\text{According to ques, } \Rightarrow 20(y - x) = 4y$$

$$\Rightarrow 20y - 20x = 4y$$

$$\Rightarrow 16y = 20x$$

$$\Rightarrow \frac{x}{y} = \frac{16}{20} = \frac{4}{5}$$

Let Cost price, $x = 4$ and selling price, $y = 5$

$$\therefore \text{Profit \%} = \frac{y-x}{x} \times 100$$

$$= \frac{5-4}{4} \times 100$$

$$= \frac{100}{4} = 25\%$$

=> Ans - (B)

Question 59

If $\operatorname{cosec}A - \cot A = x$, then the value of x is

A $\sin A / (1 - \cos A)$

B $\sqrt{[\sin A / (1 + \cos A)]}$

C $\sin A / (1 + \cos A)$

D $\sqrt{[\sin A / (1 - \cos A)]}$

Answer: C

Explanation:

Expression : $\operatorname{cosec}A - \cot A = x$

$$= \frac{1}{\sin A} - \frac{\cos A}{\sin A} = \frac{1 - \cos A}{\sin A}$$

Multiplying both numerator and denominator by $(1 + \cos A)$

$$= \frac{1 - \cos A}{\sin A} \times \frac{(1 + \cos A)}{(1 + \cos A)}$$

$$= \frac{1 - \cos^2 A}{\sin A (1 + \cos A)} = \frac{\sin^2 A}{\sin A (1 + \cos A)}$$

$$= \frac{\sin A}{1 + \cos A}$$

=> Ans - (C)

Question 60

If a cone of radius 10.5 cm and height 12 cm is melted and constructed into a cylinder of the same radius, what will be the height of this cylinder?

A 8 cm

B 1.33 cm

C 2 cm

D 4 cm

Answer: D

Explanation:

Let height of cylinder = h cm and radius, $r = 10.5$ cm

Height of cone, $H = 12$ cm and Radius, $R = 10.5$ cm

According to ques, Volume of cylinder = Volume of cone

$$\Rightarrow \pi r^2 h = \frac{1}{3} \pi R^2 H$$

$$\Rightarrow (10.5)^2 \times h = \frac{1}{3} \times (10.5)^2 \times 12$$

$$\Rightarrow h = \frac{12}{3} = 4 \text{ cm}$$

\Rightarrow Ans - (D)

SSC CGL GD Constable Previous Papers (DOWNLOAD PDF)

Question 61

In a class of 65 students there are 39 girls. The average weight of these girls is 60 Kg and average weight of the full class is 64 kgs. What is the average weight of the boys of the class?

A 69

B 66

C 68

D 70

Answer: D

Explanation:

Total number of students = 65 and number of girls = 39

\Rightarrow Number of boys in class = $65 - 39 = 26$

Average weight of girls = 60 kg

\Rightarrow Total weight of girls = $60 \times 39 = 2340$ kg

Similarly, total weight of full class = $64 \times 65 = 4160$ kg

\Rightarrow Total weight of boys = $4160 - 2340 = 1820$ kg

\therefore Average weight of boys = $\frac{1820}{26} = 70$ kg

\Rightarrow Ans - (D)

Question 62

The length of the diagonal of a square is 14 cm. What is area of this square?

A 49 sq cm

B 196 sq cm

C 98 sq cm

D 77 sq cm

Answer: C

Explanation:

Let the side of square = s cm and diagonal, $d = 14$ cm

$$\Rightarrow (s)^2 + (s)^2 = (d)^2$$

$$\Rightarrow 2s^2 = (14)^2 = 196$$

$$\Rightarrow s^2 = \frac{196}{2} = 98$$

$$\therefore \text{Area of square} = s^2 = 98\text{cm}^2$$

\Rightarrow Ans - (C)

Question 63

Find equation of the perpendicular to segment joining the points A(0,4) and B(-5,9) and passing through the point P. Point P divides segment AB in the ratio 2:3.

A $x - y = 8$

B $x - y = -8$

C $x + y = -8$

D $x + y = 8$

Answer: B

Explanation:

Using section formula, the coordinates of point that divides line joining $A = (x_1, y_1)$ and $B = (x_2, y_2)$ in the ratio $a : b$

$$= \left(\frac{ax_2 + bx_1}{a+b}, \frac{ay_2 + by_1}{a+b} \right)$$

Coordinates of A(0,4) and B(-5,9). Let coordinates of P = (x,y) which divides AB in ratio = 2 : 3

$$\Rightarrow x = \frac{(2 \times -5) + (3 \times 0)}{2+3}$$

$$\Rightarrow 5x = -10$$

$$\Rightarrow x = \frac{-10}{5} = -2$$

$$\text{Similarly, } y = \frac{(2 \times 9) + (3 \times 4)}{2+3}$$

$$\Rightarrow 5y = 18 + 12 = 30$$

$$\Rightarrow y = \frac{30}{5} = 6$$

\Rightarrow Point P = (-2,6)

$$\text{Slope of AB} = \frac{9-4}{-5-0} = \frac{5}{-5} = -1$$

Let slope of line perpendicular to AB = m

Also, product of slopes of two perpendicular lines is -1

$$\Rightarrow m \times -1 = -1$$

$$\Rightarrow m = 1$$

Equation of lines having slope m and passing through point $P(-2,6)$ is

$$\Rightarrow (y - 6) = 1(x + 2)$$

$$\Rightarrow y - 6 = x + 2$$

$$\Rightarrow x - y = -8$$

\Rightarrow Ans - (B)

SSC Stenographer Previous Papers (DOWNLOAD PDF)

Question 64

A student multiplied a number by $4/7$ instead of $7/4$. What is the percentage error in the calculation?

A 206.25 percent

B 67.35 percent

C 33.67 percent

D 103.13 percent

Answer: B

Explanation:

Let the number be 28

When the student multiplied it by $4/7$, \Rightarrow original result = $\frac{4}{7} \times 28 = 16$

When the student multiply it by $7/4$, \Rightarrow New result = $\frac{7}{4} \times 28 = 49$

\Rightarrow Percentage error in calculation = $\frac{(49-16)}{49} \times 100$

$$= \frac{3300}{49} = 67.35\%$$

\Rightarrow Ans - (B)

Question 65

Painter A can paint a house in 40 days and Painter B can do it in 60 days. With help of C, they did the job in 20 days only. Then, C alone can do the job in

A 120 days

B 20 days

C 225 days

D 15 days

Answer: A

Explanation:

Let the total work to be done = 120 units

$$A's \text{ efficiency} = \frac{120}{40} = 3 \text{ units/day}$$

$$B's \text{ efficiency} = \frac{120}{60} = 2 \text{ units/day}$$

Let C's efficiency = x units/day

A, B and C complete the work together in 20 days

$$\Rightarrow (3 + 2 + x) \times 20 = 120$$

$$\Rightarrow 5 + x = \frac{120}{20} = 6$$

$$\Rightarrow x = 6 - 5 = 1$$

\therefore Time taken by C alone to complete the work = $\frac{120}{1} = 120$ days

\Rightarrow Ans - (A)

Question 66

Find the sum of the measures all the exterior angles of a decagon .

A 720°

B 2160°

C 1440°

D 1800°

Answer: C

Explanation:

Sum of all interior angles of a polygon having n sides = $(n - 2) \times 180^\circ$

Number of sides of decagon, $n = 10$

$$\Rightarrow \text{Sum of interior angles} = (10 - 2) \times 180^\circ$$

$$= 8 \times 180 = 1440^\circ$$

\Rightarrow Ans - (C)

SSC CGL Previous Papers (DOWNLOAD PDF)

Question 67

The diagonal of a square is $10\sqrt{2}$ cm, find its perimeter?

- A 160 cm
- B 80 cm
- C 20 cm
- D 40 cm

Answer: D

Explanation:

Let the side of square = s cm and diagonal, $d = 10\sqrt{2}$ cm

$$\Rightarrow (s)^2 + (s)^2 = (d)^2$$

$$\Rightarrow 2s^2 = (10\sqrt{2})^2 = 200$$

$$\Rightarrow s^2 = \frac{200}{2} = 100$$

$$\Rightarrow s = \sqrt{100} = 10 \text{ cm}$$

\therefore Perimeter of square = $4 \times 10 = 40$ cm

\Rightarrow Ans - (D)

Question 68

Which of the following is correct?

A $(6x + y)(x - 6y) = 6x^2 + 35xy - 6y^2$

B $(6x + y)(x - 6y) = 6x^2 - 35xy - 6y^2$

C $(6x + y)(x - 6y) = 6x^2 - 37xy - 6y^2$

D $(6x + y)(x - 6y) = 6x^2 + 37xy - 6y^2$

Answer: B

Explanation:

Expression : $(6x + y)(x - 6y)$

$$= 6x^2 - 36xy + xy - 6y^2$$

$$= 6x^2 - 35xy - 6y^2$$

\Rightarrow Ans - (B)

Question 69

If $a - b = -5$ and $a^2 + b^2 = 73$, then find ab .

- A 35
- B 14
- C 50
- D 24

Answer: D

Explanation:

Given : $(a - b) = -5$ and $a^2 + b^2 = 73$

Using $(a - b)^2 = a^2 + b^2 - 2ab$

$$\Rightarrow (-5)^2 = 73 - (2 \times ab)$$

$$\Rightarrow 2ab = 73 - 25 = 48$$

$$\Rightarrow ab = \frac{48}{2} = 24$$

\Rightarrow Ans - (D)

SSC CGL Free Mock Test (Latest Pattern)

Question 70

The sum of a non-zero number and ten times its reciprocal is 7. Find the number.

- A 4
- B 3
- C 5
- D 6

Answer: C

Explanation:

Let the number be x

According to ques, $\Rightarrow x + \frac{10}{x} = 7$

$$\Rightarrow \frac{x^2 + 10}{x} = 7$$

$$\Rightarrow x^2 + 10 = 7x$$

$$\Rightarrow x^2 - 7x + 10 = 0$$

$$\Rightarrow x^2 - 5x - 2x + 10 = 0$$

$$\Rightarrow x(x - 5) - 2(x - 5) = 0$$

$$\Rightarrow (x - 5)(x - 2) = 0$$

$$\Rightarrow x = 5, 2$$

Among the options, $x = 5$

\Rightarrow Ans - (C)

Question 71

If $2x + 2(4 + 3x) < 2 + 3x > 2x + \frac{x}{2}$; then x can take which of the following values?

A -3

B 1

C 0

D -1

Answer: A

Explanation:

Expression 1 : $2 + 3x > 2x + \frac{x}{2}$

$$\Rightarrow 4 + 6x > 5x$$

$$\Rightarrow 6x - 5x > -4$$

$$\Rightarrow x > -4 \text{ -----(i)}$$

Expression 2 : $2x + 2(4 + 3x) < 2 + 3x$

$$\Rightarrow 8x + 8 < 2 + 3x$$

$$\Rightarrow 8x - 3x < 2 - 8$$

$$\Rightarrow x < \frac{-6}{5} \text{ -----(ii)}$$

Combining inequalities (i) and (ii), we get : $-4 < x < \frac{-6}{5}$

Thus, only value that x can take among the options = **-3**

\Rightarrow Ans - (A)

Question 72

Read the Table carefully and answer the Given Questions

What is the total value of the stock?

	Quantity of Stock	Average Cost
Mobile Phones	88	12000
Cameras	69	9000
TVs	20	47000
Refrigerators	82	23000
Acs	99	23000

A 678

B 114

C 67.8

D 358

Answer: C

Explanation:

Total cost of mobiles = $88 \times 12000 = \text{Rs. } 10,56,000$

Total cost of Cameras = $69 \times 9000 = \text{Rs. } 6,21,000$

Total cost of TVs = $20 \times 47000 = \text{Rs. } 9,40,000$

Total cost of Refrigerator = $82 \times 23000 = \text{Rs. } 18,86,000$

Total cost of AC = $99 \times 23000 = \text{Rs. } 22,77,000$

\therefore Total cost = $10,56,000 + 6,21,000 + 9,40,000 + 18,86,000 + 22,77,000 = \text{Rs. } 67,80,000$

Total cost in lakhs = Rs 67.8 lakhs

=> Ans - (C)

SSC Stenographer Previous Papers (Latest Pattern)

Question 73

Refer the below table and answer the given question

Year	Ratio of Imports to Exports
2011	1
2012	0.7
2013	0.8
2014	1.4
2015	1.2

If the imports in 2012 was Rs. 1100 crores and the total exports in the years 2012 and 2013 together was Rs. 5200 crores, then the imports in 2013 was?

- A 3629
- B 1571
- C 4536
- D 2903

Answer: D

Explanation:

Imports in 2012 = Rs. 1100 crores

Let Exports in 2012 = Rs. y crores

Ratio of imports and exports in 2012 = 0.7

$$\Rightarrow \frac{1100}{y} = 0.7$$

$$\Rightarrow y = \frac{1100}{0.7} = 1571.42$$

Total exports In the years 2012 and 2013 together = Rs. 5200 crores

$$\Rightarrow \text{Exports in 2013} = \text{Rs. } (5200 - 1571.42) \text{ crores} = \text{Rs. } 3628.58 \text{ crores}$$

Let imports in 2013 = Rs. x crores

$$\text{Ratio of imports and exports in 2013} = \frac{x}{3628.58} = 0.8$$

$$\Rightarrow x = 3628.58 \times 0.8 = 2902.864 \approx 2903$$

\therefore Imports in 2013 was Rs. 2903 crores

\Rightarrow Ans - (D)

Question 74

Read the following data and answer the given questions

Measured On Birthday	Hieght of Children in CMs
4	100
5	110
6	115
7	125
8	135
9	145
10	155
11	160
12	165
13	170
14	175
15	180
16	185

What was the increase in the height of the child from 8th birth day to 15th birthday?

- A 50 cm
- B 55 cm
- C 40 cm
- D 45 cm

Answer: D

Explanation:

Height on 8th birthday = 135 cm

Height on 15th birthday = 180 cm

Increase in height = $180 - 135 = 45$ cm

=> Ans - (D)

Question 75

Read the data and answer the given data

Deep Sleep	25
Dreaming	5
Light Sleep	10
Extremely Sleep	5
Awake	55

Between 10 pm to 6 am, a fitness band records the following data. How long was the user Dreaming or was Extremely sleep ?

- A 0.8 hours
- B 0.3 hours
- C 0.7 hours
- D 1.3 hours

Answer: A

Explanation:

Total time between 10 pm to 6 am = 8 hours

% time spent on dreaming and Extremely sleeping = $5 + 5 = 10\%$

=> Time spent on dreaming or extremely sleeping = $\frac{10}{100} \times 8$

= $\frac{8}{10} = 0.8$ hours

=> Ans - (A)

SSC GD Constable Free Mock Test (Latest Pattern)

English

Instructions

For the following questions answer them individually

Question 76

In the following question, the sentence given with blank to be filled in with an appropriate word. Select the correct alternative out of the four and indicate it by selecting the appropriate option.

My husband has listed me as the _____ of his life insurance policy.

- A successor
- B beneficiary

- C heir
- D inheritor

Answer: B

SSC MTS Free Mock Test (Latest Pattern)

Question 77

In the following question, a sentence has been given in Active/Passive voice. Out of four alternatives suggested, select the one, which best expresses the same sentence in Passive/Active voice. They lock the door every night.

- A The door was being locked every night by them.
- B The door has been locked every night by them.
- C The door had been locked every night by them.
- D The door is locked every night by them.

Answer: D

Question 78

Select the antonym of "vile"

- A virtuous
- B coarse
- C vicious
- D abject

Answer: A

Question 79

Improve the bracketed part of the sentence

We (should had) the confidence that we will surely succeed one day.

- A could have
- B had to have
- C must have

D no improvement

Answer: C

SSC CPO Free Mock Test (Latest Pattern)

Question 80

In the following question, out of the four alternatives, select the alternative which is the best substitute of the phrase.

To invent (something) in order to deceive.

A to formulate

B to compose

C to project

D to fabricate

Answer: D

Question 81

Select the synonym of "nifty"

A dandy

B obnoxious

C grody

D gross

Answer: A

Question 82

In the following question, out of the four alternatives, select the alternative which best expresses the meaning of the idiom/phrase.

to foam at the mouth

A to be very angry

B to shout loudly

C to get very weak, dizzy

D to die of poisoning

Answer: A

25 SSC CHSL MOCKS 149

Question 83

In the following question, some part of the sentence may have errors. Find out which part of the sentence has an error and select the appropriate option. If a sentence is free from error, select 'No Error'.

Since they were all dressed up,(A)/she assumed they(B)/were going to church together.(C)/No error(D)

A A

B B

C C

D D

Answer: D

Question 84

In the following question, out of the four alternatives, select the alternative which is the best substitute of the phrase.

To disorder or disarrange (someone's hair), typically by running one's hands through it.

A to tangle

B to crumple

C to ruffle

D to crease

Answer: B

Question 85

In the following question, out of the four alternatives, select the alternative which best expresses the meaning of the idiom/phrase.

fuddy-duddy

A An ill mannered person that one accepts willingly because he/she is a very dear friend

B a person who is very old-fashioned and pompous

- C a shoddy work
- D a very confusing situation

Answer: B

SSC CHSL Important Questions and Answers (Download PDF)

Question 86

Select the word with the correct spelling.

- A rocketted
- B bienial
- C actuator
- D statuory

Answer: C

Question 87

Select the word with the correct spelling.

- A bathetick
- B promotar
- C ilusive
- D saddlers

Answer: D

Question 88

In the following question, some part of the sentence may have errors. Find out which part of the sentence has an error and select the appropriate option. If a sentence is free from error, select 'No Error'.

In spite of(A)/her irritation, she(B)/couldn't help smile.(C)/No error(D)

- A A
- B B
- C C

D D

Answer: C

SSC CHSL Free Videos (Youtube)

Question 89

In the following question, sentence given with blank is to be filled in with an appropriate word. Select the correct alternative out of the four and indicate it by selecting the appropriate option.

Since I forgot about Jeetu's birthday last week, I will send him a _____ greeting today.

A belated

B timely

C unpunctual

D tardy

Answer: A

Question 90

Rearrange the parts of the sentence in correct order.

The question

P-are on the right path

Q-is whether we

R-to the goal

A RPQ

B QRP

C QPR

D PRQ

Answer: C

Question 91

Select the antonym of "to amputate"

A to sever

B to fasten

C to truncate

D to lop

Answer: B

SSC CHSL Syllabus

Question 92

Rearrange the parts of the sentence in correct order.

Ensuring security

P-harder than hacking into a system

Q-of data, information, and

R-communication is considerably

A RQP

B RPQ

C PRQ

D QRP

Answer: D

Question 93

In the following question, a sentence has been given in Direct/Indirect speech. Out of the four alternatives suggested, select the one, which best express the same sentence in Indirect/Direct speech.

Teacher said to children, "Have you prepared well for the finals?"

A Teacher asked the children whether they have prepared well for the finals.

B Teacher asked the children whether they have been preparing well for the finals.

C Teacher asked the children if they did prepare well for the finals.

D Teacher asked the children if they had prepared well for the finals.

Answer: D

Question 94

Improve the bracketed part of the sentence.

The guide's (knowledge) of the history of the monument surprised me.

A knowing

- B familiarity
- C know how
- D no improvement

Answer: D

SSC CHSL Expected Cutt off

Question 95

Select the synonym of "to visualize"

- A to repudiate
- B to anticipate
- C to eschew
- D to scorn

Answer: B

Explanation:

Start Group:

Instructions

In the following passage, some of the words have been left out. Read the passage carefully and select the correct answer for the given blank out of the four alternatives.

Going _____(1)_____ defections, attempts to topple governments and establish governments, it is time to ask, _____(2)_____ is the relationship between federalism, States, representative _____(3)_____ and justice? Justice follows only _____(4)_____ the wants of people who have elected representatives are addressed, and when these representatives _____(5)_____ that their own status is derivative.

Question 96

Going _____(1)_____ defections, attempts to topple governments and establish governments

- A away
- B beyond
- C far
- D over

Answer: B

Question 97

It is time to ask, _____(2)_____ is the Relationship

- A what
- B why
- C where
- D which

Answer: A

SSC CHSL Study Material

Question 98

Between federalism, States, representative _____(3)_____ and justice?

- A autocracy
- B anarchy
- C democracy
- D aristocracy

Answer: C

Question 99

Justice follows only _____(4)_____ the wants of people

- A when
- B whether
- C as
- D then

Answer: A

Question 100

when these representatives _____(5)_____ that their own status is derivative

- A verify
- B forget
- C diagnose
- D recognise

Answer: D

SSC CHSL Free App

SSC CHSL Free Mock Test

SSC CHSL Previous Papers (DOWNLOAD PDF)

SSC CGL MTS Previous Papers (DOWNLOAD PDF)

SSC CGL GD Constable Previous Papers (DOWNLOAD PDF)

SSC Stenographer Previous Papers (DOWNLOAD PDF)

SSC CGL Previous Papers (DOWNLOAD PDF)

SSC CGL Free Mock Test (Latest Pattern)

SSC Stenographer Previous Papers (Latest Pattern)

SSC GD Constable Free Mock Test (Latest Pattern)

SSC MTS Free Mock Test (Latest Pattern)

SSC CPO Free Mock Test (Latest Pattern)

25 SSC CHSL MOCKS 149

SSC CHSL Important Questions and Answers (Download PDF)

SSC CHSL Free Videos (Youtube)

SSC CHSL Syllabus

SSC CHSL Expected Cutt off

SSC CHSL Study Material

SSC CHSL Free App