



SSC CHSL 8 Feb 2017 Evening Shift

All rights reserved. No part of this publication may be reproduced, distributed, or transmitted in any form or by any means, electronic, mechanical, photocopying, recording or otherwise, or stored in any retrieval system of any nature without the permission of cracku.in, application for which shall be made to support@cracku.in

Reasoning

Instructions

For the following questions answer them individually

Question 1

Choose the related word/letters/number from the given alternatives. Horse : Neigh :: Elephant : ?

- A Quack
- B Trumpet
- C Mew
- D Grunt

Answer: B

Explanation:

Expression = Horse : Neigh :: Elephant : ?

The second is the sound made by the first. Sound made by horse is neigh, similarly an elephant trumpets.

=> Ans - (B)

SSC CHSL Free Mock Test

Question 2

Choose the related word/letters/number from the given alternatives.

GH : 78 :: ? : 1819

- A HG
- B LM
- C RS
- D IJ

Answer: C

Explanation:

Expression = GH : 78 :: ? : 1819

Numerical values of two alphabets are concatenated.

Eg :- G = 7 , H = 8 \equiv 78

Similarly, 18, 19 \equiv RS

=> Ans - (C)

Question 3

Choose the related word/letters/number from the given alternatives.

CAR : RAC :: TYRE : ?

A RUBBER

B ERTY

C ERYT

D STEEL

Answer: C

Explanation:

Expression = CAR : RAC :: TYRE : ?

The pattern followed is that the word is written in *reverse* order, i.e. first letter at last position, second at second last and so on.

Similarly, reverse of TYRE : **ERYT**

=> Ans - (C)

Question 4

Choose the related word/letters/number from the given alternatives.

12 : 60 :: 28 : ?

A 160

B 150

C 145

D 140

Answer: D

Explanation:

Expression = 12 : 60 :: 28 : ?

The pattern followed is = $x : 5x$

Eg :- $12 : 5 \times 12 = 12 : 60$

Similarly, $5 \times 28 = 140$

=> Ans - (D)

SSC CHSL Previous Papers (DOWNLOAD PDF)

Question 5

Choose the odd word/letters/number/number pair from the given alternatives.

- A Sirius
- B Proximacentauri
- C Deimos
- D Alpha centauri

Answer: C

Explanation:

Deimos is a natural satellite, all others are stars, hence Deimos is the odd one out.

=> Ans - (C)

Question 6

Choose the odd word/letters/number/number pair from the given alternatives.

- A PON
- B SRQ
- C XYZ
- D VUT

Answer: C

Explanation:

(A) : P (-1 letter) = O (-1 letter) = N

(B) : S (-1 letter) = R (-1 letter) = Q

(C) : X (+1 letter) = Y (+1 letter) = Z

(D) : V (-1 letter) = U (-1 letter) = T

=> Ans - (C)

Question 7

Choose the odd word/letters/number/number pair from the given alternatives.

- A 1919

B 5656

C 6761

D 7760

Answer: B

Explanation:

Apart from 5656, sum of digits of other numbers is 20, hence 5656 is the odd one out.

=> Ans - (B)

SSC CGL MTS Previous Papers (DOWNLOAD PDF)

Question 8

Choose the odd word/letters/number/number pair from the given alternatives.

A 2890

B 3375

C 1728

D 1331

Answer: A

Explanation:

$3375 = (15)^3$, $1728 = (12)^3$ and $1331 = (11)^3$, 2890 is not a perfect cube number, hence 2890 is the odd one out.

=> Ans - (A)

Question 9

A series is given with one term missing. Choose the correct alternative from the given ones that will complete the series. Double, Triple, Quadruple, ?

A Quintuple

B Nonuple

C Sextuple

D Octuple

Answer: A

Explanation:

Successive series of number of sides is given.

= Double -> Triple -> Quadruple -> Quintuple

=> Ans - (A)

Question 10

A series is given with one term missing. Choose the correct alternative from the given ones that will complete the series. AC, EG, ?, MO

A IK

B IJ

C IL

D IM

Answer: A

Explanation:

Expression : AC, EG, ?, MO

The pattern followed in each letter of the terms is :

1st letter : A (+4 letters) = E (+4 letters) = I (+4 letters) = M

2nd letter : C (+4 letters) = G (+4 letters) = K (+4 letters) = O

Thus, missing term = **IK**

=> Ans - (A)

SSC CGL GD Constable Previous Papers (DOWNLOAD PDF)

Question 11

A series is given with one term missing. Choose the correct alternative from the given ones that will complete the series.

?, WX, AB, FG

A TU

B XW

C PQ

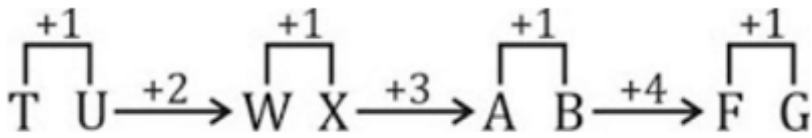
D UV

Answer: A

Explanation:

Expression : ?, WX, AB, FG

The pattern followed is :



Thus, missing term = TU

=> Ans - (A)

Question 12

A series is given with one term missing. Choose the correct alternative from the given ones that will complete the series.

30, 60, 360, 3600, ?

A 48500

B 50500

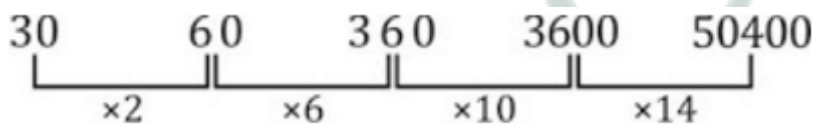
C 50400

D 40800

Answer: C

Explanation:

Expression : 30, 60, 360, 3600, ?



Thus, missing number = 50400

=> Ans - (C)

Question 13

In the following question, two statements are given each followed by two conclusions I and II. You have to consider the statements to be true even if they seem to be at variance from commonly known facts. You have to decide which of the given conclusions, if any, follows from the given statements.

Statement:

(I) Women generally prefer window shopping.

(II) Males generally are not fond of window shopping and they feel that it is sheer waste of time.

Conclusions:

(I) Shopping behavior is different for males and females.

(II) If males go for window shopping, they don't utilize much time is selecting a product.

A Only conclusion II follows

- B Conclusion I and II both follow
- C Neither I nor II follow
- D Only conclusion I follows

Answer: D

SSC Stenographer Previous Papers (DOWNLOAD PDF)

Question 14

Five boys A, B, C, D and E are standing in a line. A is taller than E but shorter than D. B is shorter than E and C is the tallest. Who is in the middle ?

- A A
- B C
- C D
- D E

Answer: A

Explanation:

A is taller than E but shorter than D, $\Rightarrow D > A > E$.

B is shorter than E, $\Rightarrow E > B$.

Also, C is the tallest.

Combining above statements, we get : $C > D > A > E > B$

\therefore A is in the middle.

\Rightarrow Ans - (A)

Question 15

Arrange the given words in the sequence in which they occur in the dictionary.

- i. Treadmill
- ii. Treason
- iii. Treacherous
- iv. Tread

- A ii, iii, iv, i
- B iii, iv, ii, i
- C iii, iv, i, ii

D i, ii, iii, iv

Answer: C

Explanation:

As per the order of dictionary :

= Treacherous -> Tread -> Treadmill -> Treason

≡ iii, iv, i, ii

=> Ans - (C)

Question 16

In a certain code language, "RIVER" is written as "12351" and "RED" is written as "156". How is "DRIVER" written in that code language?

A 612311

B 612531

C 621351

D 612351

Answer: D

Explanation:

The codes for each letter is given :

D -> 6

R -> 1

I -> 2

V -> 3

E -> 5

R -> 1

Thus, DRIVER : 612351

=> Ans - (D)

SSC CGL Previous Papers (DOWNLOAD PDF)

Question 17

In the following question select the missing number from the given series

49	169	484
81	144	625
16	25	?

A 37

B 47

C 48

D 25

Answer: B

Explanation:

The logic followed here is,

$$\sqrt{49} + \sqrt{81} \Rightarrow 7 + 9 = 16,$$

$$\sqrt{169} + \sqrt{144} \Rightarrow 13 + 12 = 25,$$

$$\sqrt{484} + \sqrt{624} \Rightarrow 22 + 25 = 47.$$

Hence, option B is the correct answer.

Question 18

If "+" means "minus", "x" means "divided by", "÷" means "plus" and "-" means "multiplied by", then $126 \times 14 + 7 - 3 \div 2 = ?$

A -10

B -12

C -17

D -41

Answer: A

Explanation:

Expression = $126 \times 14 + 7 - 3 \div 2 = ?$

$$\equiv 126 \div 14 - 7 \times 3 + 2$$

$$= 9 - 21 + 2$$

$$= 11 - 21 = -10$$

=> Ans - (A)

Question 19

In the following question, which one set of letters when sequentially placed at the gaps in the given letter series shall complete it?

d_ba_c_a_cb_

- A cdbda
- B cdbad
- C bdacd
- D abdca

Answer: A

Explanation:

The pattern followed is that in groups of 4, the term 'dcba' is repeated.

= dcba dcba dcba

=> Ans - (A)

SSC CGL Free Mock Test (Latest Pattern)

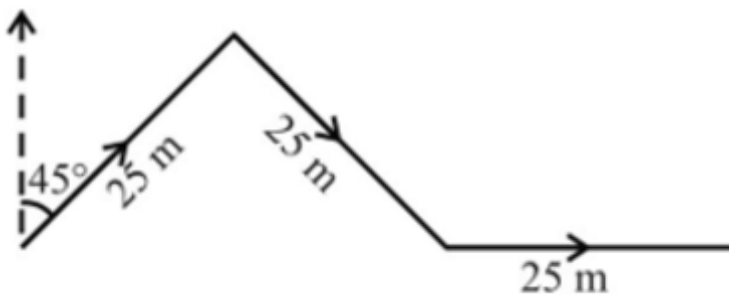
Question 20

Neeraj is facing north, then he turns 45 degree right and goes 25 m, then turns in south-east direction to move 25 m and from there 25 m to east. In which direction/place is he from his original place?

- A North
- B East
- C West
- D South

Answer: B

Explanation:



Neeraj is facing north, then he turns 45 degree right and goes 25 m towards north east, then turns in south-east direction to move 25 m and finally 25 m to the east.

Thus, he is east from his original place.

=> Ans - (B)

Question 21

A word is represented by only one set of numbers as given in any one of the alternatives. The sets of numbers given in the alternatives are represented by two classes of alphabets as shown in the given two matrices. The columns and rows of Matrix-I are numbered from 0 to 4 and that of Matrix-II are numbered from 5 to 9. A letter from these matrices can be represented first by its row and next by its column, for example, 'E' can be represented by 02, 11, etc. and can be represented by 65, 56 etc. Similarly, you have to identify the set for the word 'EAGER'.

	0	1	2	3	4
0	S	T	E	D	B
1	A	E	O	F	A
2	E	T	P	A	N
3	D	G	A	S	M
4	G	A	Q	W	1

	5	6	7	8	9
5	F	G	M	R	C
6	G	N	R	K	L
7	A	R	Y	J	F
8	R	B	W	G	Y
9	S	V	Q	H	T

- A 02,10,65,11,68
- B 02,10,65,87,85
- C 02,10,65,11,85
- D 02,10,65,59,85

Answer: C

Explanation:

(A) : 02,10,65,11,68 = EAGEK

(B) : 02,10,65,87,85 = EAGWR

(C) : 02,10,65,11,85 = **EAGER**

(D) : 02,10,65,59,85 = EAGCR

=> Ans - (C)

Question 22

Introducing a boy Ankit said, "He is the son of daughter of my grandfather's son". How is that boy related to Ankit?

- A Cousin

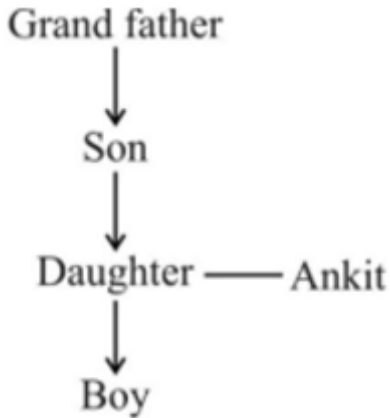
- B Brother
- C Father-in-law
- D Nephew

Answer: D

Explanation:

Daughter of Ankit's grandfather's son = Ankit's sister

Relation is :



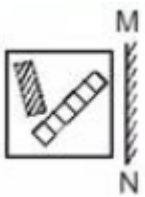
Thus, the boy is Ankit's nephew.

=> Ans - (D)

SSC Stenographer Previous Papers (Latest Pattern)

Question 23

If a mirror is placed on the line MN, then which of the answer figures is the right image of the given figure?





Answer: B

Explanation:

A vertical mirror is placed, so the object on the left will appear right in reverse position and vice-versa. So the rectangle (having squares inside) will be reversed, thus the first and last options will be eliminated. Thus second option is the right image.

=> Ans - (B)

Question 24

Identify the diagram that best represents the relationship among the given classes. Earth, Saturn, Planet, Star



Answer: C

Explanation:

Earth and Saturn are both planets but are different (hence do not intersect each other), and star is a different body in solar system.

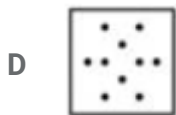
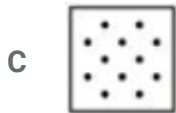
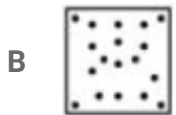
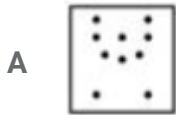
Thus, the venn diagram that best describes above relationship is :



=> Ans - (C)

Question 25

A piece of paper is folded and punched as shown below in the question figures. From the given answer figures, indicate how it will appear when opened.



Answer: C

SSC GD Constable Free Mock Test (Latest Pattern)

General Awareness

Instructions

For the following questions answer them individually

Question 26

Which drug is used as an Anti-Anxiety drug?

- A Warfarin
- B Diazepam
- C Latanoprost
- D Hydralazine

Answer: B

SSC MTS Free Mock Test (Latest Pattern)

Question 27

Ficus benghalensis is the scientific name of _____

- A Banyan
- B Pineapple
- C Babul
- D Tulsi

Answer: A

Question 28

Equus burchellii is the scientific name of _____

- A Horse
- B Zebra
- C Buffalo
- D Ass

Answer: B

Question 29

Atomic number of which of the following elements is greater than that of Copper?

- A Iron
- B Chromium
- C Zinc
- D Manganese

Answer: C

SSC CPO Free Mock Test (Latest Pattern)

Question 30

Vacuum Tubes were used by _____ Generation of Computers.

- A First
- B Second
- C Third
- D Fourth

Answer: A

Question 31

Ghumura is a folk dance of _____

- A Odisha
- B Andhra Pradesh
- C Jammu & Kashmir
- D Maharashtra

Answer: A

Question 32

7 workers work in a printing press. Each gets paid Rs 450 per day. The 8th worker demands Rs 500 per day. If this worker is hired then all other workers must be paid Rs 500. The marginal resource (labour) cost of the 8th worker is .

- A Rs 50
- B Rs 850
- C Rs 400
- D Rs 100

Answer: B

25 SSC CHSL MOCKS 149

Question 33

An increase of 1% per annum in the rate of growth of the money supply will increase inflation in the long run by .

- A Zero percent
- B One percent
- C 0.5 percent
- D More than one percent

Answer: B

Question 34

Which of the following is false with reference to a photo-voltaic cell?

- A It is another name as solar cell
- B It can be used as infra-red detectors
- C It can store light energy in the form of electrical energy
- D It converts electric energy into light energy

Answer: D

Question 35

Methane an air pollutant is produced _____

- A by action of ultraviolet light on nitrogenous compounds.
- B as a by-product of manufacturing ammoniacal fertilizers
- C by burning of coal in insufficient air
- D by digestion of food by animals

Answer: D

SSC CHSL Important Questions and Answers (Download PDF)

Question 36

In the National Flag of India, Ashoka Chakra is a _____spoked wheel.

- A 8
- B 12
- C 16
- D 24

Answer: D

Question 37

The longest day of the year in the Northern Hemisphere occur on _____

- A 20th May
- B 21st June
- C 20th July
- D 21st August

Answer: B

Question 38

Chandragupta Maurya was an ardent follower of _____

- A Sikhism
- B Jainism
- C Buddhism
- D Jewism

Answer: B

SSC CHSL Free Videos (Youtube)

Question 39

The First Battle of Panipat in 1526 was fought between the the Lodi Empire and .

- A Babur
- B Humayun

- C Akbar
- D Aurangzeb

Answer: A

Question 40

Who Invented Ceiling fan?

- A Lloyd Groff Copeman
- B Bartolomeo Cristofori
- C Leonardo da Vinci
- D Philip Diehl

Answer: D

Question 41

Rate of work done is .

- A Energy
- B Power
- C Momentum
- D Impulse

Answer: B

SSC CHSL Syllabus

Question 42

What is the unit of the physical quantity "Young's modulus"?

- A newton
- B erg
- C joule
- D pascal

Answer: D

Question 43

Pradhan Mantri Mudra Yojana was announced under the leadership of _____

- A Jawaharlal Nehru
- B Indira Gandhi
- C Narendra Modi
- D Manmohan Singh

Answer: C

Question 44

The number of parliamentary seats (Lok Sabha) of Punjab is _____

- A 2
- B 13
- C 20
- D 25

Answer: B

SSC CHSL Expected Cutt off

Question 45

Who has the record of highest number of Gold Medals in the history of Olympics?

- A Usain Bolt
- B Michael Phelps
- C Larisa Latynina
- D Ian Thorpe

Answer: B

Question 46

Who is the author of "Gently Falls: The Bakula"?

- A Amitav Ghosh
- B Mitali Meelan
- C Ravinder Singh
- D Sudha Murty

Answer: D

Question 47

Which fort is also known as the Golden Fort?

- A Chittorgarh
- B Kumbhalgarh
- C Ranthambore
- D Jaisalmer

Answer: D

SSC CHSL Study Material

Question 48

Highest Civilian Honour received by Shabana Azmi is

- A Padma Shri
- B Padma Bhushan
- C Padma Vibhushan
- D Bharat Ratna

Answer: C

Question 49

Which of the following is false?

- A Hydrogen atom is roughly a third of the mass of tritium
- B Deuterium is called heavy hydrogen

- C Deuterium atom has 1 neutron
D Protium is the rarest isotope of hydrogen

Answer: D

Question 50

Which Indian lake is renowned as the Lagoon lake of India?

- A Kanjia Lake
B Agra Lake
C Mansar Lake
D Chilika lake

Answer: D

SSC CHSL Free App

Mathematics

Instructions

For the following questions answer them individually

Question 51

What is the LCM (least common multiple) of 57 and 93?

- A 1767
B 1567
C 1576
D 1919

Answer: A

Explanation:

Prime factorization of 57 = 3×19

Prime factorization of 93 = 3×31

=> L.C.M. of 57 and 93 = $3 \times 19 \times 31$

= $57 \times 31 = 1767$

=> Ans - (A)

SSC CHSL Free Mock Test

Question 52

If $\sec -5\pi/4 = x$, then the value of x is

- A $\frac{-1}{\sqrt{3}}$
- B $-\sqrt{2}$
- C -1
- D $\sqrt{3}$

Answer: B

Explanation:

Expression : $\sec -5\pi/4 = x$

$$\begin{aligned}\because \sec(-x) &= \sec(x) \\ &= \sec\left(\frac{-5\pi}{4}\right) = \sec\left(\frac{5\pi}{4}\right) \\ &= \sec\left(\pi + \frac{\pi}{4}\right) = -\sec\left(\frac{\pi}{4}\right) \\ &= -\sqrt{2}\end{aligned}$$

=> Ans - (B)

Question 53

Marked price of an item is Rs 500. On purchase of 2 items discount is 8%, on purchase of 3 items discount is 16%. Radha buys 5 items, what is the effective discount?

- A 20.4 percent
- B 23.25 percent
- C 12.8 percent
- D 35 percent

Answer: C

Explanation:

Marked price of item = Rs. 500

=> Marked price of 2 items = $2 \times 500 = \text{Rs. } 1000$

Amount saved on buying 2 items = $\frac{8}{100} \times 1000 = \text{Rs. } 80$

Marked price of 3 items = $3 \times 500 = \text{Rs. } 1500$

$$\text{Amount saved on buying 3 items} = \frac{16}{100} \times 1500 = \text{Rs.}240$$

Thus, on buying 5 items, total amount saved = 80 + 240 = Rs. 320

Total marked price of 5 items = 5 × 500 = Rs. 2500

$$\therefore \text{Effective discount} = \frac{320}{2500} \times 100$$

$$= \frac{320}{25} = 12.8\%$$

=> Ans - (C)

Question 54

If $\tan(A/2) = x$, then the value of x is

- A $\sin A / (1 - \cos A)$
- B $\sin A / (1 + \cos A)$
- C $\sqrt{[\sin A / (1 + \cos A)]}$
- D $\sqrt{[\sin A / (1 - \cos A)]}$

Answer: B

Explanation:

Using double angle formula, we know that $\cos(2\theta) = \cos^2\theta - \sin^2\theta$

$$\Rightarrow \cos(2\theta) = (1 - \sin^2\theta) - \sin^2\theta$$

$$\Rightarrow \cos(2\theta) = 1 - 2\sin^2\theta$$

Replacing θ by $\frac{A}{2}$, we get :

$$\Rightarrow \cos A = 1 - 2\sin^2\left(\frac{A}{2}\right)$$

$$\Rightarrow 2\sin^2\left(\frac{A}{2}\right) = 1 - \cos A$$

$$\Rightarrow \sin^2\left(\frac{A}{2}\right) = \frac{(1 - \cos A)}{2}$$

$$\Rightarrow \sin\left(\frac{A}{2}\right) = \sqrt{\frac{(1 - \cos A)}{2}}$$

$$\text{Similarly, } \Rightarrow \cos\left(\frac{A}{2}\right) = \sqrt{\frac{(1 + \cos A)}{2}}$$

Now, to find : $\tan\left(\frac{A}{2}\right)$

$$= \sin\left(\frac{A}{2}\right) \div \cos\left(\frac{A}{2}\right)$$

$$= \sqrt{\frac{(1 - \cos A)}{2}} \div \sqrt{\frac{(1 + \cos A)}{2}}$$

$$= \sqrt{\frac{(1 - \cos A)}{2}} \times \sqrt{\frac{2}{(1 + \cos A)}}$$

$$= \sqrt{\frac{1 - \cos A}{1 + \cos A}}$$

$$\begin{aligned}
&= \sqrt{\frac{1-\cos A}{1+\cos A} \times \frac{1+\cos A}{1+\cos A}} \\
&= \sqrt{\frac{1-\cos^2 A}{(1+\cos A)^2}} = \sqrt{\frac{\sin^2 A}{(1+\cos A)^2}} \\
&= \frac{\sin A}{1+\cos A} \\
&\Rightarrow \text{Ans - (B)}
\end{aligned}$$

SSC CHSL Previous Papers (DOWNLOAD PDF)

Question 55

If $2\sec A - (1 + \sin A)/\cos A = x$, then the value of x is

- A $\operatorname{cosec} A/(1+\sin A)$
- B $\cos A/(1+\sin A)$
- C $\cos A(1+\sin A)$
- D $\operatorname{cosec} A(1+\sin A)$

Answer: B

Explanation:

Expression : $2\sec A - (1 + \sin A)/\cos A = x$

$$\begin{aligned}
&= \frac{2}{\sec A} - \frac{(1+\sin A)}{\cos A} \\
&= \frac{2-1-\sin A}{\cos A} = \frac{1-\sin A}{\cos A}
\end{aligned}$$

Multiplying both numerator and denominator by $(1 + \sin A)$

$$\begin{aligned}
&= \frac{1-\sin A}{\cos A} \times \frac{(1+\sin A)}{(1+\sin A)} \\
&= \frac{1-\sin^2 A}{\cos A(1+\sin A)} = \frac{\cos^2 A}{\cos A(1+\sin A)} \\
&= \frac{\cos A}{1+\sin A}
\end{aligned}$$

\Rightarrow Ans - (B)

Question 56

The mean of marks secured by 60 students in division A of class X is 64, 40 students of division B is 60 and that of 60 students of division C is 58. Find the mean of marks of the students of three divisions of Class X.

- A 60.05
- B 59.35
- C 62.15

D 60.75

Answer: D

Explanation:

Total marks secured by 60 students in division A = $60 \times 64 = 3840$

Total marks secured by 40 students in division B = $40 \times 60 = 2400$

Total marks secured by 60 students in division C = $60 \times 58 = 3480$

=> Mean of marks of the students of three divisions of Class X = $\frac{(3840+2400+3480)}{(60+40+60)}$

$$= \frac{9720}{160} = 60.75$$

=> Ans - (D)

Question 57

The difference between simple and compound interests compounded annually on a certain sum of money for 2 years at 5% per annum is Rs 45. The sum is

A Rs 36000

B Rs 72000

C Rs 18000

D Rs 54000

Answer: C

Explanation:

Let the given sum = Rs. $100x$

Rate of interest = 5% and time period = 2 years

$$\text{Compound interest} = P \left[\left(1 + \frac{R}{100} \right)^T - 1 \right]$$

$$= 100x \left[\left(1 + \frac{5}{100} \right)^2 - 1 \right]$$

$$= 100x \left[\left(\frac{21}{20} \right)^2 - 1 \right] = 100x \left(\frac{441-400}{400} \right)$$

$$= 100x \times \frac{41}{400} = \frac{41x}{4}$$

$$\text{Simple interest} = \frac{P \times R \times T}{100}$$

$$= \frac{100x \times 5 \times 2}{100} = 10x$$

$$\Rightarrow \text{Difference between simple and compound interests} = \frac{41x}{4} - 10x = 45$$

$$\Rightarrow \frac{41x - 40x}{4} = 45$$

$$\Rightarrow x = 4 \times 45 = 180$$

\therefore Value of given sum = $100 \times 180 = \text{Rs.}18,000$

=> Ans - (C)

SSC CGL MTS Previous Papers (DOWNLOAD PDF)

Question 58

The price of an article is cut by 33%, to restore to its original value, the new price must be increased by

- A 33 percent
- B 49.25 percent
- C 24.81 percent
- D 41.25 percent

Answer: B

Explanation:

Let the original price of the article = Rs. 100

If the price is cut by 33%, => New price = $\frac{100-33}{100} \times 100 = Rs.67$

To restore to its original value the new price must be increased by = $\frac{100-67}{67} \times 100$

= $\frac{3300}{67} \approx 49.25\%$

=> Ans - (B)

Question 59

The third proportional of two numbers 9 and 24 is

- A 39
- B 48
- C 72
- D 64

Answer: D

Explanation:

Three numbers a,b,c are in proportion iff $b^2 = ac$ where b is the mean proportion and c is the third proportion

The given numbers are 9 and 24

=> $(24)^2 = 9 \times c$

=> $c = \frac{24 \times 24}{9}$

=> $c = 8 \times 8 = 64$

=> Ans - (D)

Question 60

The total surface area of a hemisphere is 166.32 sq cm, find its radius?

- A 4.2 cm
- B 8.4 cm
- C 1.4 cm
- D 2.1 cm

Answer: A

Explanation:

Let radius of hemisphere = r cm

Total surface area of hemisphere = $3\pi r^2 = 166.32$

$$\Rightarrow r^2 = \frac{166.32}{3\pi}$$

$$\Rightarrow r^2 = 55.44 \times \frac{7}{22}$$

$$\Rightarrow r^2 = 2.52 \times 7 = 17.64$$

$$\Rightarrow r = \sqrt{17.64} = 4.2 \text{ cm}$$

=> Ans - (A)

SSC CGL GD Constable Previous Papers (DOWNLOAD PDF)

Question 61

ΔABC is similar to ΔDEF . Length of AB is 18 cm and length of the corresponding side DE is 10 cm. What is the ratio of Perimeter of ΔABC : Perimeter of ΔDEF ?

- A 5:9
- B 9:5
- C 81:25
- D 25:81

Answer: B

Explanation:

It is given that $\Delta ABC \sim \Delta DEF$

Also, length of AB = 18 cm and length of the corresponding side DE = 10 cm

=> Ratio of Perimeter of ΔABC : Perimeter of ΔDEF = Ratio of corresponding sides = AB : DE

$$= \frac{18}{10} = \frac{9}{5}$$

\therefore The required ratio is 9 : 5

=> Ans - (B)

Question 62

Two cars travel from city A to city B at a speed of 36 and 48 km/hr respectively. If one car takes 3 hours lesser time than the other car for the journey, then the distance between City A and City B is

A 518 km

B 432 km

C 648 km

D 346 km

Answer: B

Explanation:

Let the distance between City A and City B = d km

Speed of first car = 36 km/hr and speed of second car = 48 km/hr

Let time taken by first car = t hrs and time taken by second car = $(t - 3)$ hrs

Using, speed = distance/time for first car :

$$\Rightarrow \frac{d}{t} = 36$$

$$\Rightarrow d = 36t \text{ -----(i)}$$

For second car, $\Rightarrow \frac{d}{t-3} = 48$

Substituting value of d from equation (i), we get :

$$\Rightarrow 36t = 48t - 144$$

$$\Rightarrow 48t - 36t = 12t = 144$$

$$\Rightarrow t = \frac{144}{12} = 12 \text{ hrs}$$

From equation (i), $\Rightarrow d = 36 \times 12 = 432$ km

=> Ans - (B)

Question 63

A shopkeeper by selling 13 Titan watches, earns a profit equal to the selling price of 3 Titan watches. His profit percentage is

A 30 percent

- B 23.0 percent
- C 46 percent
- D 16 percent

Answer: A

Explanation:

Let cost price of a watch = $Rs.x$

Selling price of a watch = $Rs.y$

=> Selling price of 3 watches = $Rs.3y$

According to ques, => $13(y - x) = 3y$

=> $13y - 13x = 3y$

=> $10y = 13x$

=> $\frac{x}{y} = \frac{10}{13}$

Let Cost price, $x = 10$ and selling price, $y = 13$

\therefore Profit % = $\frac{y-x}{x} \times 100$

= $\frac{13-10}{10} \times 100$

= $3 \times 10 = 30\%$

=> Ans - (A)

SSC Stenographer Previous Papers (DOWNLOAD PDF)

Question 64

The line passing through $(-2,5)$ and $(6,b)$ is perpendicular to the line $20x + 5y = 3$. Find b ?

- A -7
- B 4
- C 7
- D -4

Answer: C

Explanation:

Slope of line having equation : $ax + by + c = 0$ is $\frac{-a}{b}$

=> Slope of line $20x + 5y = 3$ is $\frac{-20}{5} = -4$

Slope line passing through $(-2,5)$ and $(6,b) = \frac{b-5}{6+2} = \frac{(b-5)}{8}$

Also, product of slopes of two perpendicular lines is -1

$$\Rightarrow \frac{(b-5)}{8} \times -4 = -1$$

$$\Rightarrow b - 5 = \frac{8}{4} = 2$$

$$\Rightarrow b = 2 + 5 = 7$$

\Rightarrow Ans - (C)

Question 65

Find the sum of interior angles of a dodecagon?

A 1620°

B 1800°

C 1440°

D 1260°

Answer: B

Explanation:

Sum of all interior angles of a polygon having n sides $= (n - 2) \times 180^\circ$

Number of sides of dodecagon, $n = 12$

$$\Rightarrow \text{Sum of interior angles} = (12 - 2) \times 180^\circ$$

$$= 10 \times 180 = 1800^\circ$$

\Rightarrow Ans - (B)

Question 66

A does 80% of a work in 20 days. He then calls in B and they together finish the remaining work in 4 days. How long B alone would take to do the whole work?

A 12.5 days

B 100 days

C 22.5 days

D 35 days

Answer: B

Explanation:

Let total work to be done = 100 units

Work done by A in 20 days = $\frac{80}{100} \times 100 = 80$ units

A's efficiency = $\frac{80}{20} = 4$ units/day

Remaining work = $100 - 80 = 20$ units

Let B's efficiency = x units/day

Now, A and B complete remaining work in 4 days

$$\Rightarrow (4 + x) \times 4 = 20$$

$$\Rightarrow 4 + x = \frac{20}{4} = 5$$

$$\Rightarrow x = 5 - 4 = 1$$

\therefore Time taken by B to complete the whole work alone = $\frac{100}{1} = 100$ days

\Rightarrow Ans - (B)

SSC CGL Previous Papers (DOWNLOAD PDF)

Question 67

The area of a circle is 616 sq cm, find its circumference?

A 44 cm

B 88 cm

C 22 cm

D 176 cm

Answer: B

Explanation:

Let the radius of circle = r cm

$$\text{Area of circle} = \pi r^2 = 616$$

$$\Rightarrow \frac{22}{7} \times (r)^2 = 616$$

$$\Rightarrow (r)^2 = \frac{616 \times 7}{22} = 196$$

$$\Rightarrow r = \sqrt{196} = 14 \text{ cm}$$

\therefore Circumference of circle = $2\pi r$

$$= 2 \times \frac{22}{7} \times 14$$

$$= 44 \times 2 = 88 \text{ cm}$$

\Rightarrow Ans - (B)

Question 68

If $3x - 8(2 - x) = -19$, then the value of x is

- A $-3/11$
- B $-33/11$
- C $-3/5$
- D $-33/5$

Answer: A

Explanation:

Expression : $3x - 8(2 - x) = -19$

$$\Rightarrow 3x - 16 + 8x = -19$$

$$\Rightarrow 11x = 16 - 19 = -3$$

$$\Rightarrow x = \frac{-3}{11}$$

\Rightarrow Ans - (A)

Question 69

If $x - y = 6$ and $xy = 40$, then find $x^2 + y^2$

- A 116
- B 80
- C 89
- D 146

Answer: A

Explanation:

Given : $(x - y) = 6$ and $xy = 40$

Using $(x - y)^2 = x^2 + y^2 - 2xy$

$$\Rightarrow (6)^2 = (x^2 + y^2) - (2 \times 40)$$

$$\Rightarrow (x^2 + y^2) = 36 + 80 = 116$$

\Rightarrow Ans - (A)

SSC CGL Free Mock Test (Latest Pattern)

Question 70

Product of digits of a 2-digit number is 27. If we add 54 to the number, the new number obtained is a number formed by interchange of the digits. Find the number.

- A 39
- B 93
- C 63
- D 36

Answer: A

Explanation:

Let the unit's digit of the number be y and ten's digit be x

$$\Rightarrow \text{Number} = 10x + y$$

$$\text{Product of digits} = x \times y = 27 \text{ -----(i)}$$

$$\text{According to question, } \Rightarrow 10x + y + 54 = 10y + x$$

$$\Rightarrow 9y - 9x = 54$$

$$\Rightarrow y - x = \frac{54}{9} = 6 \text{ -----(ii)}$$

Solving equation (i) and (ii), we get : $x = 3$ and $y = 9$

\therefore Number = 39

\Rightarrow Ans - (A)

Question 71

If $2x - 3(2x - 2) > x - 1 < 2 + 2x$; then x can take which of the following values?

- A 2
- B -2
- C 4
- D -4

Answer: B

Explanation:

$$\text{Expression 1 : } x - 1 < 2 + 2x$$

$$\Rightarrow 2x - x > -1 - 2$$

$$\Rightarrow x > -3 \text{ -----(i)}$$

$$\text{Expression 2 : } 2x - 3(2x - 2) > x - 1$$

$$\Rightarrow -4x + 6 > x - 1$$

$$\Rightarrow 4x + x < 6 + 1$$

$$\Rightarrow x < \frac{7}{5} \text{ -----(ii)}$$

Combining inequalities (i) and (ii), we get : $-3 < x < \frac{7}{5}$

Thus, only value that x can take among the options = -2

\Rightarrow Ans - (B)

Question 72

Refer the below table and the following questions

	Number of Employees	Annual Salary (in lakhs)	Bonus as percent of annual salary
Manager	3	30	30%
Executive	8	16	20%
Trainee	4	2	20%

What is average bonus in rupees ?

A 5419995

B 160000

C 361333

D 126000

Answer: C

Explanation:

$$\text{Total bonus of managers (in lakh)} = 3 \times 30 \times \frac{30}{100} = 27 \text{ lakhs}$$

$$\text{Total bonus of executive (in lakh)} = 8 \times 16 \times \frac{20}{100} = 25.6 \text{ lakhs}$$

$$\text{Total bonus of trainee (in lakh)} = 4 \times 2 \times \frac{20}{100} = 1.6 \text{ lakhs}$$

$$\Rightarrow \text{Average bonus in rupees} = \frac{(27+25.6+1.6)}{(3+8+4)}$$

$$= \frac{54.2}{15} = 3.61333 \text{ lakhs} = \text{Rs. } 3,61,333$$

\Rightarrow Ans - (C)

SSC Stenographer Previous Papers (Latest Pattern)

Question 73

Read the below data table and answer the following questions

	2011	2012	2013	2014	2015
Company A	3000	5000	4000	5000	5000
Company B	1000	1000	1000	2000	2000
Company C	4000	2000	2000	2000	3000

For which of the following pairs of years the total exports from the three companies together are equal

- A 2011 & 2012
- B 2013 & 2015
- C 2011 & 2014
- D 2014 & 2015

Answer: A

Explanation:

Total exports from the three companies together in :

$$2011 = 3000 + 1000 + 4000 = 8000$$

$$2012 = 5000 + 1000 + 2000 = 8000$$

$$2013 = 4000 + 1000 + 2000 = 7000$$

$$2014 = 5000 + 2000 + 2000 = 9000$$

$$2015 = 5000 + 2000 + 3000 = 10000$$

Clearly, total exports in 2011 and 2012 are equal to 8000

=> Ans - (A)

Question 74

Read the below data table and answer the following questions

Year	Profit or Loss in crore
2011	-10
2012	5
2013	10
2014	-15
2015	-5

What was the total profit or loss of the company in last 5 years

- A Profit of Rs 15 crores
- B Loss of Rs 25 crores

- C Loss of Rs 15 crores
D Profit of Rs 25 crores

Answer: C

Explanation:

Total profit or loss in Rs. crore in last 5 years

$$= -10 + 5 + 10 - 15 - 5$$

$$= 15 - 30 = -15$$

Since, it is negative, thus loss of Rs. 15 crore

=> Ans - (C)

Question 75

Read the below data table and answer the following questions

India's Exports in 2015	Value in million US
Jewellery	675
Software	500
Cotton	525
Steel	575
Electronics	725

Jewellery was what percent of total exports

- A 25 percent
B 27.5 percent
C 22.5 percent
D 20 percent

Answer: C

Explanation:

Value in millions of Jewellery = 675

Total exports = 675 + 500 + 525 + 575 + 725 = 3000

$$\Rightarrow \% \text{ of Jewellery in total exports} = \frac{675}{3000} \times 100$$

$$= \frac{675}{30} = 22.5\%$$

=> Ans - (C)

SSC GD Constable Free Mock Test (Latest Pattern)

English

Instructions

For the following questions answer them individually

Question 76

Select the word with the correct spelling.

- A brooches
- B linoleam
- C limekilne
- D cherubick

Answer: A

SSC MTS Free Mock Test (Latest Pattern)

Question 77

In the following question, out of the four alternatives, select the alternative which best expresses the meaning of the idiom/phrase. An outline representing or bounding the shape or form of something.

- A tracery
- B contour
- C doodle
- D pattern

Answer: B

Question 78

In the following question, some part of the sentence may have errors. Find out which part of the sentence has an error and select the appropriate option. If a sentence is free from error, select 'No Error'.

Soon as he(A)/saw the policeman,(B)/ he ran away.(C)/No error(D)

- A A
- B B
- C C
- D D

Answer: A

Question 79

Rearrange the parts of the sentence in correct order.

We are told that its

P-Public Distribution System

Q-creating a functional

R-sole purpose is the noble goal of

A QRP

B RQP

C PRQ

D PQR

Answer: B

SSC CPO Free Mock Test (Latest Pattern)

Question 80

Select the word with the correct spelling.

A lammented

B scabbard

C ordenance

D synaptick

Answer: B

Question 81

In the following question, a sentence has been given in Direct/Indirect speech. Out of the four alternatives suggested, select the one, which best expresses the same sentence in Indirect/Direct speech.

Gokul said to Sumit, "Why did not you attend the meeting yesterday?"

A Gokul asked Sumit why he did not attend the meeting the day before.

B Gokul asked Sumit why he had not attended that meeting yesterday.

C Gokul asked Sumit why he had not attended the meeting the day before.

D Gokul asked Sumit why he did not attend that meeting yesterday.

Answer: C

Explanation:

'Yesterday' should be changed to 'the day before'. The given sentence is in the simple past tense. Therefore, the reported speech must be in the past perfect tense. Only option C satisfies these 2 conditions and hence, option C is the right answer.

Question 82

In the following question, out of the four alternatives, select the alternative which best expresses the meaning of the idiom/phrase.

to lose one's head

- A to lose respect within your community
- B to become complacent and gradually worsen your performance
- C to become confused or overly emotional about someone or something
- D to lose sense or start behaving like a lunatic

Answer: C

25 SSC CHSL MOCKS 149

Question 83

In the following question, out of the four alternatives, select the alternative which is the best substitute of the phrase.

A person famous and respected within a particular sphere.

- A eminent
- B obscure
- C despotic
- D imperative

Answer: A

Question 84

In the following question, a sentence has been given in Active/Passive voice. Out of four alternatives suggested, select the one, which best expresses the same sentence in Passive/Active voice.

We shall invite Suresh.

- A Suresh would be invited by us.
- B Suresh would have been invited by us.
- C Suresh will be invited by us.
- D Suresh will have been invited by us.

Answer: C

Question 85

Select the antonym of 'amenable'

- A responsive
- B pliable
- C docile
- D unsusceptible

Answer: D

SSC CHSL Important Questions and Answers (Download PDF)

Question 86

**Select the synonym of
to subsume**

- A to bate
- B to obviate
- C to preclude
- D to incorporate

Answer: D

Question 87

**Improve the bracketed part of the sentence
I prefer black coffee (over) cappuccino.**

- A rather than

- B to
- C instead of
- D no improvement

Answer: B

Question 88

In the following question, some part of the sentence may have errors. Find out which part of the sentence has an error and select the appropriate option. If a sentence is free from error, select 'No Error'.
You must not(A)/look down into(B)/parents' advice.(C)/No error(D)

- A A
- B B
- C C
- D D

Answer: B

SSC CHSL Free Videos (Youtube)

Question 89

Improve the bracketed part of the sentence
The priest agreed (to answer on) questions on theology.

- A to answer
- B for answering
- C to answer for
- D no improvement

Answer: A

Question 90

Select the synonym of
to lash

- A to endear

- B to fondle
- C to chastise
- D to snuggle

Answer: C

Question 91

In the following question, the sentence given with blank to be filled in with an appropriate word. Select the correct alternative out of the four and indicate it by selecting the appropriate option.

Arun's financial _____ has helped him earn a fortune on the stock market.

- A dexterity
- B readiness
- C expertise
- D knack

Answer: C

SSC CHSL Syllabus

Question 92

In the following question, sentence given with blank is to be filled in with an appropriate word. Select the correct alternative out of the four and indicate it by selecting the appropriate option.

Fuel suppliers will _____ the national oil shortage by raising prices to increase their bottom lines.

- A use
- B misuse
- C venture
- D exploit

Answer: D

Question 93

Select the antonym of to muster

- A to convocate

- B to rally
- C to estrange
- D to aggregate

Answer: C

Question 94

In the following question, out of the four alternatives, select the alternative which best expresses the meaning of the idiom/phrase.

head over heels

- A to think with head instead of heart
- B to run away from an unpleasant situation
- C to take a nasty fall
- D to be madly in love

Answer: D

SSC CHSL Expected Cutt off

Question 95

Rearrange the parts of the sentence in correct order.

So, increasingly,

P-paying to provide revenues Q-for the Central government R-the poor have been

- A RPQ
- B RQP
- C PQR
- D QPR

Answer: A

Question 96

In the following passage, some of the words have been left out. Read the passage carefully and select the correct answer for the given blank out of the four alternatives.

The scenario _____ dramatically today. We have the _____ of powerful Internet monopolies that are much bigger _____ the telcos. Not surprisingly, these companies now see the _____ of monopoly. They would like to combine with telcos to create monopolies for their platforms, ensuring that they control the future of the Internet and freeze their competition _____.

The scenario _____ dramatically today.

- A change
- B had changed
- C has changed
- D changing

Answer: C

Question 97

In the following passage, some of the words have been left out. Read the passage carefully and select the correct answer for the given blank out of the four alternatives.

The scenario _____ dramatically today. We have the _____ of powerful Internet monopolies that are much bigger _____ the telcos. Not surprisingly, these companies now see the _____ of monopoly. They would like to combine with telcos to create monopolies for their platforms, ensuring that they control the future of the Internet and freeze their competition _____.

We have the _____ of powerful Internet

- A emerging
- B emerge
- C emergence
- D emergency

Answer: C

SSC CHSL Study Material

Question 98

In the following passage, some of the words have been left out. Read the passage carefully and select the correct answer for the given blank out of the four alternatives.

The scenario _____ dramatically today. We have the _____ of powerful Internet monopolies that are much bigger _____ the telcos. Not surprisingly, these companies now see the _____ of monopoly. They would like to combine with telcos to create monopolies for their platforms, ensuring that they control the future of the Internet and freeze their competition _____ .
monopolies that are much bigger _____ the telcos

- A then
- B than
- C to
- D of

Answer: B

Question 99

In the following passage, some of the words have been left out. Read the passage carefully and select the correct answer for the given blank out of the four alternatives.

The scenario _____ dramatically today. We have the _____ of powerful Internet monopolies that are much bigger _____ the telcos. Not surprisingly, these companies now see the _____ of monopoly. They would like to combine with telcos to create monopolies for their platforms, ensuring that they control the future of the Internet and freeze their competition _____.
Not surprisingly, these companies now see the _____ of monopoly.

- A virtues
- B respectability
- C trust
- D innocence

Answer: A

Question 100

In the following passage, some of the words have been left out. Read the passage carefully and select the correct answer for the given blank out of the four alternatives.

The scenario _____ dramatically today. We have the _____ of powerful Internet monopolies that are much bigger _____ the telcos. Not surprisingly, these companies now see the _____ of monopoly. They would like to combine with telcos to create monopolies for their platforms, ensuring that they control the future of the Internet and freeze their competition _____.
future of the Internet and freeze their competition _____

- A off
- B about
- C in
- D out

Answer: D

SSC CHSL Free App

SSC CHSL Free Mock Test

SSC CHSL Previous Papers (DOWNLOAD PDF)

SSC CGL MTS Previous Papers (DOWNLOAD PDF)

SSC CGL GD Constable Previous Papers (DOWNLOAD PDF)

SSC Stenographer Previous Papers (DOWNLOAD PDF)

SSC CGL Previous Papers (DOWNLOAD PDF)

SSC CGL Free Mock Test (Latest Pattern)

SSC Stenographer Previous Papers (Latest Pattern)

SSC GD Constable Free Mock Test (Latest Pattern)

SSC MTS Free Mock Test (Latest Pattern)

SSC CPO Free Mock Test (Latest Pattern)

25 SSC CHSL MOCKS 149

SSC CHSL Important Questions and Answers (Download PDF)

SSC CHSL Free Videos (Youtube)

SSC CHSL Syllabus

SSC CHSL Expected Cutt off

SSC CHSL Study Material

SSC CHSL Free App