



RRB Group-D 22nd Sep 2018-shift -3

All rights reserved. No part of this publication may be reproduced, distributed, or transmitted in any form or by any means, electronic, mechanical, photocopying, recording or otherwise, or stored in any retrieval system of any nature without the permission of cracku.in, application for which shall be made to support@cracku.in

RRB Group-D 22nd Sep 2018-shift -3

Instructions

For the following questions answer them individually

Question 1

Who is the recipient of the Prime Minister's Award for outstanding contribution to promotion and development of yoga in 2018?

- A Tirumalai Krishnamacharya
- B K. Pattabhi Jois
- C B. K. S. Iyengar
- D Vishwas Mandlik

Answer: D

RRB Group-D Previous Papers (download PDF)

Question 2

What is the maximum amount of work done in 10 s by a 20 kW engine?

- A 20 KJ
- B 200 KJ
- C 25 KJ
- D 2 KJ

Answer: B

Question 3

Arjun started a task and left it after working for 2 days. Then, Bharath was called and he completed the task in 9 days. If Arjun alone had worked for 3 days, Bharath alone would have finished the remaining work in 6 days. In how many days can Aijun alone complete the task?

- A 8 days
- B 12 days
- C 5 days
- D 10 days

Answer: C

Question 4

The mean of the 6 smallest numbers from a group is 15 while the mean of all the 14 members of the group taken together is 17. What is the mean of the 8 largest numbers?

- A 18.25
- B 17.75
- C 18.75
- D 18.50

Answer: D

20 RRB Group-D Mocks - Just Rs. 149

Question 5

The time duration that would elapse between 2:38 p.m. of 11 May 2023 and 2:29 p.m. of 13 May 2024 is:

- A 368 days 9 minutes
- B 367 days 9 minutes
- C 366 days 23 hours 51 minutes
- D 367 days 23 hours 51 minutes

Answer: D

Question 6

Consider the given statement to be true even if it seems to be at variance with the commonly known facts and decide which of the given conclusions logically follow(s) from the statement.

Statement:

The grass is always greener on the other side of the fence.

Conclusions:

- I. Humans are never completely satisfied with where they are in life.
- II. Humans see their own flaws more vividly and don't consider the possibility that they may have the greener side'.

- A Only conclusion I follows.
- B Both conclusions I and II follow.
- C Only conclusion II follows.
- D Neither conclusion I nor II follows.

Answer: A

Question 7

Who is the first Pakistani to score a double century in ODIs?

- A Sarfraz Ahmed
- B Saeed Anwar
- C Fakhar Zaman
- D Imam-In-Haq

Answer: C

RRB Group-D Free Mock Tests

Question 8

Which of the following former or current Chief Ministers of India had earlier served as a Priest of a temple?

- A Yogi Adityanath
- B Vijay Rupani

- C Mayawati
- D Manohar Panikar

Answer: A

Question 9

Pemba Island is famous for the cultivation of

- A Coffee
- B Rice
- C Wheat
- D Cloves

Answer: D

Question 10

The enzyme present in the pancreatic juice, converts proteins to amino acids.

- A Pepsin
- B Lipase
- C Trypsin
- D Amylase

Answer: C

770 Mocks (Cracku Pass) - Just Rs. 199

Question 11

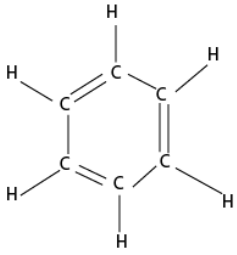
Gandhiji launched the Non-Cooperation Movement in a small village called Champaran. In which current Indian state is Champaran located?

- A Maharashtra
- B West Bengal
- C Gujarat
- D Bihar

Answer: D

Question 12

What is the name of the compound shown in the below structure?



- A Cyclohexane
- B Benzene
- C Cycloheptane
- D Naphthalene

Answer: B

Question 13

What will be the acute angle between the hour hand and the minute hand at 6:25 p.m.?

- A 30°
- B 40.5°
- C 42.5°
- D 35.5°

Answer: C

Daily Free Online GK tests

Question 14

The first three terms of a proportion are 3, 5 and 21, respectively. Find its fourth term.

- A 25
- B 30
- C 35
- D 20

Answer: C

Question 15

Linen is related to Cloth in the same way as Gold is related to:

- A Yellow
- B Metal
- C Jeweler

D Hard

Answer: B

Question 16

The angle of depression of the foot of a building from the top of a tower $32\sqrt{3}$ m high is 60° . How far away from the building is the tower?

A 32 m

B 16 m

C $16\sqrt{3}$ m

D $32\sqrt{3}$ m

Answer: A

100+ Free Online GK Tests

Question 17

In $\triangle ABC$, D and E are points on AB and AC respectively such that DE is parallel to BC. If AD = 2 cm, BD = 3 cm, ext-ADE then $\frac{ar(\triangle ADE)}{ar(\triangle ABC)}$, is:

A $\frac{4}{9}$

B $\frac{16}{81}$

C $\frac{4}{25}$

D $\frac{2}{5}$

Answer: C

Question 18

What will be the unit digit in 3^{31} ?

A 7

B 1

C 9

D 3

Answer: A

Question 19

What is least number added to 4042 to make it perfect square?

A 64

B 41

C 58

D 54

Answer: D

Daily Free RRB Online Test

Question 20

Read the given statement(s) and conclusions carefully and select which of the conclusions logically follow(s) from the statement(s).

Statement:

- All brooms are plastic.
- All plastics are handles.

Conclusions:

1. All brooms are handles.
2. No plastic is a broom.

- A All conclusions follow.
- B Only conclusion 2 follow.
- C Only conclusion 1 follows.
- D Neither 1 nor 2 follows.

Answer: C

Question 21

The consists of relatively unspecialised cells with thin cell wall. (a-delete)

- A phloem
- B sclerenchyma
- C parenchyma
- D collenchyma

Answer: C

Question 22

Consider the given statement and decide which of the following assumptions is/are implicit in the statement.

Statement:

The headmistress announced, "From now on, every Wednesday, a student from Class XI should come forward to recite poetry in the Assembly".

Assumptions:

- I. The headmistress wants children to develop interest in English.
- II. The headmistress wants children to get rid of stage fear.

- A Only II is implicit.
- B Both I and II are implicit.
- C Only I is implicit.
- D Neither I nor II is implicit.

Answer: A

RRB Free Videos (You Tube Channel)

Question 23

As per RBI Annual Report 2016-17, what is the estimated value of demonetised banknotes received?

- A ₹ 19.48 lakh crore
- B ₹ 12.25 lakh crore
- C ₹ 13.35 lakh crore
- D ₹ 15.28 lakh crore

Answer: D

Question 24

Who won the BCCI Lifetime Achievement Award for Women at the BCCI Annual Awards held in Bengaluni in March 2017?

- A Shubhangi Kulkarni
- B Diana Edulji
- C Shanta Rangaswamy
- D Purnima Rau

Answer: C

Question 25

Choose the one that does NOT belong to the group.

- A Cantaloupe
- B Lily
- C Lotus
- D Jasmine

Answer: A

RRB General Science Notes (Download Pdf)

Question 26

..... is not a sexually transmitted disease.

- A Candidiasis
- B Syphilis
- C Gonorrhoea
- D Warts

Answer: A

Question 27

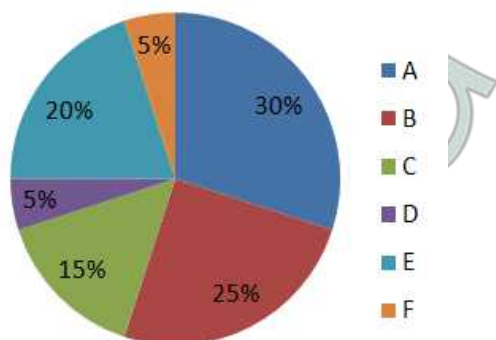
If no force is applied to a moving object, then it will stop due to:

- A Tension
- B Momentum
- C Impulse
- D Friction

Answer: D

Question 28

The given pie chart shows information about Non-Performing Assets (NPA) processed by the various banks of India till December 2017.



If the total NPAs under all the banks are worth ₹ 300 lakh crores, then NPAs worth how much (in ₹ lakh crores) does Bank 'B' contain till December 2017?

- A 50
- B 75
- C 25
- D 100

Answer: B

RRB NTPC Previous Papers (Download PDF)

Question 29

Find the smallest four-digit number that is divisible by 47.

- A 1200
- B 1025
- C 1360
- D 1034

Answer: D

Question 30

When washing soda reacts with hydrochloric acid gas is evolved.

- A Oxygen
- B Carbon monoxide
- C Carbon dioxide
- D Hydrogen

Answer: C

Question 31

Find the next term in the following series.

4A, 7B, 12D, 19G, ?

- A 28K
- B 28P
- C 26U
- D 27G

Answer: A

RRB GK Material (Download Pdf)

Question 32

A square field of area 31684 sq. metres is to be enclosed with wire placed at heights 1,2,3,4 metres above the ground. What length of the wire will be required, if the length required for each wire is 5% greater than the perimeter of the field?

- A 2099 m
- B 2909 m
- C 2990.4 m
- D 2090 m

Answer: C

Question 33

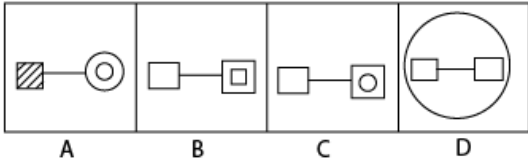
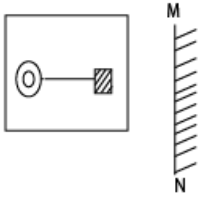
If the speed of a cycle become two times, then the kinetic energy becomes

- A 2 times
- B 4 times
- C 8 times
- D 16 times

Answer: B

Question 34

Choose the mirror image for the following figure when the mirror is kept at the MN line.



A C

B A

C B

D D

Answer: B

Get Free Study Material & Updates - Whatsapp "Updates" to 7661025557

Question 35

Avogadro number is represented by

A A_v

B AN

C N^o

D N_o

Answer: D

Question 36

..... is NOT an actinoid.

A Terbium

B Fermium

C Nobelium

D Thorium

Answer: A

Question 37

'Kalamkari', a Painting form recently seen in the news belongs to which Indian state?

- A Andhra Pradesh
- B Tamil nadu
- C Maharashtra
- D Rajasthan

Answer: A

Latest Job Updates on Telegram - Join here

Question 38

$x = \frac{\sqrt{3}+1}{2}$; find $4x^3 + 2x^2 - 8x + 7$

- A 10
- B 4
- C 8
- D 6

Answer: A

Question 39

An element has an atomic number of 20 with which of the following elements will it show similar chemical properties.

- A Be(4)
- B Fe(26)
- C Sc(21)
- D B(5)

Answer: A

Question 40

Name the company that has adopted the maintenance of Charniinar in Hyderabad as part of the Swatch Bharat Mission.

- A Infosys
- B NTPC
- C ONGC
- D L&T

Answer: B

RRB Group-D Previous Papers (download PDF)

Question 41

..... is the only non-metal present in Group 1 of the Modern Periodic Table.

- A Cobalt
- B Rubidium
- C Potassium
- D Hydrogen

Answer: D

Question 42

A body of mass 30 kg moves with an initial speed of 20 m/s. If a retarding force of 60 N is applied. how long does the body take to stop?

- A -10 s
- B 10 s
- C 9 s
- D 0.10 s

Answer: B

Question 43

What is the next term in the following series?
3, 2, 13, 12, 23, 22,

- A 33
- B 32
- C 21
- D 29

Answer: A

20 RRB Group-D Mocks - Just Rs. 149

Question 44

Select the option figure that will complete the series of question figures.

Problem figure:

$\odot \infty \textcircled{R} \asymp$	$\textcircled{R} \odot \infty \asymp$	$\infty \textcircled{R} \odot \asymp$?
---------------------------------------	---------------------------------------	---------------------------------------	---

Answer figures:

A	B	C	D
$\infty \textcircled{R} \odot \asymp$	$\textcircled{R} \infty \odot \asymp$	$\odot \infty \textcircled{R} \asymp$	$\infty \textcircled{R} \odot \leq \leq$

- A A

B D

C C

D B

Answer: C

Question 45

Echoes are heard due to the phenomenon of

- A Reflection of sound waves
- B Resonance
- C Interference of sound waves
- D Refraction of sound waves

Answer: A

Question 46

A is a unisexual flower.

- A Gulinohar
- B Hibiscus
- C Mustard
- D Papaya

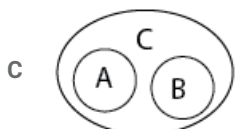
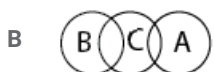
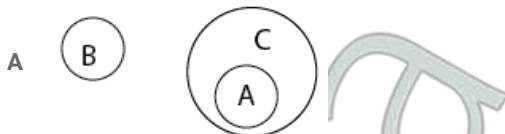
Answer: D

RRB Group-D Free Mock Tests

Question 47

Which of the following correctly represents the relationship between:

- A) Vegetation
- B) Jupiter
- C) Earth



Answer: A

Question 48

Who has been awarded "Bharat Gaurav Award" - 2017 in Science and Technology category?

- A Arun K. Tripathi
- B Anil K. Tripathi
- C Arun K. Tiwari
- D Anil K. Tiwari

Answer: B

Question 49

Read the given statement(s) and conclusions carefully and select which of the conclusions logically follow(s) from the statement(s).

Statement:

- Some pins are sharp.
- All Sharp are metals.

Conclusions:

1. All metals are pins.
2. Some metals are sharp.

- A No conclusion follow
- B Only conclusion 2 follows.
- C Only conclusion 1 follows.
- D All the conclusions follow.

Answer: B

770 Mocks (Cracku Pass) - Just Rs. 199

Question 50

A molecule of Oxygen has

- A a double covalent bond
- B an electrovalent bond
- C a triple covalent bond
- D a single covalent bond

Answer: A

Question 51

If the sides of a square are increased by 30%, find the % increase in its area.

- A 79%
- B 68%
- C 69%

D 65%

Answer: C

Question 52

When phenolphthalein is added to vinegar, the solution becomes

- A blue
- B red
- C pink
- D colourless

Answer: D

Daily Free Online GK tests

Question 53

If an object moves with a velocity of 60 m/s, how long will it take to travel 480 m?

- A 7 s
- B 8 s
- C 0.80 s
- D 80 s

Answer: B

Question 54

Two football teams. Team A and Team B. played in a tournament and scored the following number of goals over 4 4 matches. What is their average score?

Games	Goals by Team A	Goals by Team B
Game 1	2	3
Game 2	1	2
Game 3	1	2
Game 4	4	5

- A Team A : 2, Team B : 4
- B Team A : 2, Team B : 3
- C Team A : 3, Team B : 2
- D Team A : 1, Team B : 3

Answer: B

Question 55

Who among the following is the author of the book 'Indira Gandhi – A Life in Nature'?

- A Jairam Ramesh

- B Natwar Singh
- C Sonia Gandhi
- D Priyanka Vadra

Answer: A

100+ Free Online GK Tests

Question 56

Read the given question and decide which of the following statements is/are sufficient to answer the question.

What is the number of students in the class?

Statements:

- 1) The class contains 10th class students.
- 2) The class contains 6 girls and 8 boys.

- A Only 2 is sufficient.
- B Neither 1 nor 2 is sufficient.
- C Only 1 is sufficient.
- D Either 1 or 2 is sufficient.

Answer: A

Question 57




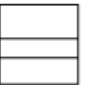
A 156.5 m long train, travelling at 57 km/hr. crosses a platform in 39 seconds. What is the length of the platform?

- A 613.5 m
- B 476 m
- C 586 m
- D 461 m

Answer: D

Question 58

Find the Odd one out.

A	B	C	D
			

- A D
- B C
- C B
- D A

Answer: C

Daily Free RRB Online Test

Question 59

Which of the option figures bears the closest resemblance to the question figure?

Problem figure:



Answer figures:

A	B	C	D

A C

B A

C D

D B

Answer: A

Question 60

John is facing in the west direction during the morning yoga. He turns 90° clockwise and then 270° anticlockwise. In which direction is he facing now?

A East

B North

C South

D West

Answer: A

Question 61

Name the director of the blockbuster movie 'Bahubali'.

A Madhur Bhandarkar

B S.S.Rajamouli

C Prabhu Deva

D Karan Johar

Answer: B

RRB Free Videos (You Tube Channel)

Question 62

The rate of change of momentum of a body is directly proportional to the

- A Applied potential energy
- B Applied force
- C Applied displacement
- D Applied pressure

Answer: B

Question 63

Select the one that does not belong to the below group.

- A. Aluminum
- B. Iron
- C. Bakelite
- D. Brass

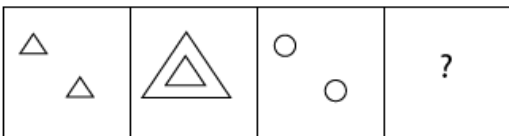
- A D
- B A
- C B
- D C

Answer: D

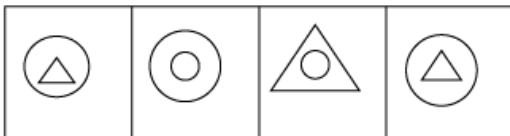
Question 64

Which answer figure will come next in the given problem figure series?

Problem figures:



Answer figures:



- A D
- B B
- C A
- D C

Answer: B

Question 65

The element of the Lanthanide series having the atomic number 58 is

- A Cerium
- B Lanthanum
- C Thorium
- D Strontium

Answer: A

Question 66

Which of the following factors does NOT affect the resistance of a conductor?

- A Pressure
- B Material
- C Area of cross section
- D Length

Answer: A

Question 67

Read the given statement(s) and conclusions carefully and select which of the conclusions logically follow(s) from the statement(s).

Statement:

- All flowers are petals.
- All petals are soft.

Conclusions:

1. All flowers are soft.
2. Some soft are petals.

- A Only conclusion 2 follows.
- B Neither conclusion follows.
- C Only conclusion 1 follows.
- D Both conclusions follow.

Answer: D

RRB NTPC Previous Papers (Download PDF)

Question 68

Satheesh reads a novel in 6 days. On each day, he reads it for $1\frac{3}{4}$ hours. How many hours does he take to complete the novel?

- A $7\frac{1}{2}$ hours
- B $10\frac{1}{2}$ hours
- C $11\frac{1}{2}$ hours

D $9\frac{1}{2}$ hours

Answer: B

Question 69

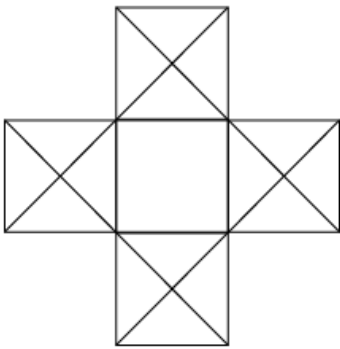
Which scheme has been launched by the union government for promoting solar farming?

- A Krishi Urja Suraksha evam Utthaan Mahaabhiyan
- B Kisan Urja Suraksha evam Utthaan Mahaabhiyan
- C Kisan Urja Suraksha evam Unnati Mahaabhiyan
- D Kusum Uija Suraksha evam Utthaan Mahaabhiyan

Answer: B

Question 70

How many triangles are there in the following figure?



- A 32
- B 30
- C 44
- D 42

Answer: E

RRB GK Material (Download Pdf)

Question 71

Priyamvada's present age is five years more than twice the age of his cousin Ritika. Sixteen years from now 1 Priyamvada's age will be 150% of that of Ritika's. What is Priyamvada's present age (in years)?

- A 23
- B 33
- C 17
- D 26

Answer: C

Question 72

The interest on ₹ 1,250 for 15 years at the rate of 1.6% simple interest per annum will be:

- A ₹ 350
- B ₹ 375
- C ₹ 360
- D ₹ 300

Answer: D

Question 73

Find the next letter-pair in the following series.

BT, EQ, HN, ?

- A GC
- B KZ
- C KG
- D KK

Answer: D

Get Free Study Material & Updates - Whatsapp "Updates" to 7661025557

Question 74

With reference to retail payments and settlement systems, what is the full form of NPCI?

- A National Payment Consortium of India
- B National Payments Corporation of India
- C National Piracy Council of India
- D National Protection Council of India

Answer: B

Question 75

Two horses cover the same distance at the rate of 10 km/hr and 15 km/hr. respectively. The distance travelled when one takes 12 minutes longer than the other is:

- A 2 km
- B 4 km
- C 6 km
- D 8 km

Answer: C

Question 76

Which pattern will the given transparent sheet resemble when it is folded at the dotted line?



A	B	C	D

A C

B D

C B

D A

Answer: A

[Latest Job Updates on Telegram - Join here](#)

Question 77

In animal cells, epithelium forms the inner lining of the kidney to provide mechanical support.

A Glandular

B Cuboidal

C Columnar

D Squamous

Answer: B

Question 78

Where is the Kandaleru Dam located?

A Kerala

B Tamil Nadu

C Karnataka

D Andhra Pradesh

Answer: D

Question 79

If, in a certain code language, LET is coded as 12520, then how will WIN be coded in the same language?

A 23915

B 21914

C 23914

D 24915

Answer: C

RRB Group-D Previous Papers (download PDF)

Question 80

Tejal has a 40% stake and Ashank has a 60% stake in a partnership firm. On an average, if Tejal makes a ₹ 10,00,000 profit a year, how much does Ashank make?

A ₹ 24 lakh

B ₹ 15 lakh

C ₹ 25 lakh

D ₹ 30 lakh

Answer: B

Question 81

The initial ratio of sugar and flour in a dough was 4 : 7. With 22 kg of the dough Justine added more flour to make the sugar to flour ratio 2 : 5. How much flour did Justine later add?

A 4 kg

B 6 kg

C 8 kg

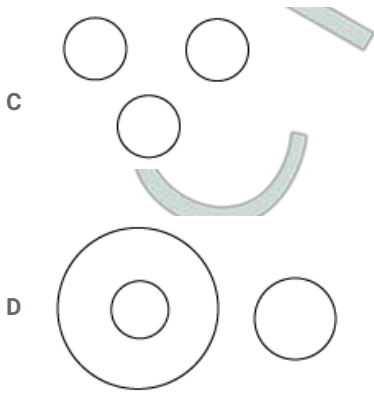
D 2 kg

Answer: B

Question 82

Choose the most suitable Venn diagram for the following words.
Metal, Platinum, Oxygen





Answer: D

20 RRB Group-D Mocks - Just Rs. 149

Question 83

How much less is 28.8 km than 42.3 km?

- A 13.5 km
- B 1.35 km
- C 1.25 km
- D 12.5 km

Answer: A

Question 84

Which of the following numbers is irrational?

- A $\sqrt{16}$
- B $\sqrt[3]{1}$
- C $\sqrt[4]{4}$
- D $\sqrt[3]{8}$

Answer: C

Question 85

Sound produced by a radio increases by

- A increasing the frequency
- B increasing the amplitude
- C increasing the wavelength
- D increasing the pitch

Answer: B

RRB Group-D Free Mock Tests

Question 86

Given is a statement followed by two assumptions numbered I and II. Consider the statement and the following assumptions and decide which of the assumptions is/are implicit in the statement.

Statement:

The safety, quality and nutritional value of the food we eat is of fundamental importance to our health and well-being.

Assumptions:

- I. Food safety encompasses not only the prevention of gastro-intestinal illnesses caused by bacteria and viruses, but also the avoidance of harm from chemical contamination and the ingestion of unwanted physical contaminants.
II. Monitoring and enforcement of food safety requirements should be carried out by a range of professionally qualified officers.

- A Neither assumption I nor II is implicit.
B Both assumptions I and II are implicit.
C Only assumption II is implicit.
D Only assumption I is implicit.

Answer: D

Question 87

$$92 - [71 + \{4 - (5 - (4 - 2))\}] = ?$$

- A 12
B 21
C 15
D 20

Answer: D

Question 88

As of 2018, who is the CEO of NITI Aayog?

- A Amitabh Kant
B Narendra Modi
C Arvind Panagariya
D Arvind Subramanian

Answer: A

770 Mocks (Cracku Pass) - Just Rs. 199

Question 89

Find the energy possessed by a stationary object at a height of 6 m and with a mass of 50 kg. ($g = 10 \text{ m/s}^2$)

- A $3000J$
B 3×10^4J
C $300J$
D $30J$

Answer: A

Question 90

In December 2017, with which country did india sign a pact for socio-economic development of Rakhine state?

- A Japan
- B China
- C Maldives
- D Myanmar

Answer: D

Question 91

Srinivas is four times as old as his daughter. Five years ago, Srinivas was nine times as old as his daughter was at that time. His daughter's present age is:

- A 10 years
- B 8 years
- C 6 years
- D 5 years

Answer: B

Daily Free Online GK tests

Question 92

..... have similar chemical properties but different atomic masses.

- A Isomers
- B Isotopes
- C Actinides
- D Isobars

Answer: B

Question 93

In which year was the regulation passed to ban the practice of Sati?

- A 1840
- B 1852
- C 1837
- D 1829

Answer: D

Question 94

Name the country which won the 2017 Women's Hockey Asia Cup title?

- A Nepal
- B India
- C Bangladesh
- D Pakistan

Answer: B

100+ Free Online GK Tests

Question 95

Consider the given statement(s) and decide which of the given assumption(s) is/are implicit in the statement.

Statement:

Students should be encouraged to participate in debates.

Assumptions:

- I. They will learn convincing skills.
- II. Their communication skills will be enhanced.

- A Only II is implicit
- B Only I is implicit
- C Both I and II are implicit
- D Neither I nor II is implicit

Answer: C

Question 96

Who among the following has been awarded Crystal award on 22nd January 2018 at WEF, World Economic Forum Annual Summit held at Davos?

- A Sundar Pichai
- B Raghuram Rajan
- C Shah Rukh Khan
- D Narendra Modi

Answer: C

Question 97

Based on the arithmetic reasoning, find the number that is different from other options in the given list of numbers.

- A 125
- B 100
- C 343
- D 216

Answer: B

Daily Free RRB Online Test

Question 98

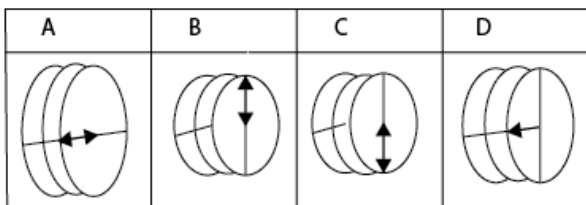
Which of the following statements regarding a rectangle is correct?

- A Its diagonals are equal and divide each other equally at right angle.
- B Its diagonals are perpendicular to each other
- C Its diagonals are equal and divide each other equally.
- D Its diagonals divide each other equally at right angle.

Answer: C

Question 99

Find the odd one out.



- A D
- B B
- C C
- D A

Answer: A

Question 100

The mean of 100 observations is 50. If one observation which was 60 is replaced by 160, the resulting mean will be:

- A 50.5
- B 51
- C 52
- D 51.5

Answer: B

[RRB Free Videos \(You Tube Channel\)](#)

[RRB Group-D Previous Papers \(download PDF\)](#)

20 RRB Group-D Mocks - Just Rs. 149

RRB Group-D Free Mock Tests

770 Mocks (Cracku Pass) - Just Rs. 199

Daily Free Online GK tests

100+ Free Online GK Tests

Daily Free RRB Online Test

RRB Free Videos (You Tube Channel)

RRB General Science Notes (Download Pdf)

RRB NTPC Previous Papers (Download PDF)

RRB GK Material (Download Pdf)

Get Free Study Material & Updates - Whatsapp "Updates" to 7661025557

Latest Job Updates on Telegram - Join here