

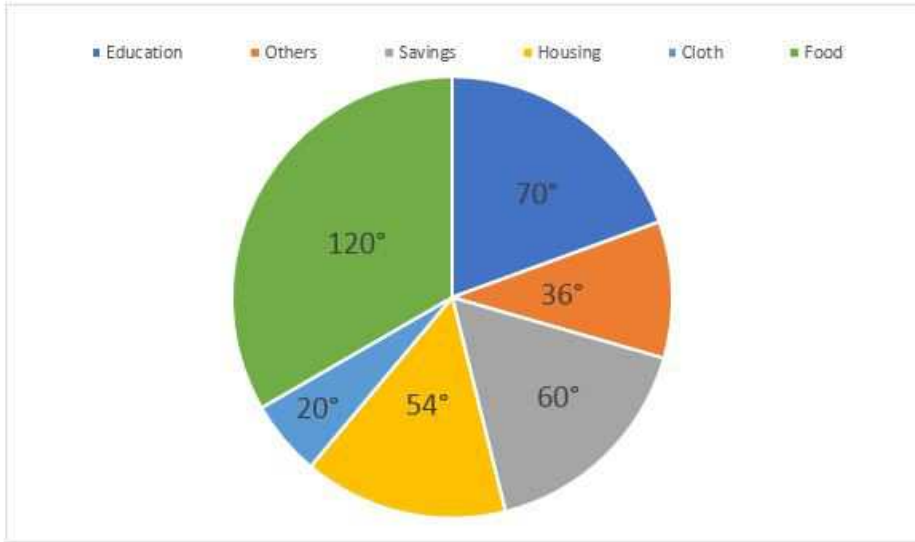


Top-20 SSC CGL Data Interpretation Questions

All rights reserved. No part of this publication may be reproduced, distributed, or transmitted in any form or by any means, electronic, mechanical, photocopying, recording or otherwise, or stored in any retrieval system of any nature without the permission of cracku.in, application for which shall be made to support@cracku.in

Instructions

The pie-chart given below shows expenditure incurred by a family on various items and their savings. Study the chart and answer the questions based on the pie-chart



Question 1

If the expenditure on education is 1600 more than that on housing, then the expenditure on food is :

- A 12000
- B 6000
- C 3333
- D 7000

Answer: A

Explanation:

Let total income = $360x$

$$\text{Expenditure on education} = \frac{70}{360} * 360x = 70x$$

$$\text{Expenditure on housing} = \frac{54}{360} * 360x = 54x$$

$$\Rightarrow \text{Required difference} = 70x - 54x = 1600$$

$$\Rightarrow x = 100$$

$$\text{Expenditure on food} = \frac{120}{360} * 360x = 120x$$

$$\Rightarrow 120 * 100 = 12000$$

Question 2

If the monthly income is 36000, then the yearly savings is :

- A 70000
- B 72000
- C 60000
- D 74000

Answer: B

Explanation:

Monthly income = 36,000

Monthly savings = $\frac{60}{360} * 36000 = 6,000$

=> Yearly savings = $12 * 6000 = 72,000$

Instructions

For the following questions answer them individually

Question 3

Among the equations $x + 2y + 9 = 0$; $5x - 4 = 0$; $2y - 13 = 0$; $2x - 3y = 0$, the equation of the straight line passing through origin is

A $2x - 3y = 0$

B $x + 2y + 9 = 0$

C $5x - 4 = 0$

D $2y - 13 = 0$

Answer: A

Explanation:

For a straight line to pass through origin, both of its x & y coordinates should be '0'.

(A) : $2x - 3y = 0$

=> If $x = y = 0$, then L.H.S. = $0 =$ R.H.S.

=> It passes through origin

(B) : $x + 2y + 9 = 0$

=> If $x = y = 0$, then L.H.S. = $9 \neq$ R.H.S. = 0

=> It does not pass through origin

(C) : $5x - 4 = 0$

=> If $x = 0$, then L.H.S. = $-4 \neq$ R.H.S. = 0

=> It does not pass through origin

(D) : $2y - 13 = 0$

=> If $y = 0$, then L.H.S. = $-13 \neq$ R.H.S. = 0

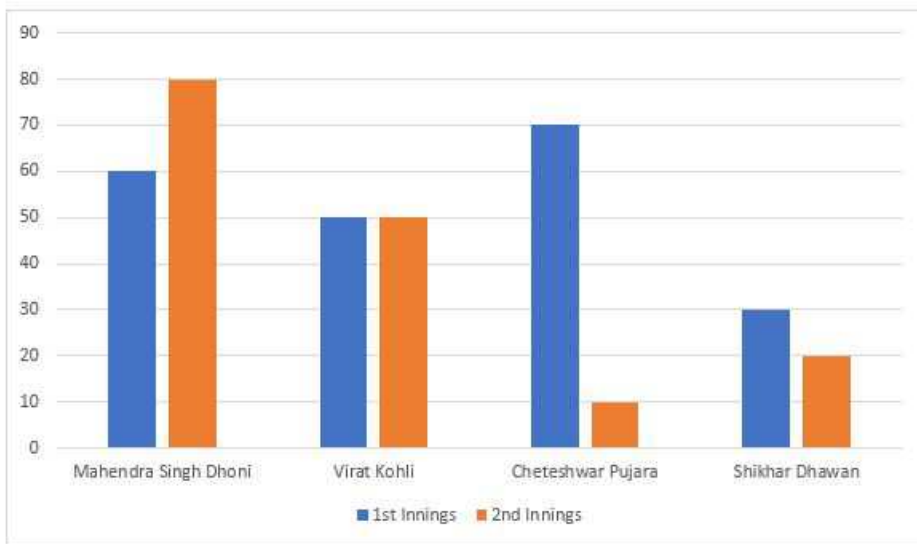
=> It does not pass through origin

Ans - (A)

125 SSC CGL Mocks for just Rs. 199

Instructions

Given here is a multiple bar diagram of the scores of four players in two innings. Study the diagram and answer the questions:



Question 4

The average runs of two innings of the player who scored highest in average are :

- A 70
- B 80
- C 85
- D 75

Answer: A

Explanation:

Runs scored in 1st and 2nd innings respectively :

$$\text{Dhoni} = 60 + 80 = 140 \text{ [MAX]}$$

$$\text{Virat} = 50 + 50 = 100$$

$$\text{Pujara} = 70 + 10 = 80$$

$$\text{Dhawan} = 30 + 20 = 50$$

Since, Dhoni scored the maximum in both innings

$$\Rightarrow \text{Average} = 140 / 2 = 70$$

Instructions

For the following questions answer them individually

Question 5

60 students were asked to choose their favourite sport.

Their distribution is as follows :

Football - 15

Cricket - 12

Swimming - 12

Basketball - 11

Athletics - 10

The data is illustrated in a Pie Chart. What angle should be used for football ?

- A 15°
- B 60°

C 90°

D 180°

Answer: C

Explanation:

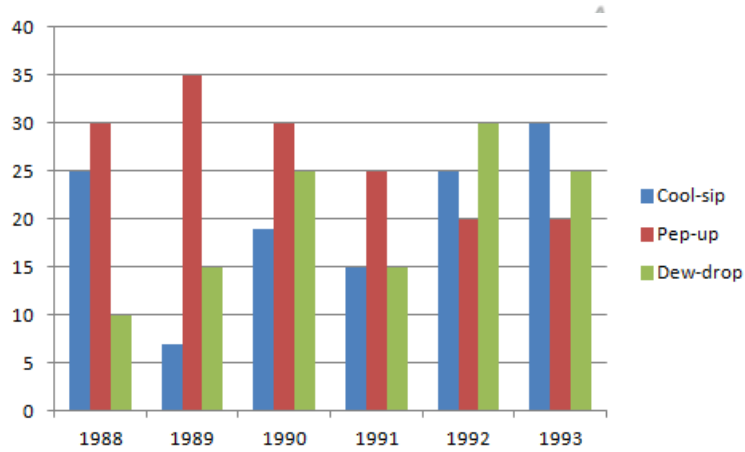
No. of students who like football = 15

Total students = 60

Angle used for football = $\frac{15}{60} * 360 = 90^\circ$

Instructions

Study the graph and answer the questions.



Question 6

In which year the sale of cool-sip is minimum ?

A 1990

B 1992

C 1993

D None of the above

Answer: D

Explanation:

Sales of cool sip in :

1988 - 25

1989 - 6 [MIN]

1990 - 19

1991 - 15

1992 - 25

1993 - 30

=> Sales of cool sip is minimum in 1989

Ans - (D)

SSC CGL Free Mock Test (Latest Pattern)

Question 7

In case of which soft drink was the average annual sale maximum during the period 1988-1993 ?

- A Pep-up only
- B Pep-up and Dew-drop
- C Cool-sip only
- D Cool-sip and Pep-up

Answer: A

Explanation:

Sales of cool sip from 1988 to 1993 = $25+6+19+15+25+30 = 120$

=> Average sales = $120/6 = 20$

Sales of pep up = $30+35+30+25+20+20 = 160$

=> Average sales = $160/6 = 26.67$ [MAX]

Sales of dew drop = $10+15+25+15+30+25 = 120$

=> Average sales = $120/6 = 20$

Average sales of pep up is maximum

Question 8

What was the approximate percent drop in the sale of Pep-up in 1990 over its sale in 1989 ?

- A 5
- B 14
- C 12
- D 20

Answer: B

Explanation:

Sales of pep up in 1989 = 35

Sales of pep up in 1990 = 30

=> % decrease = $\frac{35-30}{35} * 100 = 14.28\%$
= ~14%

Question 9

What was the approximate percent increase in sales of Cool-sip in 1990 over its sales in 1989 ?

- A 100
- B 217
- C 171
- D 150

Answer: B

Explanation:

Sales of cool sip in 1989 = 6

Sales of cool sip in 1990 = 19

$$\Rightarrow \% \text{ increase} = \frac{19-6}{6} * 100 = 216.67\%$$
$$= \sim 217\%$$

SSC CGL Previous Papers (DOWNLOAD PDF)

Question 10

In which year sale of Dew-drop is maximum ?

- A 1988
- B 1992
- C 1989
- D 1993

Answer: B

Explanation:

Sales of dew drop in :

1988 - 10

1989 - 15

1990 - 25

1991 - 15

1992 - 30 [MAX]

1993 - 25

\Rightarrow Sales of dew drop is maximum is 1992

Question 11

In case of which soft drink was the average annual sale minimum during the period 1988-1993 ?

- A Pep-up only
- B Cool-sip only
- C Dew-drop only
- D Dew-drop and Cool-sip

Answer: D

Explanation:

Sales of cool sip from 1988 to 1993 = 25+6+19+15+25+30 = 120

\Rightarrow Average sales = 120/6 = 20

Sales of pep up = 30+35+30+25+20+20 = 160

\Rightarrow Average sales = 160/6 = 26.67

Sales of dew drop = 10+15+25+15+30+25 = 120

\Rightarrow Average sales = 120/6 = 20

Average sales of both cool sip and dew drop is minimum.

Instructions

The following table gives zonewise survey report of the people of a country who take coffee. Study the table and answer the questions.

Take Coffee	Zone			
	North	East	West	South
More than 3 times a day	410	310	700	1450
1 to 3 times a day	1220	830	1250	1120
Twice a week	1640	710	950	420
Only once a week	620	540	530	350
Never	950	430	620	50

Question 12

The percentage of people of south zone who take coffee at least once a day is close to

- A 33.51
- B 42.72
- C 75.81
- D 80.82

Answer: C

Explanation:

Total no. of people in South zone = $1450+1120+420+350+50 = 3390$

People who take coffee at least once a day = (1 to 3 times a day) + (more than 3 times a day)

$$= 1450+1120 = 2570$$

$$\Rightarrow \text{Required \%} = \frac{2570}{3390} * 100$$

$$= 75.81\%$$

SSC Free Preparation App

Question 13

The percentage of people from non-west zone who take coffee 'only once a week' is approximately

- A 11
- B 12
- C 13
- D 14

Answer: D

Explanation:

Total no. of people in :

$$\text{North zone} = 410+1220+1640+620+950 = 4840$$

$$\text{East zone} = 310+830+710+540+430 = 2820$$

$$\text{South zone} = 1450+1120+420+350+50 = 2570$$

$$\Rightarrow \text{Total no. of people in non-west zone} = 4840+2820+2570 = 11050$$

$$\text{No. of people who take coffee only once a week in non-west zone} = 620+540+350 = 1510$$

$$\Rightarrow \text{Required \%} = \frac{1540}{11050} * 100 = 13.67\%$$

$$= \sim 14\%$$

Question 14

The ratio of the total number of people surveyed who take coffee more than 3 times a day to the total number of people who do not take coffee at all is

- A 1 : 1.4
- B 1.4 : 1
- C 1.5 : 1
- D 1 : 1.1

Answer: B

Explanation:

No. of people who take coffee more than 3 times a day = $410+310+700+1450 = 2870$

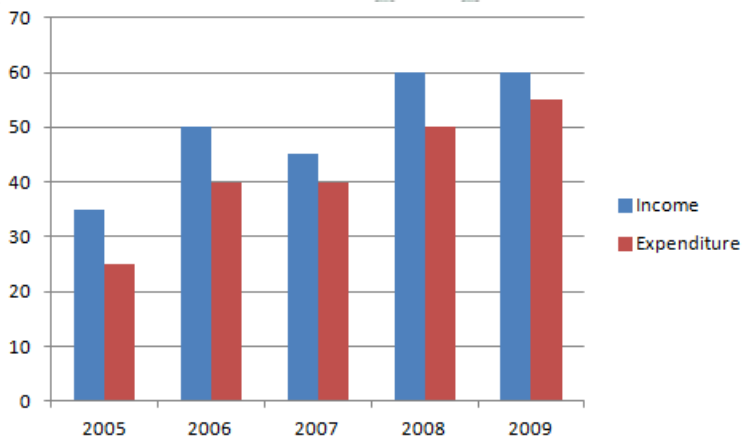
No. of people who never take coffee = $950+430+620+50 = 2050$

$$\Rightarrow \text{Required ratio} = \frac{2870}{2050} = 1.4$$

$$\Rightarrow 1.4 : 1$$

Instructions

Study the following graph which shows income and expenditure of a company over the years and answer the questions.



Question 15

The difference in profit (in Rs. crores) of the company during 2007 and 2008 is

- A 5
- B 10
- C 15
- D 20

Answer: A

Explanation:

Profit = Income - Expenditure

Income in 2007 = 45

Expenditure in 2007 = 40

$$\Rightarrow \text{Profit in 2007} = 45 - 40 = 5$$

Income in 2008 = 60

Expenditure in 2008 = 50

=> Profit in 2008 = 60-50 = 10

Required difference = 10-5 = 5

Download SSC General Knowledge PDF

Question 16

In how many years was the expenditure of the company more than the average expenditure of the given years ?

- A 4
- B 3
- C 2
- D 1

Answer: C

Explanation:

Expenditure of the company in :

2005 = 25

2006 = 40

2007 = 40

2008 = 50

2009 = 55

$$\Rightarrow \text{Average expenditure} = \frac{25+40+40+50+55}{5} = 42$$

So, only in years '2008' & '2009', the expenditure of the company is greater than the average expenditure.

Ans - (C)

Question 17

The percentage increase in income of the company from 2007 to 2008 is

- A 30
- B 25
- C $33\frac{1}{3}$
- D $42\frac{6}{7}$

Answer: C

Explanation:

Income of company in 2007 = 45

Income of company in 2008 = 60

$$\begin{aligned} \Rightarrow \% \text{ increase} &= \frac{60-45}{45} * 100 = \frac{100}{3} \\ &= 33\frac{1}{3}\% \end{aligned}$$

Question 18

Ratio of total income to total expenditure of the company over the years is

- A 21:25

- B 25:21
- C 26:21
- D 25:22

Answer: B

Explanation:

Total income of the company over the years = $35+50+45+60+60 = 250$

Total expenditure = $25+40+40+50+55 = 210$

=> Required ratio = $\frac{250}{210} = 25 : 21$

Daily Free SSC Practice Set

Instructions

For the following questions answer them individually

Question 19

The categories of qualitative variables are represented by bars where the height of each bar is

- A Class frequency
- B Class percentage
- C Class relative frequency
- D All of the above

Answer: D

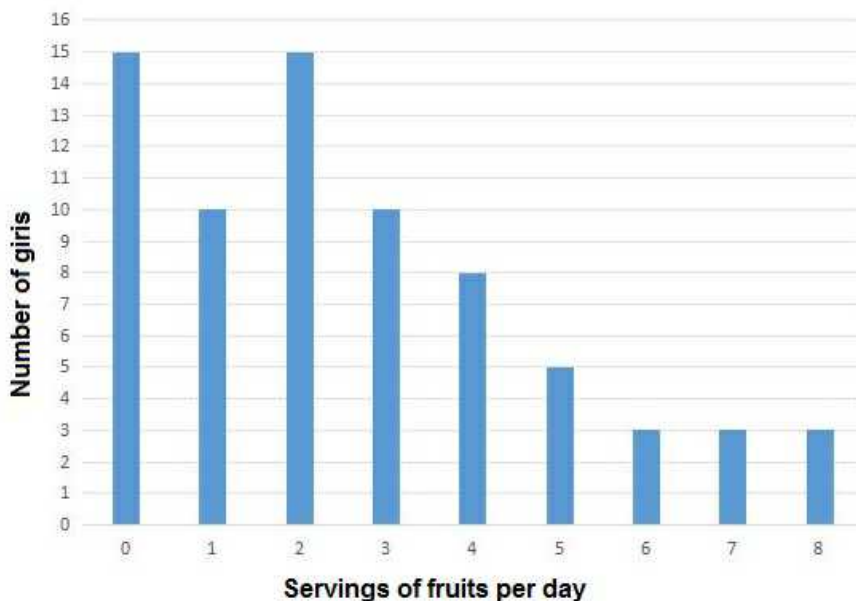
Explanation:

The categories of qualitative variables are represented by bars where the height of each bar may be class frequency, class percentage and class relative frequency.

Instructions

The distribution of fruit consumption in a sample of 72 seventeen – year – old girls is given in the graph below. Study the graph and answer the questions.

Distribution of fruit consumption



Question 20

How many of these girls ate fewer than two servings per day ?

- A 15
- B 40
- C 25
- D None of these

Answer: C

Explanation:

No. of girls who ate fewer than 2 servings a day = (No. of girls who ate 0) + (No. of girls who ate 1)
= 15 + 10 = 25

125 SSC CGL Mocks for just Rs. 199

SSC CGL Free Mock Test (Latest Pattern)

SSC CGL Previous Papers (DOWNLOAD PDF)

SSC Free Preparation App

Download SSC General Knowledge PDF

Daily Free SSC Practice Set

General Science Notes for SSC CGL

SSC CHSL Previous Papers (DOWNLOAD PDF)

SSC CHSL Free Mock Test (Latest Pattern)

Free SSC Study Material (18,000 Solved Questions)

1500 + Free Must Solved SSC Questions (With Solutions)

SSC Exam Update Videos & Free Study Material (YouTube Channel)

Free Gk Tests

SSC CGL Tier-2 Previous Papers PDF

